

<b>Flight Procedure Tracking Form</b>		<b>Action:</b> AMENDMENT	<b>Task Type:</b> IAP	<b>Date Open:</b> 05/22/2017	<b>Task #:</b> 201705112807930D001	<b>Request #:</b> 20170511280793
<b>Procedure:</b> RNAV (GPS) RWY 35 AMDT 1			<b>Airport ID:</b> KBGD	<b>Airport:</b> HUTCHINSON COUNTY		<b>Reimbursable #:</b> NO
<b>City:</b> BORGER	<b>ST:</b> TX	<b>GPS #:</b>	<b>Estimated Chart Date:</b> 09/13/2018		<b>FICO #:</b>	
<b>Fac ID:</b> N/A		<b>Fac. Type:</b>		<b>Specialist:</b> DARREN HOOPER		
<b>Procedure Review</b>						
	<b>Rec'd</b>	<b>Rel'd</b>	<b>Full Name</b>	<b>Comments</b>		
<b>Lead:</b>	03/14/2018	05/01/2018	ROBERT HAMILTON	<div>QUALITY</div> <div>10</div> <div>CHECKED</div>		
<b>QA:</b>	05/01/2018					
<b>Liaison:</b>						
<b>Procedure Comments:</b> ENROUTE-NON <b>Remark Type:</b> INFORMATION  APPROACH RNAV (GPS) RWY 35 AMDT 1. PROCEDURE AMENDED TO ADD WAAS CAPABILITY, LPV AND LNAV/VNAV MINIMUMS.  FLT CHK: REQUEST VGSI COMMISSION.  ACTIVE DATA USED FOR KBGD AIRPORT AND RUNWAYS.  TEAM LEAD: DEZ SILAGYI AJV-5421 (405) 954-5340 MANAGER: JULIE MORGAN AJV-5420 (405) 954-8568 <div style="text-align: right;"><b>ARI SAVED</b> <b>5/7/18</b></div>						

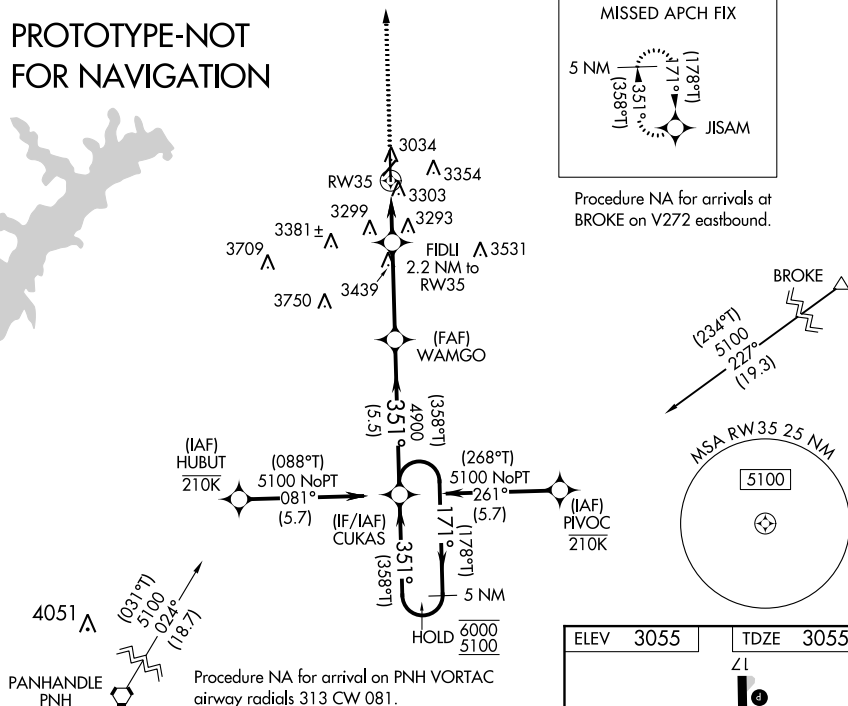
# RNAV (GPS) RWY 35

## HUTCHINSON COUNTY (BGD)

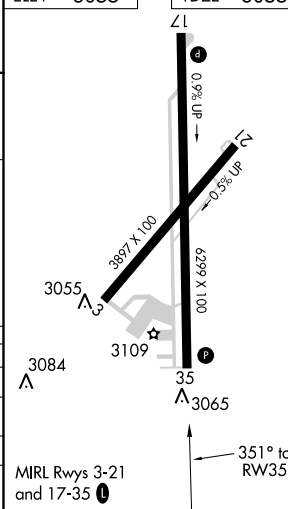
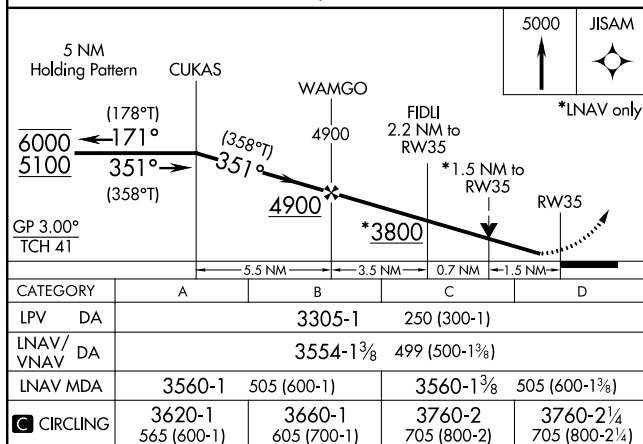
MISSED APPROACH: Climb to 5000  
direct JISAM and hold.

UNICOM  
123.0 (CTAF) **L**

Procedure NA for arrivals at  
BROKE on V272 eastbound.



ELEV	3055		TDZE	3055
------	------	--	------	------



# OLD TO BE REPLACED

BORGER, TEXAS

AL-5152 (FAA)

15176

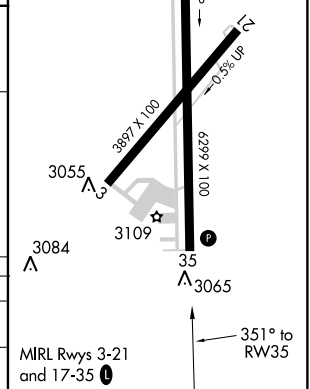
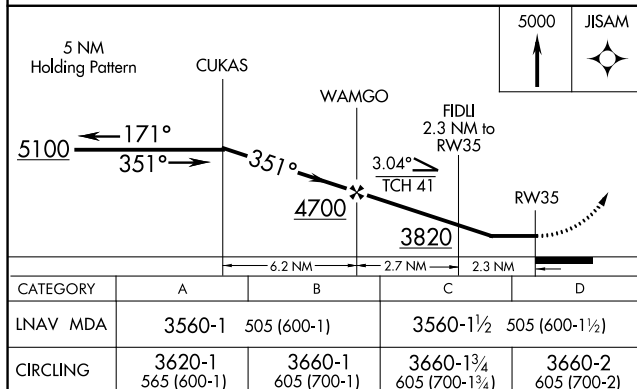
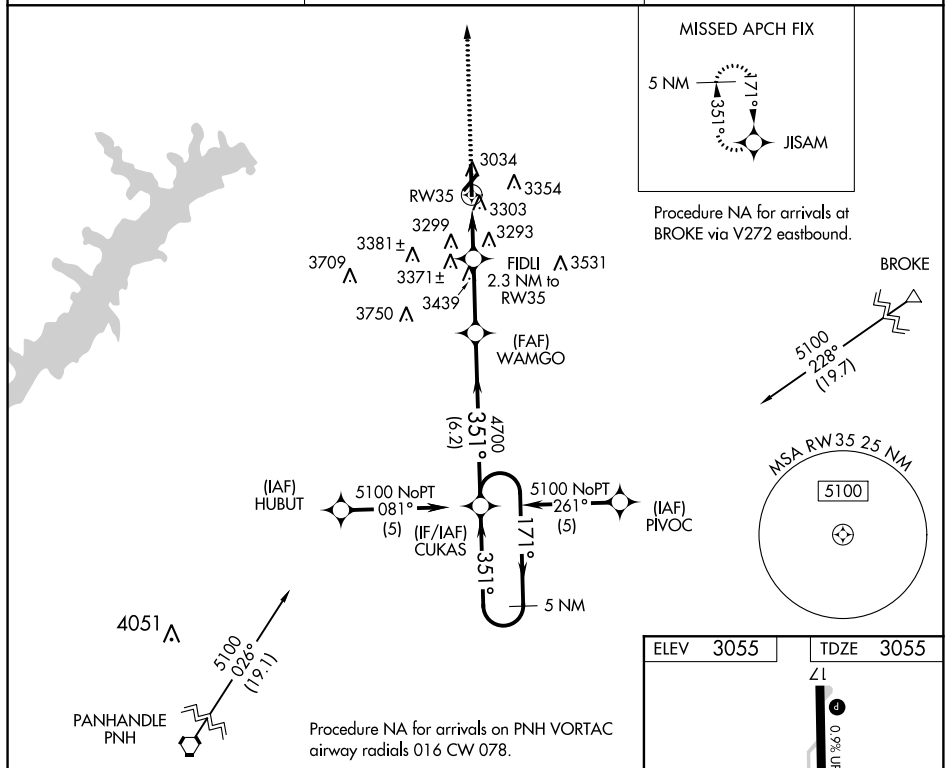
APP CRS	Rwy Idg	<b>6299</b>
<b>351°</b>	TDZE	<b>3055</b>
	Apt Elev	<b>3055</b>

## RNAV (GPS) RWY 35

HUTCHINSON COUNTY (BGD)

<p>▼ When local altimeter setting not received, use Pampa altimeter setting; increase all MDA 80 feet, LNAV Cat D and circling Cat C, D visibility ¼ mile. Visibility reduction by helicopters NA. DME/DME RNP-0.3 NA.</p> <p>▲ MISSED APPROACH: Climb to 5000 direct JISAM and hold.</p>
---

ASOS <b>118.325</b>	AMARILLO APP CON * <b>119.5 307.0</b>	UNICOM <b>123.0 (CTAF) 0</b>
------------------------	--	---------------------------------



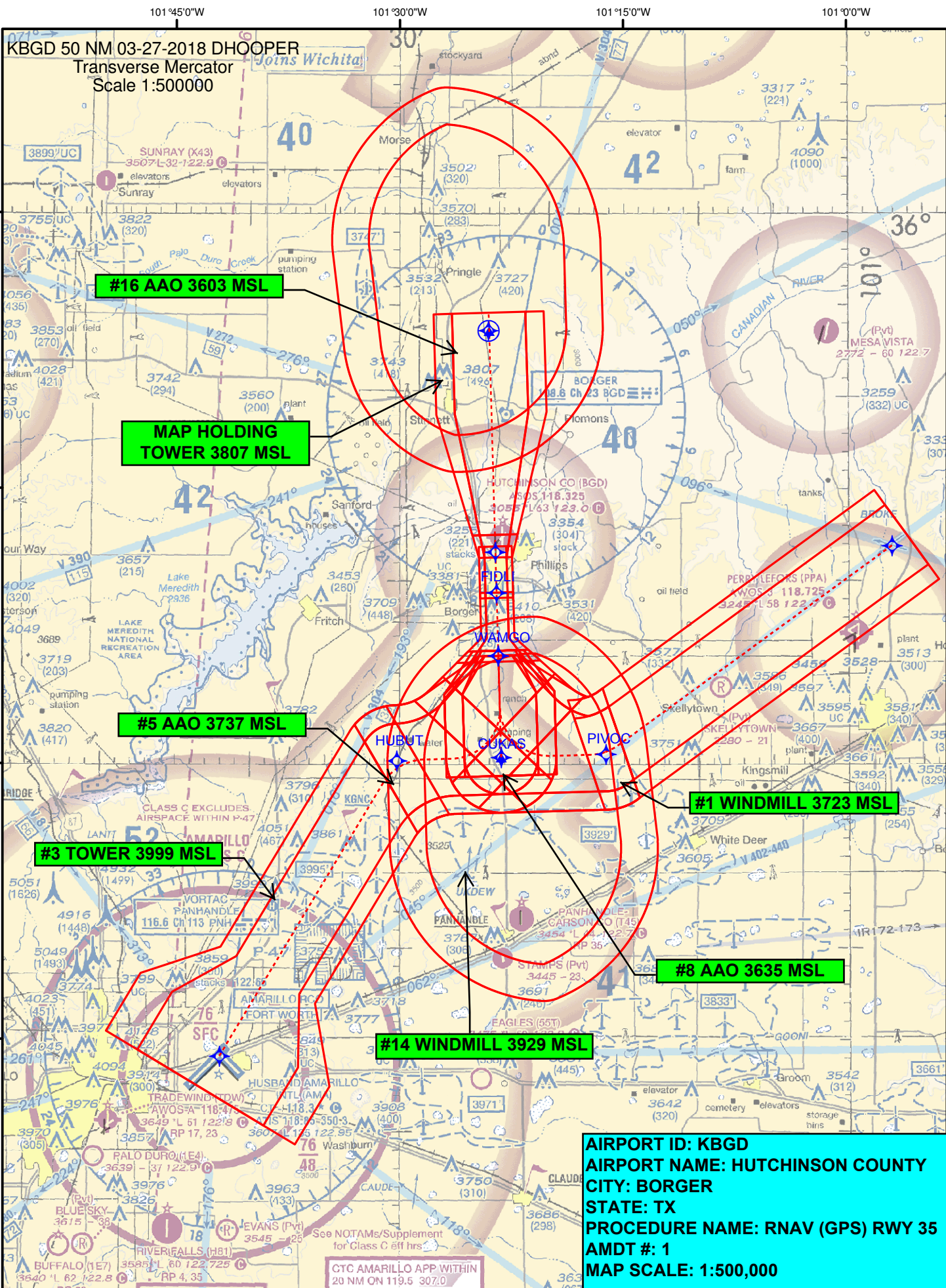
BORGER, TEXAS  
Orig 05JUN08

35°42' N-101° 24' W

## HUTCHINSON COUNTY (BGD) RNAV (GPS) RWY 35

SC-2, 01 MAR 2018 to 29 MAR 2018

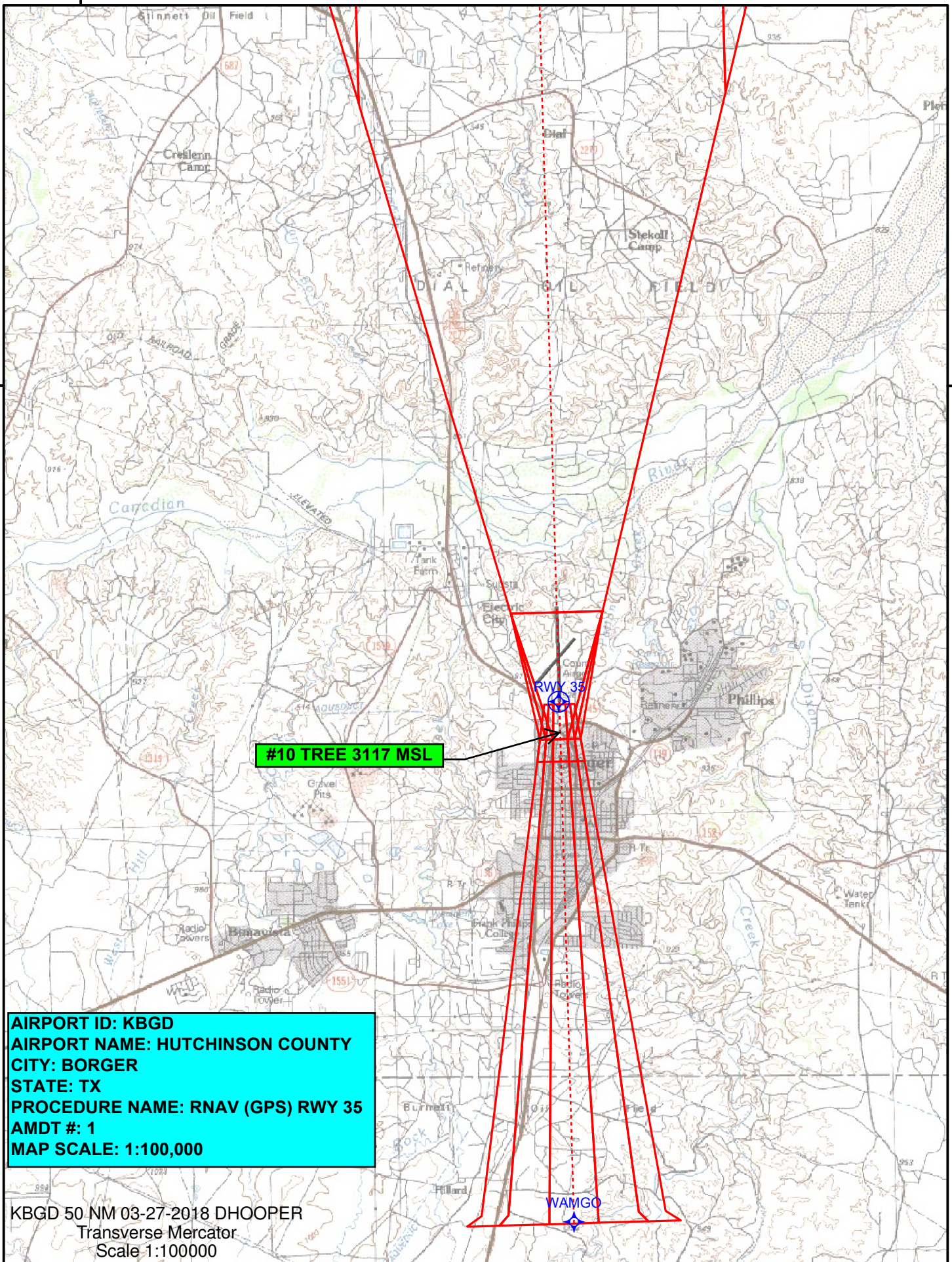
SC-2, 01 MAR 2018 to 29 MAR 2018





101°30'0"W

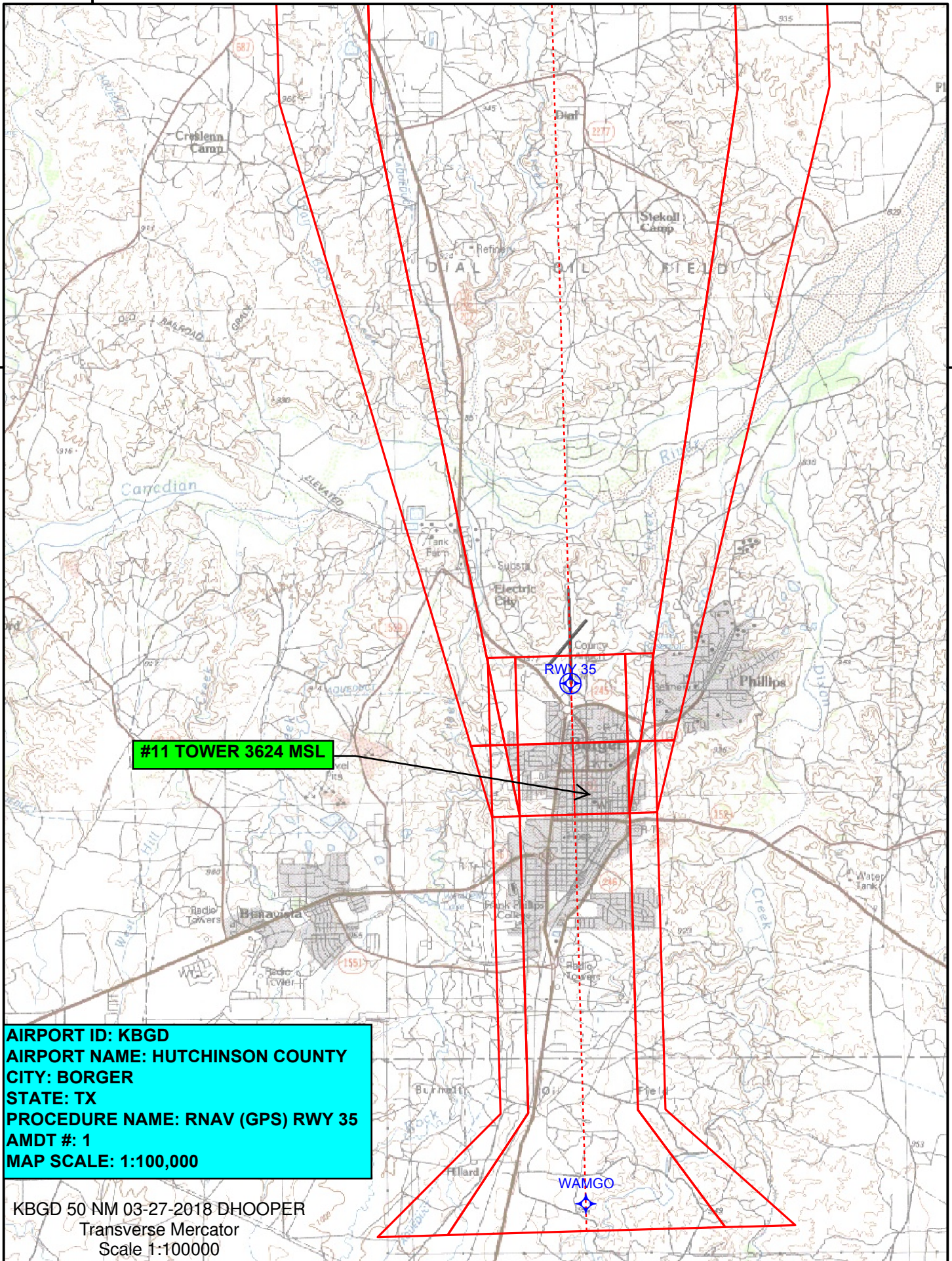
35°45'0"N





101°30'0"W

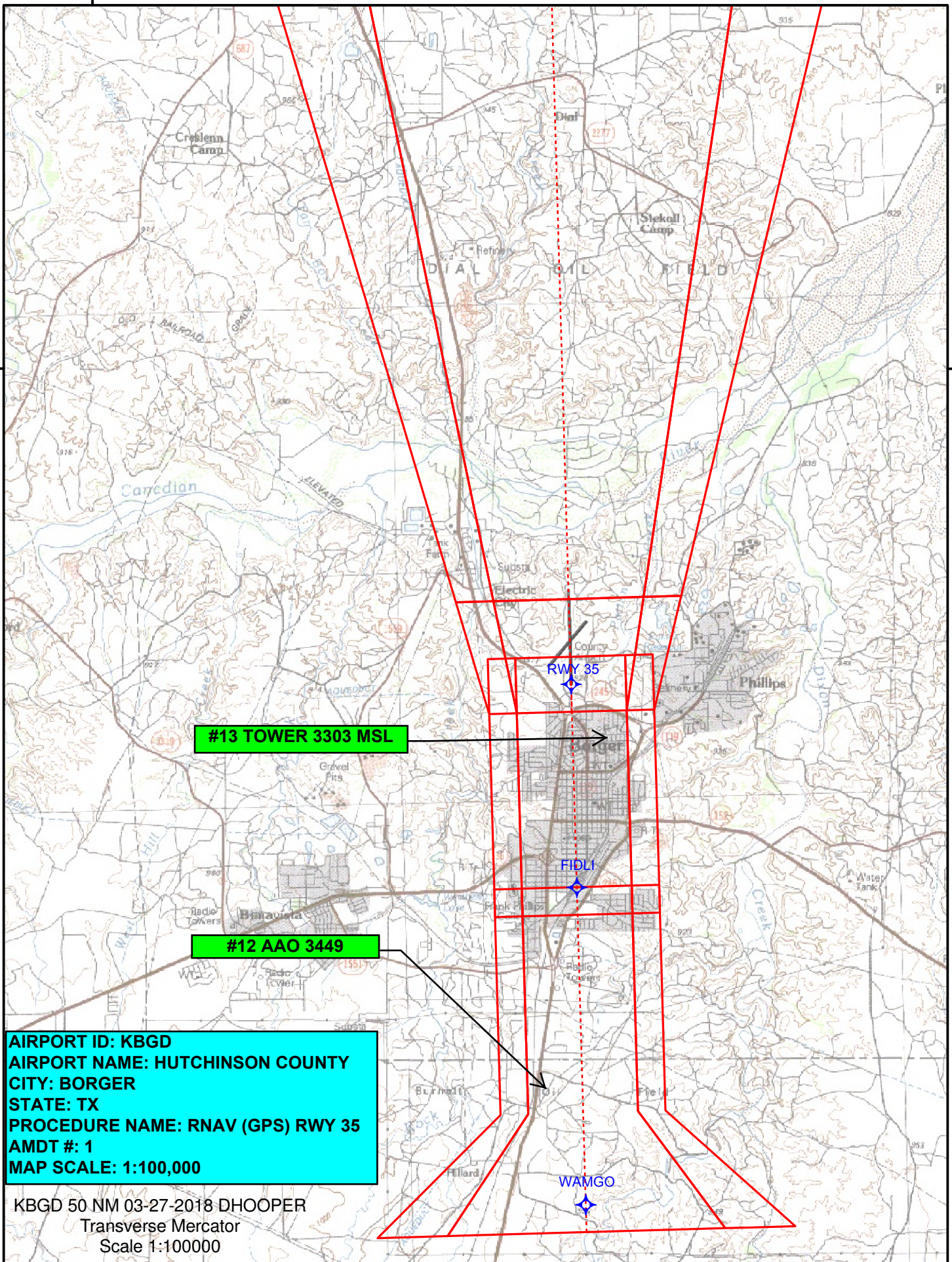
35°45'0"N





101°30'0"W

35°45'0"N





101°30'0"W

AIRPORT ID: KBGD  
AIRPORT NAME: HUTCHINSON COUNTY  
CITY: BORGER  
STATE: TX  
PROCEDURE NAME: RNAV (GPS) RWY 35  
AMDT #: 1  
MAP SCALE: 1:100,000

35°45'0"N

