

Flight Procedure Tracking Form		Action: AMENDMENT	Task Type: IAP	Date Open: 05/22/2017	Task #: 201705112807930C001	Request #: 20170511280793
Procedure: RNAV (GPS) Y RWY 13R AMDT 3			Airport ID: KDFW	Airport: DALLAS-FORT WORTH INTL		Reimbursable #: NO
City: DALLAS-FORT WORTH	ST: TX	GPS #:	Estimated Chart Date: 09/13/2018		FICO #:	
Fac ID: N/A		Fac. Type:			Specialist: WARDELL HENNING	
Procedure Review						
	Rec'd	Rel'd	Full Name	Comments		
Lead:	11/30/2017	05/07/2018	ADOLFO URRUTIA	<div style="color: green; font-weight: bold; transform: rotate(30deg);">QUALITY</div> <div style="color: green; font-weight: bold; transform: rotate(-30deg);">10</div> <div style="color: green; font-weight: bold; transform: rotate(-30deg);">CHECKED</div>		
QA:	05/07/2018					
Liaison:						
Procedure Comments:			ENROUTE-NON	Remark Type: INFORMATION		
CONTACT ADOLFO URRUTIA - (405) 954-2079 OR PAT MULQUEEN - (405) 954-4073.						ARI SAVED 5/15/18

DALLAS-FORT WORTH, TEXAS



AL-6039 (FAA)

FIG

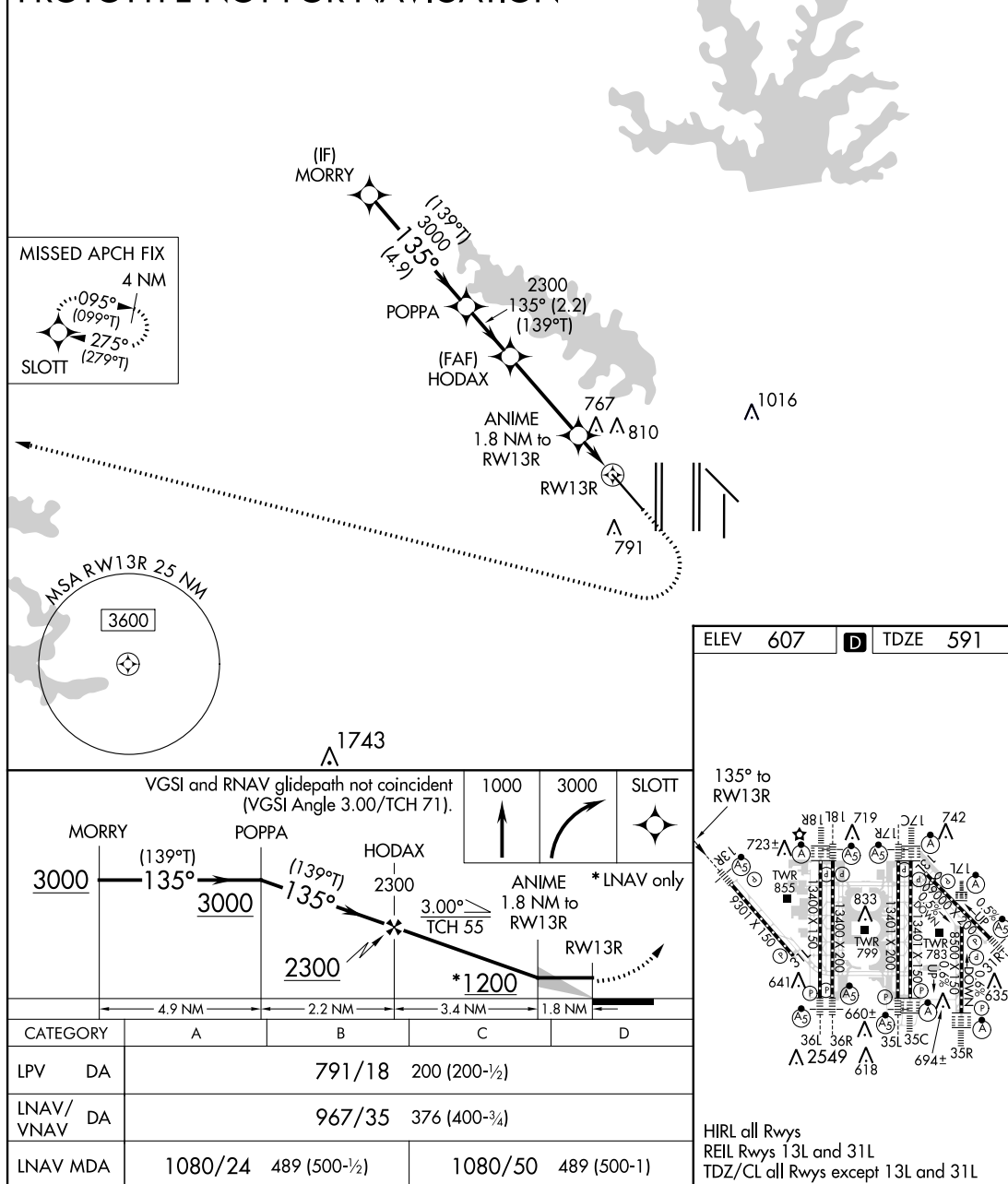
WAAS CH 72742 W13A	APP CRS 135°	Rwy Idg TDZE Apt Elev	9301 591 607
--	------------------------	-----------------------------	---

RNAV (GPS) Y RWY 13R

DALLAS-FORT WORTH INTL (DFW)

RNP APCH			<div>MALSR</div> <div></div>	MISSED APPROACH: Climb to 1000 then climbing right turn to 3000 direct SLOTT and hold.		
<div><div></div><div>For uncompensated Baro-VNAV systems, LNAV/VNAV NA below -6° C or above 54° C. For inop ALS, increase LNAV/VNAV all Cats visibility to RVR 5500 and LNAV Cat C/D visibility to 1 3/4 SM.</div></div>						
<div>D-ATIS</div> <div>ARR 123.775</div> <div>DEP 135.925</div>	<div>REGIONAL APP CON</div> <div>118.1 133.15</div>	<div>DFW TOWER</div> <div>126.55 127.5 EAST</div> <div>124.15 134.9 WEST</div>	<div>GND CON</div> <div>121.65 121.8 EAST</div> <div>121.85 WEST</div>	<div>CLNC DEL</div> <div>128.25</div>	<div>CPDLC</div>	

PROTOTYPE-NOT FOR NAVIGATION



AUTOMATED AL-6039 RNAV (GPS) Y RWY 13R

SC-2
05-21-2018
COMPILER: HD
REVIEWER:
DBL CHKR:
EFF: FIG

DALLAS-FORT WORTH, TEXAS

DALLAS-FORT WORTH INTL (DFW)

Amdt 3 FIG

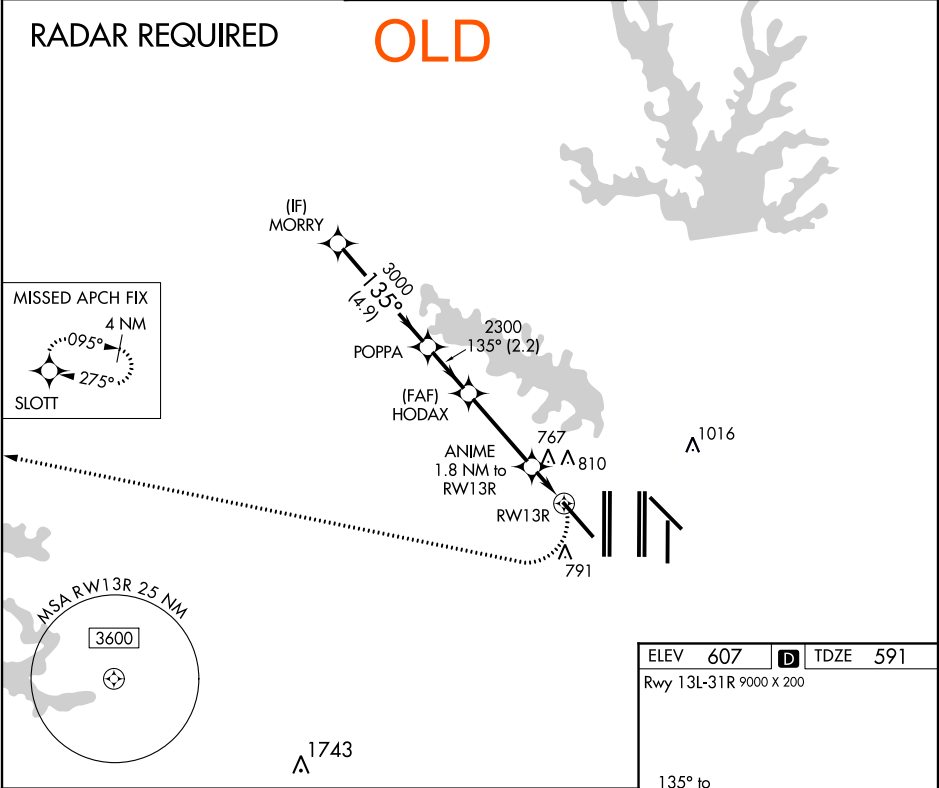
32°54'N-97°02'W

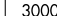

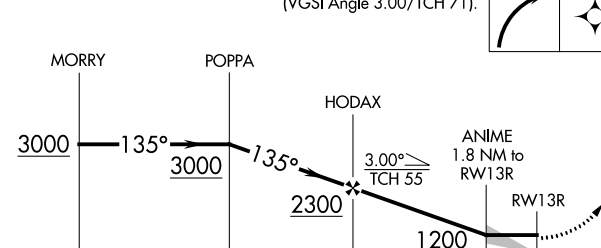
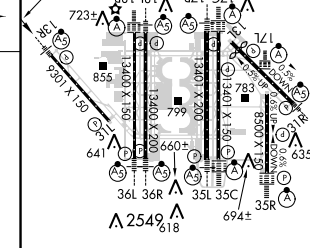
RNAV (GPS) Y RWY 13R

APP CRS 135°	Rwy Idg TDZE Apt Elev	9301 591 607	RNAV (GPS) Y RWY 13R	
			DALLAS/FORT WORTH INTL (DFW)	

DME/DME RNP-0.3 NA.		MALSR	MISSED APPROACH: Climbing right turn to 3000 direct SLOTT and hold.	
---------------------	--	-------	---	--

ATIS ARR 123.775 DEP 135.925	REGIONAL APP CON 118.1 133.15	DFW TOWER 125.025 126.55 127.5 124.15 134.9	EAST WEST	GND CON 121.65 121.8 121.85 WEST	CLNC DEL 128.25
--	---	---	--------------	--	---------------------------



VGSI and descent angles not coincident (VGSI Angle 3.00°/TCH 71°).						
						
CATEGORY	A		B	C	D	
LNNAV MDA	1080/24 489 (500-½)		1080/50 489 (500-1)		HIRL all Rwy's REIL Rwy's 13L and 31L TDZ/CL all Rwy's except 13L and 31L	

