

Flight Procedure Tracking Form		Action: FLIGHT CHECK	Task Type: IAP	Date Open: 10/24/2017	Task #: 201705112807930B008	Request #: 20170511280793
Procedure: APPROACH VOR RWY 18 AMDT 8C			Airport ID: KALO	Airport: WATERLOO RGNL		Reimbursable #: NO
City: WATERLOO	ST: IA	GPS #:	Estimated Chart Date: 09/13/2018		FICO #:	
Fac ID: N/A		Fac. Type:			Specialist: HEIDI SNIDER	
Procedure Review						
	Rec'd	Rel'd	Full Name	Comments		
Lead:	02/27/2018					
QA:				CWS 7/2/18		
Liaison:						
Procedure Comments: ENROUTE-NON Remark Type: INFORMATION PENDING AIRPORT DATA AND FACILITY DATA USED KALO MAGVAR FROM 3E - TO 0E ALO;D MAGVAR FROM 6E - TO 0E CONTACT; AJV-5420 ROBERT HAMILTON 405-954-4608						

FIG

VOR RWY 18
WATERLOO RGNL (ALO)

MISSED APPROACH: Climbing right turn to 2800 on ALO VOR/DME R-215 to NEVIS INT and hold.

PROTOTYPE: NOT
FOR NAVIGATION

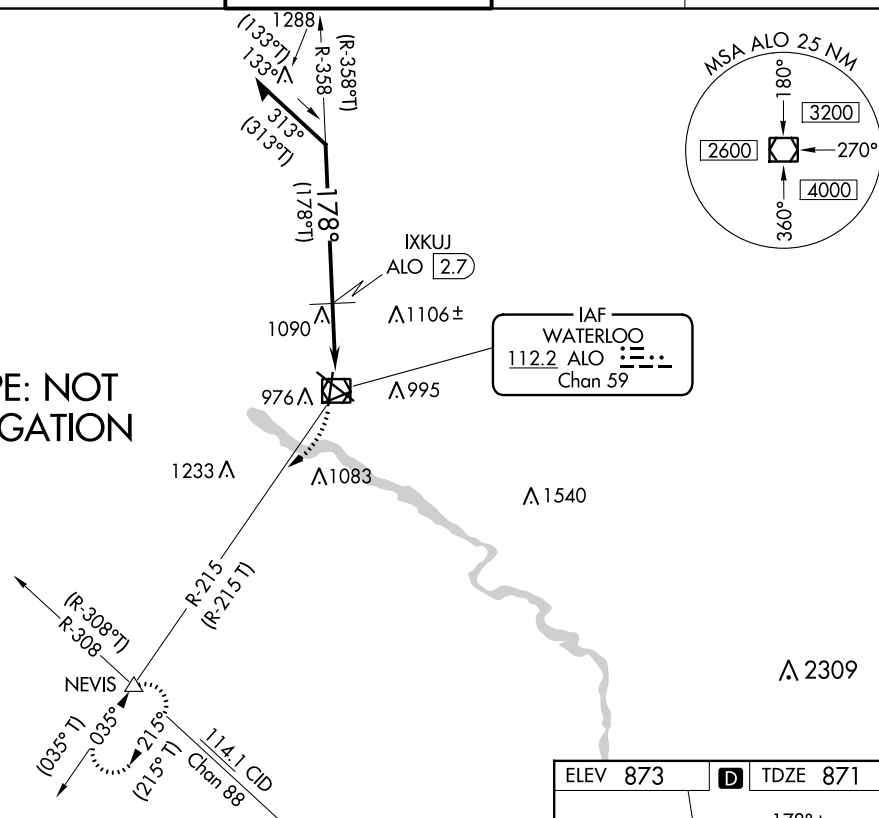


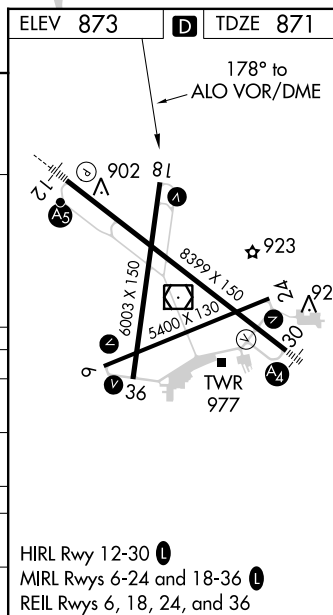


Figure 1 illustrates a flight path for a twin-engine aircraft. The path starts at a 2600 ft altitude, descends to 1600 ft, and then levels off. Key points include a 359° heading (358° true) at 2600 ft, a 178° heading (178° true) at 1600 ft, and a 3.00° climb gradient. The aircraft is shown at 1600 ft, 0.8 NM from the start of the climb, with a 1.9° climb gradient. The path ends at a 0.7 NM distance from the start of the climb.

CATEGORY	A	B	C	D
S-18	1600-1 729 (800-1)	1600-2 729 (800-2)		
 CIRCLING	1600-1 727 (800-1)	1600-2 727 (800-2)	1600-2 727 (800-2)	1600-2 727 (800-2)
IXKUJ DME MINIMUMS				
S-18	1340-1 469 (500-1)	1340-1 469 (500-1)	1340-1 469 (500-1)	1340-1 469 (500-1)
 CIRCLING	1360-1 487 (500-1)	1400-1 527 (600-1)	1480-1 607 (700-1)	1600-2 727 (800-2)



AUTOMATED AL-945 VOR RWY 18

NC-3
3 JUL 2018
COMPILER: CG
REVIEWER:
DBL CHKR:
EFF: FIG

WATERLOO RGNL (ALO)
VOR RWY 18

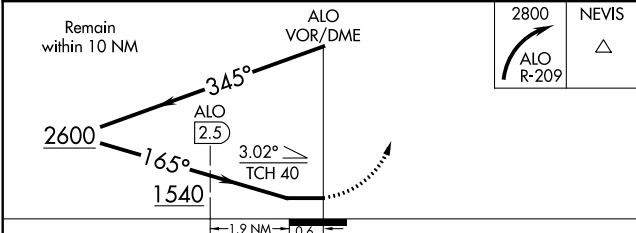
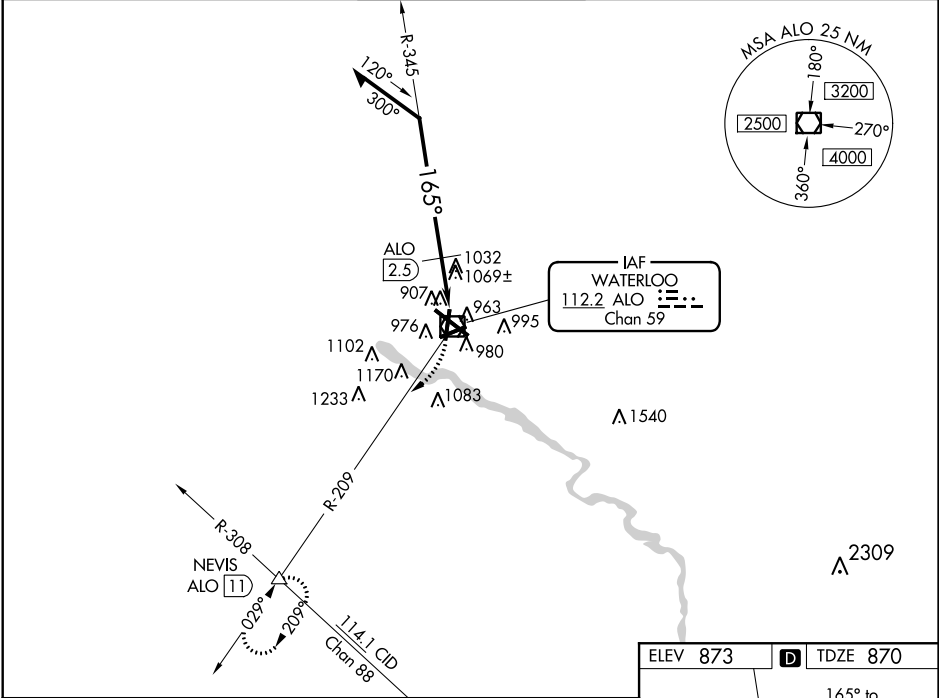
VOR/DME ALO	APP CRS	Rwy Idg	6003
112.2	165°	TDZE	870
Chan 59		Apt Elev	873

VOR RWY 18
WATERLOO RGNL (ALO)

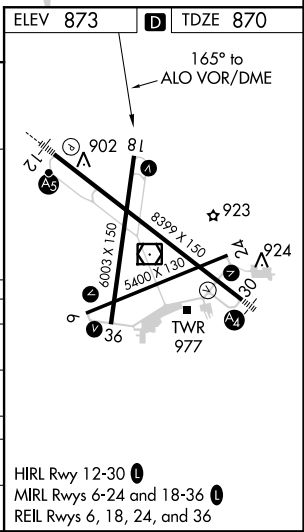
NA

MISSED APPROACH: Climbing right turn to 2800 via ALO VOR/DME R-209 to NEVIS INT and hold.

ATIS 120.65	WATERLOO APP CON ★ 118.9 251.15	WATERLOO TOWER ★ 125.075 (CTAF) 257.8	GND CON 121.9 269.1	UNICOM 122.95
----------------	------------------------------------	--	------------------------	------------------

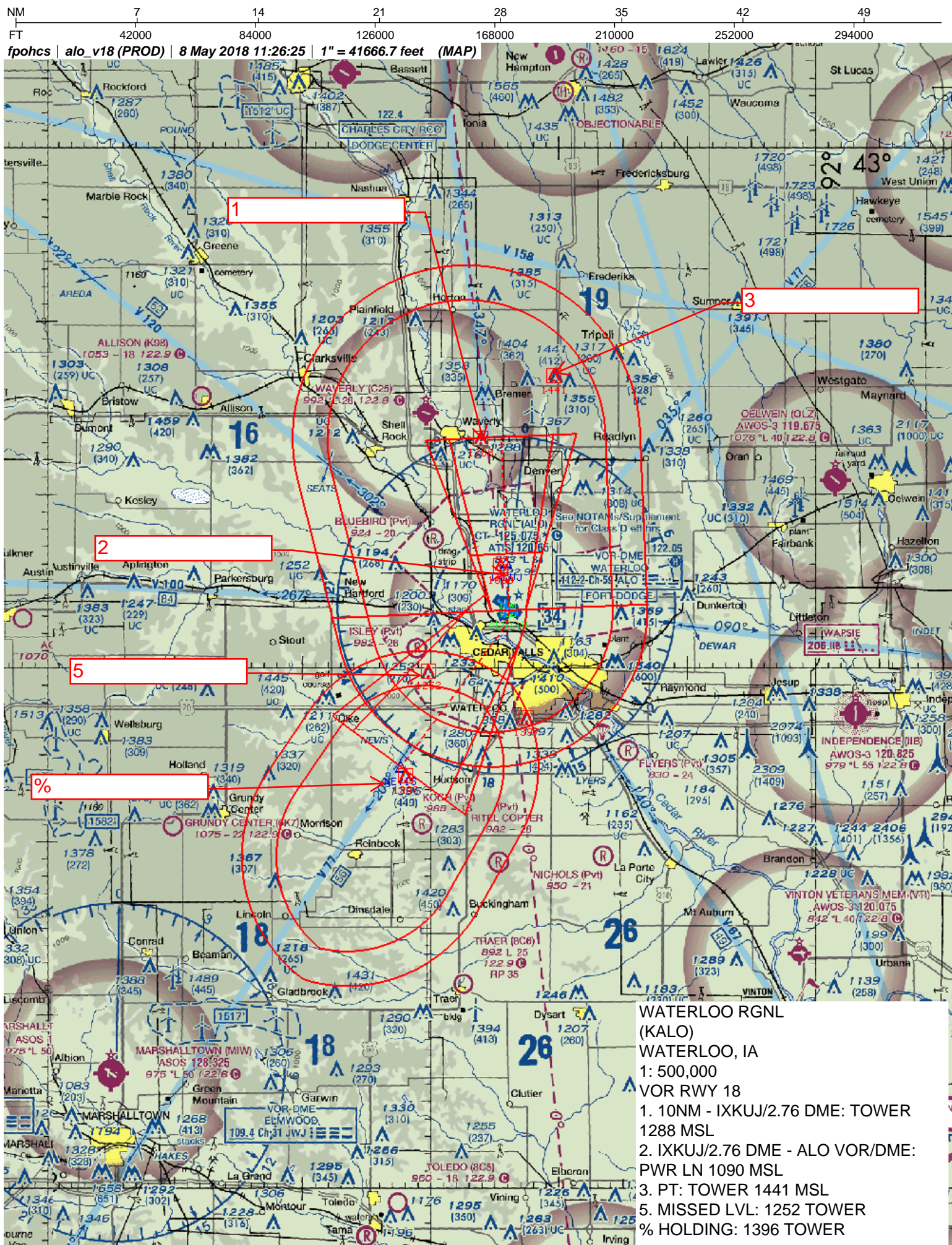


CATEGORY	A	B	C	D
S-18	1540-1	670 (700-1)	1540-1¼ 670 (700-1¼)	1540-2 670 (700-2)
CIRCLING	1540-1	667 (700-1)	1540-1¾ 667 (700-1¾)	1540-2 667 (700-2)
DME MINIMUMS				
S-18	1320-1	450 (500-1)	1320-1¼ 450 (500-1¼)	1320-1½ 450 (500-1½)
CIRCLING	1380-1	507 (600-1)	1380-1½ 507 (600-1½)	1480-2 607 (700-2)



NC-3, 21 JUL 2016 to 18 AUG 2016

NC-3, 21 JUL 2016 to 18 AUG 2016



NM 1 2 3 4 5 6 7 8 9 10
FT 8000 16000 24000 32000 40000 48000 56000 64000

fpohcs alo v18 (PROD) 8 May 2018 12:13:09 1" = 8333.3 feet (MAP)

WATERLOO RGNL

(KALO)

WATERLOO, IA

1: 100,000

VOR RWY 18

FINAL STEPDOWN:

2. PWR LN 1090 MSL

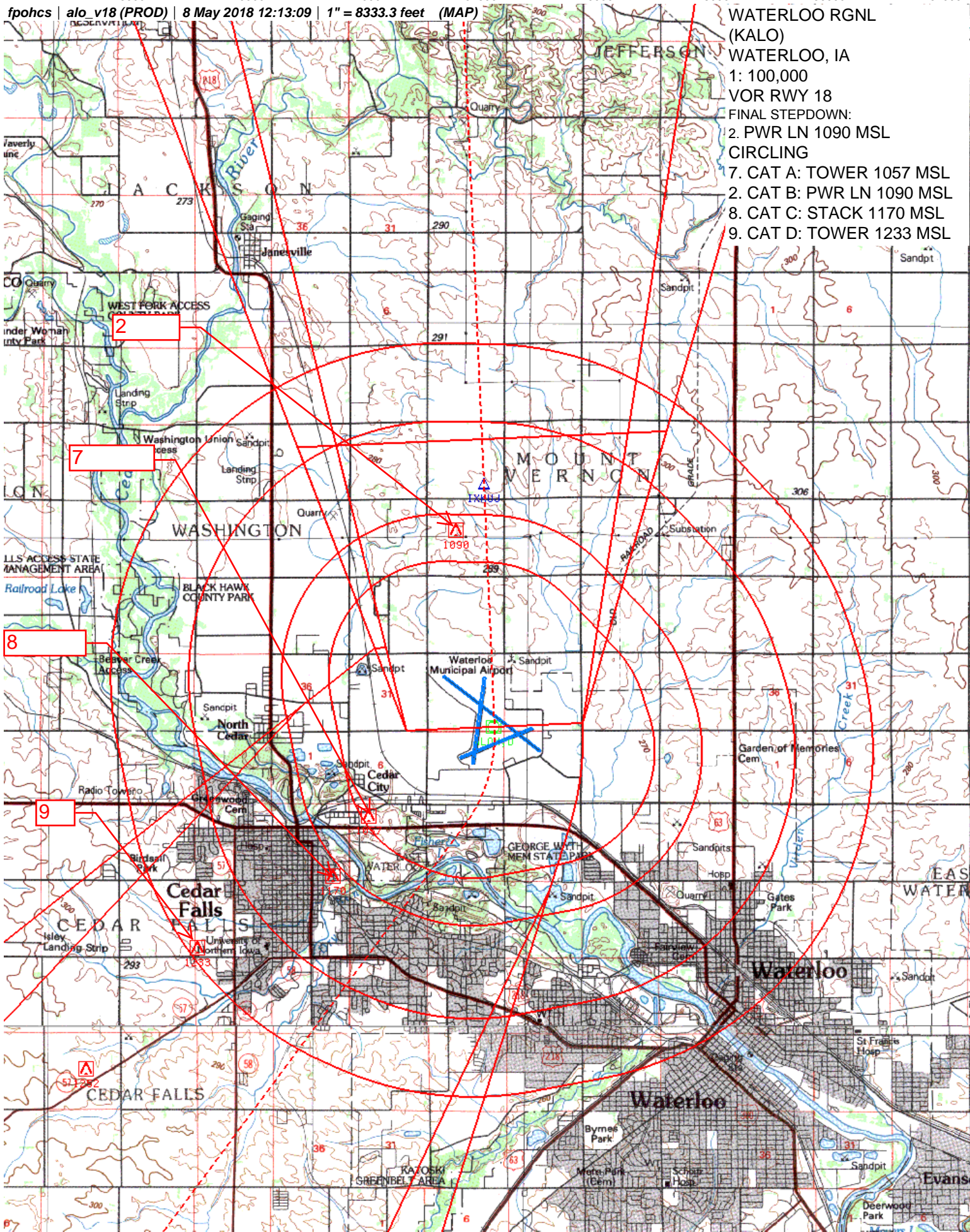
CIRCLING

7. CAT A: TOWER 1057 MSL

2. CAT B: PWR LN 1090 MSL

8. CAT C: STACK 1170 MSL

9. CAT D: TOWER 1233 MSL



Processed Tuesday, March 27, 2018