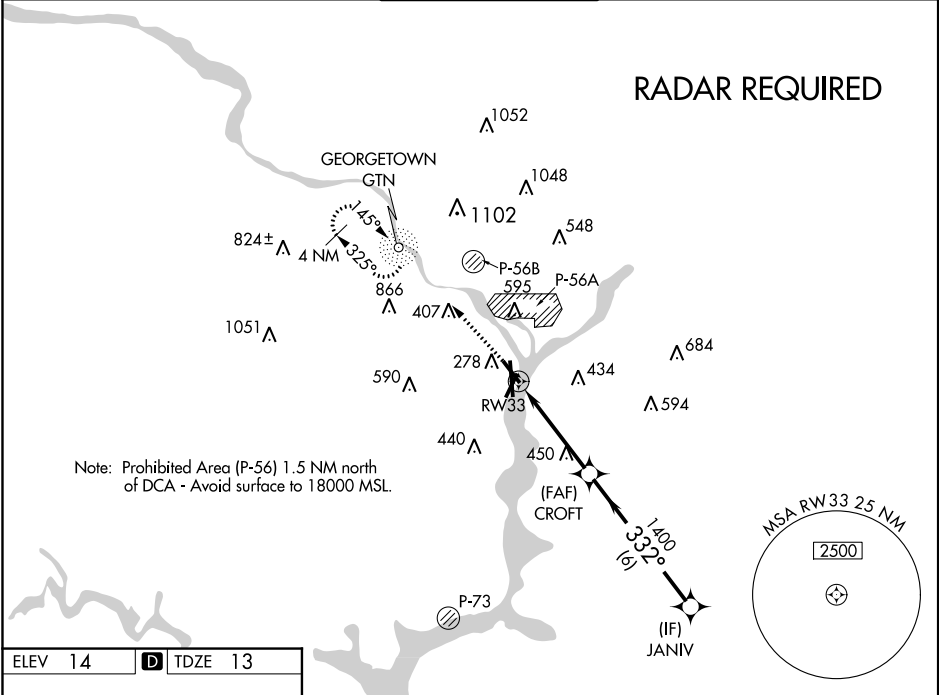


<b>Flight Procedure Tracking Form</b>		<b>Action:</b> AMENDMENT	<b>Task Type:</b> IAP	<b>Date Open:</b> 07/30/2017	<b>Task #:</b> 201705093318780S005	<b>Request #:</b> 20170509331878
<b>Procedure:</b> RNAV (GPS) RWY 33 AMDT 1A				<b>Airport ID:</b> KDCA	<b>Airport:</b> RONALD REAGAN WASHINGTON NATIONAL	<b>Reimbursable #:</b> NO
<b>City:</b> WASHINGTON	<b>ST:</b> DC	<b>GPS #:</b>	<b>Estimated Chart Date:</b> 03/29/2018		<b>FICO #:</b>	
<b>Fac ID:</b> N/A		<b>Fac. Type:</b>			<b>Specialist:</b> DEANNA FIELDS	
<b>Procedure Review</b>						
	<b>Rec'd</b>	<b>Rel'd</b>	<b>Full Name</b>	<b>Comments</b>		
<b>Lead:</b>	07/30/2017					
<b>QA:</b>			J ZEDER 11/16/2017			
<b>Liaison:</b>						
<b>Procedure Comments:</b> ENROUTE-NON <b>Remark Type:</b> INFORMATION  CONTACT: JACOB POWERS, SUB-TEAM MANAGER, IFP TEAM 3, 405.954.8702 (OR) PATRICK MULQUEEN, MANAGER, AJV-543, INSTRUMENT FLIGHT PROCEDURES TEAM 3, 405.954.4073.  PROCESSED IAW FLIGHT TEAM (AJW-333) MEMO, MAY 30, 2017 SUBJECT: FLIGHT INSPECTION REVIEW NOT REQUIRED.  ASSIGNED MAG VAR, KDCA: OLD 9W-NEW 11W.						

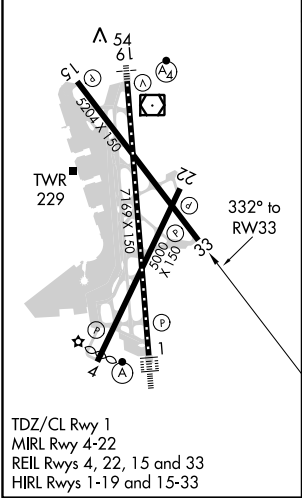
WAAS CH <b>90123</b> <b>W33A</b>	APP CRS <b>332°</b>	Rwy Idg <b>5204</b> TDZE <b>13</b> Apt Elev <b>14</b>
--	------------------------	---

RNAV (GPS) RWY 33  
RONALD REAGAN WASHINGTON NATIONAL (DCA)

<div><div>▼</div><div>▲</div></div> <div>For uncompensated Baro-VNAV systems, LNAV/VNAV NA below -9°C (16°F) or above 54°C (130°F). Circling NA northeast of Rwy 15-33. DME/DME RNP-0.3 NA.</div>		MISSED APPROACH: Climb to 2200 direct GTN NDB and hold, continue climb-in-hold to 2200.			
D-ATIS 132.65	POTOMAC APP CON 119.85 319.1 (WEST/SOUTH) 124.2 269.0 (EAST)	WASHINGTON TOWER 119.1 257.6	GND CON 121.7 257.6	CLNC DEL 128.25	CPDLC



ELEV 14	<b>D</b>	TDZE 13
---------	----------	---------



2200	GTN	VGS and RNAV glidepath not coincident (VGS Angle 3.00/TCH 37).			
* LNAV only		* 2.1 NM to RW33	CROFT	JANIV	
RW33		1400	332°	2100	GP 3.00° TCH 55
2.1 NM		2.1 NM	6 NM		
CATEGORY	A	B	C	D	
LPV DA	263-¾		250 (300-¾)		
LNAV/VNAV DA	609-2		596 (600-2)		
LNAV MDA	720-1	707 (800-1)	720-2	707 (800-2)	
CIRCLING	720-1	706 (800-1)	840-2½ 826 (900-2½)	900-3 886 (900-3)	