


Flight Procedure Tracking Form		Action: FLIGHT CHECK	Task Type: IAP	Date Open: 12/12/2017	Task #: 201705093318780J031	Request #: 20170509331878
Procedure: VOR RWY 32 AMDT 3E				Airport ID: KRDU	Airport: RALEIGH-DURHAM INTL	Reimbursable #: NO
City: RALEIGH/DURHAM	ST: NC	GPS #:	Estimated Chart Date: 05/24/2018		FICO #:	
Fac ID: RDU		Fac. Type: VORTAC			Specialist: BRYAN BLUE	
Procedure Review						
	Rec'd	Rel'd	Full Name		Comments	
Lead:	07/29/2017	02/07/2018	ALLAN WILL			
QA:	02/07/2018		J ZEDER 03/16/2018 ¹⁶			
Liaison:						
Procedure Comments:			Remark Type: INFORMATION			
RDU VORTAC MAGVAR: OLD-W4/1965 NEW-W9/2020 CONTACT: VIC NASO 405-954-4056						

VORTAC RDU	APP CRS	Rwy Idg	3570
117.2	312°	TDZE	429
Chan 119		Apt Elev	435

OLD

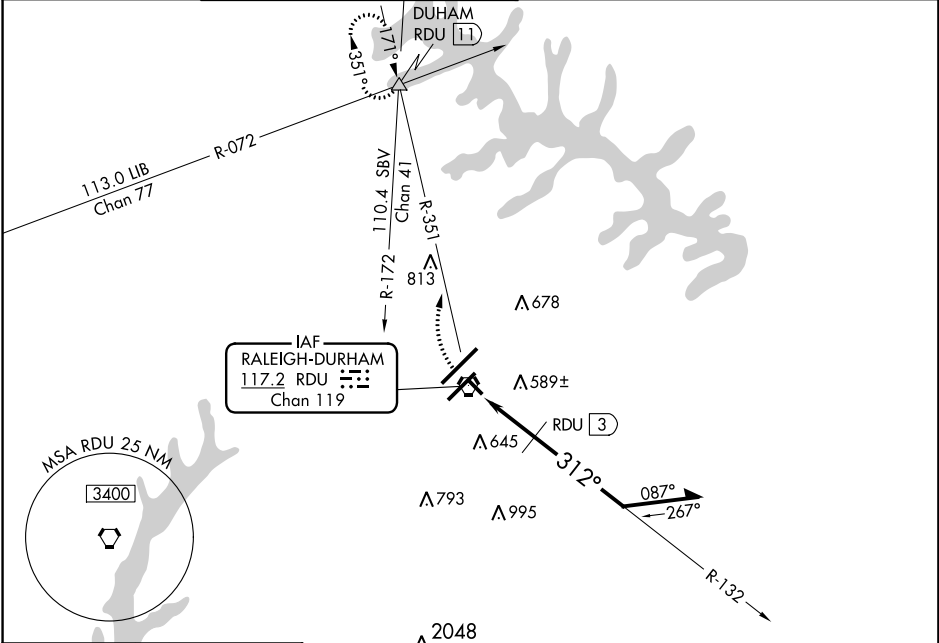
VOR RWY 32
RALEIGH-DURHAM INTL (RDU)



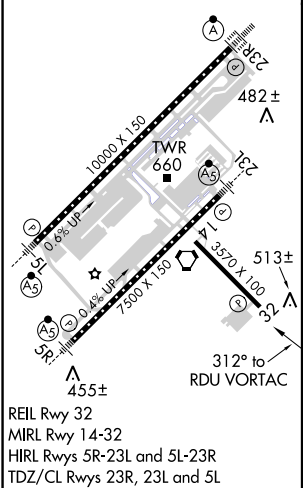
Helicopter visibility reduction below 3/4 SM NA.

MISSED APPROACH: Climbing right turn to 2200 on RDU R-351 to DUHAM INT and hold.

D-ATIS	RALEIGH APP CON	(EAST) RALEIGH TOWER	(WEST)	(EAST) GND CON	(WEST)	CLNC DEL	CPDLC
123.8	128.3 307.9	127.45 257.8 Rwys 5R-23L and 14-32	119.3 257.8 Rwy 5L-23R	121.9 348.6 Rwys 5R-23L and 14-32	121.7 348.6 Rwy 5L-23R	120.1	



ELEV 435	D	TDZE 429
----------	---	----------

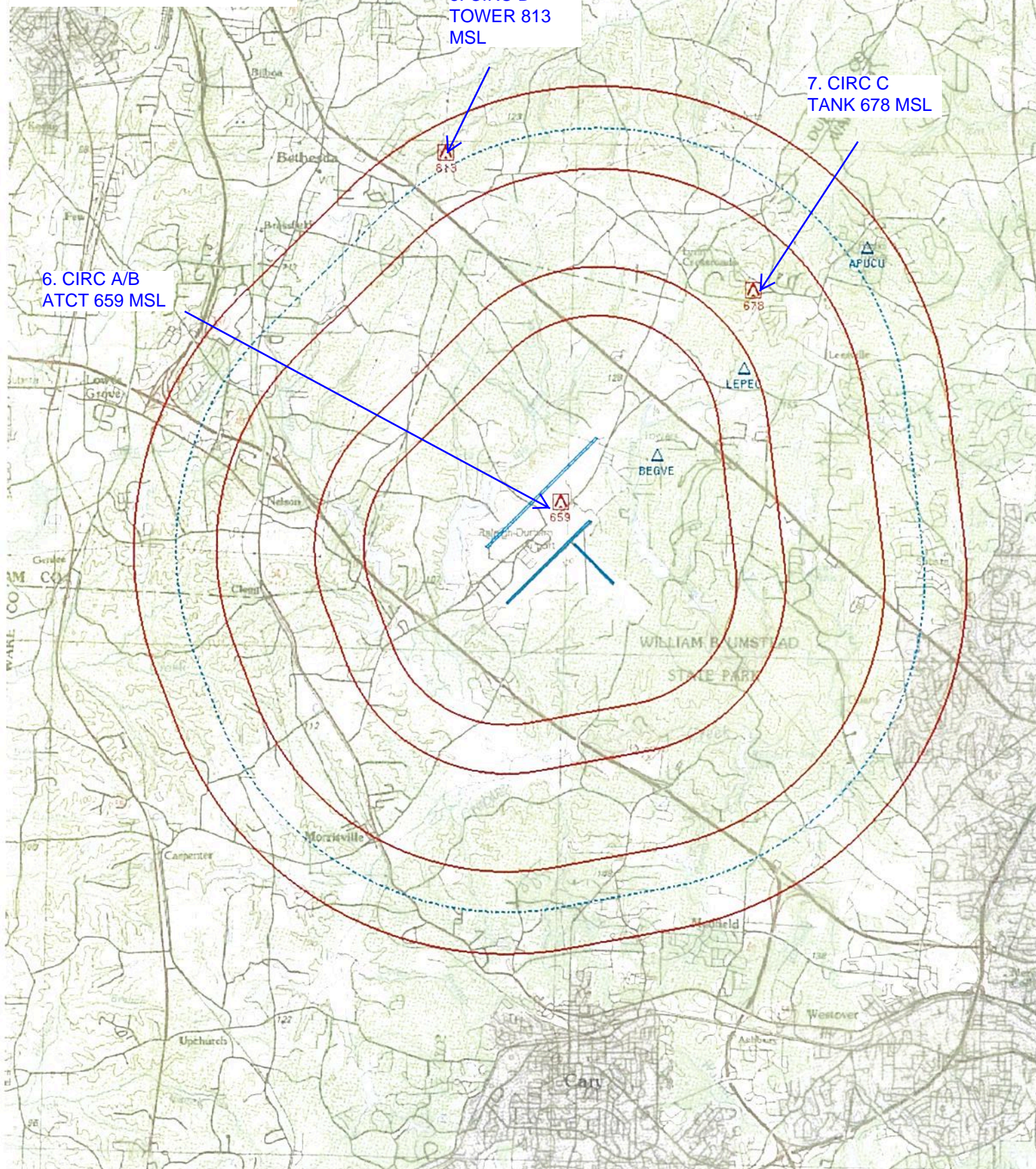


	2200	DUHAM		
	RDU R-351			
			RDU VORTAC	Remain within 10 NM
			RDU 1.6	RDU 3
			132°	312°
			1200	2400
			1.1	1.4 NM
CATEGORY	A	B	C	D
S-32	1200-1 771 (800-1)	1200-1¼ 771 (800-1¼)	1200-2¼ 771 (800-2¼)	1200-2½ 771 (800-2½)
CIRCLING	1200-1 765 (800-1)	1200-1¼ 765 (800-1¼)	1200-2¼ 765 (800-2¼)	1200-2½ 765 (800-2½)
DME MINIMA				
S-32	860-1	431 (500-1)	860-1¼ 431 (500-1¼)	860-1½ 431 (500-1½)
CIRCLING	980-1	545 (600-1)	980-1½ 545 (600-1½)	1060-2 625 (700-2)

SE-2, 01 MAR 2018 to 29 MAR 2018

SE-2, 01 MAR 2018 to 29 MAR 2018

RALEIGH/DURHAM INTL (KRDU)
RALEIGH/DURHAM, NC
CIRCLING
1:100,000



Magnetic Variation (MV) Declination Request

☐ New Assignment ☒ Change

Requested by: Bryan Blue

Organization: AJV-5411

Phone: (405)954-4056

Current Magnetic Declination of Record: 7 ° West

Epoch Year: 1985

New Magnetic Declination of Record: 9 ° West

Epoch Year: 2020

Airport Information Airport ID: KRDU NASR ID (if different):

Airport Name: RALEIGH-DURHAM INTL

Airport City: RALEIGH-DURHAM

State/Country: NC

Navigational Aid Information [ALL Facility IDs and Types]

* Facilities on Airports. At airports with localizer(s) or more than one navigational aid, the MV at the airport reference point (ARP) must be designated and assigned to all facilities at that airport, including all components of the ILS.

I-GKK
I-RDU
I-LEI
I-DMP
RDU VORTAC

Concurrent with Publication of Procedure(s), list all affected procedures and include the AMDT.#

* The Procedure Tracking System (PTS) has Task Report Type "MAGVAR" available. Please add the MAGVAR Report Type Code to all task listed that are affected by the MV update.

TAKEOFF MINIMUMS	VOR RWY 5R, VOR RWY 23L, VOR RWY 32.	BLUE DEVIL FOUR
ILS OR LOC RWY 5L	HOOKZ TWO (RNAV)	FAYETTEVILLE THREE
ILS OR LOC RWY 5R	HURIC TWO (RNAV)	ALDAN ONE
ILS OR LOC RWY 23L	LWOOD TWO (RNAV)	ARGAL FIVE
ILS OR LOC RWY 23R	OZFRD TWO (RNAV)	BLOGS ONE
ILS RWY 5 (SA CAT I-II)	PACKK SEVEN	BRAD E FIVE
ILS RWY 23R (CAT II-III)	RALEIGH EIGHT	BUZZY SIX
RNAV (RNP) Z RWY 5L	ROZBO TWO (RNAV)	KAROO ONE (RNAV)
RNAV (RNP) Z RWY 5R	SHPRD TWO (RNAV)	MALNR THREE (RNAV)
RNAV (RNP) Z RWY 23L	TAR HEEL NINE	SOUTH BOSTON FOUR
RNAV (RNP) Z RWY 23R	BEXGO TWO (RNAV)	

PTS Estimated Chart Date: 2018-03-29 - TPP

Comments:

THE AIRPORT MAGVAR AND ASSOCIATED NAVAIDS WILL BE CHANGED. THE RWY NUMBERS ARE NOT AFFECTED.

Form Submission for Specialists:

Save this form to your computer, then email it
(as an attachment) to your Manager/Supervisor.

For Lead/Manager Use Only

Comments (if applicable):

Lead/Manager:

Phone:

Submit to IFP Coordination Team