

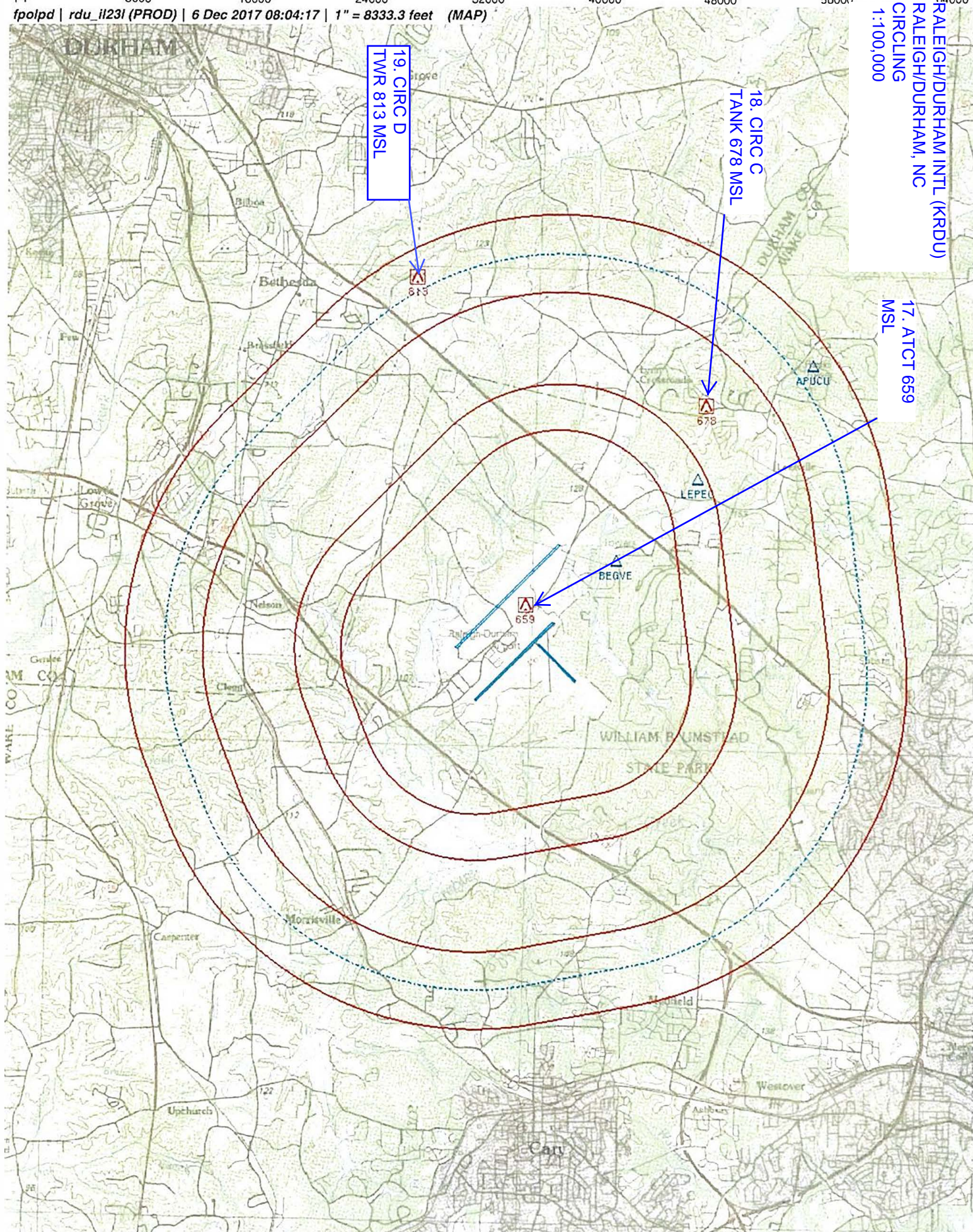
Flight Procedure Tracking Form		Action: FLIGHT CHECK	Task Type: IAP	Date Open: 07/29/2017	Task #: 201705093318780J010	Request #: 20170509331878
Procedure: RNAV (GPS) Y RWY 5L AMDT 1B			Airport ID: KRDU	Airport: RALEIGH-DURHAM INTL		Reimbursable #: NO
City: RALEIGH/DURHAM	ST: NC	GPS #:	Estimated Chart Date: 05/24/2018		FICO #: 1209418	
Fac ID: N/A		Fac. Type:		Specialist: BRYAN BLUE		
Procedure Review						
	Rec'd	Rel'd	Full Name	Comments		
Lead:	07/29/2017	04/09/2018	ANDI LAU	QUALITY		
QA:	04/09/2018	04/09/2018	ANDI LAU	4 4/16CTabaka		
Liaison:	04/09/2018	04/09/2018	MARY MCDONALD	CHECKED		
Procedure Comments:			Remark Type: INFORMATION			
<p>MAGVAR CHANGE ONLY</p> <p>.</p> <p>PENDING AIRPORT DATA USED: MAGVAR: OLD-W7/1985 NEW-W9/2020</p> <p>04/13/2018: THIS IS A CORRECTED COPY OF THE FORM APPROVED ON 03/22/2018. (BWB)</p> <p>1. ON PAGE 1 OF 3, 8260-3, UNDER LNAV MDA MINIMUMS, CHANGED RVR CAT B FROM 2200 TO 2400</p> <p>CONTACT: VIC NASO 405-954-4056</p>						

RALEIGH/DURHAM INTL (KRDU)
RALEIGH/DURHAM, NC
CIRCLING
1:100,000

17. ATCT 659
MSL

18. CIRC C
TANK 678 MSL

19. CIRC D
TWR 813 MSL

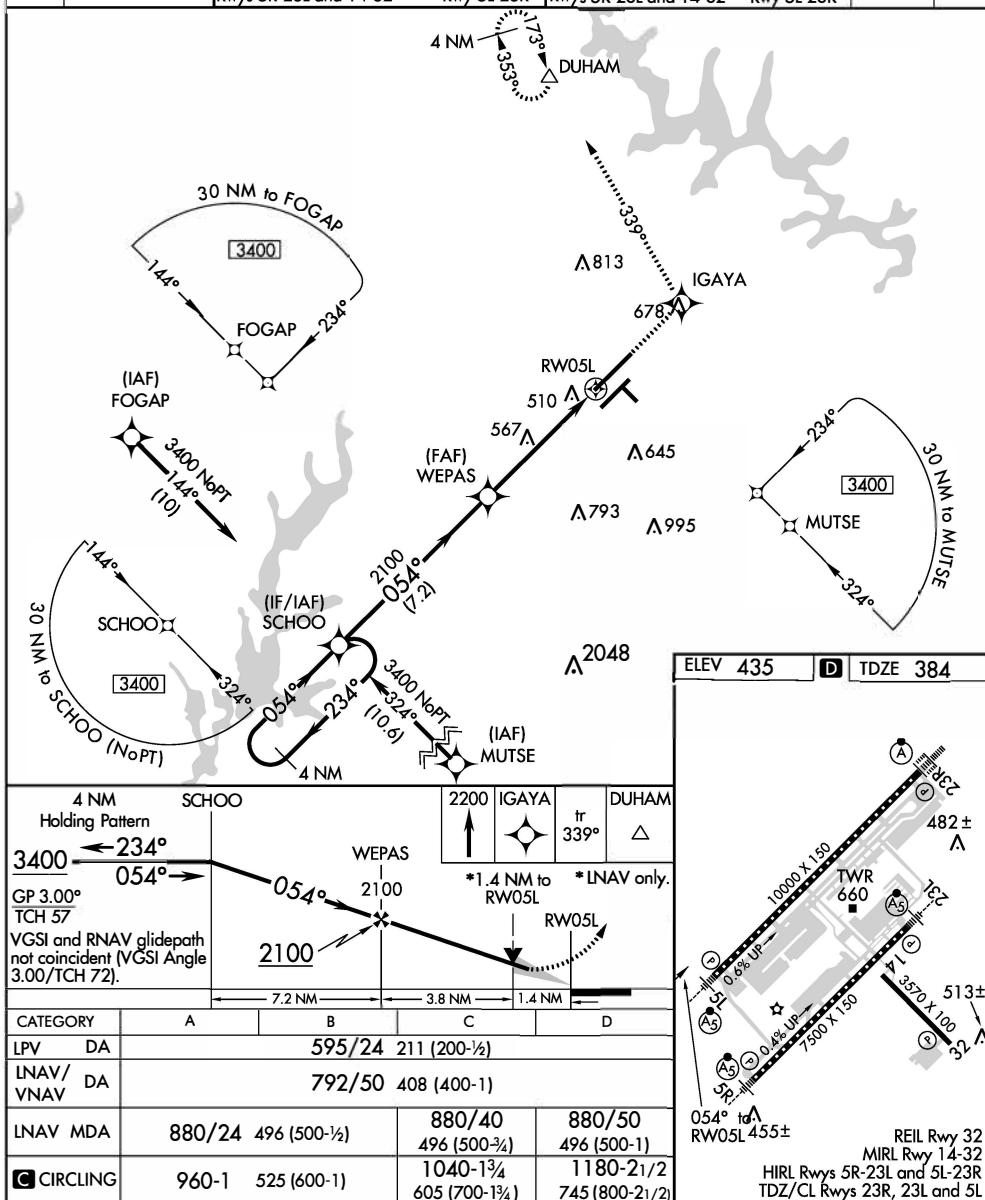


WAAS CH 48813 W05A	APP CRS 054°	Rwy Idg 10000 TDZE 384 Apt Elev 435
--	------------------------	--

RNAV (GPS) Y RWY 5L

RALEIGH-DURHAM INTL (RDU)

RNP APCH			MALSR		MISSED APPROACH: Climb to 2200 direct IGAYA and on track 338° to DUHAM and hold.	
<p>For uncompensated Baro-VNAV systems, LNAV/VNAV NA below -15°C (5°F) or above 48°C (118°F). Simultaneous approach authorized. LNAV procedure NA during simultaneous operations. Use of FD or AP providing RNAV track guidance required during simultaneous operations.</p>						
D-ATIS 123.8	RALEIGH APP CON 128.3 307.9	(EAST) RALEIGH TOWER (WEST) 127.45 257.8 Rwys 5R-23L and 14-32	(EAST) GND CON (WEST) 121.9 348.6 Rwys 5R-23L and 14-32	(EAST) GND CON (WEST) 121.7 348.6 Rwy 5L-23R	CLNC DEL 120.1	CPDLC



RALEIGH/DURHAM, NORTH CAROLINA

Amdt 1B FIG

35°53'N-78°47'W

RALEIGH-DURHAM INTL (RDU)

RNAV (GPS) Y RWY 5L

Magnetic Variation (MV) Declination Request

☐ New Assignment ☒ Change

Requested by: Bryan Blue

Organization: AJV-5411

Phone: (405)954-4056

Current Magnetic Declination of Record: 7 ° West

Epoch Year: 1985

New Magnetic Declination of Record: 9 ° West

Epoch Year: 2020

Airport Information Airport ID: KRDU NASR ID (if different):

Airport Name: RALEIGH-DURHAM INTL

Airport City: RALEIGH-DURHAM

State/Country: NC

Navigational Aid Information [ALL Facility IDs and Types]

* Facilities on Airports. At airports with localizer(s) or more than one navigational aid, the MV at the airport reference point (ARP) must be designated and assigned to all facilities at that airport, including all components of the ILS.

I-GKK
I-RDU
I-LEI
I-DMP
RDU VORTAC

Concurrent with Publication of Procedure(s), list all affected procedures and include the AMDT.#

* The Procedure Tracking System (PTS) has Task Report Type "MAGVAR" available. Please add the MAGVAR Report Type Code to all task listed that are affected by the MV update.

TAKEOFF MINIMUMS	VOR RWY 5R, VOR RWY 23L, VOR RWY 32.	BLUE DEVIL FOUR
ILS OR LOC RWY 5L	HOOKZ TWO (RNAV)	FAYETTEVILLE THREE
ILS OR LOC RWY 5R	HURIC TWO (RNAV)	ALDAN ONE
ILS OR LOC RWY 23L	LWOOD TWO (RNAV)	ARGAL FIVE
ILS OR LOC RWY 23R	OZFRD TWO (RNAV)	BLOGS ONE
ILS RWY 5 (SA CAT I-II)	PACKK SEVEN	BRAD E FIVE
ILS RWY 23R (CAT II-III)	RALEIGH EIGHT	BUZZY SIX
RNAV (RNP) Z RWY 5L	ROZBO TWO (RNAV)	KAROO ONE (RNAV)
RNAV (RNP) Z RWY 5R	SHPRD TWO (RNAV)	MALNR THREE (RNAV)
RNAV (RNP) Z RWY 23L	TAR HEEL NINE	SOUTH BOSTON FOUR
RNAV (RNP) Z RWY 23R	BEXGO TWO (RNAV)	

PTS Estimated Chart Date: 2018-03-29 - TPP

Comments:

THE AIRPORT MAGVAR AND ASSOCIATED NAVAIDS WILL BE CHANGED. THE RWY NUMBERS ARE NOT AFFECTED.

Form Submission for Specialists:

Save this form to your computer, then email it
(as an attachment) to your Manager/Supervisor.

For Lead/Manager Use Only

Comments (if applicable):

Lead/Manager:

Phone:

Submit to IFP Coordination Team