

Flight Procedure Tracking Form		Action: AMENDMENT	Task Type: SID	Date Open: 07/29/2017	Task #: 201705093318780H010	Request #: 20170509331878
Procedure: SID TAR HEEL ONE RALEIGH-DURHAM NC KRDU			Airport ID: KRDU	Airport: RALEIGH-DURHAM INTL	Reimbursable #: NO	
City: RALEIGH/DURHAM	ST: NC	GPS #:	Estimated Chart Date: 05/24/2018		FICO #:	
Fac ID: N/A		Fac. Type:		Specialist: MIKE MELSEN		
Procedure Review						
	Rec'd	Rel'd	Full Name	Comments		
Lead:	07/29/2017	02/12/2018	ALLAN WILL	QUALITY		
QA:	01/02/2018	02/02/2018	ALLAN WILL	4 3/26CTabaka		
Liaison:				CHECKED		
Procedure Comments:			ENROUTE	Remark Type: INFORMATION		
<p>ABBREVIATED AMENDMENT.</p> <p>PENDING AIRNAV RECORD USED FOR KRDU.</p> <p>FLIGHT INSPECTION REVIEW NOT REQUIRED - PROCESSED IAW FLIGHT INSPECTION TEAM (AJW-333) MEMO, MAY 30, 2017.</p> <p>03/23/2018: THIS IS A CORRECTED COPY OF THE FORM APPROVED ON 02/02/2018.</p> <p>8260.15B:</p> <p>1. TRANSITION NAME CAROLINA BEACH - CHANGED FROM CLB 336 BRG TO CLB 156 BRG.</p> <p>CONTACT: JACOB POWERS; 405.954.8702.</p>						

(TARL9.RDU) 17285

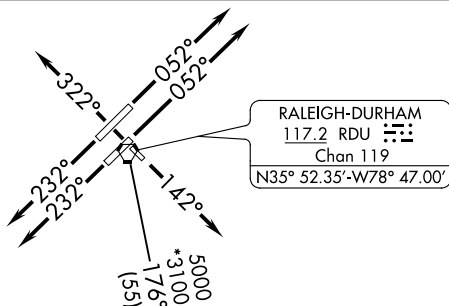
TAR HEEL NINE DEPARTURE

OLD

AL-516 (FAA)

RALEIGH/DURHAM INTL (RDU)
RALEIGH/DURHAM, NORTH CAROLINA

D-ATIS
123.8
CLNC DEL
102.1
CPDLC
RALEIGH DEP CON
125.3 353.675



FAYETTEVILLE
108.8 FAY
Chan 25

ROZBO
N34° 57.40'
W78° 37.62'

CAROLINA
BEACH
216 CLB
N34°06.38'
W77°57.68'
L-35, H-9

SPECIAL INSTRUCTIONS/CHS TRANSITION:
If not receiving CHS at ROZBO, fly heading 215° until receiving CHS suitable for navigation.

NOTE: CAROLINA BEACH
TRANSITION: ADF
REQUIRED.

NOTE: RADAR required.

CHARLESTON
113.5 CHS
Chan 82
N32°53.66'
W80°02.27'
L-24, H-9-12

FL180
214°
(142°)

TAKEOFF MINIMUMS:
Rwys 5L/R: Standard.
Rwy 14: Standard with minimum climb of 230' per NM to 2700.
Rwy 23L: Standard with minimum climb of 250' per NM to 2700.
Rwy 23R: Standard with minimum climb of 240' per NM to 2700.
Rwy 32: 300-1.

NOTE: Chart not to scale.



DEPARTURE ROUTE DESCRIPTION

TAKEOFF RWYS 5L/5R: Climb heading 052° or as assigned by ATC, thence. . . .
TAKEOFF RWY 14: Climb heading 142° or as assigned by ATC, thence. . . .
TAKEOFF RWY 23L/R: Climb heading 232° or as assigned by ATC, thence. . . .
TAKEOFF RWY 32: Climb heading 322° or as assigned by ATC, thence. . . .

. . . . expect vectors to join filed route/fix. Expect clearance to filed altitude/flight level ten minutes after departure.

CAROLINA BEACH TRANSITION (TARL9.CLB): From over RDU VORTAC via RDU R-176 to ROZBO INT, then via CLB 156° bearing to CLB NDB.
CHARLESTON TRANSITION (TARL9.CHS): From over RDU VORTAC via RDU R-176 to ROZBO INT, then via CHS R-304 to CHS VORTAC.

TAR HEEL NINE DEPARTURE
(TARL9.RDU) 30APR15

RALEIGH/DURHAM, NORTH CAROLINA
RALEIGH-DURHAM INTL (RDU)

SE-2: 07 DEC 2017 to 04 JAN 2018

SE-2: 07 DEC 2017 to 04 JAN 2018