


<b>Flight Procedure Tracking Form</b>		<b>Action:</b> AMENDMENT	<b>Task Type:</b> SID	<b>Date Open:</b> 07/29/2017	<b>Task #:</b> 201705093318780H003	<b>Request #:</b> 20170509331878
<b>Procedure:</b> SID BLUE DEVIL FIVE RALEIGH-DURHAM NC KRDU			<b>Airport ID:</b> KRDU	<b>Airport:</b> RALEIGH-DURHAM INTL		<b>Reimbursable #:</b> NO
<b>City:</b> RALEIGH/DURHAM	<b>ST:</b> NC	<b>GPS #:</b>	<b>Estimated Chart Date:</b> 05/24/2018		<b>FICO #:</b>	
<b>Fac ID:</b> N/A		<b>Fac. Type:</b>		<b>Specialist:</b> MIKE MELSEN		
<b>Procedure Review</b>						
	<b>Rec'd</b>	<b>Rel'd</b>	<b>Full Name</b>	<b>Comments</b>		
<b>Lead:</b>	07/29/2017	02/12/2018	ALLAN WILL	<div style="text-align: center;">  </div>		
<b>QA:</b>	01/02/2018	02/02/2018	ALLAN WILL			
<b>Liaison:</b>						
<b>Procedure Comments:</b>			<b>Remark Type:</b> INFORMATION			
<p>ABBREVIATED AMENDMENT.</p> <p>PENDING AIRNAV RECORD USED FOR KRDU. RDU VORTAC MAG VAR CHANGING FROM 4W/1965 TO 5W/2020.</p> <p>FLIGHT INSPECTION REVIEW NOT REQUIRED - PROCESSED IAW FLIGHT INSPECTION TEAM (AJW-333) MEMO, MAY 30, 2017.</p> <p>03/23/2018: THIS IS A CORRECTED COPY OF THE FORM APPROVED ON 02/02/2018. 8260.15B 1. CHANGED FROM "DAN VORTAC" TO "DAN VOR" UNDER TRANSITION NAME TO FIX/NAVAID.</p> <p>CONTACT: JACOB POWERS; 405.954.8702.</p>						

OLD

(BLUE4.RDU) 17285

AL-516 (FAA)

RALEIGH-DURHAM INTL (RDU)

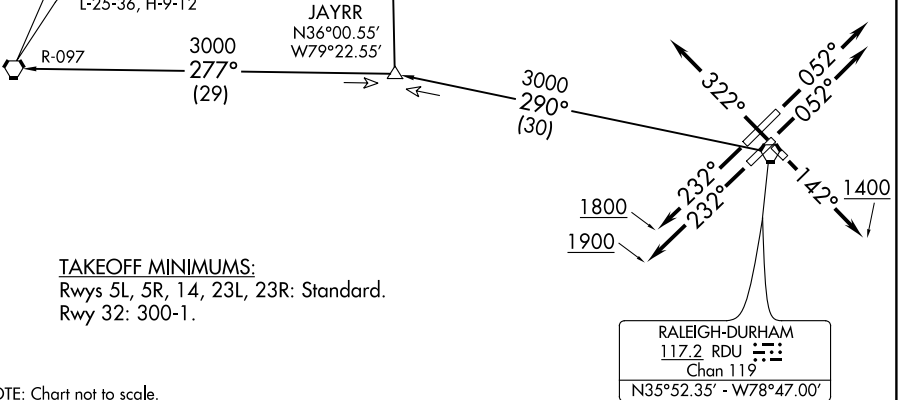
RALEIGH/DURHAM, NORTH CAROLINA

# BLUE DEVIL FOUR DEPARTURE

D-ATIS  
123.8  
CLNC DEL  
120.1  
CPDLC  
RALEIGH DEP CON  
132.35 256.9

GREENSBORO  
116.2 GSO  
Chan 109  
N36°02.74' - W79°58.58'  
L-25-36, H-9-12

DANVILLE  
113.1 DAN  
N36°34.13' - W79°20.20'  
L-26-36



TAKEOFF MINIMUMS:  
Rwys 5L, 5R, 14, 23L, 23R: Standard.  
Rwy 32: 300-1.

NOTE: Chart not to scale.



## DEPARTURE ROUTE DESCRIPTION

TAKEOFF RWY 5L: Climb heading 052°, thence. . .

TAKEOFF RWY 5R: Climb heading 052°, thence. . .

TAKEOFF RWY 14: Climb heading 142° to 1400, thence. . .

TAKEOFF RWY 23L: Climb heading 232° to 1900, thence. . .

TAKEOFF RWY 23R: Climb heading 232° to 1800, thence. . .

TAKEOFF RWY 32: Climb heading 322°, thence. . .

. . . or as assigned for vectors to assigned transition. Expect clearance to filed altitude/flight level ten minutes after departure.

DANVILLE TRANSITION (BLUE4.DAN): From over RDU VORTAC via RDU R-290 to JAYRR INT then via DAN R-189 to DAN VOR.

GREENSBORO TRANSITION (BLUE4.GSO): From over RDU VORTAC via RDU R-290 to JAYRR INT then via GSO R-097 to GSO VORTAC.

# BLUE DEVIL FOUR DEPARTURE

(BLUE4.RDU) 03AUG06

RALEIGH/DURHAM, NORTH CAROLINA  
RALEIGH-DURHAM INTL (RDU)

SE-2: 07 DEC 2017 to 04 JAN 2018

SE-2: 07 DEC 2017 to 04 JAN 2018