

**FEDERAL AVIATION ADMINISTRATION
FLIGHT STANDARDS SERVICE
STANDARD TERMINAL ARRIVAL (STAR)**

Bearings, headings, courses, tracks and radials are magnetic. Elevations and altitudes are in feet, MSL. Altitudes are minimum altitudes unless otherwise indicated.
Ceilings are in feet above airport elevation. Distances are in nautical miles. Visibilities are in statute miles or feet RVR unless otherwise indicated.

<u>Arrival Name</u>	<u>Number</u>	<u>STAR Computer Code</u>	<u>Superseded Number</u>	<u>Dated</u>	<u>Effective Date</u>
BRBBQ (RNAV)	THREE	BRBBQ.BRBBQ3	TWO	11/10/2016	

TRANSITION ROUTES:

Transition Name	Transition Computer Code	From FIX/NAVAID	To FIX/NAVAID	Course	Distance	MEA	MOCA	MAA	Crossing Altitude/Fixes
FORT SMITH	FSM.BRBBQ3	FSM VORTAC	FSM VORTAC						
			IGLOO	078.53	126.67	FL180	3400		
			SAUCC	115.27	24.51	10000	2500		AT/BELOW FL260
			BRBBQ	115.55	21.15	10000	1700		AT/BELOW FL230
IGLOO	IGLOO.BRBBQ3	IGLOO	IGLOO						
			SAUCC	115.27	24.51	10000	2500		AT/BELOW FL260
			BRBBQ	115.55	21.15	10000	1700		AT/BELOW FL230
RAZORBACK	RZC.BRBBQ3	RZC VORTAC	RZC VORTAC						
			MARBI	102.75	34.20	FL180	3500		
			IGLOO	103.16	84.65	FL180	3700		
			SAUCC	115.27	24.51	10000	2500		AT/BELOW FL260
			BRBBQ	115.55	21.15	10000	1700		AT/BELOW FL230
WHOLL	WHOLL.BRBBQ3	WHOLL	WHOLL						
			HOOOG	154.80	24.25	FL180	2000		AT/BELOW FL260

**FEDERAL AVIATION ADMINISTRATION
FLIGHT STANDARDS SERVICE
STANDARD TERMINAL ARRIVAL (STAR)**

Bearings, headings, courses, tracks and radials are magnetic. Elevations and altitudes are in feet, MSL. Altitudes are minimum altitudes unless otherwise indicated.
Ceilings are in feet above airport elevation. Distances are in nautical miles. Visibilities are in statute miles or feet RVR unless otherwise indicated.

<u>Arrival Name</u>	<u>Number</u>	<u>STAR Computer Code</u>	<u>Superseded Number</u>	<u>Dated</u>	<u>Effective Date</u>
BRBBQ (RNAV)	THREE	BRBBQ.BRBBQ3	TWO	11/10/2016	
	BRBBQ	155.02	20.99	10000	1700
					AT/BELOW FL230

ARRIVAL ROUTE DESCRIPTION:

LANDING SOUTH: RWY 18L/C/R/9/27: FROM BRBBQ ON TRACK 113.19/13.02 TO CROSS JAMLA AT 10000 AND AT 230 KIAS (MEA 7000/MOCA 1800), THEN ON TRACK 113.19. EXPECT RADAR VECTORS TO FINAL APPROACH COURSE.

LANDING NORTH: RWY 36L/C/R: FROM BRBBQ ON TRACK 115.74/11.09 TO CROSS FNCHR BETWEEN 14000 AND 16000 AND AT 280 KIAS (MEA 7000/MOCA 1800), THEN ON TRACK 116.01/11.15 TO RDEE (MEA 6000/MOCA 1800), THEN ON TRACK 130.28/4.65 TO JESTI (MEA 6000/MOCA 1600), THEN ON TRACK 130.12/4.63 TO CROSS BEERT BETWEEN 10000 AND 12000 AND AT 250 KIAS (MEA 6000/MOCA 1600), THEN ON TRACK 130.19/10.00 TO CROSS LOONR BETWEEN 9000 AND 11000 (MEA 6000/MOCA 1600), THEN ON TRACK 130.28/4.00 TO CROSS BOWEN BETWEEN 8000 AND 10000 AND AT 210 KIAS (MEA 4000/MOCA 1600), THEN ON TRACK 181.89/4.50 TO CROSS JIMGA BETWEEN 6000 AND 8000 (MEA 4000/MOCA 2100), THEN ON TRACK 179.42/13.50 TO CROSS JAYWA AT 4000 (MEA 4000/MOCA 1600), THEN ON TRACK 179.42. EXPECT RADAR VECTORS TO FINAL APPROACH COURSE.

PROCEDURAL DATA NOTES:

NOTE: DESCEND VIA MACH NUMBER UNTIL TRANSITION TO 290 KIAS.

NOTE: RADAR REQUIRED

NOTE: RNAV 1

NOTE: DME/DME/IRU OR GPS REQUIRED

NOTE: TURBOJET AIRCRAFT ONLY.

NOTE: EXPECT TO RECEIVE LANDING DIRECTION (NORTH/SOUTH) AND "DESCEND VIA" CLEARANCE FROM MEMPHIS CENTER, MEMPHIS APPROACH WILL ASSIGN LANDING RUNWAY.

NOTE: LANDING SOUTH INDICATES RWY 18L/18C/18R/9/27.

NOTE: LANDING NORTH INDICATES RWY 36L/36C/36R.

CHART: CROSS SAUCC AT 290 KIAS. CROSS BRBBQ AT 280 KIAS. CROSS HOOOG AT 290 KIAS

FIXES AND/OR HOLDING PATTERNS:

CHART HOLDING AT MARBI: W, RT, 103.16 INBOUND, 15 NM LEGS.

CHART HOLDING AT IGLOO: NW, LT, 115.27 INBOUND, 15 NM LEGS.

CHART HOLDING AT WHOLL: NW, LT, 154.80 INBOUND, 15NM LEGS.

CHART HOLDING AT BRBBQ: NW, LT, 115.55 INBOUND, 15 NM LEGS.

CHART HOLDONG AT BEERT: NW, RT, 130.19 INBOUND, 8 NM LEGS.

COMMUNICATIONS:

APP CON
ARR ATIS

AIRPORTS SERVED:

AIRPORT NAME	CITY	STATE
MEMPHIS INTL	MEMPHIS	TN

LOST COMMUNICATIONS PREFERENCES:



**FEDERAL AVIATION ADMINISTRATION
FLIGHT STANDARDS SERVICE
STANDARD TERMINAL ARRIVAL (STAR)**

Bearings, headings, courses, tracks and radials are magnetic. Elevations and altitudes are in feet, MSL. Altitudes are minimum altitudes unless otherwise indicated.
Ceilings are in feet above airport elevation. Distances are in nautical miles. Visibilities are in statute miles or feet RVR unless otherwise indicated.

<u>Arrival Name</u>	<u>Number</u>	<u>STAR Computer Code</u>	<u>Superseded Number</u>	<u>Dated</u>	<u>Effective Date</u>
BRBBQ (RNAV)	THREE	BRBBQ.BRBBQ3	TWO	11/10/2016	

REMARKS:

MINOR AMENDMENT DOES NOT MEET PERIODIC REVIEW REQUIREMENTS.

ADDITIONAL FLIGHT DATA:

DME/DME ASSESSMENT: SAT (RNP 2.0)
REFERENCE MAG VAR: KMEM 02W/2020.
CHART AT JAYWA: "LANDING NORTH: RWY 36L/36C/36R: EXPECT RADAR VECTORS TO FINAL APPROACH COURSE AFTER JAYWA."
CHART AT JAMLA: "LANDING SOUTH: RWY 18L/18C/18R/9/27: EXPECT RADAR VECTORS TO FINAL APPROACH COURSE AFTER JAMLA."
DO NOT CHART MOCAs

FLIGHT INSPECTED BY:

ORGANIZATION:

DATE:

FLIGHT INSPECTION REVIEW NOT REQUIRED-PROCESSED IAW FLIGHT INSPECTION TEAM (AJW-333) MEMO, MAY 30, 2017.

Flight Inspected Signature:

Digitally signed by
ADOLFO D URRUTIA
Oct 24, 2017

DEVELOPED BY:

LIAM DONAHUE

AJV-5431

09/27/2017

Developed By Signature:

Digitally signed by
LIAM DONAHUE
Sep 27, 2017

APPROVED BY:

PATRICK MULQUEEN

AJV-5430

Approved By Signature:

Digitally signed by
ADOLFO D URRUTIA
Oct 24, 2017

CHANGES:

1. INCREASED ALL COURSES AND HEADINGS 2 DEGREES.
2. CHANGED REFERENCE MAGVAR AND EPOCH YEAR IN ADDITIONAL FLIGHT DATA FROM 1E/2000 TO 1W/2020.
3. CHANGED RECOMMENDED NAVAID FROM MEM VORTAC TO SYI VOR/DME.

REASONS:

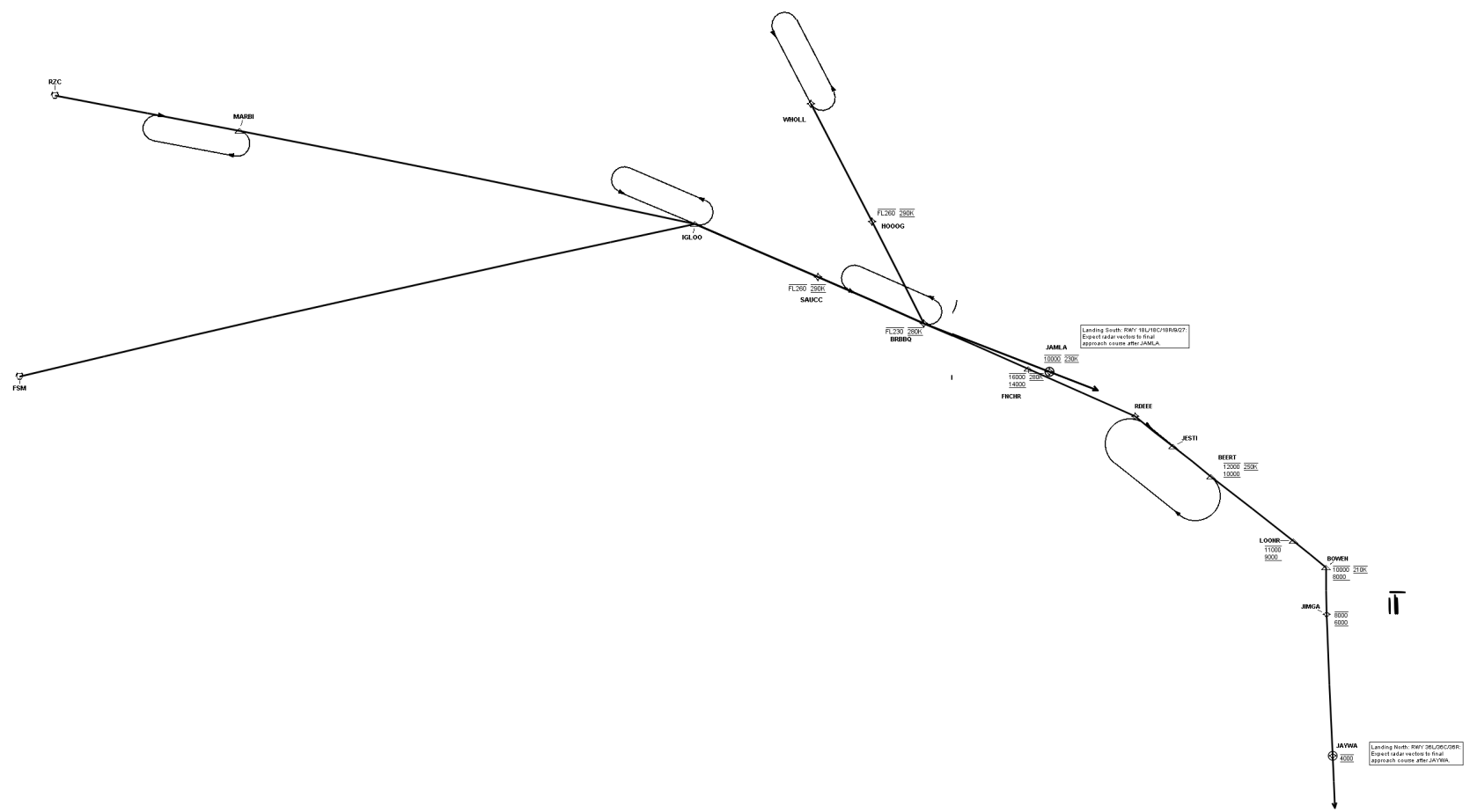
- 1, 2. AIRPORT MAGNETIC VARIATION CHANGED FROM 1 DEGREE EAST TO 1 DEGREE WEST.
3. REQUIRED DUE TO MAGNETIC VARIATION CHANGE.

FEDERAL AVIATION ADMINISTRATION FLIGHT STANDARDS SERVICE STANDARD TERMINAL ARRIVAL (STAR)

Bearings, headings, courses, tracks and radials are magnetic. Elevations and altitudes are in feet, MSL. Altitudes are minimum altitudes unless otherwise indicated.
Ceilings are in feet above airport elevation. Distances are in nautical miles. Visibilities are in statute miles or feet RVR unless otherwise indicated.

Arrival Name	Number	STAR Computer Code	Superseded Number	Dated	Effective Date
BRBBQ (RNAV)	THREE	BRBBQ.BRBBQ3	TWO	11/10/2016	

Title



**FEDERAL AVIATION ADMINISTRATION
FLIGHT STANDARDS SERVICE
STAR (DATA RECORD)**

Arrival Name	Number	STAR Computer Code	Superseded Number	Dated	Effective Date
BRBBQ (RNAV)	THREE	BRBBQ.BRBBQ3	TWO	11/10/2016	

FIX/NAVAID	LAT/LONG	C	FO/FB	LEG TYPE	TC	DIST (NM)	ALTITUDE	SPEED	REMARKS
------------	----------	---	-------	----------	----	-----------	----------	-------	---------

EN ROUTE TRANSITION

FSM VORTAC	352318.30N/0941617.49W	Y		IF					FSM.BRBBQ3
------------	------------------------	---	--	----	--	--	--	--	------------

IGLOO	354906.52N/0914411.55W	Y	FB	TF	077.53	126.67			
-------	------------------------	---	----	----	--------	--------	--	--	--

SAUCC	353857.92N/0911646.46W	Y	FB	TF	114.27	24.51	AT/BELOW FL260	AT 290K	
-------	------------------------	---	----	----	--------	-------	----------------	---------	--

BRBBQ	353007.56N/0905312.57W	Y	FB	TF	114.55	21.15	AT/BELOW FL230	AT 280K	
-------	------------------------	---	----	----	--------	-------	----------------	---------	--

EN ROUTE TRANSITION

IGLOO	354906.52N/0914411.55W	Y		IF					IGLOO.BRBBQ3
-------	------------------------	---	--	----	--	--	--	--	--------------

SAUCC	353857.92N/0911646.46W	Y	FB	TF	114.27	24.51	AT/BELOW FL260	AT 290K	
-------	------------------------	---	----	----	--------	-------	----------------	---------	--

BRBBQ	353007.56N/0905312.57W	Y	FB	TF	114.55	21.15	AT/BELOW FL230	AT 280K	
-------	------------------------	---	----	----	--------	-------	----------------	---------	--

EN ROUTE TRANSITION

RZC VORTAC	361447.14N/0940717.01W	Y		IF					RZC.BRBBQ3
------------	------------------------	---	--	----	--	--	--	--	------------

MARBI	360741.55N/0932557.20W	Y	FB	TF	101.75	34.20			
-------	------------------------	---	----	----	--------	-------	--	--	--

IGLOO	354906.52N/0914411.55W	Y	FB	TF	102.16	84.65			
-------	------------------------	---	----	----	--------	-------	--	--	--



**FEDERAL AVIATION ADMINISTRATION
FLIGHT STANDARDS SERVICE
STAR (DATA RECORD)**

Arrival Name	Number	STAR Computer Code	Superseded Number	Dated	Effective Date
BRBBQ (RNAV)	THREE	BRBBQ.BRBBQ3	TWO	11/10/2016	

FIX/NAVAID	LAT/LONG	C	FO/FB	LEG TYPE	TC	DIST (NM)	ALTITUDE	SPEED	REMARKS
SAUCC	353857.92N/0911646.46W	Y	FB	TF	114.27	24.51	AT/BELOW FL260	AT 290K	
BRBBQ	353007.56N/0905312.57W	Y	FB	TF	114.55	21.15	AT/BELOW FL230	AT 280K	
EN ROUTE TRANSITION									
WHOLL	361049.68N/0911738.03W	Y		IF					WHOLL.BRBBQ3
HOOOG	354901.73N/0910428.14W	Y	FB	TF	153.80	24.25	AT/BELOW FL260	AT 290K	
BRBBQ	353007.56N/0905312.57W	Y	FB	TF	154.02	20.99	AT/BELOW FL230	AT 280K	
RUNWAY TRANSITION									
BRBBQ	353007.56N/0905312.57W	Y		IF			AT/BELOW FL230	AT 280K	
JAMLA	352511.21N/0903827.90W	Y	FO	TF	112.19	13.02	AT 10000	AT 230K	
KMEM: RWY 09, RWY 18C, RWY 18L, RWY 18R, RWY 27				FM	112.19				RECOMMENDED NAVAID: SYI VOR/DME
RUNWAY TRANSITION									
BRBBQ	353007.56N/0905312.57W	Y		IF			AT/BELOW FL230	AT 280K	

QUALITY
14
CHECKED

**FEDERAL AVIATION ADMINISTRATION
FLIGHT STANDARDS SERVICE
STAR (DATA RECORD)**

Arrival Name	Number	STAR Computer Code	Superseded Number	Dated	Effective Date
BRBBQ (RNAV)	THREE	BRBBQ.BRBBQ3	TWO	11/10/2016	

FIX/NAVAID	LAT/LONG	C	FO/FB	LEG TYPE	TC	DIST (NM)	ALTITUDE	SPEED	REMARKS
FNCHR	352528.06N/0904053.28W	Y	FB	TF	114.74	11.09	14000B16000	AT 280K	
RDEEE	352044.16N/0902832.20W	Y	FB	TF	115.01	11.15			
JESTI	351747.35N/0902408.60W	Y	FB	TF	129.28	04.65			
BEERT	351451.55N/0901945.19W	Y	FB	TF	129.12	04.63	10000B12000	AT 250K	
LOONR	350831.48N/0901018.11W	Y	FB	TF	129.19	10.00	9000B11000		
BOWEN	350559.25N/0900631.69W	Y	FB	TF	129.28	04.00	8000B10000	AT 210K	
JIMGA	350128.85N/0900636.79W	Y	FB	TF	180.89	04.50	6000B8000		
JAYWA	344757.65N/0900609.62W	Y	FO	TF	178.42	13.50	AT 4000		
KMEM: RWY 36C, RWY 36L, RWY 36R				FM	178.42				RECOMMENDED NAVAID: SYI VOR/DME

