

Flight Procedure Tracking Form		Action: FLIGHT CHECK	Task Type: IAP	Date Open: 05/12/2017	Task #: 2017050933187804006	Request #: 20170509331878
Procedure: RNAV (GPS) RWY 4L AMDT 1D			Airport ID: KLIT	Airport: BILL AND HILLARY CLINTON NATIONAL/ADAMS FIELD		Reimbursable #: NO
City: LITTLE ROCK	ST: AR	GPS #:	Estimated Chart Date: 03/29/2018		FICO #:	
Fac ID: N/A		Fac. Type:			Specialist: KISSY MAXFIELD	
Procedure Review						
	Rec'd	Rel'd	Full Name	Comments		
Lead:	05/12/2017	11/14/2017	KISSY MAXFIELD	QUALITY		
QA:	11/14/2017			20 B. Bickett 12/05/2017		
Liaison:				CHECKED		
Procedure Comments:			Remark Type: INFORMATION			
<p>APT LIT MAGVAR OLD: 2E, NEW: 0E PENDING DATA USED FOR KLIT AIRPORT SPECIAL FLIGHT CHECK INSTRUCTIONS: ABBREVIATED AMENDMENT, REQUEST TABLE TOP REVIEW. CIRCLING UPDATED TO MATCH ILS OR LOC RWY 4L, AMDT 26A.</p> <p>CONTACT ALLAN WILL 405.954.6103</p>						

WAAS CH 90411 W04A	APP CRS 046°	Rwy Idg TDZE Apt Elev	7976 258 266
--	------------------------	-----------------------------	---

NEW**RNAV (GPS) RWY 4L**

BILL AND HILLARY CLINTON NATIONAL/ADAMS FIELD (LIT)

▼ For uncompensated Baro-VNAV systems, LNAV/VNAV NA below -15°C (5°F) or above 48°C (118°F). Rwy 4L helicopter visibility reduction below $\frac{3}{4}$ SM NA.
▲ DME/DME RNP-0.3 NA. For inop ALS, increase LNAV Cat A and B visibility to RVR 5000.
ASR Simultaneous approach authorized. LNAV procedure NA during simultaneous operations. Use of FD or AP required during simultaneous operations.

MALSR



MISSED APPROACH:
Climb to 2900 direct ODXIH and on track 052° to BRAUM and hold.

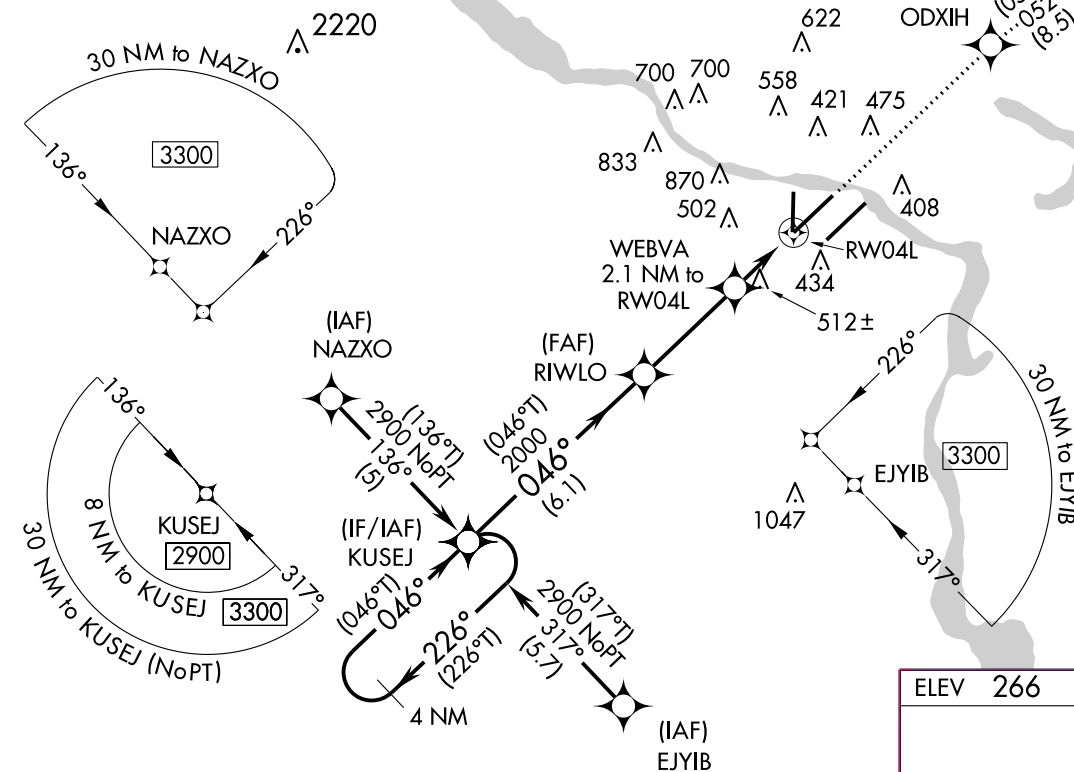
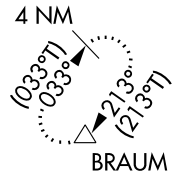
D-ATIS
125.65

LITTLE ROCK APP CON
135.4 291.775 353.6

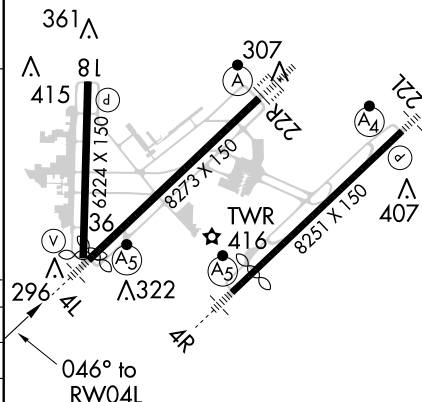
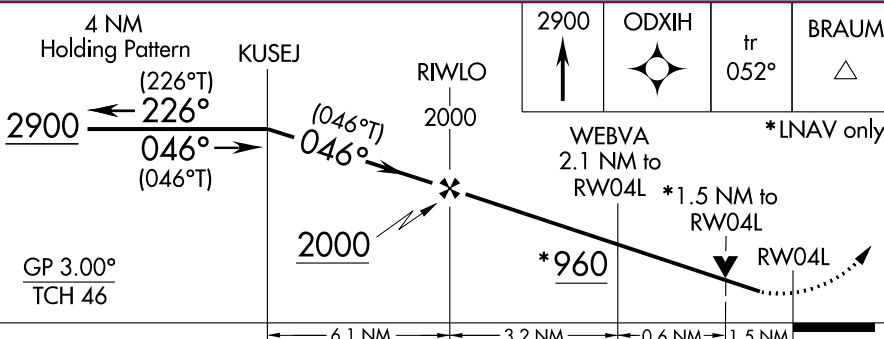
ADAMS TOWER
118.7 257.8

GND CON
121.9 339.8

CLNC DEL
118.95

PROTOTYPE-NOT FOR NAVIGATION**MISSED APCH FIX**

ELEV 266 **D** TDZE 258



CATEGORY	A	B	C	D
LPV DA	544/40	286 (300- $\frac{3}{4}$)		
LNAV/VNAV DA	824-1 $\frac{1}{2}$	566 (600-1 $\frac{1}{2}$)		
LNAV MDA	780/40	522 (600- $\frac{3}{4}$)	780/55	522 (600-1 $\frac{1}{4}$)
C CIRCLING	820-1 554 (600-1)	1000-1 734 (800-1)	1180-2 $\frac{3}{4}$ 914 (1000-2 $\frac{3}{4}$)	1180-3 914 (1000-3)

TDZ/CL Rwy 22R
HIRL Rws 4R-22L, 4L-22R and 18-36

OLD / EXISTING

LITTLE ROCK, ARKANSAS

AL-233 (FAA)

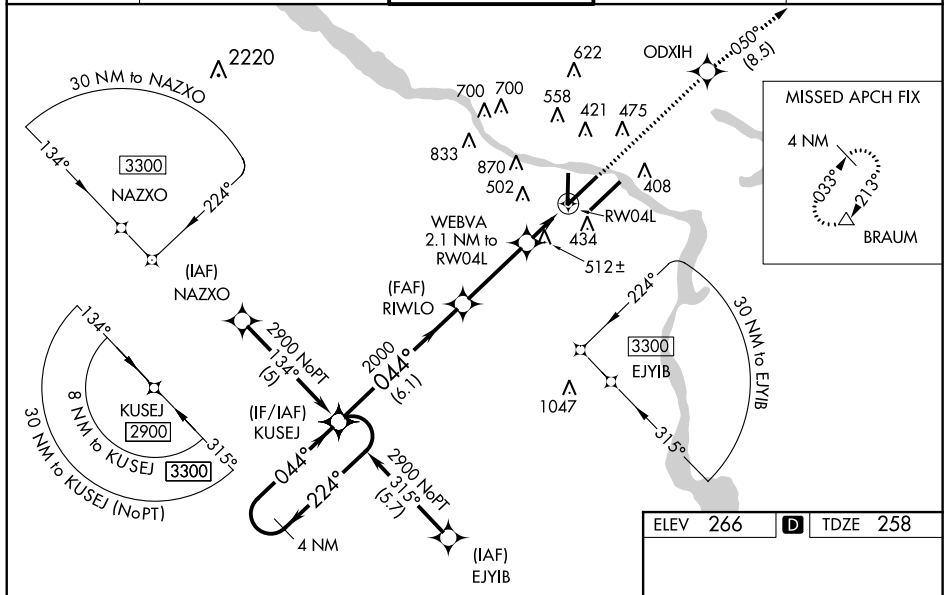
17117

WAAS CH 90411 W04A	APP CRS 044°	Rwy Idg TDZE Apt Elev	7976 258 266
--	------------------------	-----------------------------	---

RNAV (GPS) RWY 4L BILL AND HILLARY CLINTON NATIONAL/ADAMS FIELD (LIT)

<p>⚠ For uncompensated Baro-VNAV systems, LNAV/VNAV NA below -15°C (5°F) or above 48°C (118°F). DME/DME RNP-0.3 NA. Visibility reduction by helicopters NA. When local altimeter setting not received, use Stuttgart altimeter setting and increase all DA 82 feet and all MDA 100 feet; increase LNAV/VNAV all Cats visibility ¼ mile, increase LNAV Cat C and D visibility ¼ mile, and increase Circling Cat C visibility ¼ mile. Baro-VNAV and VDP NA when using Stuttgart altimeter setting. For inop MALS, increase LNAV Cat A and B visibility to RVR 5000. For inop MALS, when using Stuttgart altimeter setting, increase LPV all Cats visibility to RVR 6000, LNAV Cat A and B visibility to RVR 5000. Simultaneous approach authorized with ILS or LOC Rwy 4R. LNAV procedure NA during simultaneous operations. Use of FD or AP providing RNAV track guidance required during simultaneous operations.</p>	<p>MALS</p> <p>(A5)</p>	<p>MISSED APPROACH: Climb to 2900 direct ODXIH and on track 050° to BRAUM and hold.</p>
--	--------------------------------	---

D-ATIS 125.65	LITTLE ROCK APP CON 135.4 291.775 353.6	ADAMS TOWER 118.7 257.8	GND CON 121.9 339.8	CLNC DEL 118.95
-------------------------	---	-----------------------------------	-------------------------------	---------------------------



4 NM Holding Pattern		KUSEJ		RIWLO		2900 ↑		ODXIH ✦		tr 050°		BRAUM △		
2900 ← 224° 044° →		044°		2000		*960		WEBVA 2.1 NM to RW04L		*1.5 NM to RW04L		*LNAV only		
GP 3.00° TCH 46														
		6.1 NM		3.2 NM		0.6 NM		1.5 NM						
CATEGORY	A		B		C		D							
LPV DA	544/40		286 (300-¾)											
LNAV/ VNAV DA	824-1½		566 (600-1½)											
LNAV MDA	780/40		522 (600-¾)		780/55		522 (600-1½)							
CIRCLING	800-1		534 (600-1)		940-2 674 (700-2)		1180-3 914 (1000-3)							

361
81
415
361
307
22R
296
322
416
407
044° to
RW04L

TDZ/CL Rwy 22R
HIRL Rws 4R-22L, 4L-22R and 18-36

LITTLE ROCK, ARKANSAS
Amdt 1C 29MAY14

BILL AND HILLARY CLINTON NATIONAL/ADAMS FIELD (LIT)
34°44'N-92°13'W
RNAV (GPS) RWY 4L

SC-1, 09 NOV 2017 to 07 DEC 2017

SC-1, 09 NOV 2017 to 07 DEC 2017

KLIT, LITTLE ROCK, AR
BILL AND HILLARY CLINTON NATIONAL/
ADAMS FIELD
RNAV (GPS) RWY 4L AMDT 1D
CIRCLING
11/13/17
1:100,000

19

20

18

LIT
Transverse Mercator
Scale 1:100000

Federal Aviation Administration

Initial Development Notification for AIRNAV Pending Records

To: Janet Myers, National Flight Data Center, Sub Team B, AJV-5332

From: Lonnie Everhart, Manager IFP Coordination Team, AJV-531

Subject: **ACTION:** Request for Pending Records **KLIT_LIT_AAY BILL AND HILLARY CLINTON NATIONAL/ADAMS FIELD
LITTLE ROCK AR US**

The Magnetic Variation (MV) data for the airport(s) and/or facility(s) listed will be revised effective concurrent with the publication of the procedure(s) listed below. Estimated Chart Date: 2/1/2018

Current/Assigned MV 2000 New MV 2020

ECD	Airport ID		Procedure Name	AMDT #	Task Report Type Selections
2/1/2018	KLIT	LIT	ILS OR LOC RWY 22L AMDT 0D	2	ABBREV AMEND, CAT II, CAT III, ENROUT
2/1/2018	KLIT	LIT	ILS OR LOC RWY 4L AMDT 26A	27	ABBREV AMEND, CAT II, CAT III, ENROUT
2/1/2018	KLIT	LIT	ILS OR LOC RWY 4R AMDT 2D	4	ABBREV AMEND, CAT II, CAT III, ENROUT
2/1/2018	KLIT	LIT	LITTLE ROCK AR KLIT AMDT 8A	/A	ABBREV AMEND, CAT II, CAT III, ENROUT
2/1/2018	KLIT	LIT	RADAR 1 AMDT 17B	/A	ABBREV AMEND, CAT II, CAT III, ENROUT
2/1/2018	KLIT	LIT	RNAV (GPS) RWY 18 AMDT 1E	4	ABBREV AMEND, CAT II, CAT III, ENROUT
2/1/2018	KLIT	LIT	RNAV (GPS) RWY 22L AMDT 1D	3	ABBREV AMEND, CAT II, CAT III, ENROUT
2/1/2018	KLIT	LIT	RNAV (GPS) RWY 22R AMDT 1C	3	ABBREV AMEND, CAT II, CAT III, ENROUT
2/1/2018	KLIT	LIT	RNAV (GPS) RWY 36 AMDT 0C	2	ABBREV AMEND, CAT II, CAT III, ENROUT
2/1/2018	KLIT	LIT	RNAV (GPS) RWY 4L AMDT 1D	3	ABBREV AMEND, CAT II, CAT III, ENROUT
2/1/2018	KLIT	LIT	RNAV (GPS) RWY 4R AMDT 1D	3	ABBREV AMEND, CAT II, CAT III, ENROUT
12/25/2025	KLIT	LIT	ILS RWY 21 R AMDT 3A	/A	ABBREV AMEND, AIS INITIATED, CAT II, C

NAVAID ID / RWY	Type / Old No.	Use / New RWY/Note
BWY	ILS	LOC
CNL	ILS	LOC
LIT	ILS	LOC
LIT	ASR-11	ASR
LIT	NDB/C	NDB

IF you have any questions please notify: patrick.j.mulqueen@faa.gov

(405) 954-4576

Processed Tuesday, September 26, 2017