

Flight Procedure Tracking Form		Action: FLIGHT CHECK	Task Type: IAP	Date Open: 05/04/2017	Task #: 2017050428235101005	Request #: 20170504282351
Procedure: RNAV (GPS) RWY 23 AMDT 1C			Airport ID: KTRI	Airport: TRI-CITIES		Reimbursable #: NO
City: BRISTOL/JOHNSON/KI NGSPORT	ST: TN	GPS #:	Estimated Chart Date: 10/12/2017		FICO #:	
Fac ID: N/A		Fac. Type:			Specialist: IVAN BLANCO	
Procedure Review						
	Rec'd	Rel'd	Full Name	Comments		
Lead:	05/04/2017			Digitally signed by		
QA:				JON DENTON		
Liaison:				Aug 11, 2017		
Procedure Comments: ENROUTE-NON Remark Type: INFORMATION REQUEST FC TABLE TOP. KTRI: OLD 5W/1990 - NEW 7W/2020 PENDING DATA USED FOR KTRI. CONTACT JACOB POWERS: 405.954.8702 TEAM 3 MANAGER: PAT MULQUEEN: 405.954.4073						

VN8200-6 (05/26/2005)

Data as of: 06/26/2017 08:10:36 AM

FIG

FIG

BRISTOL-JOHNSON-KINGSPORT, TENNESSEE

WAAS CH 77626 W23A	APP CRS 230°	Rwy Idg TDZE Apt Elev	8000 1518 1519
--	------------------------	-----------------------------	---

RNAV (GPS) RWY 23

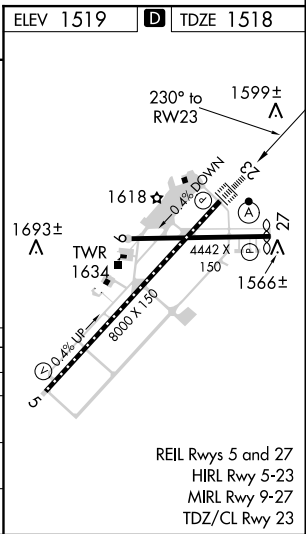
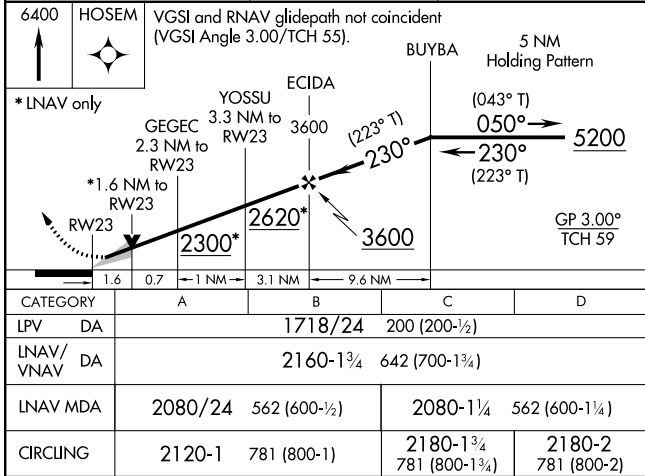
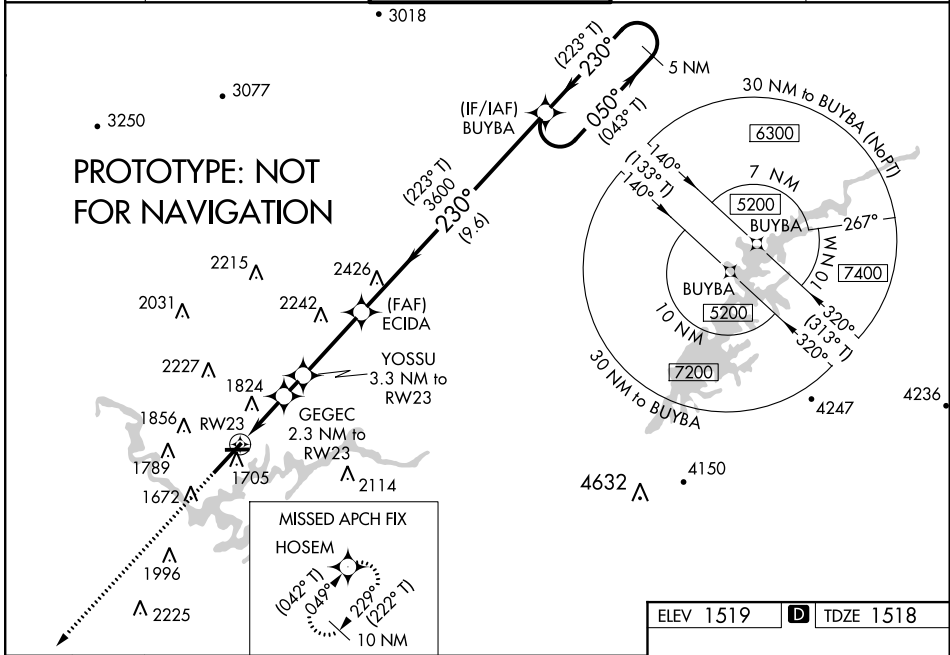
TRI-CITIES (TRI)

⚠ For uncompensated Baro-VNAV systems, LNAV/VNAV NA below -13°C (9°F) or above 34°C (93°F). When local altimeter setting not received, use Elizabethton altimeter setting and increase all DA 41 feet and all MDA 60 feet; increase LNAV/VNAV all Cats and LNAV Cat C-D visibility ½ mile. VDP and Baro-VNAV NA when using Elizabethton altimeter setting. **CIRCLING NA NW OF RWY 9-23.**
DME/DME RNP-0.3 NA.

ALSIF-2
(A)

MISSED APPROACH:
Climb to 6400 direct HOSEM and hold, continue climb-in-hold to 6400.

ATIS 118.25	TRI-CITY APP CON ★ 134.425 349.0	TRI-CITY TOWER ★ 119.5 (CTAF) 257.8	GND CON 121.7 348.6	UNICOM 122.95
-----------------------	--	---	-------------------------------	-------------------------



BRISTOL-JOHNSON-KINGSPORT, TENNESSEE

Amnd 1C FIG

FIG

TRI-CITIES (TRI)

RNAV (GPS) RWY 23

WAAS CH 77626 W23A	APP CRS 228°	Rwy Idg TDZE 1518 Apt Elev 1519
--	------------------------	---

RNAV (GPS) RWY 23

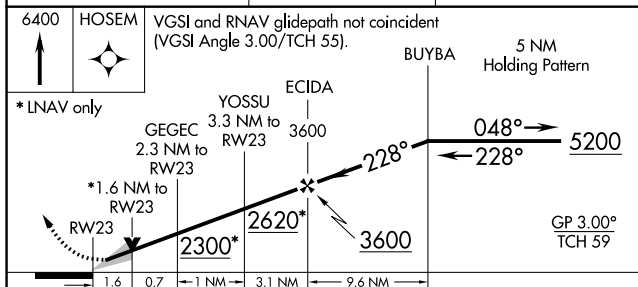
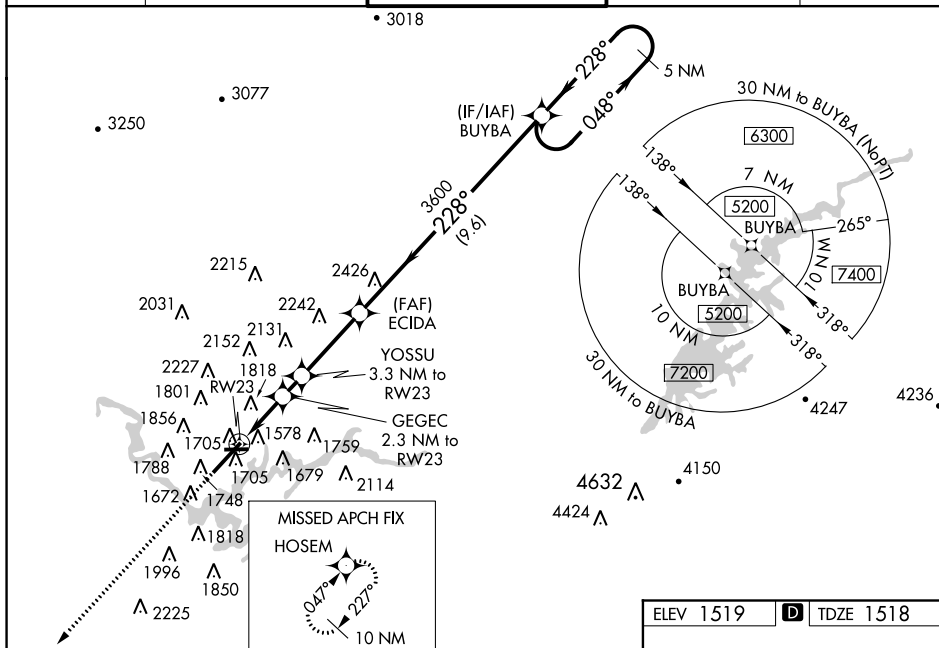
TRI-CITIES RGNL TN/VA (TRI)

⚠ Night Landing: Rwy 9, 27 NA at night. For uncompensated Baro-VNAV systems, LNAV/VNAV NA below -13°C (9°F) or above 34°C (93°F). Circling NA NW of Rwy 9-23.
⚠ DME/DME RNP-0.3 NA. When local altimeter setting not received, use Elizabethton altimeter setting and increase all DA 41 feet and all MDA 60 feet; increase LNAV/VNAV all Cats and LNAV Cat C-D visibility ½ mile. VDP and Baro-VNAV NA when using Elizabethton altimeter setting.

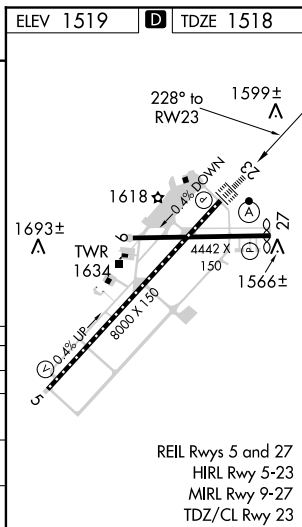


MISSED APPROACH:
Climb to 6400 direct HOSEM and hold, continue climb-in-hold to 6400.

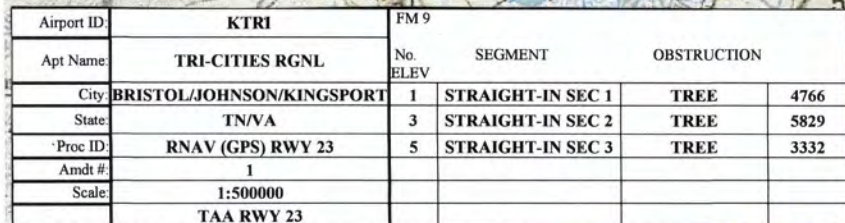
ATIS 118.25	TRI-CITY APP CON ★ 134.425 349.0	TRI-CITY TOWER ★ 119.5 (CTAF) 257.8	GND CON 121.7 348.6	UNICOM 122.95
-----------------------	--	---	-------------------------------	-------------------------



CATEGORY	A	B	C	D
LPV DA		1718/24	200 (200-½)	
LNAV/VNAV DA		2160-1¾	642 (700-1¾)	
LNAV MDA	2080/24	562 (600-½)	2080-1¼	562 (600-1¼)
CIRCLING	2120-1	601 (700-1)	2180-1¾	2180-2
			661 (700-1¾)	661 (700-2)

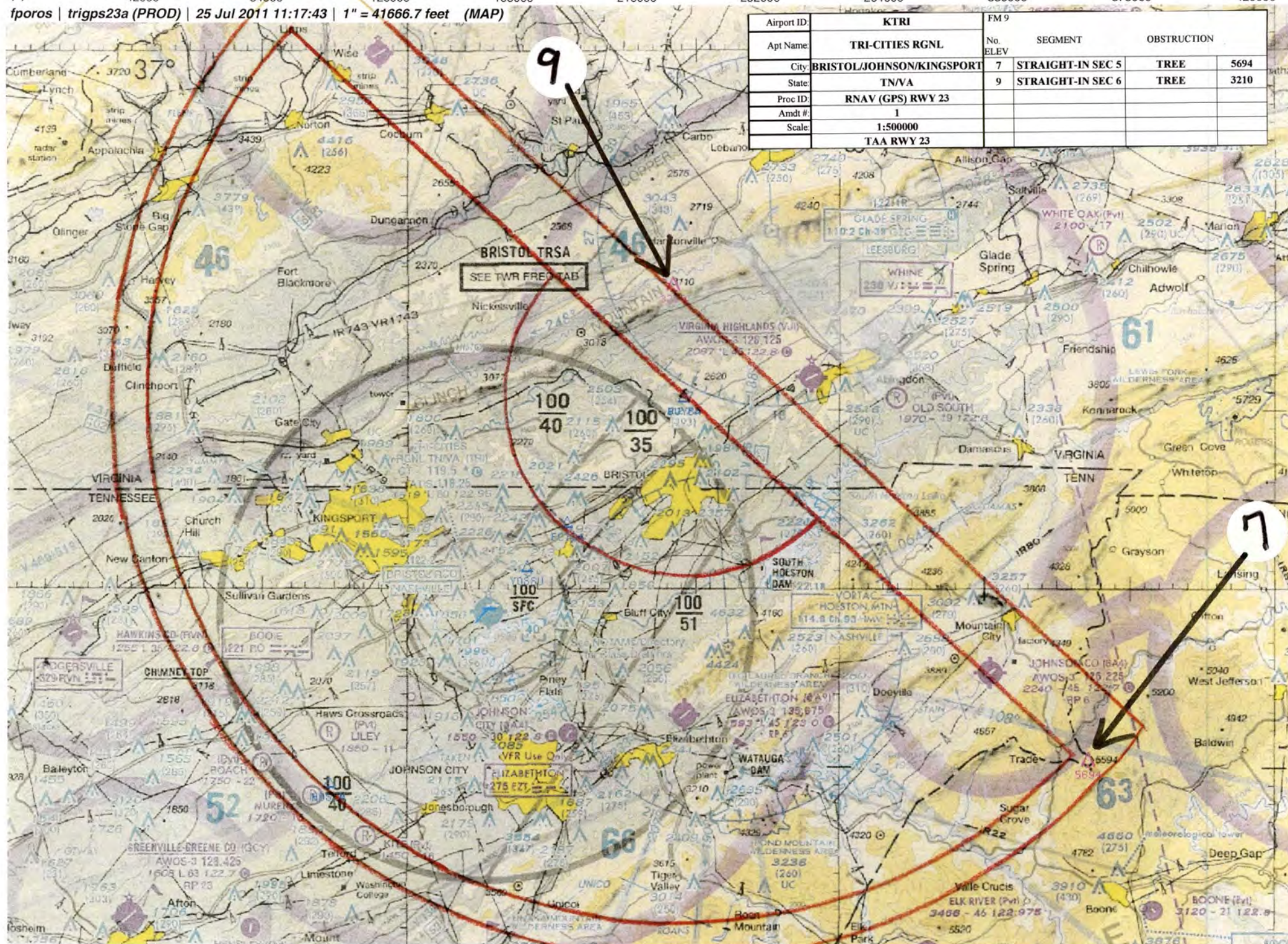


fporos | trigps23a (PROD) | 25 Jul 2011 11:18:20 | 1" = 41666.7 feet (MAP)

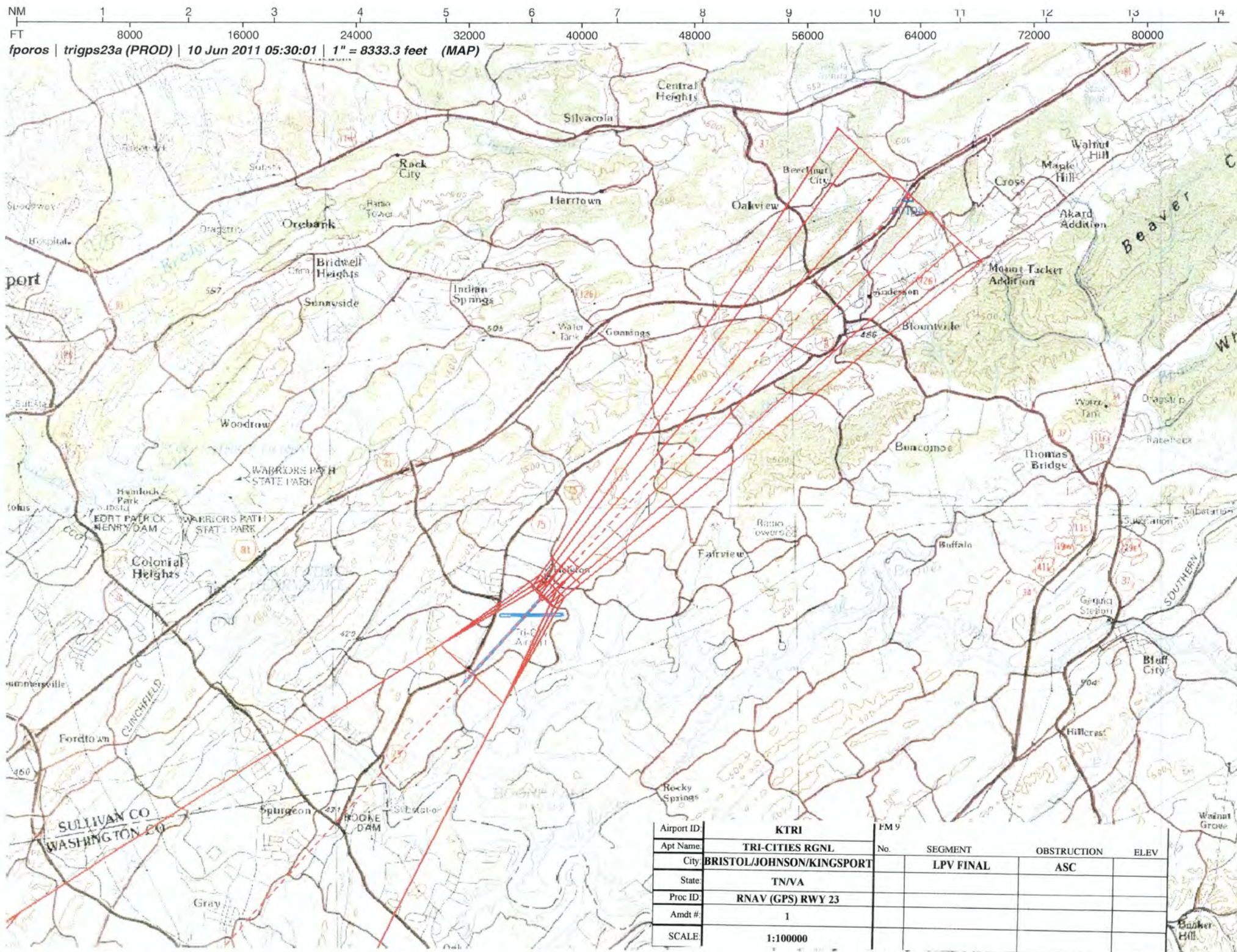


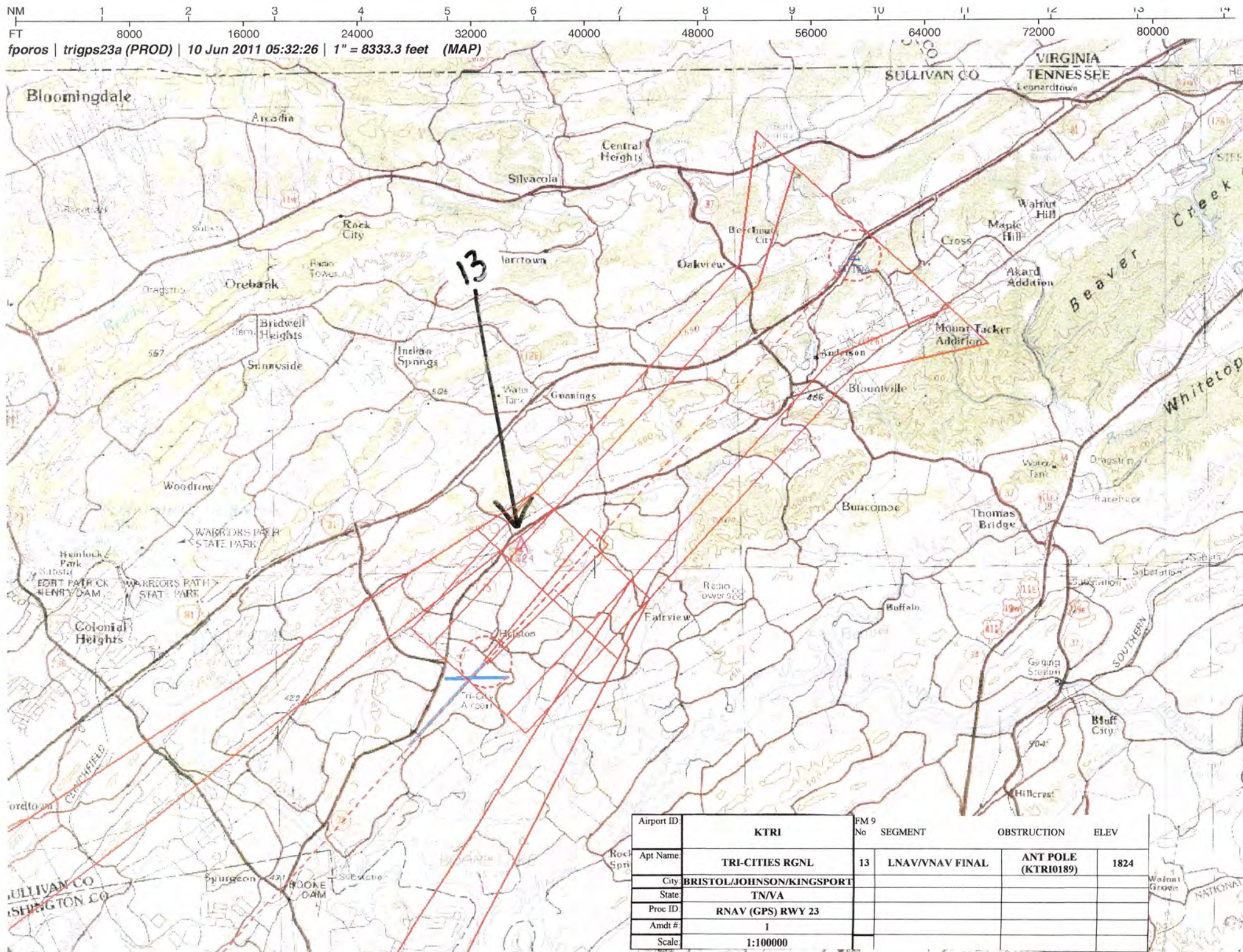
fporos | trigps23a (PROD) | 25 Jul 2011 11:17:43 | 1" = 41666.7 feet (MAP)

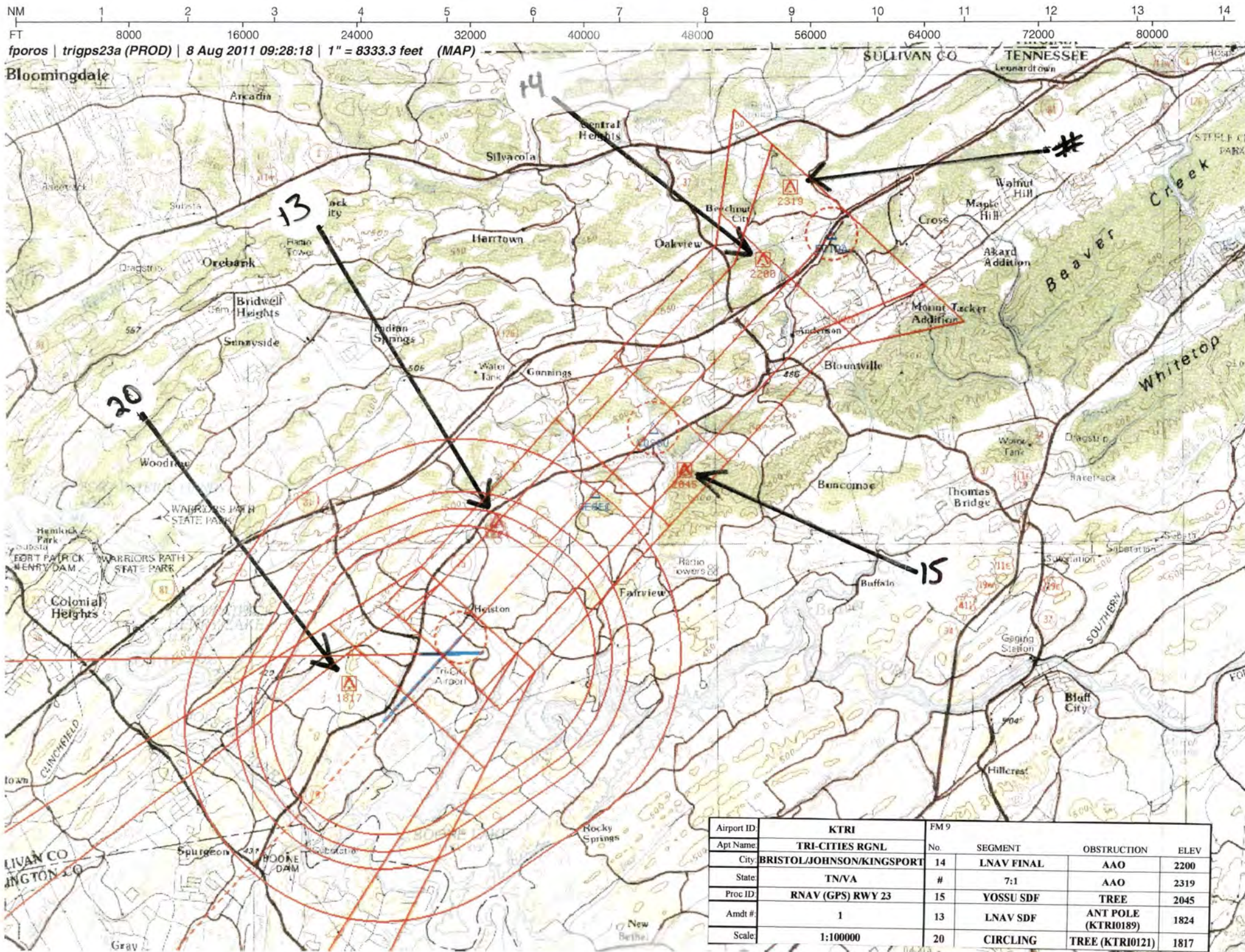
Airport ID	KTRI	FM 9			
Apt Name	TRI-CITIES RGNL	No. ELEV	SEGMENT	OBSTRUCTION	
City	BRISTOL/JOHNSON/KINGSPORT	7	STRAIGHT-IN SEC 5	TREE	5694
State	TN/VA	9	STRAIGHT-IN SEC 6	TREE	3210
Proc ID	RNAV (GPS) RWY 23				
Amdt #	1				
Scale	1:500000				
	TAA RWY 23				



Airport ID:	KTRI	FM 9			
Apt Name	TRI-CITIES RGJN	No.	SEGMENT	OBSTRUCTION	ELEV
City	BRISTOL/JOHNSON/KINGSPORT	15	HOLD-IN-LIEU	AAO	4039
State	TN/VA	7	INTERMEDIATE	AAO	2820
Proc ID	RNAV (GPS) RWY 23	18	MISSED APPROACH	AAO	2299
Armdt #	1	@	MISSED HOLDING	AAO	2299
Scale	1:500000				







TERMINAL AIRSPACE DATA REQUIREMENTS

CITY: **BRISTOL-JOHNSON-KINGSPORT**

STATE: **TN/VA**

AIRPORT NAME: **BRISTOL/TRI-CITIES RGNL**

ID: **KTRI**

PROCEDURE: **RNAV (GPS) RWY 23**

AMDT: **1**

DOCKET#: **NOT REQUIRED**

(96-AXX-X/Required/Not Required)

ALL DIST TO 1/100 NM; ELEV TO NEAREST FT; COORD TO 1/100 SEC; DEG TO 1/100 DG.

- | | | | |
|---|---------------------------------|--------------------------------|---------------|
| 1. Distance from | <u>THLD</u> | to 1000' point | <u>4.78</u> |
| <small>(Enter THLD, FAF, ARP, FACILITY, as appropriate)</small> | | | |
| 2. Width of | <u>FINAL</u> | segment at 1000' point | <u>1.20</u> |
| <small>(Enter appropriate segment, final, intermediate, etc.)</small> | | | |
| 3. True Course of | <u>FINAL</u> | segment containing 1000' point | <u>222.62</u> |
| 4. High Terrain in | <u>FINAL</u> | segment containing 1000' point | <u>2100</u> |
| 5. Distance from | <u>THLD</u> | to 1500' point | <u>13.57</u> |
| <small>(If 1500' point in PT maneuvering area or holding pattern note in remarks)</small> | | | |
| 6. Width of | <u>INTERMEDIATE</u> | segment at 1500' point | <u>4.00</u> |
| 7. True Course of | <u>INTERMEDIATE</u> | segment containing 1500' point | <u>227.70</u> |
| 8. High Terrain in | <u>INTERMEDIATE</u> | segment containing 1500' point | <u>2520</u> |
| 9. Threshold Coordinates (if straight-in) ... | <u>362853.49N / 0822402.56W</u> | | |
| 10. ARP Coordinates | <u>362830.80N / 0822426.70W</u> | | |
| 11. Runway Approach End and distance furthest from ARP | RWY | <u>5</u> | |
| | Distance | <u>0.82</u> | NM |
| 12. FAF Coordinates | <u>363334.51N / 0821842.45W</u> | | |

REMARKS: Approach/Drawing attached.

TAA: (IAF) N-W; (IAF) N-W

BUYBA (IF/IAF) 364039.36N-0821036.74W RADIUS: 30 NM