

Flight Procedure Tracking Form		Action: FLIGHT CHECK	Task Type: IAP	Date Open: 04/19/2017	Task #: 2017041931843201002	Request #: 20170419318432
Procedure: RNAV (GPS) RWY 23 AMDT 1			Airport ID: KHOP	Airport: CAMPBELL AAF (FORT CAMPBELL)		Reimbursable #: NO
City: FORT CAMPBELL/HOPKINSVILLE	ST: KY	GPS #:	Estimated Chart Date: 12/7/2017			FICO #:
Fac ID: N/A		Fac. Type:		Specialist: RAKE MCGRAW		
Procedure Review						
	Rec'd	Rel'd	Full Name	Comments		
Lead:				<div style="color: green; font-weight: bold; transform: rotate(45deg); display: inline-block;">QUALITY</div> <div style="color: green; font-weight: bold; transform: rotate(-45deg); display: inline-block;">10</div> <div style="color: green; font-weight: bold; transform: rotate(45deg); display: inline-block;">CHECKED</div>		
QA:						
Liaison:						
Procedure Comments:			ENROUTE-NON	Remark Type: INFORMATION		
CONTACT: ADOLFO URRUTIA (LEAD)/GEORGE DAVIS (MANAGER) 405 954 2079/9960.						ARI SAVED 8/16/17

FIPC BASIC FORM						
PROCEDURE: RNAV (GPS) RWY 23 1			AIRPORT NAME: CAMPBELL AAF (FORT CAMPBELL)		AIRPORT ID: KHOP	SPECIAL CONTROL NO: AG-08-261-17
FAC ID: KHOP23.01		CITY: FORT CAMPBELL/HOPKINSVILLE			ST: KY	ORIG CHART DATE: 12/07/2017
DFL TYPE: PROC/S	THIRD PARTY: <input type="checkbox"/> YES	EST. TIME ON SITE: 0.4	REIMB. NUMBER: AC0721	PTS TASK ID: 2017041931843201002		
PREFLIGHT NOTES						
REVIEWER:					DATE:	
COMMENTS:					CHECK ONE: <input type="checkbox"/> FLT CK REQ <input type="checkbox"/> NFCR <input type="checkbox"/> REJECT	
					YES	NO
					CPV COMPLETE? <input checked="" type="checkbox"/> X <input type="checkbox"/>	
PROCEDURE RESULTS						
INSPECTION DATE: 09/21/2017	CREW #: VN335	N #: N80	INSTRUMENT PROCEDURE STATUS: <input checked="" type="checkbox"/> SAT <input type="checkbox"/> SAT W/CHANGES <input type="checkbox"/> UNSAT		ARINC CODING: <input type="checkbox"/> SAT <input checked="" type="checkbox"/> SAT/GOLD <input type="checkbox"/> UNSAT	
FLIGHT INSPECTOR SIGNATURE: blake searles @ 10/27/2017 16:41			PRINTED NAME: SEARLES, GEORGE EDWARD			NOTAM INITIATED? <input type="checkbox"/> YES <input checked="" type="checkbox"/> NO
FLIGHT INSPECTOR REMARKS: CAMPBELL AAF (FORT CAMPBELL, FORT CAMPBELL/HOPKINSVILLE, KY, RNAV GPS RWY 23 AMDT 1, SAT w/ comment. The approach lights are a non standard. They are a mixture of ALSF-1, (Wing bars or pre-threshold bars, each containing 5 red lights) a SSALR except normally a 3000 ft system with the RAIL (flashers) that are not normally mixed with the five light stanchions. Recommend that a note is added in the AFD stating that this is a non standard ALS.						
IN-FLIGHT OBSTACLE REPORT						
OBSTRUCTION ID #:	COORDINATES OR LOCATION:	GNSS ALTITUDE (MSL):	BAROMETRIC ALTITUDE (MSL):	HEIGHT ABOVE GROUND LEVEL:		

FIPC BASIC FORM								
PROCEDURE: RNAV (GPS) RWY 23 1			AIRPORT NAME: CAMPBELL AAF (FORT CAMPBELL)		AIRPORT ID: KHOP	SPECIAL CONTROL NO: AG-08-261-17		
FAC ID: KHOP23.01		CITY: FORT CAMPBELL/HOPKINSVILLE			ST: KY	ORIG CHART DATE: 12/07/2017		
DFL TYPE: PROC/S	THIRD PARTY: <input type="checkbox"/> YES	EST. TIME ON SITE: 0.4	REIMB. NUMBER: AC0721		PTS TASK ID: 2017041931843201002			
PREFLIGHT NOTES								
REVIEWER:					DATE:			
COMMENTS:					CHECK ONE: <input type="checkbox"/> FLT CK REQ <input type="checkbox"/> NFCR <input type="checkbox"/> REJECT			
							YES	NO
					CPV COMPLETE?		X	
PROCEDURE RESULTS								
INSPECTION DATE: 09/21/2017		CREW #: VN335	N #: N80	INSTRUMENT PROCEDURE STATUS: <input type="checkbox"/> SAT <input checked="" type="checkbox"/> SAT W/CHANGES <input type="checkbox"/> UNSAT		ARINC CODING: <input type="checkbox"/> SAT <input checked="" type="checkbox"/> SAT/GOLD <input type="checkbox"/> UNSAT		
FLIGHT INSPECTOR SIGNATURE: blake searles @ 09/22/2017 15:34			PRINTED NAME: SEARLES, GEORGE EDWARD				NOTAM INITIATED? <input type="checkbox"/> YES <input checked="" type="checkbox"/> NO	
FLIGHT INSPECTOR REMARKS: CAMPBELL AAF (FORT CAMPBELL, FORT CAMPBELL/HOPKINSVILLE, KY, RNAV GPS RWY 23 AMDT 1, SAT w/ Changes due to the approach lights are not SSALR. They are SALSF. Recommend procedures review approach mins criteria.								
IN-FLIGHT OBSTACLE REPORT								
OBSTRUCTION ID #:	COORDINATES OR LOCATION:		GNSS ALTITUDE (MSL):		BAROMETRIC ALTITUDE (MSL):		HEIGHT ABOVE GROUND LEVEL:	

WAAS CH 56203 W23A	APP CRS 225°	Rwy Idg 11822 TDZE 571 Apt Elev 571
--	------------------------	--

RNAV (GPS) RWY 23

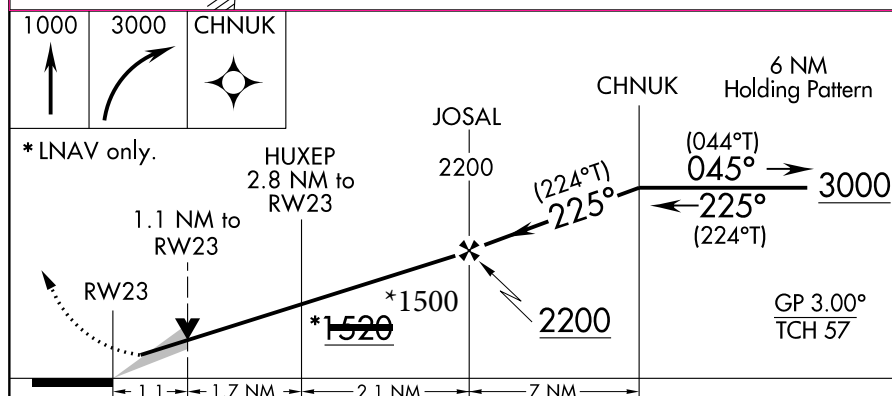
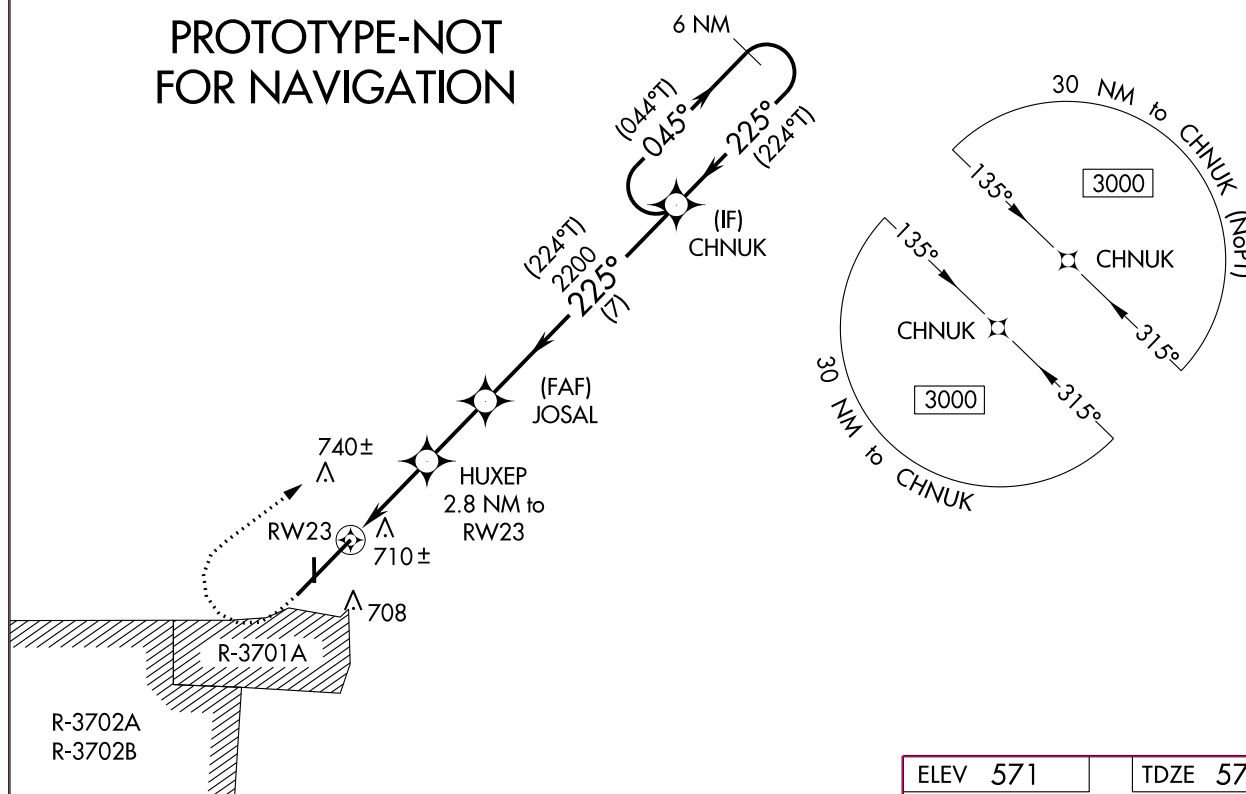
CAMPBELL AAF (FORT CAMPBELL) (HOP)

ASR/PAR Circling to Rwy 18-36 NA at night. For uncompensated Baro-VNAV systems, LNAV-VNAV NA below -19°C (-2°F) or above 54°C (130°F). Circling NA southeast of Rwy 05-23. DME/DME RNP-0.3 NA. For inop ALS increase LPV Cat E visibility to RVR 4000, increase LNAV/VNAV Cat E visibility to RVR 5000, increase LNAV Cat E visibility to RVR 6000.

MISSED APPROACH: Climb to 1000 then climbing right turn to 3000 direct CHNUK and hold.

ATIS 125.175 308.4	CAMPBELL APP CON 118.1 269.525	CAMPBELL TOWER 120.9 278.8	GND CON 121.8 266.8	CLNC DEL 138.8
------------------------------	--	--------------------------------------	-------------------------------	--------------------------

PROTOTYPE-NOT
FOR NAVIGATION



1000	3000	CHNUK
↑	↗	✧
* LNAV only.	HUXEP 2.8 NM to RW23	JOSAL 2200
1.1 NM to RW23	*1520	*1500
1.1	1.7 NM	2.1 NM
7 NM	CHNUK	6 NM Holding Pattern
(224°T)	(044°T)	045°
225°	225°	3000
(224°T)	(224°T)	GP 3.00° TCH 57
CATEGORY	A	B
LPV DA	771/24	200 (200-½)
LNAV/VNAV DA	891/24	320 (400-½)
LNAV MDA	960/24	389 (400-½)
CIRCLING	1060-1	489 (500-1)
	1060-1½	489 (500-1½)
	1140-2	569 (600-2)

ELEV 571 TDZE 571

225° to
RW23

CURRENT

RNAV (GPS) RWY 23

WAAS Chan 56203 W23A	APCH CRS 225°	Rwy Idg 11,822 TDZE 572 Arpt Elev 572
--	-------------------------	--

AL-679 [USA]

CAMPBELL AAF (KHOP)

T * When ALS inop, increase CAT DE RVR to 60 and vis to 1¼ miles.
 ** When ALS inop, increase RVR to 60 and vis to 1¼ miles.
 *** Circling NA SE of Rwy 5-23.

SALS

(A₂)


MISSED APPROACH: Climb to 3000 direct JANEL and right turn via 324° track to HALUX and right turn via 065° track to GNSHP and hold.

ATIS	CAMPBELL APP CON	CAMPBELL TOWER	GND CON	CLNC DEL	ASR/PAR
125.175 308.4	118.1 269.525	120.9 278.8	121.8 266.8	138.8	

DME/DME RNP-0.3 NA.

For uncompensated BARO-VNAV systems, LNAV/VNAV NA below -16°C (4°F) or above 47°C (116°F).

CENTRAL CITY
109.8 CCT ≡::≡::
Chap 35

BOWLING GREEN
17.9 BWG 
Chgn 126

(IAF)
ROTRR

Procedure NA for arrivals at GNSHP via V7 northbound.

Procedure NA for
arrivals at BWG
VORTAC via
V94 northeast bound.

Procedure NA for
arrivals at BNA
VORTAC via
V140 eastbound.

NASHVILLE
114.1 BNA
Chgn 88

ELEV 572

TDZE 572

3000 ↑	JANEL ✦	tr 324°
-----------	------------	------------

† LNAV ONLY

† LNAV ONLY

† 1.0 NM to RW23

RW23

HOOAH

225°

3000

2200

GS 3.00°
TCH 55

CATEGORY	A	B	C	D	E
LPV DA	822/40		250	(300-¾)	
INAV/ DA ** VNAV	922/50		350	(400-1)	
INAV MDA*	940/40		368 (400-¾)	940/50 368 (400-1)	
CIRCLING**	1020-1 448 (500-1)	1040-1 468 (500-1)	1040-1½ 468 (500-1½)	1140-2 568 (600-2)	

Rwy 5 Idg 10,926'

Rwy 36 Idg 4001'

HIRL Rwy 5-23

FORT CAMPBELL, KENTUCKY

36°40'N-87°30'W

CAMPBELL AAF (KHOP)

Orig 15064

RNAV (GPS) RWY 23

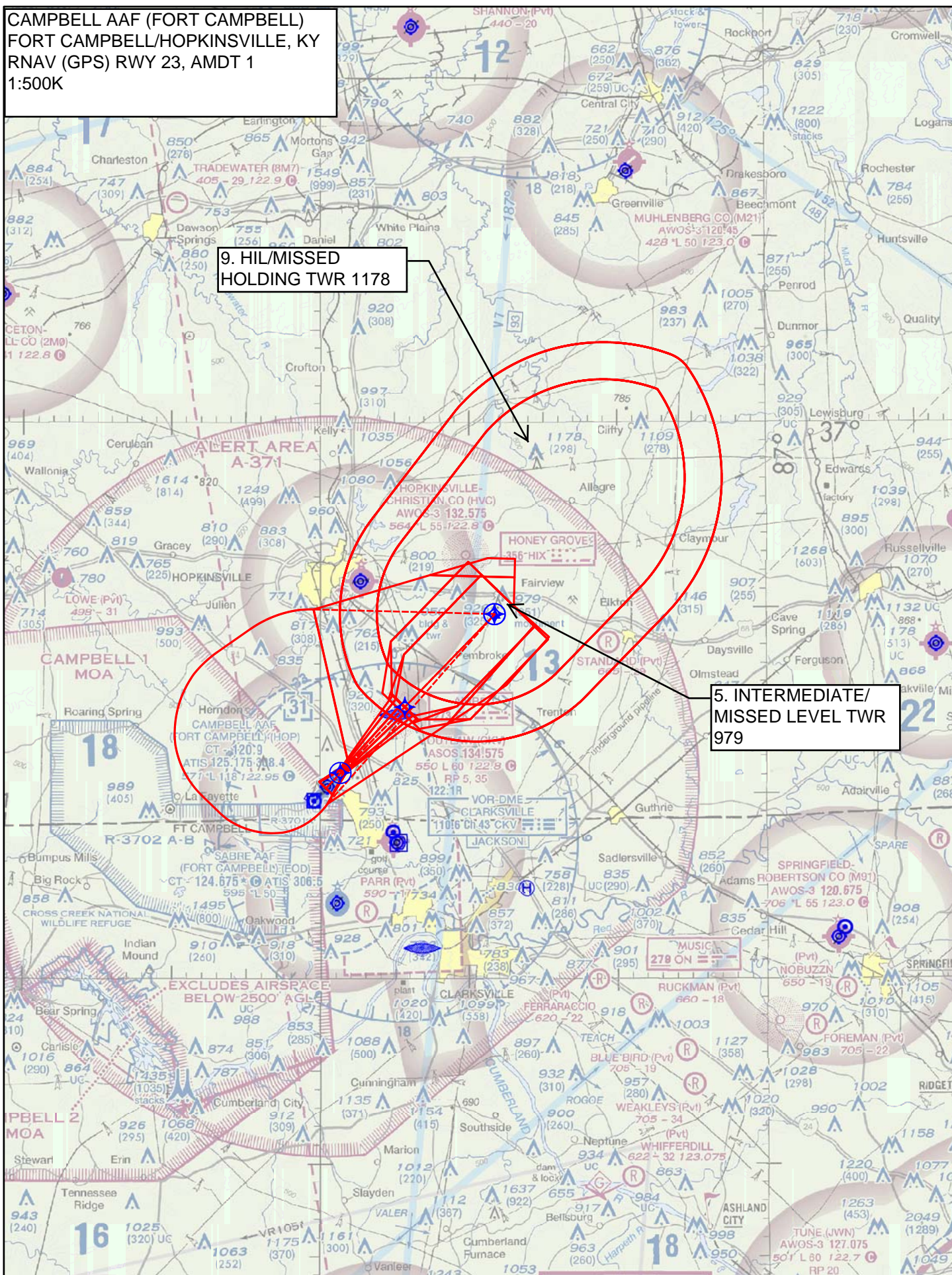
SE-1, 27 APR 2017 to 25 MAY 2017

SE-1, 27 APR 2017 to 25 MAY 2017

CAMPBELL AAF (FORT CAMPBELL)
FORT CAMPBELL/HOPKINSVILLE, KY
RNAV (GPS) RWY 23, AMDT 1
1:500K

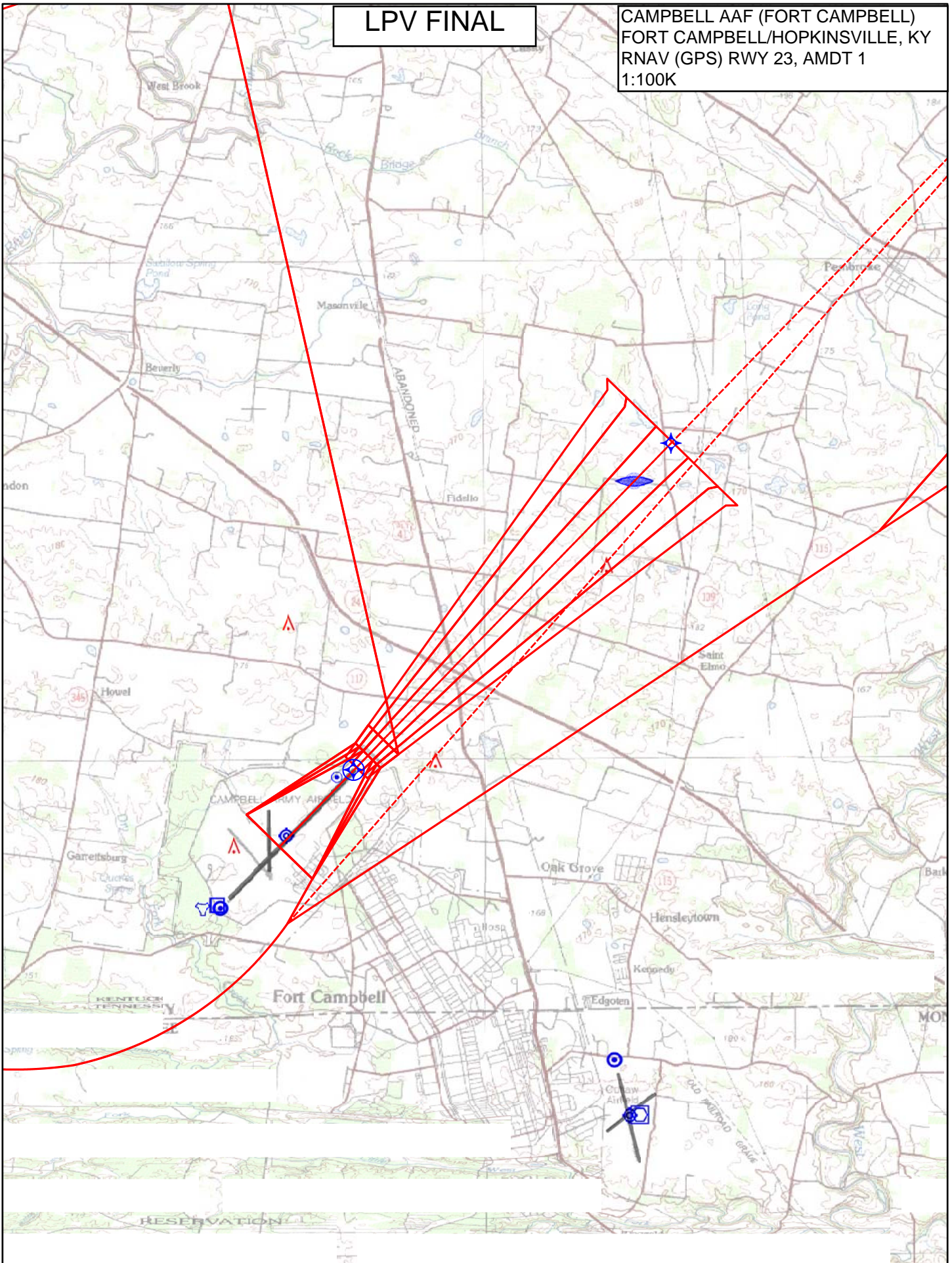
9. HIL/MISSED
HOLDING TWR 1178

5. INTERMEDIATE/
MISSED LEVEL TWR
979



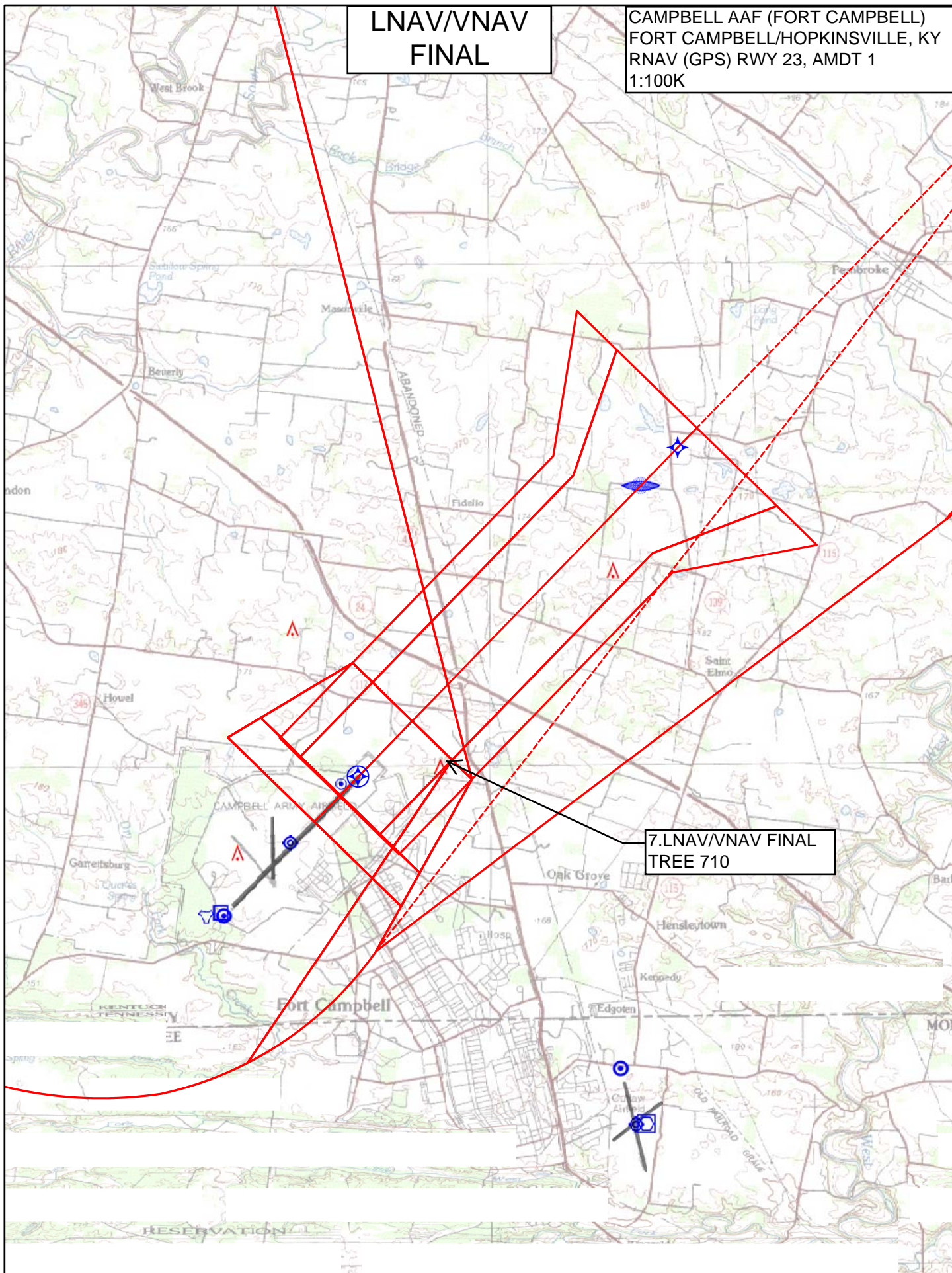
LPV FINAL

CAMPBELL AAF (FORT CAMPBELL)
FORT CAMPBELL/HOPKINSVILLE, KY
RNAV (GPS) RWY 23, AMDT 1
1:100K



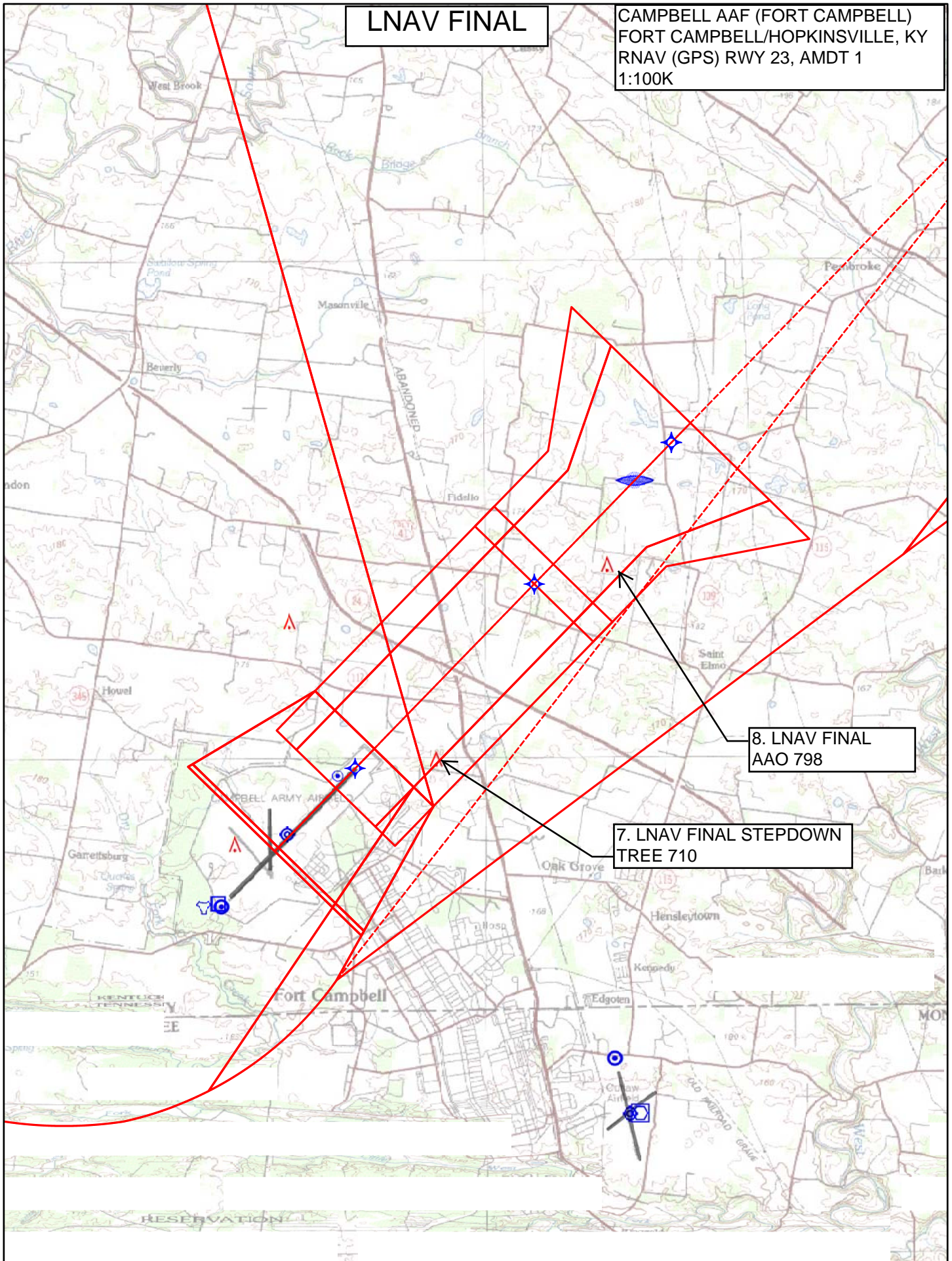
RNAV/VNAV FINAL

CAMPBELL AAF (FORT CAMPBELL)
FORT CAMPBELL/HOPKINSVILLE, KY
RNAV (GPS) RWY 23, AMDT 1
1:100K



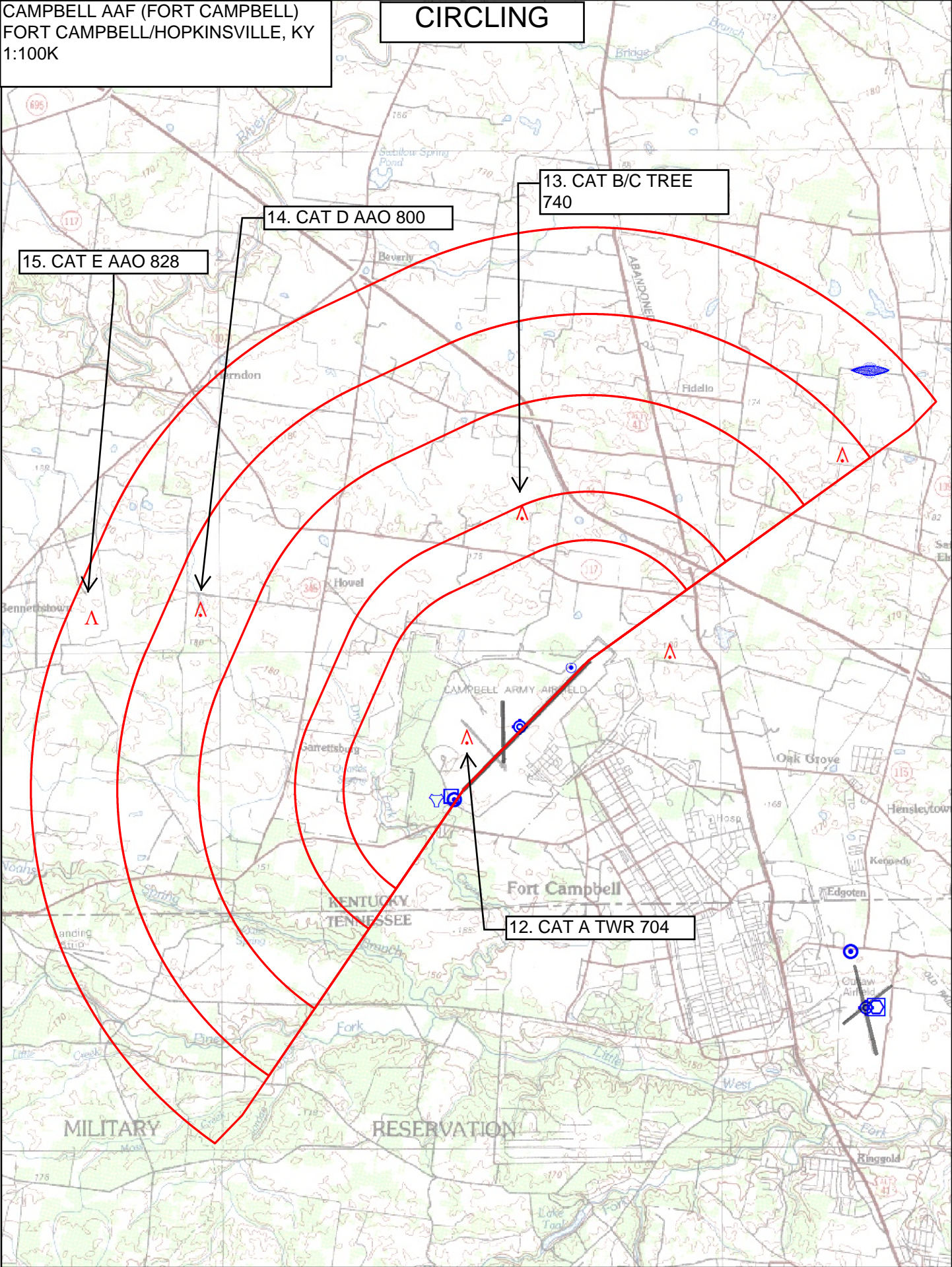
LNAV FINAL

CAMPBELL AAF (FORT CAMPBELL)
FORT CAMPBELL/HOPKINSVILLE, KY
RNAV (GPS) RWY 23, AMDT 1
1:100K



CAMPBELL AAF (FORT CAMPBELL)
FORT CAMPBELL/HOPKINSVILLE, KY
1:100K

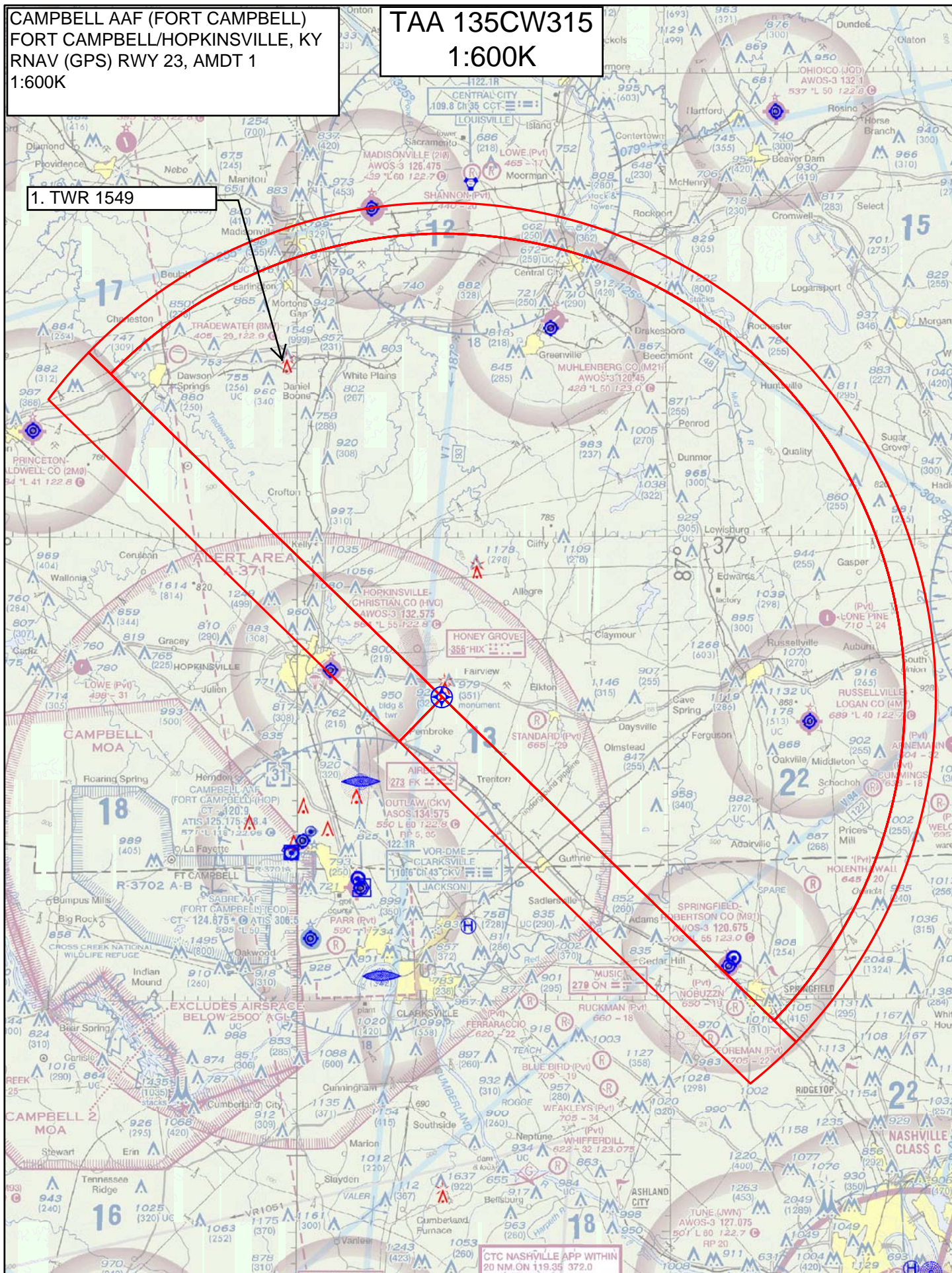
CIRCLING



CAMPBELL AAF (FORT CAMPBELL)
FORT CAMPBELL/HOPKINSVILLE, KY
RNAV (GPS) RWY 23, AMDT 1
1:600K

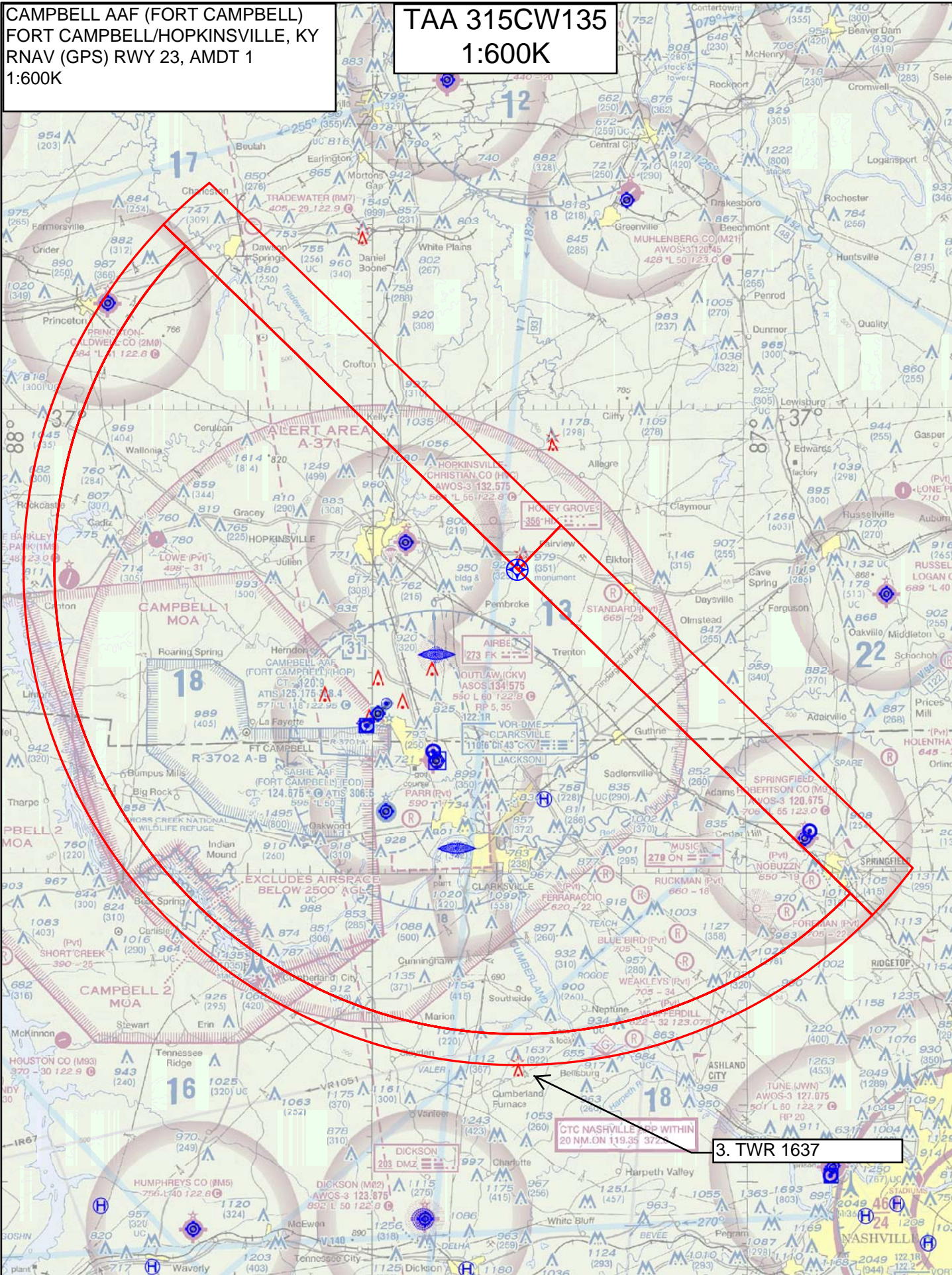
TAA 135CW315
1:600K

1. TWR 1549



CAMPBELL AAF (FORT CAMPBELL)
FORT CAMPBELL/HOPKINSVILLE, KY
RNAV (GPS) RWY 23, AMDT 1
1:600K

TAA 315CW135
1:600K



TERMINAL AIRSPACE DATA REQUIREMENTS

City: FORT CAMPBELL/HOPKINSVILLE Airport Name: CAMPBELL AAF (FORT CAMPBELL) Procedure: RNAV (GPS) RWY 23 Docket #:	State: KY ID: KHOP Amendment: 1
ALL DIST TO 1/100 NM; ELEV TO NEAREST FT; COORD TO 1/100 SEC; DEG TO 1/100 DG.	
1. Distance from 2. Width of 3. True Course of 4. High Terrain in 5. Distance from 6. Width of 7. True Course of 8. High Terrain in 9. Threshold Coordinates (if straight-in) 10. ARP Coordinates 11. Runway Approach End and distance furthest from ARP: Runway 23 Distance 1.03 NM 12. FAF Coordinates	THLD to 1000' point 3.05 FINAL segment at 1000' point 1.20 FINAL segment containing 1000' point 224.25 FINAL segment containing 1000' point 610 THLD to 1500' point 4.74 FINAL segment at 1500' point 1.95 FINAL segment containing 1500' point 224.25 FINAL segment containing 1500' point 610 36 41 04.28 N / 087 28 37.18 W 36 40 21.28 N / 087 29 32.54 W 36 44 36.85 N / 087 24 20.14 W
Remarks:	