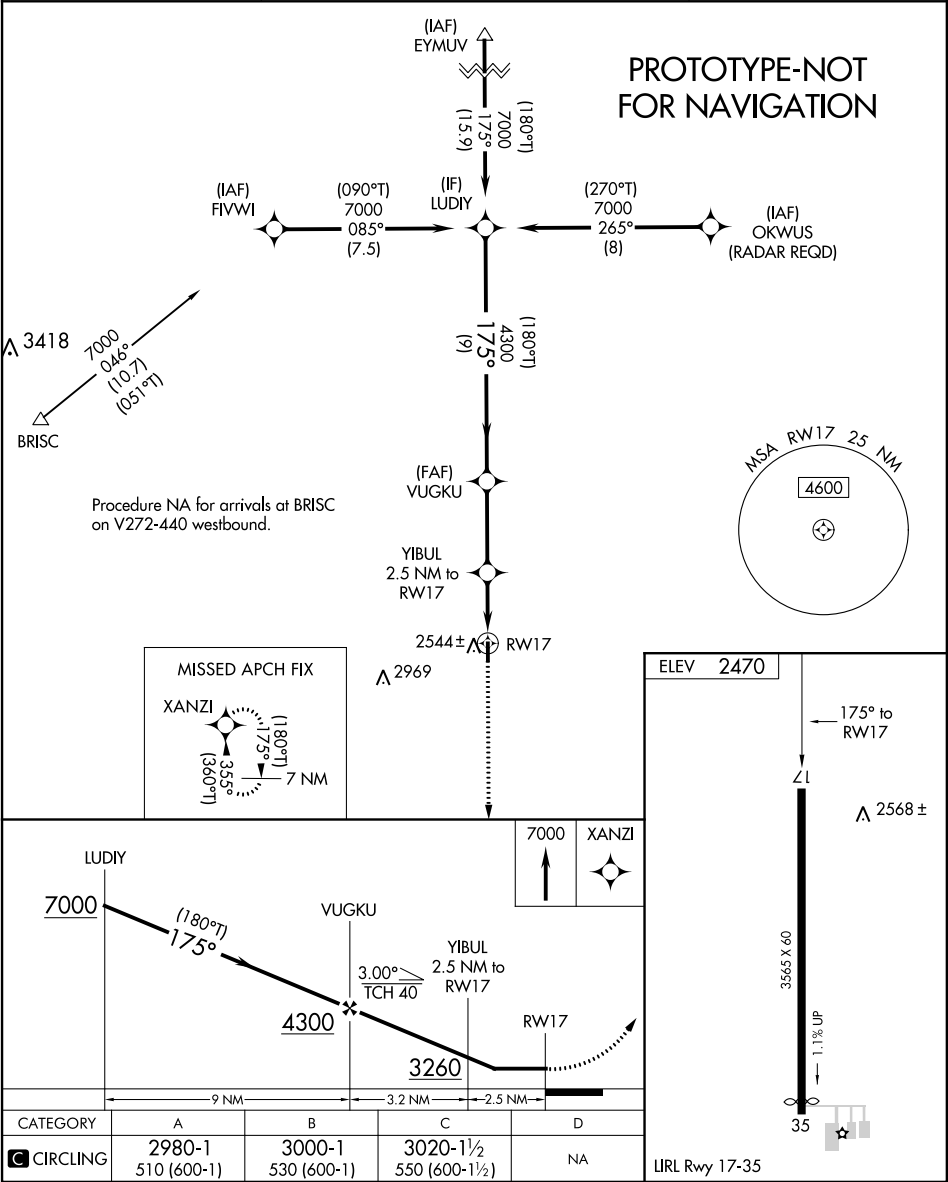


Flight Procedure Tracking Form		Action: FLIGHT CHECK	Task Type: IAP	Date Open: 04/06/2017	Task #: 2017040629241201001	Request #: 20170406292412
Procedure: RNAV (GPS)-A AMDT 1			Airport ID: KT59	Airport: WHEELER MUNI		Reimbursable #: NO
City: WHEELER	ST: TX	GPS #:	Estimated Chart Date: 08/17/2017		FICO #:	
Fac ID: N/A		Fac. Type:			Specialist: DEANNA FIELDS	
Procedure Review						
	Rec'd	Rel'd	Full Name	Comments		
Lead:	04/06/2017					
QA:			Wilson 5/12/2017			
Liaison:						
Procedure Comments:			ENROUTE-NON			
			Remark Type: INFORMATION			
CONTACT: JACOB POWERS, SUB-TEAM MANAGER, IFP TEAM 3, 405.954.8702 (OR) PATRICK MULQUEEN, MANAGER, AJV-543, INSTRUMENT FLIGHT PROCEDURES TEAM 3, 405.954.4073						

APP CRS	Rwy Idg	N/A
175°	TDZE	N/A
	Apt Elev	2470

RNAV (GPS)-A
WHEELER MUNI (T59)

<div><div><div><div></div><div>NA</div></div></div><div>Helicopter visibility reduction below ¾ SM NA. DME/DME RNP-0.3 NA. Use Hemphill County altimeter setting.</div></div>		MISSED APPROACH: Climb to 7000 direct XANZI and hold, continue climb-in-hold to 7000.
HEMPHILL COUNTY AWOS-3 119.025	ALBUQUERQUE CENTER 127.85 285.475	CTAF 122.9



RNAV (GPS)-A
WHEELER MUNI (T59)

APP CRS 175°	Rwy Idg TDZE Apt Elev	N/A N/A 2470
------------------------	-----------------------------	---

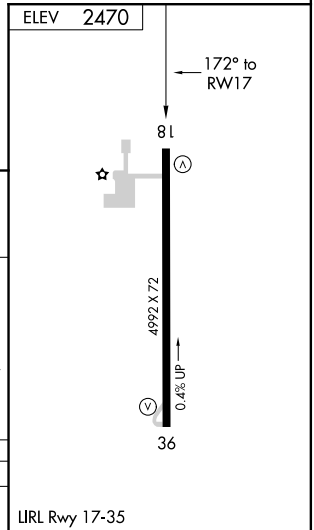
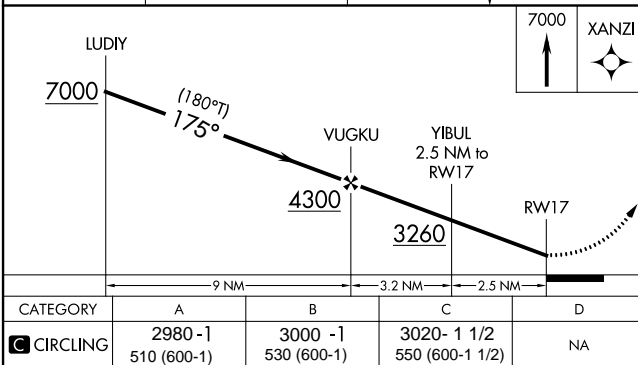
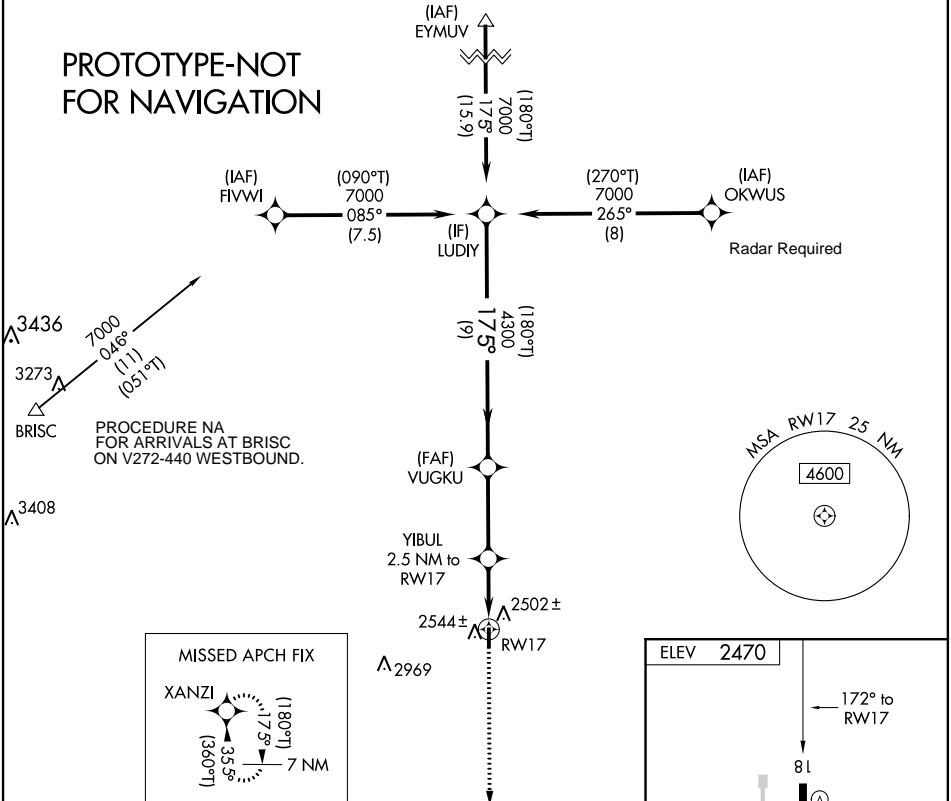
▼ DME/DME RNP-0.3 NA.
▲ NA Helicopter visibility reduction below 3/4 SM NA.
USE HEMPHILL COUNTY ALTIMETER SETTING.

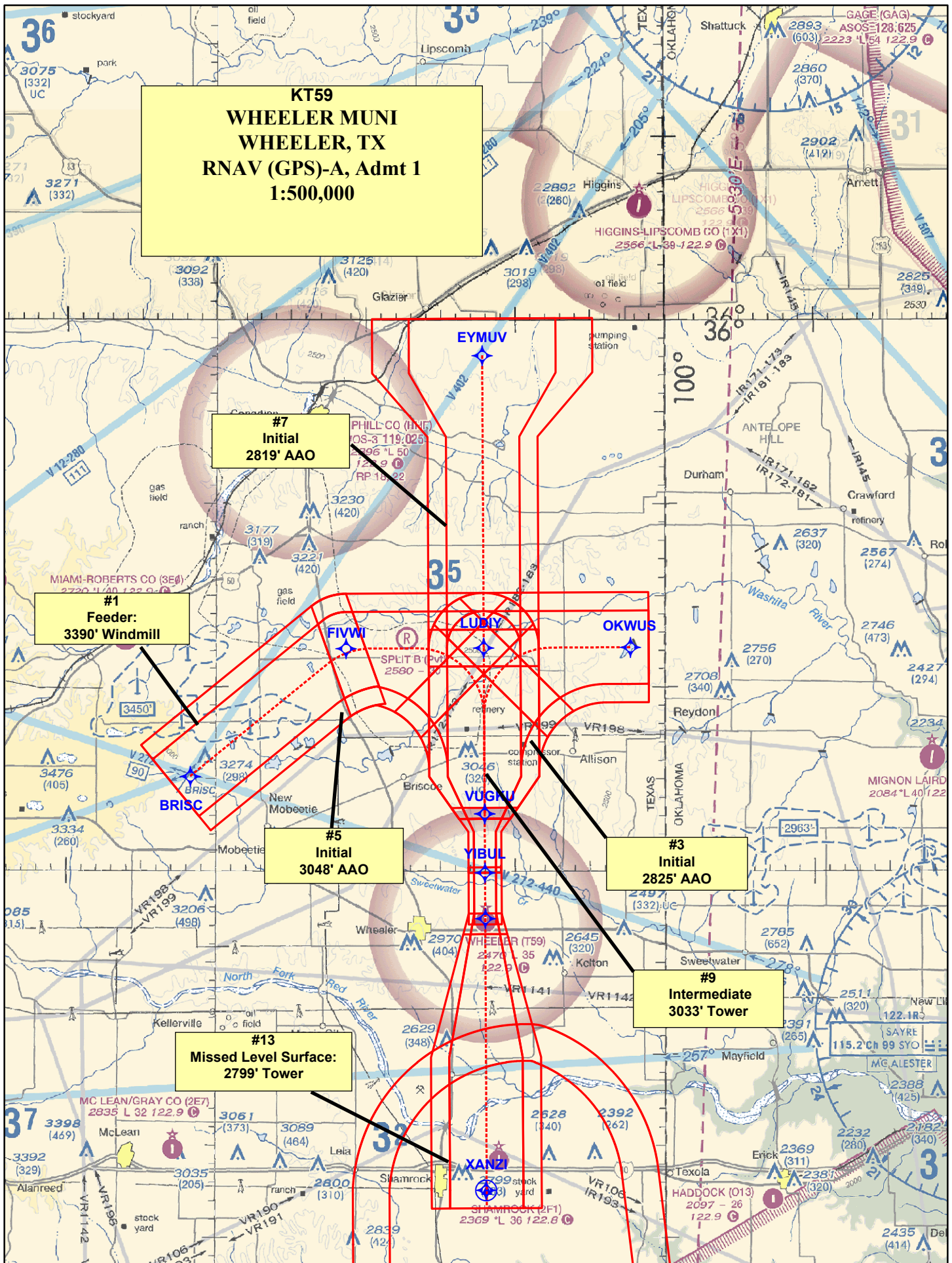
MISSED APPROACH: Climb to 7000 direct XANZI and hold, continue climb-in-hold to 7000.

ALBUQUERQUE CENTER
127.85 285.475

CTAF
122.9

PROTOTYPE-NOT
FOR NAVIGATION





KT59
WHEELER MUNI
WHEELER, TX
RNAV (GPS)-A, Admt 1
1:500,000

#7
Initial
2819' AAO

#1
Feeder:
3390' Windmill

#5
Initial
3048' AAO

#3
Initial
2825' AAO

#9
Intermediate
3033' Tower

#13
Missed Level Surface:
2799' Tower

KT59
WHEELER MUNI
WHEELER, TX
RNAV (GPS)-A, Admt 1
1:500,000

HOLDING:
2799' Tower

#13
Missed Level Surface:
2799' Tower

KT59
WHEELER MUNI
WHEELER, TX
RNAV (GPS)-A, Admt 1
1:500,000

Climb-In-Hold:
2839' Tower

KT59
WHEELER MUNI
WHEELER, TX
RNAV (GPS)-A, Admt 1
1:100,000

#11
LNAV FINAL
2789' AAO

#12
LNAV FINAL STEPDOWN
2544' TREE

#15
CIRCLING CAT A:
2594' TREE

#17
CIRCLING CAT C:
2634' TREE

#16
CIRCLING CAT B:
2624' TREE

Kelton

TERMINAL AIRSPACE DATA REQUIREMENTS

CITY: **WHEELER**

Info Only

STATE: **TX**

AIRPORT NAME: **WHEELER MUNI**

ID: **KT59**

PROCEDURE: **RNAV (GPS)-A**

AMDT: **ORIG**

DOCKET#: **NOT REQUIRED**
(96-AXX-X/Required/Not Required)

ALL DIST TO 1/100 NM; ELEV TO NEAREST FT; COORD TO 1/100 SEC; DEG TO 1/100 DG.

- | | | | |
|---|---------------------------------|--------------------------------|---------------|
| 1. Distance from | <u>THLD</u> | to 1000' point | <u>3.41</u> |
| <small>(Enter THLD, FAF, ARP, FACILITY, as appropriate)</small> | | | |
| 2. Width of | <u>FINAL</u> | segment at 1000' point | <u>1.20</u> |
| <small>(Enter appropriate segment, final, intermediate, etc.)</small> | | | |
| 3. True Course of | <u>FINAL</u> | segment containing 1000' point | <u>179.68</u> |
| 4. High Terrain in | <u>FINAL</u> | segment containing 1000' point | <u>2589</u> |
| 5. Distance from | <u>THLD</u> | to 1500' point | <u>5.34</u> |
| <small>(If 1500' point in PT maneuvering area or holding pattern note in remarks)</small> | | | |
| 6. Width of | <u>FINAL</u> | segment at 1500' point | <u>1.76</u> |
| 7. True Course of | <u>FINAL</u> | segment containing 1500' point | <u>179.68</u> |
| 8. High Terrain in | <u>FINAL</u> | segment containing 1500' point | <u>2589</u> |
| 9. Threshold Coordinates (if straight-in) ... | <u>352721.47N / 1001159.78W</u> | | |
| 10. ARP Coordinates | <u>352703.90N / 1001159.70W</u> | | |
| 11. Runway Approach End and distance furthest from ARP | RWY | <u>35</u> | |
| | Distance | <u>0.29</u> | NM |
| 12. FAF Coordinates | <u>353306.63N / 1001202.14W</u> | | |

REMARKS: Approach/Drawing attached.