



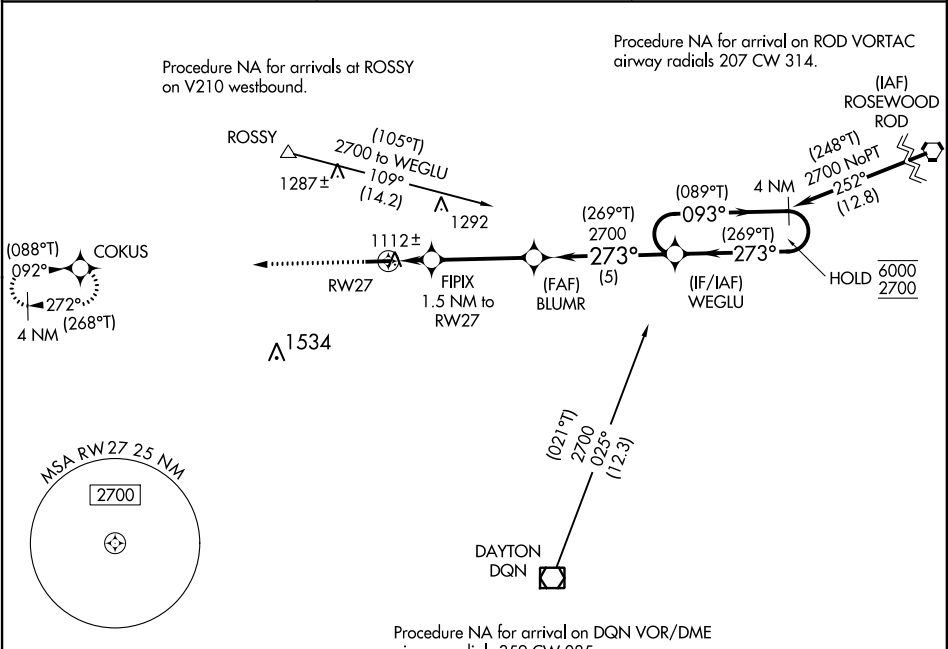
<b>Flight Procedure Tracking Form</b>		<b>Action:</b> FLIGHT CHECK	<b>Task Type:</b> IAP	<b>Date Open:</b> 06/30/2017	<b>Task #:</b> 2017033110560201002	<b>Request #:</b> 20170331105602
<b>Procedure:</b> RNAV (GPS) RWY 27 AMDT 1			<b>Airport ID:</b> KVES	<b>Airport:</b> DARKE COUNTY		<b>Reimbursable #:</b> NO
<b>City:</b> VERSAILLES	<b>ST:</b> OH	<b>GPS #:</b>	<b>Estimated Chart Date:</b> 09/13/2018		<b>FICO #:</b>	
<b>Fac ID:</b> N/A		<b>Fac. Type:</b>			<b>Specialist:</b> JEFFREY ROBINSON	
<b>Procedure Review</b>						
	<b>Rec'd</b>	<b>Rel'd</b>	<b>Full Name</b>	<b>Comments</b>		
<b>Lead:</b>	03/23/2018					
<b>QA:</b>						
<b>Liaison:</b>						
<b>Procedure Comments:</b> ENROUTE-NON <b>Remark Type:</b> INFORMATION  PENDING AIRPORT / RUNWAY DATA USED.  ADD LP MINIMUMS.  CONTACT: DEZ SILAGYI, 405-954-5340.						



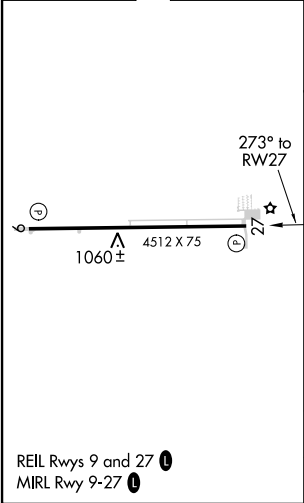
WAAS CH <b>86243</b> <b>W27A</b>	APP CRS <b>273°</b>	Rwy Idg TDZE <b>1007</b> Apt Elev <b>1007</b>
--	------------------------	---

RNAV (GPS) RWY 27  
DARKE COUNTY (VES)

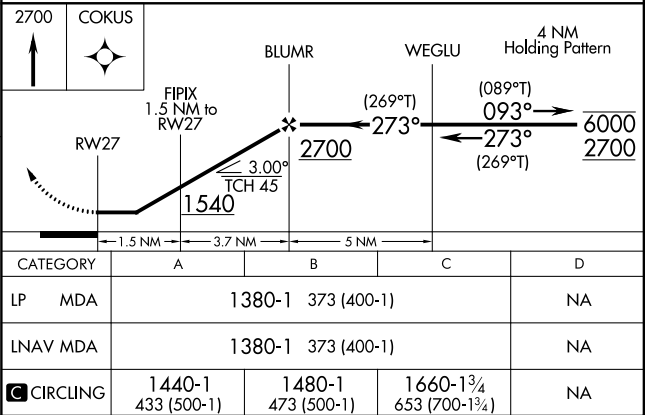
RNP APCH		MISSED APPROACH: Climb to 2700 direct COKUS and hold.
	Rwy 27 helicopter visibility reduction below 1 SM NA. Straight-in Rwy 27 NA at night, Circling Rwy 27 NA at night.	
AWOS-3 <b>125.9</b>	COLUMBUS APP CON <b>118.425 352.05</b>	UNICOM <b>122.8</b> (CTAF) 



ELEV <b>1007</b>	TDZE <b>1007</b>
------------------	------------------



PROTOTYPE-NOT FOR NAVIGATION



OLD

VERSAILLES, OHIO

AL-6038 (FAA)

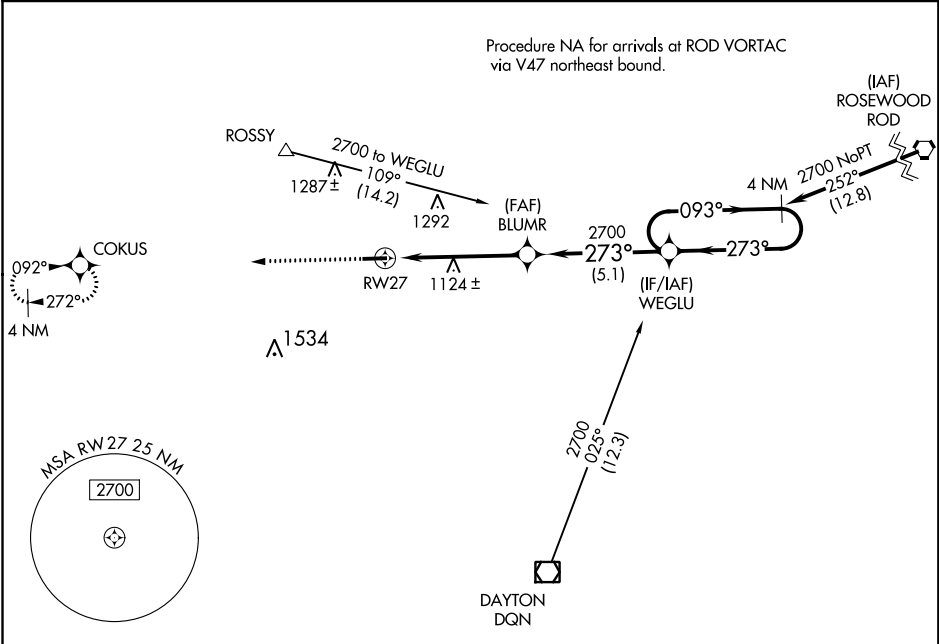
15120

APP CRS	Rwy Idg	4512
273°	TDZE	1007
	Apt Elev	1007

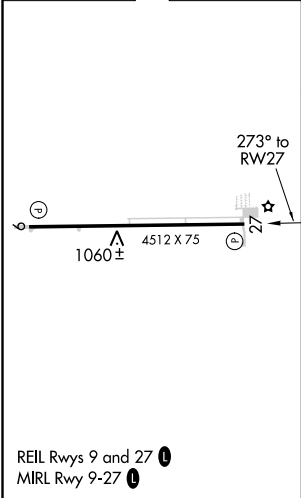
RNAV (GPS) RWY 27  
DARKE COUNTY (VES)

<p>NA</p>	DME/DME RNP-0.3 NA. Visibility reduction by helicopters NA. Obtain local altimeter setting on CTAF; when not received, use James M. Cox Dayton Intl altimeter setting.	MISSED APPROACH: Climb to 2700 direct COKUS and hold.
-----------	--	---

AWOS-3 125.9	COLUMBUS APP CON 118.425 352.05	UNICOM 122.8 (CTAF) 0
-----------------	------------------------------------	--------------------------



ELEV 1007	TDZE 1007
-----------	-----------



2700	COKUS	BLUMR	WEGLU	4 NM Holding Pattern
273° to RW27		273°	093°	2700
1060±	4512 X 75	5.1 NM	5.1 NM	
CATEGORY	A	B	C	D
LNAV MDA	1380-1	373 (400-1)	NA	
CIRCLING	1440-1 433 (500-1)	1460-1 453 (500-1)	NA	
JAMES M. COX DAYTON INTL ALTIMETER SETTING MINIMUMS				
LNAV MDA	1440-1	433 (500-1)	NA	
CIRCLING	1500-1	493 (500-1)	NA	

VERSAILLES, OHIO  
Orig 31JUL08

40°12'N-84°32'W

DARKE COUNTY (VES)  
RNAV (GPS) RWY 27

EC-2: 29 MAR 2018 to 26 APR 2018

EC-2: 29 MAR 2018 to 26 APR 2018



84°0'0"W

RNAV (GPS) RWY 27, AMDT 1  
ALL SEGMENTS  
1:500,000

#1

**COKUS**

ES 45NM 4-10-18 JRobinson  
Transverse Mercator  
Scale 1:500000

MA HOLD  
1483 TWR

#10  
389 TWR

**CAUTION**  
EXTENSIVE MILITARY AIRCRAFT  
LANDING/DEPARTING  
WRIGHT-PATTERSON AFB

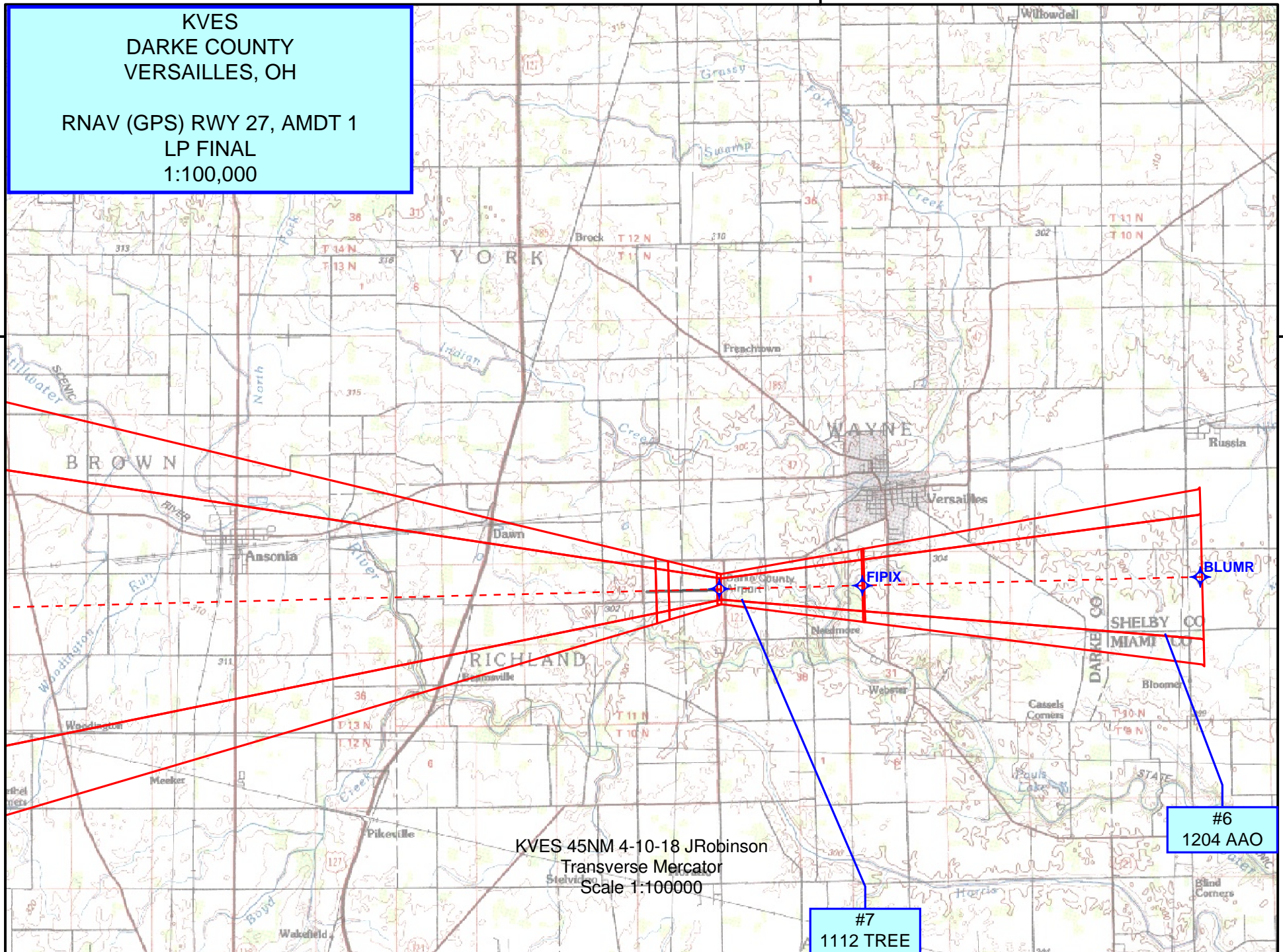


84°30'0"W

KVES  
DARKE COUNTY  
VERSAILLES, OH

RNAV (GPS) RWY 27, AMDT 1  
LP FINAL  
1:100,000

40°15'0"N



KVES 45NM 4-10-18 JRobinson  
Transverse Mercator  
Scale 1:100000

#7  
1112 TREE

#6  
1204 AAO



KVES  
DARKE COUNTY  
VERSAILLES, OH

RNAV (GPS) RWY 27, AMDT 1  
LNAV FINAL / CIRCLING  
1:100,000

A topographic map of the Ansonia, Georgia area. The map shows the Savannah River flowing from the top left towards the center, and the Woodington River flowing from the left towards the center. The town of Ansonia is located near the confluence of these rivers. Other towns shown include Woodington, Meeker, Pikeville, and Wakefield. The map features a grid of latitude and longitude lines, with a red circle and a red line drawn over it. The word "BROWN" is printed in large letters across the top, and "GREENVILLE" is printed in large letters across the bottom. The map also shows various elevation contours and smaller geographical features like "Savannah River" and "Woodington River".

#12  
1139 TREE

#13  
1165 ANTENNA

#14  
1292 TWR

#8  
1219 AAO

#7  
1112 TREE

KVES 45NM 4-10-18 JRobinson  
Transverse Mercator  
Scale 1:100000

