

Flight Procedure Tracking Form		Action: FLIGHT CHECK	Task Type: IAP	Date Open: 03/22/2017	Task #: 2017032236880701001	Request #: 20170322368807
Procedure: NDB RWY 16 AMDT 5A				Airport ID: KM18	Airport: HOPE MUNI	Reimbursable #: NO
City: HOPE	ST: AR	GPS #:	Estimated Chart Date: 03/29/2018		FICO #:	
Fac ID: HPC		Fac. Type: NDB			Specialist: JOHN HAZELTON	
Procedure Review						
	Rec'd	Rel'd	Full Name	Comments		
Lead:	06/16/2017					
QA:		12/14/2017	Boyd L Stuckey			
Liaison:						
Procedure Comments: ENROUTE-NON Remark Type: INFORMATION ACTIVE DATA USED FOR KM18 AIRPORT AND RUNWAYS MINOR AMENDMENT TO REMOVE FLIGHT CHECK ORIGINATED NOTAM 7/4890 TO REMOVE VDA ONLY. CONTACT: STEVE VARGAS/JULIE MORGAN AJV-542 POC, 405.954.0695/8568						



HOPE, ARKANSAS

AL-5530 (FAA)

FIG

NDB HPC 362	APP CRS 151°	Rwy Idg TDZE Apt Elev	5501 359 359
-----------------------	------------------------	-----------------------------	---

NDB RWY 16

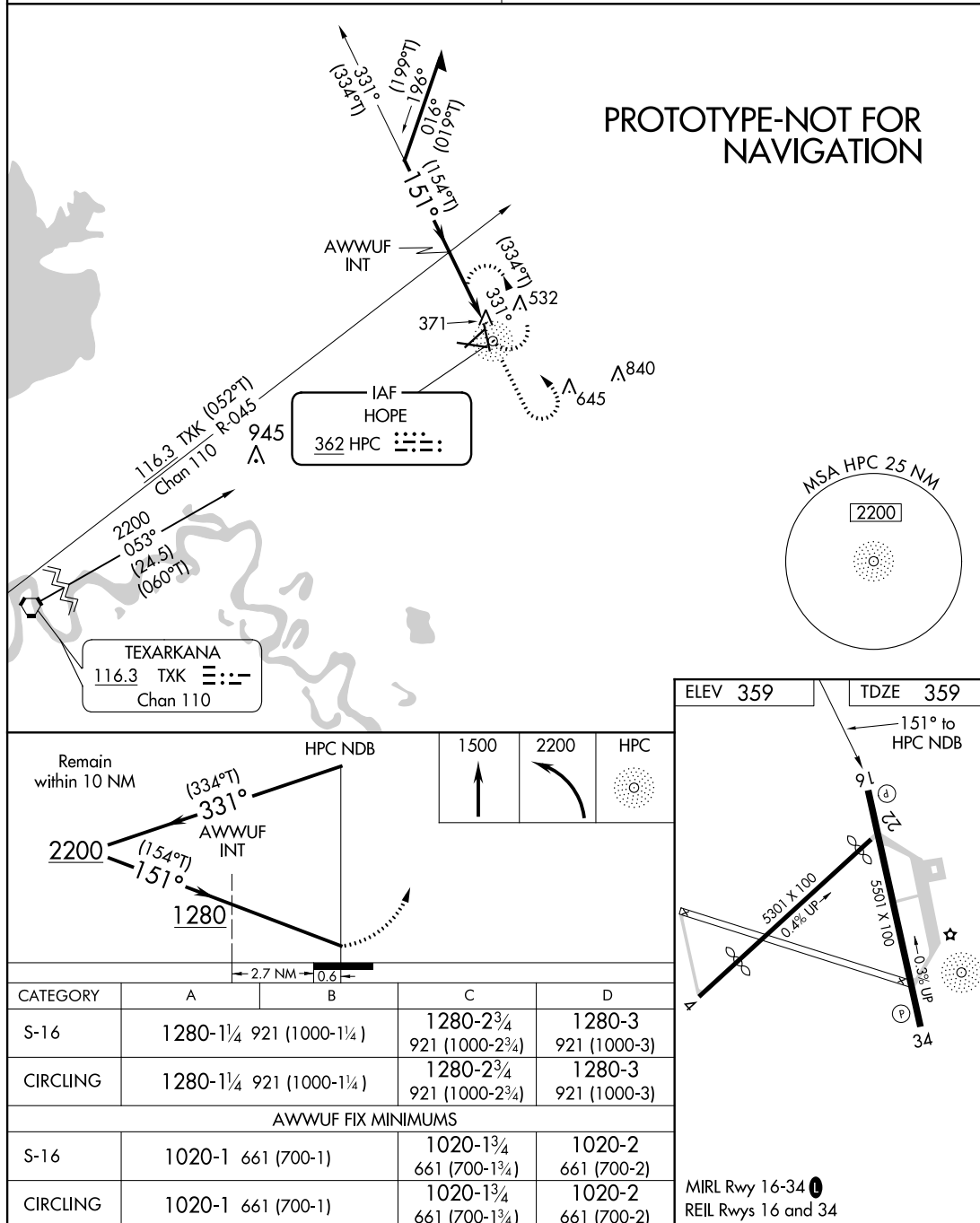
HOPE MUNI (M18)

- ▼ Use Texarkana altimeter setting; when not received use Arkadelphia altimeter setting. Rwy 16 helicopter visibility reduction below $\frac{3}{4}$ SM NA.
 ▲ NA Straight-In Rwy 16 NA at night, Circling Rwy 16 NA at night, operational VGSI required, remain on or above VGSI glidepath until threshold.

MISSED APPROACH: Climb to 1500 then climbing left turn to 2200 direct HPC NDB and hold.

FORT WORTH CENTER
123.925 269.475

UNICOM
122.8 (CTAF) 0



AUTOMATED AL-5530 NDB RWY 16

SC-1
26 DEC 2017
COMPILER: HD
REVIEWER:
DBL CHKR:
EFF DATE: FIG

HOPE, ARKANSAS
Amdt 5A FIG

33°43'N-93°40'W

HOPE MUNI (M18)
NDB RWY 16