


Flight Procedure Tracking Form		Action: AMENDMENT	Task Type: IAP	Date Open: 05/29/2018	Task #: 2017032027902106003	Request #: 20170320279021
Procedure: ILS OR LOC RWY 10L AMDT 19A			Airport ID: KORD	Airport: CHICAGO O'HARE INTL		Reimbursable #: NO
City: CHICAGO	ST: IL	GPS #:	Estimated Chart Date: 01/03/2019		FICO #:	
Fac ID: MED		Fac. Type: ILS		Specialist: PETER BUSSEY		
Procedure Review						
	Rec'd	Rel'd	Full Name	Comments		
Lead:	06/06/2018	08/31/2018	MARK ADAMS	 <div style="display: flex; justify-content: space-between;"> <div>Digitally signed by SEAN BARBEE Oct 31, 2018</div> <div>Digitally signed by WARDELL HENNING Nov 07, 2018</div> </div>		
QA:	08/31/2018					
Liaison:						
Procedure Comments: ENROUTE-NON Remark Type: INFORMATION VOR MON. FLIGHT INSPECTION REVIEW NOT REQUIRED - PROCESSED IAW AIRCRAFT OPERATIONS GROUP (AJW-33) MEMO, OCT 3, 2018, SUBJECT: FLIGHT INSPECTION NOT REQUIRED. CHANGED MSA CENTERPOINT FROM ORD VOR/DME TO KORD. CONTACT: LONNIE EVERHART: 405.954.4576.						

LOC/DME I-MED	APP CRS	Rwy Idg	12246
111.1	093°	TDZE	672
Chan 48		Apt Elev	680

ILS or LOC RWY 10L
CHICAGO-O'HARE INTL (ORD)

Simultaneous approach authorized.
DME or RADAR required.

ALSF-2

MISSED APPROACH: Climb to 4000 on heading 093° and on CGT VORTAC R-336 to CGT VORTAC and hold.

CHICAGO APP CON	O'HARE TOWERS	GND CON	(TWR CENTER)	CLNC DEL
119.0 393.1	128.15 348.0 (Rwy 9L/27R) 133.0 348.0 (10R/28L) 120.75 121.15 126.9 132.7 348.0 (CENTER)	124.125 (TWR NORTH) 118.05 (TWR SOUTH) 226.675 (ALL TWS)	121.75 (OBND) 121.9 (BND) 134.15	121.6

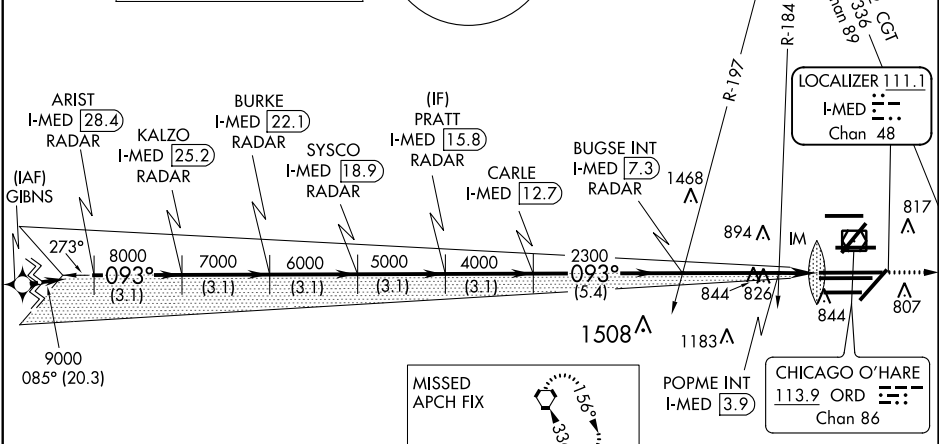
D-ATIS 135.4 282.225

ALTERNATE MISSED APCH FIX

MSA ORD 25 NM

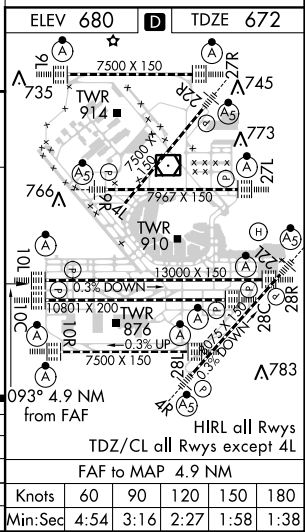
NORTHBROOK 113.0 OBK Chan 77

CPDLC



RNAV 1-GPS or RADAR REQUIRED

VGSI and ILS glidepath not coincident (VGSI Angle 3.00/TCH 74).				
ARIST I-MED 28.4 RADAR	KALZO I-MED 25.2 RADAR	BURKE I-MED 22.1 RADAR	PRATT I-MED 15.8 RADAR	BUGSE INT I-MED 7.3
9000-093°	8000-093°	7000-093°	6000-093°	5000-093°
4000	3000	2000	1000	0
3.1 NM	3.1 NM	3.1 NM	3.1 NM	5.4 NM
*LOC only.				
POPME FIX MINIMUMS (DUAL VOR RECEIVERS OR DME REQUIRED)				
S-ILS 10L	872/18		200 (200-½)	
S-LOC 10L	1200/24 528 (600-½)		1200/55 528 (600-¼)	
S-LOC 10L	1080/24 408 (400-½)		1080/40 408 (400-¾)	



EC-3, 19 JUL 2018 to 16 AUG 2018

EC-3, 19 JUL 2018 to 16 AUG 2018