

Flight Procedure Tracking Form		Action: FLIGHT CHECK	Task Type: IAP	Date Open: 02/28/2017	Task #: 2017022829747501001	Request #: 20170228297475
Procedure: RNAV (GPS) RWY 30 AMDT 1A			Airport ID: KGPI	Airport: GLACIER PARK INTL	Reimbursable #: NO	
City: KALISPELL	ST: MT	GPS #:	Estimated Chart Date: 01/03/2019		FICO #:	
Fac ID: N/A		Fac. Type:		Specialist: DEANNA FIELDS		
Procedure Review						
	Rec'd	Rel'd	Full Name	Comments		
Lead:	03/14/2017					
QA:				31 vbn 09/21/18		
Liaison:						
Procedure Comments:			Remark Type: INFORMATION			
<p>P NOTAM.</p> <p>CONTACT: DEZ SILAGYI, SUB-TEAM MANAGER, IFP TEAM 2, 405.954.5340 (OR) JULIE MORGAN, MANAGER, AJV-542, INSTRUMENT FLIGHT PROCEDURES TEAM 2, 405.954.8568.</p> <p>THIS CANCELS NOTAM FDC 8/7003.</p>						

KALISPELL, MONTANA

AL-887 (FAA)

18200

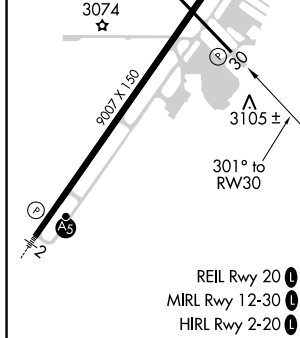
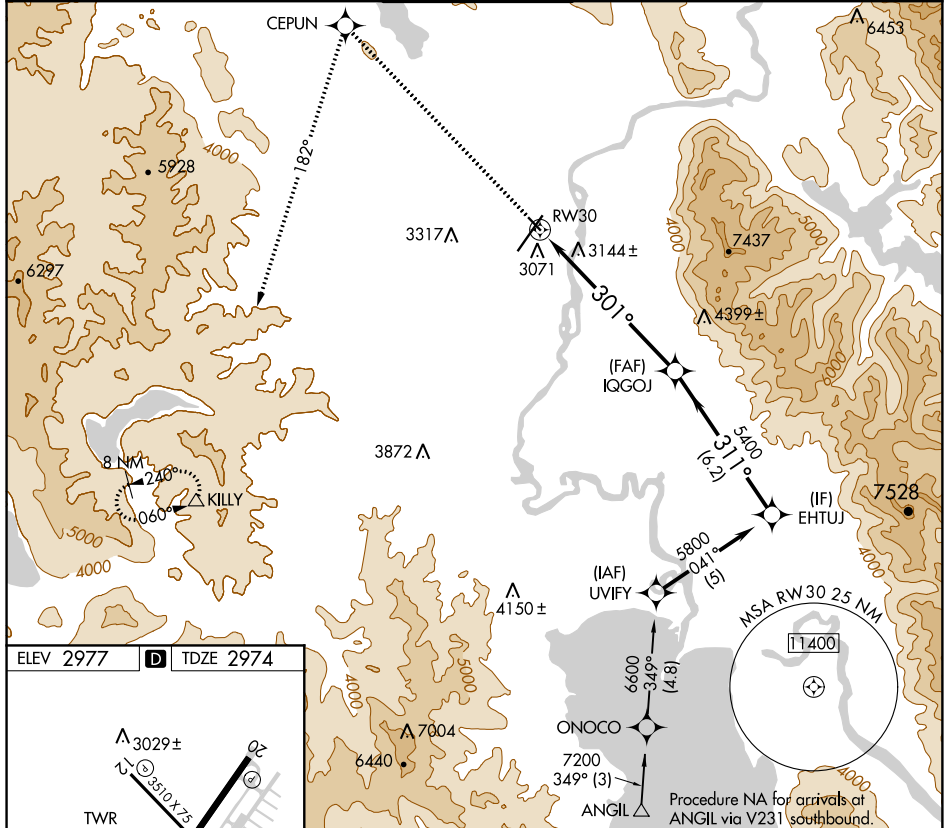
APP CRS	Rwy Idg	3510
301°	TDZE	2974
	Apt Elev	2977

RNAV (GPS) RWY 30

GLACIER PARK INTL (GPI)

<p>7 Straight-in minimums NA at night. DME/DME RNP-0.3 NA. Visibility reduction by helicopters NA.</p>	<p>MISSED APPROACH: Climb to 12000 direct CEPUN and left turn via track 182° to KILLY and hold, continue climb-in-hold to 12000.</p>
---	--

ATIS 132.625	SALT LAKE CENTER 133.4 285.4	GLACIER TOWER★ 124.55 (CTAF) 0	GND CON 121.6	UNICOM 122.95
------------------------	--	--	-------------------------	-------------------------



12000	CEPUN	KILLY	VGSI and descent angles not coincident (VGSI Angle 3.50/TCH 26).	EHTUJ
↑	182° tr	△	IQGOJ	5800
			301°	5400
			3.21° TCH 45	Procedure Turn NA
			7 NM	6.2 NM
CATEGORY	A	B	C	D
LNNAV MDA	3460-1	486 (500-1)	3460-1¼ 486 (500-1¼)	3460-1½ 486 (500-1½)
CIRCLING	3520-1	543 (600-1)	3640-1¾ 663 (700-1¾)	3640-2 663 (700-2)

KALISPELL, MONTANA
Amdt 1 02JUL09

48°19'N-114°15'W

GLACIER PARK INTL (GPI)

RNAV (GPS) RWY 30

NW-1, 16 AUG 2018 to 13 SEP 2018

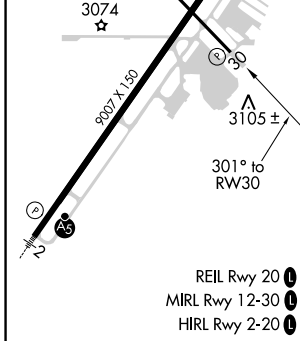
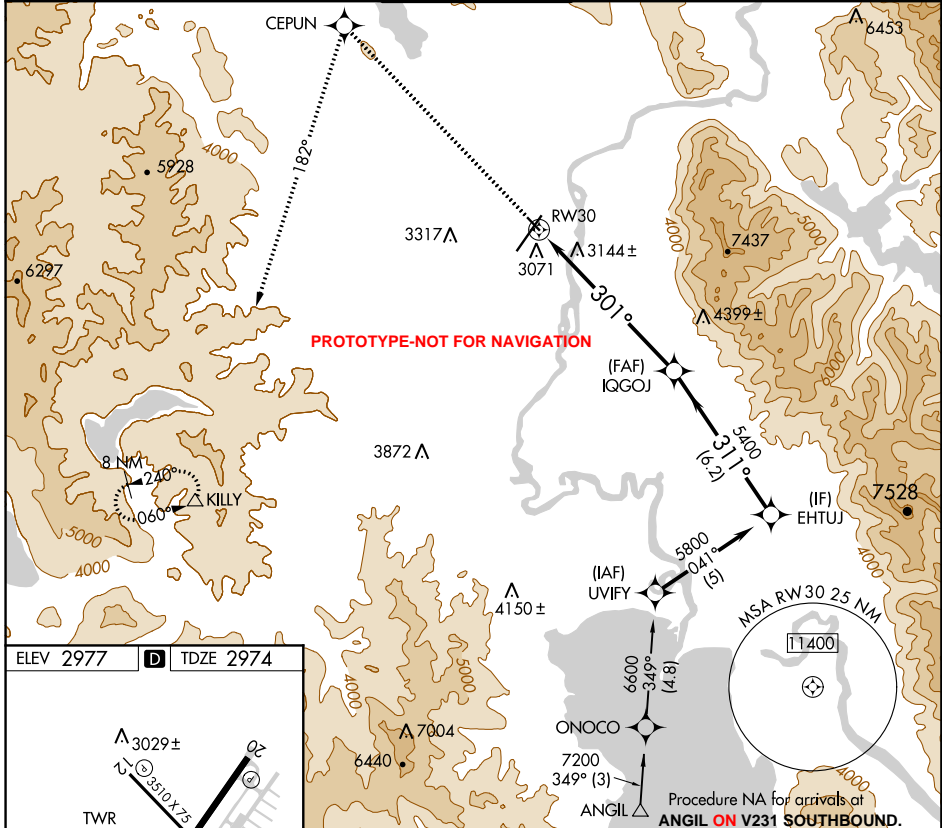
NW-1, 16 AUG 2018 to 13 SEP 2018

KALISPELL, MONTANA

APP CRS	Rwy Idg	3510
301°	TDZE	2974
	Apt Elev	2977

RNP APCH
▼ RWY 30 HELICOPTER VISIBILITY REDUCTION BELOW 3/4 SM NOT AUTHORIZED.

ATIS 132.625	SALT LAKE CENTER 133.4 285.4	GLACIER TOWER★ 124.55 (CTAF) 0	GND CON 121.6	UNICOM 122.95
-----------------	---------------------------------	-----------------------------------	------------------	------------------



12000	CEPUN	KILLY	VGSI and descent angles not coincident (VGSI Angle 3.50/TCH 26)	EHTUJ
↑	★	△	IQGOJ	5800
	182° tr			5400
				311°
				301°
				3.21° TCH 45
				7 NM
				6.2 NM
				Procedure Turn NA
CATEGORY	A	B	C	D
LNNAV MDA	3500-1 526	3500-1½ 526	3500-1½ 526	3500-1½ 526
CIRCLING	3520-1 543 (600-1)	3580-1 603 (700-1)	3640-1¾ 663 (700-1¾)	3760-2¾ 783 (800-2¾)

KALISPELL, MONTANA

Amdt 1A

48°19'N-114°15'W

RNAV (GPS) RWY 30

GLACIER PARK INTL (GPI)

RNAV (GPS) RWY 30

KGPI
GLACIER PARK INTL
KALISPELL, MT
RNAV (GPS) RWY 30, Amdt 1A
1: 500,000

CIRCLING
CAT D
3460' AAO

CIRCLING
CAT C
3339' TREE

CIRCLING
CAT B
3276' TREE

CIRCLING CAT A
3180' TREE

LNAV FINAL
3188' TREE

