

<b>Flight Procedure Tracking Form</b>		<b>Action:</b> AMENDMENT	<b>Task Type:</b> IAP	<b>Date Open:</b> 08/30/2017	<b>Task #:</b> 2017022730823508001	<b>Request #:</b> 20170227308235
<b>Procedure:</b> RNAV (GPS) RWY 24 AMDT 0B			<b>Airport ID:</b> KRVL	<b>Airport:</b> MIFFLIN COUNTY		<b>Reimbursable #:</b> NO
<b>City:</b> REEDSVILLE	<b>ST:</b> PA	<b>GPS #:</b>	<b>Estimated Chart Date:</b> 02/01/2018		<b>FICO #:</b>	
<b>Fac ID:</b> N/A		<b>Fac. Type:</b>		<b>Specialist:</b> CARLOS ESCALANTE		
<b>Procedure Review</b>						
	<b>Rec'd</b>	<b>Rel'd</b>	<b>Full Name</b>	<b>Comments</b>		
<b>Lead:</b>	08/30/2017	10/10/2017	DAVID TEFFETELLER	 <i>Digitally signed by</i> <b>DAVID W SAUER</b>		
<b>QA:</b>	10/10/2017			 Oct 16, 2017		
<b>Liaison:</b>						
<b>Procedure Comments:</b> ENROUTE-NON <b>Remark Type:</b> INFORMATION  TACR (SELINSGROVE - SEG)  P-NOTAM - NO FLIGHT CHECK REQUIRED - PROCESSED IAW FLIGHT INSPECTION TEAM (AJW-333) MEMO, MAY 30, 2017.  UPDATED HELICOPTER NOTE ALL REFERENCE TO SEG VORTAC CHANGED TO READ SEG VOR/DME   CONTACT PATRICK MULQUEEN (MANAGER) (405) 954-4073						

# OLD



AL-5979 (FAA)

16091

WAAS CH <b>78107</b> <b>W24A</b>	APP CRS <b>239°</b>	Rwy Idg TDZE Apt Elev	<b>5001</b> <b>818</b> <b>819</b>
--	------------------------	-----------------------------	---

# RNAV (GPS) RWY 24

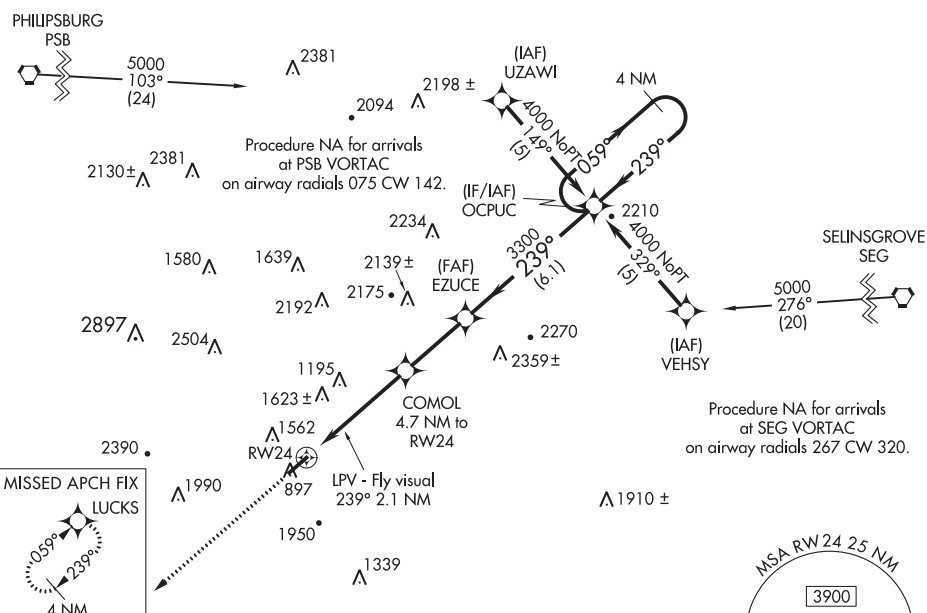
## MIFFLIN COUNTY (RVL)

 Circling NA northwest of Rwy 6-24. When local altimeter setting not received, use State College altimeter setting and increase LPV DA to 1602, increase all MDAs 100 feet; increase LPV visibility to 2 3/4 all Cats. DME/DME RNP-0.3 NA.
   
 NA
   
 -22°C/-8°F
   
 Helicopter visibility reduction below 3/4 SM NA.

**MISSED APPROACH:**  
Climb to 4000 direct  
LUCKS and hold.

AWOS-3  
123.85

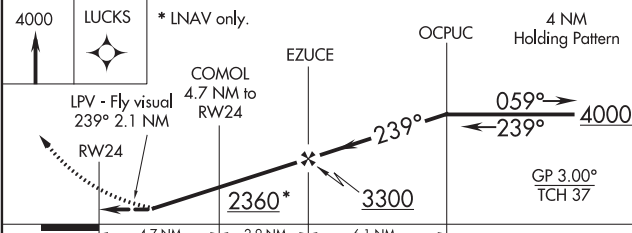
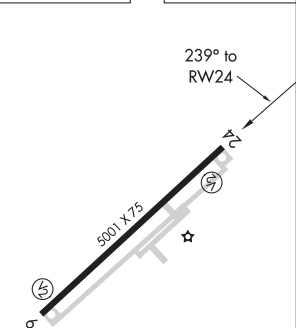
NEW YORK CENTER  
**134.8 338.3**

UNICOM  
122.7 (CTAF) **L**

NE-4, 17 AUG 2017 to 14 SEP 2017

NE-4, 17 AUG 2017 to 14 SEP 2017

ELEV 819		TDZE 818
----------	--	----------



CATEGORY	4.7 NM		2.9 NM		0.1 NM		D
	A		B		C		
LPV DA	1509-2 691 (700-2)						1509-2¼ 691 (700-2¼)
LNAV MDA	2220-1¼ 1402 (1500-1¼)	2220-1½ 1402 (1500-1½)	2220-3		1402 (1500-3)		
CIRCLING	2220-1¼ 1401 (1500-1¼)	2220-1½ 1401 (1500-1½)	2220-3 1401 (1500-3)		2360-3 1541 (1600-3)		

REIL Rwy 6 and 24 **L**  
MIRL Rwy 6-24 **L**

REEDSVILLE, PENNSYLVANIA  
Orig-A 12NOV15

MIFFLIN COUNTY (RVL)

40°41'N-77°38'W

RNAV (GPS) RWY 24