



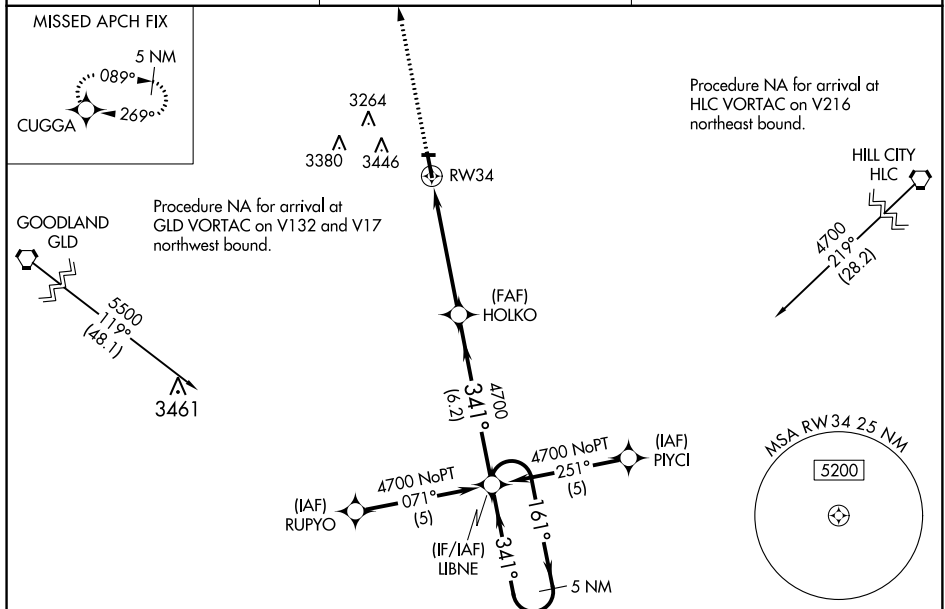
| | | | | | | |
|---|---------------|-----------------------------|---|---|---------------------------------------|-------------------------------------|
| Flight Procedure Tracking Form | | Action: AMENDMENT | Task Type: IAP | Date Open: 02/21/2017 | Task #: 2017022127826301002 | Request #: 20170221278263 |
| Procedure: APPROACH RNAV (GPS) RWY 34 ORIG-A | | | Airport ID: KOEL | Airport: OAKLEY MUNI | | Reimbursable #: NO |
| City: OAKLEY | ST: KS | GPS #: | Estimated Chart Date: 06/20/2019 | | FICO #: | |
| Fac ID: N/A | | Fac. Type: | | Specialist: DEANNA FIELDS | | |
| Procedure Review | | | | | | |
| | Rec'd | Rel'd | Full Name | Comments | | |
| Lead: | 02/21/2017 | | | <div style="text-align: right;">  Digitally signed by 30 BRYAN W BLUE Apr 11, 2019 </div> | | |
| QA: | | | | <div style="text-align: right;">  </div> | | |
| Liaison: | | | | | | |
| Procedure Comments: ENROUTE-NON Remark Type: INFORMATION P NOTAM. NEW OBSTACLE DATA: 20-053855, TOWER 3128 MSL 390628.94N/1004840.63W (2C). PROCESSED IAW AIRCRAFT OPERATIONS GROUP (AJW-33) MEMO, OCTOBER 3, 2018, SUBJECT: FLIGHT INSPECTION REVIEW NOT REQUIRED. CONTACT: DAVID DANNER, SUB-TEAM MANAGER, IFP TEAM 2, 405.954.5077 (OR) JULIE MORGAN, MANAGER, AJV-542, INSTRUMENT FLIGHT PROCEDURES TEAM 2, 405.954.8568. THIS CANCEL NOTAM(S) FDC 8/9099 & 9/4677. | | | | | | |

| | | | |
|--|------------------------|-----------------------------|---|
| WAAS CH 69500 W34A | APP CRS 341° | Rwy Idg TDZE Apt Elev | 5000 3035 3045 |
|--|------------------------|-----------------------------|---|

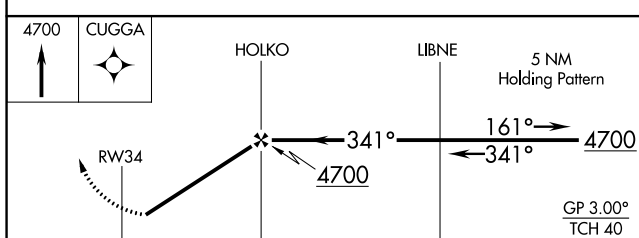
RNAV (GPS) RWY 34 OAKLEY MUNI (OEL)

| | |
|---|---|
| <p>NA</p> <p>DME/DME RNP-0.3 NA. If local altimeter setting not received, use Renner Field/Goodland Muni altimeter setting and increase all DAs/MDAs 200 feet. Visibility reduction by helicopters NA. For uncompensated Baro-VNAV systems, LNAV/VNAV NA below -21°C (-5°F) or above 42°C (109°F). Baro-VNAV NA when using Renner Field/Goodland Muni altimeter setting.</p> | <p>MISSED APPROACH: Climb to 4700 direct CUGGA and hold.</p> |
|---|---|

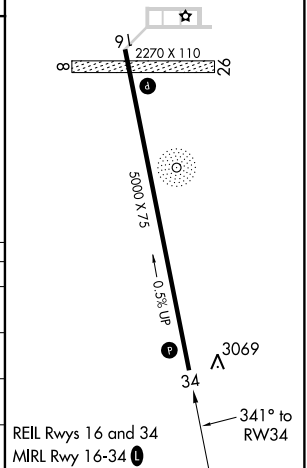
| | | |
|----------------------------------|---|---------------------------------------|
| <p>AWOS-3 118.325</p> | <p>DENVER CENTER 132.7 226.675</p> | <p>UNICOM 122.8 (CTAF)</p> |
|----------------------------------|---|---------------------------------------|



| | |
|-----------|-----------|
| ELEV 3045 | TDZE 3035 |
|-----------|-----------|



| CATEGORY | A | B | C | D |
|--------------|-------------------------|-------------------------|-------------------------|----|
| LPV DA | 3285-1 | 250 (300-1) | | NA |
| LNAV/VNAV DA | 3472-1½ | 437 (500-1½) | | NA |
| LNAV MDA | 3320-1 | 285 (300-1) | | NA |
| CIRCLING | 3480-1½ 435 (500-1½) | 3500-1½ 455 (500-1½) | 3800-2¼ 755 (800-2¼) | NA |



OEL
OAKLEY MUNI
OAKLEY, KS
RNAV (GPS) RWY 34, ORIG-A
1:100,000

LNAV FINAL

LNAV: TOWER (3128)
20-053855