

Flight Procedure Tracking Form		Action: AMENDMENT	Task Type: IAP	Date Open: 02/10/2017	Task #: 2017021026596401003	Request #: 20170210265964
Procedure: VOR RWY 22 AMDT 2A			Airport ID: K6S8	Airport: LAUREL MUNI		Reimbursable #: NO
City: LAUREL	ST: MT	GPS #:	Estimated Chart Date: 12/07/2017		FICO #:	
Fac ID: BIL		Fac. Type: VORTAC			Specialist: ROBERT COOK	
Procedure Review						
	Rec'd	Rel'd	Full Name	Comments		
Lead:	02/10/2017			QUALITY		
QA:				20 B. BICKETT 8/17/2017		
Liaison:				CHECKED		
Procedure Comments:			ENROUTE-NON			
			Remark Type: INFORMATION			
FLIGHT INSPECTION REVIEW NOT REQUIRED - PROCESSED IAW FLIGHT INSPECTION TEAM (AJW-333) MEMO, MAY 30, 2017. CONTACT ALLAN WILL, AJV-5412, 405-954-6103.						

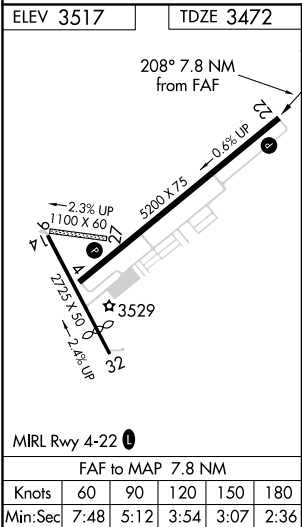
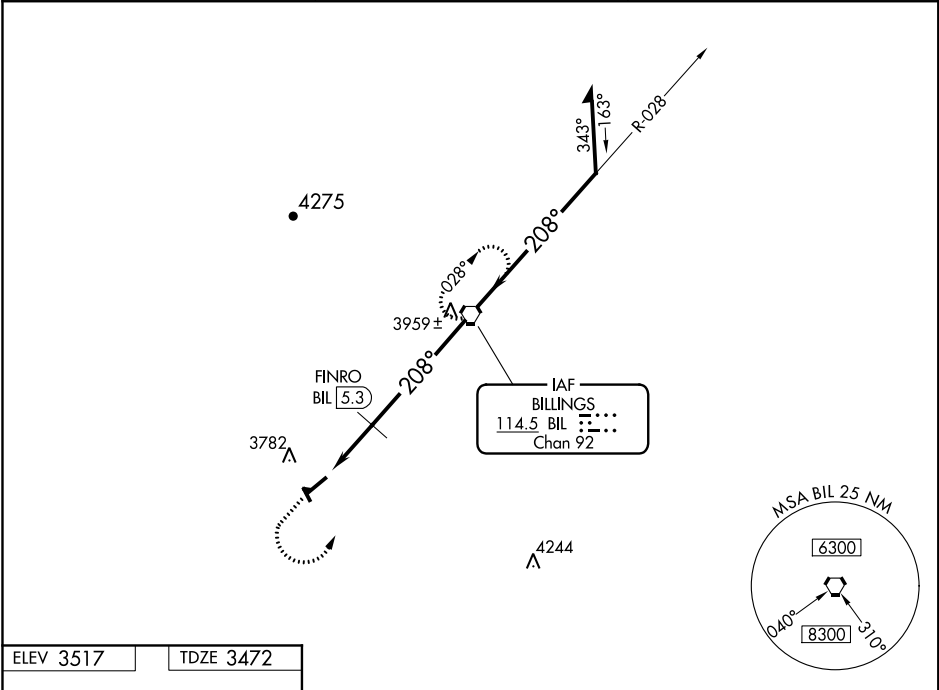


VORTAC BIL	APP CRS	Rwy Idg	5200
114.5	208°	TDZE	3472
Chan 92		Apt Elev	3517

VOR RWY 22
LAUREL MUNI (6S8)

<p>NA</p> <p>-30°C</p>	Use Billings altimeter setting.	MISSED APPROACH: Climb to 4700 then climbing left turn to 6300 direct BIL VORTAC and hold.
------------------------	---------------------------------	--

AWOS-2 135.05	BILLINGS APP CON 119.2 120.5 284.6	AUNICOM 123.05 (CTAF) 0
------------------	---------------------------------------	----------------------------



4700

↑

6300

↷

BIL

⬢

BIL

VORTAC

↘ 028°

Remain within 10 NM

BIL

7.8

FINRO

BIL

5.3

3.21°

TCH 40

208°

4360

208°

6300

2.5 NM

5.3 NM

✖

6300

VGSI and descent angles not coincident (VGSI Angle 3.00/TCH 44).

CATEGORY	A		B		C	D
S-22	4360-1¼ 888 (900-1¼)				4360-2¾ 888 (900-2¾)	4360-3 888 (900-3)
CIRCLING	4360-1¼ 843 (900-1¼)				4360-2¾ 843 (900-2¾)	4360-3 843 (900-3)
FINRO FIX MINIMUMS						
S-22	4160-1 688 (700-1)				4160-2 688 (700-2)	4160-2¼ 688 (700-2¼)
CIRCLING	4220-1 703 (800-1)				4220-2 703 (800-2)	4340-2¾ 823 (900-2¾)