

| | | | | | | |
|----------------------------------------------------------------------------------------------------------------------------------------------------------------------------------------------------------------------------------------------------------------------------------------------------------------------------------------------------------------------------------------------------------------------------------------------------------------------------------------------------------------------------------------------------------------------------------------------------------------------------|---------------|-----------------------------|-----------------------------------------|------------------------------------|---------------------------------------|-------------------------------------|
| Flight Procedure Tracking Form | | Action: AMENDMENT | Task Type: IAP | Date Open: 10/23/2017 | Task #: 2017020726997201016 | Request #: 20170207269972 |
| Procedure: RNAV (GPS) RWY 32 AMDT 2C | | | Airport ID: KMKG | Airport: MUSKEGON COUNTY | | Reimbursable #: NO |
| City: MUSKEGON | ST: MI | GPS #: | Estimated Chart Date: 05/24/2018 | | FICO #: 1202412 | |
| Fac ID: N/A | | Fac. Type: | | Specialist: JAMES ROGERS | | |
| Procedure Review | | | | | | |
| | Rec'd | Rel'd | Full Name | Comments | | |
| Lead: | 10/02/2017 | 04/03/2018 | DAVID DANNER | QUALITY Digitally signed by | | |
| QA: | 12/22/2017 | 12/22/2017 | ROBERT HAMILTON | 35 JEFFREY ROBINSON | | |
| Liaison: | 12/22/2017 | 12/26/2017 | MARY MCDONALD | CHECKED Apr 09, 2018 | | |
| Procedure Comments: | | | Remark Type: INFORMATION | | | |
| <p>03/26/18: THIS IS AN UPDATED COPY OF THE FORM DEVELOPED ON 10/23/17.</p> <p>1. CHANGED AMENDMENT NUMBER FROM 2D TO 2C TO CORRECT AN ADMINISTRATIVE ERROR.</p> <p>04/09/18: THIS IS A CORRECTED COPY OF THE FORM APPROVED ON 4/03/18.</p> <p>1. CHANGED THRE 629 TO TDZE 629 TO CORRECT AN ADMINISTRATIVE ERROR.</p> <p>ABBREVIATED AMENDMENT TO UPDATE CIRCLING RADII. REMOVING MKG VORTAC AND HIC VOR/DME FROM PROCEDURE DUE TO FACILITIES BEING DECOMMISSIONED.</p> <p>CANCELS FDC NOTAM 7/1862.</p> <p>ACTIVE DATA USED FOR KMKG AIRPORT AND RUNWAYS.</p> <p>CONTACT: STEVE VARGAS, 405.954.0695, AJV-5421 LEAD.</p> | | | | | | |

| | | | |
|----------------------------------------|------------------------|-----------------------------|-----------------------------------------|
| WAAS CH 63010 W32A | APP CRS 321° | Rwy Idg TDZE Apt Elev | 6100 629 629 |
|----------------------------------------|------------------------|-----------------------------|-----------------------------------------|

RNAV (GPS) RWY 32
MUSKEGON COUNTY (MKG)

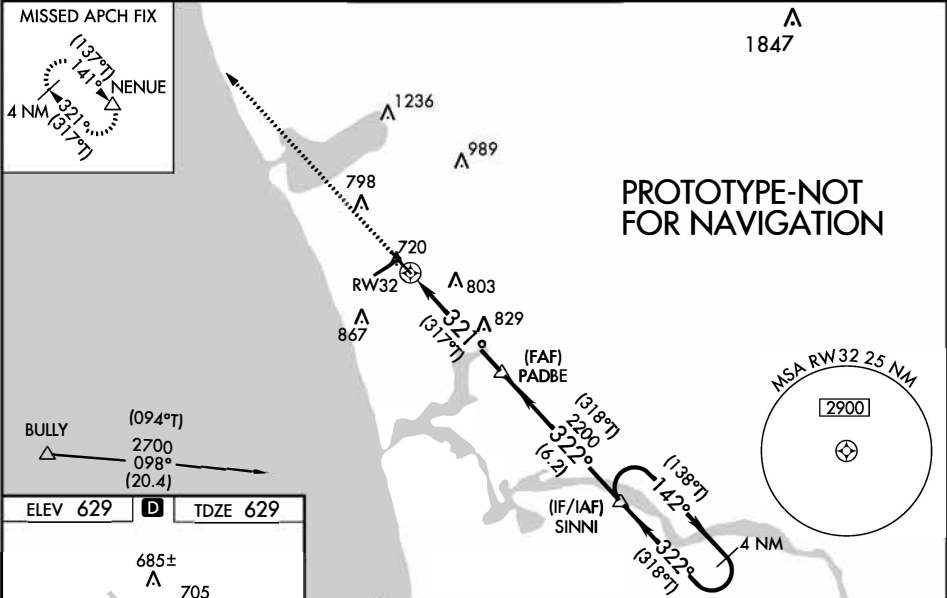
ASR

For uncompensated BARO-VNAV systems, LNAV/VNAV NA below -18C (0F) or above 54C (130F).
Baro-VNAV and VDP NA when using Fremont altimeter setting. DME/DME RNP-0.3 NA. For inop
ALS, increase LNAV/VNAV all Cats visibility to RVR 4500; LNAV Cats A and B visibility to RVR 5500
and Cats C and D visibility to 1 3/8 SM. When local altimeter setting not received use Fremont
altimeter setting: increase LPV DA to 894 feet, LNAV/VNAV DA to 980 feet and all MDA 80 feet;
increase LNAV/VNAV visibility all Cats to RVR 3000 and LNAV Cats C and D to RVR 5500. increase
circling Cat C visibility to 1 3/4 SM. For inoperative ALS when using Fremont altimeter setting,
increase LPV all Cats visibility to RVR 4500, LNAV/VNAV all Cats visibility to RVR 5500 and LNAV
Cats C and D visibility to 1 1/2 SM. **RVR 1800 authorized with use of FD or AP or HUD to DA, NA
when using Fremont altimeter setting.

MALS

MISSED APPROACH:
Climb to 2300 direct
NENUE and hold.

| | | | | |
|----------------------|---------------------------------------------------------------------------------------|--------------------------------------------------------|-------------------------|-------------------------|
| ATIS 124.3 | MUSKEGON APP CON★ 119.8 290.35 (N of V2) 133.825 290.35 (S of V2) | MUSKEGON TOWER★ 126.25 (CTAF) 343.725 | GND CON 121.6 | UNICOM 122.95 |
|----------------------|---------------------------------------------------------------------------------------|--------------------------------------------------------|-------------------------|-------------------------|



2300

NENUE

*LNAV only

*1.3 NM to RW32

PADBE

2200

SINNI

4 NM Holding Pattern

(138°T)

142°

2700

322° (318°T)

322° (318°T)

GP 3.00° TCH 50

1.3 NM

3.5 NM

6.2 NM

| CATEGORY | A | B | C | D |
|--------------|-----------------------|-----------------------|-------------------------|-----------------------|
| ** LPV DA | | 829/24 | 200 (200-½) | |
| LNAV/VNAV DA | | 915/24 | 286 (300-½) | |
| LNAV MDA | 1080/24 | 451 (500-½) | 1080/45 | 451 (500-¾) |
| CIRCLING | 1080-1 451 (500-1) | 1180-1 551 (600-1) | 1200-1½ 571 (600-1½) | 1200-2 571 (600-2) |

OLD

MUSKEGON, MICHIGAN

AL-278 (FAA)

17229

| | | | |
|----------------------------------------|------------------------|-----------------------------|-----------------------------------------|
| WAAS CH 63010 W32A | APP CRS 321° | Rwy Idg TDZE Apt Elev | 6100 629 629 |
|----------------------------------------|------------------------|-----------------------------|-----------------------------------------|

RNAV (GPS) RWY 32

MUSKEGON COUNTY (MKG)

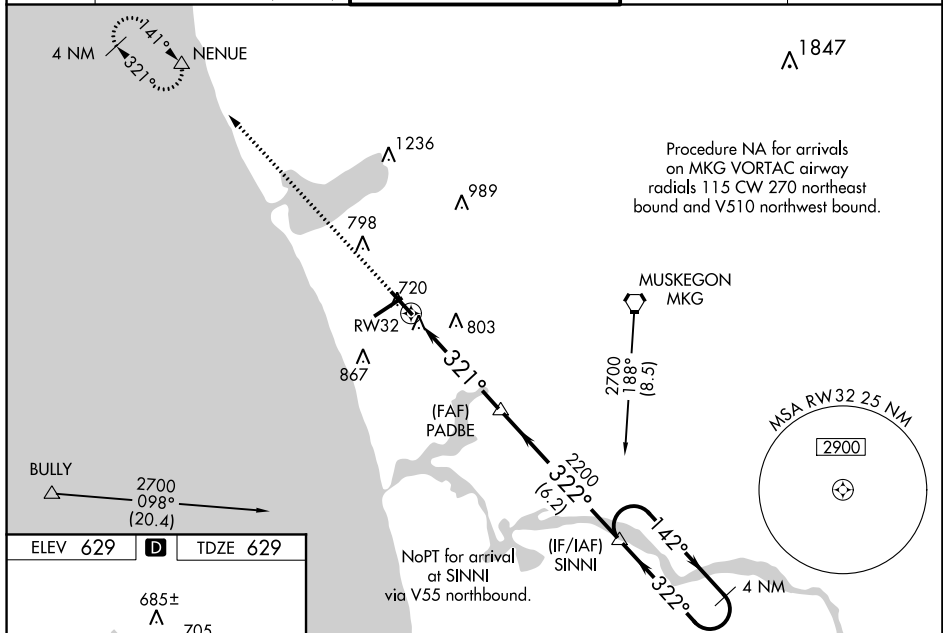
ASR

For uncompensated Baro-VNAV systems, LNAV/VNAV NA below -16°C (4°F) or above 54°C (130°F). DME/DME RNP-0.3 NA. For inoperative MALSR, increase LNAV/VNAV all Cats visibility to RVR 4500; LNAV Cats A and B visibility to RVR 5500 and Cats C and D visibility to 1½ mile. When local altimeter setting is not received use Fremont Muni altimeter setting: increase DA 65 feet and all MDAs 80 feet; increase LNAV/VNAV visibility all Cats to RVR 3000 and LNAV Cats C and D to RVR 5500. Increase Circling Cat C visibility to 1¾ mile. Baro VNAV and YDP NA when using Fremont Muni altimeter setting. For inoperative MALSR when using Fremont Muni altimeter setting, increase LPV all Cats visibility to RVR 4500, LNAV/VNAV all Cats visibility to RVR 5500 and LNAV Cats C and D visibility to 1½ mile. ** RVR 1800 authorized with use of FD or AP or HUD to DA.

MALS

MISSED APPROACH:
Climb to 2300 direct NENUE and hold.

| | | | | |
|-----------------------|----------------------------------------------------------------------------------------|-----------------------------------------------------------|-------------------------|-------------------------|
| ASOS 124.30 | MUSKEGON APP CON ★ 119.8 290.35 (N of V2) 133.825 290.35 (S of V2) | MUSKEGON TOWER ★ 126.25 (CTAF) 0 343.725 | GND CON 121.6 | UNICOM 122.95 |
|-----------------------|----------------------------------------------------------------------------------------|-----------------------------------------------------------|-------------------------|-------------------------|



321° to RW32

321°

322°

2200

2200

2700

142°

322°

GP 3.00° TCH 50

4 NM Holding Pattern

SINNI

PADBE

2200

*1.3 NM to RW32

*LNAV only

2300

NENUE

2700

142°

322°

321°

2200

1.3 NM

3.5 NM

6.2 NM

| CATEGORY | A | B | C | D |
|-------------------|---------------------|---------------------|----------------------|--------------------|
| LPV DA | | **829/24 | 200 (200-½) | |
| LNAV/VNAV DA | | 915/24 | 286 (300-1) | |
| LNAV MDA | 1080/24 451 (500-½) | 1080/45 451 (500-¾) | | |
| C CIRCLING | 1080-1 451 (500-1) | 1180-1 551 (600-1) | 1200-1½ 571 (600-1½) | 1200-2 571 (600-2) |

MUSKEGON, MICHIGAN

Amdt 2B 17AUG17

43°10'N-86°14'W

RNAV (GPS) RWY 32

EC-1, 17 AUG 2017 to 14 SEP 2017

EC-1, 17 AUG 2017 to 14 SEP 2017

TERMINAL AIRSPACE DATA REQUIREMENTS

CITY: **MUSKEGON**

STATE: **MI**

AIRPORT NAME: **MUSKEGON COUNTY**

ID: **KMKG**

PROCEDURE: **RNAV (GPS) RWY 32**

AMDT: **2**

DOCKET#: **NOT REQUIRED**

(96-AXX-X/Required/Not Required)

ALL DIST TO 1/100 NM; ELEV TO NEAREST FT; COORD TO 1/100 SEC; DEG TO 1/100 DG.

| | | | |
|----------------------------------------------------------------------------|-------------------|--------------------------------|--------------------|
| 1. Distance from | <u>THLD</u> | to 1000' point | <u>3.21</u> |
| (Enter THLD, FAF, ARP, FACILITY, as appropriate) | | | |
| 2. Width of | <u>FINAL</u> | segment at 1000' point | <u>1.20</u> |
| (Enter appropriate segment, final, intermediate, etc.) | | | |
| 3. True Course of | <u>FINAL</u> | segment containing 1000' point | <u>317.45</u> |
| 4. High Terrain in | <u>FINAL</u> | segment containing 1000' point | <u>659</u> |
| 5. Distance from | <u>THLD</u> | to 1500' point | <u>4.78</u> |
| (If 1500' point in PT maneuvering area or holding pattern note in remarks) | | | |
| 6. Width of | <u>FINAL</u> | segment at 1500' point | <u>2.13</u> |
| 7. True Course of | <u>FINAL</u> | segment containing 1500' point | <u>317.45</u> |
| 8. High Terrain in | <u>FINAL</u> | segment containing 1500' point | <u>659</u> |
| 9. Threshold Coordinates (if straight-in) ... | <u>430945.68N</u> | / | <u>0861319.36W</u> |
| 10. ARP Coordinates | <u>431003.62N</u> | / | <u>0861407.58W</u> |
| 11. Runway Approach End and distance furthest from ARP | RWY | <u>6</u> | |
| | Distance | <u>0.77</u> | NM |
| 12. FAF Coordinates | <u>430614.52N</u> | / | <u>0860854.47W</u> |

REMARKS: Approach/Drawing attached.

**KMKG - MUSKEGON COUNTY
MUSKEGON, MI
RNAV (GPS) RWY 32, AMDT 2C
SCALE: 1:100000
LNAV FINAL, NEW CIRCLING**

**11
CIRCLING CAT A
779 MSL TANK**

**13
CIRCLING CAT C/D
899 MSL TOWER**

**12
CIRCLING CAT B
867 MSL TOWER**

