

Flight Procedure Tracking Form		Action: FLIGHT CHECK	Task Type: IAP	Date Open: 02/27/2018	Task #: 2017012631164405001	Request #: 20170126311644
Procedure: VOR RWY 31 AMDT 3			Airport ID: KTYR	Airport: TYLER POUNDS RGNL		Reimbursable #: NO
City: TYLER	ST: TX	GPS #:	Estimated Chart Date: 11/08/2018		FICO #:	
Fac ID: TYR		Fac. Type: VOR_DME			Specialist: JANTZEN TAYLOR	
Procedure Review						
	Rec'd	Rel'd	Full Name	Comments		
Lead:	05/01/2018	07/18/2018	MARK ADAMS	<div>QUALITY</div> <div>41</div> <div>CHECKED</div>		
QA:	07/18/2018					
Liaison:						
Procedure Comments: ENROUTE-NON Remark Type: INFORMATION PENDING DATA USED FOR KTYR AIRPORT AND RUNWAY DATA. AMENDED PROCEDURE TO REMOVE NOTAMS FDC 8/4678, 7/4511 LONNIE EVERHART 405.954.4576						

VOR/DME TYR	APP CRS	Rwy Idg	5200
114.2	305°	TDZE	544
Chan 89		Apt Elev	544

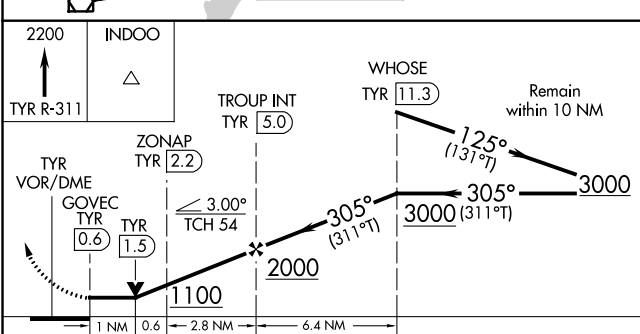
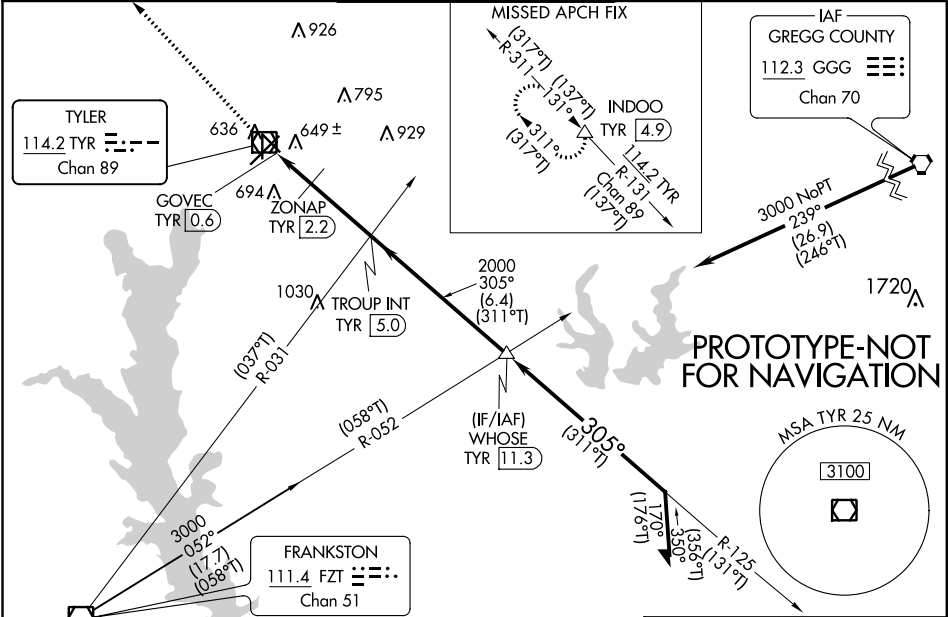
VOR RWY 31
TYLER POUNDS RGNL (TYR)

▼

▲ Rwy 31 helicopter visibility reduction below ¾ SM NA.

MISSED APPROACH: Climb to 2200 on TYR VOR/DME R-311 to INDOO LOM INT/4.9 DME and hold.

ATIS	LONGVIEW APP CON ★	POUNDS TOWER ★	GND CON	UNICOM
126.25	128.75 379.15	120.1 (CTAF) 0 257.8	121.9	122.95



CATEGORY	A	B	C	D
S-31	1100-1	556 (600-1)	1100-1½	556 (600-1½)
CIRCLING	1100-1	556 (600-1)	1160-1¾ 616 (700-1¾)	1280-2¼ 736 (800-2¼)
ZONAP FIX MINIMUMS (DME REQUIRED)				
S-31	900-1 356 (400-1)			
CIRCLING	980-1 436 (500-1)	1020-1 476 (500-1)	1160-1¾ 616 (700-1¾)	1280-2¼ 736 (800-2¼)

ELEV 544 D TDZE 544

REIL Rwy 4 and 22
HIRL Rwy 13-31
MIRL Rlys 4-22 and 17-35

FAF to MAP 4.8 NM

Knots	60	90	120	150	180
Min:Sec	4:48	3:12	2:24	1:55	1:36

TYLER, TEXAS

OLD

18144

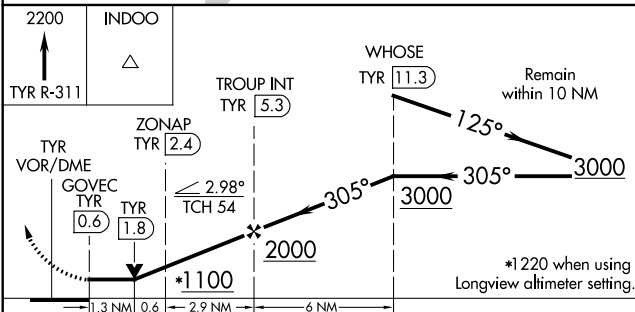
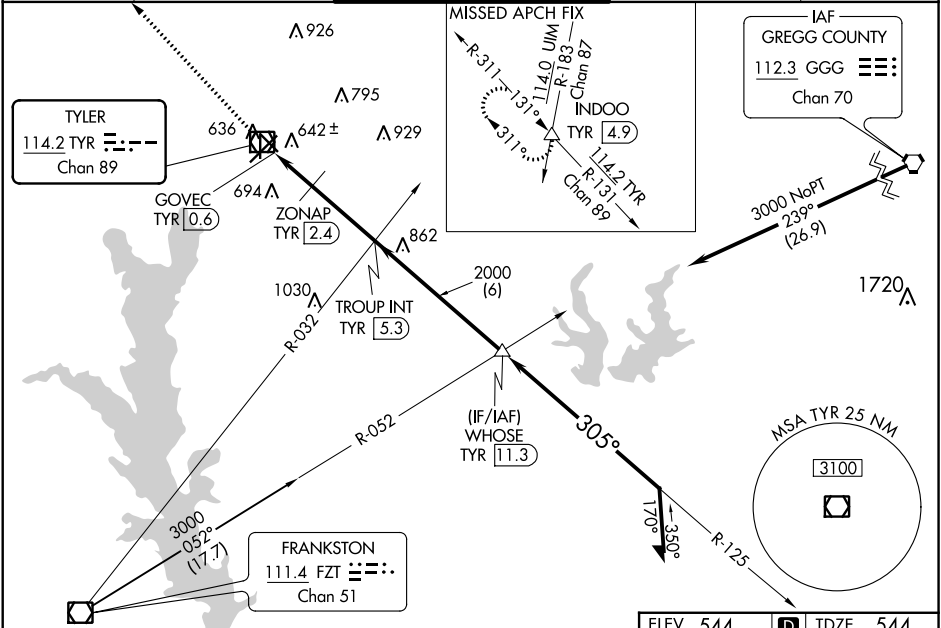
VOR/DME TYR	APP CRS	Rwy Idg	5200
114.2	305°	TDZE	544
Chan 89		Apt Elev	544

VOR RWY 31
TYLER POUNDS RGNL (TYR)

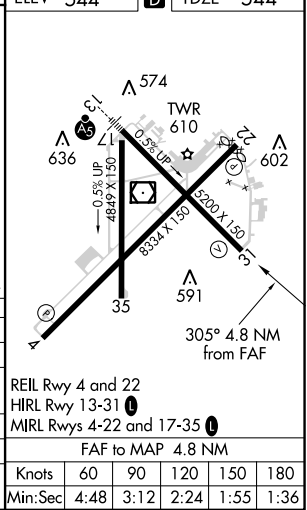
▼ Helicopter visibility reduction below 3/4 SM NA. VDP NA with Longview altimeter setting.
▲ When local altimeter setting not received, use Longview altimeter setting and increase all MDA 120 feet; increase all Cats C/D visibilities 3/8 mile. For inop ODALS, increase S-31 Cat D visibility to 1% and increase ZONAP Fix Minimums S-31 Cat D visibility to 1%. For inop ODALS when using Longview altimeter setting, increase S-31 Cats C/D visibilities to 1% and increase ZONAP Fix Minimums S-31 Cats C/D visibilities to 1%.

MISSED APPROACH:
Climb to 2200 on TYR
VOR/DME R-311 to
INDOO LOM INT/
4.9 DME and hold.

ATIS	LONGVIEW APP CON ★	POUNDS TOWER ★	GND CON	UNICOM
126.25	128.75 379.15	120.1 (CTAF) 0 257.8	121.9	122.95



CATEGORY	A	B	C	D
S-31	1100-3/4	556 (600-3/4)	1100-1 3/8	556 (600-1 3/8)
CIRCLING	1100-1	556 (600-1)	1100-1 3/8	556 (600-1 3/8)
ZONAP FIX MINIMUMS (DME REQUIRED)				
S-31	1000-3/4	456 (500-3/4)	1000-1 1/8	456 (500-1 1/8)
CIRCLING	1000-1	456 (500-1)	1000-1 1/2	456 (500-1 1/2)



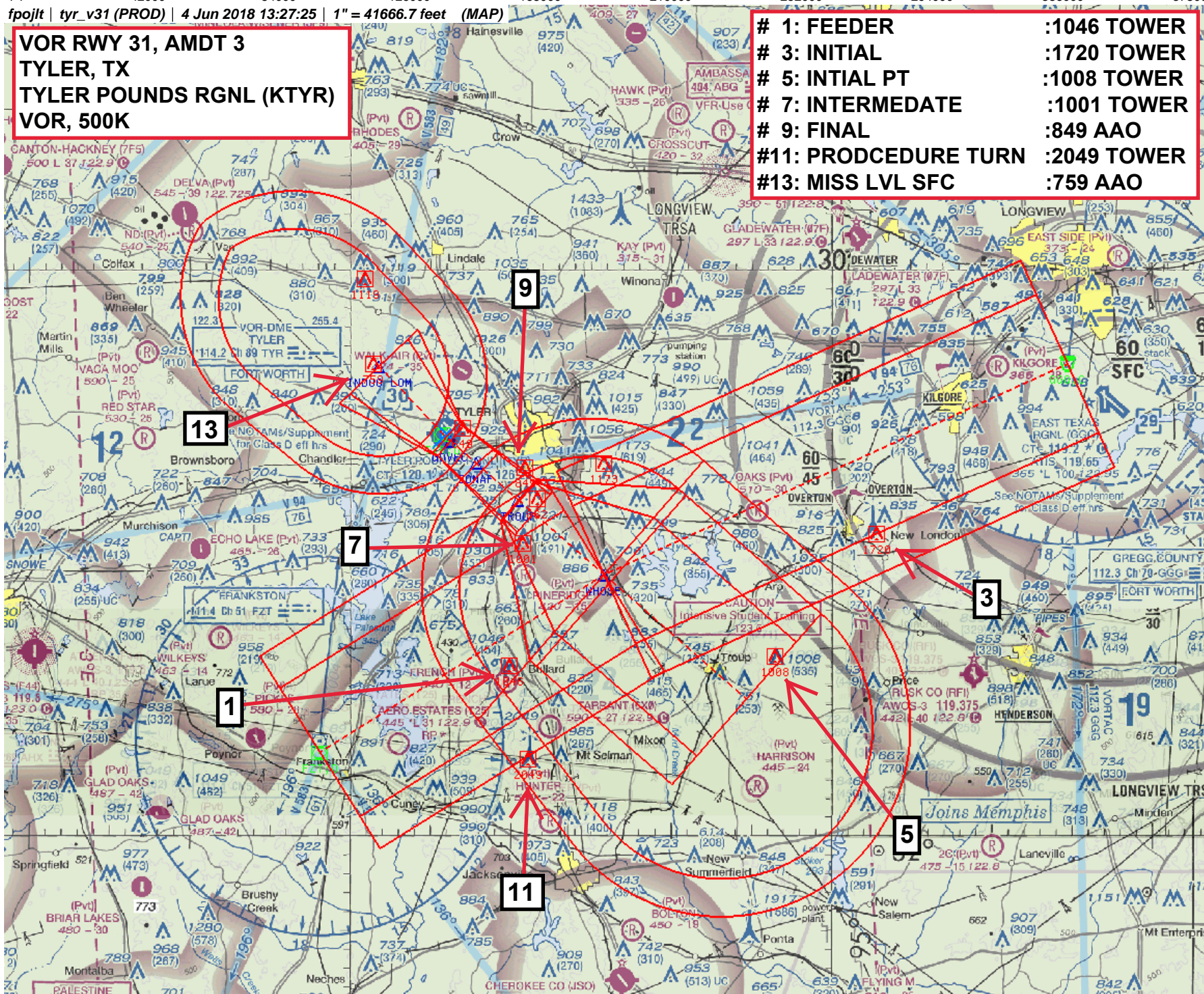
TYLER, TEXAS
Amdt 2A 02APR15

32°21'N-95°24'W

TYLER POUNDS RGNL (TYR)
VOR RWY 31

VOR RWY 31, AMDT 3
TYLER, TX
TYLER POUNDS RGNL (KTYR)
VOR, 500K

- | | |
|----------------------|-------------|
| # 1: FEEDER | :1046 TOWER |
| # 3: INITIAL | :1720 TOWER |
| # 5: INITIAL PT | :1008 TOWER |
| # 7: INTERMEDIATE | :1001 TOWER |
| # 9: FINAL | :849 AAO |
| #11: PRODCEDURE TURN | :2049 TOWER |
| #13: MISS LVL SFC | :759 AAO |



fpojlt | tyr_v31 (PROD) | 4 Jun 2018 13:13:44 | 1" = 8333.3 feet (MAP)

# 9: FINAL	:680 AAO
#10: STEPDOWN	:649 TREE
#13: MISS LVL SFC	: 759 AAO
#14: CIRC CAT A	:669 TOWER
#15: CIRC CAT B	:710 TOWER
#16: CIRC CAT C	:795 TOWER
#17: CIRC CAT D	:926 TOWER

