

Flight Procedure Tracking Form		Action: AMENDMENT	Task Type: IAP	Date Open: 12/23/2015	Task #: 2015122328515301001	Request #: 20151223285153
Procedure: APPROACH GPS RWY 31 AMDT 1D			Airport ID: KPAO	Airport: PALO ALTO		Reimbursable #: NO
City: PALO ALTO	ST: CA	GPS #:	Estimated Chart Date: 05/26/2016			FICO #:
Fac ID: N/A		Fac. Type:			Specialist: BRYAN BLUE	
Procedure Review						
	Rec'd	Rel'd	Full Name	Comments		
Lead:						
QA:						
Liaison:						
Procedure Comments:			ENROUTE-NON	Remark Type: INFORMATION		
P-NOTAM <i>Request Flight Check Tabletop</i> CONTACT: ALAN WILL/JOHNNIE BAKER, 405.954.4576/5148 5/1134						

[Print](#)

Project Name: PAO (PALO ALTO, CA)

Project Reason: PAO UTILITY POLE 274 MSL 372306.75N/1220410.12W (2015-AWP-6844-OE, 1A AC). THIS PROCEDURE IS SET FOR CANCELLATION HOWEVER ITS NOT SCHEDULED UNTIL 2020. P-NOTAM DEVELOPED FOR THE CURRENT GPS RWY 31

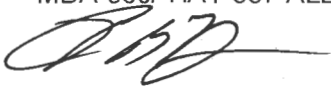
Last Updated By: Bryan Blue

Last Updated At: 2016-01-04 22:33:25.170292

Status: Verified

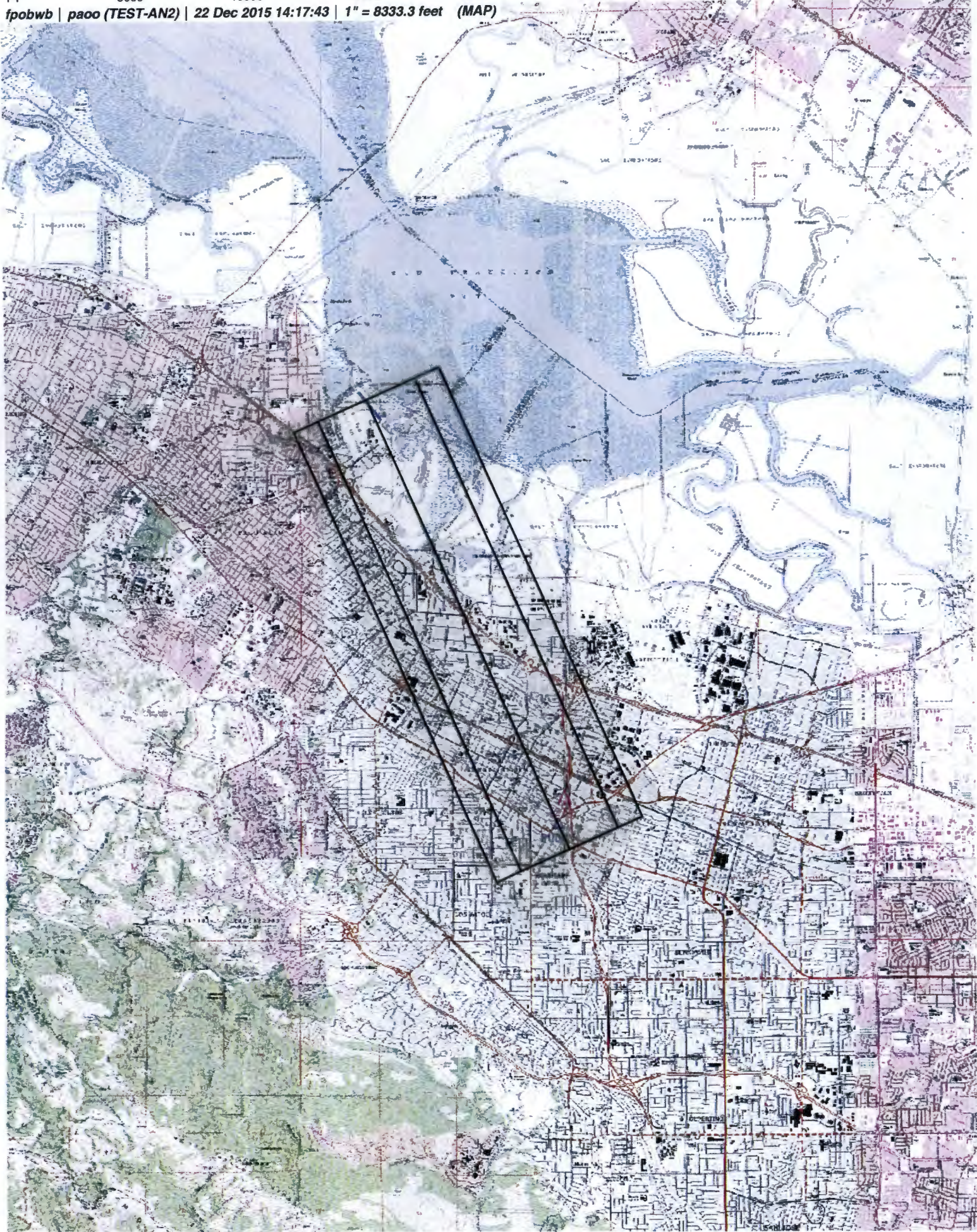
6/11/34

IFDC X/XXXX PAO IAP PALO ALTO, PALO ALTO, CA. GPS RWY 31, AMDT 1C... S-31 MDA 540/ HAT 537 ALL CATS. CIRCLING MDA 540/ HAT 537 ALL CATS. CHART FAS OBST: 274 POLE 372307N/1220410W. NORMAN Y MINETA SAN JOSE INTL ALTIMETER SETTING MINIMUMS: S-31 MDA 560/ HAT 557 ALL CATS. CIRCLING MDA 560/ HAT 557 ALL CATS. THIS IS GPS RWY 31, AMDT 1D. 1601042233-PERM



NM 1 2 3 4 5 6 7 8 9 10
FT 8000 16000 24000 32000 40000 48000 56000 64000

fpobwb | paoo (TEST-AN2) | 22 Dec 2015 14:17:43 | 1" = 8333.3 feet (MAP)



NM
FT 1 2 3 4 5 6 7 8 9 10
8000 16000 24000 32000 40000 48000 56000 64000

fpobwb | pao (TEST-AN2) | 28 Dec 2015 12:59:12 | 1" = 8333.3 feet (MAP)



PALO ALTO, CALIFORNIA

AL-9216 (FAA)

15288

APP CRS
322°

Rwy Idg **2443**
TDZE **3**
Apt Elev **3**

GPS RWY 31
PALO ALTO (PAO)



When control tower closed, use Norman Y Mineta
San Jose Intl altimeter setting.
Circling not authorized southwest of Rwy 13-31.

MISSED APPROACH: Climb to 1000 then climbing right
turn to 3000 direct SJC VOR/DME and hold.

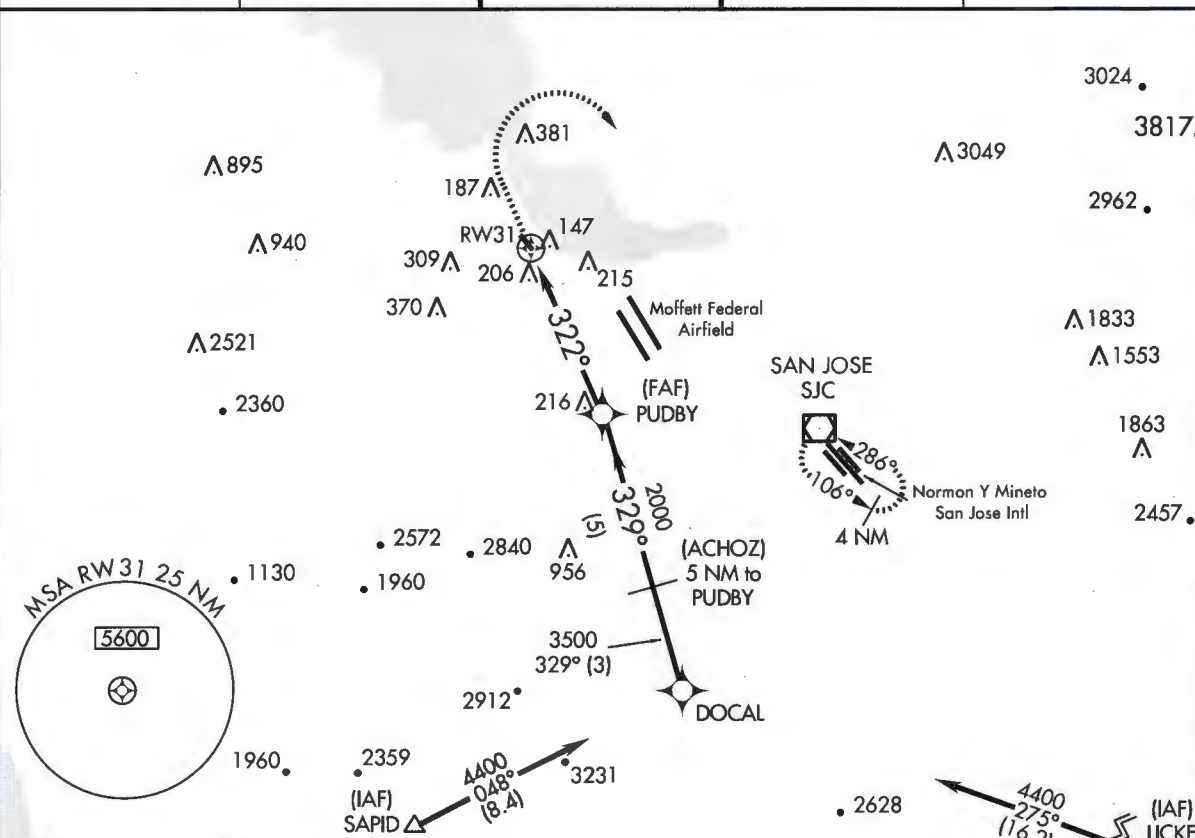
ATIS
135.275

NORCAL APP CON
121.3 270.35

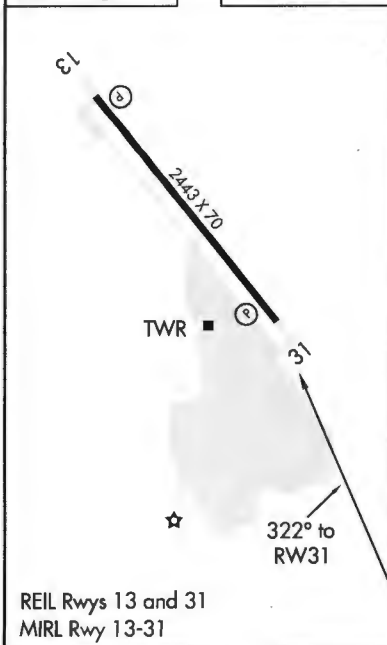
PALO ALTO TOWER*
118.6 (CTAF)





GND CON
125.0

UNICOM
122.95



ELEV 3 TDZE 3



1000		3000		SJC		VGS and descent angles not coincident (VGS Angle 4.00/TCH 29).		DOCAL	
									
		RW31		322°		3.68° TCH 45		PUDBY	
		5 NM		5 NM		3 NM		4400	
		2000		3500		329°			
CATEGORY		A		B		C		D	
S-31		460-1 457 (500-1)						NA	
CIRCLING		460-1 457 (500-1)		500-1 497 (500-1)				NA	
NORMAN Y MINETA SAN JOSE INTL ALTIMETER SETTING MINIMUMS									
S-31		500-1 497 (500-1)						NA	
CIRCLING		500-1 497 (500-1)		520-1 517 (600-1)				NA	

PALO ALTO, CALIFORNIA
Amdt 1C 15OCT15

37°28'N-122°07'W

PALO ALTO (PAO)
GPS RWY 31

SW-2, 10 DEC 2015 to 07 JAN 2016

SW-2, 10 DEC 2015 to 07 JAN 2016