

<b>Flight Procedure Tracking Form</b>		<b>Action:</b> FLIGHT CHECK	<b>Task Type:</b> IAP	<b>Date Open:</b> 12/22/2015	<b>Task #:</b> 2015122233200301001	<b>Request #:</b> 20151222332003
<b>Procedure:</b> APPROACH VOR RWY 32 AMDT 14A			<b>Airport ID:</b> KSSF	<b>Airport:</b> STINSON MUNI	<b>Reimbursable #:</b> NO	
<b>City:</b> SAN ANTONIO	<b>ST:</b> TX	<b>GPS #:</b>	<b>Estimated Chart Date:</b> 04/28/2016			<b>FICO #:</b>
<b>Fac ID:</b> N/A		<b>Fac. Type:</b>		<b>Specialist:</b>		
<b>Procedure Review</b>						
	<b>Rec'd</b>	<b>Rel'd</b>	<b>Full Name</b>	<b>Comments</b>		
<b>Lead:</b>						
<b>QA:</b>		1/11/16	<i>[Signature]</i>			
<b>Liaison:</b>						
<b>Procedure Comments:</b>			<b>Remark Type:</b> INFORMATION			
CONTACT PETE GETZ/JACOB POWERS: 405.954.4919/8702.						

[Print](#)

Project Name: SSF 20:1 PENETRATIONS (VOR RWY 32)

Project Reason: 20:1 PENS: RWY 09: KSSF0027 (12.42), KSSF0032 (9.69), KSSF0023 (7.62), KSSF0031 (7.47), KSSF0024 (4.52)...; RWY 14: KSSF0042 (10.60), KSSF0043 (11.67), KSSF0044 (9.04), KSSF0045 (3.96); RWY 32: KSSF0004 (10.13), KSSF0013 (9.98), KFFS0007 (8.80), KSSF0003 (7.77), KSSF0011 (6.17). CHANGES: 1. CHART NOTE: NIGHT LANDING: RWY 9, 14, 32 NA. 2. CHART NOTE: HELICOPTER VISIBILITY REDUCTION BELOW 1 SM NOT AUTHORIZED. REASONS: 1. 20:1 PENETRATIONS LISTED ABOVE. 2. IAW 8260.19F PARA 8-6-5.1.(3).

Last Updated By: George Trammell

Last Updated At: 2015-12-17 15:44:26.168727

Status: Verified

6/2340  
!FDC ~~XXXX~~ SSF IAP STINSON MUNI, SAN ANTONIO, TX. VOR RWY 32, AMDT 14... CHART NOTE: NIGHT LANDING: RWY 9, 14, 32 NA. CHART NOTE: HELICOPTER VISIBILITY REDUCTION BELOW 1 SM NOT AUTHORIZED. THIS IS VOR RWY 32, AMDT 14A. 1512171544-PERM

*[Handwritten signature]*  
1/11/16



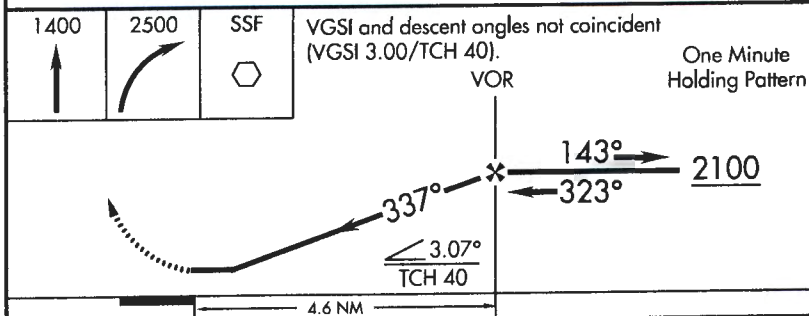
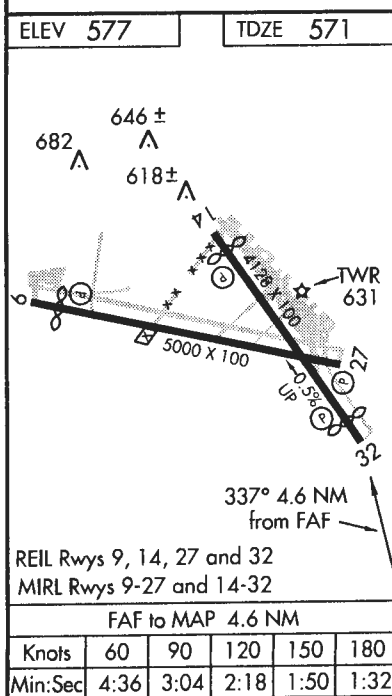
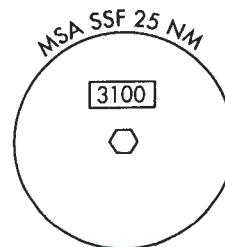
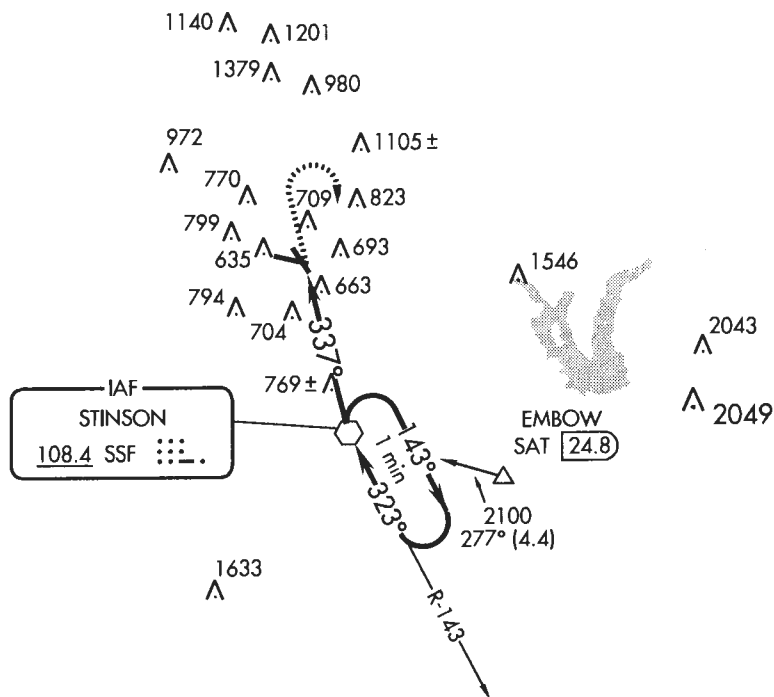
VOR SSF <b><u>108.4</u></b>	APP CRS <b>337°</b>	Rwy Idg <b>3756</b> TDZE <b>571</b> Apt Elev <b>577</b>
--------------------------------	------------------------	---

VOR RWY 32  
SAN ANTONIO/STINSON MUNI (SSF)

**T** When local altimeter setting not received, use San Antonio Intl altimeter setting and increase all MDAs 60 feet, and S-32 Cat C visibility  $\frac{1}{4}$  mile.

**MISSED APPROACH:** Climb to 1400 then climbing right turn to 2500 direct SSF VOR and hold.

ATIS	SAN ANTONIO APP CON	STINSON TOWER*	GND CON	CLNC DEL	UNICOM
128.8	125.7 290.225	118.2 (CTAF) 0 379.9	121.7 379.9	121.7	122.95



CATEGORY	A	B	C	D
S-32	1020-1 449 (500-1)		1020-1¼ 449 (500-1¼)	NA
CIRCLING	1040-1 463 (500-1)	1100-1 523 (600-1)	1100-1½ 523 (600-1½)	NA

**SC-3, 10 DEC 2015 to 07 JAN 2016**

**SC-3, 10 DEC 2015 to 07 JAN 2016**