

Flight Procedure Tracking Form		Action: AMENDMENT	Task Type: IAP	Date Open: 12/18/2015	Task #: 2015121827451401002	Request #: 20151218274514
Procedure: APPROACH VOR/DME RWY 16 AMDT 10A			Airport ID: KBDN	Airport: BEND MUNI		Reimbursable #: NO
City: BEND	ST: OR	GPS #:	Estimated Chart Date: 05/26/2016			FICO #:
Fac ID: N/A		Fac. Type:		Specialist: VICTOR NASO		
Procedure Review						
	Rec'd	Rel'd	Full Name	Comments		
Lead:						
QA:		1/13/16	<i>[Signature]</i>	13 Dec 15		
Liaison:						
Procedure Comments:			Remark Type: INFORMATION			
P-NOTAM THRE TO TDZE REQUEST FLIGHT CHECK TABLETOP CONTACTS: JOHNNIE BAKER/ALLEN WILL 405.954.5148/6103 6/4352						

[Print](#)

Project Name: BDN BEND MUNI BEND OR CHANGING THRE TO TDZE

Project Reason: TEAM3 - CHANGING THRE TO TDZE

Last Updated By: Victor Naso

Last Updated At: 2015-12-18 15:11:14.96318

Status: Verified

6/4352

!FDC X/XXXX BDN IAP BEND MUNI, BEND, OR. VOR/DME RWY 16, AMDT 10... DELETE THRE 3403 CHART TDZE 3432. S-16 HAT 408 ALL CATS.. DELETE NOTE: RWY 16 STRAIGHT-IN AND CIRCLING MINIMUMS NA AT NIGHT.. CHART NOTE: NIGHT LANDING: RWY 16 NA. THIS IS VOR/DME RWY 16, AMDT 10A. 1512181511-PERM

[Signature]

[Signature]
1/13/16

QUALITY
1
CHECKED

Delete Note: Rwy 16 Straight-in AND Circling Minimums NA At Night.

Chart notes NIGHT LANDING: Rwy 16 NA

BEND, OREGON

AL-5579 (FAA)

15288

VORTAC DSD
117.6
Chan **123**

APP CRS
136°

Rwy Idg **5200**
THRE **3403**
Apt Elev **3460**

TOZE 3432

VOR/DME RWY 16
BEND MUNI (BDN)

⚠ When local altimeter setting not received, use Redmond altimeter setting and increase all MDAs 80 feet, increase S-16 Cat C/D visibility 1/8 mile, and Circling Cat C visibility 1/4 mile. Helicopter visibility reduction below 1 SM not authorized. **Rwy 16 Straight-in and Circling minimums NA at night.**

❄ -22°C/-8°F

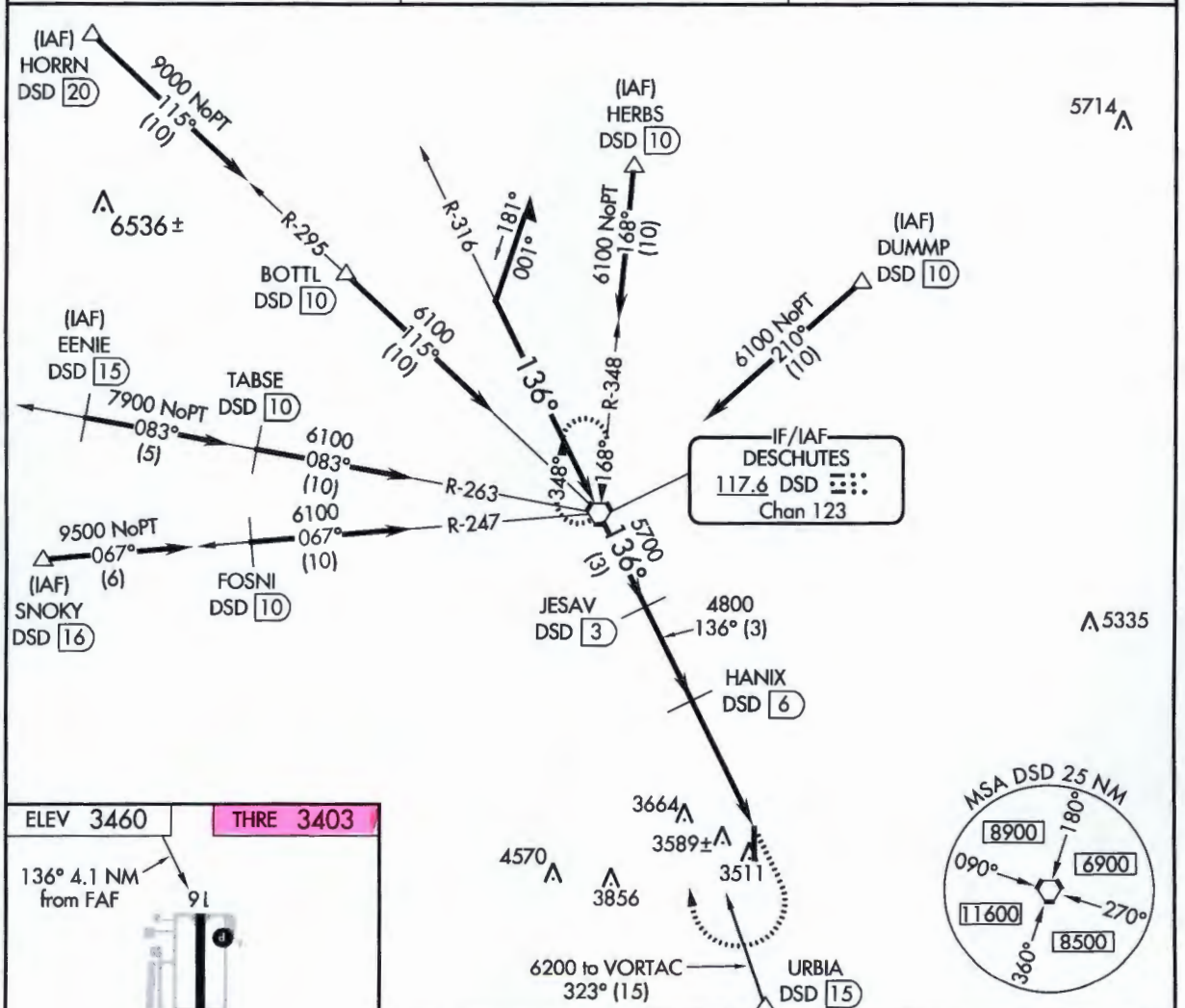
MISSED APPROACH: Climb to 4700 then climbing right turn to 7000 direct DSD VORTAC and hold.

5-16
3840
-3432
408

AWOS-3 **134.425**

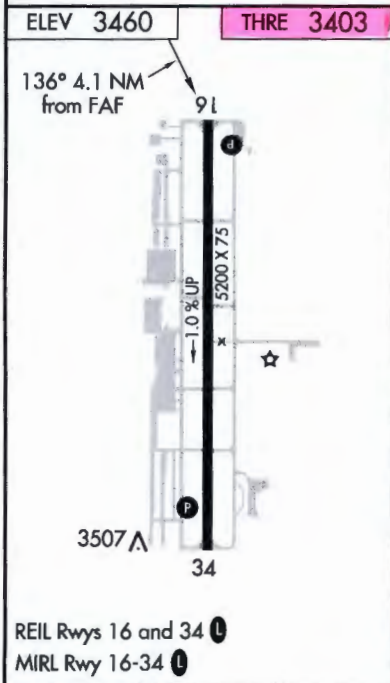
SEATTLE CENTER **128.15 257.75**

UNICOM **123.0 (CTAF) 0**



NW-1, 07 JAN 2016 to 04 FEB 2016

NW-1, 07 JAN 2016 to 04 FEB 2016



Remain within 10 NM		DSD VORTAC		JESAV DSD 3		HANIX DSD 6		DSD 10.1	
6100		316°		6100		136°		5700	
6100		136°		6100		136°		4800	
VGS and descent angles not coincident (VGS Angle 3.00/TCH 39).		3 NM		3 NM		4.1 NM		3.09° TCH 50	
CATEGORY	A	B	C	D					
S-16	3840-1	437 (400-1)	3840-1¼	437 (400-1¼)					
CIRCLING	3940-1 480 (500-1)	4000-1 540 (600-1)	4120-1¾ 660 (700-1¾)	4640-3 1180 (1200-3)					

BEND, OREGON

Amdt 10 26JUN14

44°06'N-121°12'W

BEND MUNI (BDN)
VOR/DME RWY 16