

<b>Flight Procedure Tracking Form</b>		<b>Action:</b> AMENDMENT	<b>Task Type:</b> IAP	<b>Date Open:</b> 12/18/2015	<b>Task #:</b> 2015121826338501001	<b>Request #:</b> 20151218263385
<b>Procedure:</b> APPROACH RNAV (GPS) RWY 2 ORIG-D			<b>Airport ID:</b> K65S	<b>Airport:</b> BOUNDARY COUNTY		<b>Reimbursable #:</b> NO
<b>City:</b> BONNERS FERRY	<b>ST:</b> ID	<b>GPS #:</b>		<b>Estimated Chart Date:</b> 05/26/2016		<b>FICO #:</b>
<b>Fac ID:</b> N/A		<b>Fac. Type:</b>			<b>Specialist:</b> VICTOR NASO	
<b>Procedure Review</b>						
	<b>Rec'd</b>	<b>Rel'd</b>	<b>Full Name</b>	<b>Comments</b>		
<b>Lead:</b>						
<b>QA:</b>						
<b>Liaison:</b>						
<b>Procedure Comments:</b>			ENROUTE-NON	<b>Remark Type:</b> INFORMATION		
P-NOTAM REQUEST FLIGHT CHECK TABLETOP CONTACTS: JOHNNIE BAKER/ALLEN WILL 405.954.5148/6103 5/9411						

[Print](#)

Project Name: 65S RNAV (GPS) RWY 2 HELICOPTER NOTE

Project Reason: 34:1 PENETRATIONS FOR RWY 2. TREE (16-020366) 2399 MSL, 484302.38N/1161819.81W AND TREE (16-020367) 2403 MSL, 484302.31N/1161823.31W.

Last Updated By: Steven Barnett

Last Updated At: 2015-12-17 13:33:46.285039

Status: Verified

5/9/11

!FDC X/XXXX 65S IAP BOUNDARY COUNTY, BONNERS FERRY, ID. RNAV (GPS) RWY 2, ORIG-C... CHART  
NOTE: HELICOPTER VISIBILITY REDUCTION BELOW 3/4 SM NOT AUTHORIZED. THIS IS RNAV (GPS) RWY  
2, ORIG-D. 1512171333-PERM



BONNERS FERRY, IDAHO

AL-9976 (FAA)

15344

APP CRS	Rwy Idg	4002
008°	TDZE	2330
	Apt Elev	2337

# **RNAV (GPS) RWY 2** BOUNDARY COUNTY (65S)

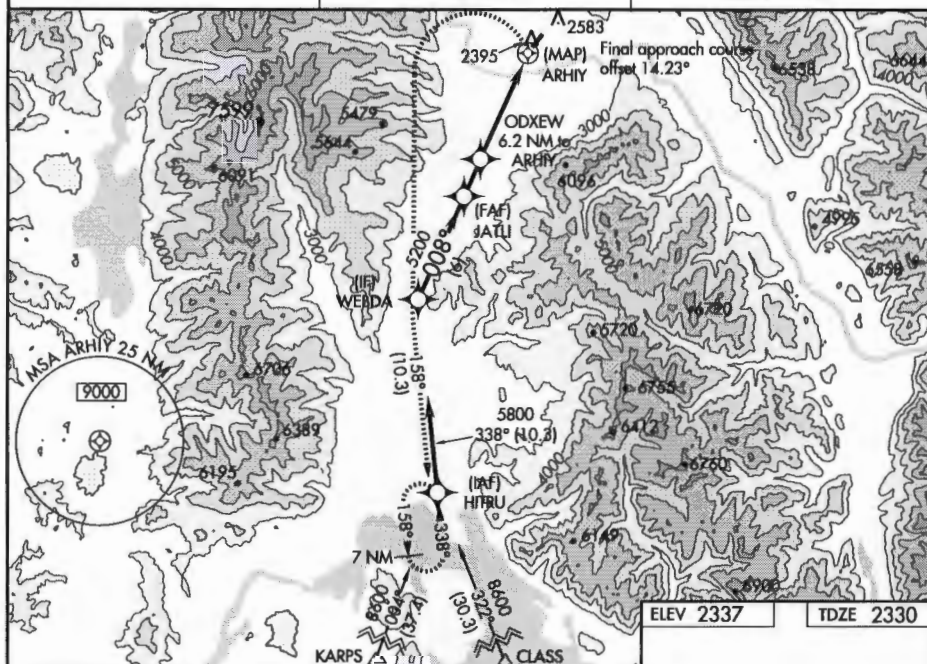
**NA**  
 -8°C/18°F  
 When local altimeter setting not received, procedure NA.  
 DME/DME RNP-0.3 NA.  
 \* Missed approach requires minimum climb of 400 feet per NM to 6600.  
 # Missed approach requires minimum climb of 300 feet per NM to 6400.

**MISSED APPROACH:** Climbing left turn to 8600 direct WEBDA and on track 158° to HITRU and hold, continue climb-in-hold to 8600. When authorized by ATC, continue climb-in-hold to MEA for route of flight.

AWOS-3PT  
132.575

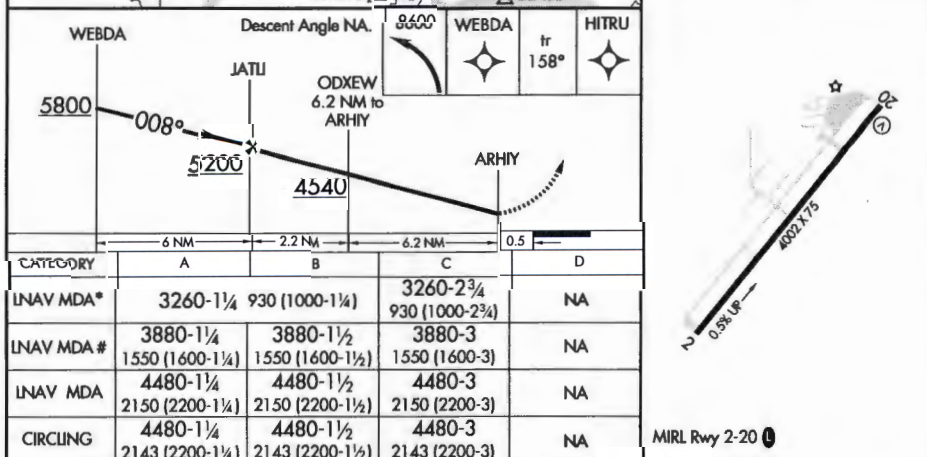
SEATTLE CENTER  
123.95 290.55

UNICOM  
123.0 (CTAF) 0



NW-1, 10 DEC 2015 to 07 JAN 2016

NW-1, 10 DEC 2015 to 07 JAN 2016



BONNERS FERRY, IDAHO  
Orig-C 29MAY14

48°44'N-116°18'W

BOUNDARY COUNTY (65S)  
**RNAV (GPS) RWY 2**