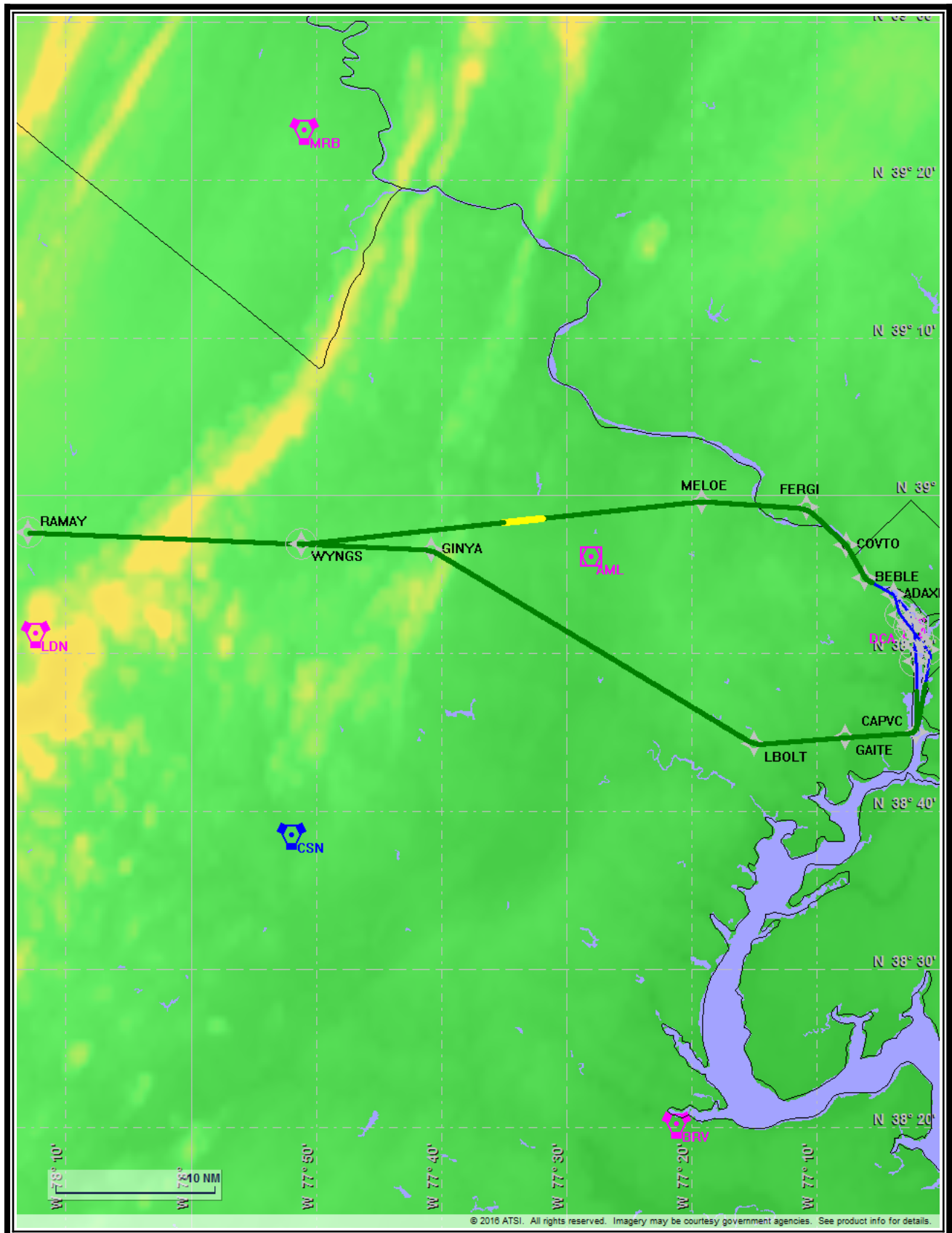


Name: MARK SCHOENHOFF
Project Name: KDCA WYNGS4 SID
Output File: KDCA WYNGS4 SID RW01
 RAMAY 20160113_1309
Procedure Name: WYNGS4
Software: RNAV-Pro™
Version: 2.39g
Date/Time: 1/13/2016 1:10:32 PM
Input File: [KDCA WYNGS4 SID RW01
 RAMAY 20160113_1222.txt](#)
Databases: AIRNAV Date: 11/30/2015
 CIPF Date: 9/18/2015
 DTED® (MAX) Date: 2002

Results Summary:

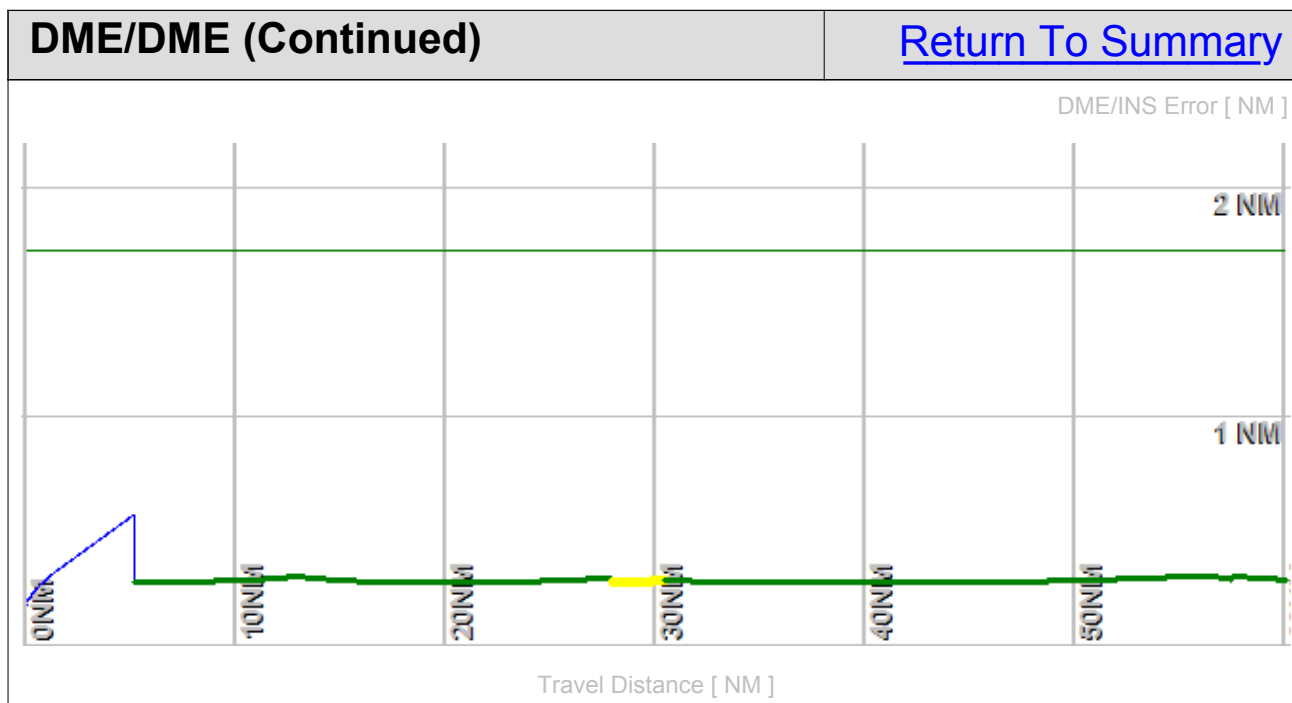
Flyability	✓	Please Check Flyability Results
DME/DME	✓	No Critical DMEs Exist
Radars	?	
Comms	?	
TERPS	?	



Flight Plan					Return To Summary		
Name	Type	Lat/Lon	Alt [ft]	VNAV Mode	IAS [Kts]	Turn Type	Leg Type
RW01(A...	WP	N 38° 50' 29.65" W 77° 2' 12.29"	11.4	VNAV	0.0	Fly By	TF
RW19(D...	WP	N 38° 51' 40.29" W 77° 2' 19.41"	47.1	VNAV	130.0	Fly Over	VI
GH01:	WP	N 38° 52' 16.73" W 77° 2' 23.08"	515.0	VNAV	220.0	Fly By	CF - 321.5°
ADAXE	WP	N 38° 53' 42.54" W 77° 3' 50.44"	900.0	VNAV	220.0	Fly By	TF
BEBLE	WP	N 38° 54' 43.48" W 77° 6' 8.35"	1300.0	VNAV	250.0	Fly By	TF
COVTO	WP	N 38° 56' 49.58" W 77° 7' 39.16"	1700.0	VNAV	250.0	Fly By	TF
FERGI	WP	N 38° 59' 12.16" W 77° 10' 50.18"	2400.0	VNAV	250.0	Fly By	TF
MELOE	WP	N 38° 59' 37.28" W 77° 19' 8.69"	3700.0	VNAV	250.0	Fly By	TF
WYNGS	WP	N 38° 56' 55.04" W 77° 51' 7.02"	8700.0	VNAV	250.0	Fly By	TF
RAMAY	WP	N 38° 57' 38.57" W 78° 12' 59.01"	12000.0	VNAV	250.0	Fly Over	TF
Climb Gradient: 825.0 ft/NM up to 515.0 ft MSL							

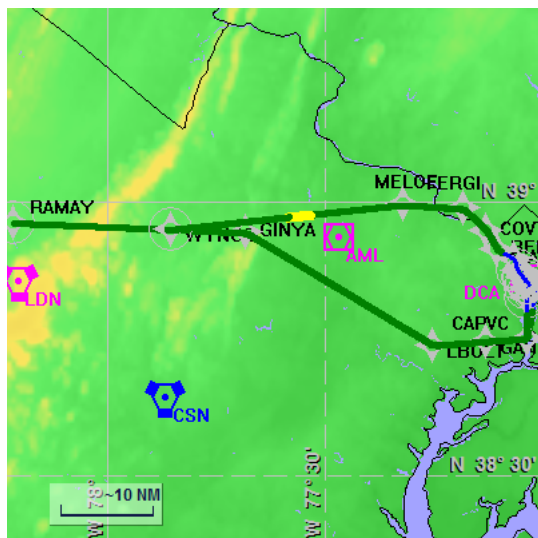
Flyability		Return To Summary
Settings:	Flight Type: Runway Departure Selected Airport: KDCA Aircraft Category: Cat D Climb Gradient: 825.0 ft/NM up to 515.0 ft MSL Ground Speeds: Departure: 120.0 Kts out to 10.0 NM Table: 200.0 Kts up to 11000.0 ft 240.0 Kts up to 18000.0 ft 260.0 Kts up to 24000.0 ft 340.0 Kts up to 99900.0 ft Wind Settings: <i>None assigned</i> Descent During a Turn: Allowed VNAV Mode: Flight Plan	
	Flight Track comes into contact with terrain. Minimum AGL along route was -60.78 Ft. Flight Track contacted terrain (DTED 0 MAX) between AER and DER or within 2/3 NM of DER.	

DME/DME		Return To Summary
Settings:	RNP: 2.0 Flight Mode: Manual Line of Sight (DTED Level 0 Max): Evaluated DME Restrictions: Evaluated Inertial Drift: Enabled Initial Drift: 0.165 NM INS Drift Rate: 8.000 NM/Hour Range Mode: OSV Co-Frequencies: Evaluated RNP Edges: Evaluated Min DME Range: 3.0 NM Allowed Gap Length: 4.0 NM DME Types: VOR/DME, VORTAC, Standalone, and User DME Include Angles: 30 to 150 Critical DMEs: Allowed DoD Facilities: Not included Foreign Facilities: Not included Low DMEs: Included Terminal DMEs: Included Flight Check DMEs: Selected Higher Altitudes: Evaluated Near Maximum Altitude: Evaluated Minimum MSL DMEs Avail: 1205 ft	
Total Number of DMEs Used: 8 Maximum DME Error: 0.574 NM. No Critical DMEs were found. Available DMEs: OTT, BAL, DCA, EMI, AML, CSN, LDN, MRB		



DME/DME (Continued)						Return To Summary			
DMEs Used									
#	Name	Lat/Lon/MAGVAR	Range	Source	Critical	Err. [NM]	Status	Time	Distance
1	BAL	N 39° 10' 15.83" W 76° 39' 40.52" 11 W	L	Database	NO	0.927	Enabled	17.9%	12.9%
2	DCA	N 38° 51' 34.03" W 77° 2' 11.17" 09 W	L	Database	NO	0.745	Enabled	26.7%	22.8%
3	EMI	N 39° 29' 42.03" W 76° 58' 42.86" 08 W	H	Database	NO	0.574	Enabled	12.5%	14.2%
4	OTT	N 38° 42' 21.14" W 76° 44' 41.09" 10 W	L	Database	NO	0.574	Enabled	8.8%	10.1%
5	CSN	N 38° 38' 28.33" W 77° 51' 55.80" 06 W	H	Database	NO	0.574	Enabled	23.4%	27.7%
6	MRB	N 39° 23' 8.06" W 77° 50' 54.08" 07 W	L	Database	NO	0.576	Enabled	41.9%	49.1%
7	LDN	N 38° 51' 15.81" W 78° 12' 20.00" 06 W	L	Database	NO	0.574	Enabled	13.6%	16.0%
8	AML	N 38° 56' 4.55" W 77° 28' 0.10" 08 W	L	Database	NO	0.609	Enabled	25.7%	30.1%
	Total Coverage							85.2%	91.4%
Flight Check DME Selection									
Distance [NM]		Selected DMEs						Alternate	
0.0									
1.2									
1.6		OTT							
3.4		OTT	BAL	DCA					
5.4		EMI	BAL	DCA					
7.9		EMI	BAL	DCA					
10.9		EMI	OTT	BAL	DCA	AML		CSN	
17.6		EMI	OTT	LDN	CSN	MRB		DCA	
27.6		DCA	AML	LDN	CSN	MRB			
42.7		DCA	AML	LDN	CSN	MRB			
Inertial Drift Segments									
#	Start Location			End Location			Length [NM]		

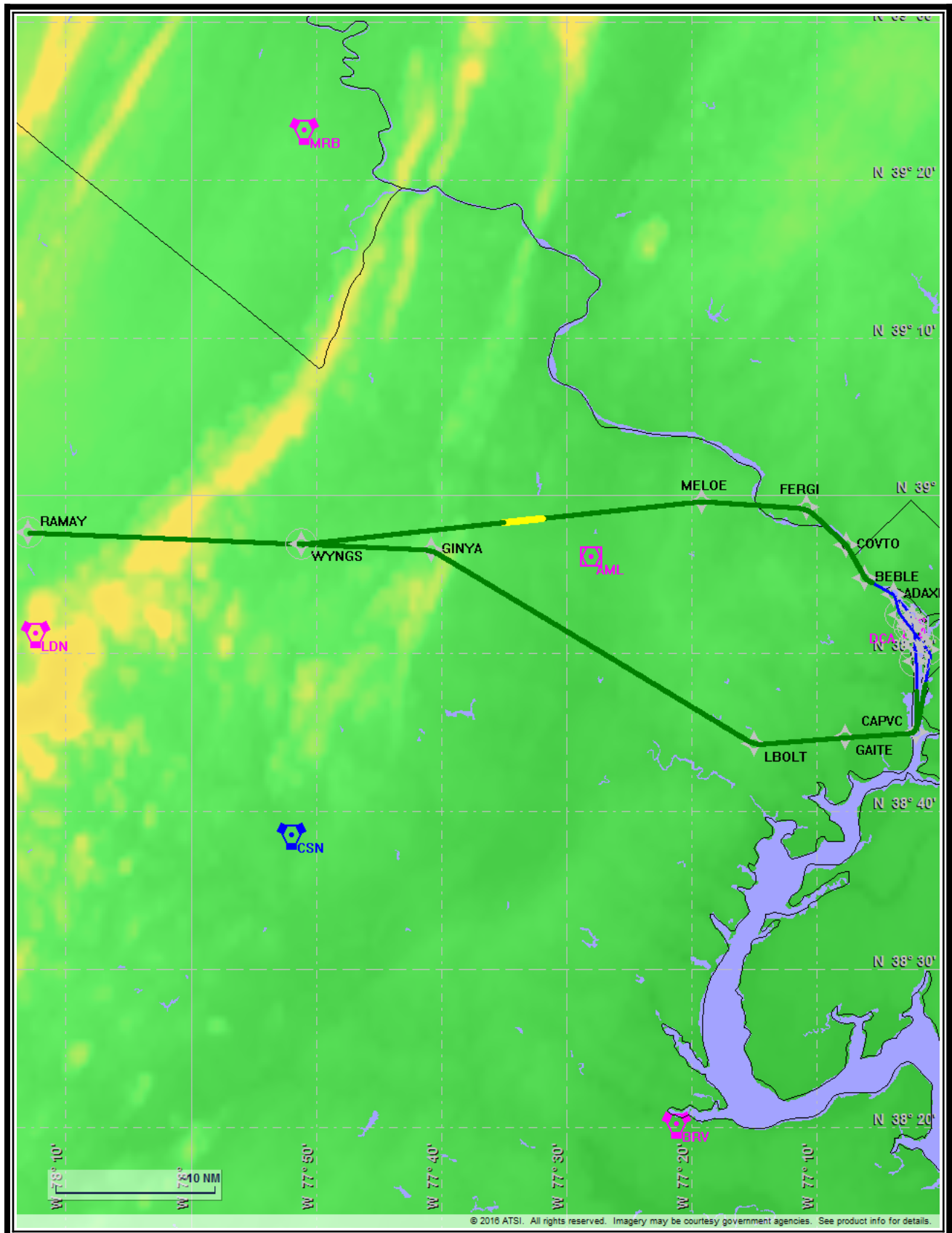
Available DMEs by Waypoints		Return To Summary
Waypoint Before	Waypoint After	DME List
RW01(AER)	RW19(DER)	
RW19(DER)	GH01:	
GH01:	ADAXE	OTT
ADAXE	BEBLE	BAL, DCA, and OTT
BEBLE	COVTO	BAL, DCA, and EMI
COVTO	FERGI	BAL, DCA, and EMI
FERGI	MELOE	AML, BAL, DCA, EMI, OTT, and CSN*
MELOE	WYNGS	AML, CSN, DCA, EMI, LDN, MRB, OTT, and BAL*
WYNGS	RAMAY	AML, CSN, DCA, LDN, and MRB



Name: MARK SCHOENHOFF
Project Name: KDCA WYNGS4 SID
Output File: KDCA WYNGS4 SID RW15 WYNGS 20160113_1309
Procedure Name: WYNGS4
Software: RNAV-Pro™
Version: 2.39g
Date/Time: 1/13/2016 1:11:04 PM
Input File: [KDCA WYNGS4 SID RW15 WYNGS 20160113_1225.txt](#)
Databases: AIRNAV Date: 11/30/2015
CIFP Date: 9/18/2015
DTED® (MAX) Date: 2002

Results Summary:

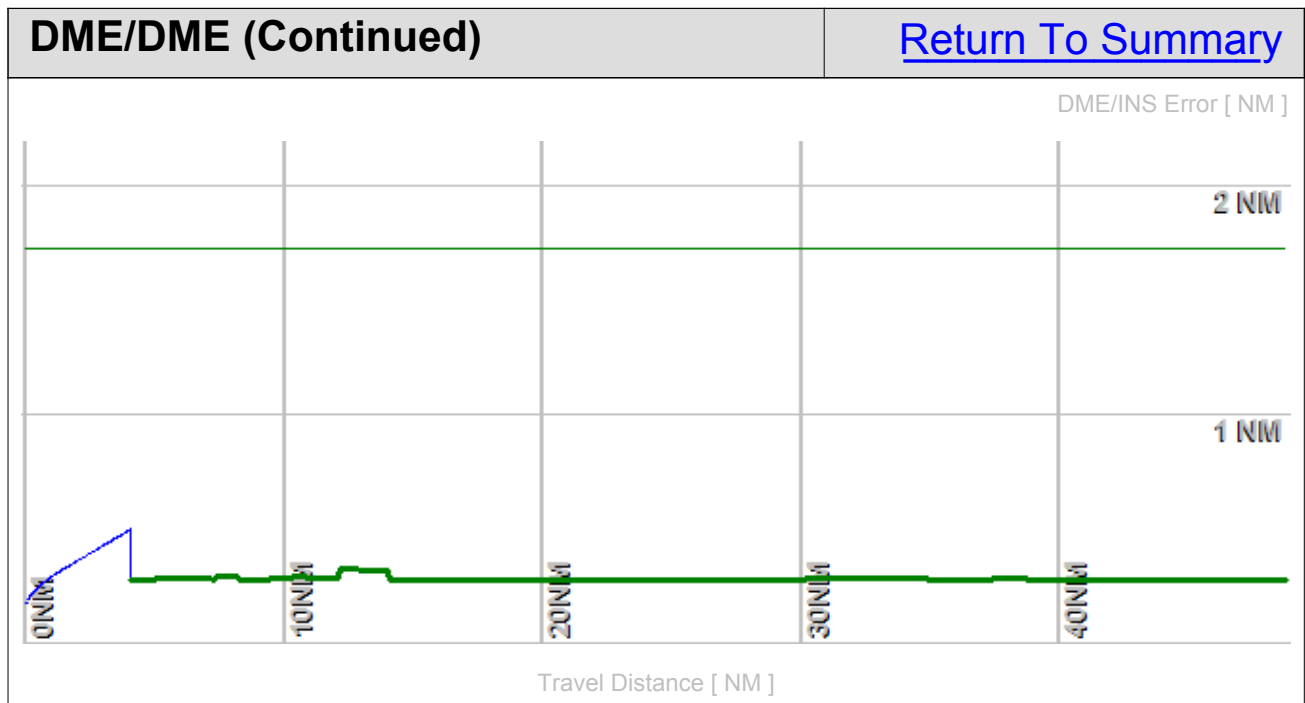
Flyability	✓	Please Check Flyability Results
DME/DME	✓	No Critical DMEs Exist
Radars	?	
Comms	?	
TERPS	?	



Flight Plan					Return To Summary		
Name	Type	Lat/Lon	Alt [ft]	VNAV Mode	IAS [Kts]	Turn Type	Leg Type
RW15(A...	WP	N 38° 51' 40.18" W 77° 2' 35.87"	14.0	VNAV	0.0	Fly Over	TF
RW33(D...	WP	N 38° 50' 59.29" W 77° 1' 55.95"	45.3	VNAV	130.0	Fly Over	VA
GH15:	WP	N 38° 50' 11.10" W 77° 1' 8.93"	515.0	VNAV	145.0	Fly Over	DF
CAPVC	WP	N 38° 44' 58.80" W 77° 2' 4.96"	1400.0	VNAV	180.0	Fly By	TF
GAITE	WP	N 38° 44' 40.12" W 77° 7' 44.97"	2300.0	VNAV	180.0	Fly By	TF
LBOLT	WP	N 38° 44' 13.13" W 77° 15' 1.42"	3400.0	VNAV	180.0	Fly By	TF
GINYA	WP	N 38° 56' 33.05" W 77° 40' 48.26"	8300.0	VNAV	180.0	Fly By	TF
WYNGS	WP	N 38° 56' 55.04" W 77° 51' 7.02"	8700.0	VNAV	180.0	Fly Over	TF
Climb Gradient: 500.0 ft/NM up to 515.0 ft MSL							

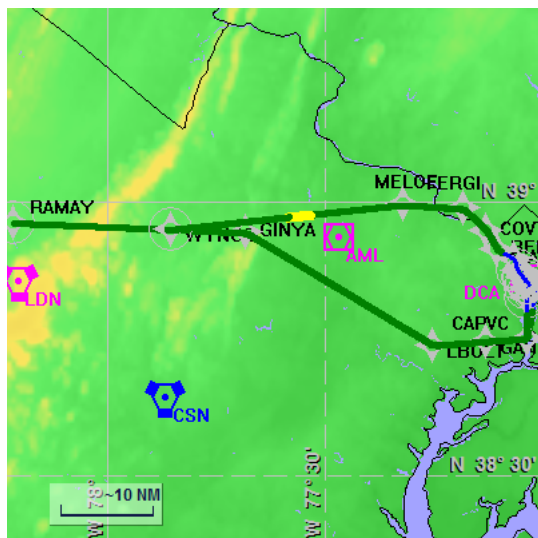
Flyability		Return To Summary
Settings:	Flight Type: Runway Departure	
	Selected Airport: KDCA	
	Aircraft Category: Cat D	
	Climb Gradient: 500.0 ft/NM up to 515.0 ft MSL	
	Ground Speeds:	
	Departure: 120.0 Kts out to 10.0 NM	
	Table:	
	200.0 Kts up to 11000.0 ft	
	240.0 Kts up to 18000.0 ft	
	260.0 Kts up to 24000.0 ft	
	340.0 Kts up to 99900.0 ft	
	Wind Settings: <i>None assigned</i>	
	Descent During a Turn: Allowed	
	VNAV Mode: Flight Plan	
Required IAS at Fly-By WP GAITE could not be reached with given A/C acceleration performance.		
Flight Track comes into contact with terrain. Minimum AGL along route was -84.43 Ft.		
Flight Track contacted terrain (DTED 0 MAX) between AER and DER or within 2/3 NM of DER.		

DME/DME		Return To Summary
Settings:	RNP: 2.0	
	Flight Mode: Manual	
	Line of Sight (DTED Level 0 Max): Evaluated	
	DME Restrictions: Evaluated	
	Inertial Drift: Enabled	
	Initial Drift: 0.165 NM	
	INS Drift Rate: 8.000 NM/Hour	
	Range Mode: OSV	
	Co-Frequencies: Evaluated	
	RNP Edges: Evaluated	
	Min DME Range: 3.0 NM	
	Allowed Gap Length: 4.0 NM	
	DME Types: VOR/DME, VORTAC, Standalone, and User	
	DME Include Angles: 30 to 150	
	Critical DMEs: Allowed	
DoD Facilities: Not included		
Foreign Facilities: Not included		
Low DMEs: Included		
Terminal DMEs: Included		
Flight Check DMEs: Selected		
Higher Altitudes: Evaluated		
Near Maximum Altitude: Evaluated		
Minimum MSL DMEs Avail: 879 ft		
Total Number of DMEs Used: 8		
Maximum DME Error: 0.501 NM.		
No Critical DMEs were found.		
Available DMEs: ADW, OTT, BRV, DCA, BAL, CSN, AML, LDN, MRB		



DME/DME (Continued)						Return To Summary			
DMEs Used									
#	Name	Lat/Lon/MAGVAR	Range	Source	Critical	Err. [NM]	Status	Time	Distance
1	BRV	N 38° 20' 10.53" W 77° 21' 10.32" 09 W	L	Database	NO	0.585	Enabled	43.6%	45.6%
2	OTT	N 38° 42' 21.14" W 76° 44' 41.09" 10 W	L	Database	NO	1.007	Enabled	32.0%	27.8%
3	DCA	N 38° 51' 34.03" W 77° 2' 11.17" 09 W	L	Database	NO	0.501	Enabled	25.0%	25.7%
4	CSN	N 38° 38' 28.33" W 77° 51' 55.80" 06 W	H	Database	NO	0.501	Enabled	15.3%	18.0%
5	AML	N 38° 56' 4.55" W 77° 28' 0.10" 08 W	L	Database	NO	0.501	Enabled	19.5%	23.4%
6	BAL	N 39° 10' 15.83" W 76° 39' 40.52" 11 W	L	Database	NO	0.501	Enabled	4.1%	4.9%
7	LDN	N 38° 51' 15.81" W 78° 12' 20.00" 06 W	L	Database	NO	0.501	Enabled	18.4%	22.0%
8	MRB	N 39° 23' 8.06" W 77° 50' 54.08" 07 W	L	Database	NO	0.501	Enabled	13.4%	16.1%
	Total Coverage							85.6%	91.7%
Flight Check DME Selection									
Distance [NM]		Selected DMEs						Alternate	
0.0									
0.9									
1.8		BRV	OTT	DCA	BAL	ADW			
6.7		BRV	OTT	DCA	BAL				
11.5		BRV	OTT	CSN	BAL	AML	DCA		
16.5		BRV	OTT	CSN	DCA	AML	LDN		
26.6		BRV	LDN	MRB	DCA	AML	CSN		
40.2		CSN	LDN	MRB	DCA	AML			
Inertial Drift Segments									
#	Start Location			End Location				Length [NM]	

Available DMEs by Waypoints		Return To Summary
Waypoint Before	Waypoint After	DME List
RW15(AER)	RW33(DER)	
RW33(DER)	GH15:	
GH15:	CAPVC	ADW, BAL, BRV, DCA, and OTT
CAPVC	GAITE	BAL, BRV, DCA, and OTT
GAITE	LBOLT	AML, BAL, BRV, CSN, OTT, and DCA*
LBOLT	GINYA	AML, BRV, CSN, DCA, LDN, MRB, OTT, and ADW*
GINYA	WYNGS	AML, CSN, DCA, LDN, and MRB



Name: MARK SCHOENHOFF
Project Name: KDCA WYNGS4 SID
Output File: KDCA WYNGS4 SID RW19 WYNGS 20160113_1309
Procedure Name: WYNGS4
Software: RNAV-Pro™
Version: 2.39g
Date/Time: 1/13/2016 1:11:36 PM
Input File: [KDCA WYNGS4 SID RW19 WYNGS 20160113_1226.txt](#)
Databases: AIRNAV Date: 11/30/2015
CIFP Date: 9/18/2015
DTED® (MAX) Date: 2002

Results Summary:

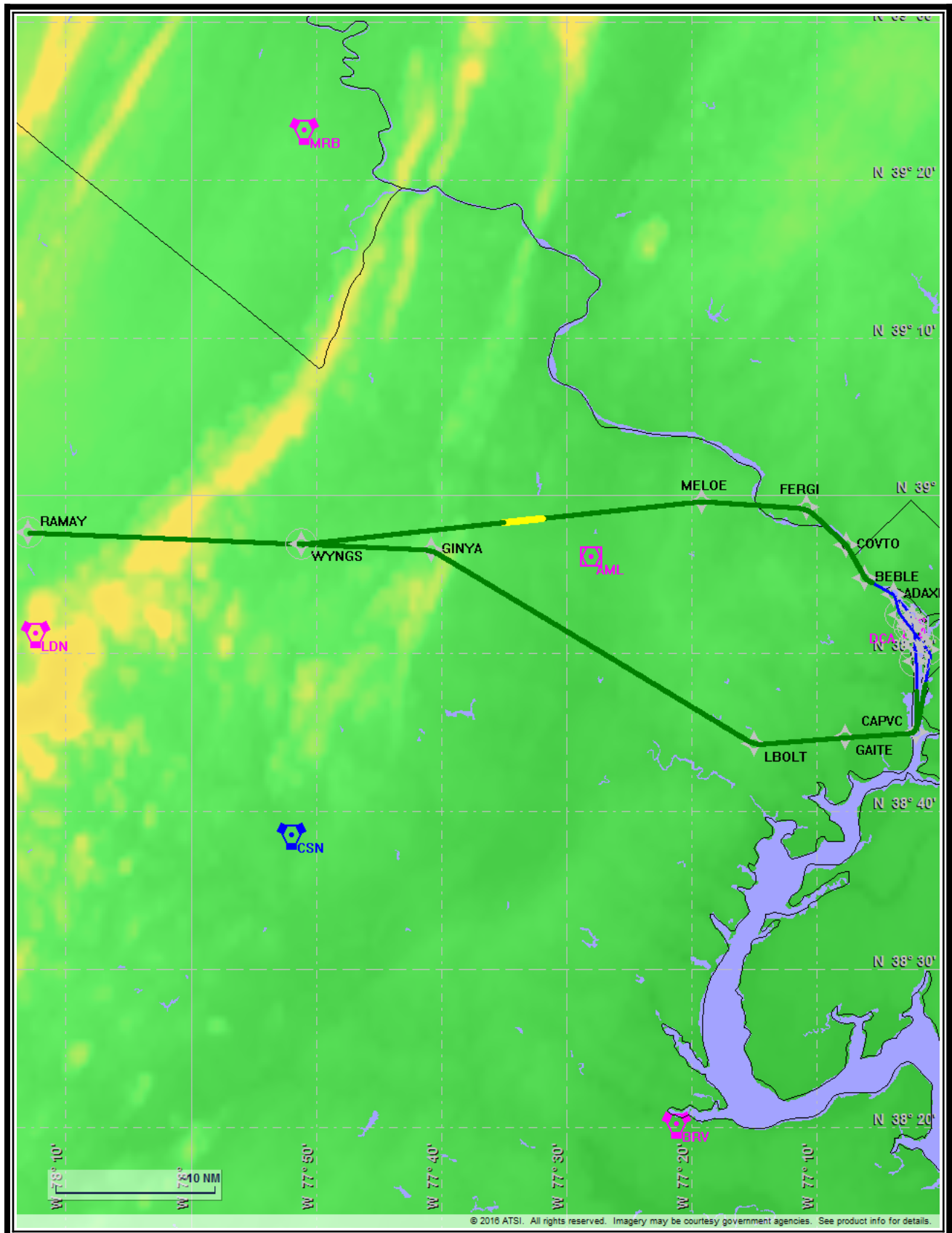
Flyability  **Please Check Flyability Results**

DME/DME  **No Critical DMEs Exist**

Radars 

Comms 

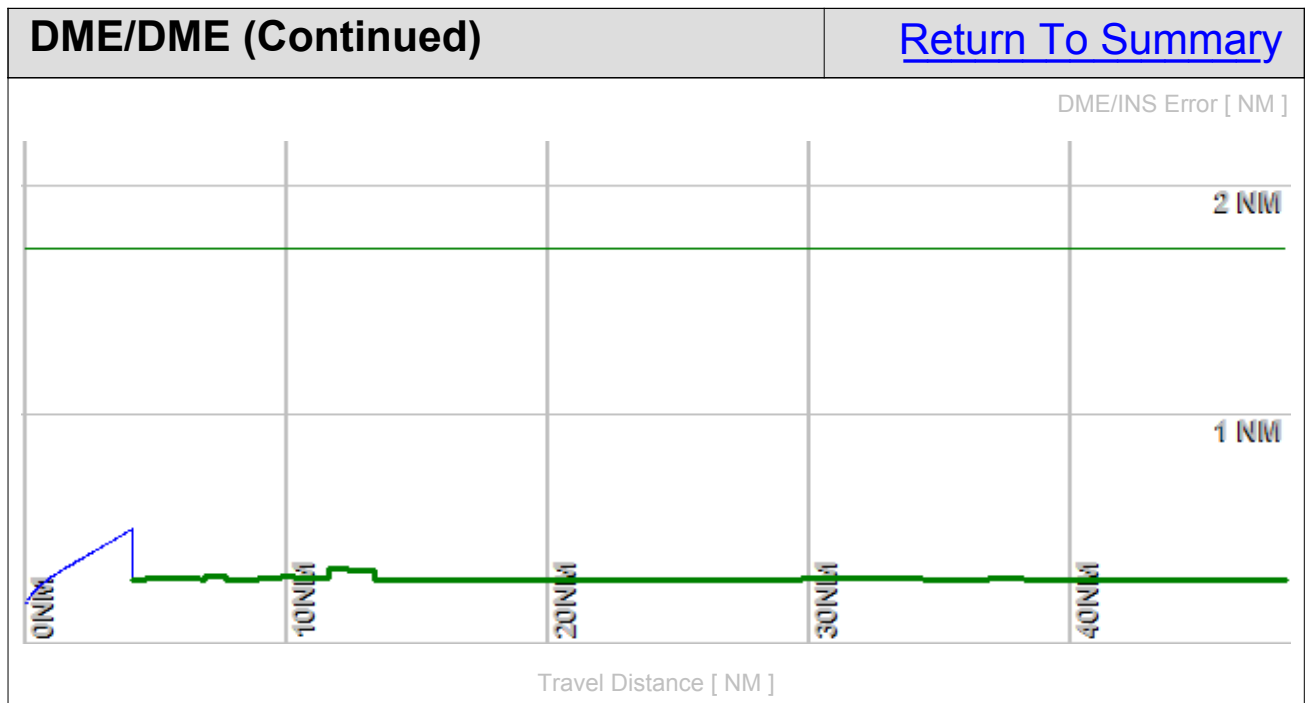
TERPS 



Flight Plan					Return To Summary		
Name	Type	Lat/Lon	Alt [ft]	VNAV Mode	IAS [Kts]	Turn Type	Leg Type
RW19(A...	WP	N 38° 51' 40.29" W 77° 2' 19.41"	12.1	VNAV	0.0	Fly Over	TF
RW01(D...	WP	N 38° 50' 29.65" W 77° 2' 12.29"	46.4	VNAV	130.0	Fly Over	VA
GH19:	WP	N 38° 49' 29.34" W 77° 2' 6.23"	515.0	VNAV	145.0	Fly Over	DF
CAPVC	WP	N 38° 44' 58.80" W 77° 2' 4.96"	1400.0	VNAV	180.0	Fly By	TF
GAITE	WP	N 38° 44' 40.12" W 77° 7' 44.97"	2300.0	VNAV	180.0	Fly By	TF
LBOLT	WP	N 38° 44' 13.13" W 77° 15' 1.42"	3400.0	VNAV	180.0	Fly By	TF
GINYA	WP	N 38° 56' 33.05" W 77° 40' 48.26"	8300.0	VNAV	180.0	Fly By	TF
WYNGS	WP	N 38° 56' 55.04" W 77° 51' 7.02"	8700.0	VNAV	180.0	Fly Over	TF
Climb Gradient: 500.0 ft/NM up to 515.0 ft MSL							

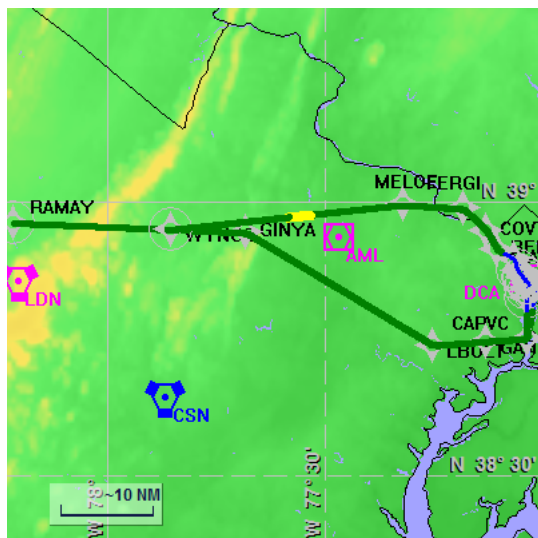
Flyability		Return To Summary
Settings:	Flight Type: Runway Departure Selected Airport: KDCA Aircraft Category: Cat D Climb Gradient: 500.0 ft/NM up to 515.0 ft MSL Ground Speeds: Departure: 120.0 Kts out to 10.0 NM Table: 200.0 Kts up to 11000.0 ft 240.0 Kts up to 18000.0 ft 260.0 Kts up to 24000.0 ft 340.0 Kts up to 99900.0 ft Wind Settings: <i>None assigned</i> Descent During a Turn: Allowed VNAV Mode: Flight Plan	
	Flight Track comes into contact with terrain. Minimum AGL along route was -69.92 Ft. Flight Track contacted terrain (DTED 0 MAX) between AER and DER or within 2/3 NM of DER.	

DME/DME		Return To Summary
Settings:	RNP: 2.0 Flight Mode: Manual Line of Sight (DTED Level 0 Max): Evaluated DME Restrictions: Evaluated Inertial Drift: Enabled Initial Drift: 0.165 NM INS Drift Rate: 8.000 NM/Hour Range Mode: OSV Co-Frequencies: Evaluated RNP Edges: Evaluated Min DME Range: 3.0 NM Allowed Gap Length: 4.0 NM DME Types: VOR/DME, VORTAC, Standalone, and User DME Include Angles: 30 to 150 Critical DMEs: Allowed DoD Facilities: Not included Foreign Facilities: Not included Low DMEs: Included Terminal DMEs: Included Flight Check DMEs: Selected Higher Altitudes: Evaluated Near Maximum Altitude: Evaluated Minimum MSL DMEs Avail: 886 ft	
Total Number of DMEs Used: 8 Maximum DME Error: 0.501 NM. No Critical DMEs were found. Available DMEs: ADW, OTT, BRV, DCA, BAL, CSN, AML, LDN, MRB		



DME/DME (Continued)						Return To Summary			
DMEs Used									
#	Name	Lat/Lon/MAGVAR	Range	Source	Critical	Err. [NM]	Status	Time	Distance
1	BRV	N 38° 20' 10.53" W 77° 21' 10.32" 09 W	L	Database	NO	0.589	Enabled	42.4%	44.3%
2	OTT	N 38° 42' 21.14" W 76° 44' 41.09" 10 W	L	Database	NO	0.967	Enabled	31.0%	27.0%
3	DCA	N 38° 51' 34.03" W 77° 2' 11.17" 09 W	L	Database	NO	0.501	Enabled	25.6%	26.3%
4	CSN	N 38° 38' 28.33" W 77° 51' 55.80" 06 W	H	Database	NO	0.501	Enabled	15.5%	17.7%
5	AML	N 38° 56' 4.55" W 77° 28' 0.10" 08 W	L	Database	NO	0.501	Enabled	19.9%	23.9%
6	BAL	N 39° 10' 15.83" W 76° 39' 40.52" 11 W	L	Database	NO	0.501	Enabled	4.5%	5.3%
7	LDN	N 38° 51' 15.81" W 78° 12' 20.00" 06 W	L	Database	NO	0.501	Enabled	18.6%	22.4%
8	MRB	N 39° 23' 8.06" W 77° 50' 54.08" 07 W	L	Database	NO	0.501	Enabled	13.6%	16.4%
	Total Coverage							85.6%	91.6%
Flight Check DME Selection									
Distance [NM]		Selected DMEs						Alternate	
0.0									
1.2									
2.1		BRV	OTT	DCA	BAL	ADW			
6.1		BRV	OTT	DCA	BAL				
10.9		BRV	OTT	CSN	BAL	AML	DCA		
16.0		BRV	OTT	CSN	DCA	AML	LDN		
26.0		BRV	LDN	MRB	DCA	AML	CSN		
39.7		CSN	LDN	MRB	DCA	AML			
Inertial Drift Segments									
#	Start Location			End Location			Length [NM]		

Available DMEs by Waypoints		Return To Summary
Waypoint Before	Waypoint After	DME List
RW19(AER)	RW01(DER)	
RW01(DER)	GH19:	
GH19:	CAPVC	ADW, BAL, BRV, DCA, and OTT
CAPVC	GAITE	BAL, BRV, DCA, and OTT
GAITE	LBOLT	AML, BAL, BRV, CSN, OTT, and DCA*
LBOLT	GINYA	AML, BRV, CSN, DCA, LDN, MRB, OTT, and ADW*
GINYA	WYNGS	AML, CSN, DCA, LDN, and MRB



Name: MARK SCHOENHOFF
Project Name: KDCA WYNGS4 SID
Output File: KDCA WYNGS4 SID RW33 WYNGS 20160113_1309
Procedure Name: WYNGS4
Software: RNAV-Pro™
Version: 2.39g
Date/Time: 1/13/2016 1:12:07 PM
Input File: [KDCA WYNGS4 SID RW33 WYNGS 20160113_1228.txt](#)
Databases: AIRNAV Date: 11/30/2015
 CIPF Date: 9/18/2015
 DTED® (MAX) Date: 2002

Results Summary:

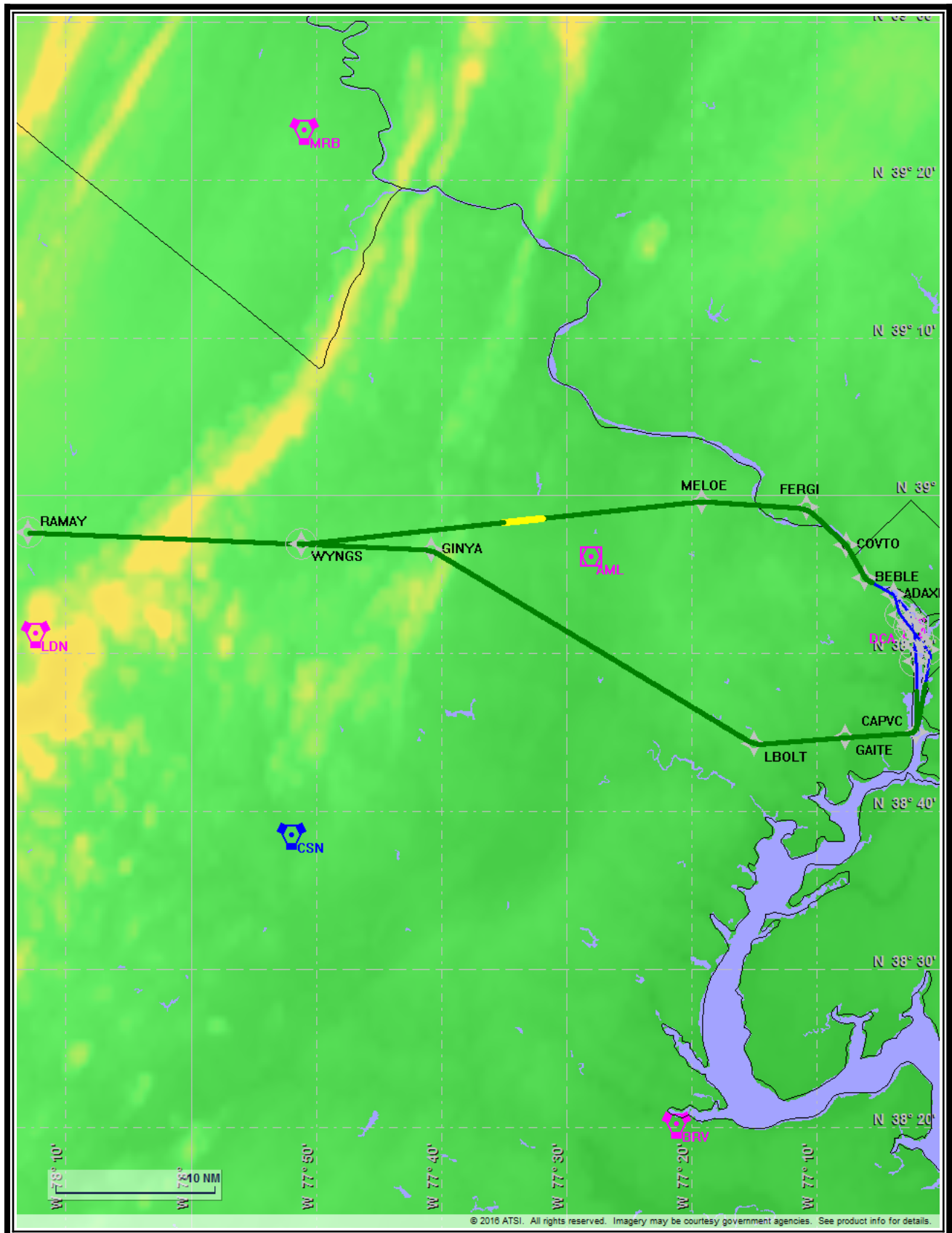
Flyability  **Please Check Flyability Results**

DME/DME  **No Critical DMEs Exist**

Radars 

Comms 

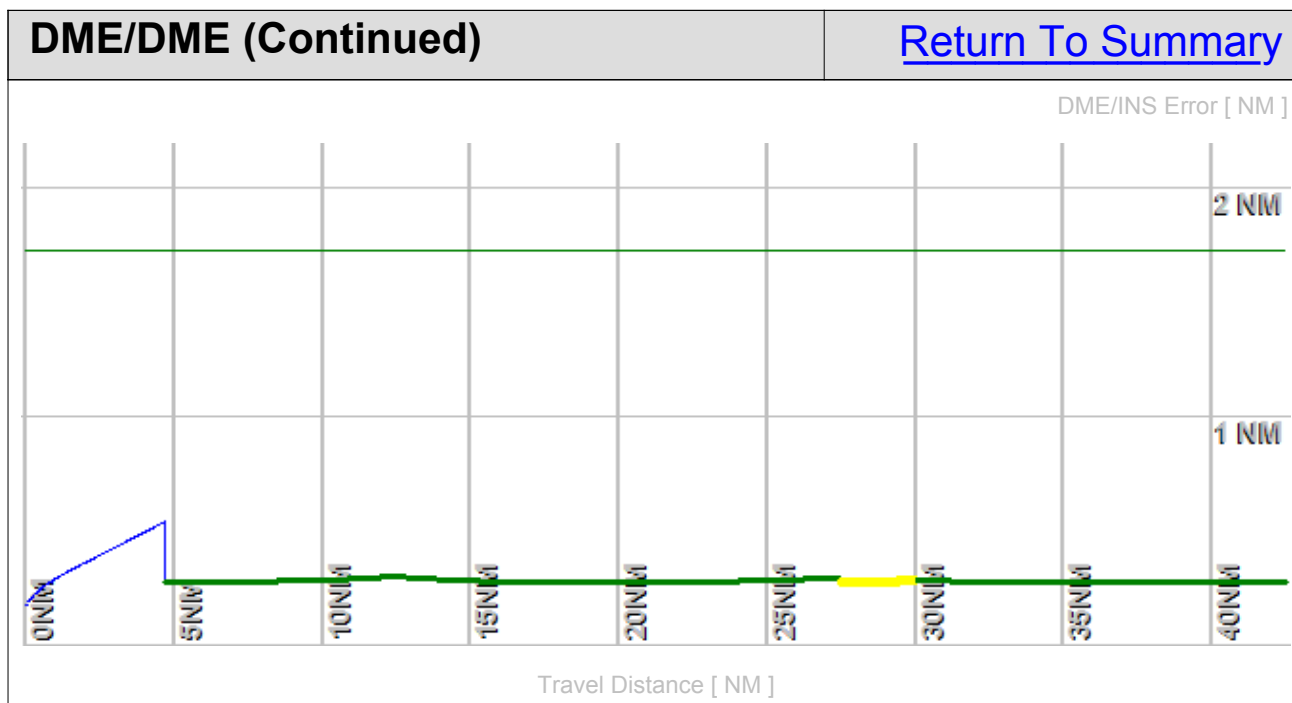
TERPS 



Flight Plan					Return To Summary		
Name	Type	Lat/Lon	Alt [ft]	VNAV Mode	IAS [Kts]	Turn Type	Leg Type
RW33(A...	WP	N 38° 50' 59.29" W 77° 1' 55.95"	10.3	VNAV	0.0	Fly Over	TF
RW15(D...	WP	N 38° 51' 40.18" W 77° 2' 35.87"	49.0	VNAV	130.0	Fly Over	VA
GH33:	WP	N 38° 52' 24.47" W 77° 3' 19.12"	515.0	VNAV	220.0	Fly Over	DF
ADAXE	WP	N 38° 53' 42.54" W 77° 3' 50.44"	900.0	VNAV	220.0	Fly By	TF
BEBLE	WP	N 38° 54' 43.48" W 77° 6' 8.35"	1300.0	VNAV	250.0	Fly By	TF
COVTO	WP	N 38° 56' 49.58" W 77° 7' 39.16"	1700.0	VNAV	250.0	Fly By	TF
FERGI	WP	N 38° 59' 12.16" W 77° 10' 50.18"	2400.0	VNAV	250.0	Fly By	TF
MELOE	WP	N 38° 59' 37.28" W 77° 19' 8.69"	3700.0	VNAV	250.0	Fly By	TF
WYNGS	WP	N 38° 56' 55.04" W 77° 51' 7.02"	8700.0	VNAV	250.0	Fly Over	TF
Climb Gradient: 540.0 ft/NM up to 515.0 ft MSL							

Flyability		Return To Summary
Settings:	Flight Type: Runway Departure Selected Airport: KDCA Aircraft Category: Cat D Climb Gradient: 540.0 ft/NM up to 515.0 ft MSL Ground Speeds: Departure: 120.0 Kts out to 10.0 NM Table: 200.0 Kts up to 11000.0 ft 240.0 Kts up to 18000.0 ft 260.0 Kts up to 24000.0 ft 340.0 Kts up to 99900.0 ft Wind Settings: <i>None assigned</i> Descent During a Turn: Allowed VNAV Mode: Flight Plan	
	Flight Track comes into contact with terrain. Minimum AGL along route was -68.44 Ft. Flight Track contacted terrain (DTED 0 MAX) between AER and DER or within 2/3 NM of DER.	

DME/DME		Return To Summary
Settings:	RNP: 2.0 Flight Mode: Manual Line of Sight (DTED Level 0 Max): Evaluated DME Restrictions: Evaluated Inertial Drift: Enabled Initial Drift: 0.165 NM INS Drift Rate: 8.000 NM/Hour Range Mode: OSV Co-Frequencies: Evaluated RNP Edges: Evaluated Min DME Range: 3.0 NM Allowed Gap Length: 4.0 NM DME Types: VOR/DME, VORTAC, Standalone, and User DME Include Angles: 30 to 150 Critical DMEs: Allowed DoD Facilities: Not included Foreign Facilities: Not included Low DMEs: Included Terminal DMEs: Included Flight Check DMEs: Selected Higher Altitudes: Evaluated Near Maximum Altitude: Evaluated Minimum MSL DMEs Avail: 1207 ft	
Total Number of DMEs Used: 8 Maximum DME Error: 0.543 NM. No Critical DMEs were found. Available DMEs: OTT, BAL, DCA, EMI, AML, CSN, LDN, MRB		



DME/DME (Continued)						Return To Summary			
DMEs Used									
#	Name	Lat/Lon/MAGVAR	Range	Source	Critical	Err. [NM]	Status	Time	Distance
1	BAL	N 39° 10' 15.83" W 76° 39' 40.52" 11 W	L	Database	NO	0.894	Enabled	23.9%	18.2%
2	DCA	N 38° 51' 34.03" W 77° 2' 11.17" 09 W	L	Database	NO	0.714	Enabled	35.6%	32.2%
3	EMI	N 39° 29' 42.03" W 76° 58' 42.86" 08 W	H	Database	NO	0.543	Enabled	16.3%	19.7%
4	OTT	N 38° 42' 21.14" W 76° 44' 41.09" 10 W	L	Database	NO	0.543	Enabled	11.3%	13.9%
5	CSN	N 38° 38' 28.33" W 77° 51' 55.80" 06 W	H	Database	NO	0.543	Enabled	26.0%	31.9%
6	MRB	N 39° 23' 8.06" W 77° 50' 54.08" 07 W	L	Database	NO	0.543	Enabled	27.4%	33.6%
7	LDN	N 38° 51' 15.81" W 78° 12' 20.00" 06 W	L	Database	NO	0.543	Enabled	15.7%	19.2%
8	AML	N 38° 56' 4.55" W 77° 28' 0.10" 08 W	L	Database	NO	0.543	Enabled	7.6%	9.3%
	Total Coverage							81.9%	89.0%
Flight Check DME Selection									
Distance [NM]		Selected DMEs						Alternate	
0.0									
0.9									
1.7									
2.8		BAL	DCA	OTT					
4.9		BAL	DCA	EMI					
7.4		BAL	DCA	EMI					
10.4		BAL	DCA	EMI	OTT	AML		CSN	
17.1		CSN	MRB	EMI	OTT	LDN		DCA	
27.2		CSN	MRB	AML	DCA	LDN			
Inertial Drift Segments									
#	Start Location			End Location				Length [NM]	

Available DMEs by Waypoints		Return To Summary
Waypoint Before	Waypoint After	DME List
RW33(AER)	RW15(DER)	
RW15(DER)	GH33:	
GH33:	ADAXE	
ADAXE	BEBLE	BAL, DCA, and OTT
BEBLE	COVTO	BAL, DCA, and EMI
COVTO	FERGI	BAL, DCA, and EMI
FERGI	MELOE	AML, BAL, DCA, EMI, OTT, and CSN*
MELOE	WYNGS	AML, CSN, DCA, EMI, LDN, MRB, OTT, and BAL*