

Flight Procedure Tracking Form		Action: AMENDMENT	Task Type: IAP	Date Open: 12/17/2015	Task #: 2015121731549401002	Request #: 20151217315494
Procedure: APPROACH RNAV (GPS) RWY 34 AMDT 1B			Airport ID: KO28	Airport: ELLS FIELD-WILLITS MUNI		Reimbursable #: NO
City: WILLITS	ST: CA	GPS #:	Estimated Chart Date: 10/08/2020			FICO #:
Fac ID: N/A		Fac. Type:			Specialist: BRYAN BLUE	
Procedure Review						
	Rec'd	Rel'd	Full Name	Comments		
Lead:	01/04/2016	1/22/16	B. Lylian			
QA:						
Liaison:						
Procedure Comments:			ENROUTE-NON	Remark Type: INFORMATION		
P-NOTAM 6/6459 CONTACT: ALAN WILL/JOHNNIE BAKER, 405.954.4576/5148						

[Print](#)

Project Name: 028 (ELLS FIELD-WILLITS MUNI) CA

Project Reason: P-NOTAM - AIRPORT DOES NOT HAVE A LOCAL ALTIMETER. NOTAM ISSUED TO REMOVED LOCAL ALTIMETER NOTE AND UPDATE MINIMUMS TO INCLUDE UKIAH ALTIMETER INCREASE BY 260 FEET. VERIFIED THE ADJUSTMENT IN IPDS.


Last Updated By: Bryan Blue

Last Updated At: 2016-01-21 22:24:40.531398

Status: Verified

IFDC X/XXXX 028 IAP ELLS FIELD-WILLITS MUNI, WILLITS, CA. RNAV (GPS) RWY 34, AMDT 1A... LNAV MDA 3200/HAT 1037 ALL CATS. VIS CAT A 1 1/4, CAT B 1 1/2, CAT C 3. CIRCLING MDA 3200/HAA 1037 ALL CATS. VIS CAT A 1 1/4, CAT B 1 1/2, CAT C 3. DELETE NOTE: WHEN LOCAL ALTIMETER SETTING NOT RECEIVED, USE UKIAH ALTIMETER SETTING AND INCREASE ALL MDA 260 FEET. DELETE NOTE: VISIBILITY REDUCTION BY HELICOPTERS NA. CHART NOTE: HELICOPTER VISIBILITY REDUCTION BELOW 1 SM NOT AUTHORIZED. CHART NOTE: USE UKIAH ALTIMETER SETTING. CHART UKIAH ASOS. THIS IS RNAV (GPS) RWY 34, AMDT 1B. 1601212224-PERM



6/6459 ^{DB} 1/22/16 

APP CRS 339°	Rwy Idg	3000
	TDZE	2063
	Apt Elev	2063

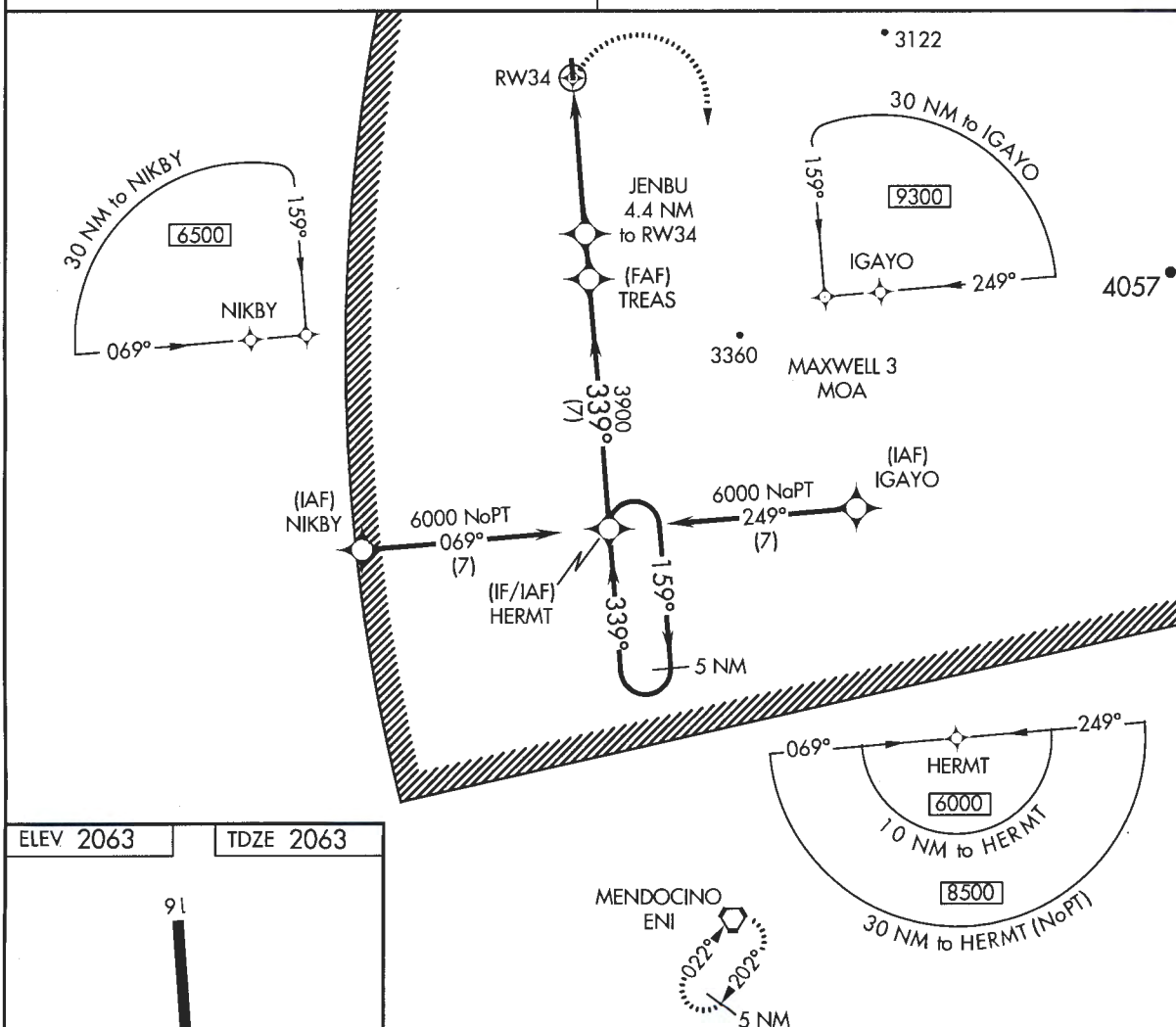
RNAV (GPS) RWY 34

T	Circling NA west of Rwy 16 and 34. DME/DME RNP-0.3 NA. Visibility reduction
A NA	by helicopters NA. When local altimeter setting not received, use Ukiah altimeter setting and increase all MDA 260 feet, increase LNAV and Circling Cats A and B visibility $\frac{1}{4}$ mile, increase LNAV and Circling Cat C visibility $\frac{1}{2}$ mile. Procedure NA at night.

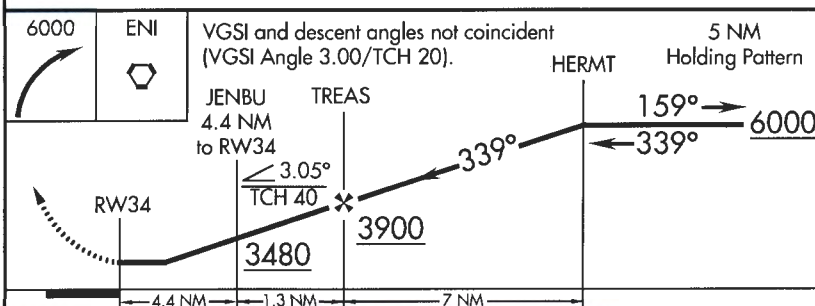
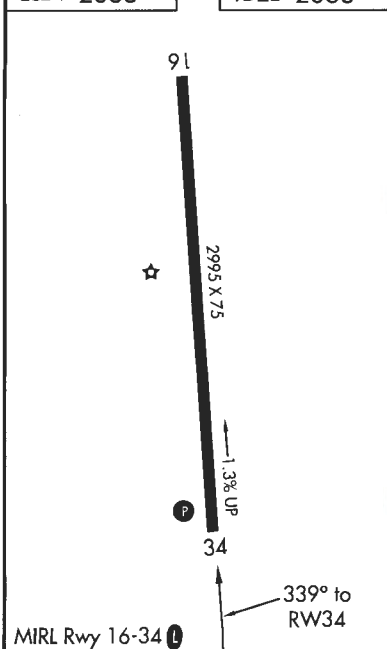
MISSED APPROACH: Climbing right turn to 6000 direct ENI VORTAC and hold.

OAKLAND CENTER
132.2 350.3

UNICOM
122.8 (CTAF) **L**



ELEV 2063		TDZE 2063
-----------	--	-----------



CATEGORY	A	B	C	D
INAV MDA	2940-1 877 (900-1)	2940-1¼ 877 (900-1¼)	2940-2½ 877 (900-2½)	NA
CIRCLING	2940-1 877 (900-1)	2940-1¼ 877 (900-1¼)	2940-2½ 877 (900-2½)	NA

WILLITS, CALIFORNIA
Amdt 1A 07MAR13

39°27'N-123°22'W

ELLS FIELD-WILLITS MUNI (028)
RNAV (GPS) RWY 34

SW-2, 04 FEB 2016 to 03 MAR 2016

SW-2, 04 FEB 2016 to 03 MAR 2016