

Flight Procedure Tracking Form		Action: FLIGHT CHECK	Task Type: IAP	Date Open: 10/18/2016	Task #: 2015120801110601005	Request #: 20151208011106
Procedure: APPROACH RNAV (GPS) RWY 27 AMDT 1A				Airport ID: KRKS	Airport: ROCK SPRINGS- SWEETWATER COUNTY	Reimbursable #: NO
City: ROCK SPRINGS	ST: WY	GPS #:	Estimated Chart Date: 01/05/2017		FICO #:	
Fac ID: N/A		Fac. Type:			Specialist: LIAM DONAHUE	
Procedure Review						
	Rec'd	Rel'd	Full Name	Comments		
Lead:	06/30/2016					
QA:			J ZEDER 11/03/2016 16			
Liaison:						
Procedure Comments:			Remark Type: INFORMATION			
<p>ENROUTE-NON</p> <p>CONTACT: DON LANIER, AJV, 5431 LEAD, 405.954-8242</p> <p>REQUEST TABLE TOP.</p>						

INFORMATION ONLY

ROCK SPRINGS, WYOMING

AL-353 (FAA)

15288

WAAS
CH 49216
W27A

APP CRS
270°

Rwy Idg 10000
TDZE 6764
Apt Elev 6764

RNAV (GPS) RWY 27
ROCK SPRINGS-SWEETWATER COUNTY (RKS)

For inoperative MALS, increase LNAV/VNAV Cat D visibility to 1 mile. For uncompensated Baro-VNAV systems, LNAV/VNAV NA below -28°C (-18°F) or above 35°C (95°F). Inoperative table does not apply to LNAV Cat D. DME/DME RNP-0.3 NA.



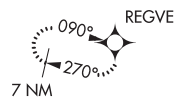
MISSED APPROACH: Climb to 9800 direct REGVE and hold.

ASOS
118.375

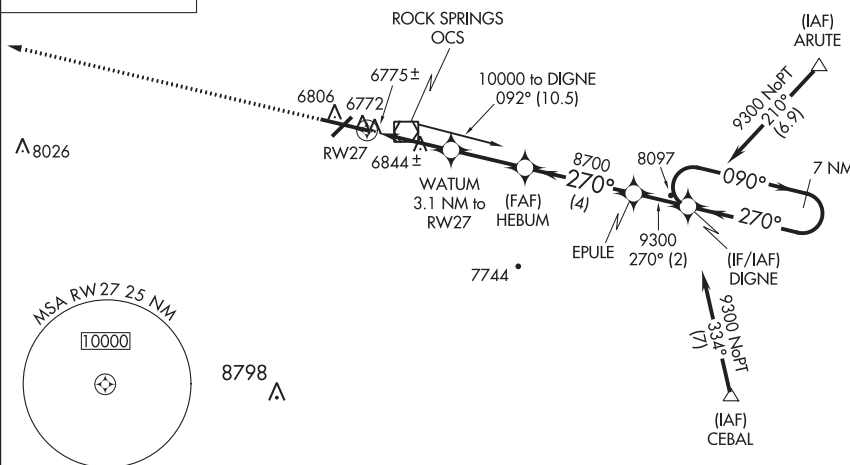
CASPER RADIO
122.6

UNICOM
122.8 (CTAF)

MISSED APCH FIX



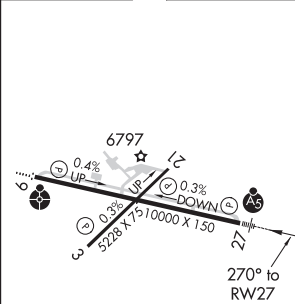
Procedure NA for arrivals at OCS VOR/DME on V235 southwest bound.



NW-1, 13 OCT 2016 to 10 NOV 2016

NW-1, 13 OCT 2016 to 10 NOV 2016

ELEV 6764 TDZE 6764



REIL Rwy 3 and 21
MIRL Rwy 3-21
HIRL Rwy 9-27

9800 REGVE				
*LNAV only.				
WATUM 3.1 NM to RW27				
*0.9 NM to RW27				
*7800				
EPULE DIGNE 7 NM Holding Pattern				
GP 3.00° TCH 49				
CATEGORY	A	B	C	D
LPV DA	6964-1/2 200 (200-1/2)			
LNAV/VNAV DA	7035-1/2 271 (300-1/2)		7035-3/4 271 (300-3/4)	
LNAV MDA	7100-1/2 336 (400-1/2)		7100-1 336 (400-1)	
CIRCLING	7140-1 376 (400-1)	7220-1 456 (500-1)	7220-1 1/2 456 (500-1 1/2)	7320-2 556 (600-2)

ROCK SPRINGS, WYOMING
Amdt 1 08APR10

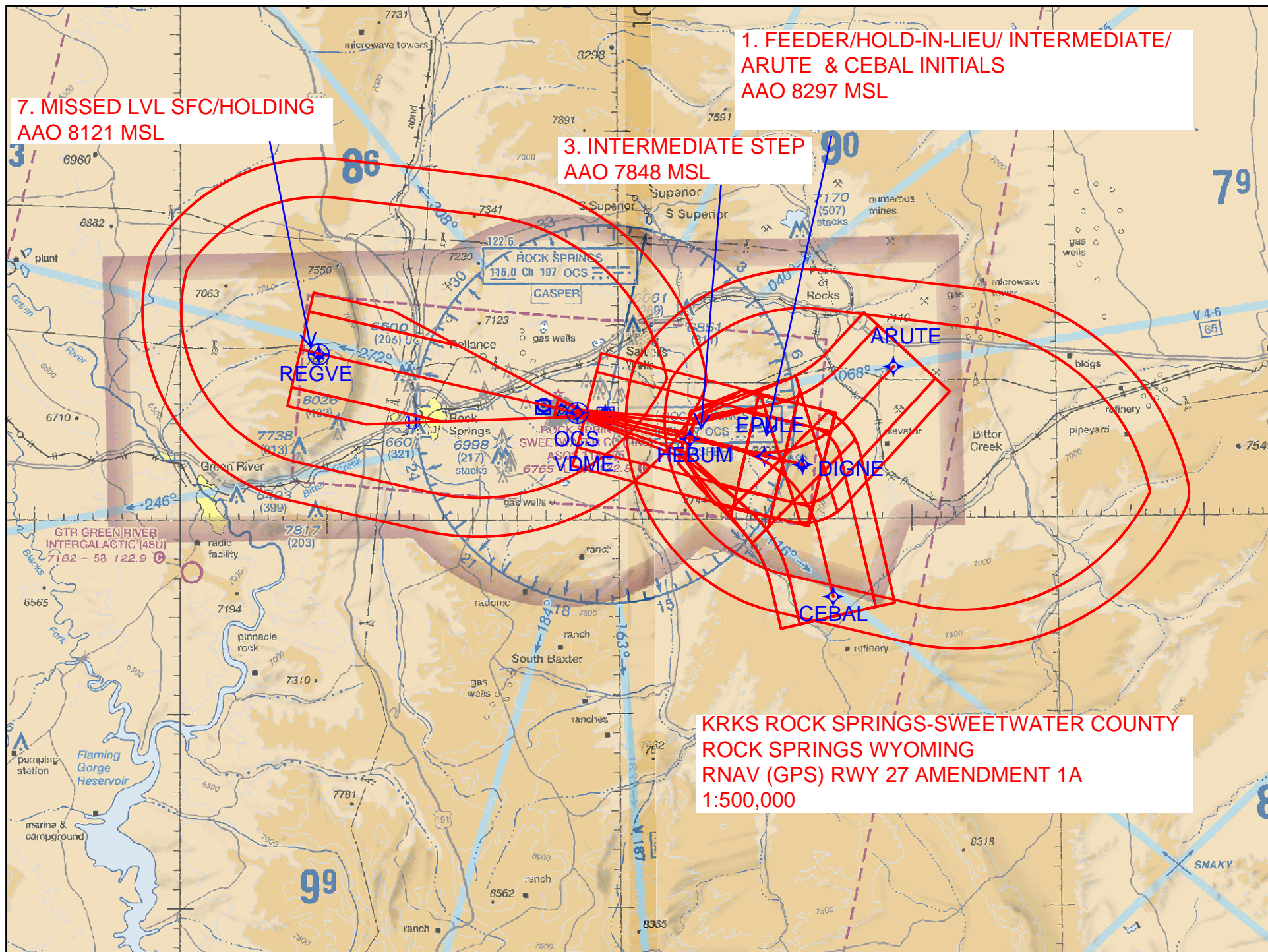
ROCK SPRINGS-SWEETWATER COUNTY (RKS)
41°36'N-109°04'W
RNAV (GPS) RWY 27

INFORMATION ONLY

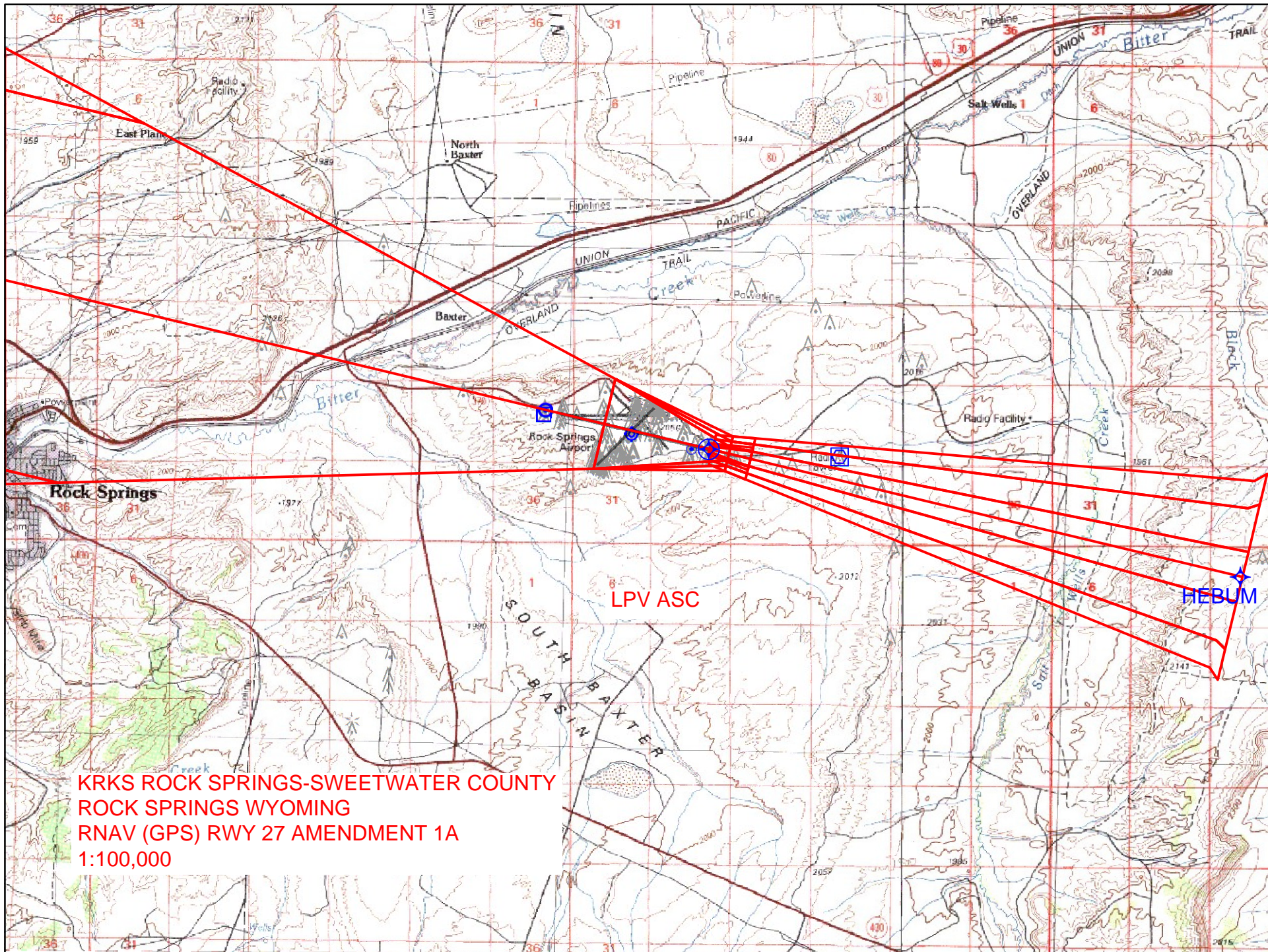
7. MISSED LVL SFC/HOLDING
AAO 8121 MSL

1. FEEDER/HOLD-IN-LIEU/ INTERMEDIATE/
ARUTE & CEBAL INITIALS
AAO 8297 MSL

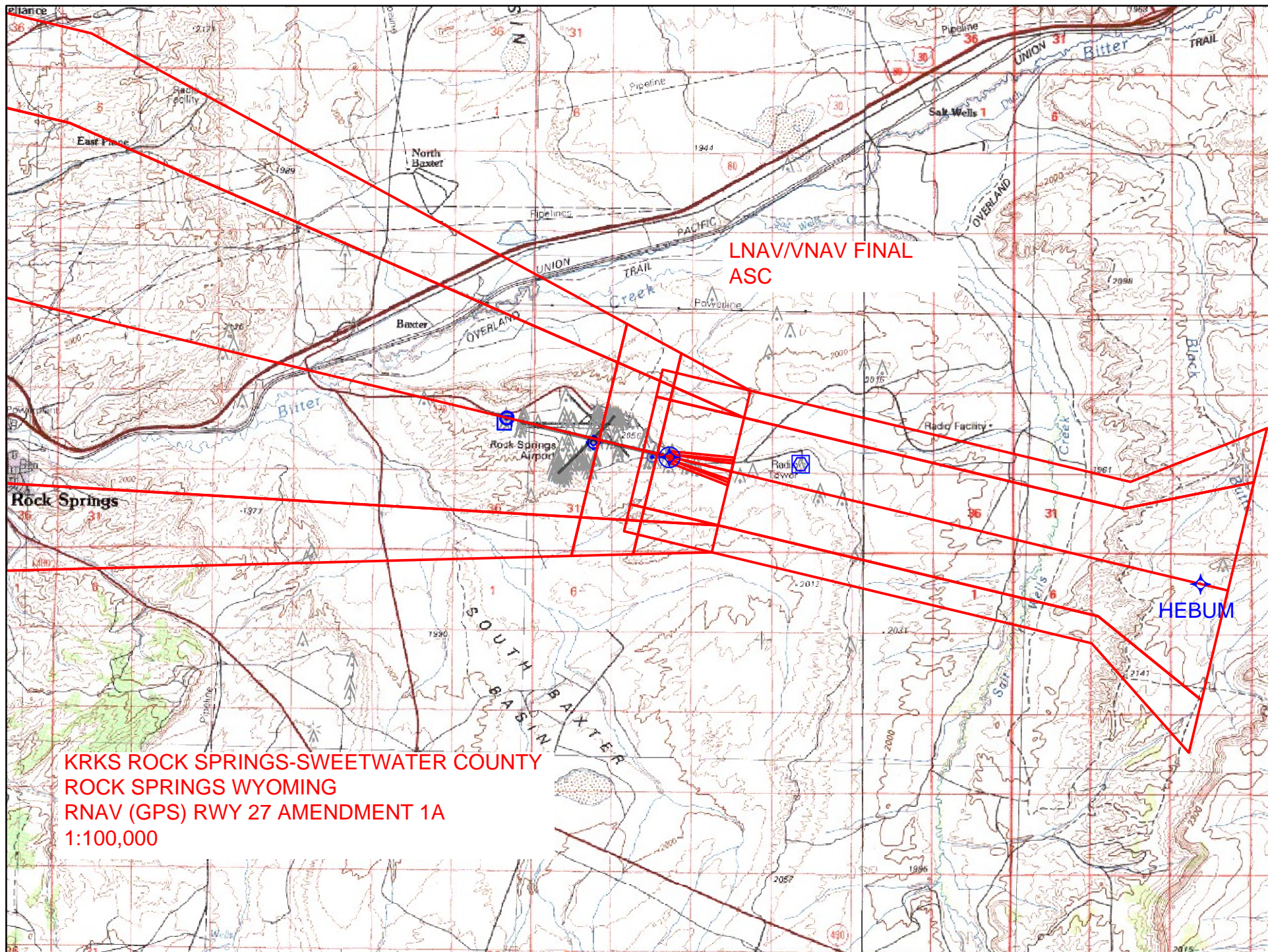
3. INTERMEDIATE STEP
AAO 7848 MSL



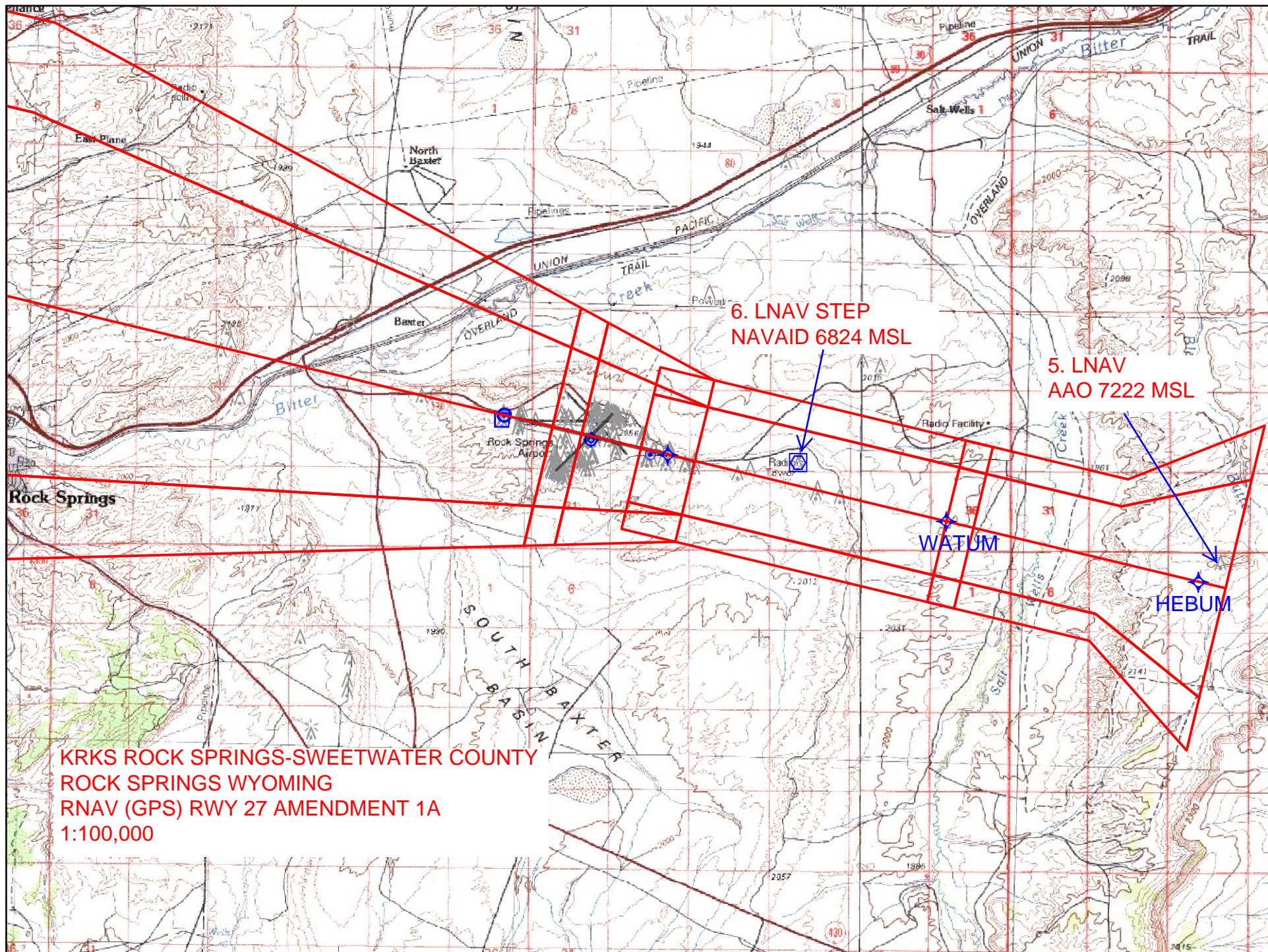
KRKS ROCK SPRINGS-SWEETWATER COUNTY
ROCK SPRINGS WYOMING
RNAV (GPS) RWY 27 AMENDMENT 1A
1:500,000



KRKS ROCK SPRINGS-SWEETWATER COUNTY
ROCK SPRINGS WYOMING
RNAV (GPS) RWY 27 AMENDMENT 1A
1:100,000



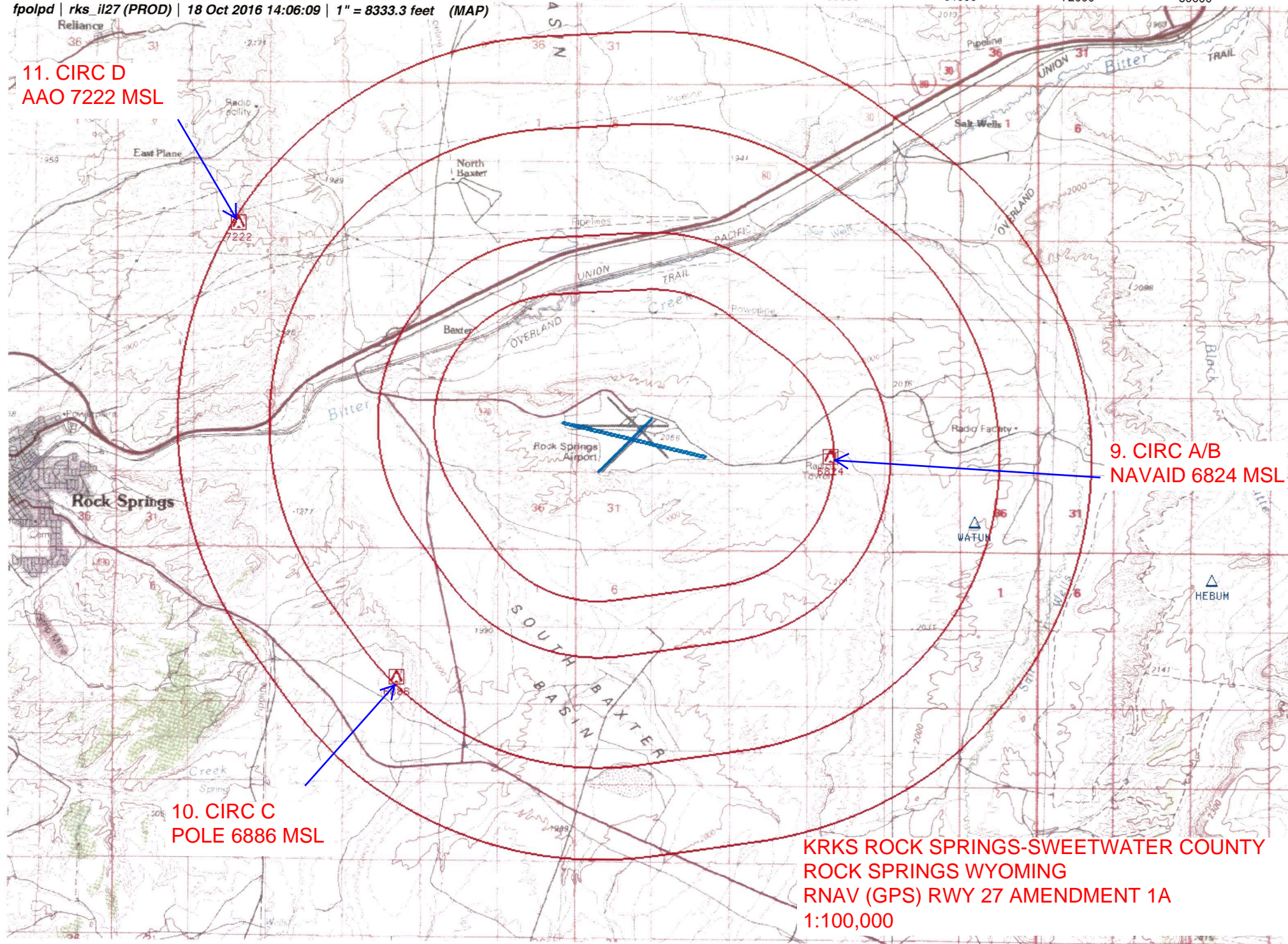
KRKS ROCK SPRINGS-SWEETWATER COUNTY
ROCK SPRINGS WYOMING
RNAV (GPS) RWY 27 AMENDMENT 1A
1:100,000



NM 1 2 3 4 5 6 7 8 9 10 11 12 13 14
FT 8000 16000 24000 32000 40000 48000 56000 64000 72000 80000

fpolpd | rks_il27 (PROD) | 18 Oct 2016 14:06:09 | 1" = 8333.3 feet (MAP)

11. CIRC D
AAO 7222 MSL



9. CIRC A/B
NAVAID 6824 MSL

10. CIRC C
POLE 6886 MSL

KRKS ROCK SPRINGS-SWEETWATER COUNTY
ROCK SPRINGS WYOMING
RNAV (GPS) RWY 27 AMENDMENT 1A
1:100,000