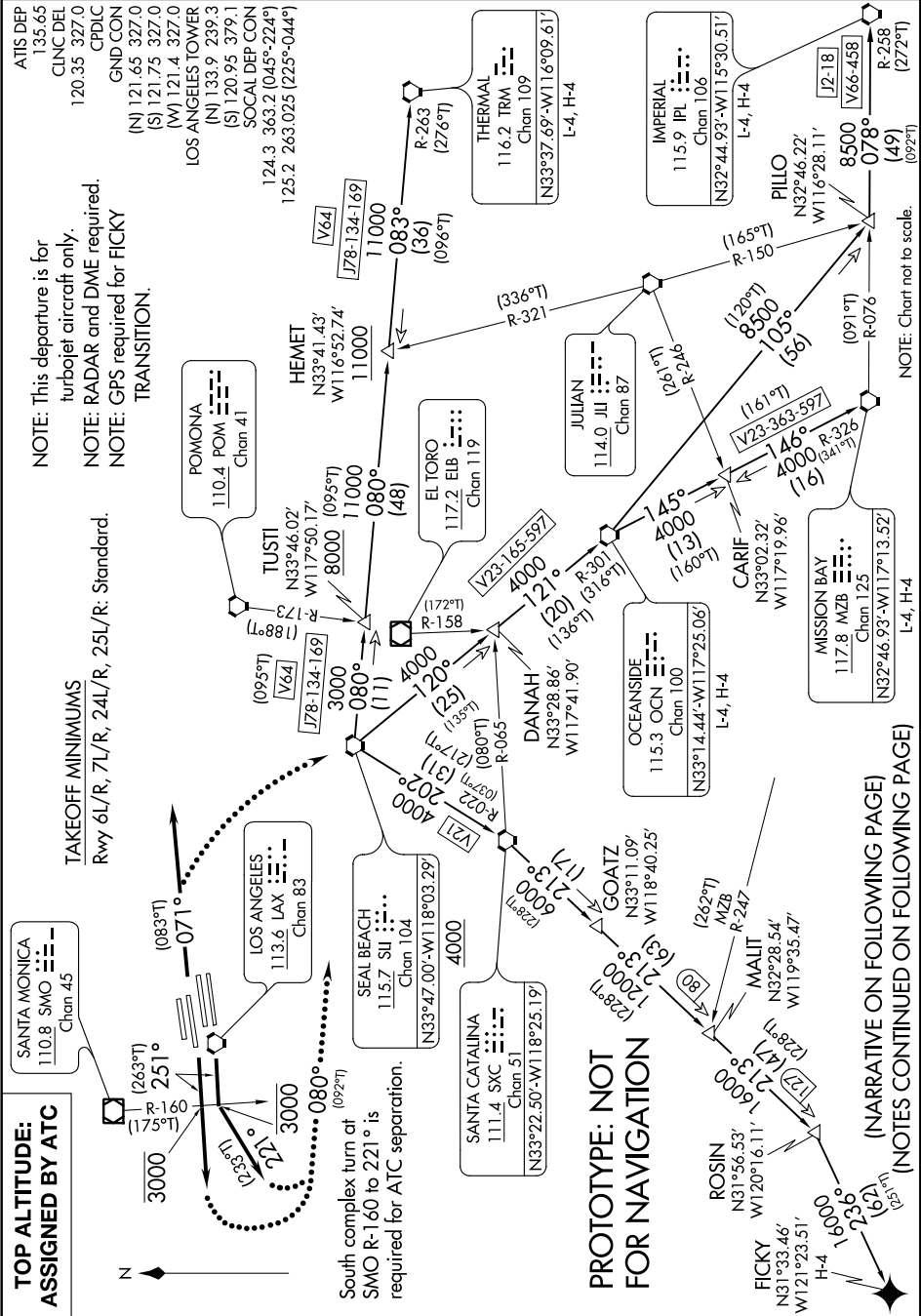


Flight Procedure Tracking Form		Action: FLIGHT CHECK	Task Type: SID	Date Open: 11/20/2015	Task #: 2015112029549306001	Request #: 20151120295493
Procedure: SID LAXX NINE LOS ANGELES CA KLAX			Airport ID: KLAX	Airport: LOS ANGELES INTL	Reimbursable #: NO	
City: LOS ANGELES	ST: CA	GPS #:	Estimated Chart Date: 11/10/2016		FICO #: 1172391	
Fac ID: N/A		Fac. Type:		Specialist: ROBERT GRIM		
Procedure Review						
	Rec'd	Rel'd	Full Name	Comments		
Lead:	04/28/2016	06/17/2016	JOHNNIE BAKER			
QA:	06/17/2016	08/19/2016	CASIMIR TABAKA			
Liaison:	08/19/2016	08/19/2016	MARY MCDONALD			
Procedure Comments:			ENROUTE	Remark Type: INFORMATION		
<p>CONTACT INFO: JOHNNIE BAKER, AJV-5430, 405.954.5148</p> <p>08/24/16: THIS IS A CORRECTED COPY OF THE FORM APPROVED ON 08/19/16. 1. CHANGED DP ROUTE DESCRIPTION RWY 25 L/R FROM CLIMB ON HEADING 251.00 TO CROSS SMO R-160 AT OR BELOW 3000, THEN TURN LEFT HEADING 235.00. EXPECT RADAR VECTORS TO ASSIGNED ROUTE/FIX/TRANSITION THENCE... TO TAKEOFF RWYS 25L/R: CLIMB ON HEADING 251.00, AT THE SMO R-160 TURN LEFT HEADING 221.00, CROSS SMO R-160 AT OR BELOW 3000, EXPECT RADAR VECTORS TO ASSIGNED ROUTE/FIX/TRANSITION THENCE...</p> <p>09/28/16: THIS IS A CORRECTED COPY OF THE FORM APPROVED ON 08/19/16. 1. CHANGED TURN HEADING FROM 235 TO 221 IN ADDITIONAL FLIGHT DATA BLOCK.</p>						

QUALITY
2
CHECKED

LAXX NINE DEPARTURE



LAXX NINE DEPARTURE

LAXX NINE DEPARTURE



DEPARTURE ROUTE DESCRIPTION

TAKEOFF RUNWAYS 6L/R, 7L/R: Climb heading 071° for vectors to SLI VORTAC, thence. . . .
TAKEOFF RUNWAYS 24L/R: Climb on heading 251° to cross SMO R-160 at or below 3000, then on RADAR vectors to assigned route/fix/transition, thence. . . .
TAKEOFF RUNWAYS 25L/R: Climb on heading 251° at SMO R-160 turn left heading 221°. cross SMO R-160 at or below 3000, Expect RADAR vectors to assigned route/fix/transition, thence. . . .
...all aircraft expect further clearance to filed flight level five minutes after departure.

FICKY TRANSITION (LAXX9.FICKY): From over SLI VORTAC on SLI R-202 and SXC R-022 to SXC VORTAC, then on SXC R-213 to ROSIN, then on track 236° to FICKY.
IMPERIAL TRANSITION (LAXX9.IPL): From over SLI VORTAC on SLI R-120 to DANAH, then on OCN R-301 to OCN VORTAC, then on OCN R-105 to PILLO, then on MZB R-076 and IPL R-258 to IPL VORTAC.

MISSION BAY TRANSITION (LAXX9.MZB): From over SLI VORTAC on SLI R-120 to DANAH, then on OCN R-301 to OCN VORTAC, then on OCN R-145 to CARIF, then on MZB R-326 to MZB VORTAC.
OCEANSIDE TRANSITION (LAXX9.OCN): From over SLI VORTAC on SLI R-120 to DANAH, then on OCN R-301 to OCN VORTAC.

THERMAL TRANSITION (LAXX9.TRM): From over SLI VORTAC on SLI R-080 to TUSTI, then on SLI R-080 and TRM R-263 to HEMET, then on TRM R-263 to TRM VORTAC.

LOST COMMUNICATIONS

RUNWAYS 6L/R, 7L/R: If not in contact with departure control within five minutes after departure, climb to FL230 or filed altitude whichever is lower, turn right direct SLI VORTAC and proceed on assigned route. Aircraft filed FL240 or above, maintain FL230 for five minutes then continue climb to filed altitude.
RUNWAYS 24L/R, 25L/R: If not in contact with departure control within five minutes after departure, turn left heading 080°, climb to FL230 or filed altitude whichever is lower, and when able proceed direct filed or assigned route. Aircraft filed FL240 or above, maintain FL230 for five minutes then continue climb to filed altitude.

PROTOTYPE-NOT FOR NAVIGATION

(NOTES CONTINUED ON FOLLOWING PAGE)

LAXX NINE DEPARTURE

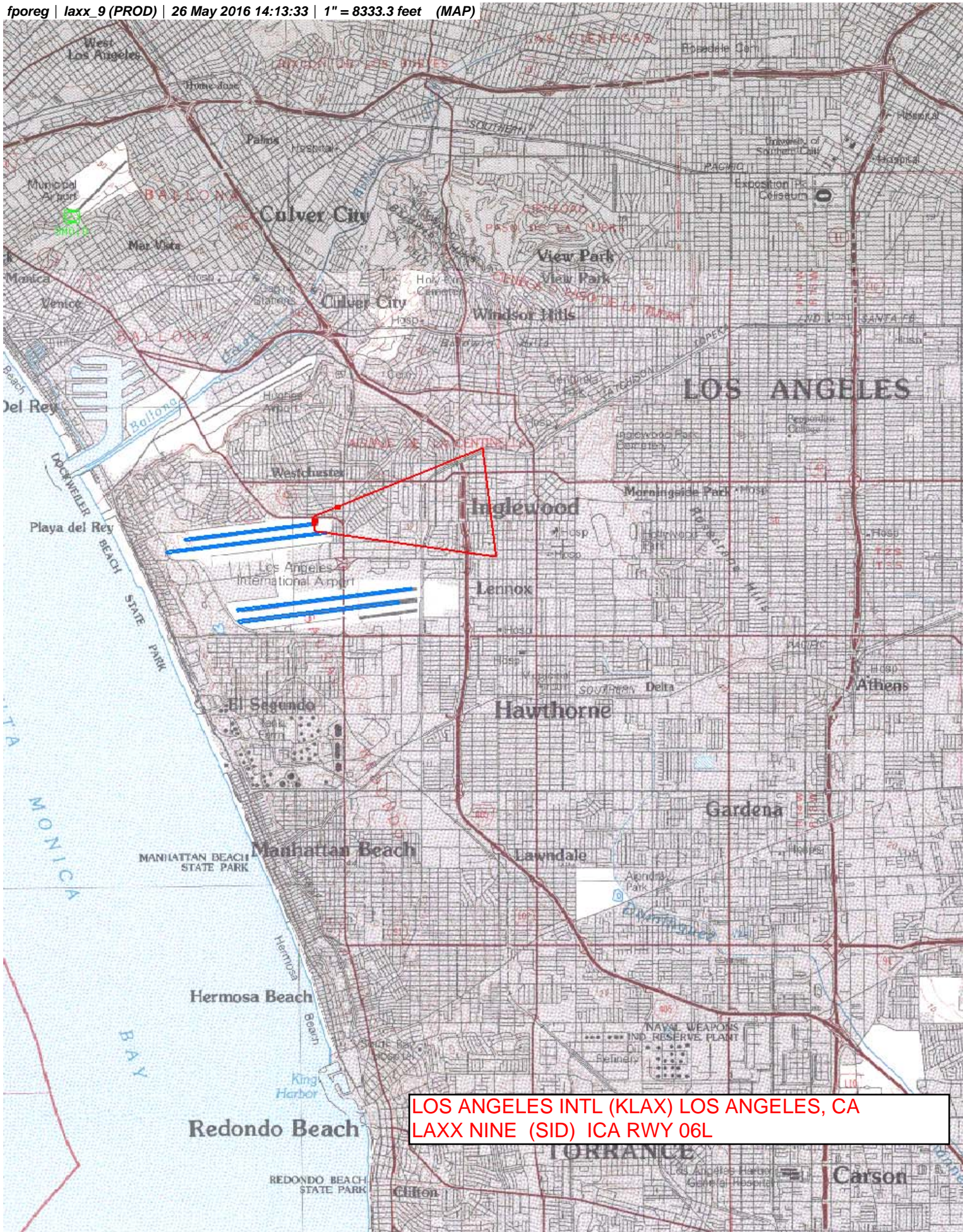
TAKEOFF OBSTACLE NOTES

- Rwy 6L: Runway light 8' from DER, 5' left of centerline, 1' AGL/120' MSL.
Road beginning 12' from DER, 171' left of centerline, up to 131' MSL.
Obstruction light on building, beginning 1762' from DER, 920' left of centerline, up to 92' AGL/203' MSL.
- Rwy 6R: Navaid 79' from DER, 321' left of centerline, 20' AGL/123' MSL.
Navaid 83' from DER, 2' right of centerline, 19' AGL/126' MSL.
Vehicle 112' from DER, 41' left of centerline, 15' AGL/129' MSL.
Pole, light pole, beginning 323' from DER, 1' right of centerline, up to 16' AGL/138' MSL.
Light pole, beginning 528' from DER, 58' left of centerline, up to 30' AGL/137' MSL.
Pole 778' from DER, 2' right of centerline, 34' AGL/140' MSL.
Light pole 779' from DER, 1' right of centerline, 35' AGL/142' MSL.
Pole 792' from DER, 460' right of centerline, 39' AGL/145' MSL.
Approach light 797' from DER, 702' left of centerline, 39' AGL/148' MSL.
Approach light, pole, beginning 797' from DER, 304' left of centerline, up to 39' AGL/148' MSL.
Approach light 1006' from DER, 702' left of centerline, 42' AGL/149' MSL.
Approach light 1006' from DER, 696' left of centerline, 42' AGL/149' MSL.
Tree 1057' from DER, 399' left of centerline, 41' AGL/150' MSL.
Trees, beginning 1160' from DER, 319' left of centerline, up to 49' AGL/157' MSL.
Tree 1374' from DER, 308' left of centerline, 47' AGL/159' MSL.
Tree 1385' from DER, 316' left of centerline, 50' AGL/163' MSL.
Tree 1699' from DER, 102' right of centerline, 57' AGL/164' MSL.
- Rwy 7L: Fence, vehicles on road, beginning 168' from DER, 0' of centerline, up to 14' AGL/107' MSL.
Road 183' from DER, 480' left of centerline, 109' MSL.
Tower, fence, vehicles on road, railroad, pole, beginning 198' from DER, 24' left of centerline, up to 24' AGL/118' MSL.
Railroad, vehicles on road, beginning 309' from DER, 14' right of centerline, up to 117' MSL.
Runway light, pole, vehicles, on road, navaid, beginning 444' from DER, on centerline, up to 29' AGL/121' MSL.
Sign 495' from DER, 477' left of centerline, 32' AGL/124' MSL.
Sign, road, light pole, vehicle, beginning 508' from DER, 98' left of centerline, up to 32' AGL/126' MSL.
Pole, building, runway light, beginning, 700' from DER, 53' left of centerline, up to 58' AGL/152' MSL.
- Rwy 7R: Runway light 10' from DER, 5' right of centerline, 2' AGL/99' MSL.
Runway light 10' from DER, 4' left of centerline, 2' AGL/99' MSL.
Building 792' from DER, 702' right of centerline, 37' AGL/130' MSL.
Tree 1250' from DER, 747' right of centerline, 129' AGL/155' MSL.
- Rwy 24L: Windsock 136' from DER, 299' right of centerline, 21' AGL/128' MSL.
Tower 211' from DER, 298' right of centerline, 66' AGL/151' MSL.
Tower 212' from DER, 297' right of centerline, 48' AGL/155' MSL.
Light pole 2025' from DER, 1003' left of centerline, 30' AGL/165' MSL.
Tower, pole, beginning 2036' from DER, 982' left of centerline, up to 44' AGL/178' MSL.
- Rwy 24R: Windsock 136' from DER, 399' left of centerline, 21' AGL/128' MSL.
Tower 211' from DER, 400' left of centerline, 66' AGL/151' MSL.
Tower 212' from DER, 401' left of centerline, 48' AGL/155' MSL.
- Rwy 25L: Ground 11' from DER, 8' right of centerline, 122' MSL.
Road 34' from DER, 422 left of centerline, 130' MSL.
Pole 2364' from DER, 767' left of centerline, 57' AGL/184' MSL.
Tree, transmission line tower, beginning 2487' from DER, 758' left of centerline, up to 66' AGL/200' MSL.
- Rwy 25R: Vehicles on Road 52' from DER, 489' right of centerline, 132' MSL.

LAXX NINE DEPARTURE

NM 1 2 3 4 5 6 7 8 9 10
FT 8000 16000 24000 32000 40000 48000 56000 64000

fporeg | laxx_9 (PROD) | 26 May 2016 14:13:33 | 1" = 8333.3 feet (MAP)

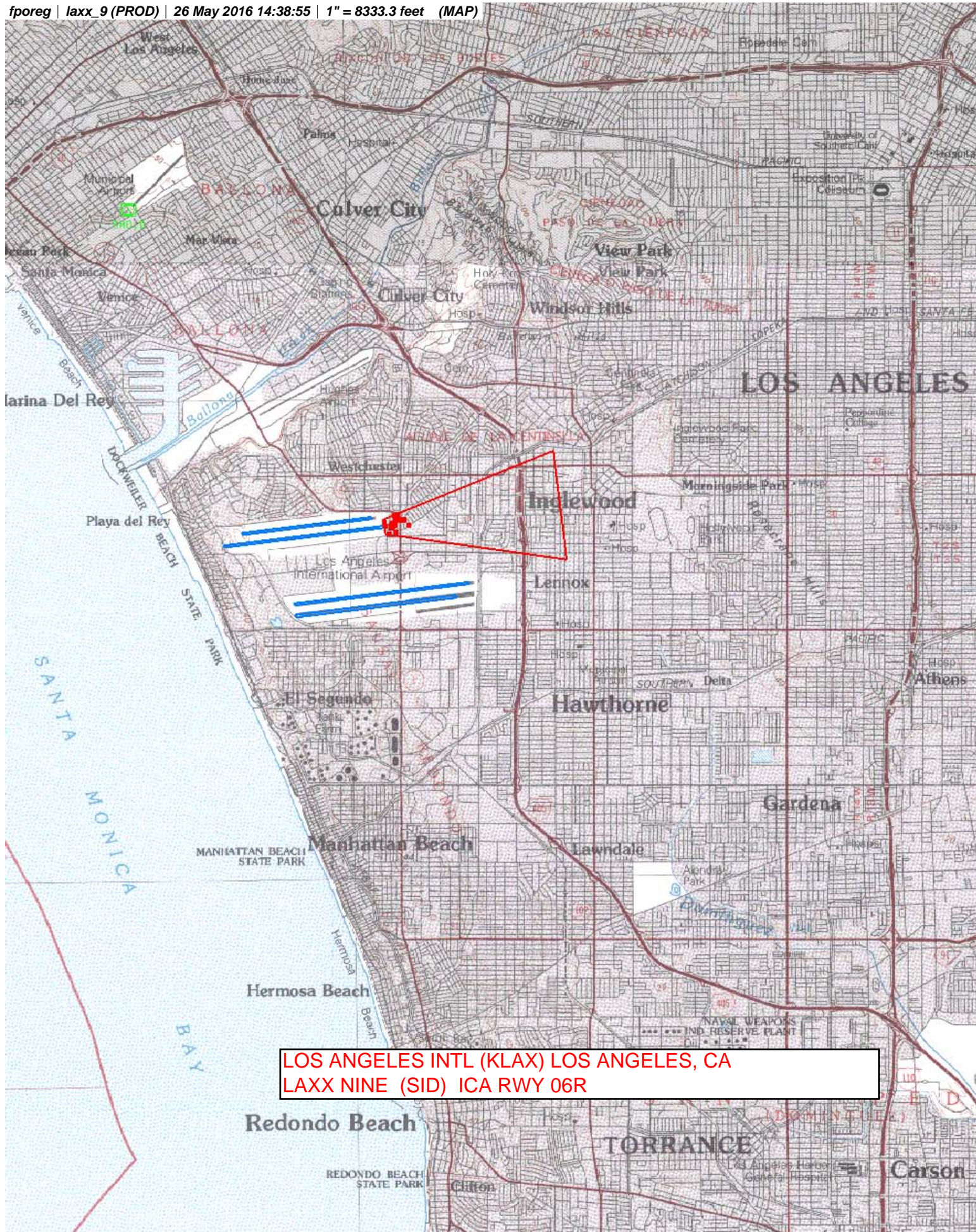


LOS ANGELES INTL (KLAX) LOS ANGELES, CA
LAXX NINE (SID) ICA RWY 06L

GTC SOC
20 NM ON

NM 1 2 3 4 5 6 7 8 9 10
FT 8000 16000 24000 32000 40000 48000 56000 64000

fporeg | laxx_9 (PROD) | 26 May 2016 14:38:55 | 1" = 8333.3 feet (MAP)





NM 1 2 3 4 5 6 7 8 9 10
FT 8000 16000 24000 32000 40000 48000 56000 64000

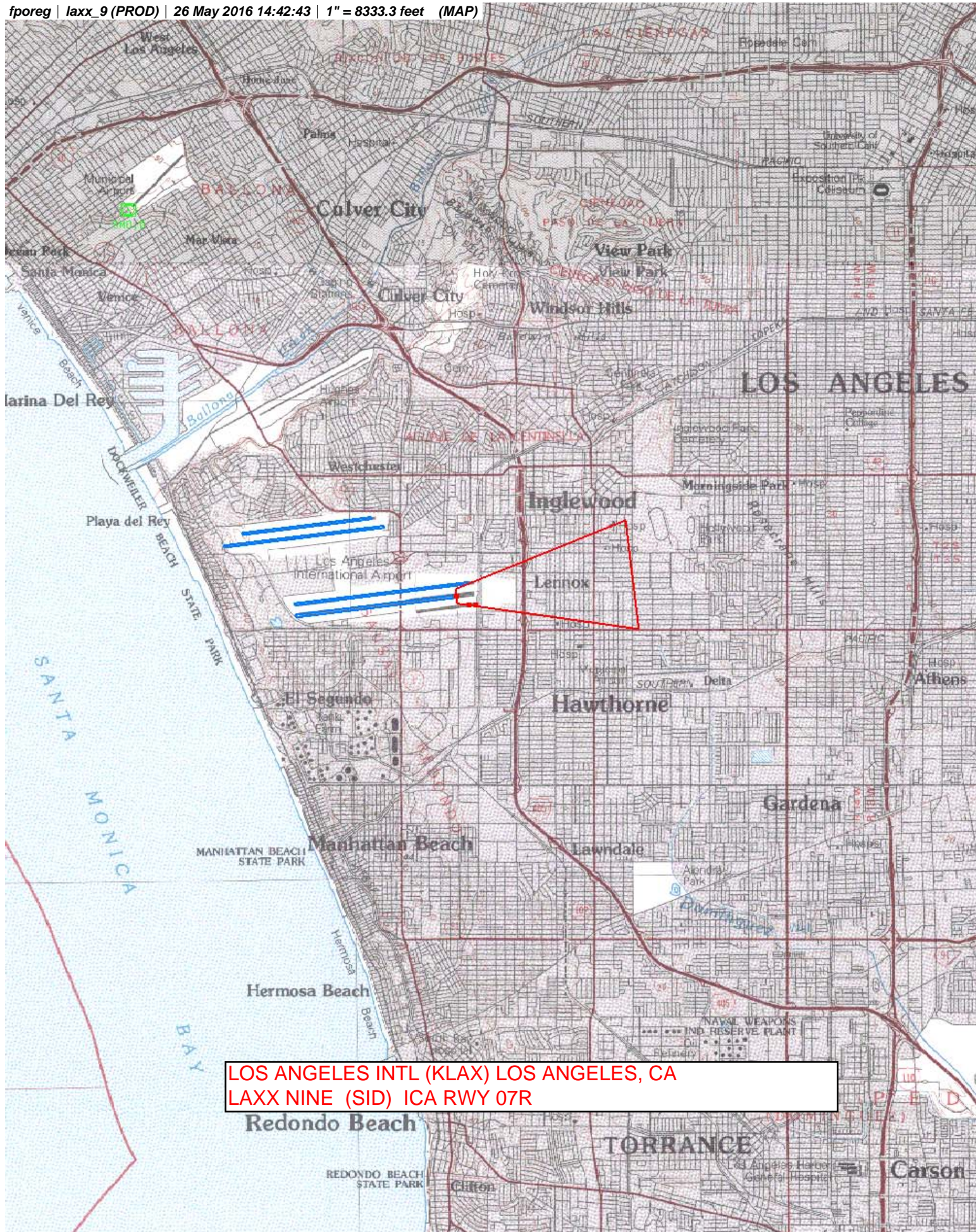
fporeg | laxx_9 (PROD) | 26 May 2016 14:50:38 | 1" = 8333.3 feet (MAP)





NM 1 2 3 4 5 6 7 8 9 10
FT 8000 16000 24000 32000 40000 48000 56000 64000

fporeg | laxx_9 (PROD) | 26 May 2016 14:42:43 | 1" = 8333.3 feet (MAP)



LOS ANGELES INTL (KLAX) LOS ANGELES, CA
LAXX NINE (SID) ICA RWY 07R

NM 1 2 3 4 5 6 7 8 9 10
FT 8000 16000 24000 32000 40000 48000 56000 64000

fporeg | laxx_9 (PROD) | 26 May 2016 13:34:55 | 1" = 8333.3 feet (MAP)



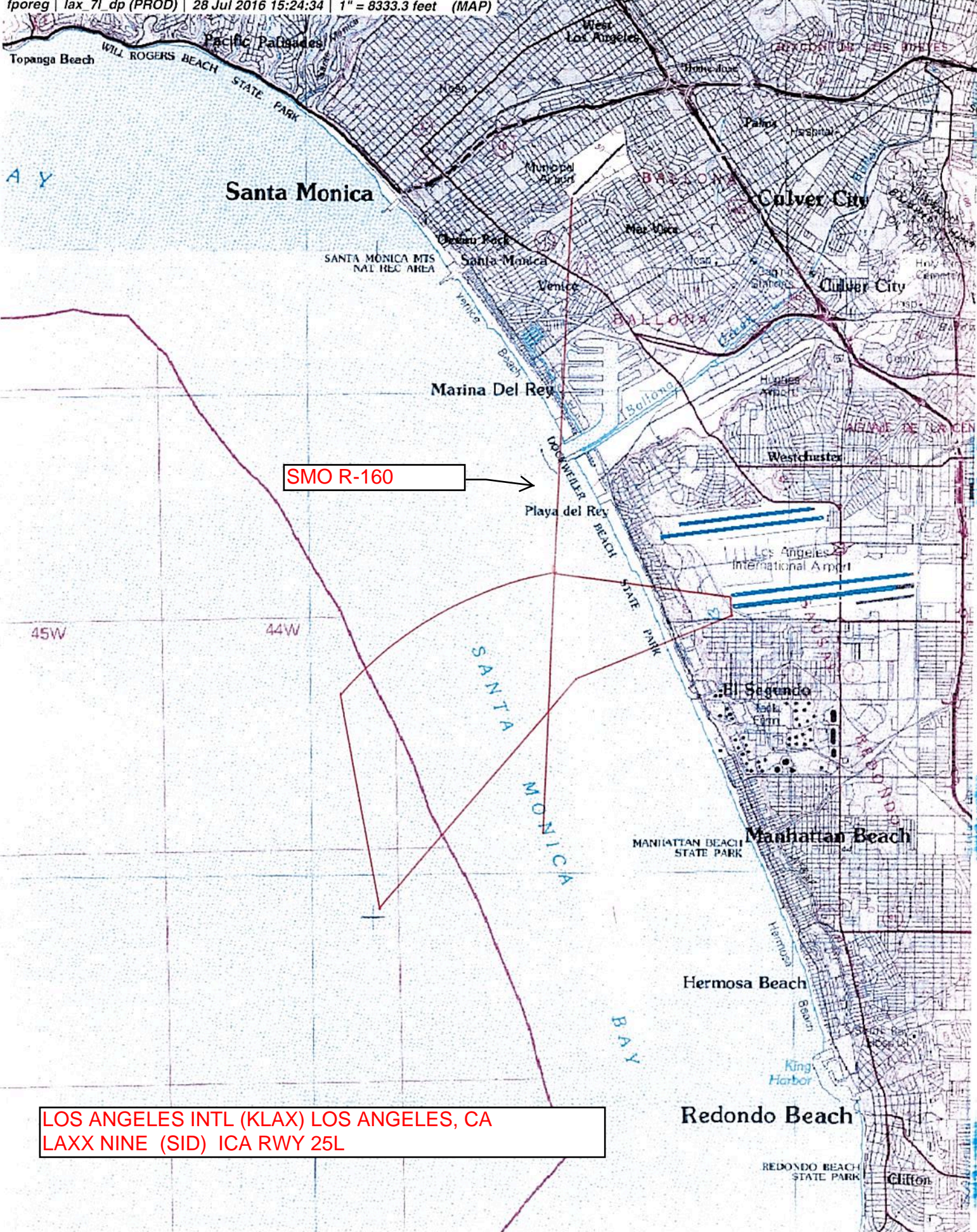


NM 1 2 3 4 5 6 7 8 9 10
FT 8000 16000 24000 32000 40000 48000 56000 64000

fporeg | laxx_9 (PROD) | 26 May 2016 13:07:32 | 1" = 8333.3 feet (MAP)

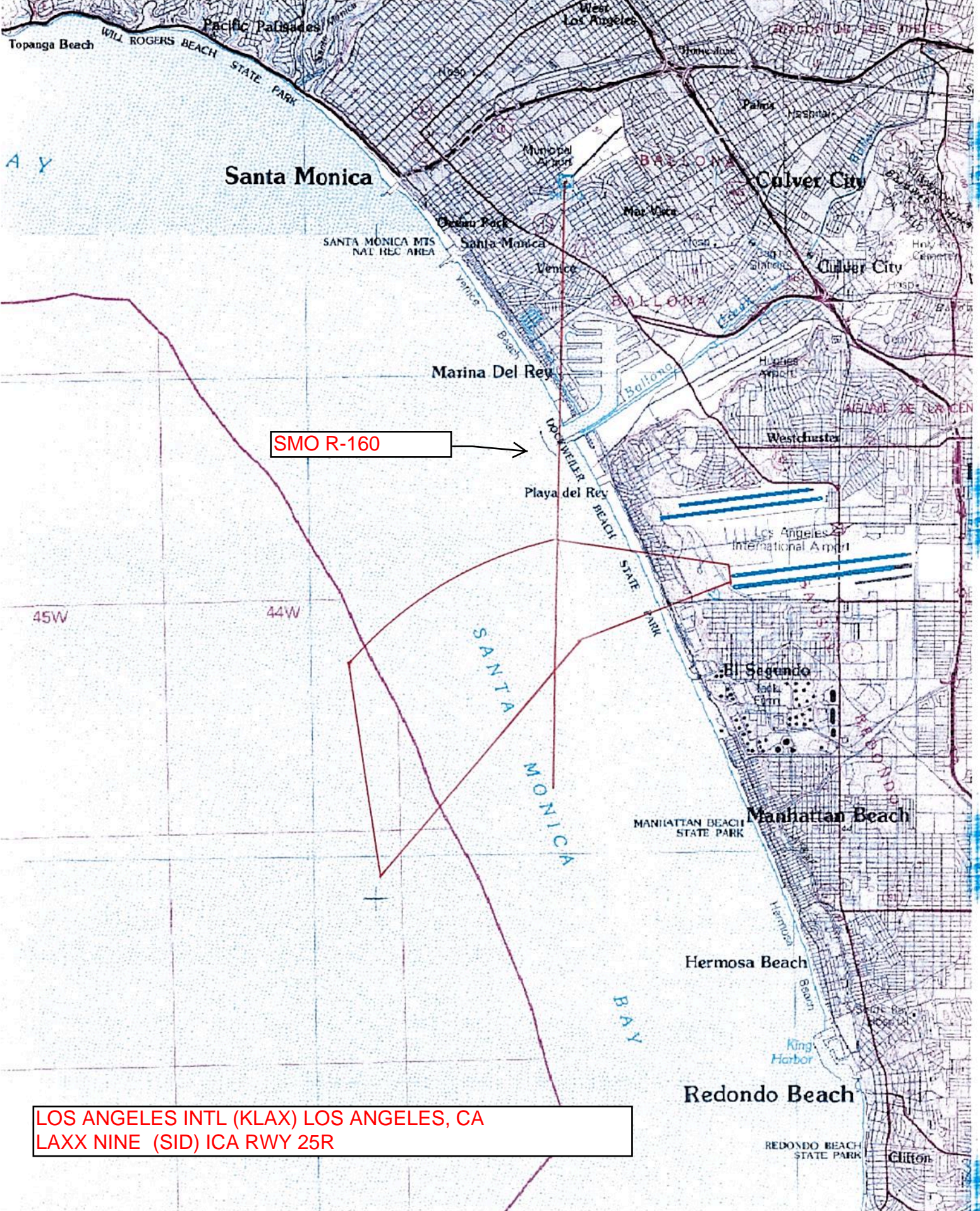






LOS ANGELES INTL (KLAX) LOS ANGELES, CA
LAXX NINE (SID) ICA RWY 25L



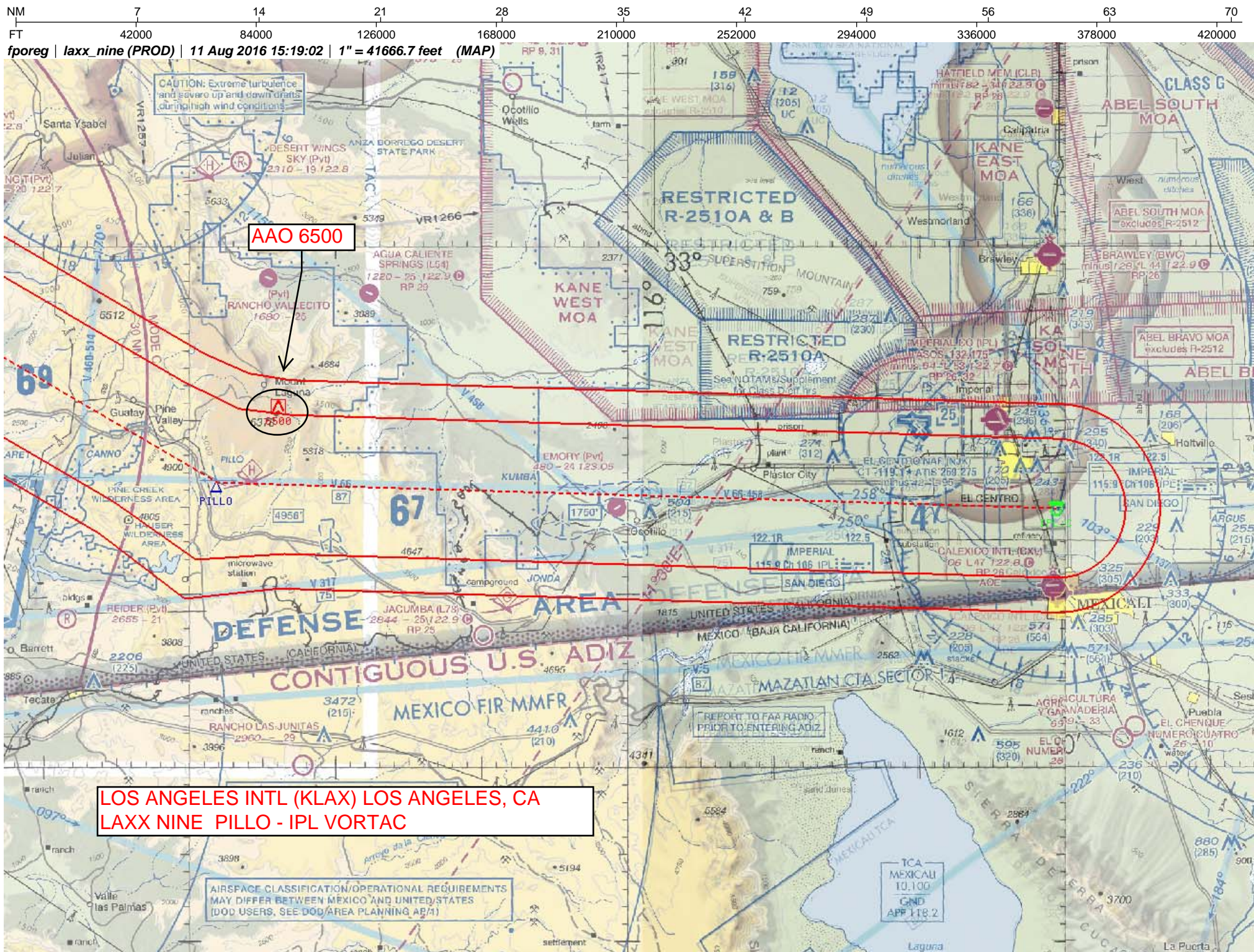


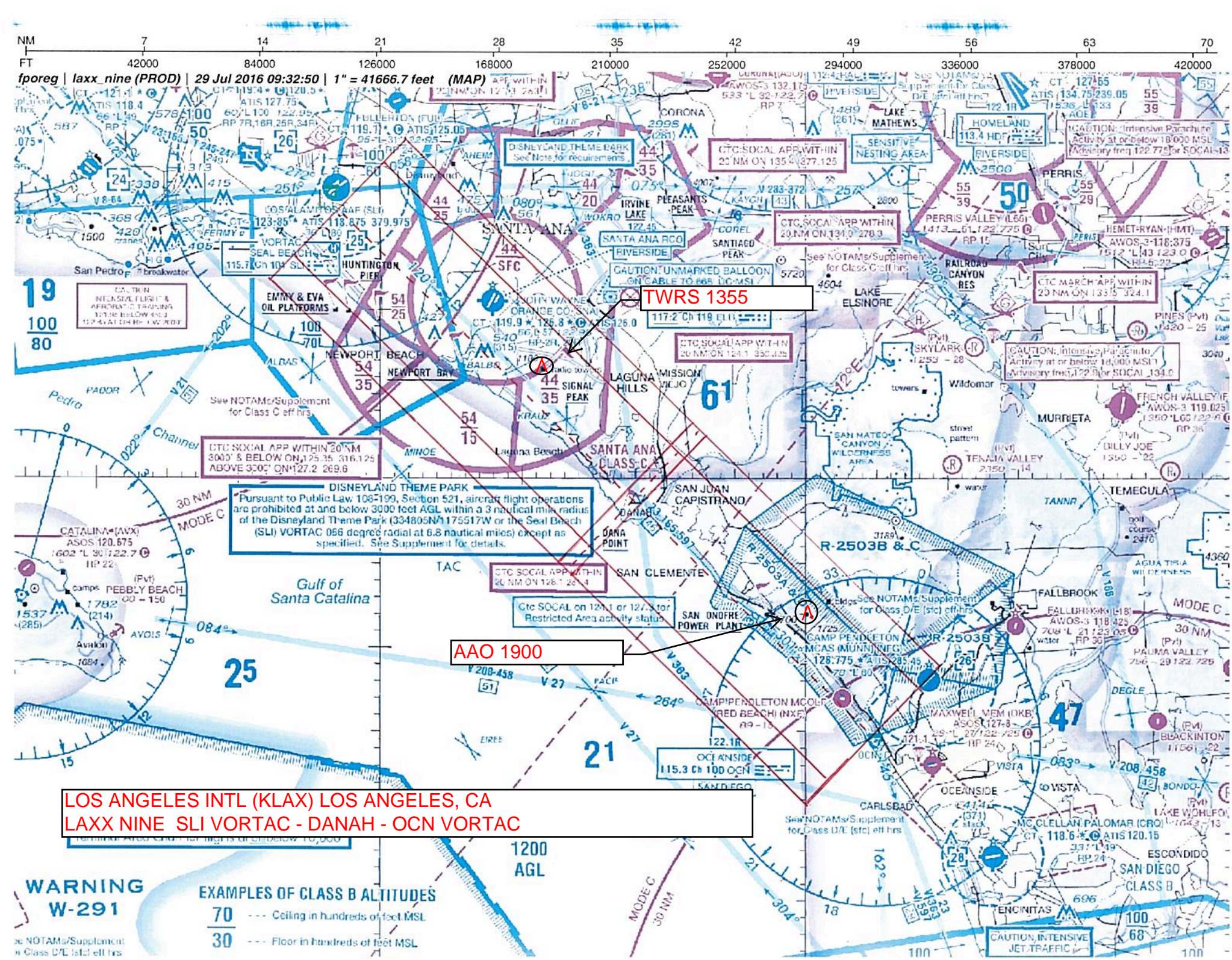
SMO R-160

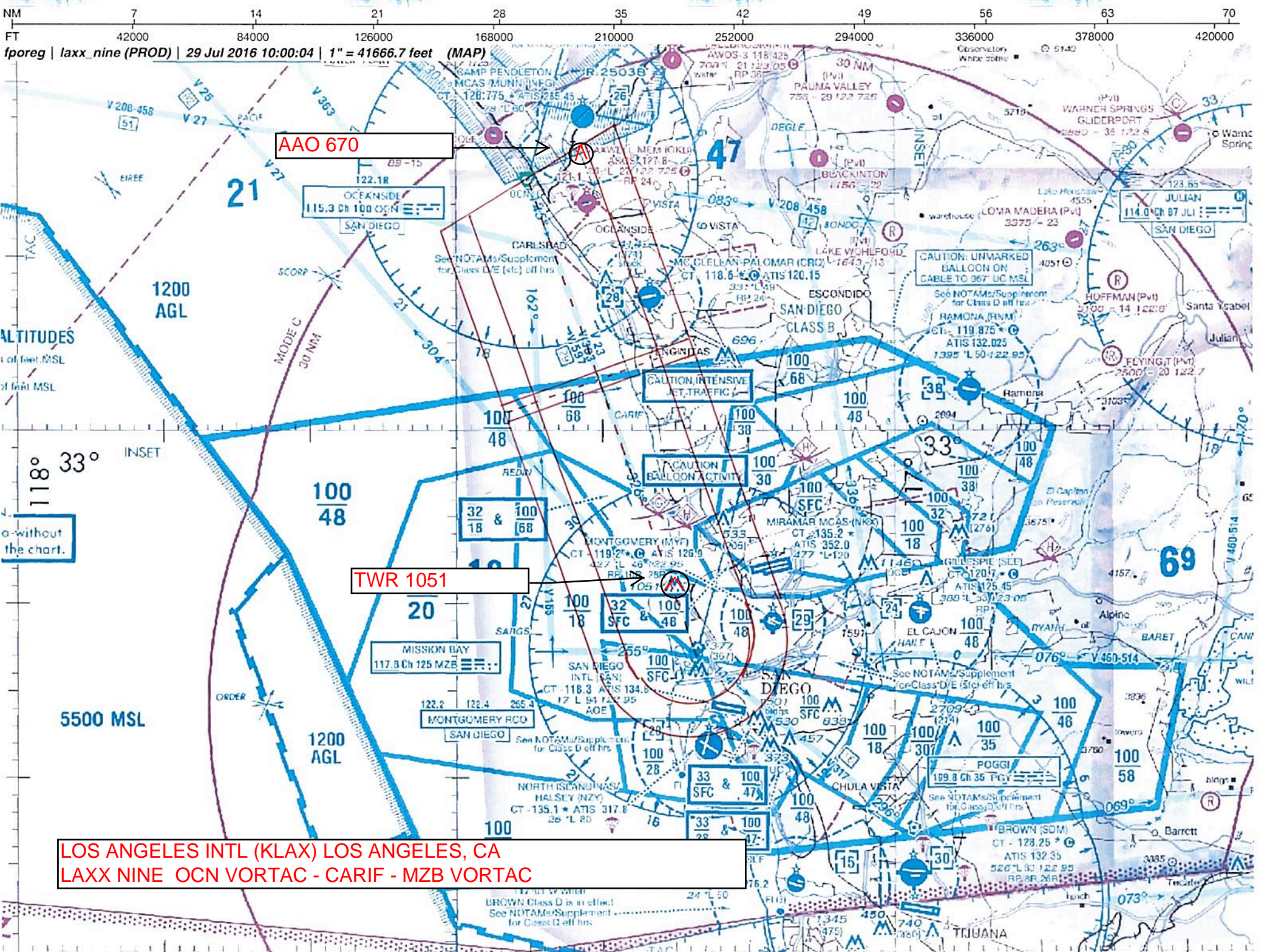
LOS ANGELES INTL (KLAX) LOS ANGELES, CA
LAXX NINE (SID) ICA RWY 25R

LOS ANGELES INTL (KLAX) LOS ANGELES, CA
LAXX NINE (SID) ICA RWY 25R





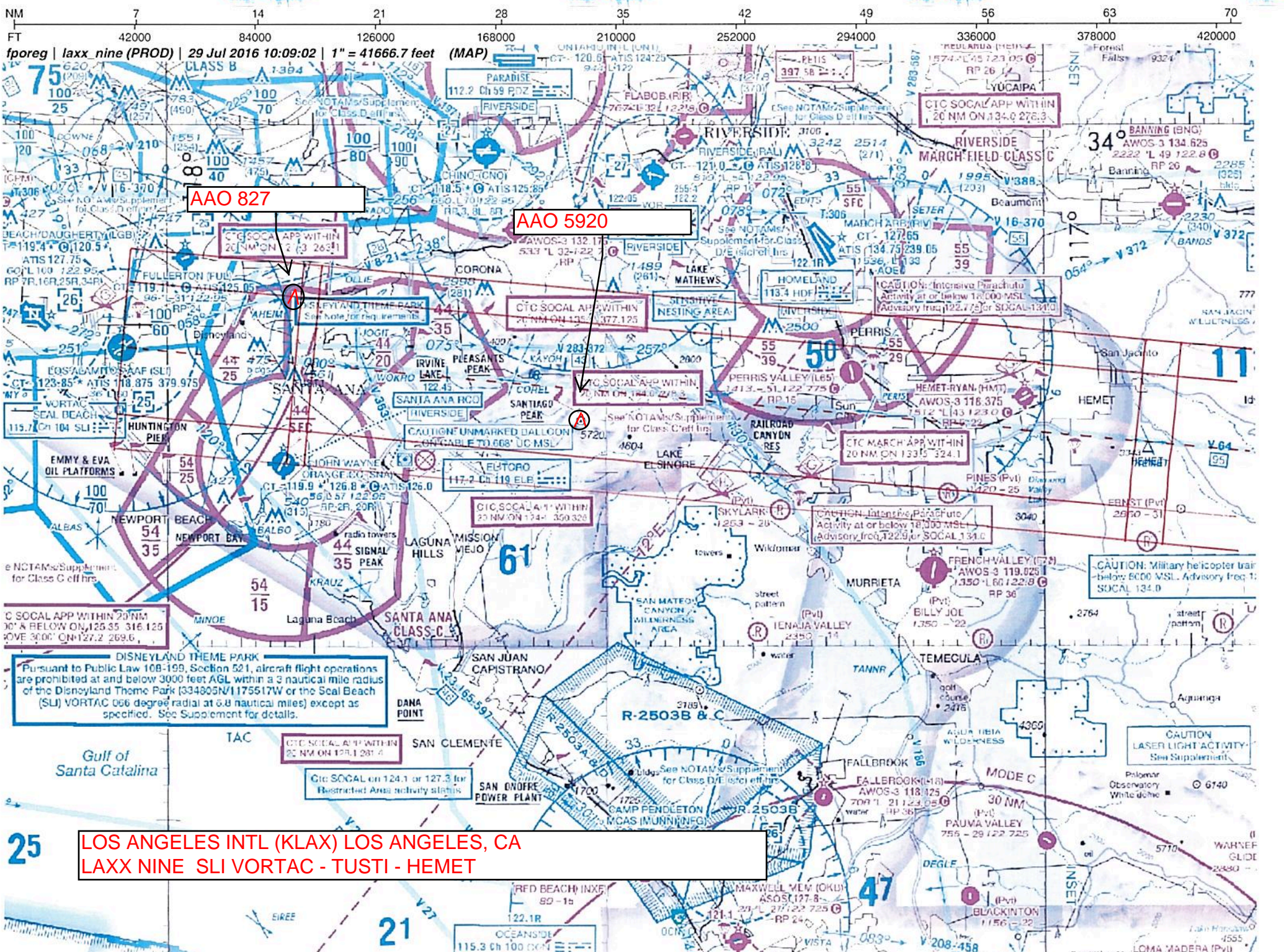




AAO 670

TWR 1051

LOS ANGELES INTL (KLAX) LOS ANGELES, CA
LAXX NINE OCN VORTAC - CARIF - MZB VORTAC



NM 7 14 21 28 35 42 49 56 63 70
FT 42000 84000 126000 168000 210000 252000 294000 336000 378000 420000

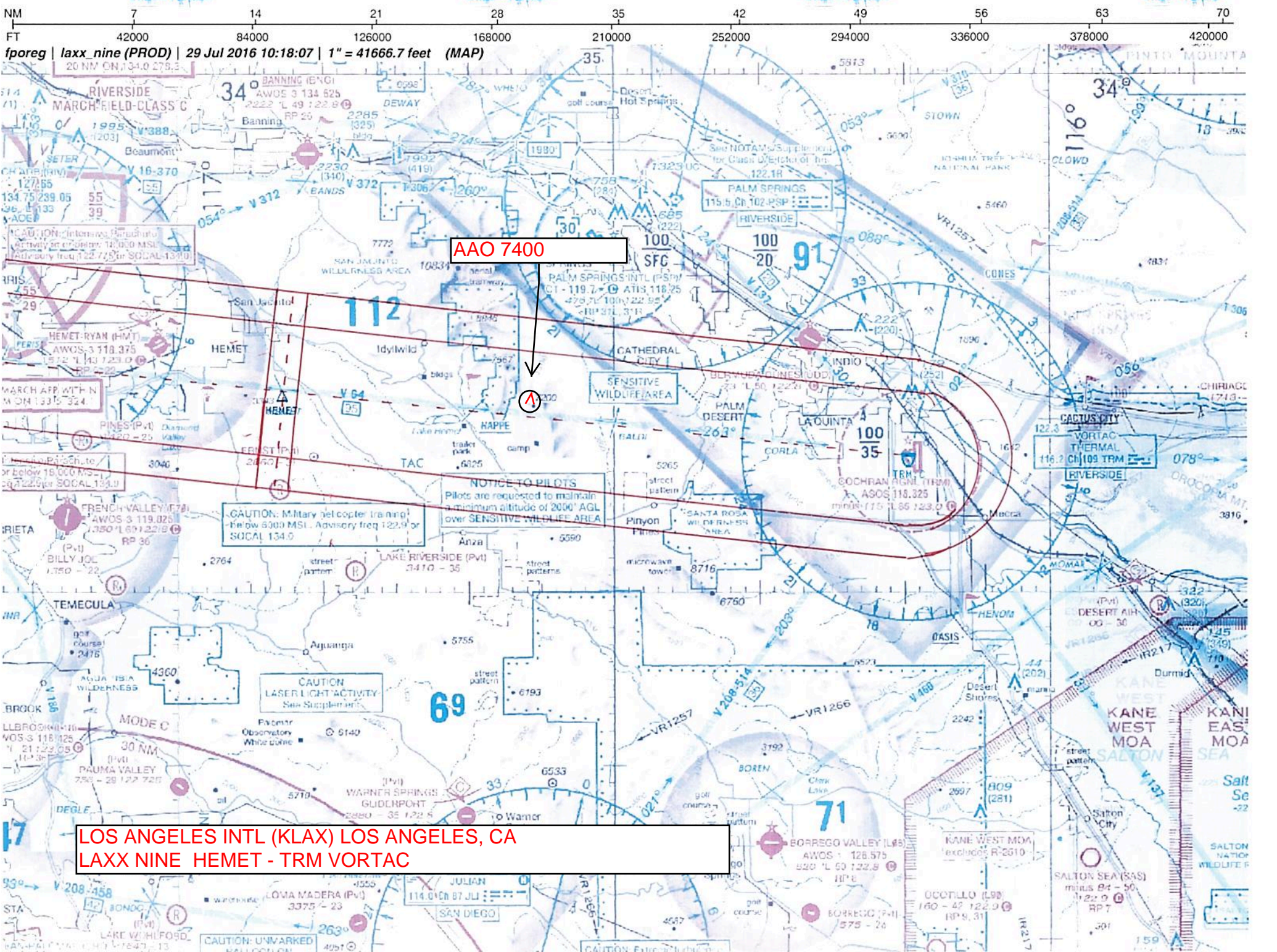
fporeg | lxxx nine (PROD) | 29 Jul 2016 10:09:02 | 1" = 41666.7 feet (MAP)

AAO 827

AAO 5920

DISNEYLAND THEME PARK
Pursuant to Public Law 108-199, Section 521, aircraft flight operations are prohibited at and below 3000 feet AGL within a 3 nautical mile radius of the Disneyland Theme Park (334805N/1175517W) or the Seal Beach (SLI) VORTAC 066 degree radial at 6.8 nautical miles) except as specified. See Supplement for details.

LOS ANGELES INTL (KLAX) LOS ANGELES, CA
LAXX NINE SLI VORTAC - TUSTI - HEMET



fporeg | laxe_nine (PROD) | 29 Jul 2016 10:18:07 | 1" = 41666.7 feet (MAP)
20 NM ON 134.0 278.3

AAO 7400

CAUTION: Intensive Parachute Activity at or above 18,000 MSL. Advisory freq 122.725 or SOCAL 134.0

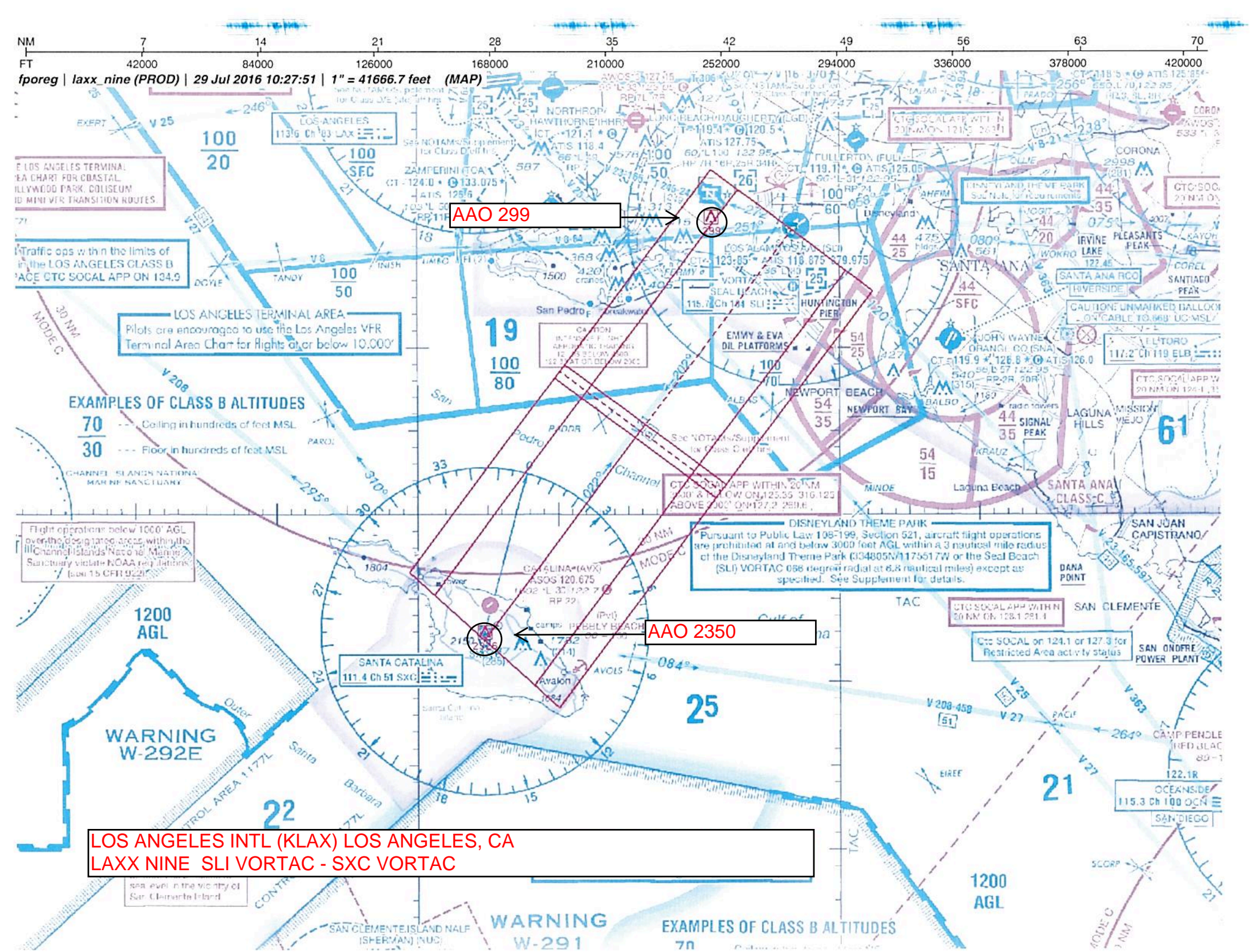
MARCH APP WITH N M ON 133.5 324

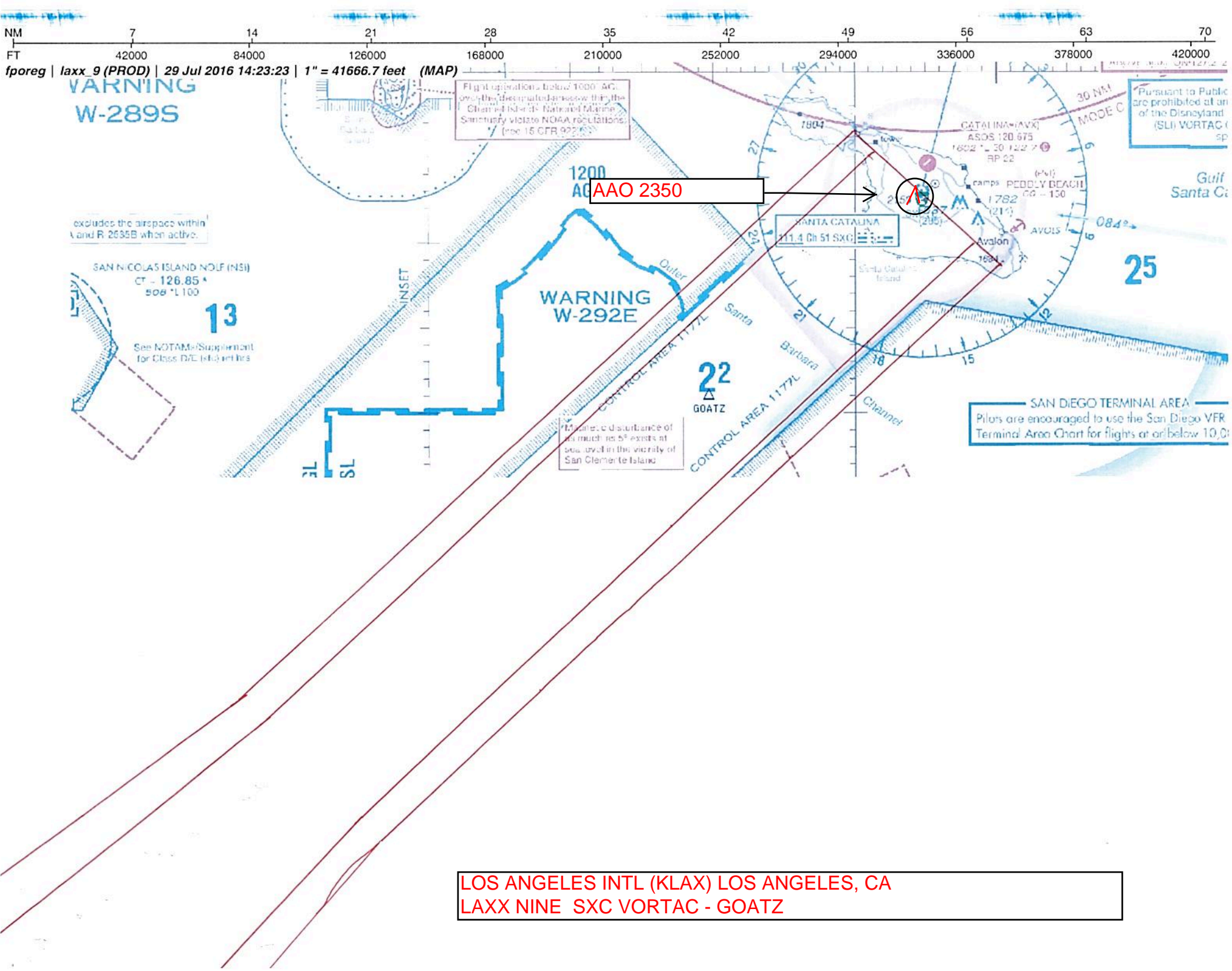
CAUTION: Military helicopter training. Below 5000 MSL. Advisory freq 122.9 or SOCAL 134.0

CAUTION: Military helicopter training. Below 5000 MSL. Advisory freq 122.9 or SOCAL 134.0

CAUTION: LASER LIGHT ACTIVITY. See Supplement

LOS ANGELES INTL (KLAX) LOS ANGELES, CA
LAXX NINE HEMET - TRM VORTAC





NM 7 14 21 28 35 42 49 56 63 70
FT 42000 84000 126000 168000 210000 252000 294000 336000 378000 420000

fporeg | laxx_9 (PROD) | 29 Jul 2016 14:23:23 | 1" = 41666.7 feet (MAP)

**WARNING
W-289S**

Flight operations below 1000' AGL over the designated airspace within the Channel Islands National Marine Sanctuary violate NOAA regulations (see 15 CFR 922.16)

AAO 2350

excludes the airspace within A and R 2635B when active.

SAN NICOLAS ISLAND NOLF (NSI)
CT - 126.85°
508° L 100

13

See NOTAMs/Supplement for Class D/E (shaded) entries

**WARNING
W-292E**

22
GOATZ

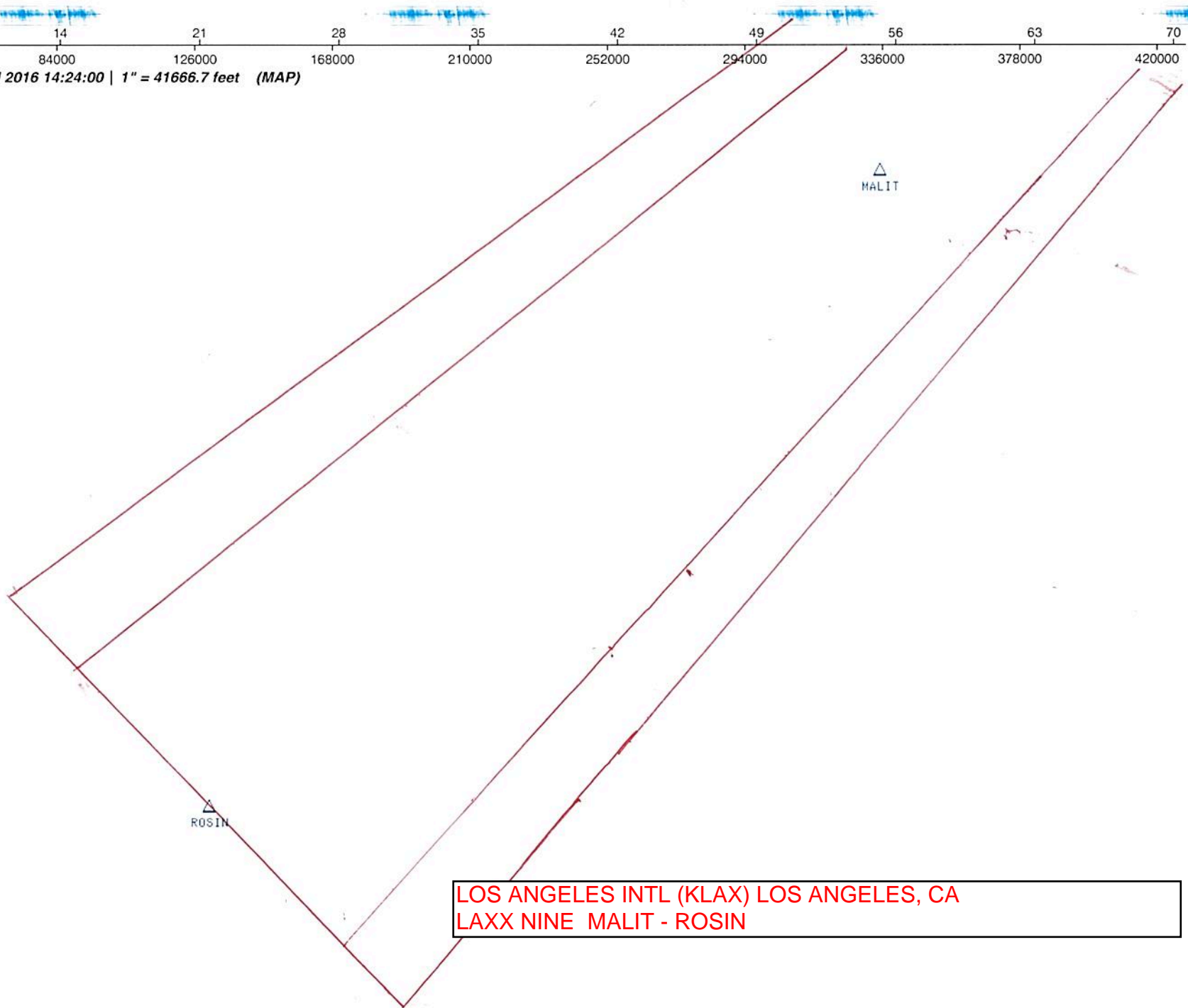
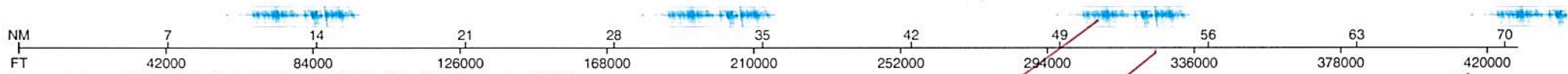
Measured disturbance of as much as 5° exists at sea level in the vicinity of San Clemente Island

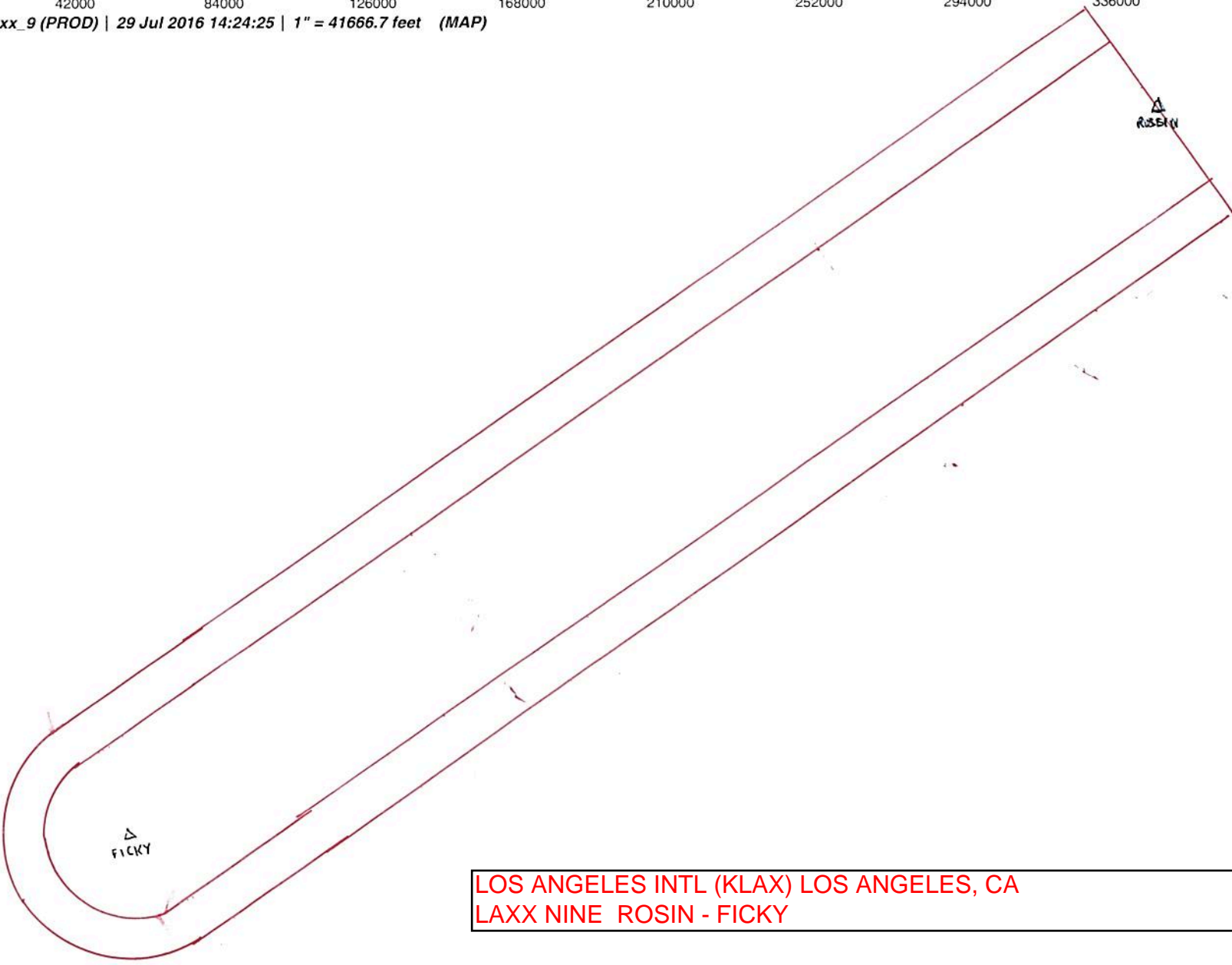
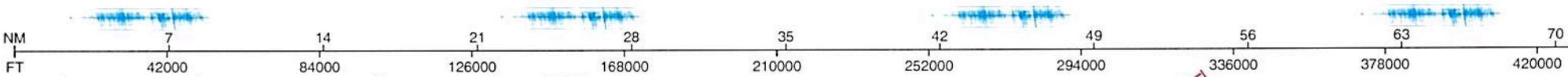
SANTA CATALINA
111.4 Ch 51 SXC

SAN DIEGO TERMINAL AREA
Pilots are encouraged to use the San Diego VFR Terminal Area Chart for flights at or below 10,000' AGL

25

LOS ANGELES INTL (KLAX) LOS ANGELES, CA
LAXX NINE SXC VORTAC - GOATZ





LOS ANGELES INTL (KLAX) LOS ANGELES, CA
LAXX NINE ROSIN - FICKY