

Flight Procedure Tracking Form		Action: FLIGHT CHECK	Task Type: IAP	Date Open: 11/16/2015	Task #: 2015111630320601003	Request #: 20151116303206
Procedure: APPROACH VOR/DME RWY 18 AMDT 1B			Airport ID: KTYQ	Airport: INDIANAPOLIS EXECUTIVE		Reimbursable #: NO
City: INDIANAPOLIS	ST: IN	GPS #:	Estimated Chart Date: 02/04/2016			FICO #:
Fac ID: N/A		Fac. Type:		Specialist: LANIER		
Procedure Review						
	Rec'd	Rel'd	Full Name	Comments		
Lead:						
QA:				<div style="text-align: right;"> <i>Wilson 11-23-2015</i> <i>Wilson 11-30-2015</i> <i>11/30/2015</i> <i>CHECKED</i> </div>		
Liaison:						
Procedure Comments:			Remark Type: INFORMATION			
ENROUTE-NON P-NOTAM DENY NIGHT LANDING RWY 18; REQUEST TABLE TOP CONTACT: PETER GETZ - 405-954-4919						

[Print](#)

Project Name: TYQ Night Restriction Runway 18

Project Reason: Adding "Night Landing Rwy 18 NA" Per MGR & FPT due to Rwy 18 20:1 penetrations. Compliance timeline exceeded.

Last Updated By: Donald Lanier

Last Updated At: 2015-11-30 14:41:34.536971

Status: Verified

6/6323

IFDC X/XXXX TYQ IAP INDIANAPOLIS EXECUTIVE, INDIANAPOLIS, IN. VOR/DME RWY 18, AMDT 1A...

CHART NOTE: NIGHT LANDING: RWY 18 NA. DELETE NOTE: VISIBILITY REDUCTION BY HELICOPTERS NA.

CHART NOTE: HELICOPTER VISIBILITY REDUCTION BELOW 1 SM NOT AUTHORIZED. THIS IS VOR/DME RWY 18, AMDT 1B. 1511301441-PERM

Kerry
3/4/16



INDIANAPOLIS, INDIANA

AL-5438 (FAA)

14261

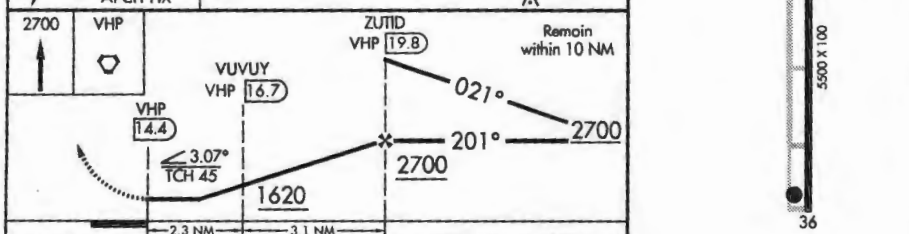
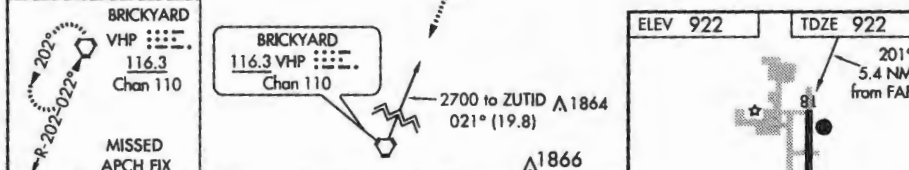
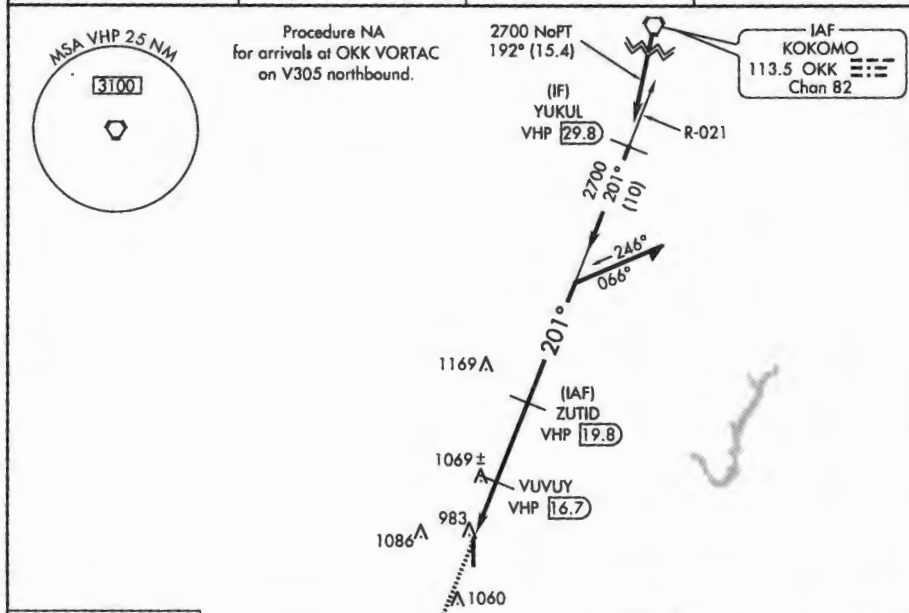
VORTAC VHP 116.3 Chan 110	APP CRS 201°	Rwy Idg 5500 TDZE 922 Apt Elev 922
--	------------------------	--

VOR/DME RWY 18 INDIANAPOLIS EXECUTIVE (TYQ)

Visibility reduction by helicopters NA. When local altimeter setting not received, use Indianapolis Init altimeter setting and increase all MDA 80 feet and S-18 Cats C/D visibilities ¼ mile.

MISSED APPROACH: Climb to 2700 direct VHP VORTAC and hold.

AWOS-3 120.725	INDIANAPOLIS APP CON 124.65 127.15 317.8	GCO 121.725	UNICOM 123.05 (CTAF)
--------------------------	--	-----------------------	--------------------------------



CATEGORY	A	B	C	D
S-18	1320-1 398 (400-1)		1320-1½ 398 (400-1½)	
CIRCLING	1360-1 438 (500-1)	1380-1 458 (500-1)	1380-1½ 458 (500-1½)	1480-2 558 (600-2)

INDIANAPOLIS, INDIANA
 Amdt 1A 18SEP14
 40°02'N-86°15'W
 INDIANAPOLIS EXECUTIVE (TYQ)
VOR/DME RWY 18

EC-2, 15 OCT 2015 to 12 NOV 2015

EC-2, 15 OCT 2015 to 12 NOV 2015