

<b>Flight Procedure Tracking Form</b>		<b>Action:</b> FLIGHT CHECK	<b>Task Type:</b> IAP	<b>Date Open:</b> 03/20/2017	<b>Task #:</b> 2015111314265301004	<b>Request #:</b> 20151113142653
<b>Procedure:</b> RNAV (GPS) Z RWY 5 AMDT 2			<b>Airport ID:</b> KORF	<b>Airport:</b> NORFOLK INTL		<b>Reimbursable #:</b> NO
<b>City:</b> NORFOLK	<b>ST:</b> VA	<b>GPS #:</b>	<b>Estimated Chart Date:</b> 10/12/2017		<b>FICO #:</b>	
<b>Fac ID:</b> N/A		<b>Fac. Type:</b>			<b>Specialist:</b> SCOTT BAGENSIE	
<b>Procedure Review</b>						
	<b>Rec'd</b>	<b>Rel'd</b>	<b>Full Name</b>	<b>Comments</b>		
<b>Lead:</b>	04/20/2017	07/26/2017	DAVID TEFFETELLER	QUALITY		
<b>QA:</b>	07/26/2017			10		
<b>Liaison:</b>				CHECKED		
<b>Procedure Comments:</b>			ENROUTE-NON			
			<b>Remark Type:</b> INFORMATION			
CONTACT: PATRICK MULQUEEN, TEAM 3 MANAGER, 405.954.4073 OR DAVID TEFFETELLER, TEAM 3 SUB-TEAM 4 MANAGER, 301.427.4767.						

WAAS CH <b>50222</b> <b>W05A</b>	APP CRS <b>047°</b>	Rwy Idg <b>7809</b> TDZE <b>26</b> Apt Elev <b>27</b>
--	------------------------	---

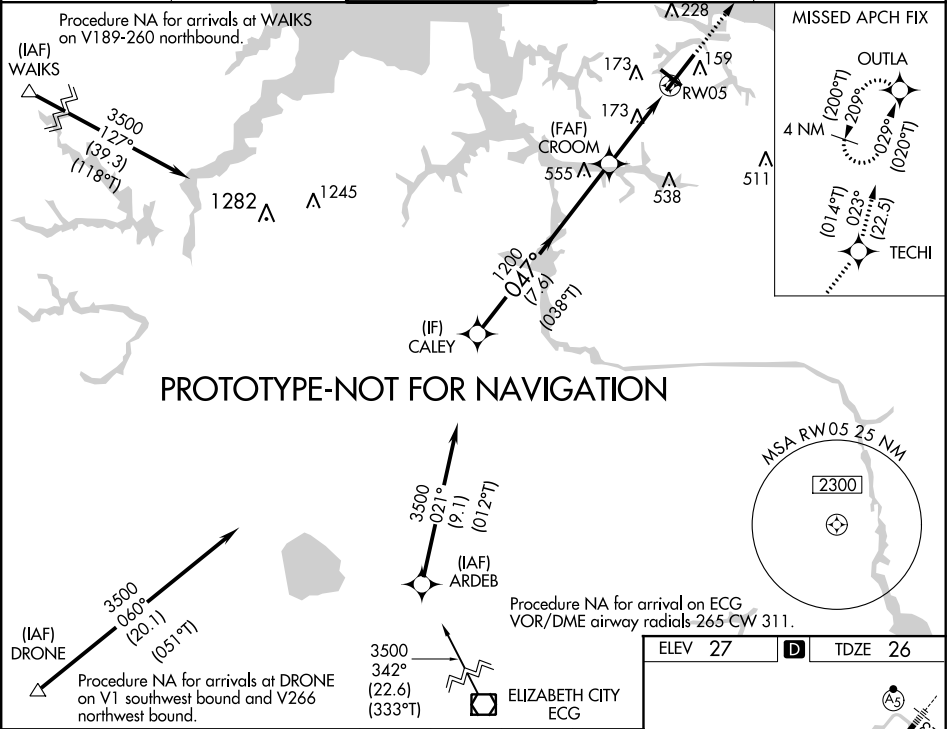
RNAV (GPS) Z RWY 5  
NORFOLK INTL (ORF)

**⚠** For uncompensated Baro-VNAV systems, LNAV/VNAV NA below -9°C (16°F) or above 54°C (130°F). DME/DME RNP-0.3 NA. For inoperative ALS, increase LNAV/VNAV all Cats visibility to RVR 4500 and LNAV Cats C and D to visibility to RVR 6000.

**MALSR**

**MISSED APPROACH:** Climb to 2000 direct TECHI then on track 023° to OUTLA and hold.

ATIS <b>127.15</b>	NORFOLK APP CON <b>118.9 353.7</b>	NORFOLK TOWER <b>120.8 257.8</b>	GND CON <b>121.9</b>	CLNC DEL <b>118.5</b>
-----------------------	---------------------------------------	-------------------------------------	-------------------------	--------------------------



	CALEY	CROOM	RW05	
	3500	1200	*1.1 NM to RW05	
	GP 3.00°			
	TCH 56			
	7.6 NM	2.4 NM	1.1 NM	
CATEGORY	A	B	C	D
LPV DA	226/18 200 (200-½)			
LNAV/VNAV DA	306/24 280 (300-½)			
LNAV MDA	440/24 414 (500-½)	440/40 414 (500-¾)		
CIRCLING	480-1 453 (500-1)	540-1 513 (600-1)	540-1½ 513 (600-1½)	900-2¾ 873 (900-2¾)

ELEV 27 **D** TDZE 26

TDZ/CL Rwy 5  
REIL Rwy 14 and 32  
HIRL Rwy 5-23  
MIRL Rwy 14-32



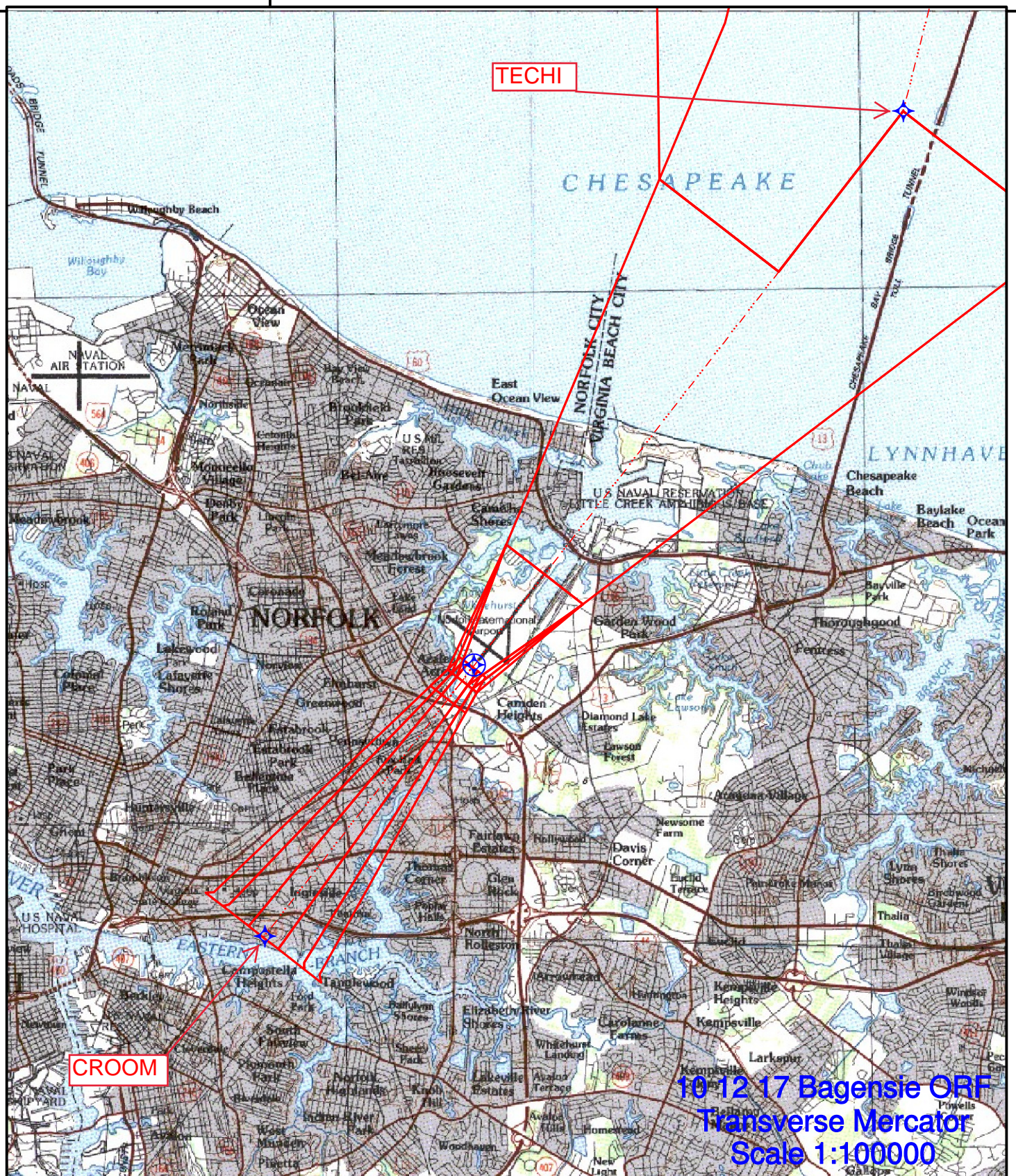


Airport ID	KORF	No	SEGMENT	OBSTRUCTION	ELEV
Airport Name	Norfolk INTL	6	Initial (WAKS-CALEY)	Tower (51-001802)	1282
City	Norfolk	8	Intermediate (CALEY-CROOM)	Tower (51-000431)	555
State	Virginia	11	LNAV Final	Tower (51-000279)	173
Procedure ID	RNAV (GPS) RWY 5	5	7:1 Obstacle	AAO	220
Amendment #	AMDT 2	12	Missed Level Surface	Tower (51-001347)	756
Map Scale	1:500,000	12	Missed Approach Holding	Tower (51-001347)	756
	Map 2 of 2 for 500K				



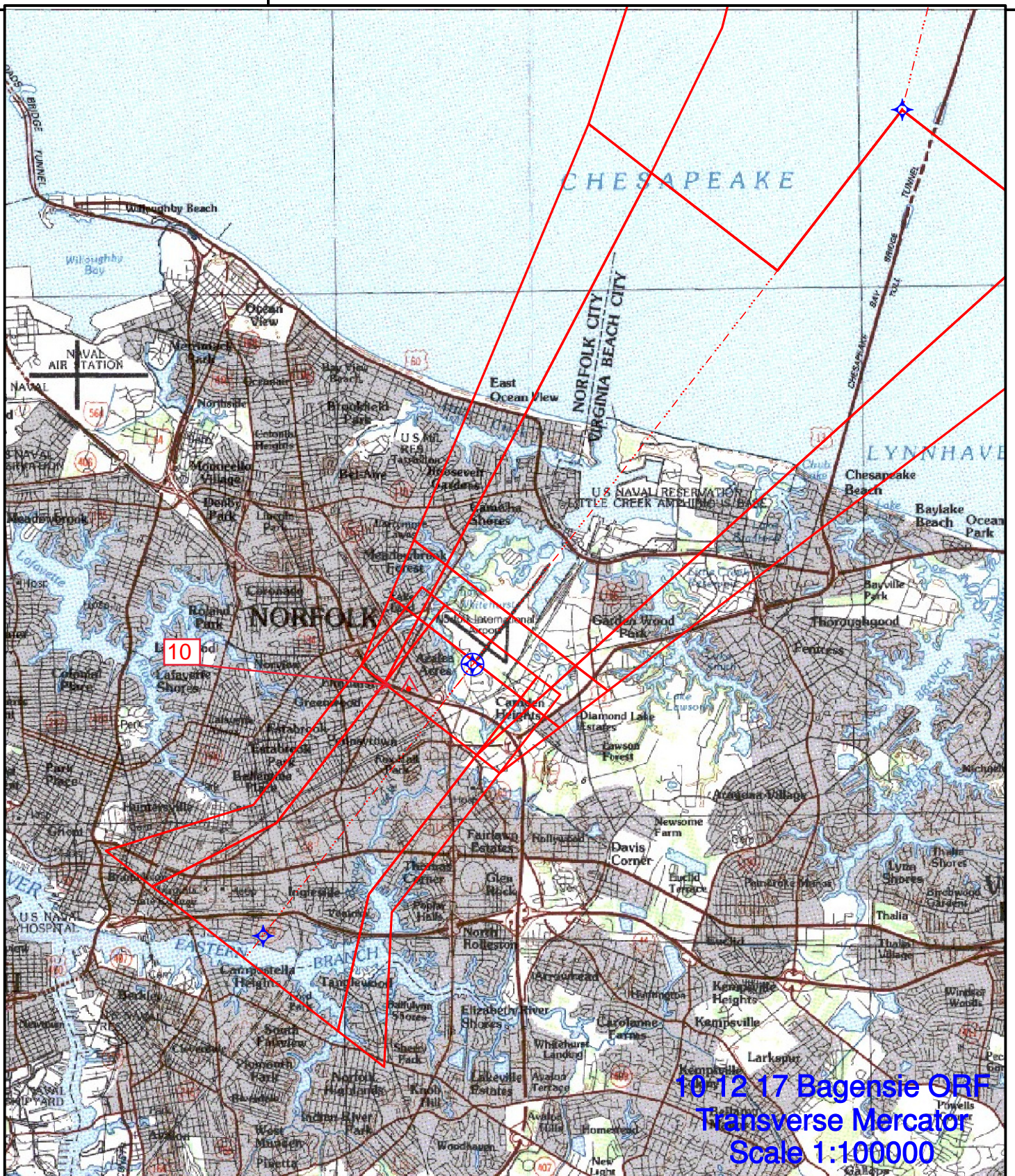
37°00'N

76°15'0"W



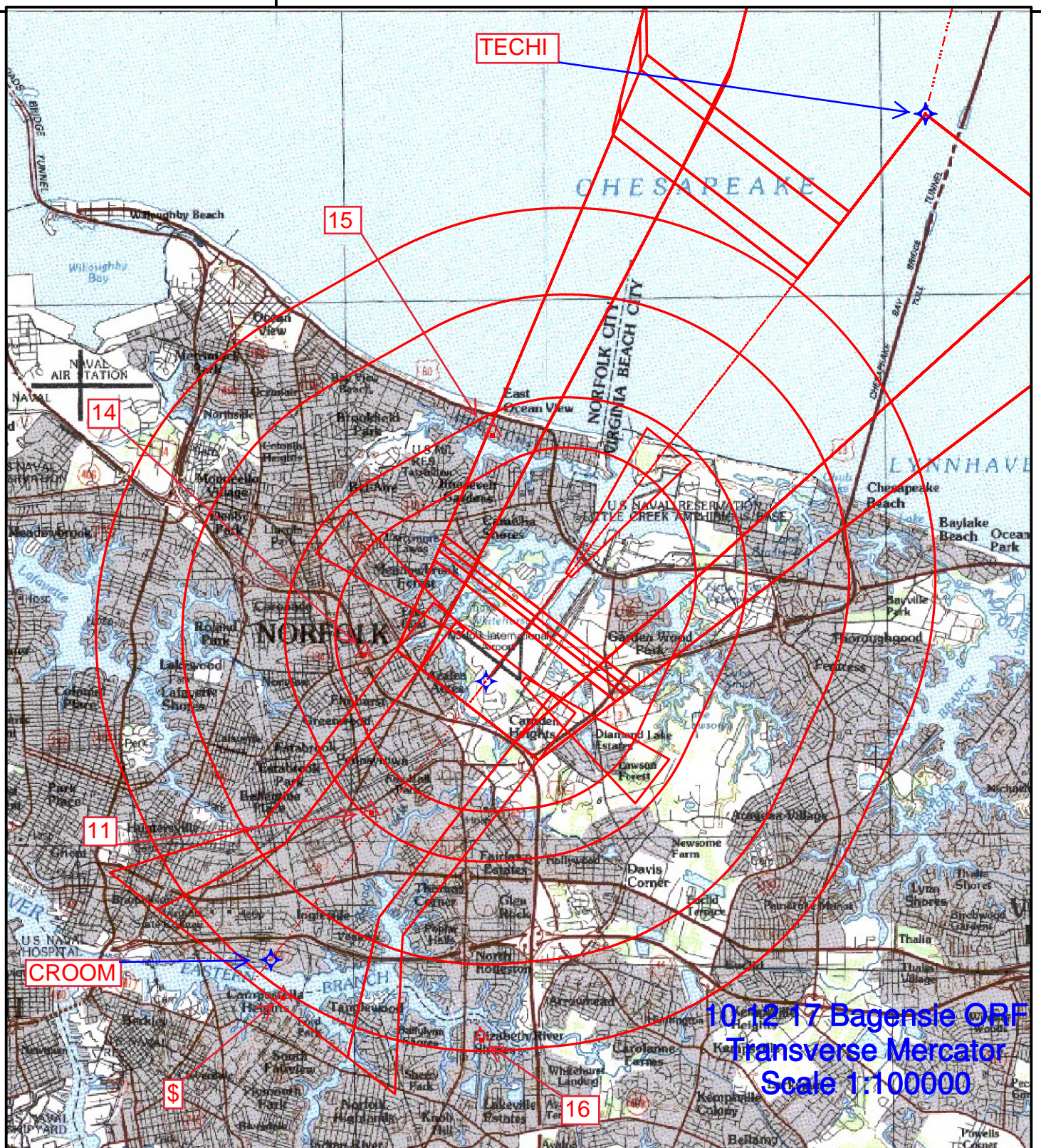
Airport ID	KORF	No	SEGMENT	OBSTRUCTION	ELEV
Airport Name	Norfolk INTL		LPV Final		ASC
City	Norfolk				
State	Virginia		Map Scale	1:100,000	
Procedure ID	RNAV (GPS) RWY 5		Amendment #	AMDT 2	





Airport ID	KORF	No	SEGMENT	OBSTRUCTION	ELEV
Airport Name	Norfolk INTL	10	LNAV/VNAV Final	Tower (51-002079)	145
City	Norfolk				
State	Virginia	Map Scale		1:100,000	
Procedure ID	RNAV (GPS) RWY 5	Amendment #		AMDT 2	





10 12 17 Bagensie ORF  
Transverse Mercator  
Scale 1:100000

Airport ID	KORF	No	SEGMENT	OBSTRUCTION	ELEV
Airport Name	Norfolk INTL	11	LNAV Final (FAF-SDF)	Tower (51-000279)	173
City	Norfolk	\$	7:1 Obstacle	AAO	220
State	Virginia	14	CAT A Circling	Tower (51-020396)	173
Procedure ID	RNAV (GPS) RWY 5	15	CAT B Circling	Tower (51-000560)	228
Amendment #	AMDT 2	15	CAT C Circling	Tower (51-000560)	228
Map Scale	1:100,000	16	CAT D Circling	Tower (51-000368)	538



# TERMINAL AIRSPACE DATA REQUIREMENTS

CITY:

STATE:

AIRPORT NAME:

ID:

PROCEDURE:

AMDT:

DOCKET # :

(96-AXX-X/Required/Not Required)

**ALL DIST TO 1/100 NM; ELEV TO NEAREST FT; COORD TO 1/100 SEC; DEG TO 1/100 DG.**

1. Distance from \_\_\_\_\_ to 1000' point \_\_\_\_\_

(Enter THLD, FAF, ARP, FACILITY, as appropriate)

2. Width of \_\_\_\_\_ segment at 1000' point \_\_\_\_\_

(Enter appropriate segment , final, intermediate, etc.)

3. True Course of \_\_\_\_\_ segment containing 1000' point \_\_\_\_\_

4. High Terrain in \_\_\_\_\_ segment containing 1000' point \_\_\_\_\_

5. Distance from \_\_\_\_\_ to 1500' point \_\_\_\_\_

(If 1500' point in PT maneuvering area or holding pattern note in remarks)

6. Width of \_\_\_\_\_ segment at 1500' point \_\_\_\_\_

7. True Course of \_\_\_\_\_ segment containing 1500' point \_\_\_\_\_

8. High Terrain in \_\_\_\_\_ segment containing 1500' point \_\_\_\_\_

9. Threshold Coordinates (if straight-in) ... \_\_\_\_\_ / \_\_\_\_\_

10. ARP Coordinates ..... \_\_\_\_\_ / \_\_\_\_\_

11. Runway Approach End and distance furthest from ARP.....RWY \_\_\_\_\_

Distance \_\_\_\_\_ NM

12. FAF Coordinates ..... \_\_\_\_\_ / \_\_\_\_\_

(Click to Select)

**REMARKS:**