

Flight Procedure Tracking Form		Action: FLIGHT CHECK	Task Type: IAP	Date Open: 07/29/2016	Task #: 2015110933278102033	Request #: 20151109332781
Procedure: RNAV (GPS) Y RWY 20R AMDT 3			Airport ID: KBNA	Airport: NASHVILLE INTL		Reimbursable #: NO
City: NASHVILLE	ST: TN	GPS #:	Estimated Chart Date: 03/02/2017		FICO #:	
Fac ID: N/A		Fac. Type:		Specialist: SEAN BARBEE		
Procedure Review						
	Rec'd	Rel'd	Full Name	Comments		
Lead:	03/11/2016	10/24/2016	DONALD LANIER	QUALITY Digitally signed by		
QA:	10/24/2016			24 DAVID W SAUER		
Liaison:				CHECKED Dec 02, 2016		
Procedure Comments:			Remark Type: INFORMATION			
ASSIGNED MAGVAR: KBNA: 3W/2010 ACTIVE DATA USED FOR KBNA CONTACT: MARLON ROBINSON/DON LANIER, 405.954.3636/8242 <div style="text-align: right;"> QUALITY 12 CHECKED .ARI moved to East coding ckd SAT 12/5/2016/mem </div>						

WAAS CH 78411 W20A	APP CRS 201°	Rwy Idg TDZE Apt Elev	7702 578 599
----------------------------------------	------------------------	-----------------------------	-----------------------------------------

RNAV (GPS) Y RWY 20R
NASHVILLE INTL (BNA)

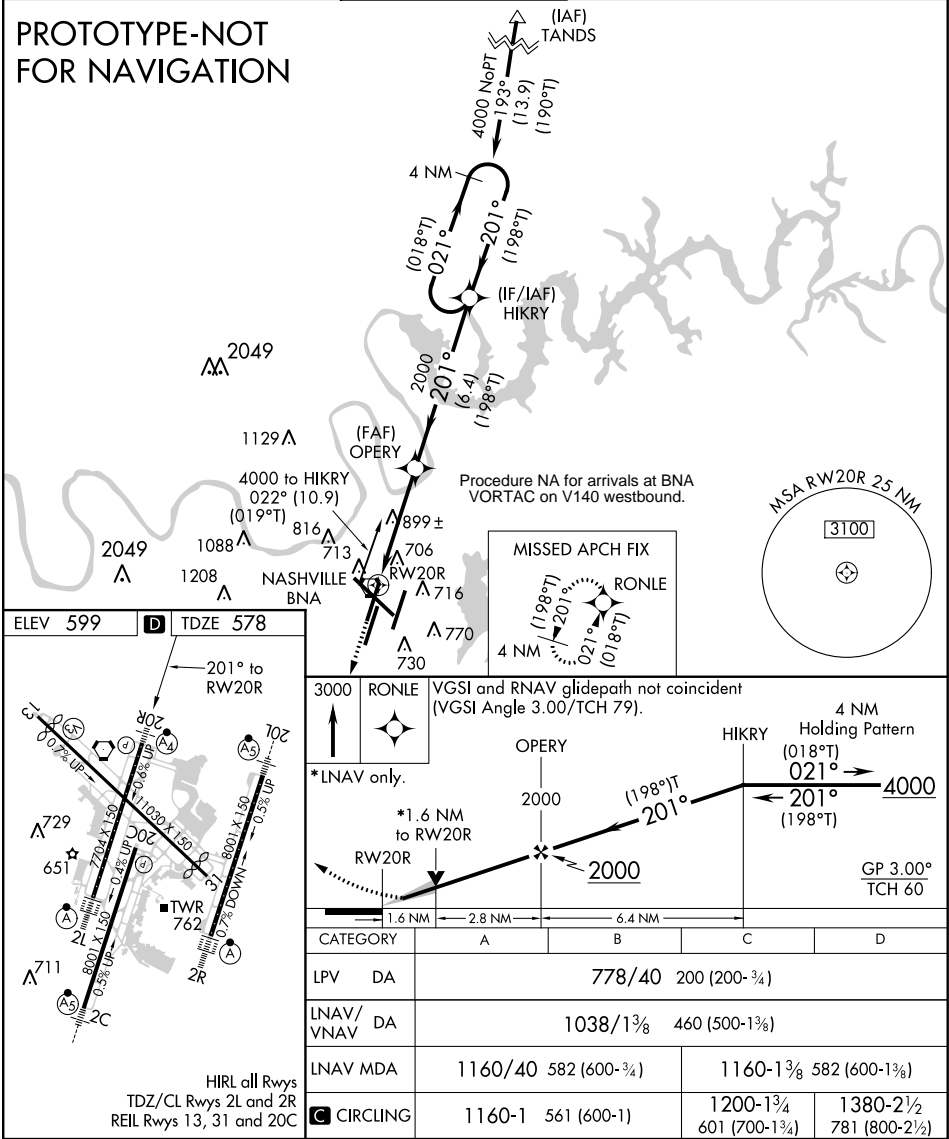
⚠ For uncompensated Baro-VNAV systems, LNAV/VNAV NA below -11°C (13°F) or above 54°C (130°F). Simultaneous approach authorized with Rwy 20L. DME/DME RNP-0.3 NA. LNAV procedure NA during simultaneous operations. Use of FD or AP providing RNAV track guidance required during simultaneous operations. For inoperative ALS, increase LNAV/VNAV CAT D visibility to 1 5/8 SM and LNAV CATS C and D visibility to 1 3/4 SM.

MALSF

MISSED APPROACH:
Climb to 3000 direct
RONLE and hold.

ATIS 135.1	NASHVILLE APP CON 118.4 360.7	NASHVILLE TOWER 118.6 257.8	GND CON 121.9 348.6	CLNC DEL 126.05	CPDLC
----------------------	-----------------------------------------	---------------------------------------	-------------------------------	---------------------------	-------

PROTOTYPE-NOT
FOR NAVIGATION



WAAS CH 78411 W20A	APP CRS 201°	Rwy Idg TDZE 578 Apt Elev 599
----------------------------------------	------------------------	---------------------------------------------------

RNAV (GPS) Y RWY 20R

NASHVILLE INTL (BNA)

⚠

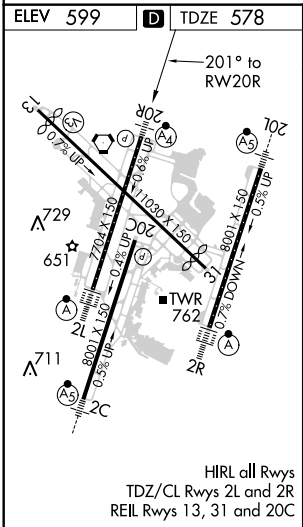
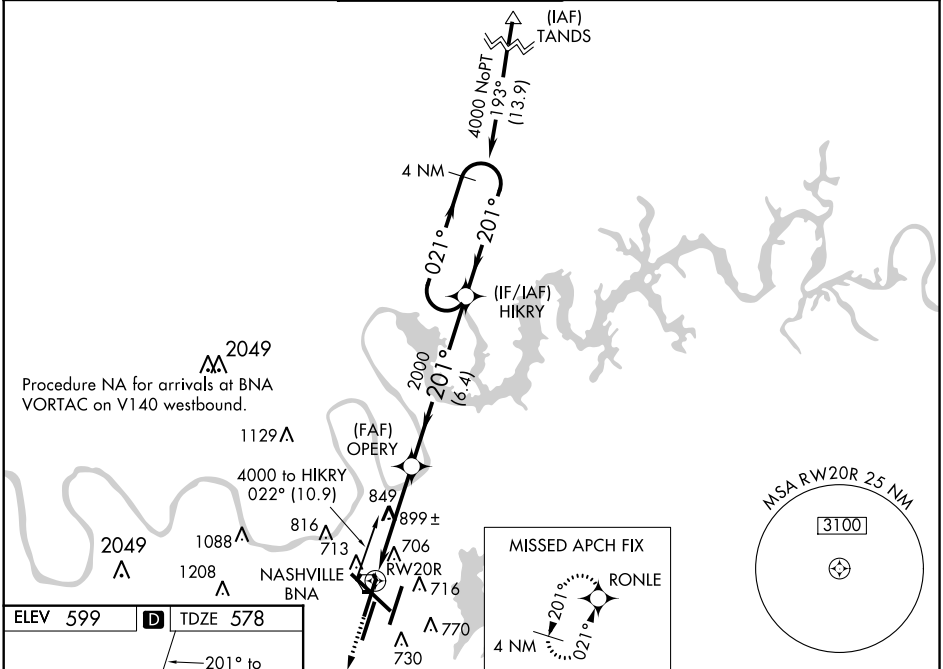
For uncompensated Baro-VNAV systems, LNAV/VNAV NA below -11°C (13°F) or above 54°C (130°F). For inoperative MALSF, increase LNAV/VNAV all Cats visibility to 1½ and LNAV Cats A/B visibility to RVR 5500. DME/DME RNP-0.3 NA. Simultaneous approach authorized with Rwy 20L. LNAV procedure NA during simultaneous operations. Use of FD or AP providing RNAV track guidance required during simultaneous operations.

MALSF

⚠

MISSED APPROACH:
Climb to 3000 direct
RONLE and hold.

ATIS 135.1	NASHVILLE APP CON 118.4 360.7	NASHVILLE TOWER 118.6 257.8	GND CON 121.9 348.6	CLNC DEL 126.05	CPDLC
----------------------	-----------------------------------------	---------------------------------------	-------------------------------	---------------------------	-------

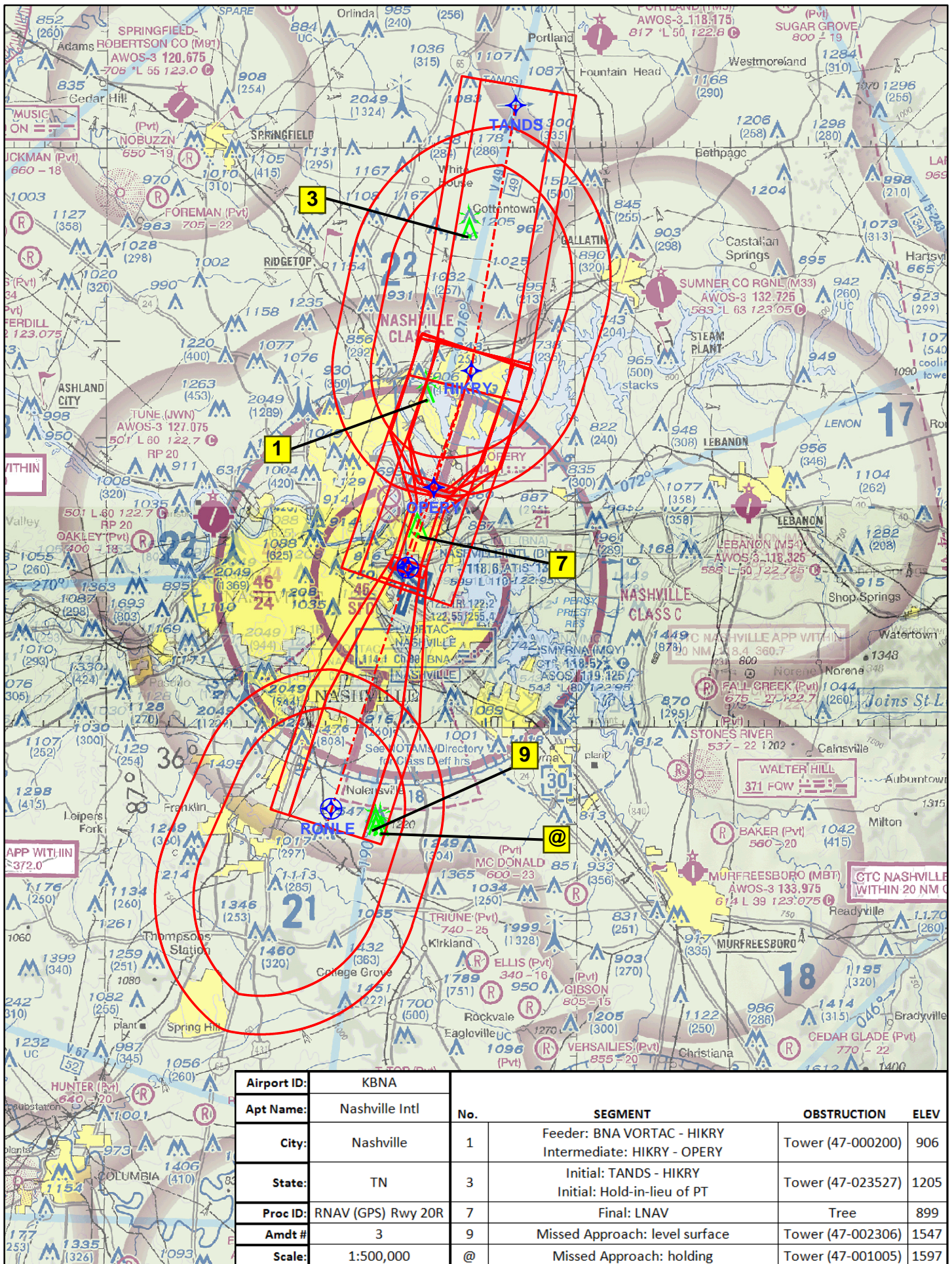


CATEGORY		A	B	C	D
LPV	DA	778/40 200 (200-¾)			
LNAV/VNAV	DA	1038/60 460 (500-1½)			
LNAV	MDA	1160/40 582 (600-¾)		1160-1½ 582 (600-1½)	
CIRCLING		1160-1 561 (600-1)		1200-1¾ 601 (700-1¾)	1380-2½ 781 (800-2½)

RNAV (GPS) Y RWY 20R

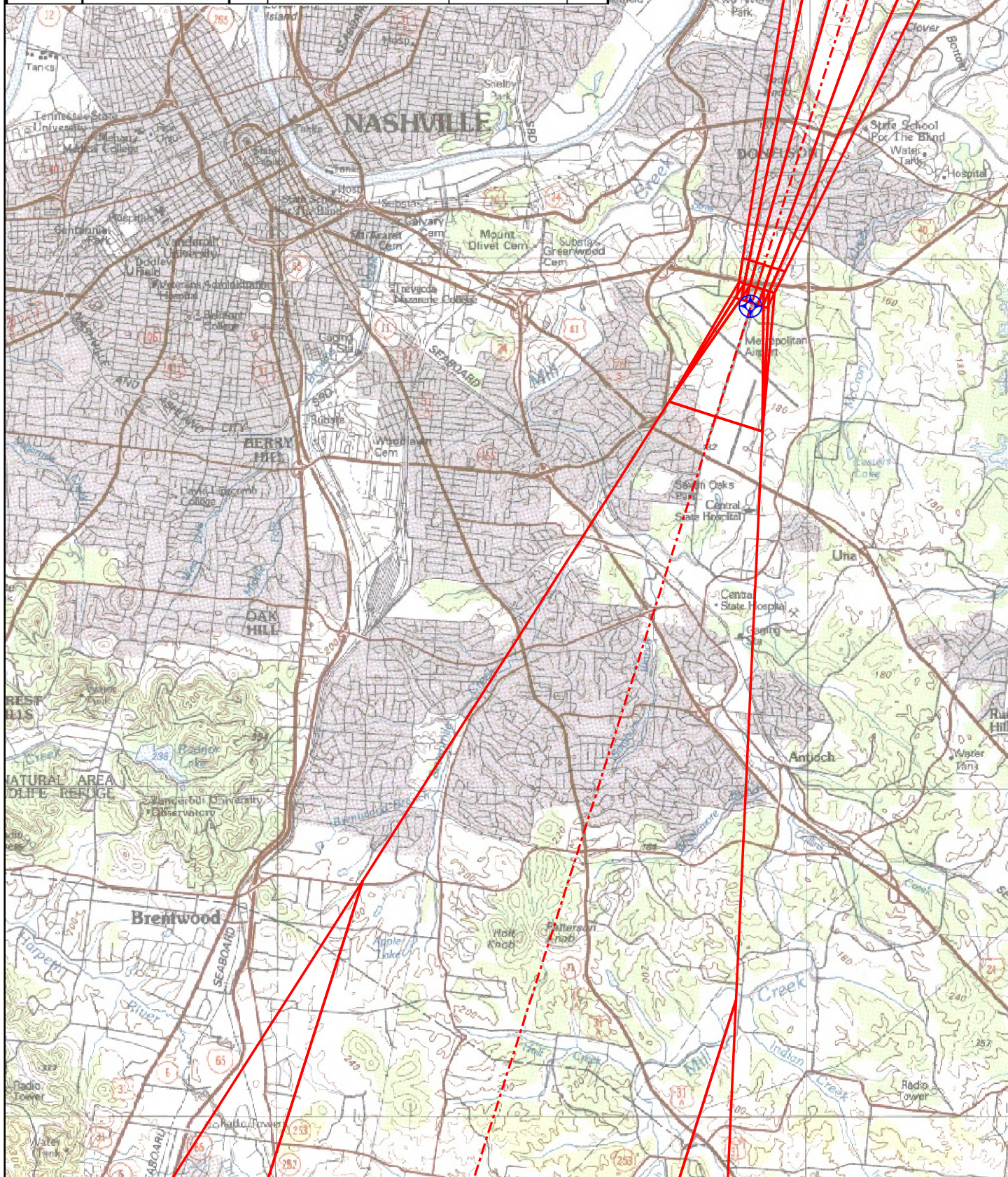
SE-1, 21 JUL 2016 to 18 AUG 2016

SE-1, 21 JUL 2016 to 18 AUG 2016



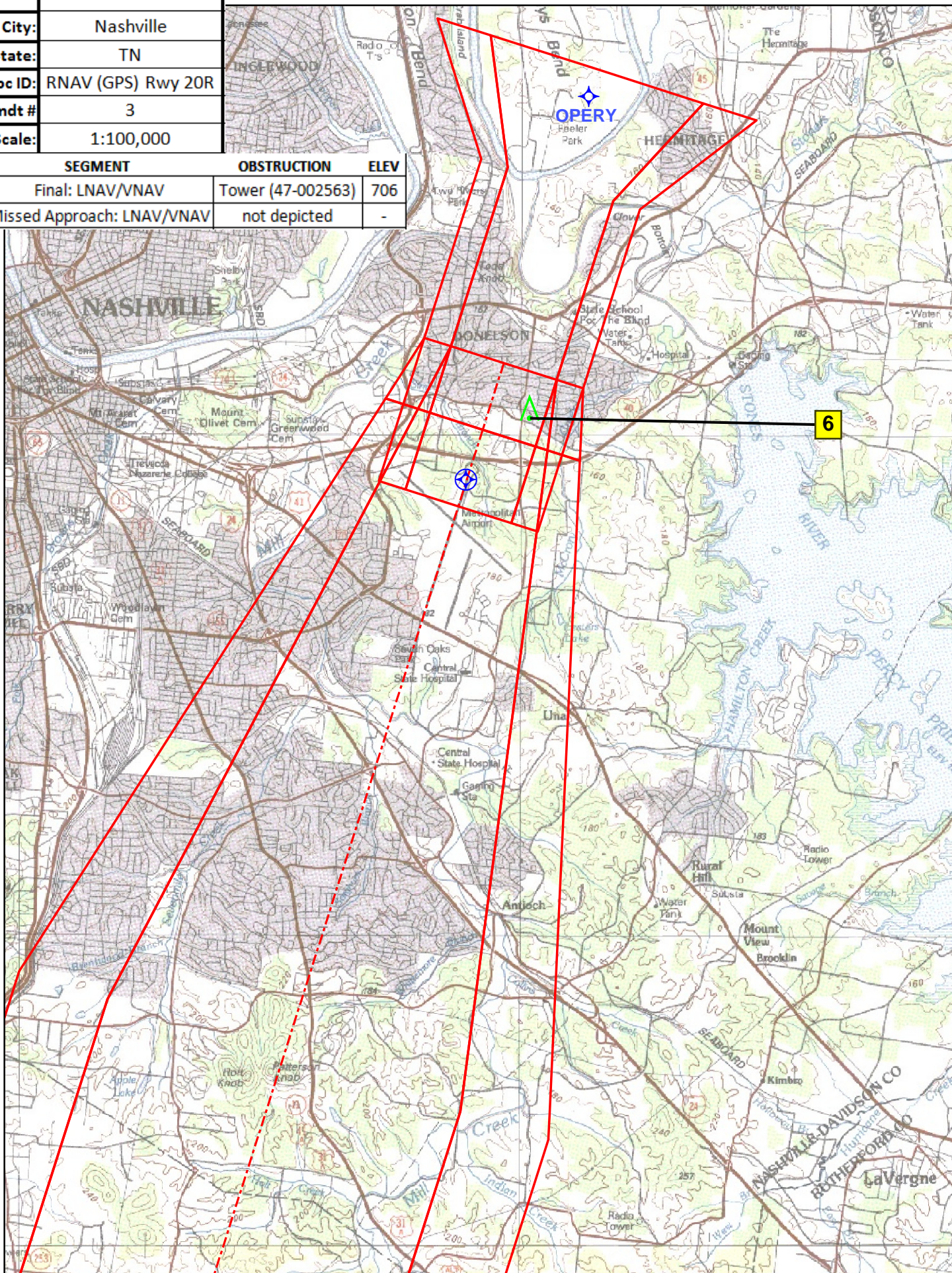
Airport ID:	KBNA				
Apt Name:	Nashville Intl	No.	SEGMENT	OBSTRUCTION	ELEV
City:	Nashville	1	Feeder: BNA VORTAC - HIKRY Intermediate: HIKRY - OPERY	Tower (47-000200)	906
State:	TN	3	Initial: TANDS - HIKRY Initial: Hold-in-lieu of PT	Tower (47-023527)	1205
Proc ID:	RNAV (GPS) Rwy 20R	7	Final: LNAV	Tree	899
Amdt #	3	9	Missed Approach: level surface	Tower (47-002306)	1547
Scale:	1:500,000	@	Missed Approach: holding	Tower (47-001005)	1597

Airport ID:	KBNA				
Apt Name:	Nashville Intl	No.	SEGMENT	OBSTRUCTION	ELEV
City:	Nashville	-	Final: LPV	-	ASC
State:	TN	-	Missed Approach: LPV	not depicted	-
Proc ID:	RNAV (GPS) Rwy 20R				
Amdt #	3				
Scale:	1:100,000				

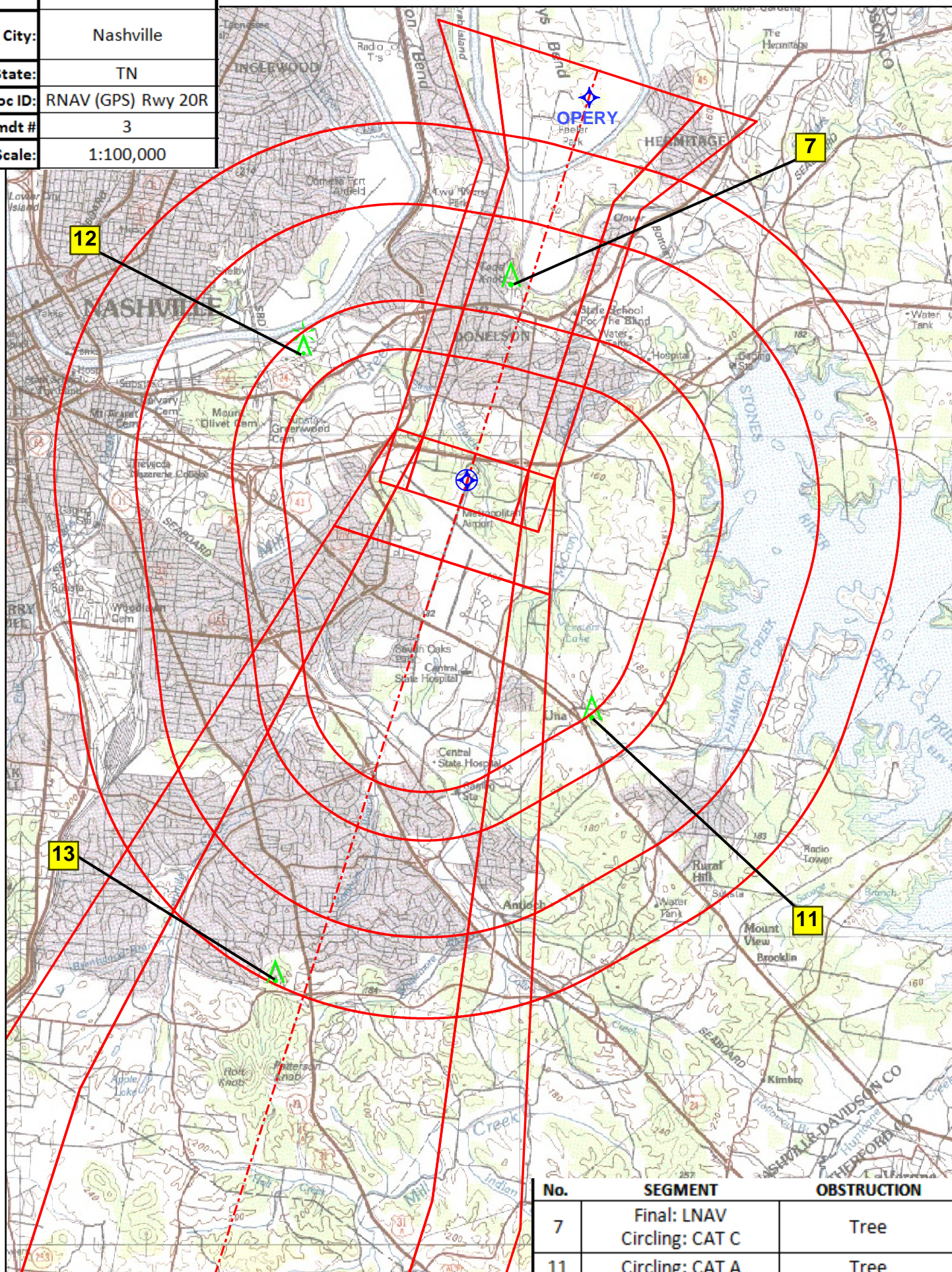


Airport ID:	KBNA
Apt Name:	Nashville Intl
City:	Nashville
State:	TN
Proc ID:	RNAV (GPS) Rwy 20R
Amdt #	3
Scale:	1:100,000

No.	SEGMENT	OBSTRUCTION	ELEV
6	Final: LNAV/VNAV	Tower (47-002563)	706
-	Missed Approach: LNAV/VNAV	not depicted	-



Airport ID:	KBNA
Apt Name:	Nashville Intl
City:	Nashville
State:	TN
Proc ID:	RNAV (GPS) Rwy 20R
Amdt #	3
Scale:	1:100,000



No.	SEGMENT	OBSTRUCTION	ELEV
7	Final: LNAV Circling: CAT C	Tree	899
11	Circling: CAT A	Tree	789
12	Circling: CAT B	Tower (47-000499)	816
13	Circling: CAT D	AAO	1079

TERMINAL AIRSPACE DATA REQUIREMENTS

CITY: **NASHVILLE**

STATE: **TN**

AIRPORT NAME: **NASHVILLE INTL**

ID: **KBNA**

PROCEDURE: **RNAV (GPS) RWY 20R**

AMDT: **3**

DOCKET#: **NOT REQUIRED**
(96-AXX-X/Required/Not Required)

ALL DIST TO 1/100 NM; ELEV TO NEAREST FT; COORD TO 1/100 SEC; DEG TO 1/100 DG.

- | | | | |
|-------------------------------------------------------------------------------------------|---------------------------------|--------------------------------|---------------|
| 1. Distance from | <u>THLD</u> | to 1000' point | <u>3.72</u> |
| <small>(Enter THLD, FAF, ARP, FACILITY, as appropriate)</small> | | | |
| 2. Width of | <u>FINAL</u> | segment at 1000' point | <u>1.20</u> |
| <small>(Enter appropriate segment, final, intermediate, etc.)</small> | | | |
| 3. True Course of | <u>FINAL</u> | segment containing 1000' point | <u>197.67</u> |
| 4. High Terrain in | <u>FINAL</u> | segment containing 1000' point | <u>799</u> |
| 5. Distance from | <u>THLD</u> | to 1500' point | <u>6.90</u> |
| <small>(If 1500' point in PT maneuvering area or holding pattern note in remarks)</small> | | | |
| 6. Width of | <u>INTERMEDIATE</u> | segment at 1500' point | <u>4.00</u> |
| 7. True Course of | <u>INTERMEDIATE</u> | segment containing 1500' point | <u>197.67</u> |
| 8. High Terrain in | <u>INTERMEDIATE</u> | segment containing 1500' point | <u>647</u> |
| 9. Threshold Coordinates (if straight-in) ... | <u>360816.23N / 0864042.84W</u> | | |
| 10. ARP Coordinates | <u>360728.10N / 0864041.40W</u> | | |
| 11. Runway Approach End and distance furthest from ARP | RWY | <u>02C</u> | |
| | Distance | <u>1.35</u> | NM |
| 12. FAF Coordinates | <u>361225.08N / 0863905.13W</u> | | |

REMARKS: Approach/Drawing attached.