

|   |               |                                |   |                                 |                                       |                                     |
|---|---------------|--------------------------------|---|---------------------------------|---------------------------------------|-------------------------------------|
| <b>Flight Procedure Tracking Form</b>   |               | <b>Action:</b><br>FLIGHT CHECK | <b>Task Type:</b><br>IAP                | <b>Date Open:</b><br>10/22/2015 | <b>Task #:</b><br>2015102232411301002 | <b>Request #:</b><br>20151022324113 |
| <b>Procedure:</b> RNAV (GPS) RWY 35 AMDT 2  |               |                                | <b>Airport ID:</b><br>K2K4              | <b>Airport:</b><br>SCOTT FIELD  |                                       | <b>Reimbursable #:</b><br>NO        |
| <b>City:</b> MANGUM   | <b>ST:</b> OK | <b>GPS #:</b>                  | <b>Estimated Chart Date:</b> 07/21/2016 |                                 | <b>FICO #:</b>                        |                                     |
| <b>Fac ID:</b> N/A  |               | <b>Fac. Type:</b>              |   |                                 | <b>Specialist:</b> PABLO ORTIZ        |                                     |
| <b>Procedure Review</b>   |               |                                |   |                                 |                                       |                                     |
|   | <b>Rec'd</b>  | <b>Rel'd</b>                   | <b>Full Name</b>                        | <b>Comments</b>                 |                                       |                                     |
| <b>Lead:</b>  | 01/14/2016    |                                |   |                                 |                                       |                                     |
| <b>QA:</b>  |               | 4/27, 5/3, 5/11                | CLARK                                   |                                 |                                       |                                     |
| <b>Liaison:</b>   |               |                                |   |                                 |                                       |                                     |
| <b>Procedure Comments:</b> ENROUTE <b>Remark Type:</b> INFORMATION<br><br>ASSIGNED MAG VAR:<br>K2K4: OLD 8E - NEW 5E<br><br>PENDING DATA USED FOR K2K4 AIRPORT AND RUNWAYS<br><br>CONTACT: JACOB POWERS AJV-5421/PETER GETZ AJV-5422/THOMAS KIRKPATRICK, AJV-5423, 405.954.8702/4919/0654 |               |                                |   |                                 |                                       |                                     |



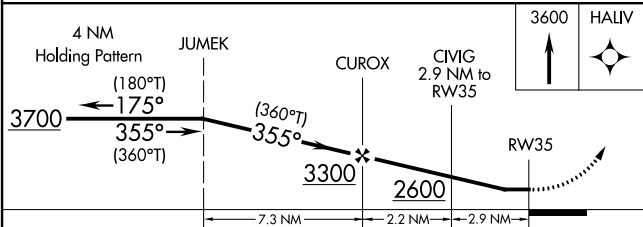
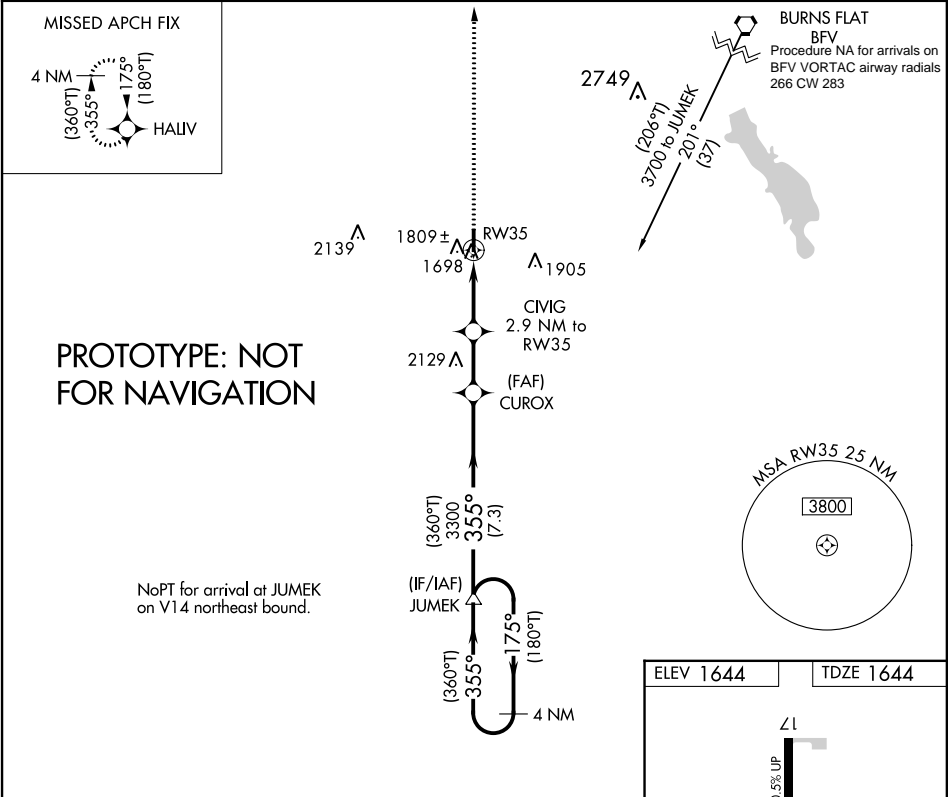
|                          |                 |  |
|--------------------------|-----------------|--|
| WAAS<br>CH 77739<br>W35A | APP CRS<br>355° | Rwy Idg 4199<br>TDZE 1644<br>Apt Elev 1644 |
|--------------------------|-----------------|--|

RNAV (GPS) RWY 35

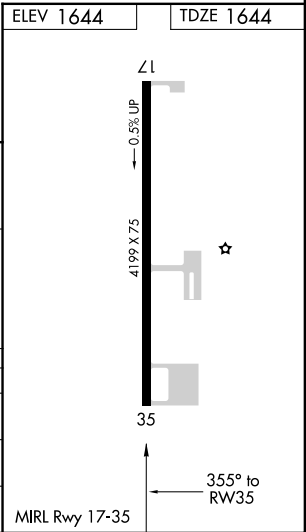
SCOTT FIELD (2K4)

|  |
|--|
| <div><div><div></div><div>NA</div></div><div>DME/DME RNP-0.3 NA. RWY 35 Helicopter visibility reduction below ¾ SM NA. Use Altus/Quartz Mountain Rgnl altimeter setting; When not received, use Hobart altimeter setting.</div></div> <div>MISSED APPROACH: Climb to 3600 direct HALIV and hold.</div> |
|--|

|  |                                 |               |
|--|---------------------------------|---------------|
| ALTUS/QUARTZ MOUNTAIN RGNL ASOS<br>118.825 | ALTUS APP CON★<br>125.1 257.725 | CTAF<br>122.9 |
|--|---------------------------------|---------------|



| CATEGORY | A      | B           | C                     | D  |
|----------|--------|-------------|-----------------------|----|
| LP MDA   | 2020-1 | 376 (400-1) |                       | NA |
| LNAV MDA | 2140-1 | 496 (500-1) |                       | NA |
| CIRCLING | 2220-1 | 576 (600-1) | 2340-2<br>696 (700-2) | NA |



# TERMINAL AIRSPACE DATA REQUIREMENTS

CITY: **MANGUM**

STATE: **OK**

AIRPORT NAME: **SCOTT FIELD**

ID: **K2K4**

PROCEDURE: **RNAV (GPS) RWY 35**

AMDT: **2**

DOCKET#: **NOT REQUIRED**

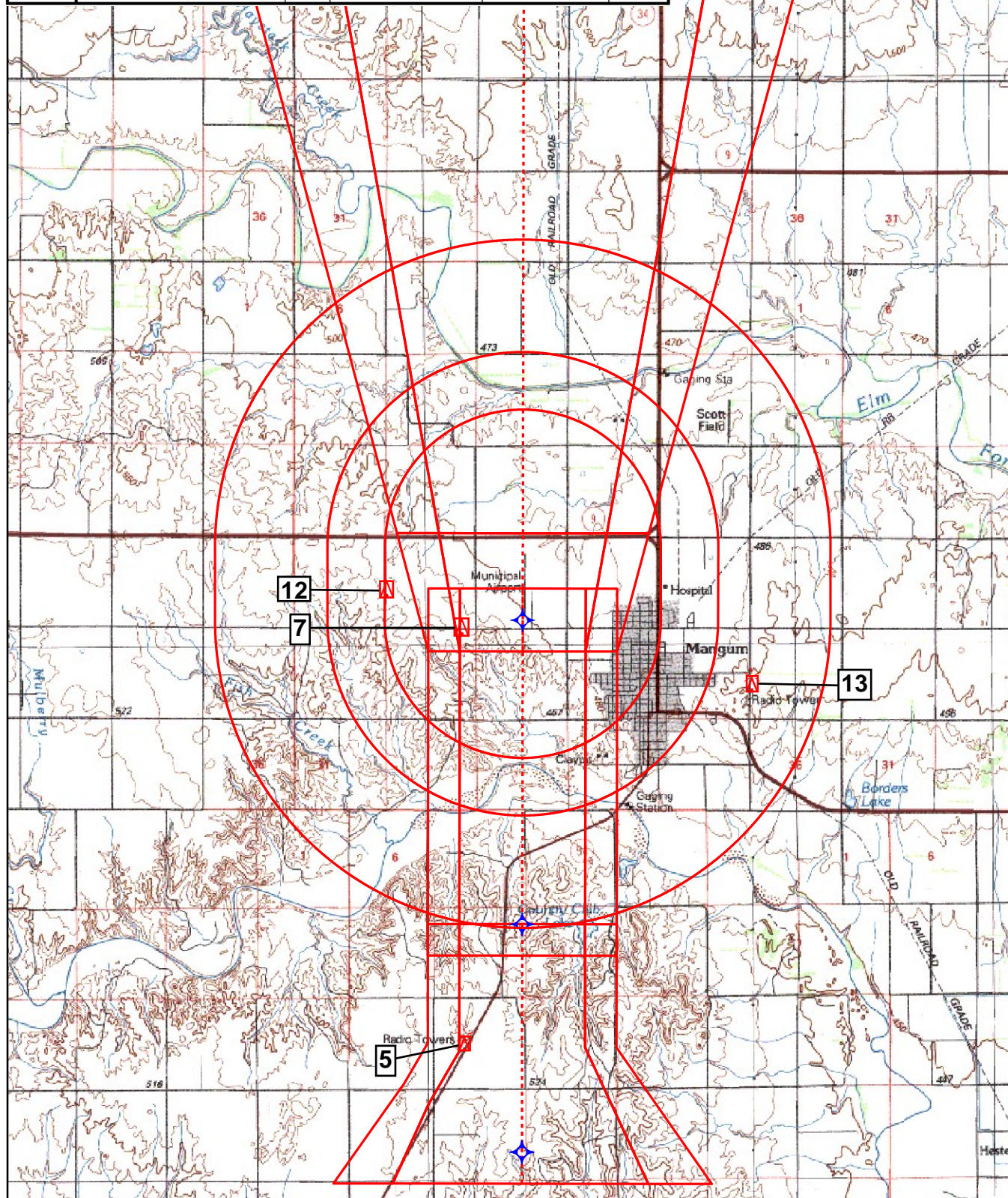
(96-AXX-X/Required/Not Required)

**ALL DIST TO 1/100 NM; ELEV TO NEAREST FT; COORD TO 1/100 SEC; DEG TO 1/100 DG.**

- |  |   |                                |                    |
|--|---|--------------------------------|--------------------|
| 1. Distance from   | <u>THLD</u>   | to 1000' point                 | <u>3.07</u>        |
|  | <small>(Enter THLD, FAF, ARP, FACILITY, as appropriate)</small>                           |                                |                    |
| 2. Width of  | <u>FINAL</u>  | segment at 1000' point         | <u>1.20</u>        |
|  | <small>(Enter appropriate segment, final, intermediate, etc.)</small>                     |                                |                    |
| 3. True Course of  | <u>FINAL</u>  | segment containing 1000' point | <u>000.09</u>      |
| 4. High Terrain in   | <u>FINAL</u>  | segment containing 1000' point | <u>1742</u>        |
| 5. Distance from   | <u>THLD</u>   | to 1500' point                 | <u>4.87</u>        |
|  | <small>(If 1500' point in PT maneuvering area or holding pattern note in remarks)</small> |                                |                    |
| 6. Width of  | <u>FINAL</u>  | segment at 1500' point         | <u>1.95</u>        |
| 7. True Course of  | <u>FINAL</u>  | segment containing 1500' point | <u>000.09</u>      |
| 8. High Terrain in   | <u>FINAL</u>  | segment containing 1500' point | <u>1742</u>        |
| 9. Threshold Coordinates (if straight-in) ...                | <u>345312.65N</u>   | /                              | <u>0993141.60W</u> |
| 10. ARP Coordinates .....                                    | <u>345333.40N</u>   | /                              | <u>0993141.60W</u> |
| 11. Runway Approach End and distance furthest from ARP ..... |   | RWY                            | <u>17</u>          |
|  |   | Distance                       | <u>0.35</u> NM     |
| 12. FAF Coordinates .....                                    | <u>344807.66N</u>   | /                              | <u>0993142.18W</u> |

**REMARKS: Approach/Drawing attached.**

|             |                          |     |                        |                   |
|-------------|--------------------------|-----|------------------------|-------------------|
| Airport ID: | <b>K2K4</b>              |     |                        |                   |
| Apt Name:   | <b>SCOTT FIELD</b>       |     |                        |                   |
| City:       | <b>MANGUM</b>            | 5.  | <b>LNAV FINAL</b>      | <b>TOWER</b> 2117 |
| State:      | <b>OK</b>                | 7.  | <b>LNAV FINAL STEP</b> | <b>TREE</b> 1809  |
| Proc ID:    | <b>RNAV (GPS) RWY 35</b> | 12. | <b>CIRC CAT A/B</b>    | <b>TREE</b> 1839  |
| Amdt #:     | <b>2</b>                 | 13. | <b>CIRC CAT C</b>      | <b>TOWER</b> 1905 |
| Scale:      | <b>1:100,000</b>         |     |                        |                   |









|             |                          |     |                       |              |             |
|-------------|--------------------------|-----|-----------------------|--------------|-------------|
| Airport ID: | <b>K2K4</b>              |     |                       |              |             |
| Apt Name:   | <b>SCOTT FIELD</b>       |     |                       |              |             |
| City:       | <b>MANGUM</b>            | 1.  | <b>FEEDER</b>         | <b>AAO</b>   | <b>2205</b> |
| State:      | <b>OK</b>                | 8.  | <b>HOLD-IN-LIEU</b>   | <b>AAO</b>   | <b>1877</b> |
| Proc ID:    | <b>RNAV (GPS) RWY 35</b> | 3.  | <b>INTERMEDIATE</b>   | <b>TOWER</b> | <b>2064</b> |
| Amdt #:     | <b>2</b>                 | 5.  | <b>LP FINAL</b>       | <b>TOWER</b> | <b>2117</b> |
|             |                          | 6.  | <b>LP FINAL STEP</b>  | <b>POLE</b>  | <b>1698</b> |
|             |                          | 10. | <b>MISSED LVL SFC</b> | <b>TOWER</b> | <b>2063</b> |
| Scale:      | <b>1:500,000</b>         | H.  | <b>MISSED HOLDING</b> | <b>AAO</b>   | <b>2139</b> |

