

Flight Procedure Tracking Form		Action: FLIGHT CHECK	Task Type: SID	Date Open: 10/14/2015	Task #: 2015101428270602001	Request #: 20151014282706
Procedure: SID GTLKE (RNAV) ONE CLEVELAND OH CLE			Airport ID: KCLE	Airport: CLEVELAND-HOPKINS INTL		Reimbursable #: NO
City: CLEVELAND	ST: OH	GPS #:	Estimated Chart Date: 05/24/2018		FICO #: 1206062	
Fac ID: N/A		Fac. Type:		Specialist: HEIDI SNIDER		
Procedure Review						
	Rec'd	Rel'd	Full Name	Comments		
Lead:	11/08/2017	02/12/2018	DION LANCIA	QUALITY		
QA:	02/12/2018	02/16/2018	DAVID DANNER	3		
Liaison:	02/16/2018	02/20/2018	MARY MCDONALD	CHECKED		
Procedure Comments:			ENROUTE	Remark Type: INFORMATION		
<p>CLE/DTW METROPLEX ACTIVE DATA USED FOR KCLE DP DEVELOPMENT. 02/23/18: THIS IS AN UPDATED COPY OF THE FORM DEVELOPED ON 11/28/17. JH 1. CHANGED 8260-15B, ENROUTE TRANSITION NAME FROM GTLKE TO DAIFE ON GTLKE1.DAIFE. 2. CHANGED 8260-15B, ENROUTE TRANSITION NAME FROM GTLKE TO YABRO ON GTLKE1.YABRO. 3. ADDED CHART NOTE: BAGEL TRANSITION: FOR AIRCRAFT LANDING MDW ONLY, OR AS ASSIGNED BY ATC. 4. ADDED CHART NOTE: DAIFE TRANSITION: FOR AIRCRAFT LANDING ORD ONLY, OR AS ASSIGNED BY ATC. CONTACT DION LANCIA: 405-9541267</p>						

PROTOTYPE-NOT FOR NAVIGATION

GTIKE ONE DEPARTURE (RNAV)
(GTIKE1, GTIKE) FIG

CLEVELAND, OHIO
CLEVELAND-HOPKINS INTL (CLE)
GTIKE ONE DEPARTURE (RNAV)

D-ATIS
132.375
CLNC DEL
125.05 273.45
CPDLC
GND CON
6R/24L, 10/28 121.7 273.45
6L/24R 133.6 273.45
CLEVELAND DEP CON
128.25 346.325
CLEVELAND TOWER
6R/24L, 10/28 120.9 273.45
6L/24R 124.5 273.45
CLEVELAND APP CON
6R/24L, 28 124.0 354.025
6L/24R, 10 126.55 354.025

**TOP ALTITUDE:
14000**

TAKEOFF MINIMUMS

Rwys 6L/R, 24L/R, 28: Standard with a minimum climb
of 500' per NM to 1300.

Rwys 10: Standard with a minimum climb
of 500' per NM to 1600.

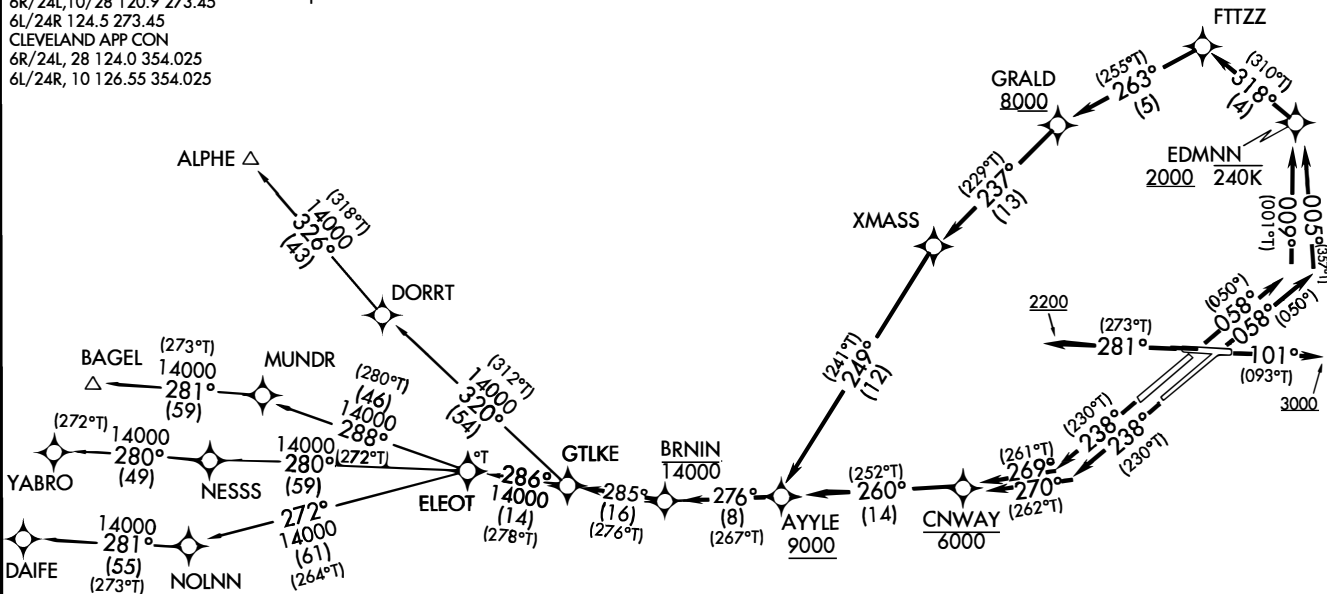
NOTE: RADAR required.

NOTE: RNAV 1.

NOTE: DME/DME/IRU or GPS required.

NOTE: BAGEL TRANSITION: FOR AIRCRAFT
LANDING MDW ONLY, OR AS ASSIGNED BY ATC.

NOTE: DAIFE TRANSITION: FOR AIRCRAFT
LANDING ORD ONLY, OR AS ASSIGNED BY ATC.



NOTE: Chart not to scale.

(NARRATIVE ON FOLLOWING PAGE)

(GTIKE1, GTIKE) FIG
GTIKE ONE DEPARTURE (RNAV)
AL-84 (FAA)

CLEVELAND-HOPKINS INTL (CLE)
CLEVELAND, OHIO

GTLKE ONE DEPARTURE (RNAV)



DEPARTURE ROUTE DESCRIPTION

TAKEOFF RWY 06L: Climb on heading 058° to intercept course 009° to cross EDMNN at or above 2000 and at or below 240K, then on track 318° to FTTZZ, then on track 263° to cross GRALD at or above 8000, then on track 237° to XMASS, then on track 249° to cross AYYLE at or above 9000, thence...

TAKEOFF RWY 06R: Climb on heading 058° to intercept course 005° to cross EDMNN at or above 2000 and at or below 240K, then on track 318° to FTTZZ, then on track 263° to cross GRALD at or above 8000, then on track 237° to XMASS, then on track 249° to cross AYYLE at or above 9000, thence...

TAKEOFF RWY 10: Climb on heading 101° to 3000, then as assigned by ATC for RADAR vectors to cross AYYLE at or above 9000, thence...

TAKEOFF RWY 24L: Climb on heading 238° to intercept course 270° to cross CNWAY at or below 6000, then on track 260° to cross AYYLE at or above 9000, thence...

TAKEOFF RWY 24R: Climb on heading 238° to intercept course 269° to cross CNWAY at or below 6000, then on track 260° to cross AYYLE at or above 9000, thence...

TAKEOFF RWY 28: Climb on heading 281° to 2200, then as assigned by ATC for RADAR vectors to cross AYYLE at or above 9000, thence...

...on track 276° to cross BRNIN at or below 14000, then on track 285° to GTLKE then on (transition). Maintain 14000, expect filed altitude ten minutes after departure.

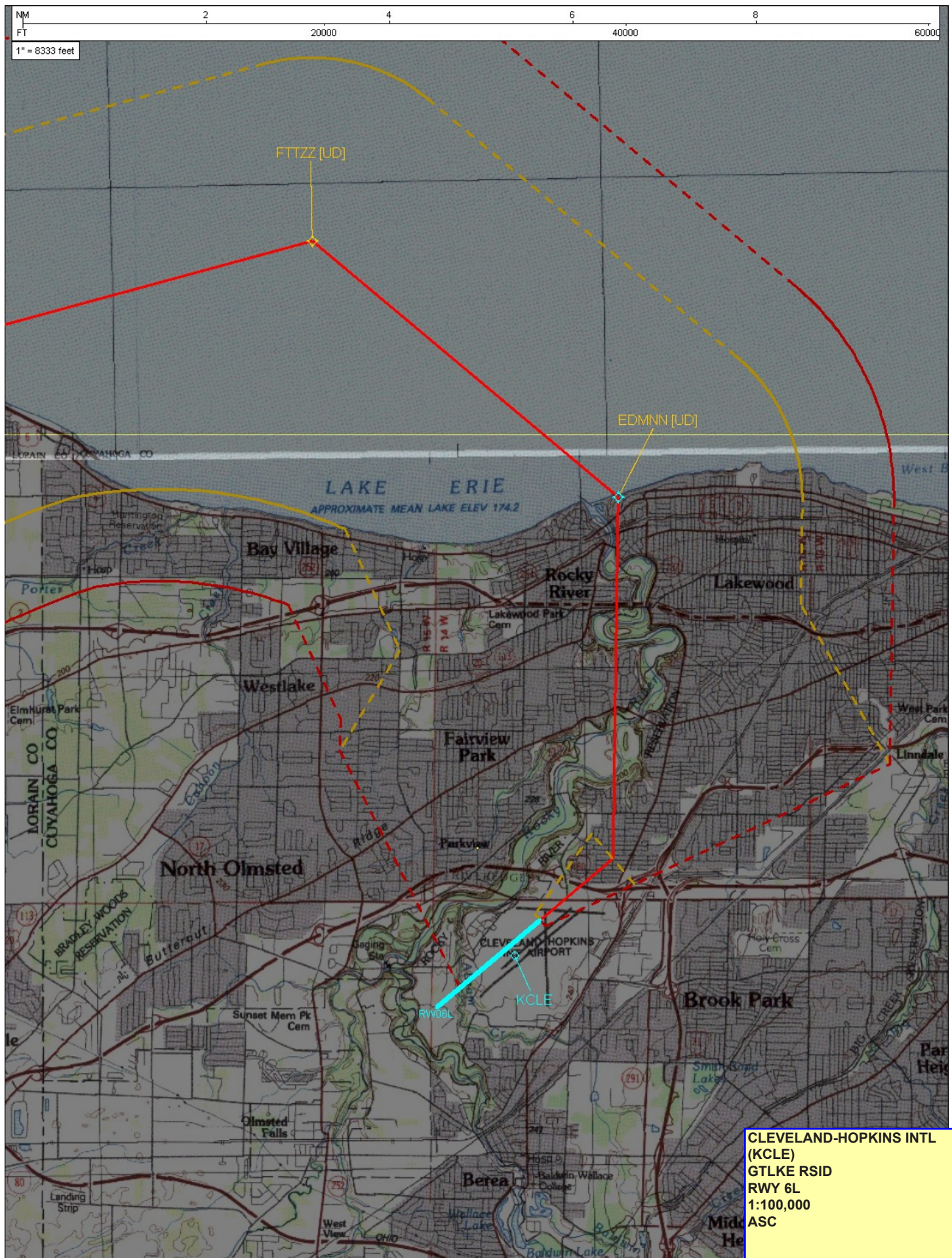
ALPHE TRANSITION (GTLKE1.ALPHE)

BAGEL TRANSITION (GTLKE1.BAGEL)

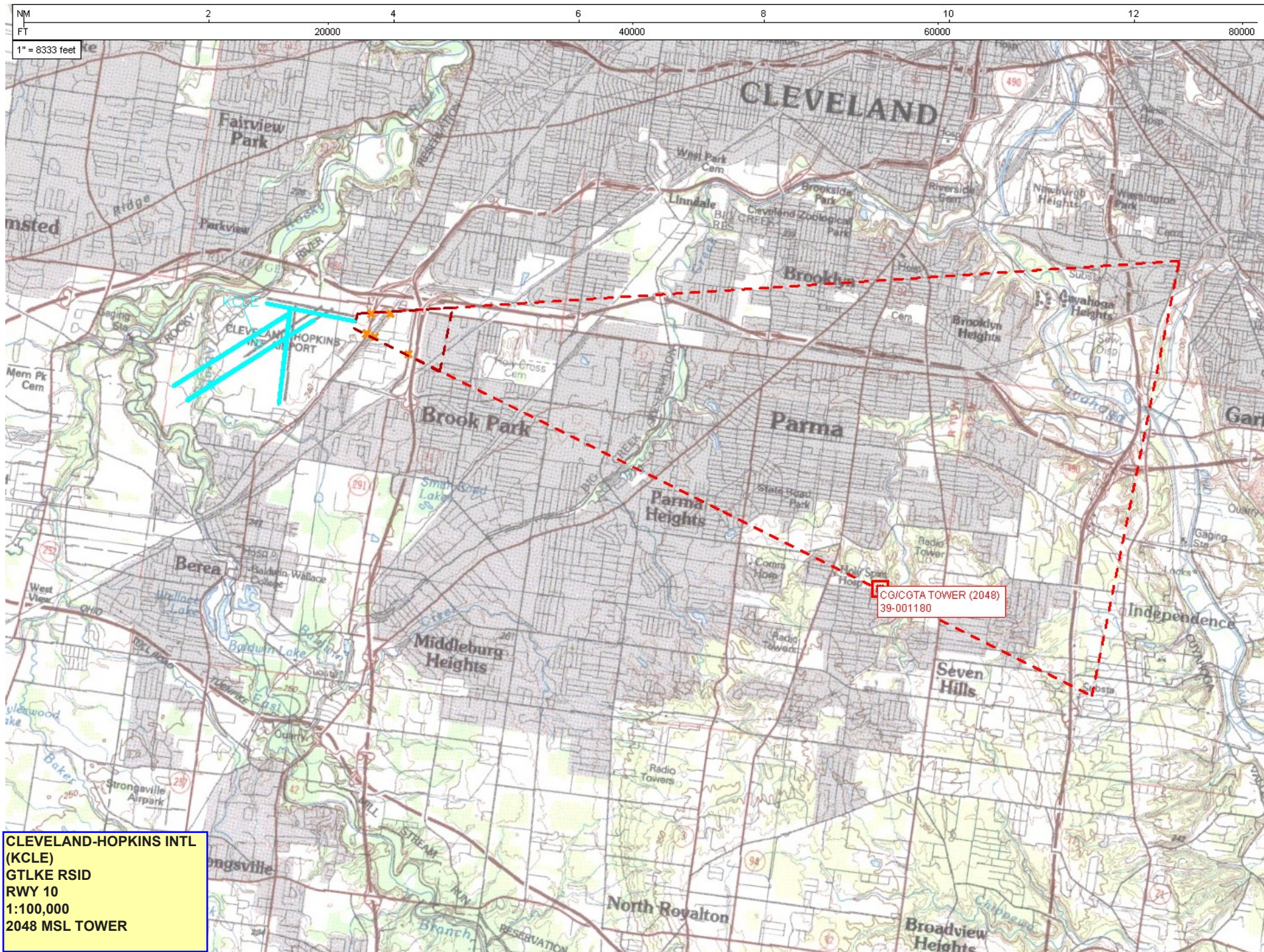
DAIFE TRANSITION (GTLKE1.DAIFE)

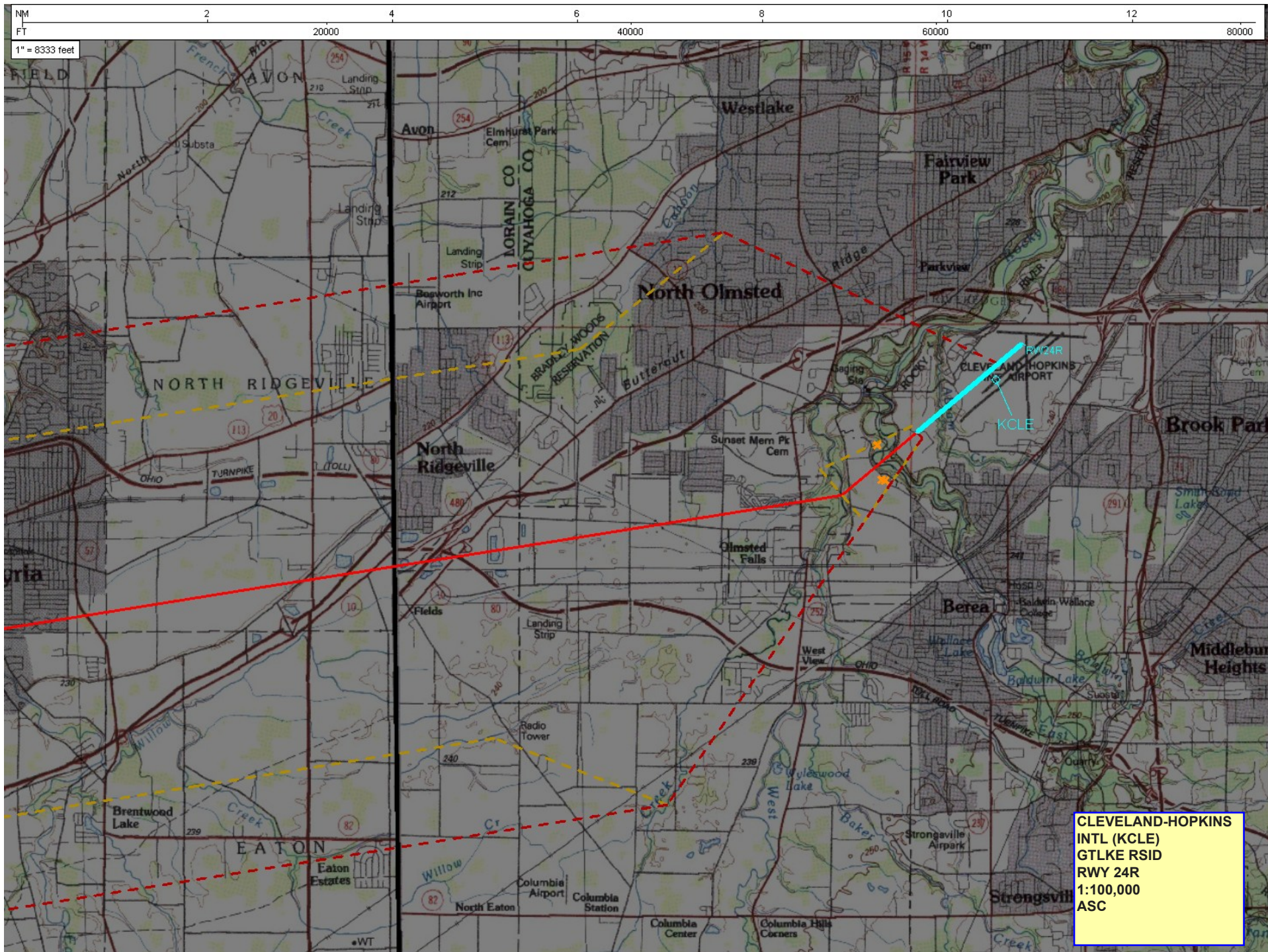
YABRO TRANSITION (GTLKE1.YABRO)

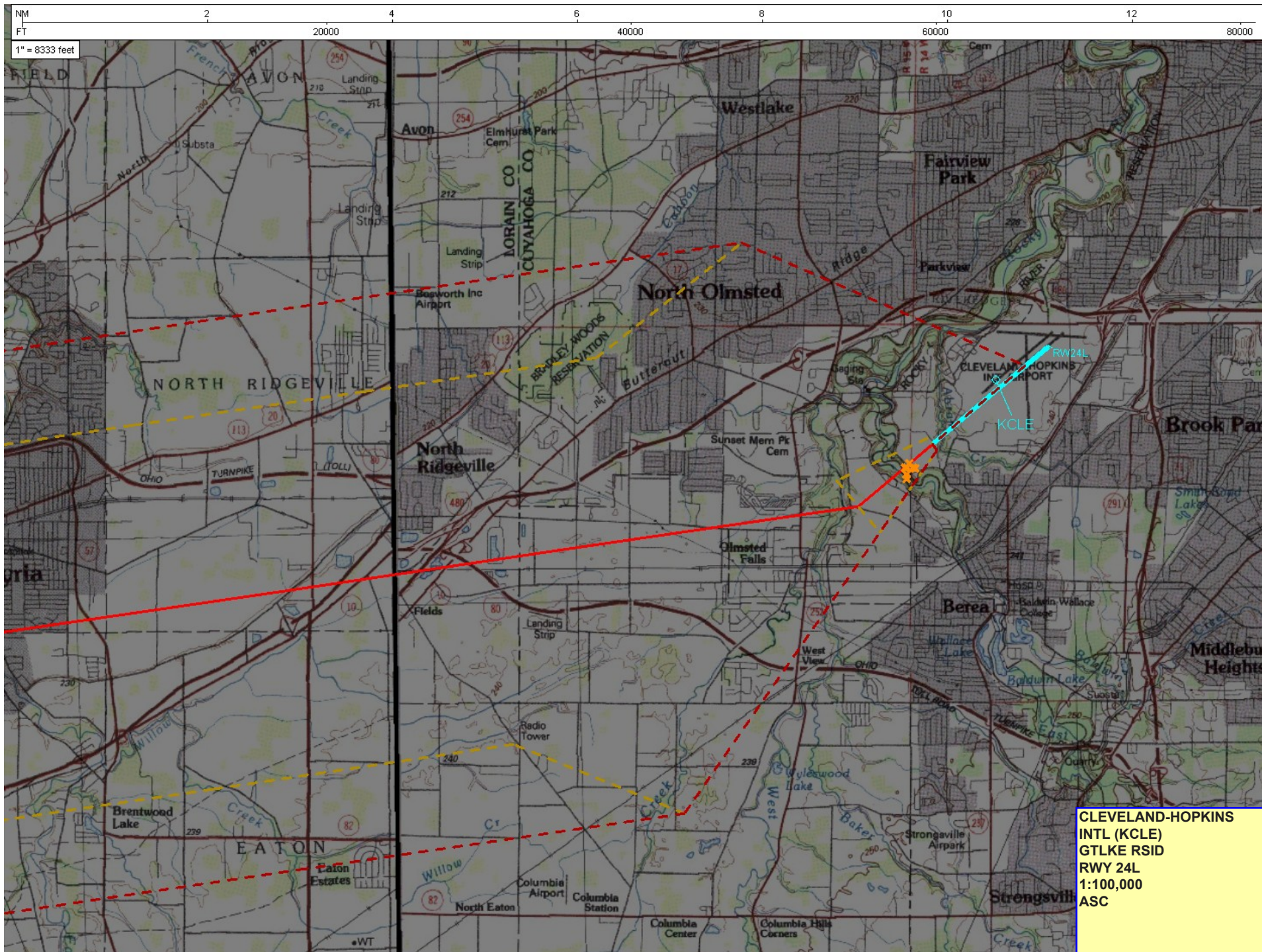
PROTOTYPE-NOT FOR NAVIGATION

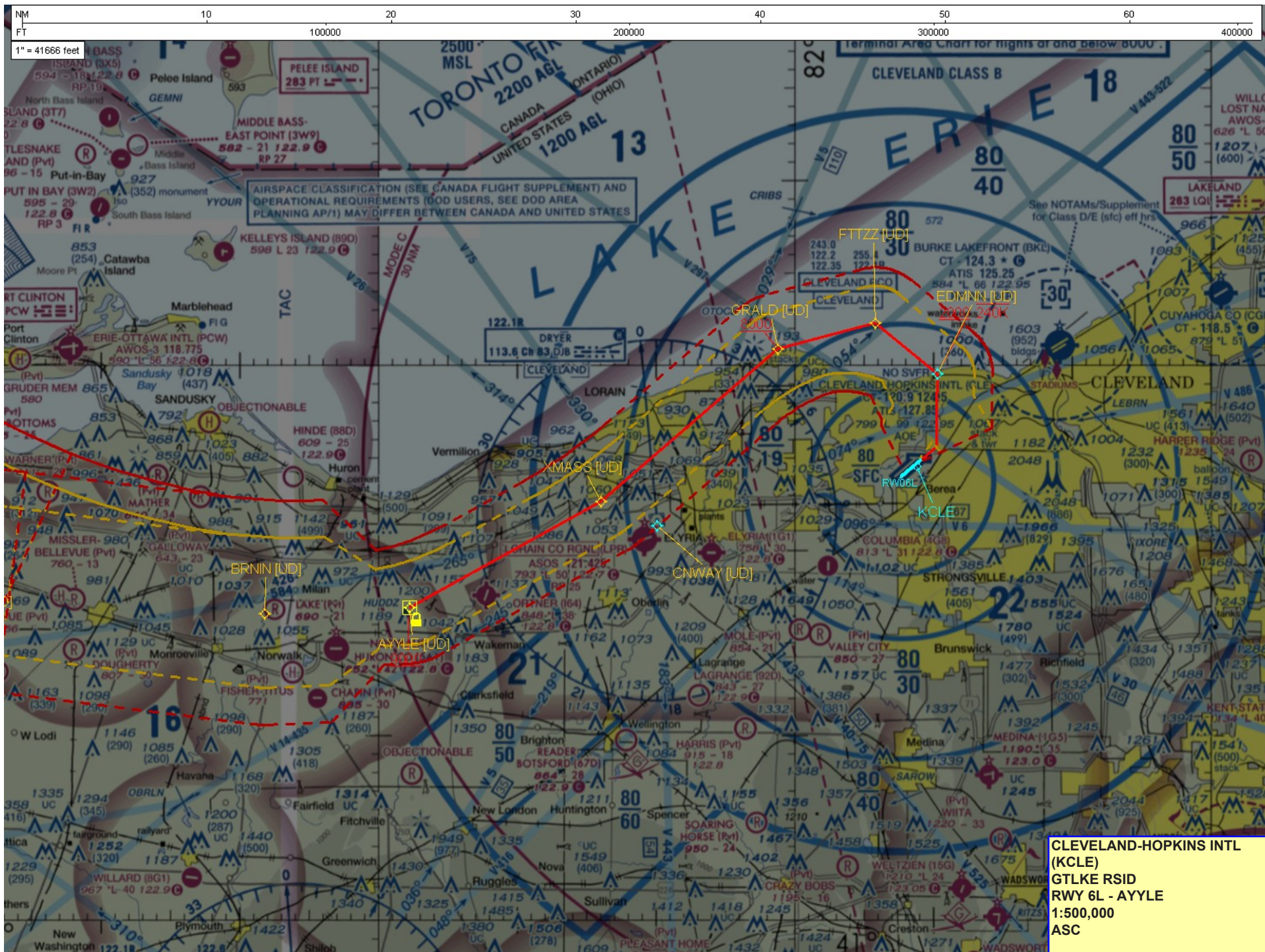






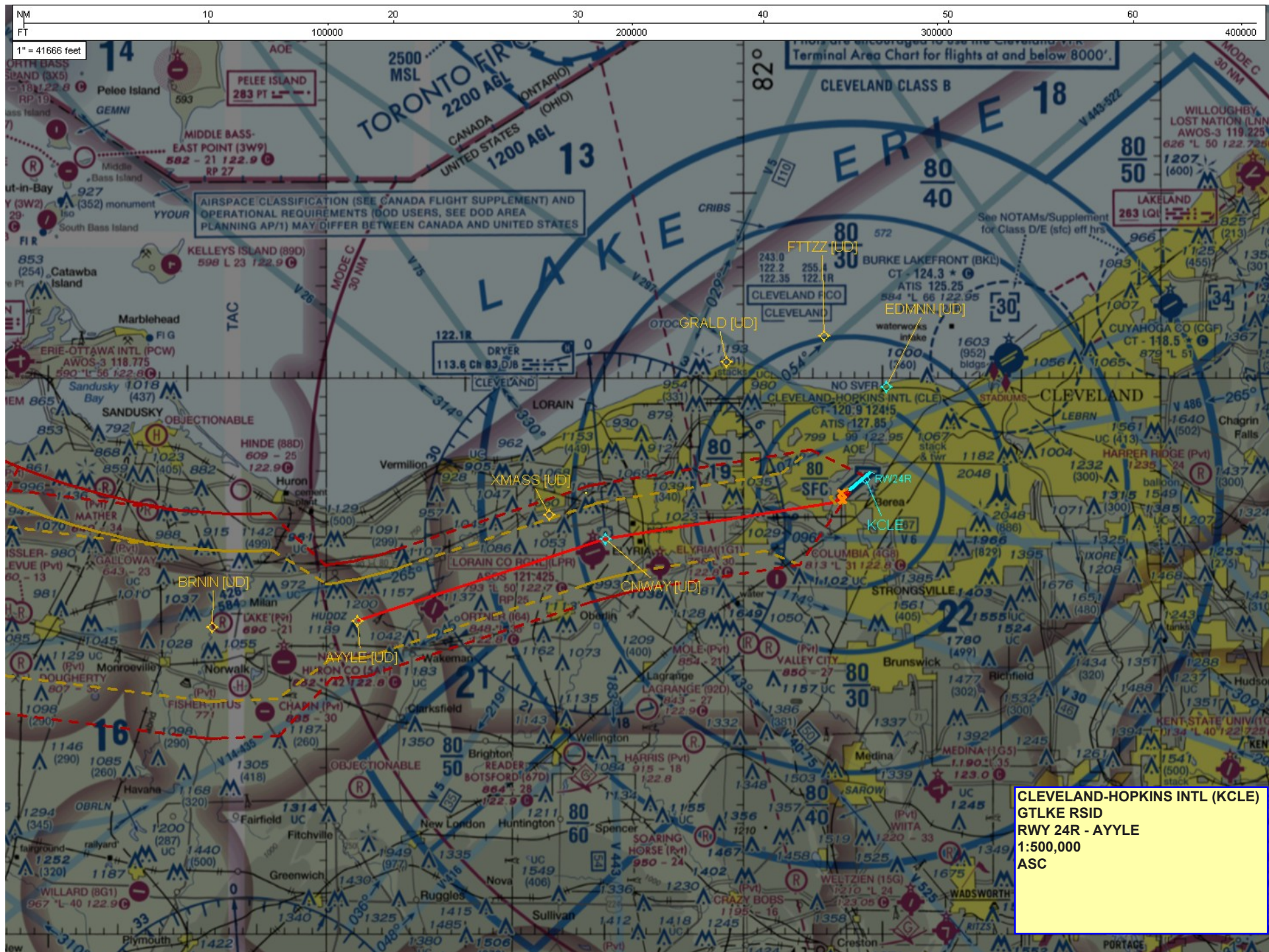


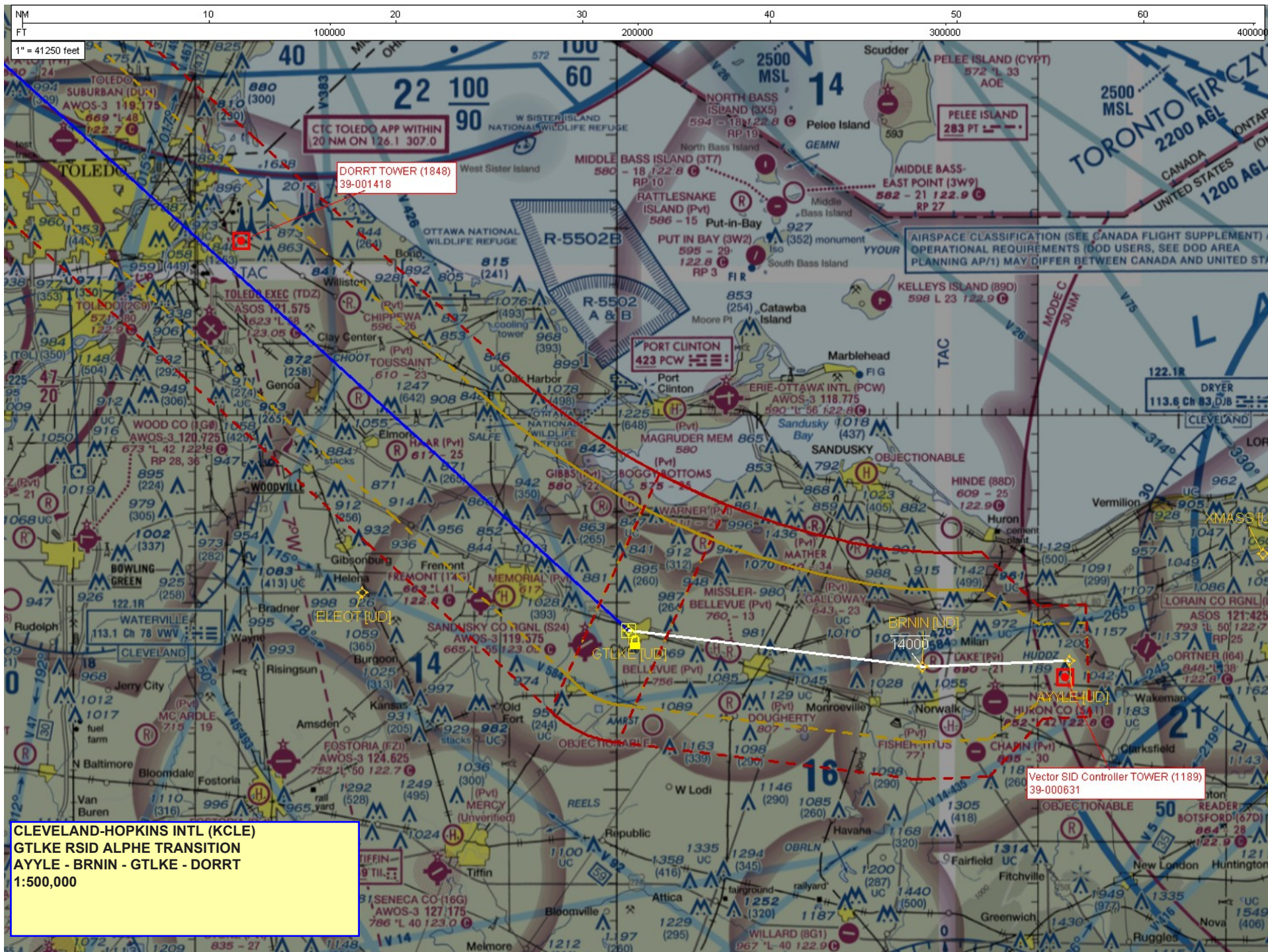












1" = 41666 feet



CLEVELAND-HOPKINS INTL
(KCLE)
GTLKE RSID ALPHE TRANSITION
DORR - ALPHE
1:500,000

