

FEDERAL AVIATION ADMINISTRATION  
FLIGHT STANDARDS SERVICE  
STANDARD TERMINAL ARRIVAL (STAR)

Bearings, headings, courses, tracks and radials are magnetic. Elevations and altitudes are in feet, MSL. Altitudes are minimum altitudes unless otherwise indicated.  
Distances are in nautical miles (NM). Graphic depictions attached.

Arrival Name	Number	STAR Computer Code	Superseded Number	Dated	Effective Date
ROLLN (RNAV)	ONE	ROLLN.ROLLN1	NONE		

TRANSITION ROUTES:

Transition Name	Transition Computer Codes	From FIX/NAVAID	To FIX/NAVAID	Mag Course	Distance	MEA	MOCA	MAA	Crossing Altitudes / Fixes
JANYS	JANYS.ROLLN1	JANYS	JANYS						
			JPLIN	018.49	35.21	10000	2600		
			GEDDY	018.08	11.04	10000	2700		BETWEEN 17000 AND FL230
			ROLLN	018.09	21.01	10000	2700		BETWEEN 11000 AND 17000

ARRIVAL ROUTE DESCRIPTION:

KCLE: FROM ROLLN ON TRACK 009.79/10.21 TO CROSS STOHN BETWEEN 9000 AND 14000.

LANDING KCLE RWY 6L/R: FROM STOHN ON TRACK 312.10/3.16 TO CROSS LVISS BETWEEN 8000 AND 9000, THEN ON TRACK 312.06/6.29 TO CROSS NIXXS AT 6000, THEN ON TRACK 311.58/4.00 TO CROSS GROHL AT 6000 AND AT 210 KIAS, THEN ON HEADING 236.00 OR AS ASSIGNED BY ATC. EXPECT RADAR VECTORS TO FINAL APPROACH COURSE.

LANDING KCLE RWY 24L/R: FROM STOHN ON TRACK 009.74/9.01 TO MEEAT, THEN ON TRACK 009.77/10.23 TO CROSS CLAPT AT 7000 AND AT 210 KIAS, THEN ON HEADING 056.00 OR AS ASSIGNED BY ATC. EXPECT RADAR VECTORS TO FINAL APPROACH COURSE.

LANDING KCLE RWY 28: FROM STOHN ON TRACK 018.18/15.86 TO CROSS SWEEET AT 7000 AND AT 210 KIAS, THEN ON HEADING 101.00 OR AS ASSIGNED BY ATC. EXPECT RADAR VECTORS TO FINAL APPROACH COURSE.

LANDING KBKL/KLNN/KCGF/KLPR: FROM ROLLN ON TRACK 009.79/10.21 TO CROSS STOHN BETWEEN 9000 AND 14000, THEN ON TRACK 034.26/6.00 TO CROSS HENDX AT 9000, THEN ON TRACK 034.26. EXPECT RADAR VECTORS TO FINAL APPROACH COURSE.

PROCEDURAL DATA NOTES:

NOTE: RADAR REQUIRED

NOTE: RNAV 1

NOTE: DME/DME/IRU OR GPS REQUIRED

NOTE: JET AIRCRAFT EXPECT "DESCEND VIA" CLEARANCE FROM CLEVELAND CENTER

NOTE: JET AIRCRAFT DESCEND VIA MACH NUMBER UNTIL INTERCEPTING 280 KIAS. MAINTAIN 280 KIAS UNTIL SLOWED BY THE STAR.

NOTE: CLE LANDING SOUTH: USE RWY 24R TRANSITION, EXPECT RUNWAY ASSIGNMENT PRIOR TO ROLLN.

NOTE: CLE LANDING NORTH: USE RWY 6L TRANSITION, EXPECT RUNWAY ASSIGNMENT PRIOR TO ROLLN.

FIXES AND/OR HOLDING PATTERNS:

CHART HOLDING AT ROLLN: HOLD S, RT, 018.09 INBOUND, 10 NM LEGS.

COMMUNICATIONS:

CLEVELAND APP CON, CLE ATIS, BKL ATIS

AIRPORTS SERVED:

CLEVELAND-HOPKINS INTL, CLEVELAND, OH (KCLE)

BURKE LAKEFRONT, CLEVELAND, OH (KBKL)

CUYAHOGA COUNTY, CLEVELAND, OH (KCGF)

LORAIN COUNTY RGNL, LORAIN/ELYRIA, OH (KLPR)

WILLOUGHBY LOST NATION MUNI, WILLOUGHBY, OH (KLNN)

FEDERAL AVIATION ADMINISTRATION  
FLIGHT STANDARDS SERVICE  
STANDARD TERMINAL ARRIVAL (STAR)

Bearings, headings, courses, tracks and radials are magnetic. Elevations and altitudes are in feet, MSL. Altitudes are minimum altitudes unless otherwise indicated.  
Distances are in nautical miles (NM). Graphic depictions attached.

Arrival Name	Number	STAR Computer Code	Superseded Number	Dated	Effective Date
ROLLN (RNAV)	ONE	ROLLN.ROLLN1	NONE		

LOST COMMUNICATIONS PROCEDURE:

REMARKS:

ADDITIONAL FLIGHT DATA:

DME/DME ASSESSMENT: SAT (RNP 2.0)  
REFERENCE MAGNETIC VARIATION = KCLE 08W/2020  
CHART AT HENDX TERMINUS: LDG KBKL, KCGF, KLNN, KLPR  
CHART AT GROHL TERMINUS: KCLE LDG RWY 6L/R  
CHART AT CLAPT TERMINUS: KCLE LDG RWY 24L/R  
CHART AT SWEEE TERMINUS: KCLE LDG RWY 28  
DO NOT CHART MOCAs.

FLIGHT INSPECTED BY:

Name	Organization	Date	Signature
------	--------------	------	-----------

DEVELOPED BY:

MIKE FERRELL	CLEVELAND ARTCC METROPLEX LEAD	30 AUG 2017	Signature
--------------	--------------------------------	-------------	-----------

APPROVED BY:

MARLON J. ROBINSON, MANAGER	AJV-5440		
Name	Organization	Date	Signature

CHANGES:

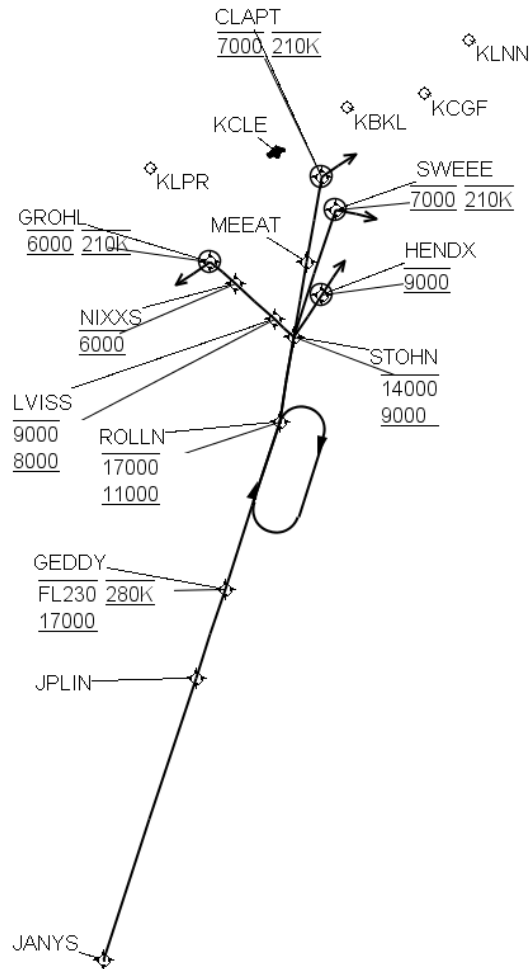
REASONS:



FEDERAL AVIATION ADMINISTRATION  
FLIGHT STANDARDS SERVICE  
STANDARD TERMINAL ARRIVAL (STAR)

Bearings, headings, courses, tracks and radials are magnetic. Elevations and altitudes are in feet, MSL. Altitudes are minimum altitudes unless otherwise indicated.  
Distances are in nautical miles (NM). Graphic depictions attached.

Arrival Name	Number	STAR Computer Code	Superseded Number	Dated	Effective Date
ROLLN (RNAV)	ONE	ROLLN.ROLLN1	NONE		
Graphic Depiction 1					



FEDERAL AVIATION ADMINISTRATION  
FLIGHT STANDARDS SERVICE  
STAR (DATA RECORD)

Arrival Name ROLLN (RNAV)		Number ONE		STAR Computer Code ROLLN.ROLLN1		Superseded Number NONE		Dated	Effective Date
FIX/NAVAID	LAT/LONG	C	FO/FB	LEG TYPE	TC	DIST (NM)	ALTITUDE	SPEED	REMARKS
En Route Transition									
JANYS	394639.94N / 0820031.08W	Y		IF					JANYS.ROLLN1
JPLIN	402118.57N / 0815207.80W	Y	FB	TF	010.49	35.21			
GEDDY	403211.21N / 0814935.66W	Y	FB	TF	010.08	11.04	17000BFL230	AT 280K	
ROLLN	405253.15N / 0814444.34W	Y	FB	TF	010.09	21.01	11000B17000		
Common Route									
ROLLN	405253.15N / 0814444.34W	Y		IF			11000B17000		ROLLN.ROLLN1
STOHN	410305.79N / 0814419.06W	Y	FB	TF	001.79	10.21	9000B14000		
Common Route									
ROLLN	405253.15N / 0814444.34W	Y		IF			11000B17000		ROLLN.ROLLN1
STOHN	410305.79N / 0814419.06W	Y	FB	TF	001.79	10.21	9000B14000		
HENDX	410828.77N / 0814048.24W	Y	FO	TF	026.26	06.00	AT 9000		
KBKL,KCGF,KLNN, KLPR				FM	026.26				RECOMMENDED NAVAID: EWC VORTAC
Runway Transition									
STOHN	410305.79N / 0814419.06W	Y		IF			9000B14000		
LVISS	410452.26N / 0814747.00W	Y	FB	TF	304.10	03.16	8000B9000		
NIXXS	410823.56N / 0815440.80W	Y	FB	TF	304.06	06.29	AT 6000		
GROHL	411036.32N / 0815905.68W	Y	FO	TF	303.58	04.00	AT 6000	AT 210K	
KCLE:RWY 6L,RWY 6R				VM	228.00				
Runway Transition									
STOHN	410305.79N / 0814419.06W	Y		IF			9000B14000		
MEEAT	411206.69N / 0814357.36W	Y	FB	TF	001.74	09.01			



FEDERAL AVIATION ADMINISTRATION  
FLIGHT STANDARDS SERVICE  
STAR (DATA RECORD)

Arrival Name ROLLN (RNAV)	Number ONE	STAR Computer Code ROLLN.ROLLN1		Superseded Number NONE		Dated	Effective Date		
FIX/NAVAID	LAT/LONG	C	FO/FB	LEG TYPE	TC	DIST (NM)	ALTITUDE	SPEED	REMARKS
CLAPT	412220.63N / 0814332.22W	Y	FO	TF	001.77	10.23	AT 7000	AT 210K	
KCLE:RWY 24L,RWY 24R				VM	048.00				
Runway Transition									
STOHN	410305.79N / 0814419.06W	Y		IF			9000B14000		
SWEEE	411842.74N / 0814035.88W	Y	FO	TF	010.18	15.86	AT 7000	AT 210K	
KCLE:RWY 28				VM	093.00				