

<b>Flight Procedure Tracking Form</b>		<b>Action:</b> FLIGHT CHECK	<b>Task Type:</b> STAR	<b>Date Open:</b> 10/14/2015	<b>Task #:</b> 2015101428270601001	<b>Request #:</b> 20151014282706
<b>Procedure:</b> STAR BRWNZ (RNAV) ONE CLEVELAND OH CLE			<b>Airport ID:</b> KCLE	<b>Airport:</b> CLEVELAND-HOPKINS INTL		<b>Reimbursable #:</b> NO
<b>City:</b> CLEVELAND	<b>ST:</b> OH	<b>GPS #:</b>	<b>Estimated Chart Date:</b> 05/24/2018		<b>FICO #:</b>	
<b>Fac ID:</b> N/A		<b>Fac. Type:</b>			<b>Specialist:</b> MICHAEL CURRAN	
<b>Procedure Review</b>						
	<b>Rec'd</b>	<b>Rel'd</b>	<b>Full Name</b>	<b>Comments</b>		
<b>Lead:</b>	11/08/2017					
<b>QA:</b>				01/12/2018		
<b>Liaison:</b>						
<b>Procedure Comments:</b>			ENROUTE	<b>Remark Type:</b> INFORMATION		
<p>ACTIVE DATA USED FOR KCLE AIRPORT.</p> <p>CONTACT: DON LANIER, LEAD, 405-954-8242.</p>						

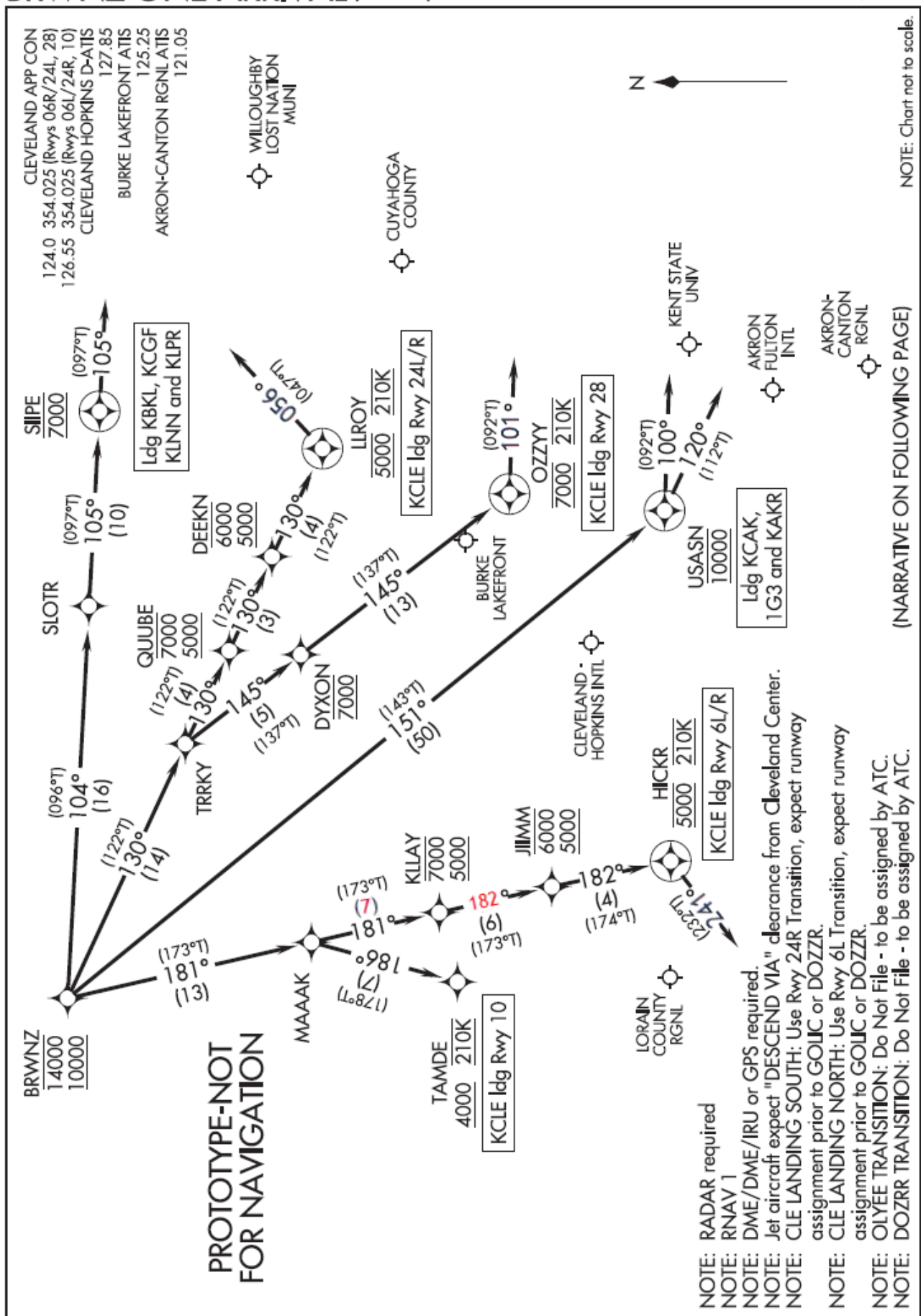
QUALITY  
14  
CHECKED

QUALITY  
28  
CHECKED





## Arrival Routes



NOTE: Chart not to scale.

(NARRATIVE ON FOLLOWING PAGE)

NOTE: RADAR required

NOTE: RNAV 1

NOTE: DME/DME/IRU or GPS required.

NOTE: Jet aircraft expect "DESCEND VIA" clearance from Cleveland Center.

NOTE: CLE LANDING SOUTH: Use Rwy 24R Transition, expect runway

assignment prior to GOUC or DOZZR.

NOTE: CLE LANDING NORTH: Use Rwy 6L Transition, expect runway

assignment prior to GOLLIC or DOZZR.

NOTE: OLYEE TRANSITION: Do Not File - to be assigned by ALC.  
NOTE: DOZBB TRANSITION: Do Not File - to be assigned by ALC.

NOTE: DOZRR TRANSITION: Do Not File - to be assigned by AIC.

CLEVELAND, OHIO

**BRWNZ ONE ARRIVAL (RNAV)**

CLEVELAND, OHIO

**ARRIVAL ROUTE DESCRIPTION**

LANDING KCLE RWY 06R/L: From BRWNZ on track 181° to MAAAK, then on track 181° to cross KLLAY between 5000 and 7000, then on track 182° to cross JIIMM between 5000 and 6000, then on track 182° to cross HICKR at 5000 and at 210K, then on heading 241° or as assigned by ATC. Expect RADAR vectors to final approach course.

LANDING KCLE RWY 10: From BRWNZ on track 181° to MAAAK, then on track 186° to cross TAMDE at or above 4000 and at 210K. Expect RNAV (GPS) Rwy 10 approach.

LANDING KCLE RWY 24R/L: From BRWNZ on track 130° to TRRKY, then on track 130° to cross QUUBE between 5000 and 7000, then on track 130° to cross DEEKN between 5000 and 6000, then on track 130° to cross LLROY at 5000 and at 210K, then on heading 056° or as assigned by ATC. Expect RADAR vectors to final approach course.

LANDING KCLE RWY 28: From BRWNZ on track 130° to TRRKY, then on track 145° to cross DYXON at 7000, then on track 145° to cross OZZYY at 7000 and at 210K, then on heading 101° or as assigned by ATC. Expect RADAR vectors to final approach course.

LANDING KAKR/1G3: From BRWNZ on track 151° to cross USASN at 10000, then on track 100°. Expect RADAR vectors to final approach course.

LANDING KBKL/KLNN/KCGF/KLPR: From BRWNZ on track 104° to SLOTR, then on track 105° to cross SIIPE at 7000, then on track 105°. Expect RADAR vectors to final approach course.

LANDING KCAK: From BRWNZ on track 151° to cross USASN at 10000, then on track 120°. Expect RADAR vectors to final approach course.

**PROTOTYPE-NOT FOR NAVIGATION**

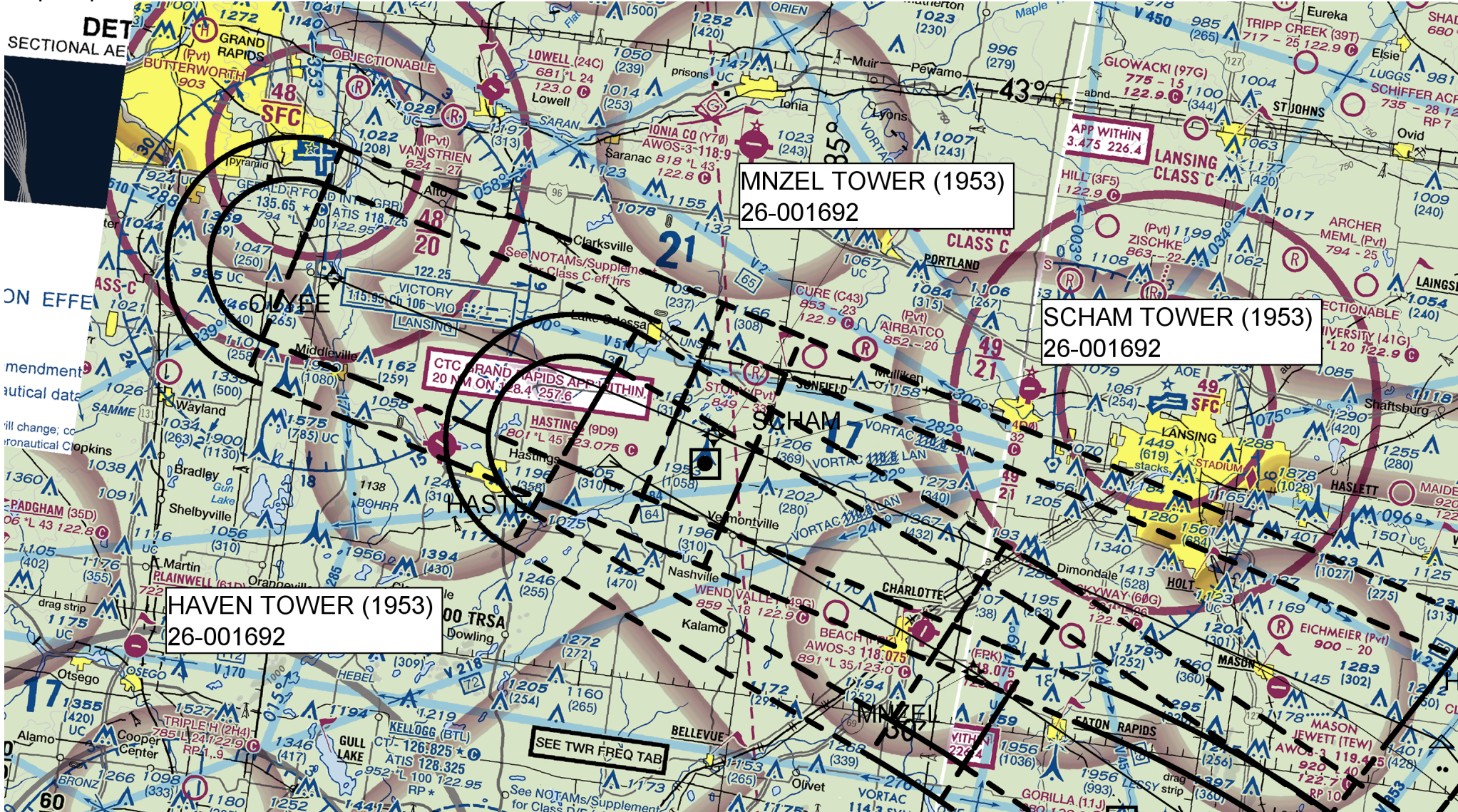


FEDERAL AVIATION ADMINISTRATION  
FLIGHT STANDARDS SERVICE  
STANDARD TERMINAL ARRIVAL (STAR)

Bearings, headings, courses, tracks and radials are magnetic. Elevations and altitudes are in feet, MSL. Altitudes are minimum altitudes unless otherwise indicated.  
Distances are in nautical miles (NM). Graphic depictions attached.

Arrival Name	Number	STAR Computer Code	Superseded Number	Dated	Effective Date
BRWNZ (RNAV)	ONE	BRWNZ.BRWNZ1	NONE		

Graphic Depiction 4



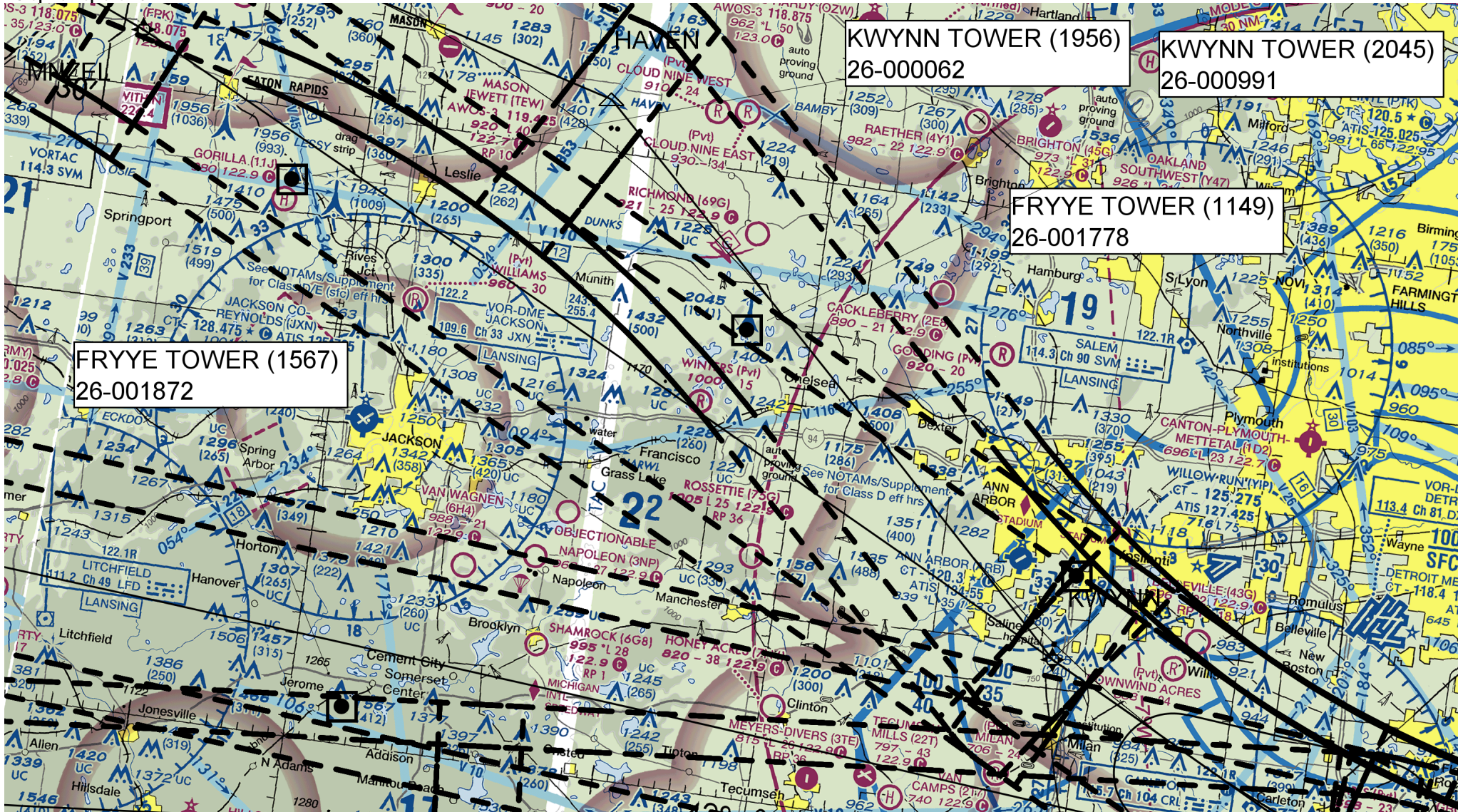


FEDERAL AVIATION ADMINISTRATION  
FLIGHT STANDARDS SERVICE  
STANDARD TERMINAL ARRIVAL (STAR)

Bearings, headings, courses, tracks and radials are magnetic. Elevations and altitudes are in feet, MSL. Altitudes are minimum altitudes unless otherwise indicated. Distances are in nautical miles (NM). Graphic depictions attached.

Arrival Name	Number	STAR Computer Code	Superseded Number	Dated	Effective Date
BRWNZ (RNAV)	ONE	BRWNZ.BRWNZ1	NONE		

Graphic Depiction 5



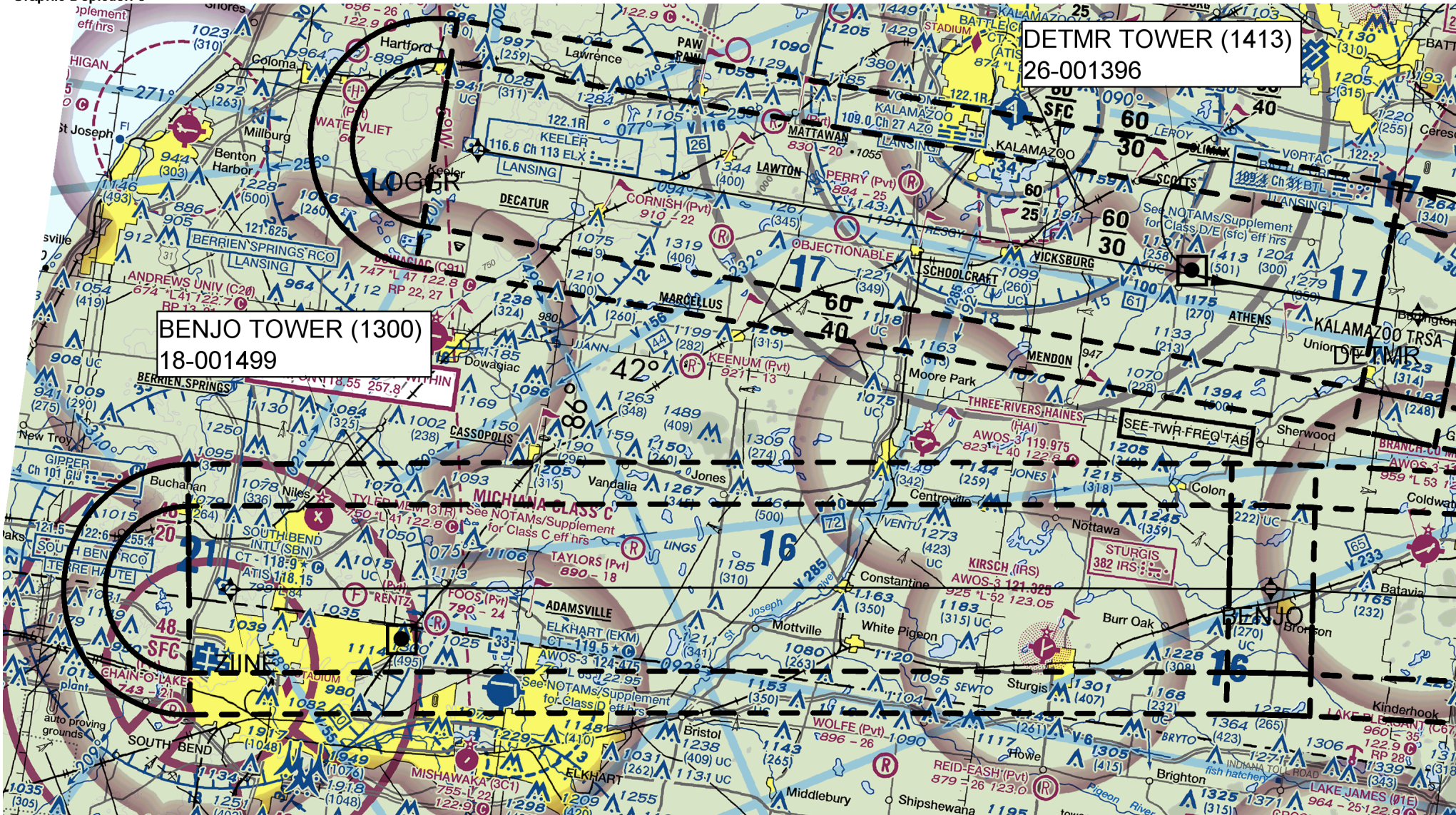


FEDERAL AVIATION ADMINISTRATION  
FLIGHT STANDARDS SERVICE  
STANDARD TERMINAL ARRIVAL (STAR)

Bearings, headings, courses, tracks and radials are magnetic. Elevations and altitudes are in feet, MSL. Altitudes are minimum altitudes unless otherwise indicated. Distances are in nautical miles (NM). Graphic depictions attached.

Arrival Name	Number	STAR Computer Code	Superseded Number	Dated	Effective Date
BRWNZ (RNAV)	ONE	BRWNZ.BRWNZ1	NONE		

Graphic Depiction 6



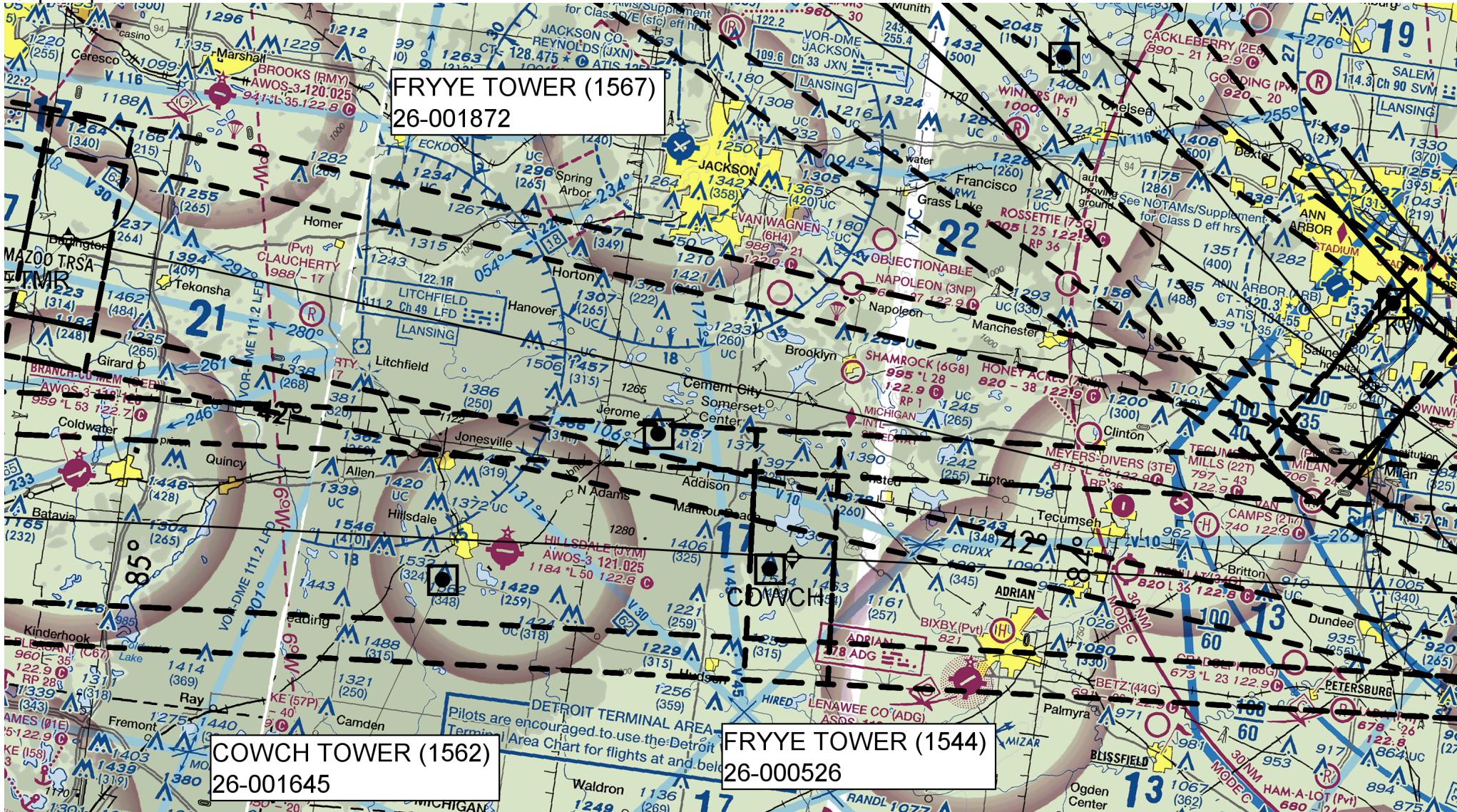


FEDERAL AVIATION ADMINISTRATION  
FLIGHT STANDARDS SERVICE  
STANDARD TERMINAL ARRIVAL (STAR)

Bearings, headings, courses, tracks and radials are magnetic. Elevations and altitudes are in feet, MSL. Altitudes are minimum altitudes unless otherwise indicated. Distances are in nautical miles (NM). Graphic depictions attached.

Arrival Name	Number	STAR Computer Code	Superseded Number	Dated	Effective Date
BRWNZ (RNAV)	ONE	BRWNZ.BRWNZ1	NONE		

Graphic Depiction 7



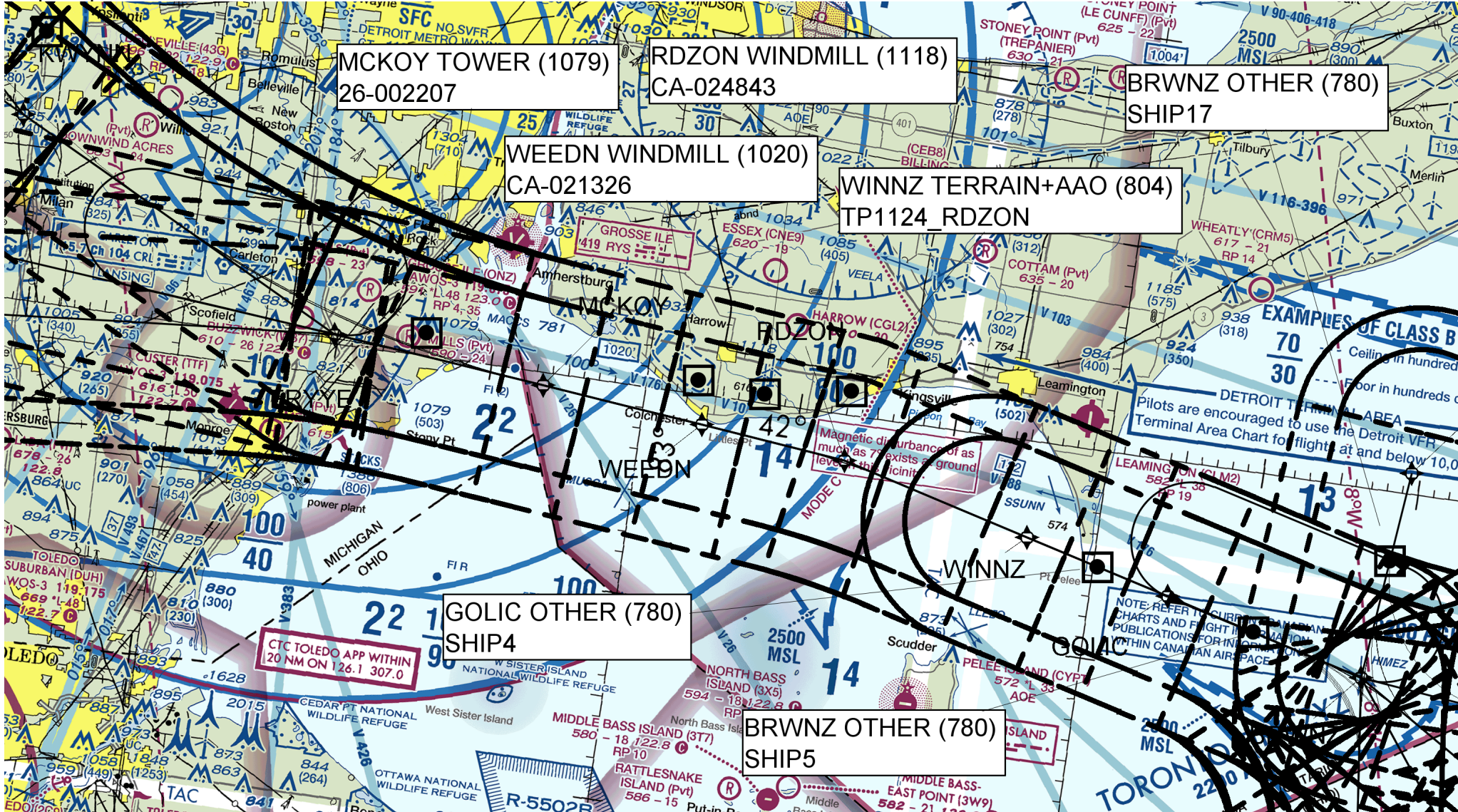


FEDERAL AVIATION ADMINISTRATION  
FLIGHT STANDARDS SERVICE  
STANDARD TERMINAL ARRIVAL (STAR)

Bearings, headings, courses, tracks and radials are magnetic. Elevations and altitudes are in feet, MSL. Altitudes are minimum altitudes unless otherwise indicated. Distances are in nautical miles (NM). Graphic depictions attached.

Arrival Name	Number	STAR Computer Code	Superseded Number	Dated	Effective Date
BRWNZ (RNAV)	ONE	BRWNZ.BRWNZ1	NONE		

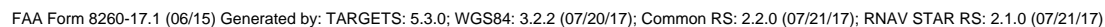
Graphic Depiction 8





Bearings, headings, courses, tracks and radials are magnetic. Elevations and altitudes are in feet, MSL. Altitudes are minimum altitudes unless otherwise indicated.  
Distances are in nautical miles (NM). Graphic depictions attached.

### Graphic Depiction 9





FEDERAL AVIATION ADMINISTRATION  
FLIGHT STANDARDS SERVICE  
STANDARD TERMINAL ARRIVAL (STAR)

Bearings, headings, courses, tracks and radials are magnetic. Elevations and altitudes are in feet, MSL. Altitudes are minimum altitudes unless otherwise indicated.  
Distances are in nautical miles (NM). Graphic depictions attached.

Arrival Name	Number	STAR Computer Code	Superseded Number	Dated	Effective Date
BRWNZ (RNAV)	ONE	BRWNZ.BRWNZ1	NONE		

