

Flight Procedure Tracking Form		Action: FLIGHT CHECK	Task Type: GRAPHICAL DP	Date Open: 11/16/2015	Task #: 2015100716111301001	Request #: 20151007161113
Procedure: MONTEREY FOUR MONTEREY CA KMRY			Airport ID: KMRY	Airport: MONTEREY RGNL	Reimbursable #: NO	
City: MONTEREY	ST: CA	GPS #:	Estimated Chart Date: 01/05/2017		FICO #:	
Fac ID: N/A		Fac. Type:			Specialist: DAVID DOWLING	
Procedure Review						
	Rec'd	Rel'd	Full Name	Comments		
Lead:	02/23/2016			<div>QUALITY 3 CHECKED</div> <div>APPROVED</div> <div>By Eugene J Newton at 12:45 pm, Sep 23, 2016</div>		
QA:						
Liaison:						
Procedure Comments: ENROUTE Remark Type: INFORMATION						
ACTIVE DATA USED FOR KMRY AND FACILITIES.						
CONTACT: JOHNNIE BAKER, AJV-5431 SUB-TEAM MANAGER, (405) 954-5148.						

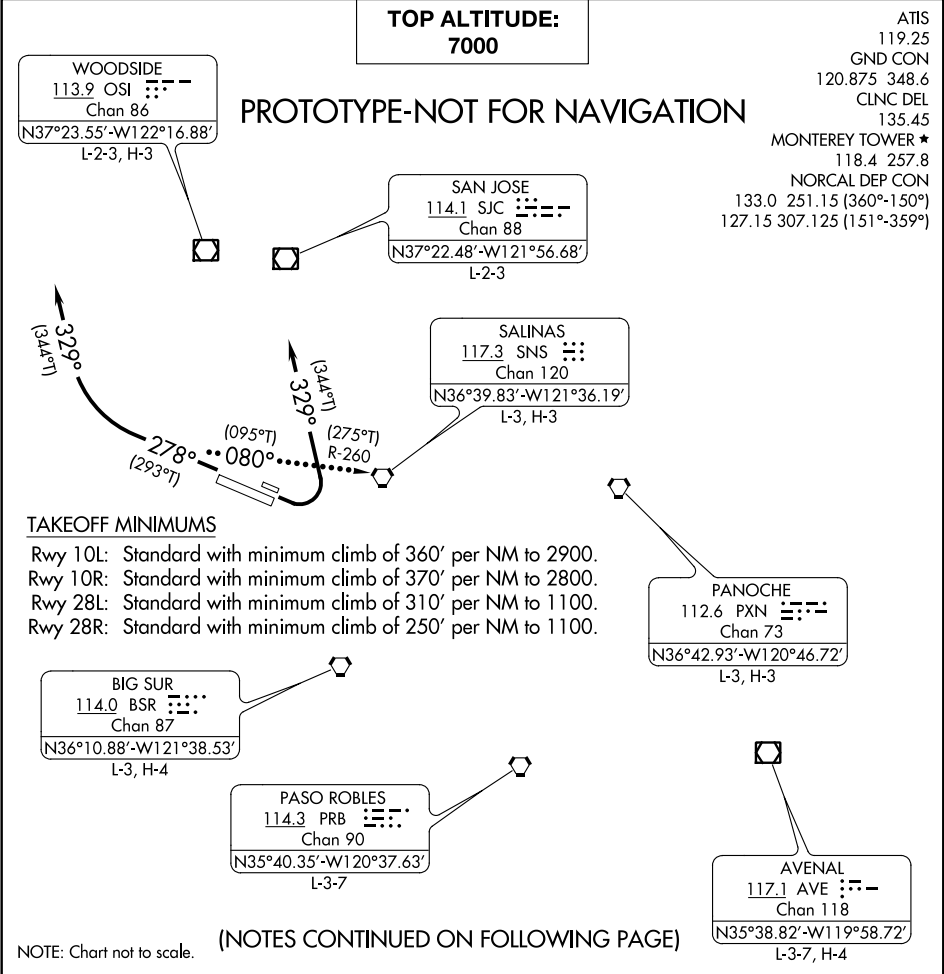
<b>Flight Procedure Tracking Form</b>		<b>Action:</b> AMENDMENT	<b>Task Type:</b> SID	<b>Date Open:</b> 01/13/2016	<b>Task #:</b> 2016011327573201001	<b>Request #:</b> 20160113275732	
<b>Procedure:</b> SID MONTEREY THREE MONTEREY CA KMRY			<b>Airport ID:</b> KMRY	<b>Airport:</b> MONTEREY RGNL	<b>Reimbursable #:</b> NO		
<b>City:</b> MONTEREY	<b>ST:</b> CA	<b>GPS #:</b>	<b>Estimated Chart Date:</b> 07/21/2016		<b>FICO #:</b>		
<b>Fac ID:</b> N/A		<b>Fac. Type:</b>		<b>Specialist:</b> ALLISON CASON			
<b>Procedure Review</b>							
	<b>Rec'd</b>	<b>Rel'd</b>	<b>Full Name</b>	<b>Comments</b>			
<b>Lead:</b>	01/28/2016			QUALITY 23 CHECKED			
<b>QA:</b>							05/25/2016
<b>Liaison:</b>							
<b>Procedure Comments:</b>			ENROUTE	<b>Remark Type:</b> INFORMATION			
<b>TACR AVE</b>  CONTACT: ALLAN WILL 405-954-6103 OR JONNIE BAKER 405-954-5148							

VN8200-6 (05/26/2005)

Data as of: 03/14/2016 06:36:57 AM

6/29/2106

THIS SID NOT PROCESSED FOR PRE-FIG. MONTEREY TWO ADDED BELOW.



DEPARTURE ROUTE DESCRIPTION

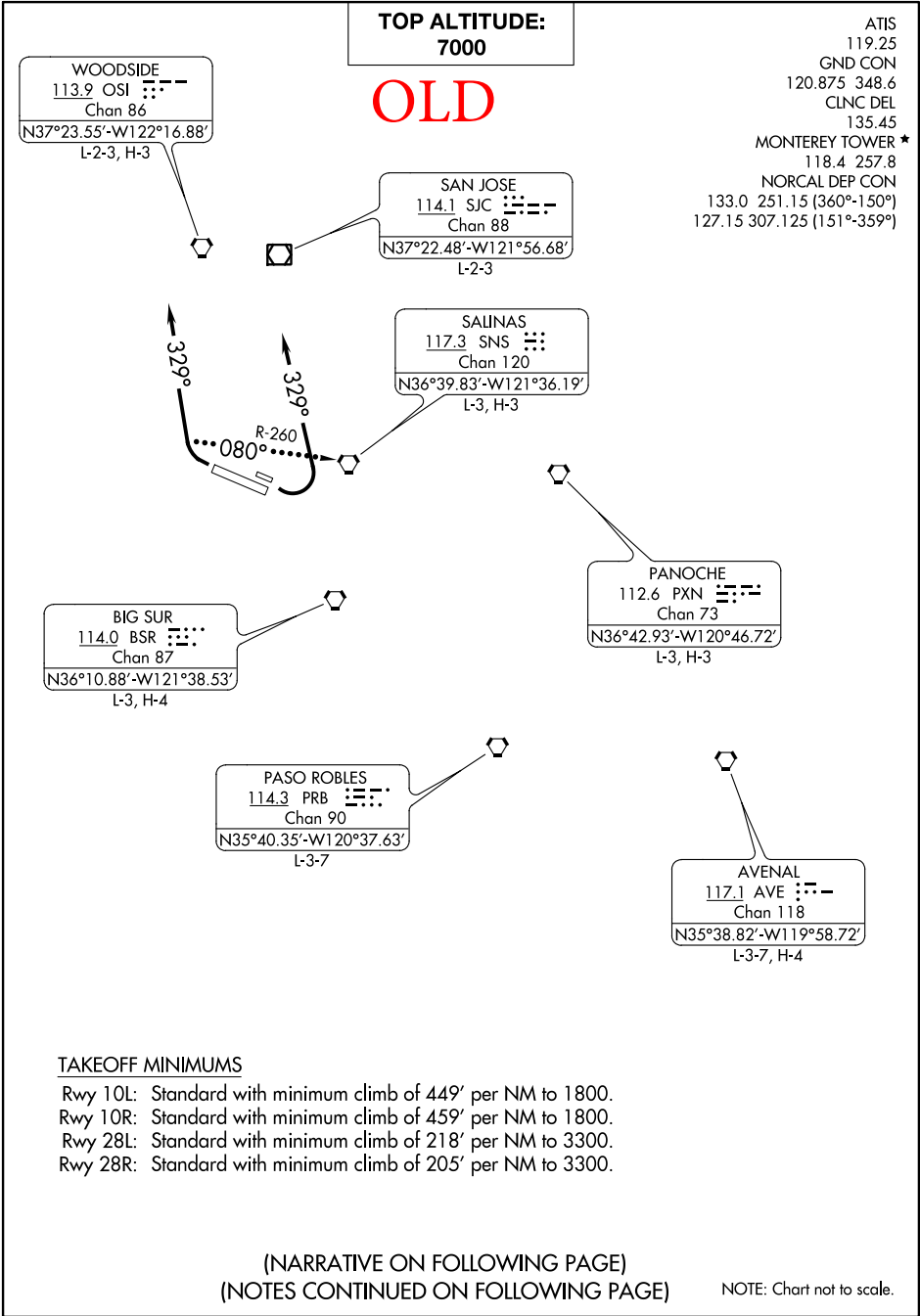
TAKEOFF RUNWAYS 10L/R: Climbing left turn heading 329°. Thence . . . .  
TAKEOFF RUNWAYS 28L/R: Climb heading 278° until leaving 1100 or as directed by Monterey Tower. Then climbing right turn heading 329°. Thence . . . .  
. . . . all aircraft expect vectors to assigned route/fix. Altitude will be assigned by ATC. Maintain 7000 or assigned altitude. Expect clearance to filed altitude five minutes after departure.

LOST COMMUNICATIONS: If no transmissions received for one minute after departure, proceed on SNS R-260 to SNS VORTAC, then on assigned fix/route. Climb to 7000.

TAKEOFF OBSTACLE NOTES

- Rwy 10L: Navaid 556' from DER, 217' right of centerline, 20' AGL/272' MSL.  
Bushes beginning 1.6 NM from DER, 1188' left of centerline up to 9' AGL/729' MSL.  
Trees beginning 1.7 NM from DER, 923' left of centerline up to 102' AGL/764' MSL.  
Trees beginning 1.6 NM from DER, 1993' right of centerline up to 90' AGL/923' MSL.  
Bushes beginning 1.9 NM from DER, 2497' right of centerline up to 9' AGL/781' MSL.  
Tower 2 NM from DER 3305' left of centerline, 27' AGL/767' MSL.
- Rwy 10R: Ground 11' from DER, 358' left of centerline 258' MSL.  
Tree 230' from DER 388' left of centerline 21' AGL/265' MSL.  
Navaid 240' from DER, 282' left of centerline, 20' AGL/272' MSL.  
Bushes beginning 1.5 NM from DER, 2381' left of centerline, up to 9' AGL/648' MSL.  
Trees beginning 1.7 NM from DER, 388' left of centerline up to 76' AGL/629' MSL.  
Bushes beginning 1.8 NM from DER, 2005' right of centerline up to 9' AGL/741' MSL.  
Trees beginning 1.5 NM from DER, 1749' right of centerline up to 90' AGL/843' MSL.
- Rwy 28L: Terrain abeam DER, 198' left of centerline, up to 163' MSL.  
Trees beginning 797' from DER, 678' left of centerline, up to 83' AGL/228' MSL.  
Tree 1008' from DER, 616' left of centerline, 100' AGL/195' MSL.  
Pole 1128' from DER, 716' left of centerline, 54' AGL/195' MSL.  
Tree 1372' from DER, 755' left of centerline, 93' AGL/227' MSL.

PROTOTYPE-NOT FOR NAVIGATION





DEPARTURE ROUTE DESCRIPTION

TAKEOFF RUNWAYS 10L/R: Climbing left turn heading 329°. Thence. . .

TAKEOFF RUNWAYS 28L/R: Climbing right turn heading 329°. Thence. . .

. . . all aircraft expect vectors to assigned route/fix. Altitude will be assigned by ATC. Maintain 7000 or assigned altitude. Expect clearance to filed altitude five minutes after departure.

LOST COMMUNICATIONS: If no transmissions received for one minute after departure, proceed on SNS R-260 to SNS VORTAC, then on assigned fix/route. Climb to 7000.

OLD

TAKEOFF OBSTACLE NOTES

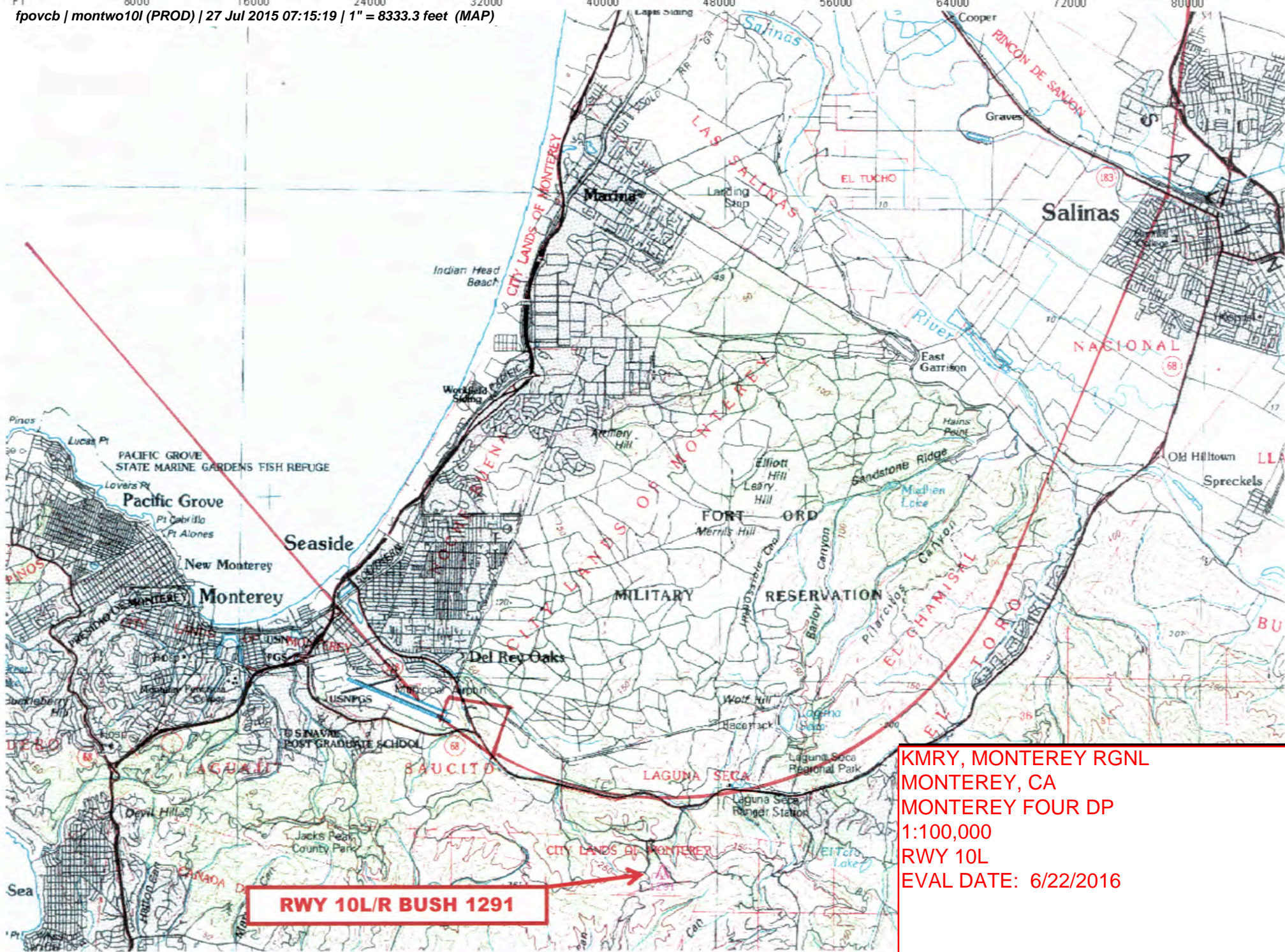
- Rwy 10L: Navaid 556' from DER, 217' right of centerline, 20' AGL/272' MSL. Bushes beginning 1.6 NM from DER, 1188' left of centerline, up to 9' AGL/729' MSL. Trees beginning 1.7 NM from DER, 923' left of centerline, up to 102' AGL/764' MSL. Trees beginning 1.6 NM from DER, 1993' right of centerline, up to 90' AGL/923' MSL. Bushes beginning 1.9 NM from DER, 2497' right of centerline, up to 9' AGL/781' MSL. Tower 2 NM from DER, 3305' left of centerline, 27' AGL/767' MSL.
- Rwy 10R: Ground 11' from DER, 358' left of centerline, 258' MSL. Tree 230' from DER, 388' left of centerline 21' AGL/265' MSL. Navaid 240' from DER, 282' left of centerline, 20' AGL/272' MSL. Bushes beginning 1.5 NM from DER, 2381' left of centerline, up to 9' AGL/648' MSL. Trees beginning 1.7 NM from DER, 388' left of centerline, up to 76' AGL/629' MSL. Bushes beginning 1.8 NM from DER, 2005' right of centerline, up to 9' AGL/741' MSL. Trees beginning 1.5 NM from DER, 1749' right of centerline, up to 90' AGL/843' MSL.
- Rwy 28L: Terrain abeam DER, 198' left of centerline, up to 163' MSL. Trees beginning 797' from DER, 678' left of centerline, up to 83' AGL/228' MSL. Tree 1008' from DER, 616' left of centerline, 100' AGL/195' MSL. Pole 1128' from DER, 716' left of centerline, 54' AGL/195' MSL. Tree 1372' from DER, 755' left of centerline, 93' AGL/227' MSL.

SW-2, 23 JUN 2016 to 21 JUL 2016

SW-2, 23 JUN 2016 to 21 JUL 2016



NM 1 2 3 4 5 6 7 8 9 10 11 12 13 14  
FT 8000 16000 24000 32000 40000 48000 56000 64000 72000 80000  
fpovcb / montwo10l (PROD) / 27 Jul 2015 07:15:19 / 1" = 8333.3 feet (MAP)

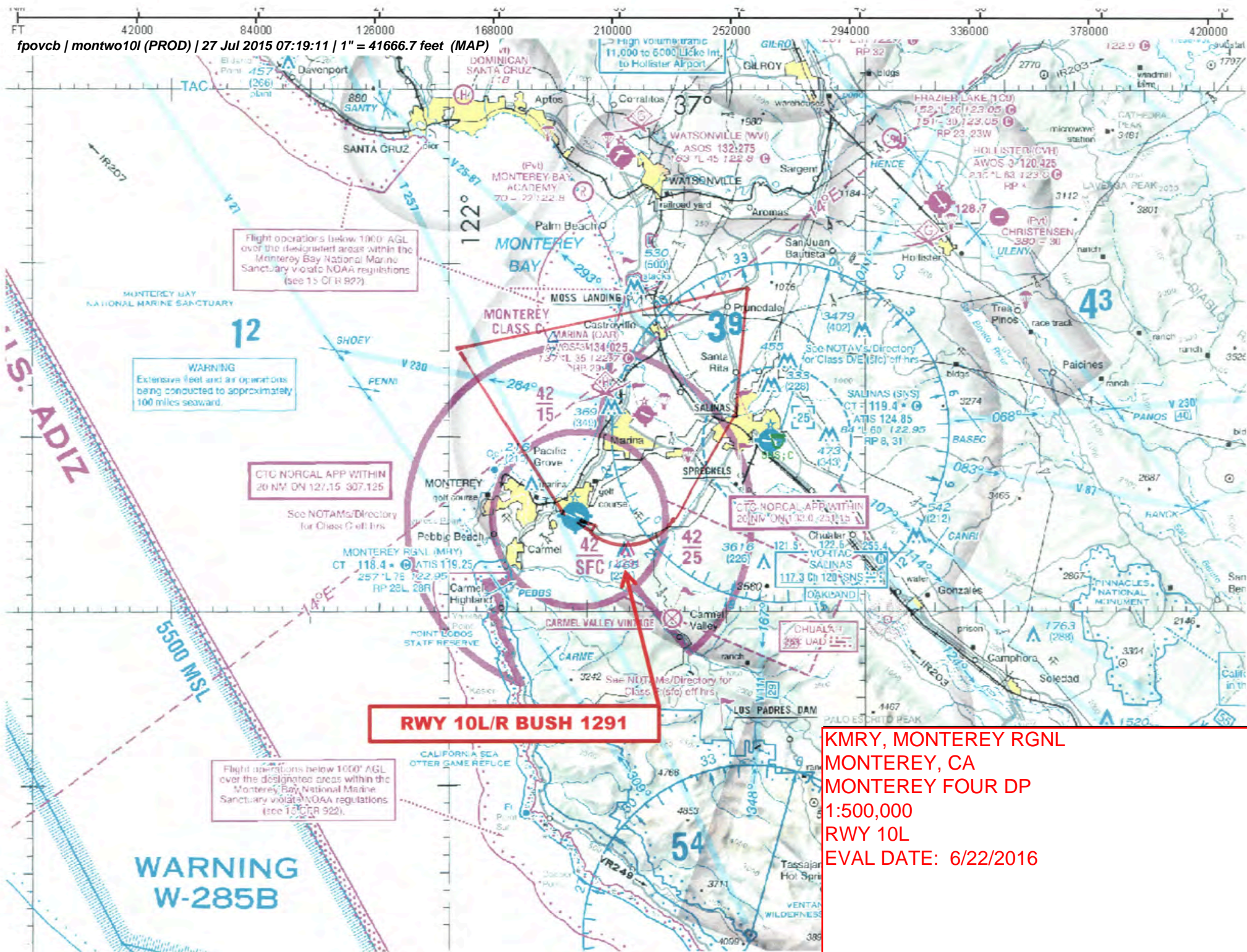


KMRY, MONTEREY RGNL  
MONTEREY, CA  
MONTEREY FOUR DP  
1:100,000  
RWY 10L  
EVAL DATE: 6/22/2016

RWY 10L/R BUSH 1291



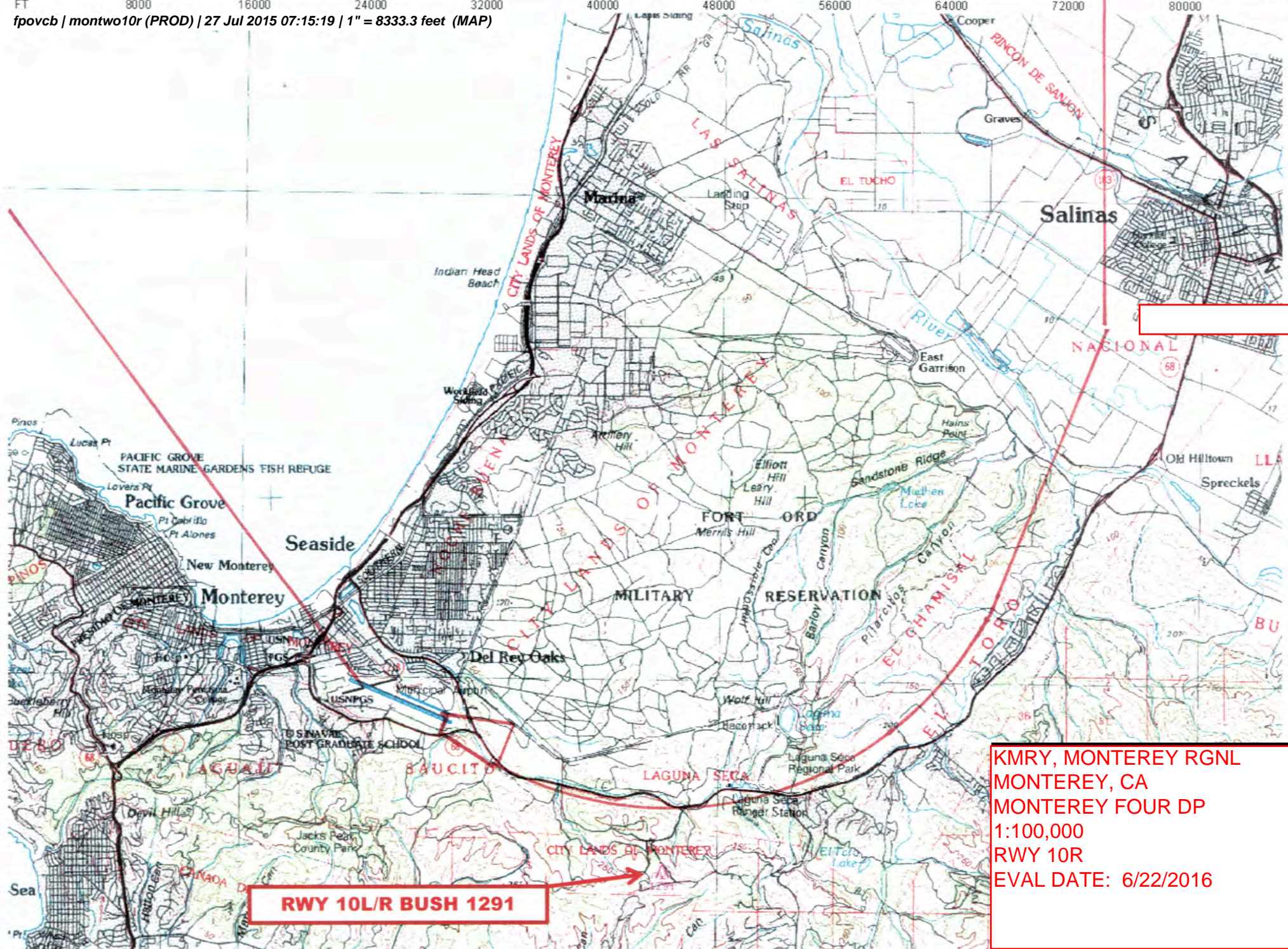
**fpovcb / montwo10l (PROD) / 27 Jul 2015 07:19:11 / 1" = 41666.7 feet (MAP)**





NM 1 2 3 4 5 6 7 8 9 10 11 12 13 14  
FT 8000 16000 24000 32000 40000 48000 56000 64000 72000 80000

fpovcb / montwo10r (PROD) / 27 Jul 2015 07:15:19 / 1" = 8333.3 feet (MAP)

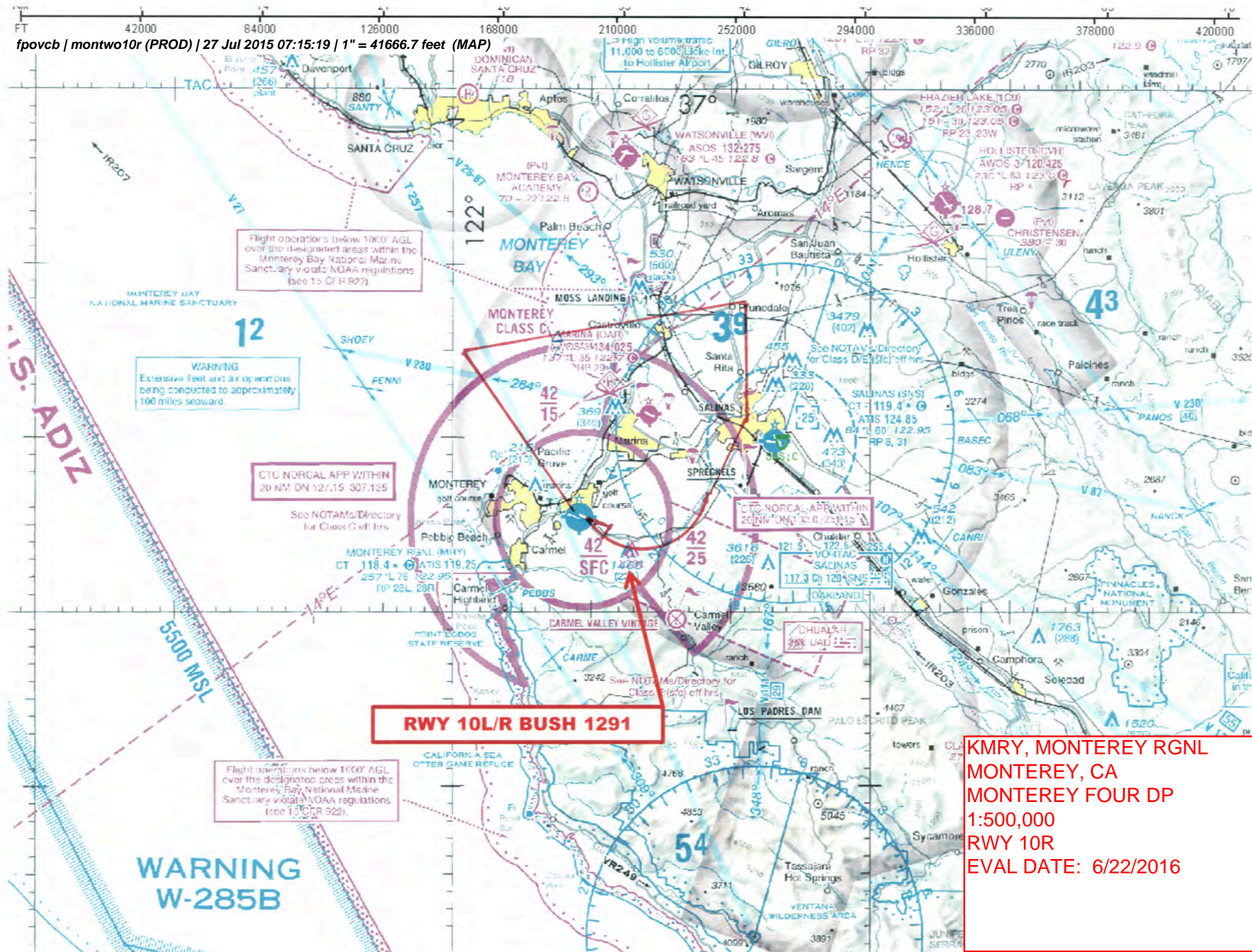


**RWY 10L/R BUSH 1291**

**KMRY, MONTEREY RGNL  
MONTEREY, CA  
MONTEREY FOUR DP  
1:100,000  
RWY 10R  
EVAL DATE: 6/22/2016**



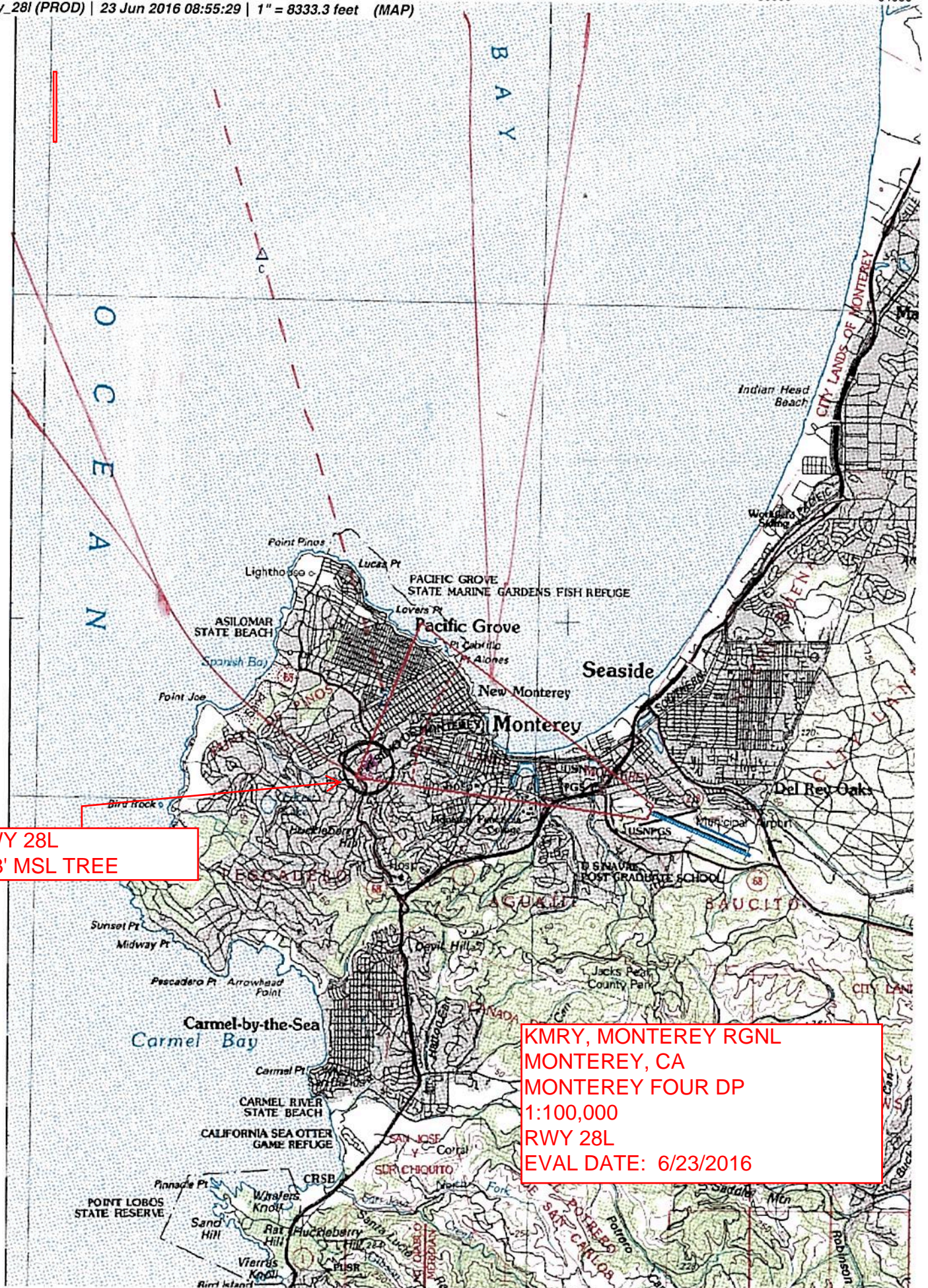
fpovcb / montwo10r (PROD) / 27 Jul 2015 07:15:19 / 1" = 41666.7 feet (MAP)



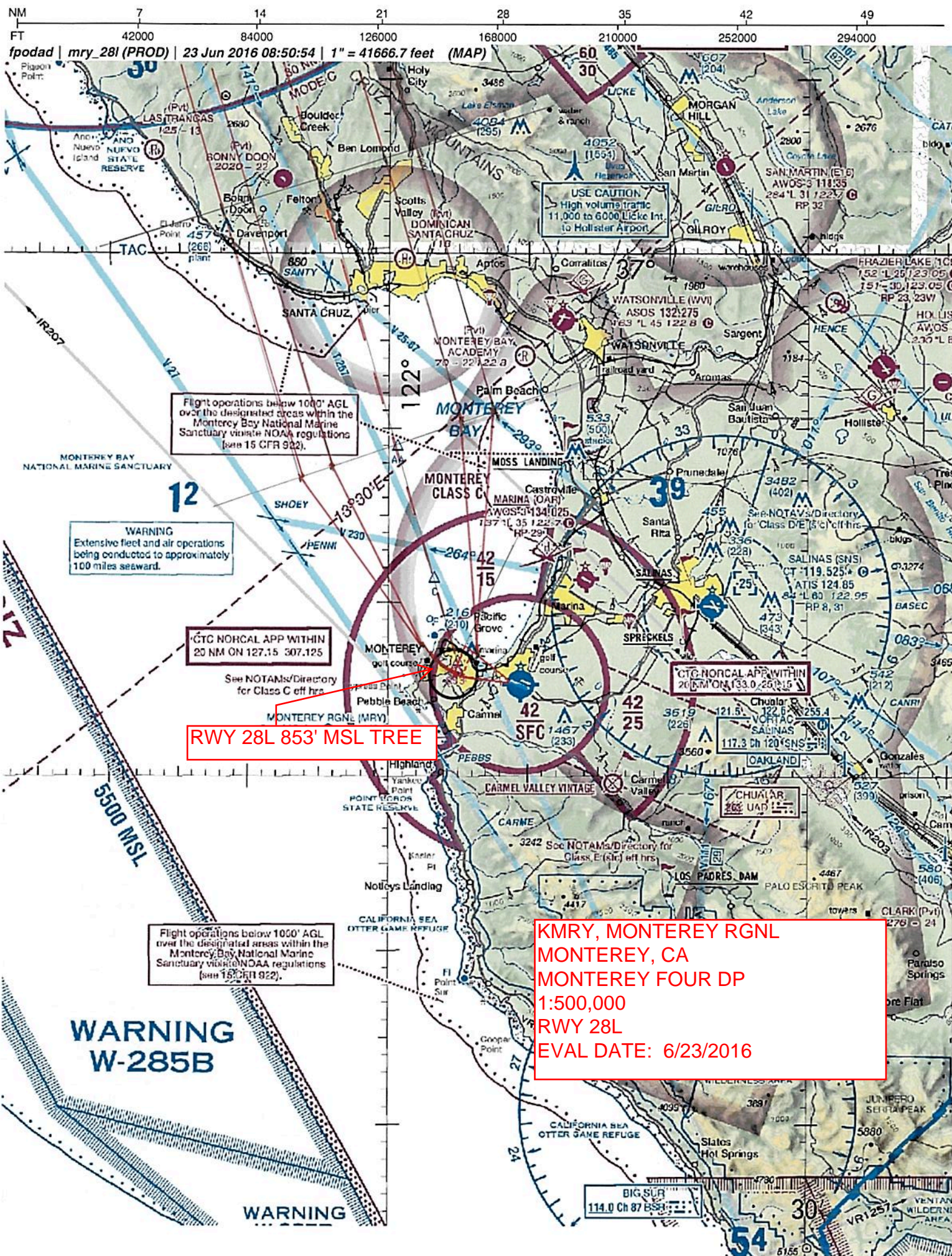


RWY 28L  
853' MSL TREE

KMRY, MONTEREY RGNL  
MONTEREY, CA  
MONTEREY FOUR DP  
1:100,000  
RWY 28L  
EVAL DATE: 6/23/2016







fpodad | mry\_28l (PROD) | 23 Jun 2016 08:50:54 | 1" = 41666.7 feet (MAP)

USE CAUTION  
High volume traffic  
11,000 to 6000 Lick Int.  
to Hollister Airport

Flight operations below 1000' AGL  
over the designated areas within the  
Monterey Bay National Marine  
Sanctuary violate NOAA regulations  
(see 15 CFR 922).

WARNING  
Extensive fleet and air operations  
being conducted to approximately  
100 miles seaward.

CTC NORCAL APP WITHIN  
20 NM ON 127.15 307.125

See NOTAMS/Directory  
for Class C off hrs

RWY 28L 853' MSL TREE

CTC NORCAL APP WITHIN  
20 NM ON 133.0 250.15

CHUALAR  
200' UAD

KMRY, MONTEREY RGNL  
MONTEREY, CA  
MONTEREY FOUR DP  
1:500,000  
RWY 28L  
EVAL DATE: 6/23/2016

Flight operations below 1000' AGL  
over the designated areas within the  
Monterey Bay National Marine  
Sanctuary violate NOAA regulations  
(see 15 CFR 922).

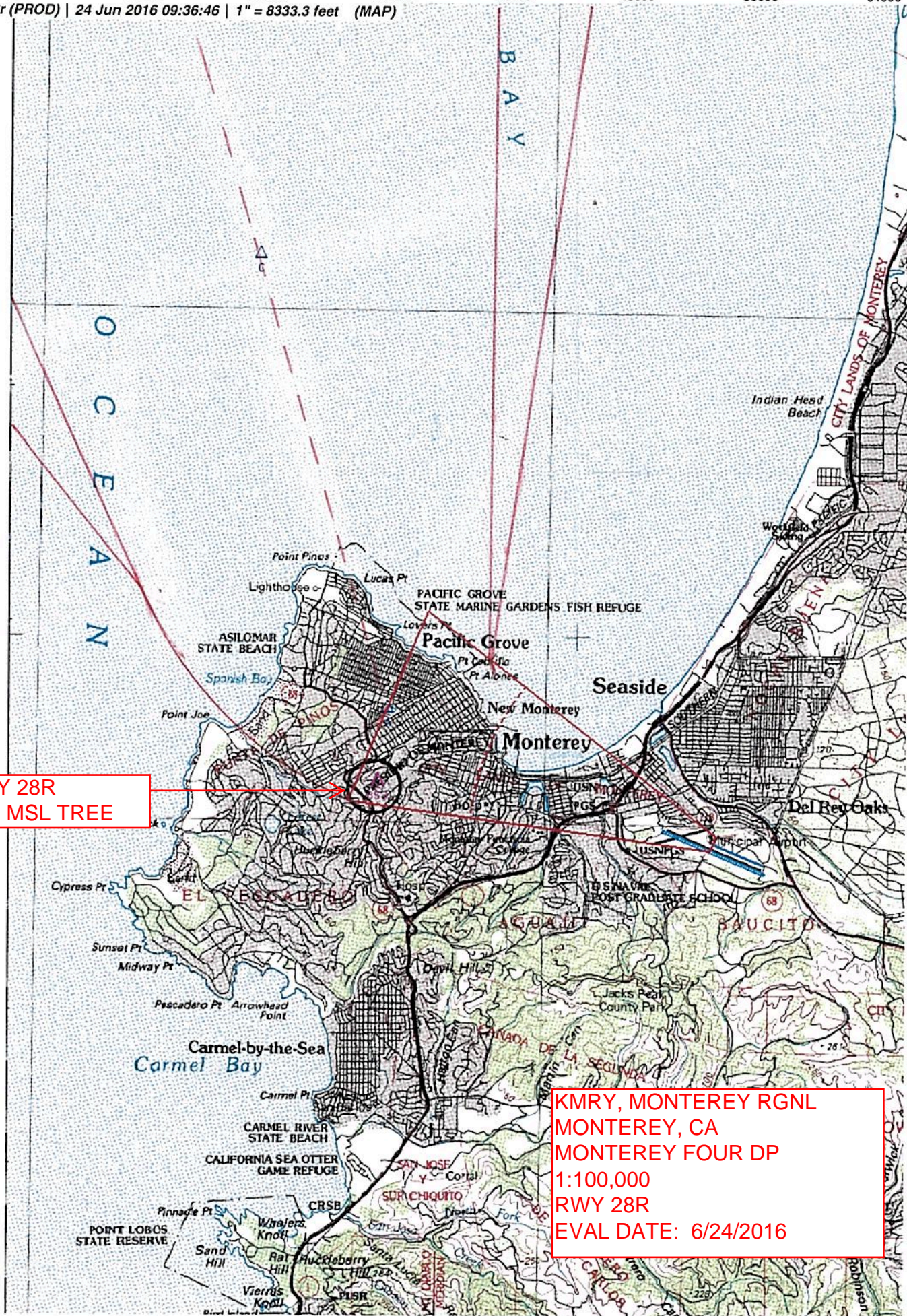
WARNING  
W-285B

BIG SUR  
114.0 Ch 87 BSS

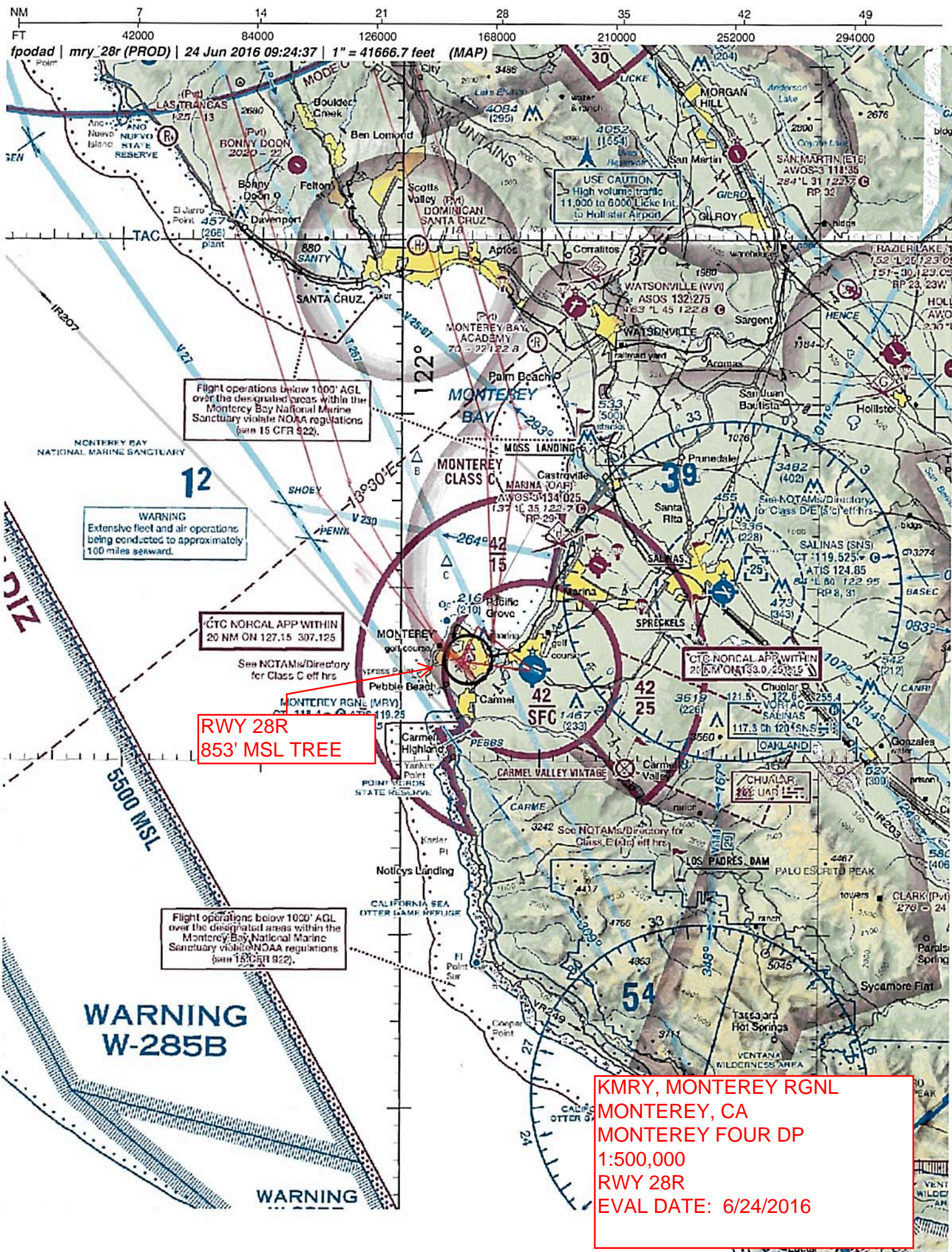


RWY 28R  
853' MSL TREE

KMRY, MONTEREY RGNL  
MONTEREY, CA  
MONTEREY FOUR DP  
1:100,000  
RWY 28R  
EVAL DATE: 6/24/2016









Rwy 28R  
 mean level

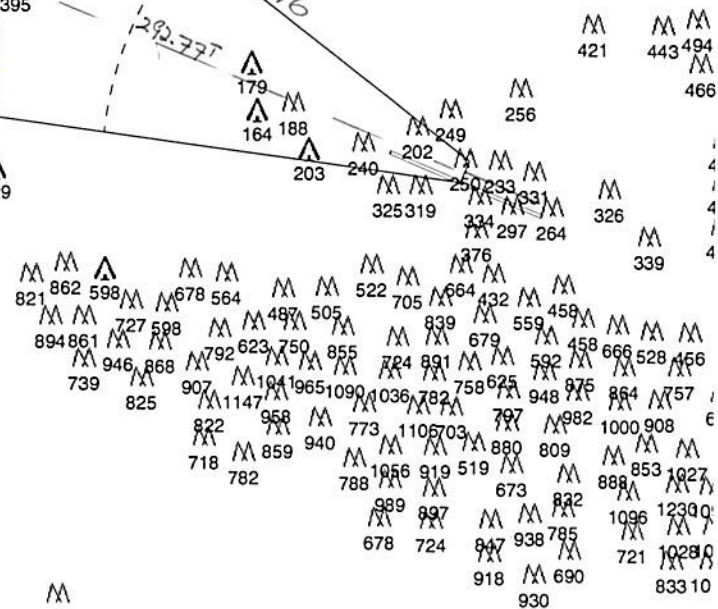
329°

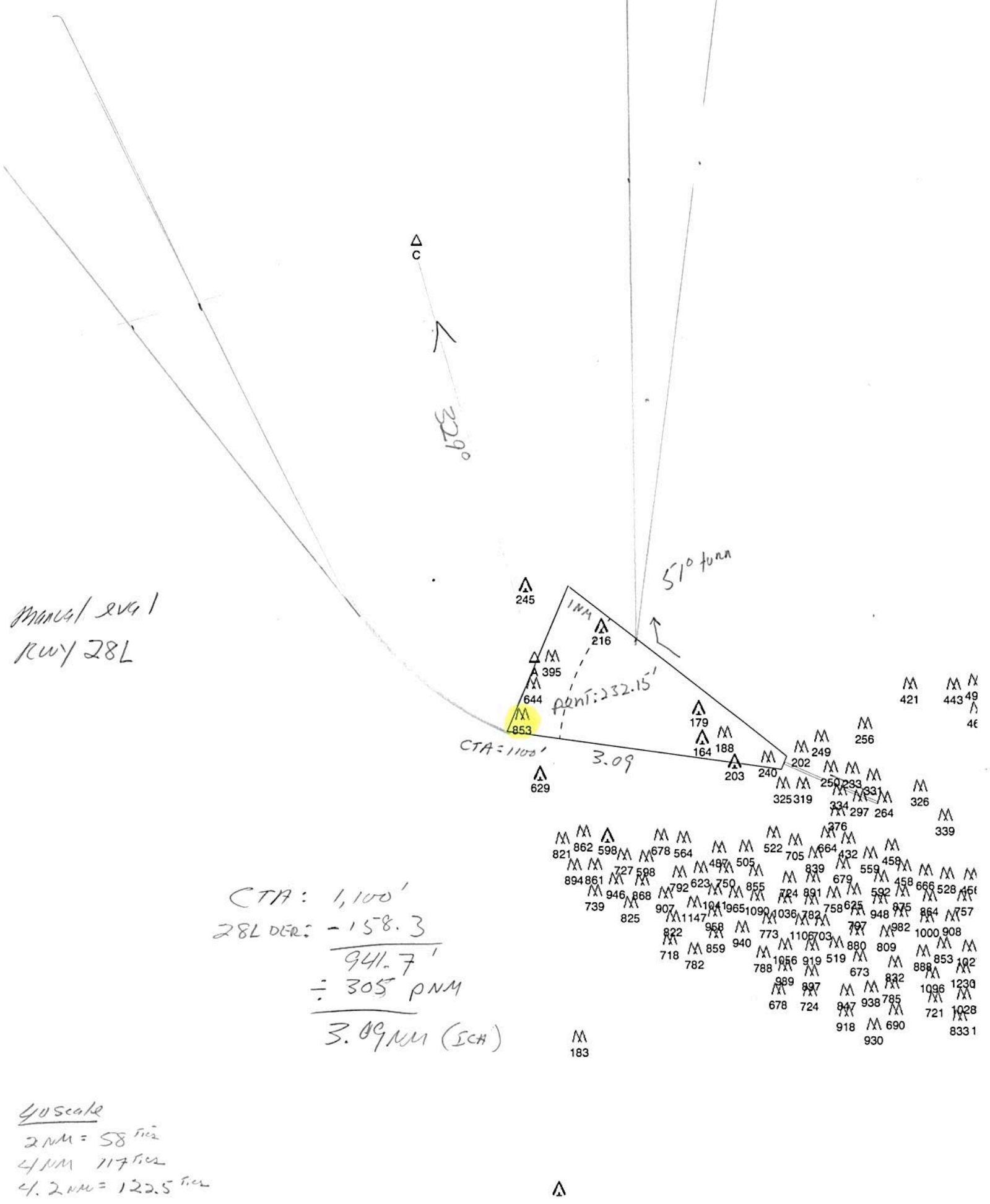
(CTA)

510

107.7' penetration

1,100' CTA  
 -198.1 DER  
 901.9'  
 ÷ 240 CG  
 3.76 NM ICA





CTA: 1,100'  
28L DER: -158.3  
941.7'  
÷ 305 pnm  
3.09nm (SCH)

2 NM = 58 fcs  
4 NM 117 fcs  
4.2 NM = 122.5 fcs

 $\Delta$

**DEPARTMENT OF TRANSPORTATION  
FEDERAL AVIATION ADMINISTRATION  
CATEGORICAL EXCLUSION DECLARATION**

**Monterey Regional Airport**

**AMENDMENTS TO PROCEDURES**

**Description of Action:**

**The FAA is proposing the following amendments to procedures at the Monterey Regional Airport (KMRY) in Monterey, California:**

- 1. Localizer/Distance Measuring Equipment (LOC/DME) Runway (RWY) 28L:  
The procedure is currently out of service due to the impact of precipitous terrain adjustments in the intermediate segments. FAA is proposing amendments to relocate fixes and adjust altitudes to account for terrain and current criteria. The ground track has not changed.**
- 2. The MONTEREY DEPARTURE procedure was amended in April 2015. For runways 28L/28R, the previous procedure had a climb-to altitude of 1100' MSL before turning right. In the April amendment, that restriction was removed. Northern California Terminal Radar Approach Control Facility submitted an operational improvement request to restore the turn altitude restriction to the procedure as previously published.**

**Declaration of Exclusion:**

The FAA has reviewed the above referenced proposed action and it has been determined, by the undersigned, to be categorically excluded from further environmental documentation according to FAA Order 1050.1F, "Environmental Impacts: Policies and Procedures." The implementation of this action will not result in any extraordinary circumstances in accordance with FAA Order 1050.1F.

**Basis for this Determination:**

An Initial Environmental Review was conducted by the Western Service Center and is attached. This review was conducted in accordance with policies and procedures in Department of Transportation Order 5610.1C, "Procedures for Considering Environmental Impacts" and FAA Order 1050.1F.

The applicable categorical exclusion is:

***5-6.5.p. Establishment of new procedures that routinely route aircraft over non-noise sensitive areas.***



**Recommended by:**

**Facility Manager Review/Concurrence**

Signature: \_\_\_\_\_

Date: \_\_\_\_\_

Name: \_\_\_\_\_

Donald H. Kirby

Air Traffic Manager

Northern California Terminal Radar Approach Control Facility

**Concurrence by:**

**Western Service Area Environmental Specialist**

Signature: \_\_\_\_\_

Date: \_\_\_\_\_

Name: \_\_\_\_\_

Augustin Moses

Environmental Protection Specialist, Operations Support Group,

Western Service Center, AJV-W22

**Approval by:**

**Western Service Area Director or Designee Approval**

Signature: \_\_\_\_\_

Date: \_\_\_\_\_

Name: \_\_\_\_\_

Ronald Fincher

Director, Air Traffic Operations, South,

Western Service Area, AJTWS