

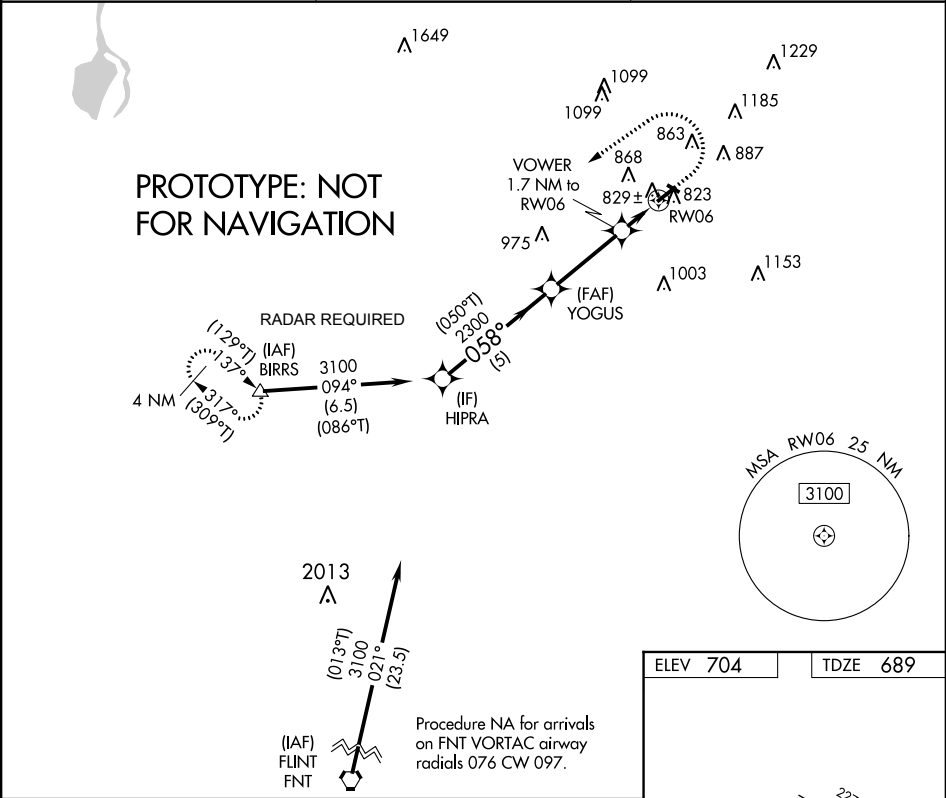
<b>Flight Procedure Tracking Form</b>		<b>Action:</b> FLIGHT CHECK	<b>Task Type:</b> IAP	<b>Date Open:</b> 09/23/2015	<b>Task #:</b> 2015092330259301002	<b>Request #:</b> 20150923302593
<b>Procedure:</b> RNAV (GPS) RWY 6 AMDT 1			<b>Airport ID:</b> KCFS	<b>Airport:</b> TUSCOLA AREA		<b>Reimbursable #:</b> NO
<b>City:</b> CARO	<b>ST:</b> MI	<b>GPS #:</b>	<b>Estimated Chart Date:</b> 05/26/2016		<b>FICO #:</b>	
<b>Fac ID:</b> NOCHANGE		<b>Fac. Type:</b>			<b>Specialist:</b> THOMAS KIRKPATRICK	
<b>Procedure Review</b>						
	<b>Rec'd</b>	<b>Rel'd</b>	<b>Full Name</b>	<b>Comments</b>		
<b>Lead:</b>	11/02/2015	12/18/2015	JACOB POWERS			
<b>QA:</b>	12/18/2015	1/14/2016	J ZEDER 16			
<b>Liaison:</b>						
<b>Procedure Comments:</b> ENROUTE-NON DIGITAL PROCESS  CONTACT: JACOB POWERS 405-954-8702 / PETE GETZ 405-954-4919 ASSIGNED MAG VAR: KCFS: OLD 6W - NEW 8W						

APP CRS	Rwy Idg	<b>4302</b>
<b>058°</b>	TDZE	<b>689</b>
	Apt Elev	<b>704</b>

RNAV (GPS) RWY 6  
TUSCOLA AREA (CFS)

<p><b>⚠</b> DME/DME RNP-0.3 NA. Helicopter visibility reduction below 1 SM NA. Procedure NA at night. When local altimeter setting not received, use Saginaw/MBS Intl altimeter setting and increase all MDA 80 feet. Circling NA to RWYS 13 and 31.</p>	<p><b>MISSED APPROACH:</b> Climb to 1100 then climbing left turn to 3100 direct BIRRS and hold.</p>
--	---

AWOS-3 <b>119.275</b>	SAGINAW APP CON ★ <b>120.95 235.625</b>	UNICOM <b>123.0 (CTAF) 0</b>
--------------------------	--	---------------------------------



VGSI and descent angles not coincident (VGSI Angle 3.00/TCH 25).		1100	3100	BIRRS
		↑	↩	△
HIPRA	YOGUS	VOWER	RW06	
3100	2300	1260		
5 NM		3.3 NM	1.7 NM	
CATEGORY	A	B	C	D
LNVA MDA	1080-1	391 (400-1)	NA	
<b>C</b> CIRCLING	1200-1	496 (500-1)	NA	

REIL Rwy 6 and 24 **0**  
MIRL Rwy 6-24 **0**

TUSCOLA AREA (CFS)  
RNAV (GPS) RWY 6

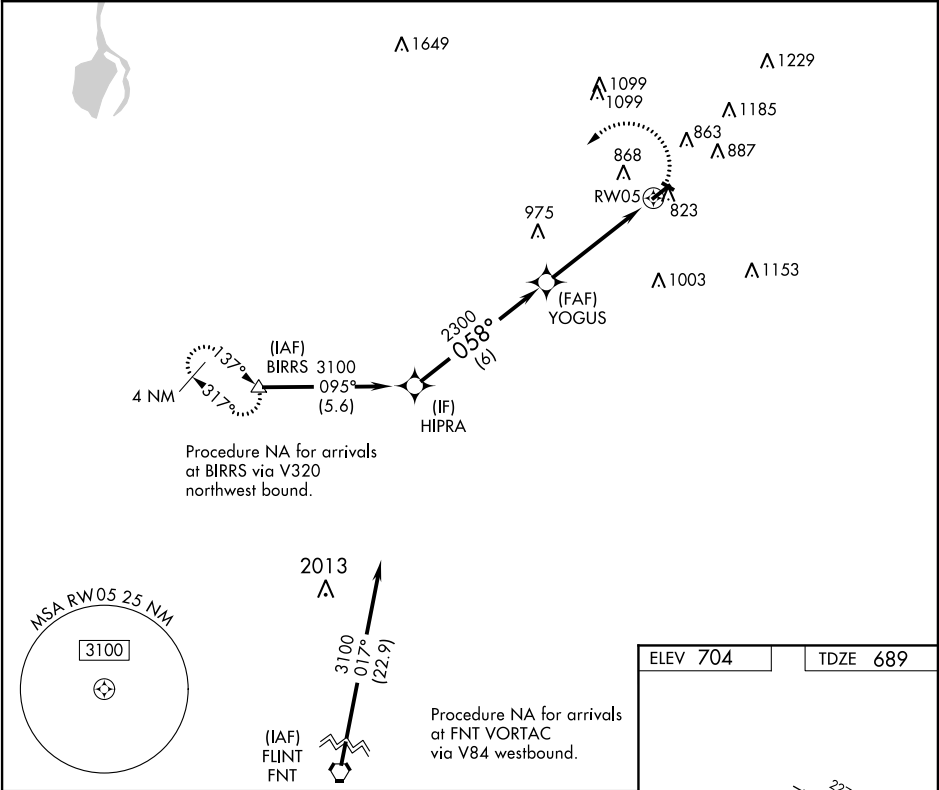
APP CRS	Rwy Idg	4302
058°	TDZE	689
	Apf Elev	704

RNAV (GPS) RWY 5  
TUSCOLA AREA (CFS)

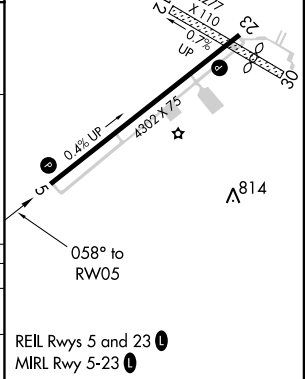
**⚠** When local altimeter setting not received, use Saginaw/MBS Intl altimeter setting and increase all MDA 80 feet. Helicopter visibility reduction below 1 SM NA. DME/DME RNP-0.3 NA. Procedure NA at night.

**MISSED APPROACH:**  
Climbing left turn to 3100  
direct BIRRS and hold.

AWOS-3 119.275	SAGINAW APP CON ★ 120.95 235.625	UNICOM 123.0 (CTAF) ①
-------------------	-------------------------------------	--------------------------



VGSi and descent angles not coincident (VGSi Angle 3.00/TCH 25).				
CATEGORY	A	B	C	D
LNNAV MDA	1100-1	402 (400-1)	NA	
CIRCLING	1220-1	516 (600-1)	NA	



EC-1, 15 OCT 2015 to 12 NOV 2015

EC-1, 15 OCT 2015 to 12 NOV 2015

**SAGINAW TRSA**  
**FREQ INFO ON ATIS**

- 
- МОН  
РЕСПУБЛИКИ  
КАЗАХСТАН

FLINT CLASSIC INFORMATION  
ON ATIS 133.15 WITHIN 20 NM



(CFS)  
TUSCOLA AREA  
CARO, MI  
RNAV (GPS) RWY 6  
AMDT 1  
SCALE: 1:100,000

