

Flight Procedure Tracking Form		Action: FLIGHT CHECK	Task Type: IAP	Date Open: 04/22/2016	Task #: 2015092131400901010	Request #: 20150921314009
Procedure: RNAV (GPS) RWY 35R ORIG			Airport ID: KAPA	Airport: CENTENNIAL		Reimbursable #: NO
City: DENVER	ST: CO	GPS #:	Estimated Chart Date: 11/10/2016		FICO #:	
Fac ID: NOCHANGE		Fac. Type:			Specialist: BRETT CANNON	
Procedure Review						
	Rec'd	Rel'd	Full Name	Comments		
Lead:	03/30/2016	05/04/2016	ALLAN WILL			
QA:	05/04/2016					
Liaison:						
Procedure Comments:			ENROUTE-NON	Remark Type: INFORMATION		
8260-1 (1) CONTACT: ALLAN WILL/JOHNNIE BAKER, LEAD, 405.954.6103/5148						



1. FLIGHT PROCEDURE IDENTIFICATION:

Denver, CO
Denver/Centennial (APA)
RNAV (GPS) RWY 35R

2. WAIVER REQUIRED AND APPLICABLE STANDARD:

FAA Order 8260.19G, Paragraph 2-11-5: Controlling obstacles.
200' AAO was not applied beyond the 20,000' exempt area in final. 100' vegetation additive was applied to high terrain in this area.

3. REASON FOR WAIVER (JUSTIFICATION FOR NONSTANDARD TREATMENT):

Application of 200' AAO raises the LPV HAT from 200 to 1379 and renders the vertically-guided final unusable. Increasing the glideslope angle to greater than 3.10 would necessitate an additional waiver request.

4. EQUIVALENT LEVEL OF SAFETY PROVIDED:

The airport has agreed to maintain constant dialogue with the county authorities and the surrounding cities to object to any proposed man-made obstacle within the final approach area from the 20,000' AAO exempt area to the PFAF. The county will enforce their zoning resolution and make every effort to forestall all proposed obstacles.

5. ALTERNATIVE ACTIONS DEEMED NOT FEASIBLE:

The PFAF location cannot be adjusted as this coincides with the altitude required by ATC. The airport has recently raised the ILS Glideslope from 3.00 to 3.10 to mitigate current obstacles. Relocation of facilities will not negate the requirement for the waiver.

6. COORDINATION WITH USER ORGANIZATIONS (SPECIFY):

ZDV, DEN APP CON, APA ATCT, AMGR, CO AERO

7. SUBMITTED BY:

DATE	OFFICE IDENTIFICATION	TITLE
	AJV-54	IFP GROUP MANAGER

SIGNATURE
STEVEN SZUKALA

Digitally signed by
JOHNNIE BAKER

Jul 12, 2016

8. AFS ACTIONS:

☐ APPROVED ☐ DISAPPROVED ☐ NOT REQUIRED

COMMENTS:

DATE	ROUTING SYMBOL	SIGNATURE
------	----------------	-----------

OLD

DENVER, COLORADO

AL-5715 (FAA)

15232

WAAS CH 93508 W35A	APP CRS 350°	Rwy Idg TDZE 5885 Apt Elev 5885
--	------------------------	---

RNAV (GPS) Y RWY 35R

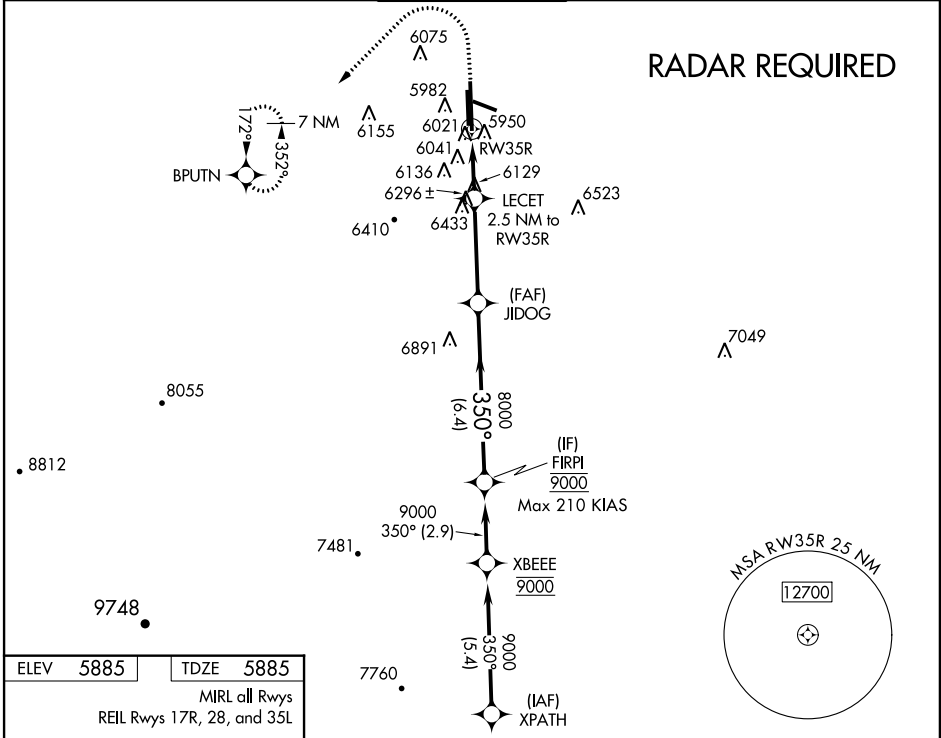
CENTENNIAL (APA)

⚠ For uncompensated Baro-VNAV systems, LNAV/VNAV NA below -20°C (-4°F) or above 36°C (96°F). DME/DME RNP-0.3 NA.
⚠ Night Landing: Rwy 35L NA.

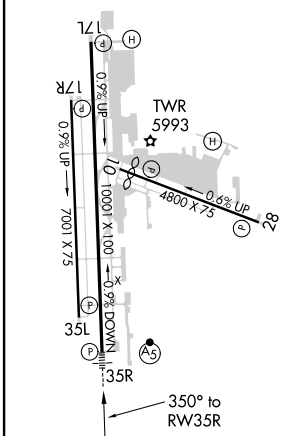


MISSED APPROACH: Climb to 8200 then climbing left turn to 9600 direct BPUTN and hold.

ATIS 120.3	DENVER APP CON 132.75 269.3	CENTENNIAL TOWER 118.9	GND CON 121.8	CLNC DEL 128.6
----------------------	---------------------------------------	----------------------------------	-------------------------	--------------------------



ELEV 5885	TDZE 5885
MIRL all Rwys REIL Rwys 17R, 28, and 35L	



8200	9600	BPUTN	VGSI and RNAV glidepath not coincident (VGSI Angle 3.00/TCH 45).		FIRPI
* LNAV only		LECET 2.5 NM to RW35R	JIDOG	8000	9000
RW35R		* 1.4 NM to RW35R	6740*	8000	GP 3.10° TCH 51
1.4 NM		1.1 NM	3.8 NM	6.4 NM	
CATEGORY	A	B	C	D	
LPV DA	6085-½ 200 (200-½)				
LNAV/VNAV DA	6321-1 436 (500-1)				
LNAV MDA	6380-½ 495 (500-½)		6380-1 495 (500-1)		
C CIRCLING	6400-1 515 (600-1)	6540-1 655 (700-1)	6740-2½ 855 (900-2½)	6900-3 1015 (1100-3)	

DENVER, COLORADO

Amtd 2 20AUG15

39°34'N-104°51'W

CENTENNIAL (APA)

RNAV (GPS) Y RWY 35R

SW-1, 17 SEP 2015 to 15 OCT 2015

SW-1, 17 SEP 2015 to 15 OCT 2015

WAAS CH 40339 W35A	APP CRS 350°	Rwy Idg TDZE Apt Elev	10000 5885 5885
--	------------------------	-----------------------------	--

RNAV (GPS) RWY 35R

CENTENNIAL (APA)

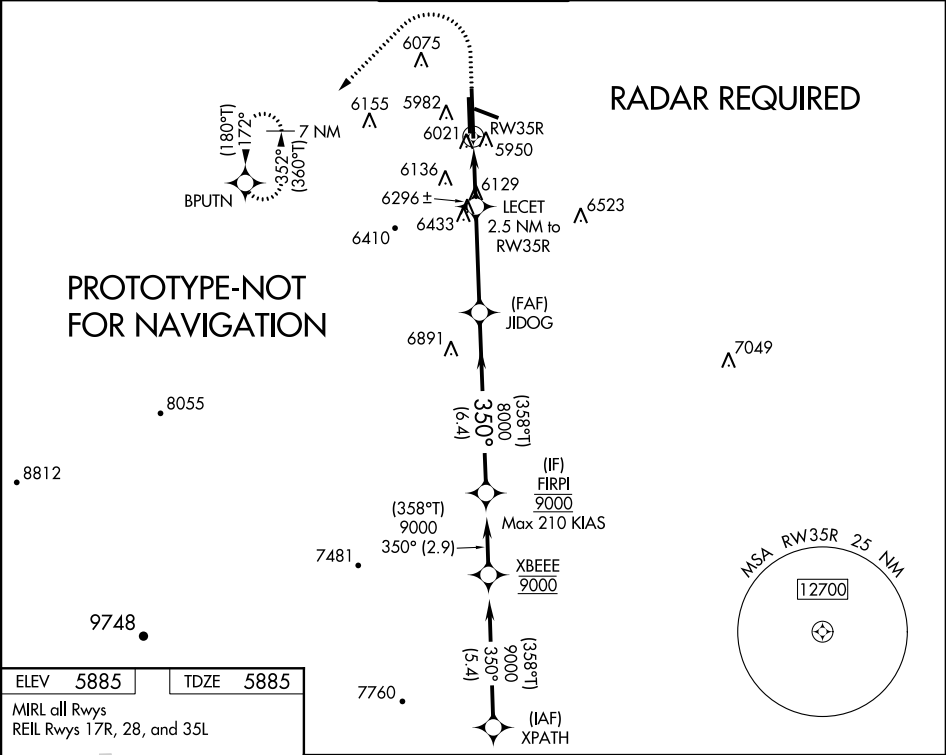
⚠

For uncompensated Baro-VNAV systems, LNAV/VNAV NA below -21°C (-5°F) or above 36°C (96°F). DME/DME RNP-0.3 NA. Circling Rwy 35L NA at night. For inop ALS, increase LNAV/VNAV all Cats and LNAV Cats C/D visibility to 1 3⁄8 mile.

MALSR

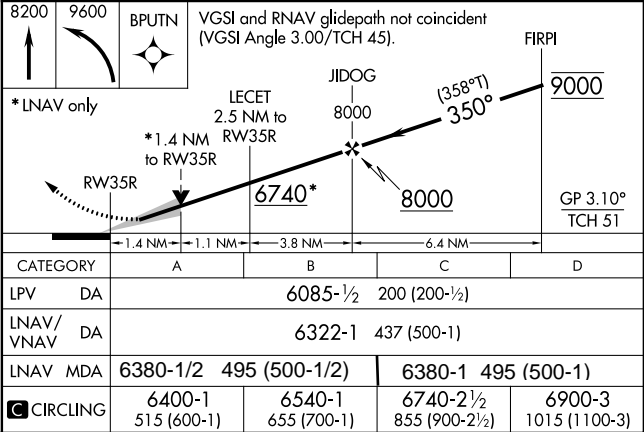
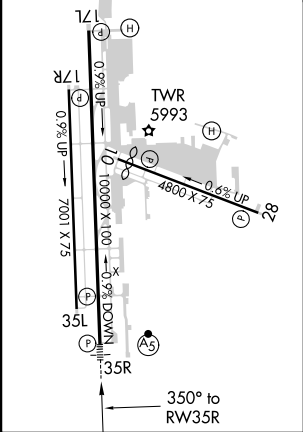
MISSED APPROACH: Climb to 8200 then climbing left turn to 9600 direct BPUTN and hold.

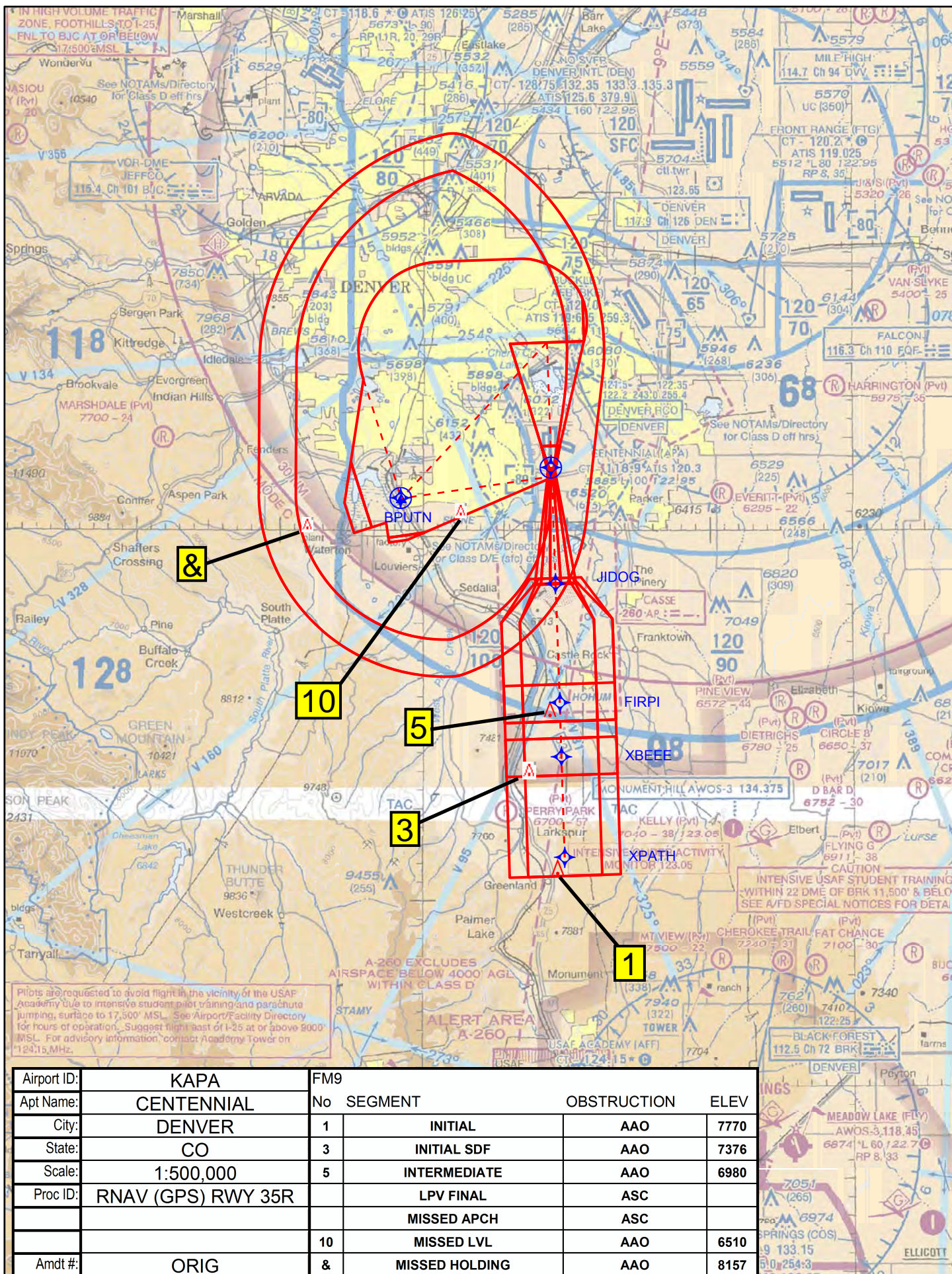
ATIS 120.3	DENVER APP CON 132.75 269.3	CENTENNIAL TOWER 118.9	GND CON 121.8	CLNC DEL 128.6
----------------------	---------------------------------------	----------------------------------	-------------------------	--------------------------

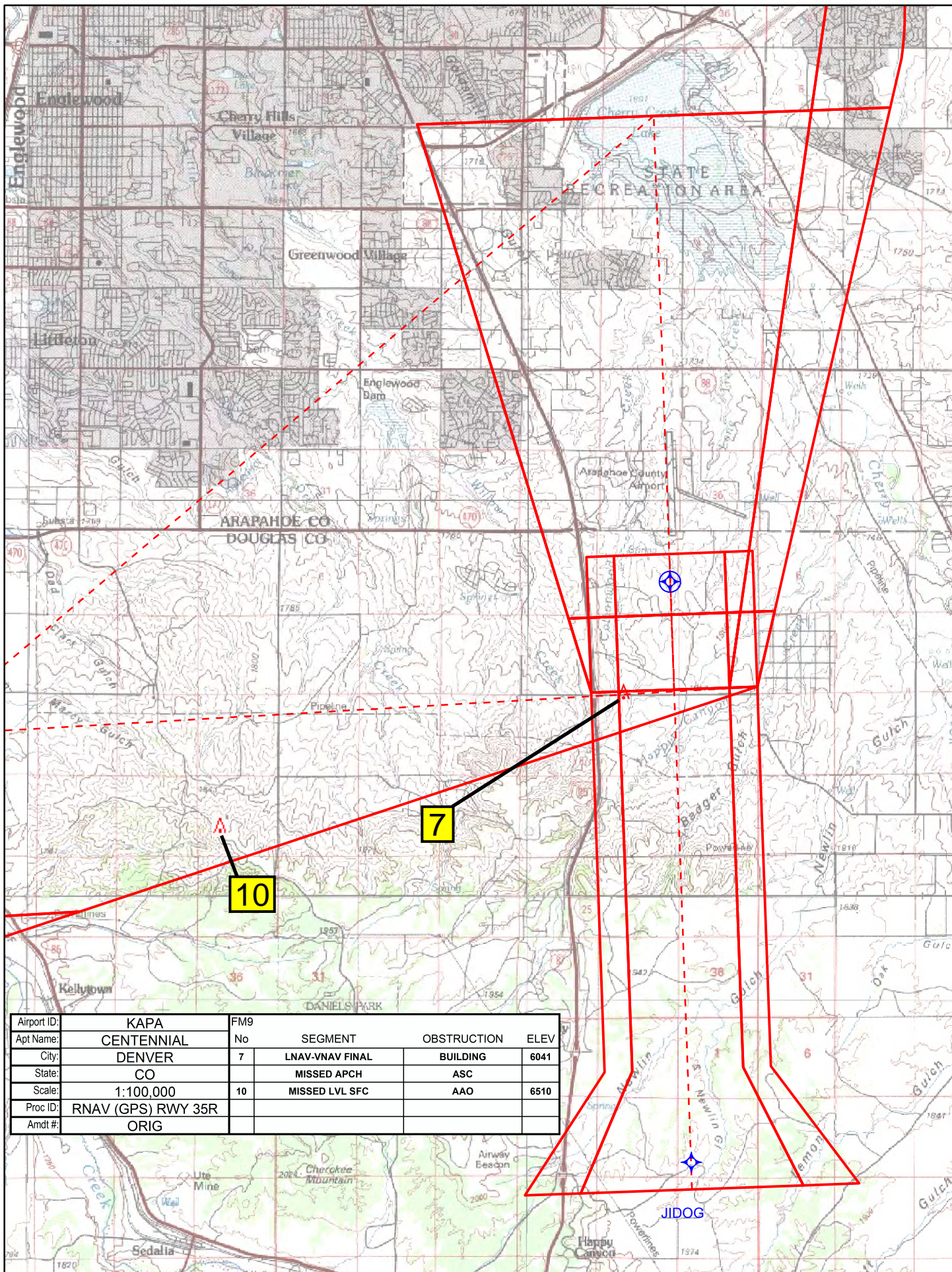


ELEV 5885	TDZE 5885
-----------	-----------

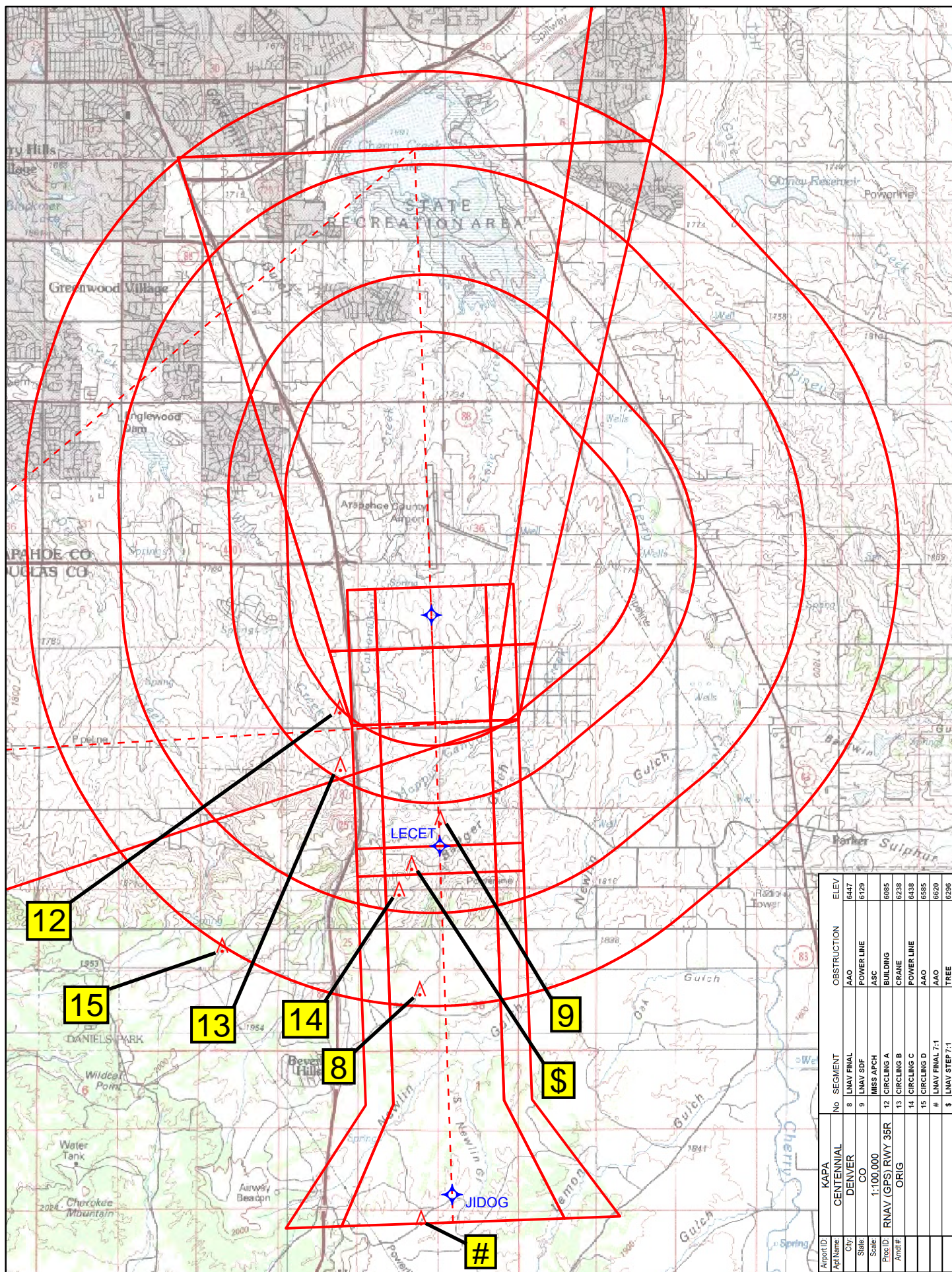
MIRL all Rwys
REIL Rwys 17R, 28, and 35L







Airport ID:	KAPA	FM9			
Apt Name:	CENTENNIAL	No	SEGMENT	OBSTRUCTION	ELEV
City:	DENVER	7	LNAV-VNAV FINAL	BUILDING	6041
State:	CO		MISSED APCH	ASC	
Scale:	1:100,000	10	MISSED LVL SFC	AAO	6510
Proc ID:	RNAV (GPS) RWY 35R				
Amdt #:	ORIG				



TERMINAL AIRSPACE DATA REQUIREMENTS

CITY:

STATE:

AIRPORT NAME:

ID:

PROCEDURE:

AMDT:

DOCKET # :

(96-AXX-X/Required/Not Required)

ALL DIST TO 1/100 NM; ELEV TO NEAREST FT; COORD TO 1/100 SEC; DEG TO 1/100 DG.

1. Distance from _____ to 1000' point _____

(Enter THLD, FAF, ARP, FACILITY, as appropriate)

2. Width of _____ segment at 1000' point _____

(Enter appropriate segment , final, intermediate, etc.)

3. True Course of _____ segment containing 1000' point _____

4. High Terrain in _____ segment containing 1000' point _____

5. Distance from _____ to 1500' point _____

(If 1500' point in PT maneuvering area or holding pattern note in remarks)

6. Width of _____ segment at 1500' point _____

7. True Course of _____ segment containing 1500' point _____

8. High Terrain in _____ segment containing 1500' point _____

9. Threshold Coordinates (if straight-in) ... _____ / _____

10. ARP Coordinates _____ / _____

11. Runway Approach End and distance furthest from ARP.....RWY _____

Distance _____ NM

12. FAF Coordinates _____ / _____

(Click to Select)

REMARKS: