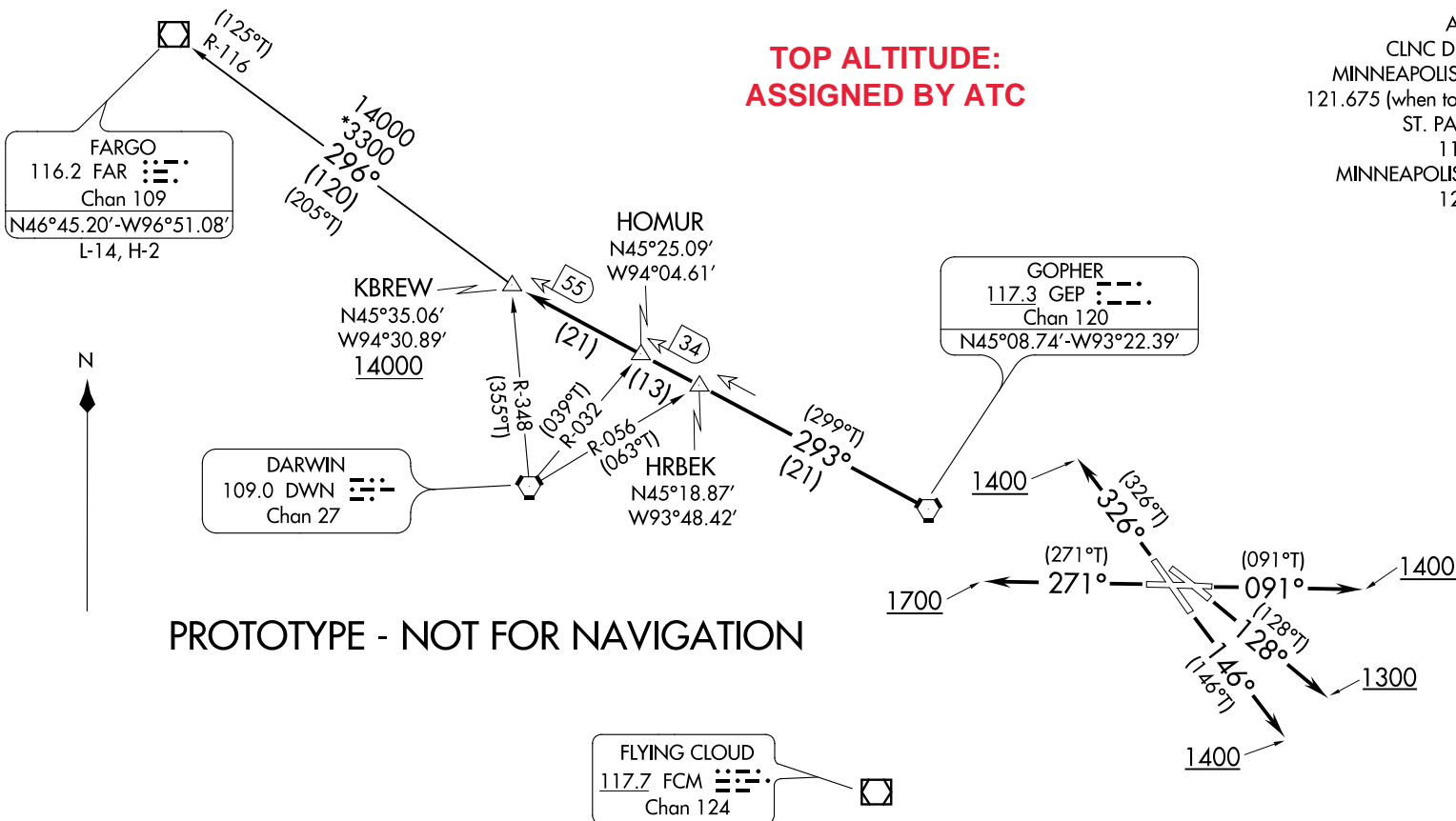


| | | | | | | |
|--|---------------|--------------------------------|---|---|---------------------------------------|-------------------------------------|
| Flight Procedure Tracking Form | | Action: FLIGHT CHECK | Task Type: SID | Date Open: 09/23/2015 | Task #: 2015091430187603004 | Request #: 20150914301876 |
| Procedure: SID KBREW NINE ST PAUL MN KSTP | | | Airport ID: KSTP | Airport: ST PAUL DOWNTOWN HOLMAN FLD | | Reimbursable #: NO |
| City: ST PAUL | ST: MN | GPS #: | Estimated Chart Date: 08/17/2017 | | FICO #: | |
| Fac ID: N/A | | Fac. Type: | | | Specialist: IVAN BLANCO | |
| Procedure Review | | | | | | |
| | Rec'd | Rel'd | Full Name | Comments | | |
| Lead: | 12/13/2016 | 02/22/2017 | JACOB POWERS | QUALITY | | |
| QA: | 02/22/2017 | | | 3 | | |
| Liaison: | | | | CHECKED | | |
| Procedure Comments: | | | ENROUTE | Remark Type: INFORMATION | | |
| <p>MAG VAR ROTATION, KSTP: OLD 3E - NEW 0E. MINOR AMDT TO UPDATE INITIAL HEADINGS ONLY. PENDING DATA USED FOR KSTP. FLT CHK: REQUEST TABLE-TOP</p> <p>CONTACT JACOB POWERS SUB TEAM MGR: 405.954.8702 PAT MULQUEEN MANAGER: 405.954.4073</p> | | | | | | |

QUALITY
28
CHECKED

ATIS 118.35
CLNC DEL 121.675
MINNEAPOLIS CLNC DEL
121.675 (when tower closed)
ST. PAUL TOWER ★
119.1 257.8
MINNEAPOLIS DEP CON
121.2 357.4

TOP ALTITUDE:
ASSIGNED BY ATC



TAKEOFF MINIMUMS

- Rwy 9: Standard with minimum climb of 340' per NM to 1300.
- Rwy 13: Standard with minimum climb of **235'** per NM to 1500.
- Rwy 14: Standard.
- Rwy 27: 600-2 or standard with minimum climb of 442' per NM to 1500.
- Rwy 31: NA - Obstacles.
- Rwy 32: Standard with minimum climb of 340' per NM to 3000.

NOTE: RADAR required.

NOTE: Chart not to scale.

(NOTES CONTINUED ON FOLLOWING PAGE)
(NARRATIVE ON FOLLOWING PAGE)

AUTOMATED KBREW DEPARTURE REF
AUTOMATED SL-263 KBREW DEPARTURE

NC-1

FEBRUARY 23, 2017

COMPILER: LS

REVIEWER:

DBL CHKR:

EFF DATE: FIG

DEPARTURE ROUTE DESCRIPTION

TAKEOFF RUNWAY 9: Climb heading 091° to 1400 for RADAR vectors to GEP VORTAC then on GEP R-293 to KBREW INT/GEP 55 DME, thence . . .

TAKEOFF RUNWAY 13: Climb heading 128° to 1300 for RADAR vectors to GEP VORTAC then on GEP R-293 to KBREW INT/GEP 55 DME, thence . . .

TAKEOFF RUNWAY 14: Climb heading 146° to 1400 for RADAR vectors to GEP VORTAC then on GEP R-293 to KBREW INT/GEP 55 DME, thence . . .

TAKEOFF RUNWAY 27: Climb heading 271° to 1700 for RADAR vectors to GEP VORTAC then on GEP R-293 to KBREW INT/GEP 55 DME, thence . . .

TAKEOFF RUNWAY 32: Climb heading 326° to 1400 for RADAR vectors to GEP VORTAC then on GEP R-293 to KBREW INT/GEP 55 DME, thence . . .

. . . via transition or assigned route. Expect clearance to filed altitude/flight level 10 (ten) minutes after departure.

FARGO TRANSITION (KBREW9.FAR): From over KBREW INT on FAR R-116 to FAR VOR/DME.

TAKEOFF OBSTACLE NOTES

- Rwy 9: Mobile crane 1362' from DER, 124' left of centerline, 68' AGL/758' MSL.
Trees and silo 1464' from DER, 178' right of centerline up to 116' AGL/816' MSL.
Trees and pole beginning 1.1 NM from DER, left and right of centerline, up to 100' AGL/1099' MSL.
- Rwy 13: Tree and tower beginning 1125' from DER, 609' left of centerline up to 67' AGL/767' MSL.
Tree, pole, vent on building, stacks, and ol on stack beginning 1672' from DER, 55' right of centerline, up to 120' AGL/820' MSL.
Trees beginning 1.9 NM from DER, 2938' left of centerline, up to 100' AGL/1020' MSL.
- Rwy 14: Trees, OL on DME antenna, and pole beginning 290' from DER, 1' right of centerline, up to 129' AGL/819' MSL.
Trees and pole beginning 1099' from DER, 6' left of centerline, up to 87' AGL/777' MSL.
- Rwy 27: Trees, light pole, and flag pole beginning 617' from DER, 198' left of centerline, up to 119' AGL/829' MSL.
OL on antenna, buildings, tower, and tree beginning 810' from DER, 26' right of centerline, up to 165' AGL/955' MSL.
Trees and building beginning 3885' from DER, 120' left of centerline, up to 84' AGL/1014' MSL.
Tower 1.7 NM from DER, 633' left of centerline, up to 569' AGL/1279' MSL.
- Rwy 32: Vehicle on road, trees, railroad, poles, and NAVAID beginning 179' from DER, 267' right of centerline, up to 58' AGL/758' MSL.
Vehicle on road, railroad, and trees beginning 192' from DER, up to 59' AGL/759' MSL.
NAVAID 257' from DER, on centerline, 26' AGL/726' MSL.
Trees, poles, buildings, and tower beginning 3674' from DER, 616' right of centerline, up to 157' AGL/973' MSL.
Trees, buildings, tower, sign and stack beginning 1924' from DER, 378' left of centerline, up to 143' AGL/969' MSL.

AUTOMATED SL-263 KBREW DEPARTURE (CONT PAGE)

NC-1
FEBRUARY 23, 2017
COMPILER: LS
REVIEWER:
DBL CHKR:
EFF DATE: FIG

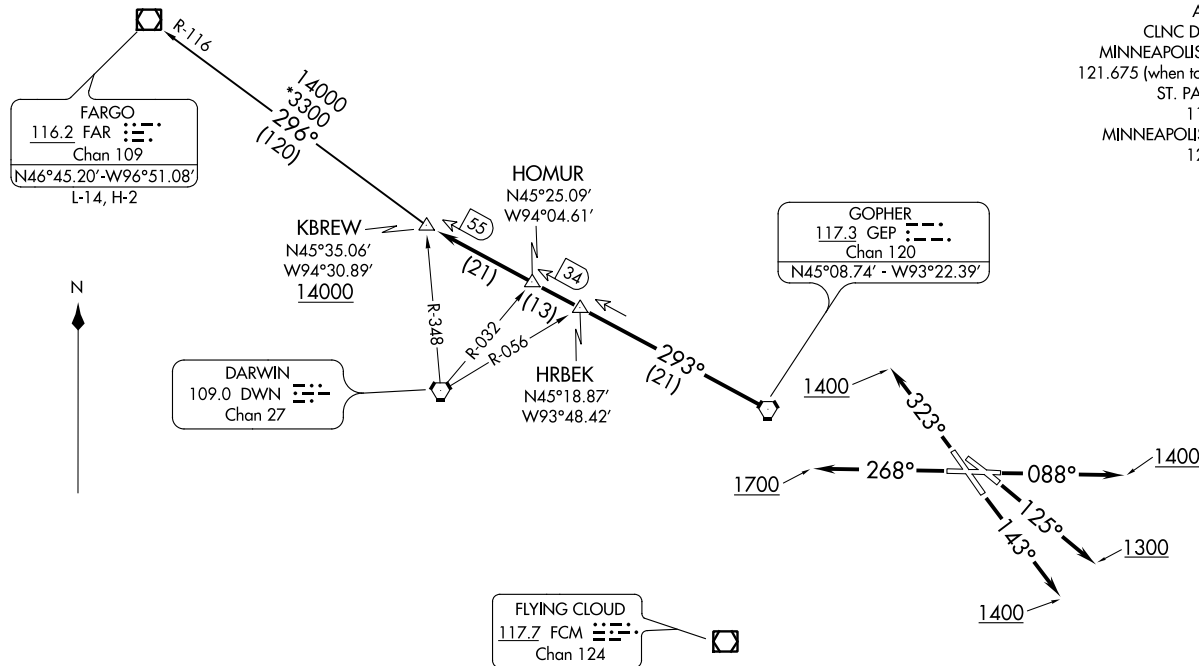
CURRENT -INFO ONLY

(KBREW8.KBREW) 16315
KBREW EIGHT DEPARTURE

SL-263 (FAA)

ST PAUL DOWNTOWN HOLMAN FIELD (STP)
ST PAUL, MINNESOTA

ATIS 118.35
CLNC DEL 121.675
MINNEAPOLIS CLNC DEL
121.675 (when tower closed)
ST. PAUL TOWER ★
119.1 257.8
MINNEAPOLIS DEP CON
121.2 357.4



TAKEOFF MINIMUMS

- Rwy 9: Standard with minimum climb of 340' per NM to 1300.
- Rwy 13: Standard with minimum climb of 230' per NM to 1500.
- Rwy 14: Standard.
- Rwy 27: 600-2 or standard with minimum climb of 442' per NM to 1500.
- Rwy 31: NA - Obstacles.
- Rwy 32: Standard with minimum climb of 340' per NM to 3000.

NOTE: RADAR required.

NOTE: Chart not to scale.

(NOTES CONTINUED ON FOLLOWING PAGE)
(NARRATIVE ON FOLLOWING PAGE)

KBREW EIGHT DEPARTURE
(KBREW8.KBREW) 10NOV16

ST. PAUL, MINNESOTA
ST PAUL DOWNTOWN HOLMAN FIELD (STP)



DEPARTURE ROUTE DESCRIPTON

TAKEOFF RUNWAY 9: Climb heading 088° to 1400 for RADAR vectors to GEP VORTAC then on GEP R-293 to KBREW INT/GEP 55 DME, thence

TAKEOFF RUNWAY 13: Climb heading 125° to 1300 for RADAR vectors to GEP VORTAC then on GEP R-293 to KBREW INT/GEP 55 DME, thence

TAKEOFF RUNWAY 14: Climb heading 143° to 1400 for RADAR vectors to GEP VORTAC then on GEP R-293 to KBREW INT/GEP 55 DME, thence

TAKEOFF RUNWAY 27: Climb heading 268° to 1700 for RADAR vectors to GEP VORTAC then on GEP R-293 to KBREW INT/GEP 55 DME, thence

TAKEOFF RUNWAY 32: Climb heading 323° to 1400 for RADAR vectors to GEP VORTAC then on GEP R-293 to KBREW INT/GEP 55 DME, thence

. . . . via transition or assigned route. Expect clearance to filed altitude/flight level 10 (ten) minutes after departure.

FARGO TRANSITION (KBREW8.FAR): From over KBREW INT on FAR R-116 to FAR VOR/DME.

TAKEOFF OBSTACLE NOTES

- Rwy 9: Mobile crane 1362’ from DER, 124’ left of centerline, 68’ AGL/758’ MSL.
Trees and silo 1464’ from DER, 178’ right of centerline, up to 116’ AGL/816’ MSL.
Trees and pole beginning 1.1 NM from DER, left and right of centerline, up to 100’ AGL/1099’ MSL.
- Rwy 13: Tree and tower beginning 1125’ from DER, 609’ left of centerline, up to 67’ AGL/767’ MSL.
Tree, pole, vent on building, stacks, and obstruction light on stack beginning 1672’ from DER, 55’ right of centerline, up to 120’ AGL/820’ MSL.
Trees beginning 1.9 NM from DER, 2938’ left of centerline, up to 100’ AGL/1020’ MSL.
- Rwy 14: Trees, obstruction light on DME antenna, and pole beginning 290’ from DER, 1’ right of centerline, up to 129’ AGL/819’ MSL.
Trees and pole beginning 1099’ from DER, 6’ left of centerline, up to 87’ AGL/777’ MSL.
- Rwy 27: Trees, light pole, and flagpole beginning 617’ from DER, 198’ left of centerline, up to 119’ AGL/829’ MSL.
Obstruction light on antenna, buildings, tower, and tree beginning 810’ from DER, 26’ right of centerline, up to 165’ AGL/955’ MSL.
Trees and building beginning 3885’ from DER, 120’ left of centerline, up to 84’ AGL/1014’ MSL.
Tower 1.7 NM from DER, 633’ left of centerline, up to 569’ AGL/1279’ MSL.
- Rwy 32: Vehicle on road, trees, railroad, poles, and navaid beginning 179’ from DER, 267’ right of centerline, up to 58’ AGL/758’ MSL.
Vehicle on road, railroad, and trees beginning 192’ from DER, up to 59’ AGL/759’ MSL.
Navaid 257’ from DER, on centerline, 26’ AGL/726 MSL.
Trees, poles, buildings, and tower beginning 3674’ from DER, 616’ right of centerline, up to 157’ AGL/973’ MSL.
Trees, buildings, tower, sign, and stack beginning 1924’ from DER, 378’ left of centerline, up to 143’ AGL/969’ MSL.

NC-1, 10 NOV 2016 to 08 DEC 2016

NC-1, 10 NOV 2016 to 08 DEC 2016