


Flight Procedure Tracking Form		Action: FLIGHT CHECK	Task Type: IAP	Date Open: 09/04/2015	Task #: 2015090430365501003	Request #: 20150904303655
Procedure: APPROACH LOC RWY 10 AMDT 8			Airport ID: KMAC	Airport: MACON DOWNTOWN		Reimbursable #: NO
City: MACON	ST: GA	GPS #:	Estimated Chart Date: 07/21/2016		FICO #:	
Fac ID: MAC		Fac. Type:			Specialist: ROBERT COOK	
Procedure Review						
	Rec'd	Rel'd	Full Name	Comments		
Lead:	01/25/2016					
QA:		3/10, 3/28	CLARK			
Liaison:						
Procedure Comments: ASSIGNED MAG VAR: KMAC: OLD W3 - NEW W6. I-MAC: OLD W3 - NEW W6. LOCALIZER AZMUTH OFFSET: 2.48 DEGREES.			ENROUTE-NON	Remark Type: INFORMATION		
						
CONTACT JULIE A. MORGAN, AJV-5411, 405-954-8568						

VN8200-6 (05/26/2005)

Data as of: 02/19/2016 08:34:32 AM

LOC/DME I-MAC 111.9 Chan 56	APP CRS 102°	Rwy Idg 4694 TDZE 430 Apt Elev 437
---	------------------------	---

OLD

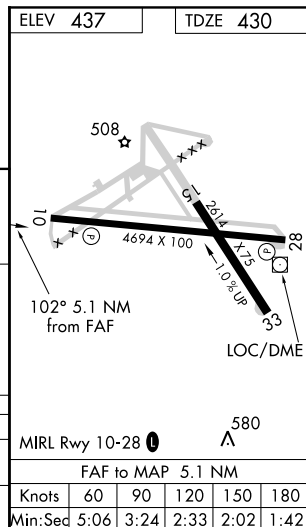
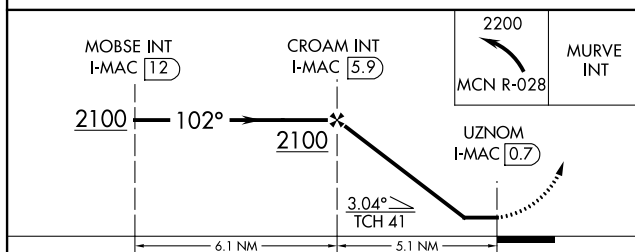
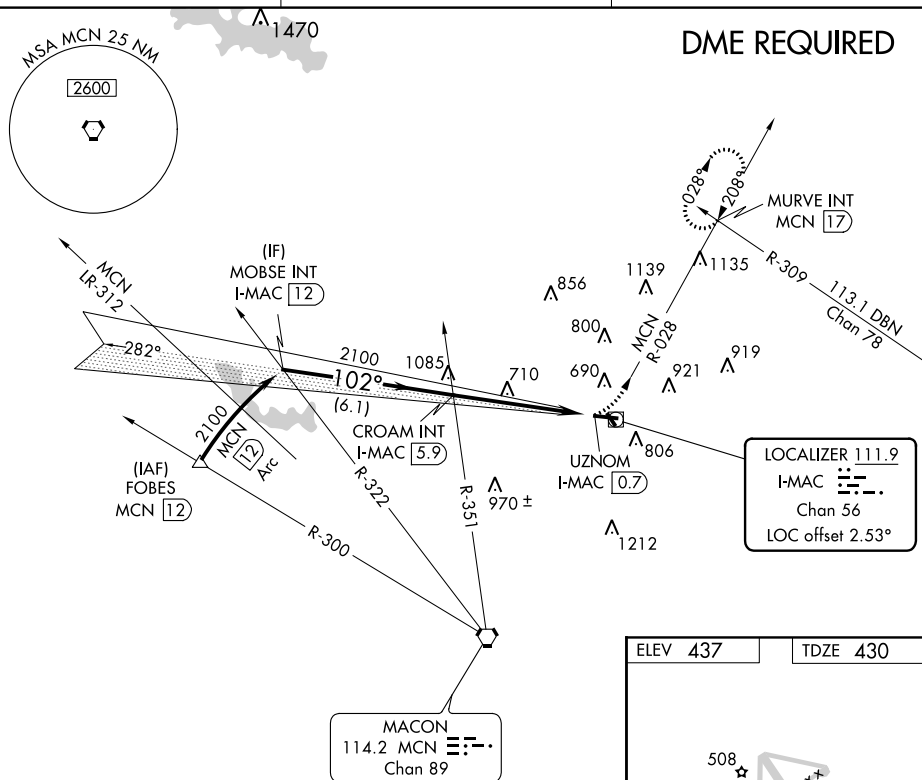
LOC RWY 10
MACON DOWNTOWN (MAC)

T Visibility reduction by helicopters NA. Use Middle Georgia Rgnl altimeter setting; when not received, use Robins AFB altimeter setting and increase all MDAs 20 feet. When VGSI inoperative procedure NA at night.

MISSED APPROACH: Climbing left turn to 2200 on MCN VORTAC R-028 to MURVE Int/MCN 17 DME and hold.

MIDDLE GEORGIA RGNL ASOS ★
120.775

ATLANTA APP CON ★
124.2 279.6

UNICOM
123.0 (CTAF) **L**

CATEGORY	A	B	C	D
S-10	1060-1	630 (700-1)	1060-1 $\frac{7}{8}$	630 (700-1 $\frac{7}{8}$)
CIRCLING	1200-1	763 (800-1)	1200-2 $\frac{1}{4}$ 763 (800-2 $\frac{1}{4}$)	1320-3 883 (900-3)

OLD

MACON, GEORGIA

AL-244 (FAA)

FIG

LOC/DME I-MAC 111.9 Chan 56	APP CRS 105°	Rwy Idg TDZE Apt Elev 4694 430 437
---	------------------------	--

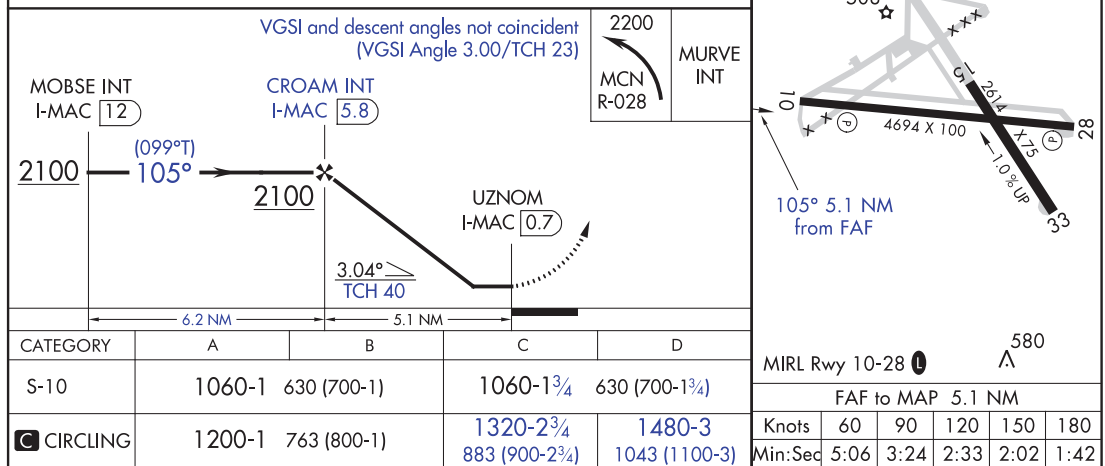
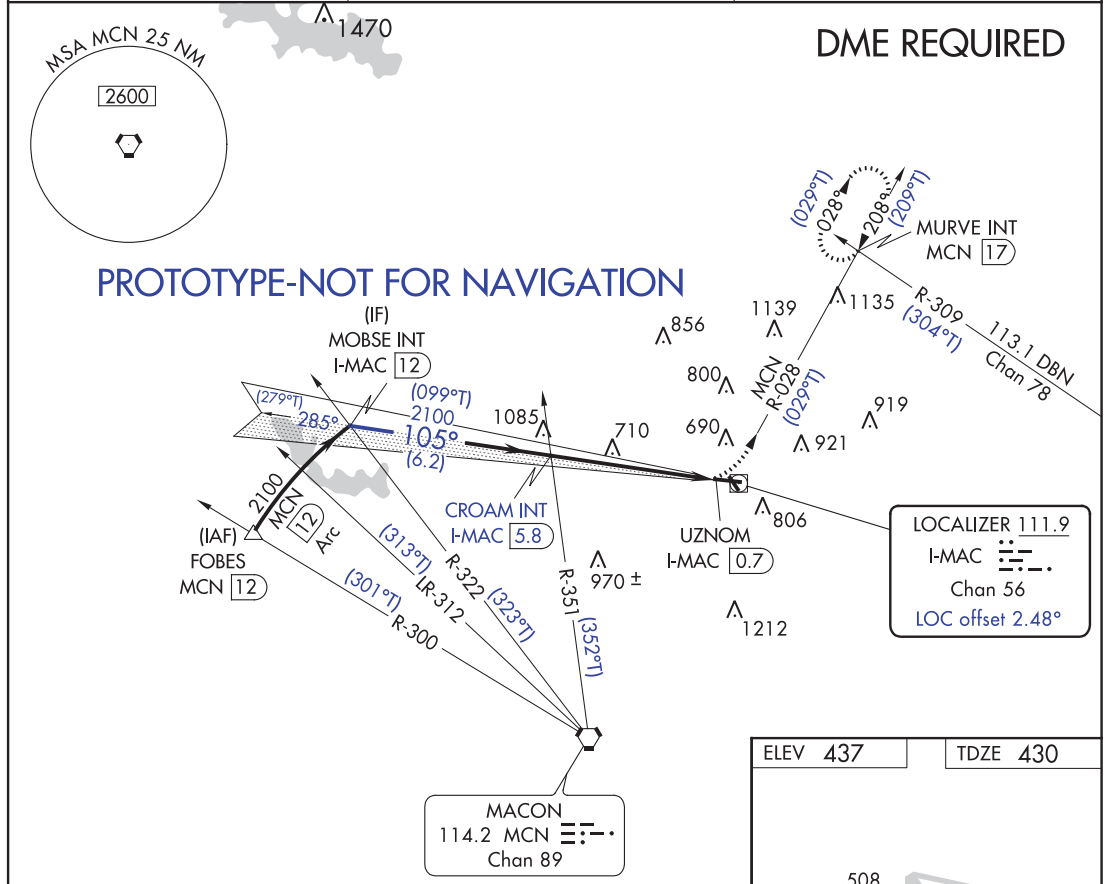
NEW

LOC RWY 10

MACON DOWNTOWN (MAC)

<p>NA Use Middle Georgia Rgnl altimeter setting; when not received, use Robins AFB altimeter setting and increase all MDA 20 feet. Night landing RWY 15-33 NA.</p>	<p>MISSED APPROACH: Climbing left turn to 2200 on MCN VORTAC R-028 to MURVE INT/MCN 17 DME and hold.</p>
---	--

MIDDLE GEORGIA RGNL ASOS ★ 120.775	ATLANTA APP CON ★ 124.2 279.6	UNICOM 123.0 (CTAF) 0
--	---	---------------------------------



MACON, GEORGIA
Amdt 8 FIG

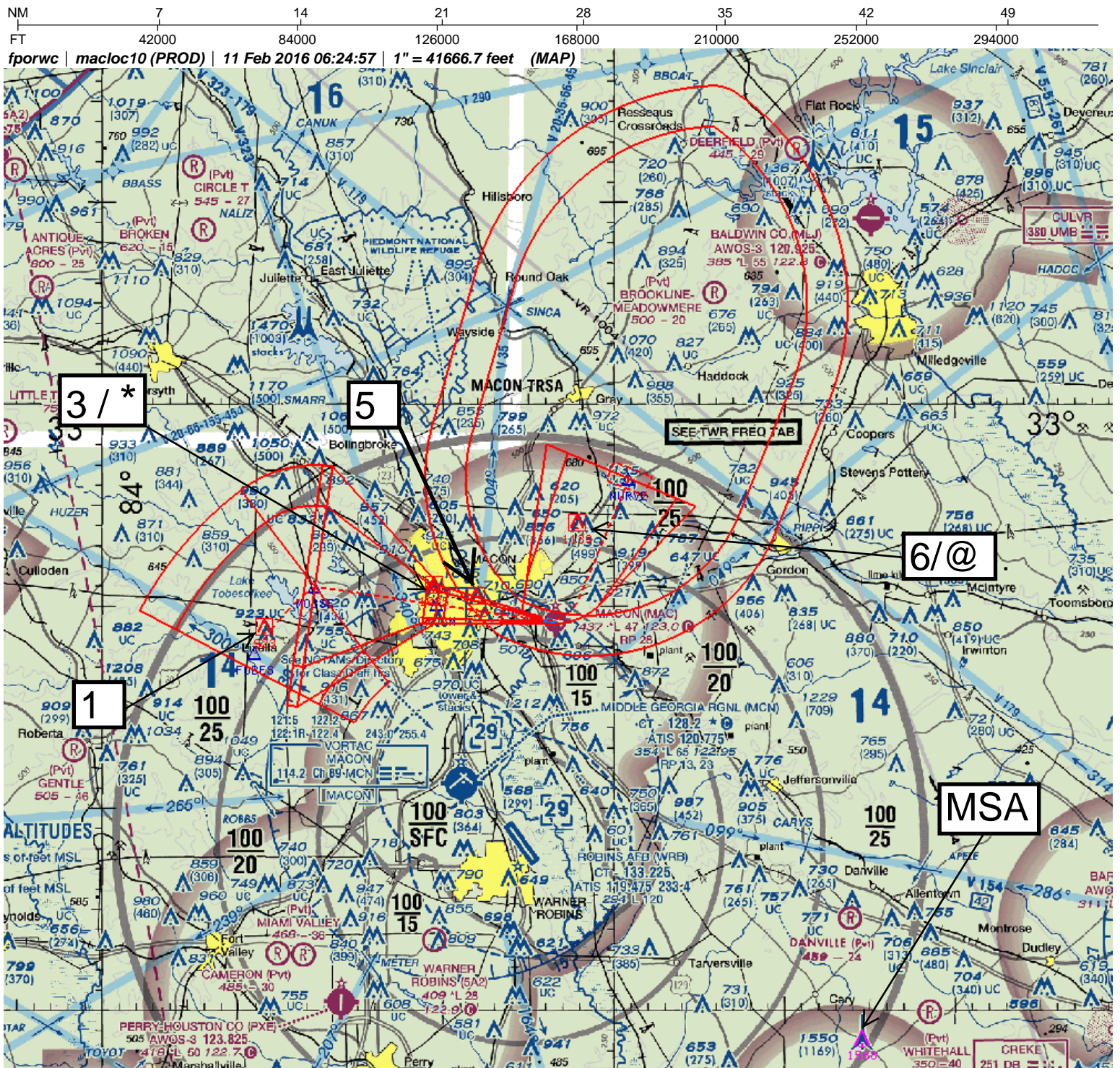
NEW

32°49'N-83°34'W

MACON DOWNTOWN (MAC)
LOC RWY 10

AUTOMATED AL-244 LOC RWY 10

SE-4
3-1-16
COMPILER: LS
REVIEWER:
DBL CHKR:
EFF: FIG



APT ID:	(KMAC)	FM 9	SEGMENT	OBST	ELEV
APT NAME:	MACON DOWNTOWN	REF #			
CITY:	MACON	1	FOBES 12 DME ARC	TOWER	923
STATE:	GA	3	MOBSE IMS	TOWER	1085
PCDR ID:	LOC RWY 10	*	PARA 289	TOWER	1085
AMDT #:	8	5	CROAM FINAL	TOWER	710
SCALE:	1:500,000	6	MA LVL SFC	TOWER	1139
		@	MA HOLD P-10	TOWER	1139
		MSA	MCN VTAC 25 NM	TOWER	1568

TERMINAL AIRSPACE DATA REQUIREMENTS

CITY: **MACON**

STATE: **GA**

AIRPORT NAME: **MACON DOWNTOWN**

ID: **KMAC**

PROCEDURE: **LOC RWY 10**

AMDT: **8**

DOCKET#: **NOT REQUIRED**

(96-AXX-X/Required/Not Required)

ALL DIST TO 1/100 NM; ELEV TO NEAREST FT; COORD TO 1/100 SEC; DEG TO 1/100 DG.

- | | | | |
|---|---|--|--|
| 1. Distance from | <u> * MAP </u> | to 1000' point | <u> 3.20 </u> |
| <small>(Enter THLD, FAF, ARP, FACILITY, as appropriate)</small> | | | |
| 2. Width of | <u> FINAL </u> | segment at 1000' point | <u> 0.91 </u> |
| <small>(Enter appropriate segment, final, intermediate, etc.)</small> | | | |
| 3. True Course of | <u> FINAL </u> | segment containing 1000' point | <u> 098.50 </u> |
| 4. High Terrain in | <u> FINAL </u> | segment containing 1000' point | <u> 520 </u> |
| 5. Distance from | <u> * MAP </u> | to 1500' point | <u> 5.00 </u> |
| <small>(If 1500' point in PT maneuvering area or holding pattern note in remarks)</small> | | | |
| 6. Width of | <u> FINAL </u> | segment at 1500' point | <u> 1.30 </u> |
| 7. True Course of | <u> FINAL </u> | segment containing 1500' point | <u> 098.50 </u> |
| 8. High Terrain in | <u> FINAL </u> | segment containing 1500' point | <u> 520 </u> |
| 9. Threshold Coordinates (if straight-in) ... | <u> 324922.44N / 0833412.47W </u> | | |
| 10. ARP Coordinates | <u> 324918.35N / 0833342.97W </u> | | |
| 11. Runway Approach End and distance furthest from ARP | RWY | <u> 10 </u> | |
| | Distance | <u> 0.46 </u> | NM |
| 12. FAF Coordinates..... | <u> 325006.24N / 0834011.92W </u> | | |

REMARKS: Approach/Drawing attached.

*** UZNOM I-MAC 0.70 DME, 324921.10N-0833412.71W.
LOCALIZER /AZMUTH OFFSET 2.48 DEGREES.**