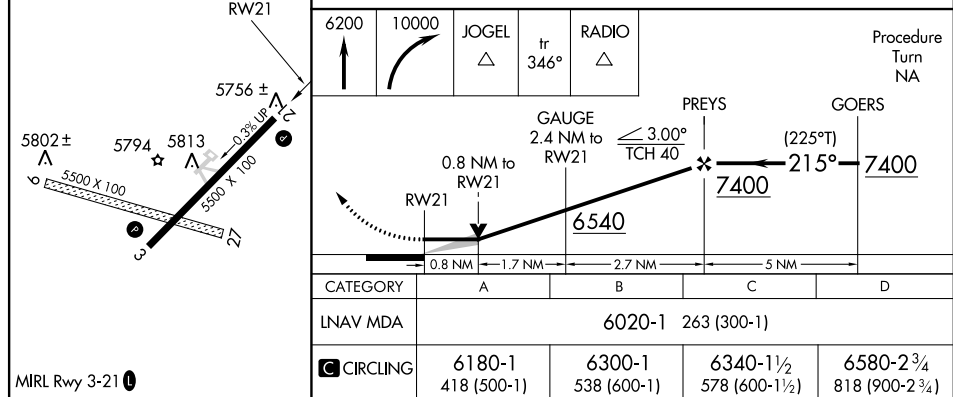


Flight Procedure Tracking Form		Action: FLIGHT CHECK	Task Type: IAP	Date Open: 10/19/2015	Task #: 2015082617253701002	Request #: 20150826172537
Procedure: RNAV (GPS) RWY 21 ORIG			Airport ID: KTAD	Airport: PERRY STOKES		Reimbursable #: NO
City: TRINIDAD	ST: CO	GPS #:	Estimated Chart Date: 09/15/2016		FICO #: 1169268	
Fac ID: N/A		Fac. Type:			Specialist: SYLVAN DRAKES	
Procedure Review						
	Rec'd	Rel'd	Full Name	Comments		
Lead:	12/03/2015	06/13/2016	BEV L BORDY	QUALITY		
QA:	06/13/2016	06/22/2016	BEV L BORDY	4 7/29CTabaka		
Liaison:	06/22/2016	06/23/2016	MARY MCDONALD	CHECKED		
Procedure Comments:			ENROUTE-NON			
			Remark Type: INFORMATION			
TAD NDB BEING DECOMMISSIONED, NDB-A BEING CANCELLED AND A NEW RNAV (GPS) RWY 21 ORIG DEVELOPED.						
CONTACT: BEVERLY BORDY AJV-543 LEADS, 405-954-8293.						
07/28/16: THIS IS A CORRECTED COPY OF THE FORM APPROVED ON 7/18/16.						
1. ADDITIONAL FLIGHT DATA: CORRECTED PRAYS TO RW21: 3.00/40 "TO" PREYS TO RW21: 3.00/40.						

FIG

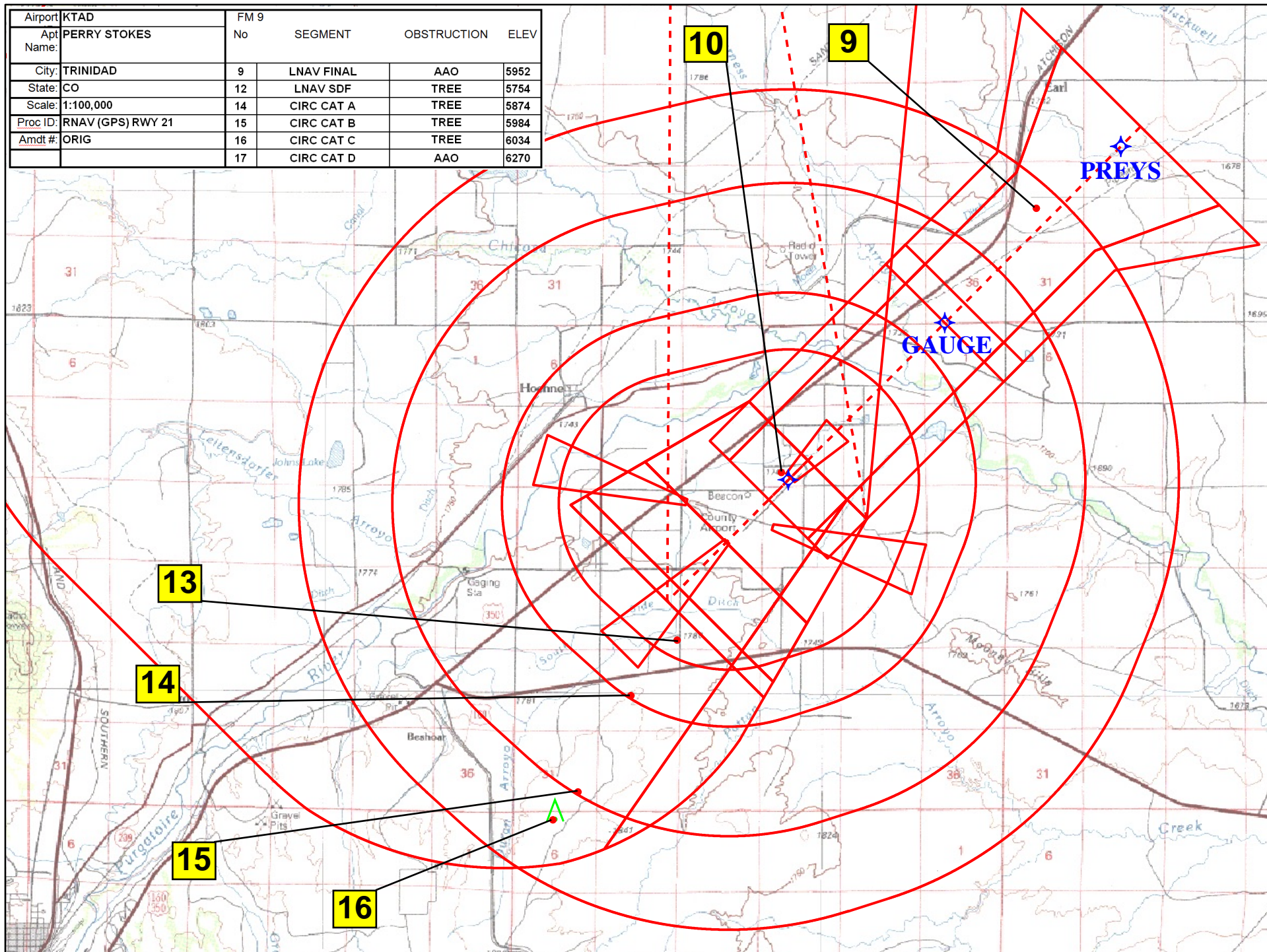
RNAV (GPS) RWY 21
PERRY STOKES (TAD)

ASOS 119.025	DENVER CENTER 128.375 379.95	mile, mile	UNICOM 122.8 (CTAF) 0
------------------------	--	---------------	--



PERRY STOKES (TAD)
RNAV (GPS) RWY 21

Airport	KTAD	FM 9			
Apt Name:	PERRY STOKES	No	SEGMENT	OBSTRUCTION	ELEV
City:	TRINIDAD	9	LNAV FINAL	AAO	5952
State:	CO	12	LNAV SDF	TREE	5754
Scale:	1:100,000	14	CIRC CAT A	TREE	5874
Proc ID:	RNAV (GPS) RWY 21	15	CIRC CAT B	TREE	5984
Amdt #:	ORIG	16	CIRC CAT C	TREE	6034
		17	CIRC CAT D	AAO	6270



Airport	KTAD	FM 9			
Apt Name:	PERRY STOKES	No	SEGMENT	OBSTRUCTION	ELEV
City:	TRINIDAD	1	INITIAL RADIO	AAO	6212
State:	CO	3	INITIAL RADIO SDF	TOWER	6021
Scale:	1:500,000	5	INITIAL BLOOM	TOWER	6162
Proc ID:	RNAV (GPS) RWY 21	7	INTERMEDIATE	TOWER	5976
Amdt #:	ORIG	9	LNAV FINAL	AAO	5952
		10	LNAV SDF	TREE	5754
		11	MA LVL SFC	AAO	6659
		@	MA HOLD	TOWER	6924

TERMINAL AIRSPACE DATA REQUIREMENTS

CITY:

STATE:

AIRPORT NAME:

ID:

PROCEDURE:

AMDT:

DOCKET # :

(96-AXX-X/Required/Not Required)

ALL DIST TO 1/100 NM; ELEV TO NEAREST FT; COORD TO 1/100 SEC; DEG TO 1/100 DG.

1. Distance from _____ to 1000' point _____

(Enter THLD, FAF, ARP, FACILITY, as appropriate)

2. Width of _____ segment at 1000' point _____

(Enter appropriate segment , final, intermediate, etc.)

3. True Course of _____ segment containing 1000' point _____

4. High Terrain in _____ segment containing 1000' point _____

5. Distance from _____ to 1500' point _____

(If 1500' point in PT maneuvering area or holding pattern note in remarks)

6. Width of _____ segment at 1500' point _____

7. True Course of _____ segment containing 1500' point _____

8. High Terrain in _____ segment containing 1500' point _____

9. Threshold Coordinates (if straight-in) ... _____ / _____

10. ARP Coordinates _____ / _____

11. Runway Approach End and distance furthest from ARP.....RWY _____

Distance _____ NM

12. FAF Coordinates _____ / _____

(Click to Select)

REMARKS: