

Flight Procedure Tracking Form		Action: FLIGHT CHECK	Task Type: STAR	Date Open: 08/25/2015	Task #: 2015082535127602001	Request #: 20150825351276
Procedure: STAR REDDN (RNAV) FOUR DALLAS TX KDAL			Airport ID: KDAL	Airport: DALLAS LOVE FIELD	Reimbursable #: NO	
City: DALLAS	ST: TX	GPS #:	Estimated Chart Date: 05/26/2016		FICO #:	
Fac ID: N/A		Fac. Type:			Specialist: JEFF ANDERSON	
Procedure Review						
	Rec'd	Rel'd	Full Name	Comments		
Lead:	10/14/2015					
QA:						
Liaison:						
Procedure Comments:				Remark Type: INFORMATION		
CONTACT: JACOB POWERS 405-954-8702						



REDDN FOUR ARRIVAL (RNAV)
(REDDN.REDDN4) FIG

DALLAS-LOVE FIELD (DAL)
DALLAS, TEXAS

ATIS
120.15
REGIONAL APP CON
125.27 308.4
125.025 263.025

ARRIVAL ROUTE DESCRIPTION

CHEVE TRANSITION (CHEVE.REDDN4)

FELIZ TRANSITION (FELIZ.REDDN4):

(ATC assigned only).

HEERE TRANSITION (HEERE.REDDN4):

(ATC assigned only).

JIGAM TRANSITION (JIGAM.REDDN4):

(ATC assigned only).

MAJKK TRANSITION (MAJKK.REDDN4)

NAVYS TRANSITION (NAVYS.REDDN4):

(For KCLL departures only).

PNUTS TRANSITION (PNUTS.REDDN4)

PUDJE TRANSITION (PUDJE.REDDN4)

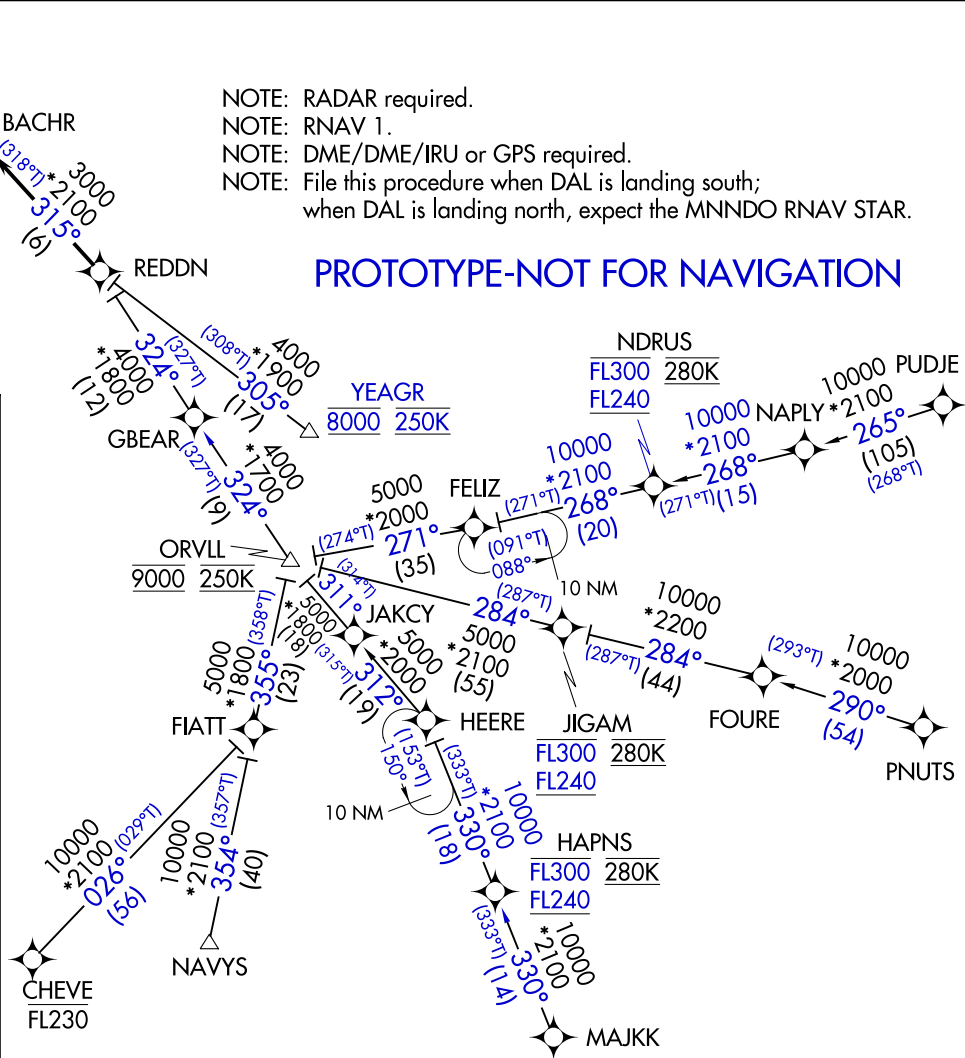
YEAGR TRANSITION (YEAGR.REDDN4):

(ATC assigned only).

From REDDN on track 315° to BACHR, then on track 315°. Expect RADAR vectors to final approach course.

NOTE: RADAR required.
NOTE: RNAV 1.
NOTE: DME/DME/IRU or GPS required.
NOTE: File this procedure when DAL is landing south;
when DAL is landing north, expect the MNND0 RNAV STAR.

PROTOTYPE-NOT FOR NAVIGATION



(REDDN.REDDN4) FIG
REDDN FOUR ARRIVAL (RNAV)

ST-106 (FAA)

DALLAS-LOVE FIELD (DAL)
DALLAS, TEXAS

AUTOMATED ST-106 REDDN ARRIVAL

SC-2
JAN 27, 2016
COMPILER: LS
REVIEWER:
DBL CHKR:
EFF: FIG

ATIS
120.15
REGIONAL APP CON
125.27 308.4
125.025 263.025

PROTOTYPE-
NOT FOR NAVIGATION

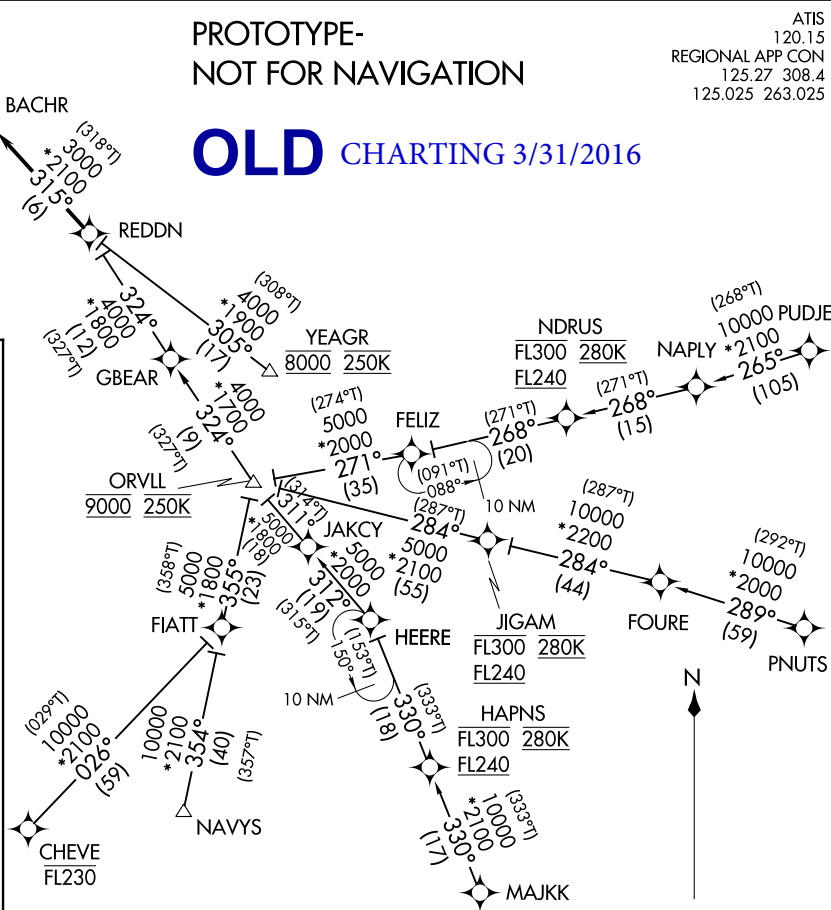
OLD CHARTING 3/31/2016

NOTE: RADAR required.
NOTE: RNAV 1.
NOTE: DME/DME/IRU or GPS required.
NOTE: File this procedure when DAL is landing south; when DAL is landing north, expect the MNND0 RNAV STAR.

ARRIVAL ROUTE DESCRIPTION

CHEVE TRANSITION (CHEVE.REDDN3)
FELIZ TRANSITION (FELIZ.REDDN3):
(ATC assigned only).
HEERE TRANSITION (HEERE.REDDN3):
(ATC assigned only).
JIGAM TRANSITION (JIGAM.REDDN3):
(ATC assigned only).
MAJJK TRANSITION (MAJJK.REDDN3)
NAVYS TRANSITION (NAVYS.REDDN3):
(For KCLL departures only).
PNUTS TRANSITION (PNUTS.REDDN3)
PUDJE TRANSITION (PUDJE.REDDN3)
YEAGR TRANSITION (YEAGR.REDDN3):
(ATC assigned only).

From REDDN on track 315° to BACHR, then on track 315°. Expect RADAR vectors to final approach course.



US DEPARTMENT of TRANSPORTATION - FEDERAL AVIATION ADMINISTRATION
STANDARD TERMINAL ARRIVAL (STAR)

Bearings, headings, courses, tracks and radials are magnetic. Elevations and altitudes are in feet. MSL. Altitudes are minimum altitudes unless otherwise indicated.
Distances are in nautical miles (NM). Graphic depiction attached.

Arrival Name	Number	STAR Computer Code	Superseded Number	Dated	Effective Date
REDDN RNAV	FOUR	REDDN.REDDN4	THREE	31 MAR 2016	
Graphic Depiction 2					

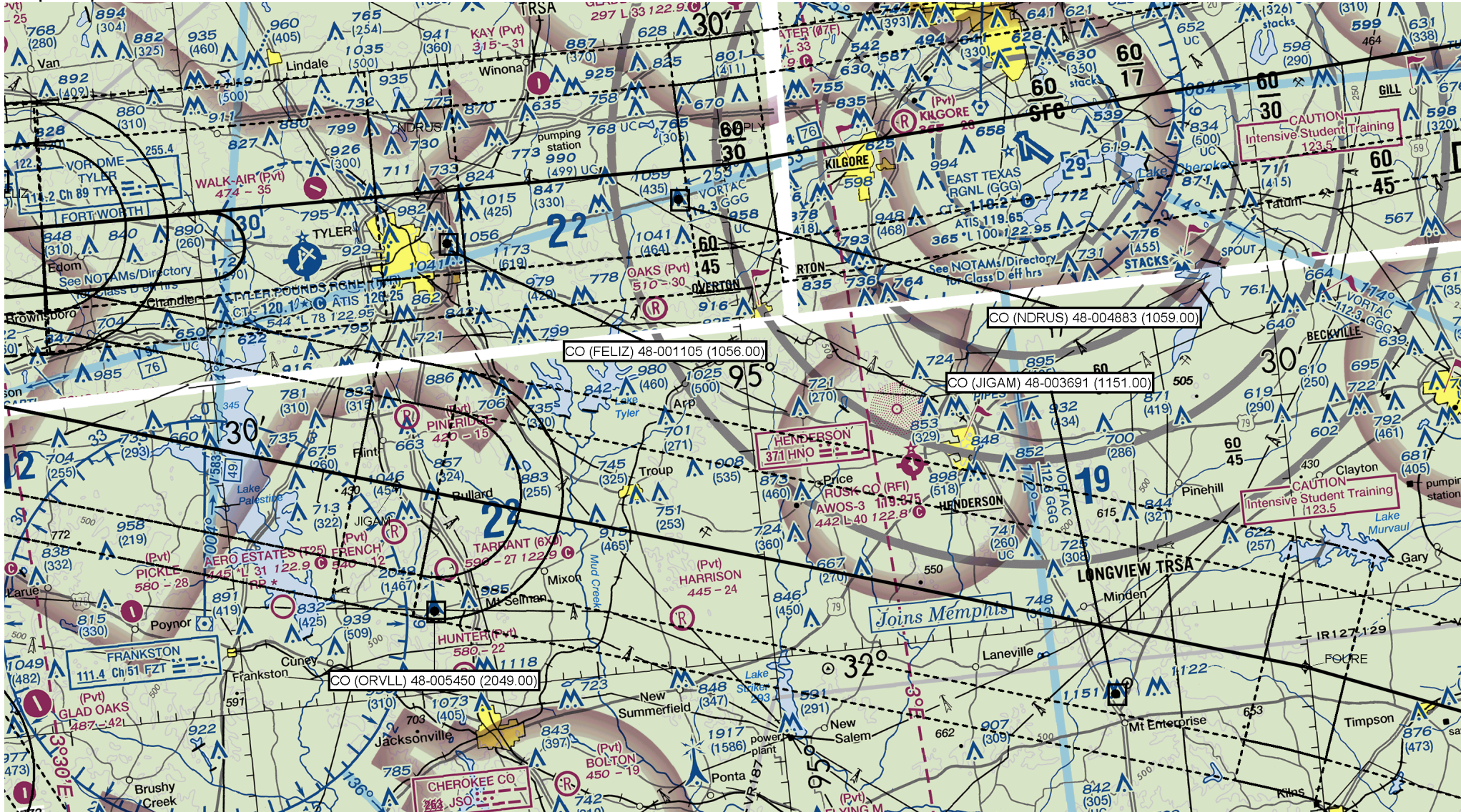


US DEPARTMENT of TRANSPORTATION - FEDERAL AVIATION ADMINISTRATION
STANDARD TERMINAL ARRIVAL (STAR)

Bearings, headings, courses, tracks and radials are magnetic. Elevations and altitudes are in feet. MSL. Altitudes are minimum altitudes unless otherwise indicated.
Distances are in nautical miles (NM). Graphic depiction attached.

Arrival Name	Number	STAR Computer Code	Superseded Number	Dated	Effective Date
REDDN RNAV	FOUR	REDDN.REDDN4	THREE	31 MAR 2016	

Graphic Depiction 3

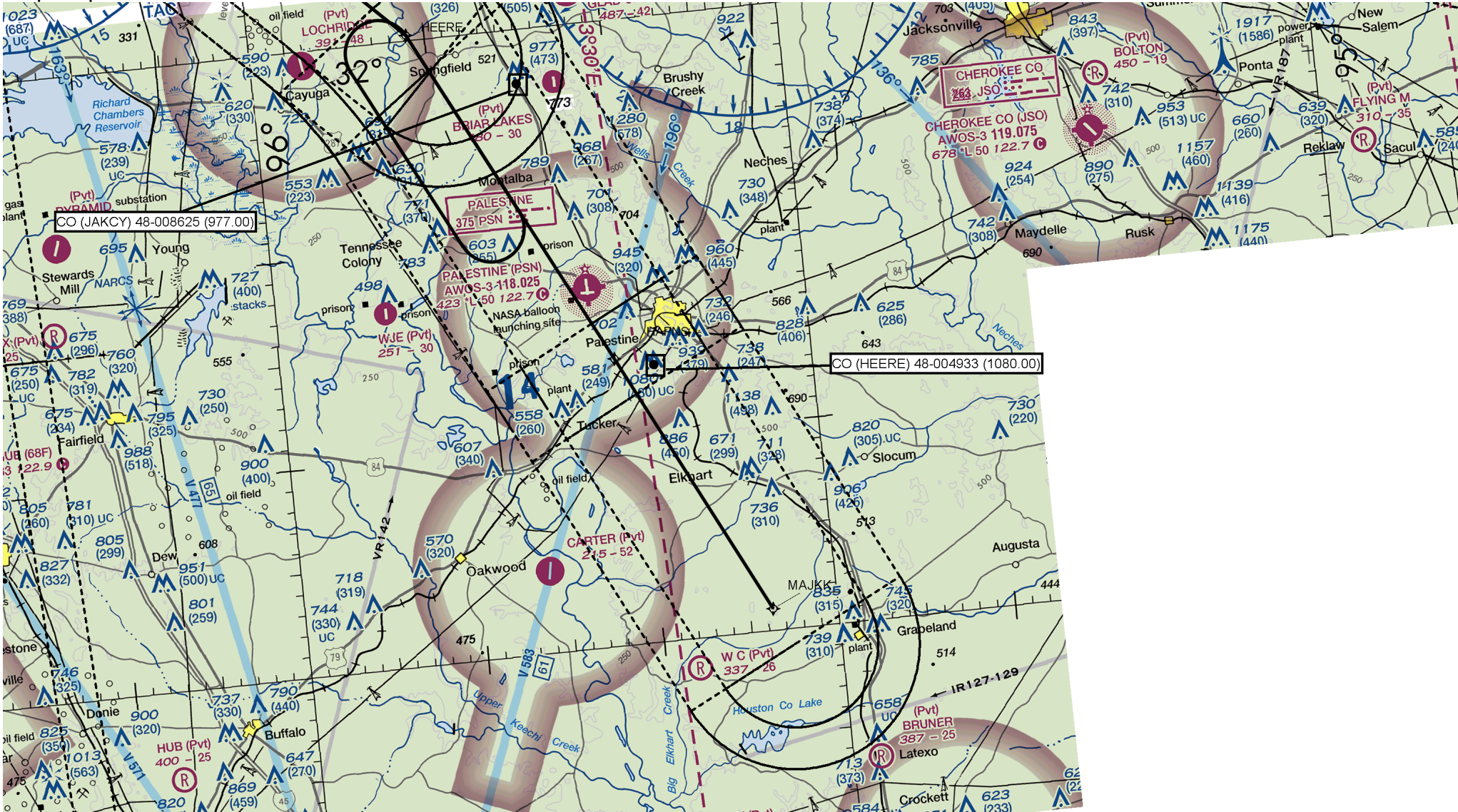


US DEPARTMENT of TRANSPORTATION - FEDERAL AVIATION ADMINISTRATION
STANDARD TERMINAL ARRIVAL (STAR)

Bearings, headings, courses, tracks and radials are magnetic. Elevations and altitudes are in feet. MSL. Altitudes are minimum altitudes unless otherwise indicated.
Distances are in nautical miles (NM). Graphic depiction attached.

Arrival Name	Number	STAR Computer Code	Superseded Number	Dated	Effective Date
REDDN RNAV	FOUR	REDDN.REDDN4	THREE	31 MAR 2016	

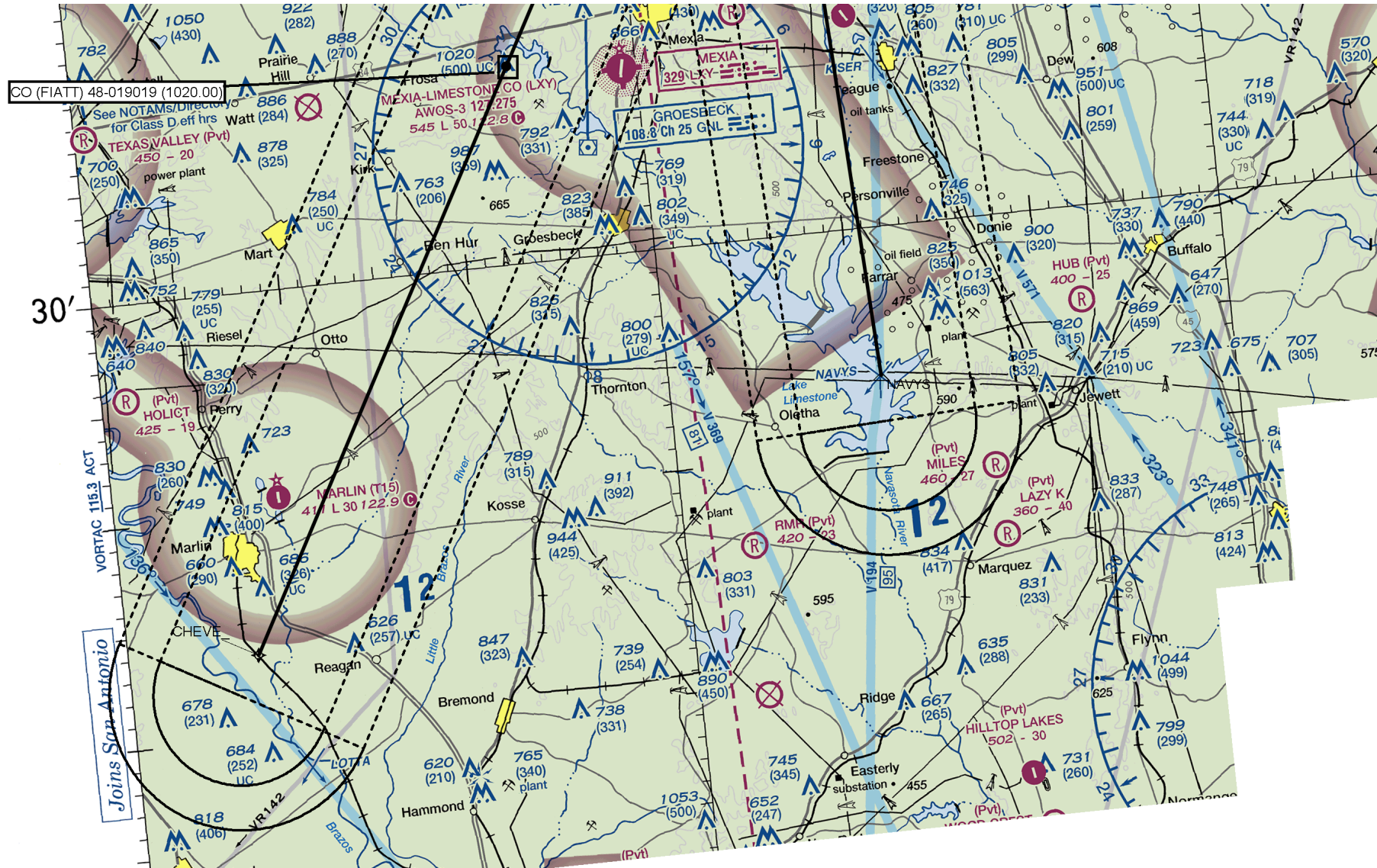
Graphic Depiction 4



US DEPARTMENT of TRANSPORTATION - FEDERAL AVIATION ADMINISTRATION
STANDARD TERMINAL ARRIVAL (STAR)

Bearings, headings, courses, tracks and radials are magnetic. Elevations and altitudes are in feet. MSL. Altitudes are minimum altitudes unless otherwise indicated.
Distances are in nautical miles (NM). Graphic depiction attached.

Arrival Name	Number	STAR Computer Code	Superseded Number	Dated	Effective Date
REDDN RNAV	FOUR	REDDN.REDDN4	THREE	31 MAR 2016	
Graphic Depiction 5					

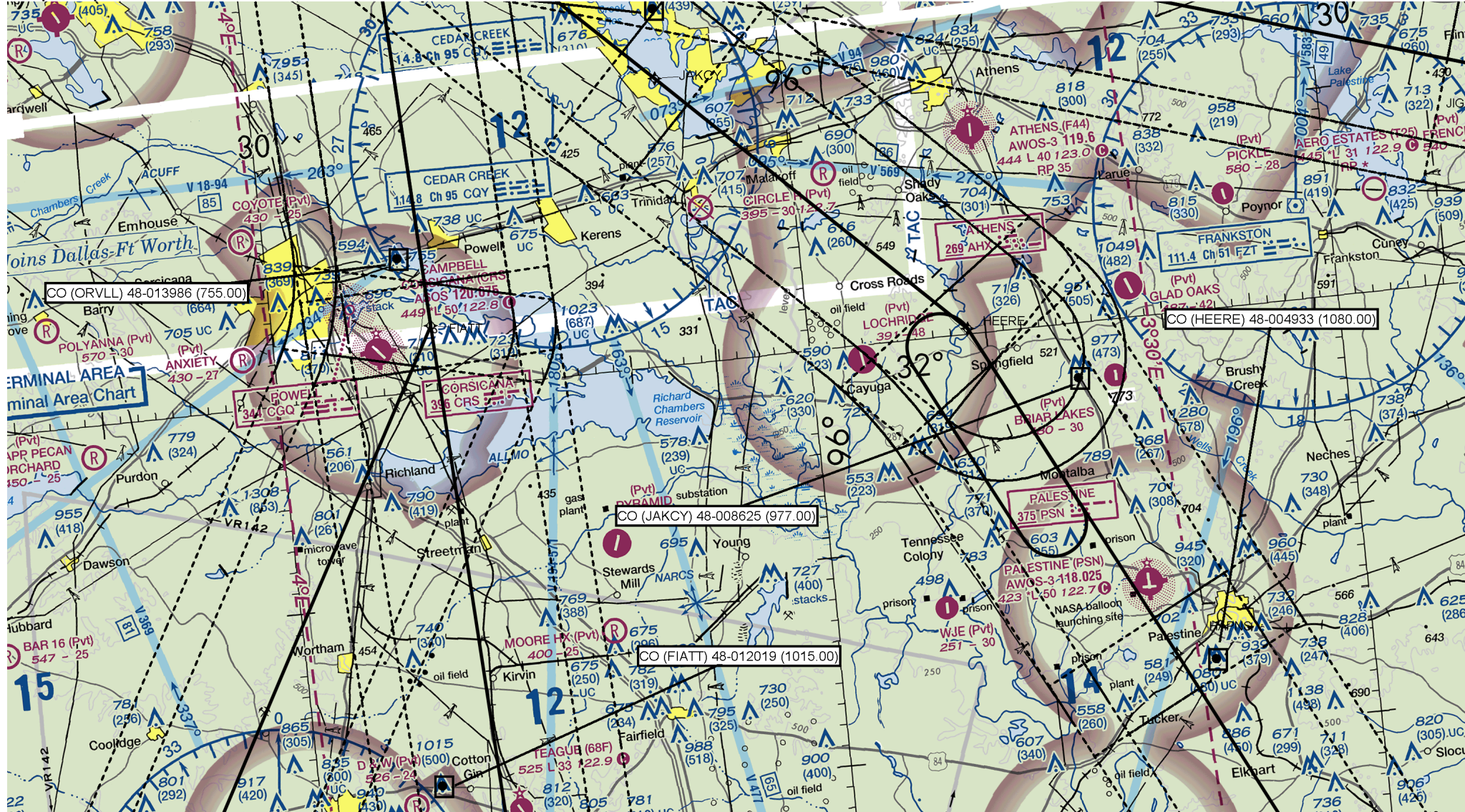


US DEPARTMENT of TRANSPORTATION - FEDERAL AVIATION ADMINISTRATION
STANDARD TERMINAL ARRIVAL (STAR)

Bearings, headings, courses, tracks and radials are magnetic. Elevations and altitudes are in feet. MSL. Altitudes are minimum altitudes unless otherwise indicated.
Distances are in nautical miles (NM). Graphic depiction attached.

Arrival Name	Number	STAR Computer Code	Superseded Number	Dated	Effective Date
REDDN RNAV	FOUR	REDDN.REDDN4	THREE	31 MAR 2016	

Graphic Depiction 6



US DEPARTMENT of TRANSPORTATION - FEDERAL AVIATION ADMINISTRATION
STANDARD TERMINAL ARRIVAL (STAR)

Bearings, headings, courses, tracks and radials are magnetic. Elevations and altitudes are in feet. MSL. Altitudes are minimum altitudes unless otherwise indicated.
Distances are in nautical miles (NM). Graphic depiction attached.

Arrival Name	Number	STAR Computer Code	Superseded Number	Dated	Effective Date
REDDN RNAV	FOUR	REDDN.REDDN4	THREE	31 MAR 2016	

Graphic Depiction 7



US DEPARTMENT of TRANSPORTATION - FEDERAL AVIATION ADMINISTRATION
STANDARD TERMINAL ARRIVAL (STAR)

Bearings, headings, courses, tracks and radials are magnetic. Elevations and altitudes are in feet. MSL. Altitudes are minimum altitudes unless otherwise indicated.

Distances are in nautical miles (NM). Graphic depiction attached.

Arrival Name	Number	STAR Computer Code	Superseded Number	Dated	Effective Date
REDDN RNAV	FOUR	REDDN.REDDN4	THREE	31 MAR 2016	

Graphic Depiction 8

