

Flight Procedure Tracking Form		Action: FLIGHT CHECK	Task Type: IAP	Date Open: 08/21/2015	Task #: 2015082126054901002	Request #: 20150821260549
Procedure: APPROACH RNAV (GPS) RWY 5 ORIG-A			Airport ID: KW40	Airport: MOUNT OLIVE MUNI		Reimbursable #: NO
City: MOUNT OLIVE	ST: NC	GPS #:	Estimated Chart Date: 10/13/2016		FICO #:	
Fac ID: N/A		Fac. Type:			Specialist: GEORGE TRAMMELL	
Procedure Review						
	Rec'd	Rel'd	Full Name	Comments		
Lead:	07/14/2016					
QA:						
Liaison:						
Procedure Comments:			ENROUTE-NON	Remark Type: INFORMATION		
P NOTAM FOR RESTORATION OF NIGHT MINIMUMS PRIMARY CONTACT: ADOLFO D URRUTIA 405-954-2079 <i>REQUEST TABLE TOP</i>						

[Print](#)

Project Name: W40 NIGHT RESTORATION FOR RNAV GPS RWY 5

Project Reason: 20:1 PENETRATIONS REMOVED PER FPT. CHANGES: 1. DELETED NOTE: PROCEDURE NA AT NIGHT. 2. UPDATED HELICOPTER VISIBILITY REDUCTION NOTE TO 3/4 SM. REASONS: 1. 20:1 PENETRATIONS REMOVED PER FPT. 2. 20:1 PENETRATIONS REMOVED AND 34:1 PENETRATIONS REMAIN. IAW 8260.19G PARA 8-6-5.I.(3).

Last Updated By: George Trammell



Last Updated At: 2016-08-04 18:43:42.439508

Status: Verified

60392

IFDC ~~XXXXX~~ W40 IAP MOUNT OLIVE MUNI, MOUNT OLIVE, NC. RNAV (GPS) RWY 5, ORIG... DELETE NOTE: PROCEDURE NA AT NIGHT. CHANGE HELICOPTER VISIBILITY REDUCTION NOTE TO READ: RWY 5 HELICOPTER VISIBILITY REDUCTION BELOW 3/4 SM NOT AUTHORIZED. THIS IS RNAV (GPS) RWY 5, ORIG-A. 1608041843-PERM



WAAS CH 69431 W05A	APP CRS 049°	Rwy Idg THRE 166 Apt Elev 166
--	------------------------	---

RNAV (GPS) RWY 5 MOUNT OLIVE MUNI (W40)



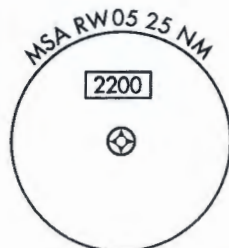
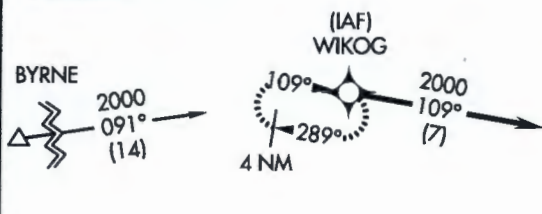
DME/DME RNP-0.3 NA. Helicopter visibility reduction below 15M not authorized.
 Procedure NA at night. Obtain Seymour-Johnson AFB altimeter setting on CTAF;
 when not received, use Duplin Co altimeter setting and increase LPV DA to 634
 and all MDA 20 feet.

MISSED APPROACH: Climb to 900 then climbing right turn to 2000 direct WIKOG and hold.

SEYMOUR JOHNSON APP CON *
119.7 273.6

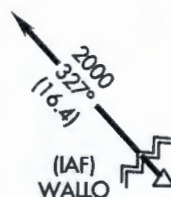
UNICOM
122.8 (CTAF)

Procedure NA for arrivals
 at BYRNE on V54-157
 westbound.



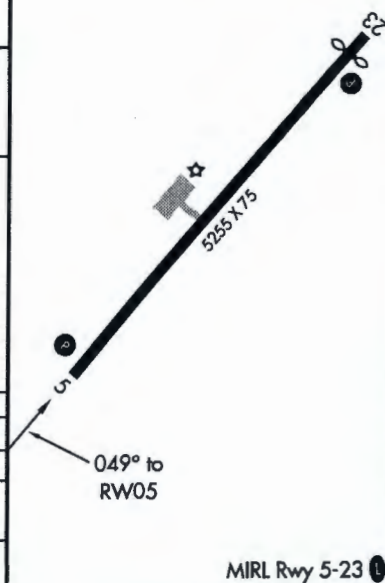
△748

Procedure NA for arrivals at
 WALLO on V213 southbound,
 V1 southwest bound, and V56
 eastbound.



ELEV 166 THRE 166

	900	2000	WIKOG
	↑	↻	✧
YATUV	2000	049°	1800
			BORRG
			1800
			CEGAV
			2.3 NM to RW05
			RW05
GS 3.45°			
TCH 60			
	6.5 NM	2 NM	2.3 NM
CATEGORY	A	B	C
LPV DA	625-1 ³ / ₈	459 (500-1 ³ / ₈)	NA
LNAV MDA	640-1	474 (500-1)	640-1 ³ / ₈
			474 (500-1 ³ / ₈)
CIRCLING	700-1	534 (600-1)	700-1 ¹ / ₂
			534 (600-1 ¹ / ₂)



MIRL Rwy 5-23