

<b>Flight Procedure Tracking Form</b>		<b>Action:</b> FLIGHT CHECK	<b>Task Type:</b> IAP	<b>Date Open:</b> 08/19/2015	<b>Task #:</b> 2015081837007401008	<b>Request #:</b> 20150818370074
<b>Procedure:</b> APPROACH RNAV (GPS) RWY 2 AMDT 1A			<b>Airport ID:</b> KTKX	<b>Airport:</b> KENNETT MEMORIAL		<b>Reimbursable #:</b> NO
<b>City:</b> KENNETT	<b>ST:</b> MO	<b>GPS #:</b>	<b>Estimated Chart Date:</b> 04/28/2016		<b>FICO #:</b>	
<b>Fac ID:</b> N/A		<b>Fac. Type:</b>			<b>Specialist:</b> DAN CAIRNS	
<b>Procedure Review</b>						
	<b>Rec'd</b>	<b>Rel'd</b>	<b>Full Name</b>	<b>Comments</b>		
<b>Lead:</b>	08/19/2015					
<b>QA:</b>						
<b>Liaison:</b>						
<b>Procedure Comments:</b>				<b>Remark Type:</b> INFORMATION		
P NOTAM  CONTACT: JACOB POWERS/PETE GETZ, AJV-5423 LEADS, 405.954.8702/4919						

[Print](#)

Project Name: KTKX, MO RNAV (GPS) RWY 2 CHANGES

Project Reason: KTKX, MO BACK-UP ALTIMETER NOTE CHANGE. REMOVED THRE. CHARTED TDZE. RAISED LPV AND LNAV/VNAV DA; LOWERED LNAV HAT BASED ON TDZE

Last Updated By: Daniel Cairns

Last Updated At: 2015-12-21 20:42:41.418438

Status: Verified

6/5266

!FDC X/XXXX TKX IAP KENNETT MEMORIAL, KENNETT, MO. RNAV (GPS) RWY 2, AMDT 1... DELETE THRE 259. CHART TDZE 262. LPV DA 512 ALL CATS, LNAV/VNAV DA 538 ALL CATS, LNAV HAT 358 ALL CATS. CHANGE ALTIMETER SETTING NOTE TO READ: WHEN LOCAL ALTIMETER SETTING NOT RECEIVED, USE BLYTHEVILLE ALTIMETER SETTING AND INCREASE ALL DA 47 FEET AND ALL MDA 60 FEET; INCREASE LNAV/VNAV VISIBILITY ALL CATS AND LNAV CATS C/D VISIBILITY 1/8 MILE; INCREASE CIRCLING CAT D VISIBILITY 1/4 MILE. THIS IS RNAV (GPS) RWY 2, AMDT 1A. 1512212042-PERM



KENNETT, MISSOURI

AL-5835 (FAA)

15344

WAAS CH <b>93735</b> <b>W02A</b>	APP CRS <b>018°</b>	Rwy Idg THRE Apt Elev	<b>5000</b> <b>259</b> <b>262</b>
--	------------------------	-----------------------------	---

**RNAV (GPS) RWY 2**

KENNETT MEMORIAL (TKX)

**NA** Circling to Rwy 18/36 NA at night. For uncompensated Baro-VNAV systems, LNAV/VNAV NA below -16°C (4°F) or above 54°C (130°F). Circling NA west of Rwy 2 and 18. DME/DME RNP-0.3 NA. Obtain local altimeter setting on CTAF; when not received, use Blytheville Muni altimeter setting; increase all DA 47 feet and all MDA 60 feet; increase LNAV/VNAV visibility all Cats ½ mile, LNAV Cat C and D visibility ½ mile, and Circling Cat D visibility ½ mile. Helicopter visibility reduction below 1 SM NA. Rwy 2 Straight-in and Circling minimums NA at night.

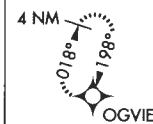
**MISSED APPROACH:**  
Climb to 2500 direct  
OGVIE and hold.

AWOS-3PT  
**119.05**

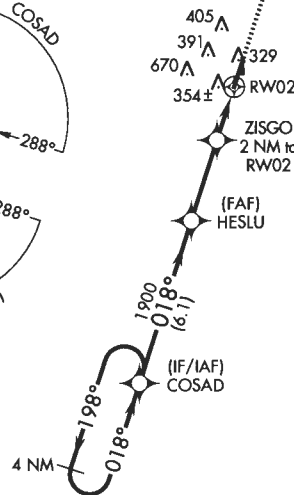
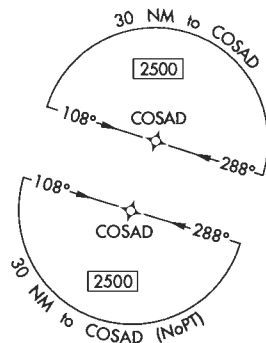
MEMPHIS CENTER  
**120.075 289.4**

UNICOM  
**122.8 (CTAF)**

MISSED APCH FIX

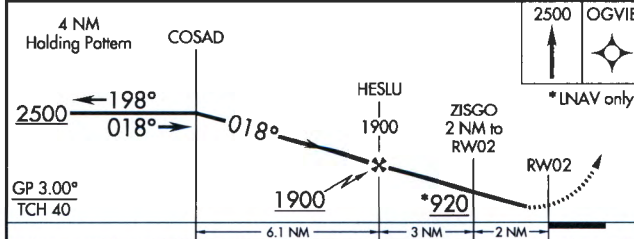


A862



NC-3, 10 DEC 2015 to 07 JAN 2016

NC-3, 10 DEC 2015 to 07 JAN 2016

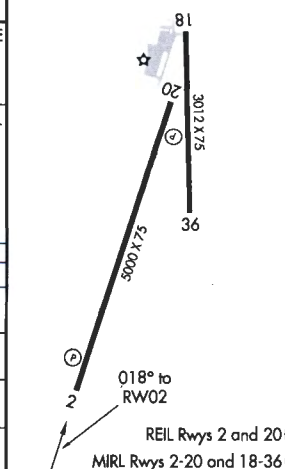


GP 3.00°  
TCH 40

CATEGORY	A	B	C	D
LPV DA		509-1	250 (300-1)	
LNAV/VNAV DA		535-1	276 (300-1)	
LNAV MDA		620-1	361 (400-1)	
<b>CIRCLING</b>	660-1 398 (400-1)	720-1 458 (500-1)	720-1½ 458 (500-1½)	900-2 638 (700-2)

ELEV 262

THRE 259



REIL Rwy 2 and 20  
MIRL Rwy 2-20 and 18-36

KENNETT, MISSOURI  
Amdt 1 06MAR14

36°14'N-90°02'W

KENNETT MEMORIAL (TKX)  
**RNAV (GPS) RWY 2**