

Flight Procedure Tracking Form		Action: FLIGHT CHECK	Task Type: IAP	Date Open: 09/12/2016	Task #: 2015081030433101005	Request #: 20150810304331
Procedure: RNAV (GPS) RWY 35 AMDT 1A			Airport ID: KBWD	Airport: BROWNWOOD RGNL		Reimbursable #: NO
City: BROWNWOOD	ST: TX	GPS #:	Estimated Chart Date: 07/19/2018		FICO #:	
Fac ID: N/A		Fac. Type:		Specialist: MIKE MELSEN		
Procedure Review						
	Rec'd	Rel'd	Full Name	Comments		
Lead:	08/17/2015	03/13/2018	ALLAN WILL	<div>QUALITY</div> <div>10</div> <div>CHECKED</div>		
QA:	03/13/2018					
Liaison:						
Procedure Comments: ENROUTE-NON Remark Type: INFORMATION ABBREVIATED AMENDMENT - UPDATE MAG VAR, CANCEL T-NOTAM. ASSIGNED MAG/VAR: KBWD: OLD 8E - NEW 4E PENDING DATA USED FOR KBWD AIRPORT AND RUNWAYS. CONTACT : ALLAN WILL; AJV-5410 LEAD; 405.954.6103. NOTE: QC REQUESTS A RE-EVALUATION OF THE VGSI. THERE IS A T-NOTAM ISSUED THAT THE VGSI AND RNAV GLIDEPATH ARE NOT COINCIDENT BUT PER AIRNAV ARE COINCIDENT.						

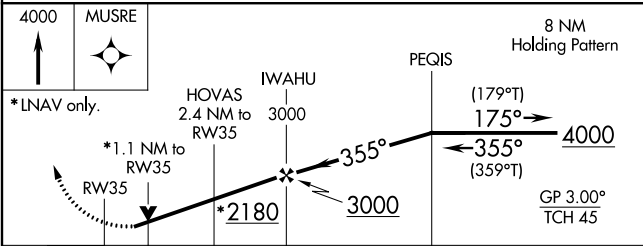
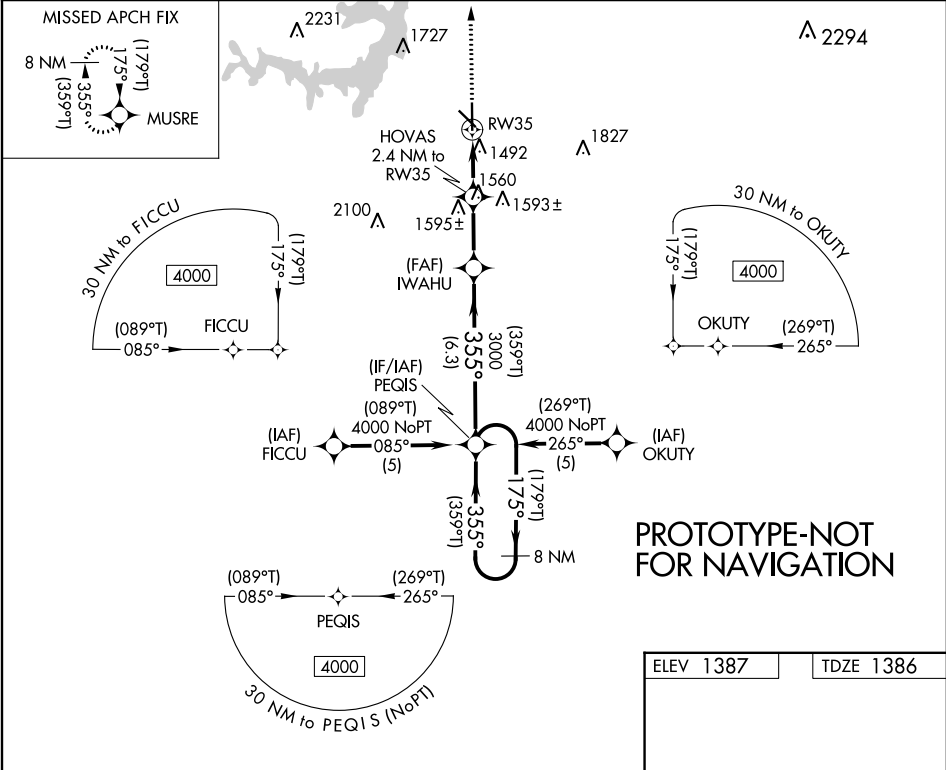
ARI SAVED
5/7/18

WAAS CH 77525 W35A	APP CRS 355°	Rwy Idg TDZE Apt Elev 5599 1386 1387
--	------------------------	--

RNAV (GPS) RWY 35
BROWNWOOD RGNL (BWD)

RNP APCH.	MISSED APPROACH: Climb to 4000 direct MUSRE and hold.
-----------	---

AWOS-3 118.325	FORT WORTH CENTER 127.45 290.3	UNICOM 122.8 (CTAF) 0
--------------------------	--	---------------------------------



CATEGORY	A	B	C	D
LPV DA		1636-1	250 (300-1)	
LNAV MDA	1780-1	394 (400-1)	1780-1½ 394 (400-1½)	1780-1¼ 394 (400-1¼)
CIRCLING	1840-1	453 (500-1)	1840-1½ 453 (500-1½)	1940-2 553 (600-2)

ELEV 1387	TDZE 1386
MRL Rwy 13-31 0 and 17-35 0	

AL-705 (FAA)

BROWNWOOD, TEXAS

17341

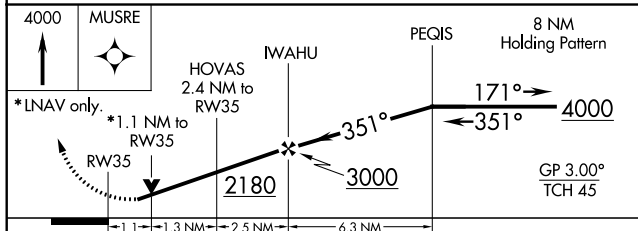
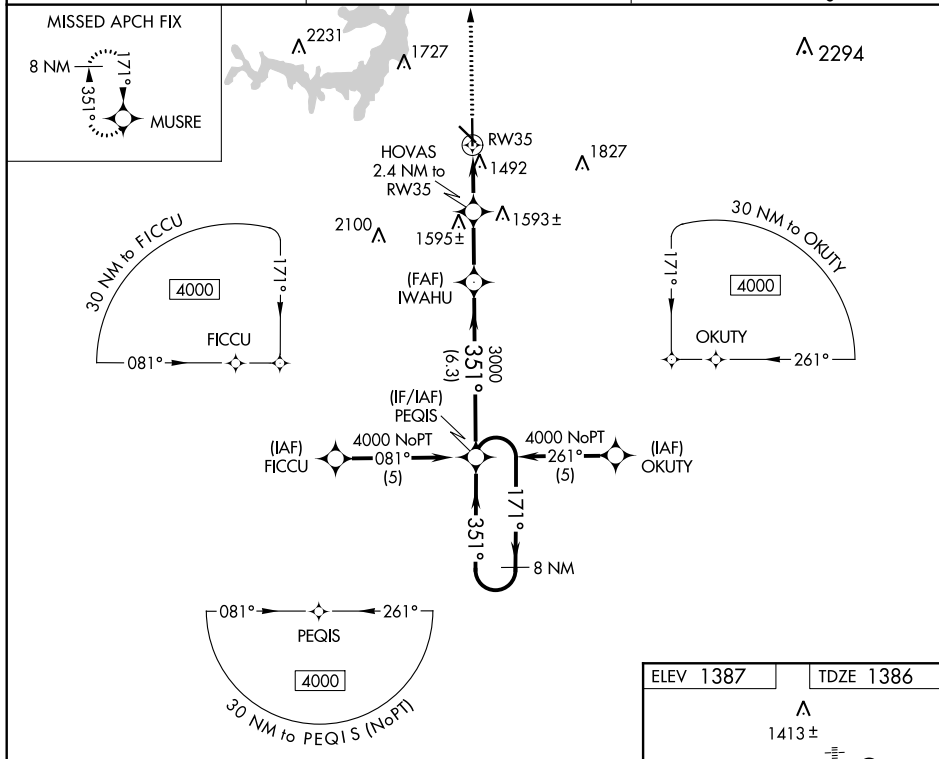
WAAS CH 77525 W35A	APP CRS 351°	Rwy Idg 5599 TDZE 1386 Apt Elev 1387
--	------------------------	---

RNAV (GPS) RWY 35
BROWNWOOD RGNL (BWD)

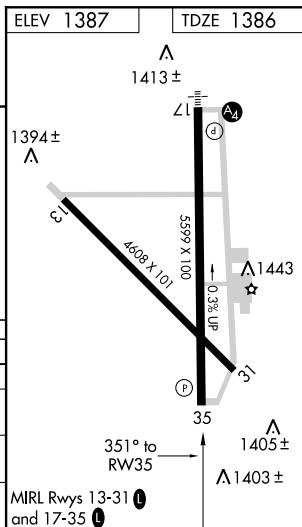
T If local altimeter setting not received, use Comanche County-City altimeter setting and increase all DAs/MDAs 60 feet. VDP NA with Comanche County-City altimeter setting. DME/DME RNP-0.3 NA.

MISSED APPROACH: Climb to 4000 direct MUSRE and hold.

AWOS-3 118.325	FORT WORTH CENTER 127.45 290.3	UNICOM 122.8 (CTAF) L
--------------------------	--	---------------------------------



CATEGORY	A	B	C	D
LPV DA	1636-1 250 (300-1)			
LNAV/ VNAV DA	NA			
LNAV MDA	1780-1 394 (400-1)			1780-1¼ 394 (400-1¼)
CIRCLING	1840-1 453 (500-1)	1840-1½ 453 (500-1½)	1940-2 553 (600-2)	



BROWNWOOD, TEXAS

Amdt 1 04AUG05

31°48'N-98°57'W

BROWNWOOD RGNL (BWD)
RNAV (GPS) RWY 35

SC-3, 04 JAN 2018 to 01 FEB 2018

SC-3, 04 JAN 2018 to 01 FEB 2018

