

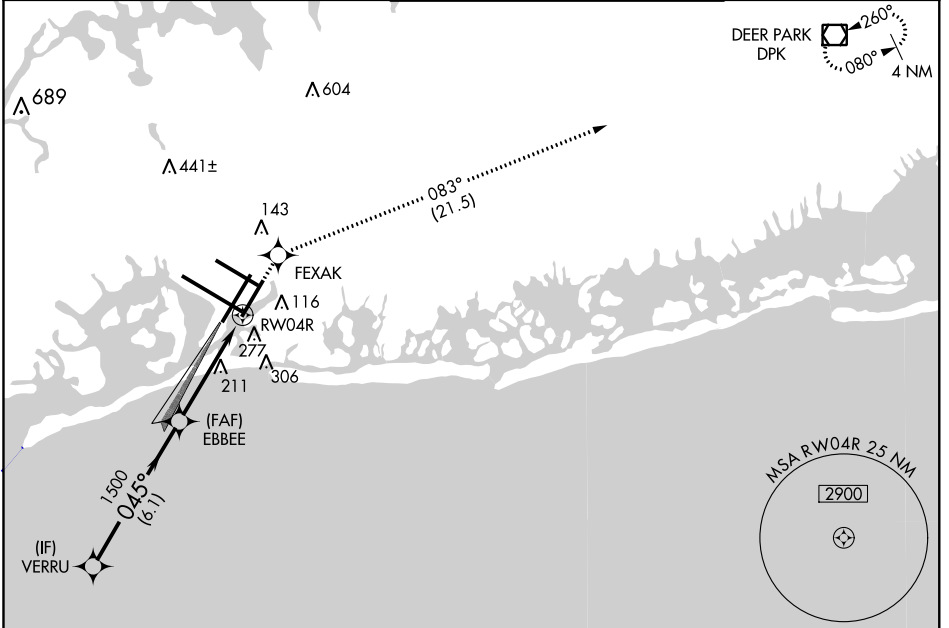
Flight Procedure Tracking Form		Action: FLIGHT CHECK	Task Type: IAP	Date Open: 01/04/2017	Task #: 2015080732420001020	Request #: 20150807324200
Procedure: RNAV (GPS) Y RWY 4R AMDT 2			Airport ID: KJFK	Airport: JOHN F KENNEDY INTL		Reimbursable #: NO
City: NEW YORK	ST: NY	GPS #:	Estimated Chart Date: 08/17/2017		FICO #:	
Fac ID: N/A		Fac. Type:			Specialist: JIMMY HUGHES	
Procedure Review						
	Rec'd	Rel'd	Full Name	Comments		
Lead:	08/07/2015	02/05/2016	MARCELLO SADORRA			
QA:	02/05/2016			CWS 5/31/17		
Liaison:						
Procedure Comments:			Remark Type: INFORMATION			
CONTACT: ROBERT HAMILTON, IFP TEAM 2 LEAD, 405-954-8568						

WAAS CH 81819 W04B	APP CRS 045°	Rwy Idg 8400 TDZE 13 Apt Elev 14
--	------------------------	---

RNAV (GPS) Y RWY 4R
JOHN F KENNEDY INTL (JFK)

<p>▼ For uncompensated Baro-VNAV systems, LNAV/VNAV NA below -15°C (5°F) or above 48°C (118°F). DME/DME RNP-0.3 NA. Simultaneous approach authorized with Rwy 4L. RNAV procedure NA during simultaneous operations. Use of FD or AP providing RNAV track guidance required during simultaneous operations.</p>	<p>ALSIF-2</p>	<p>MISSED APPROACH: Climb to 4000 direct FEXAK and right turn on track 083° to DPK VOR/DME and hold.</p>
--	----------------	--

D-ATIS (ARR/DEP) (ARR-NE) (ARR-SW) 128.725 117.7 115.4	NEW YORK APP CON 128.12 269.0	KENNEDY TOWER Rwys 4R/22L and 13L/31R 119.1 281.55 Rwys 4L/22R and 13R/31L 123.9 281.55	GND CON 121.9 348.6	CLNC DEL 135.05 348.6	CPDLC
---	---	---	-------------------------------	---------------------------------	-------



RADAR REQUIRED

VERRU

2000

GP 3.00°
TCH 53

045°

1500

6.1 NM

2.7 NM

1.7 NM

EBBEE

1500

*1.7 NM to RW04R

RW04R

*LNAV only

4000

FEXAK

tr 083°

DPK


CATEGORY	A	B	C	D
LPV DA	270/24		257 (300-½)	
LNAV/ VNAV DA	520/60		507 (600-1¼)	
LNAV MDA	600/24 587 (600-½)		600/50 587 (600-1)	600/60 587 (600-1¼)
CIRCLING	640-1 626 (700-1)		640-1¾ 626 (700-1¾)	640-2 626 (700-2)

ELEV 14

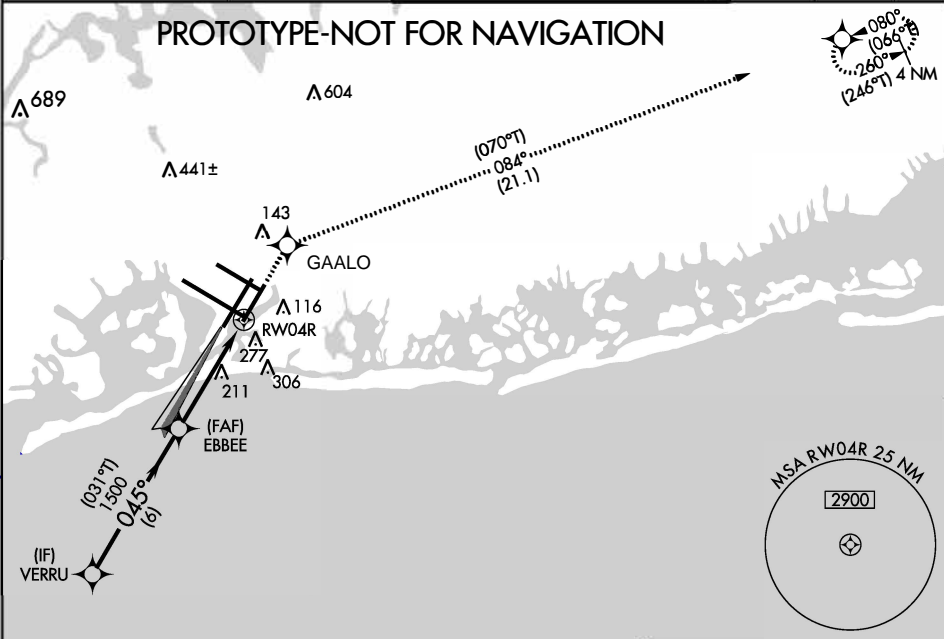
D

TDZE 13

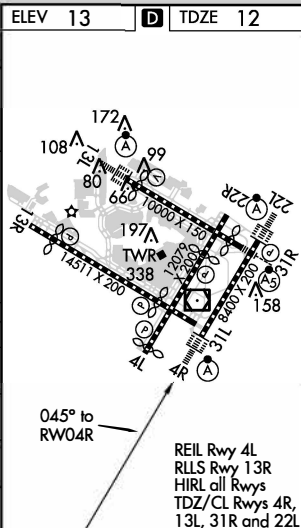
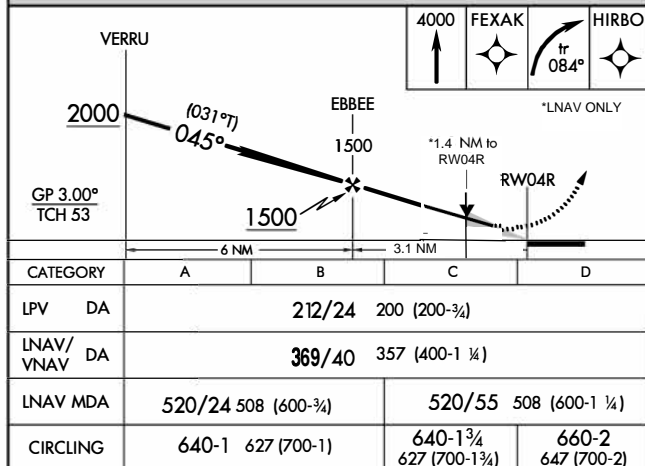
JOHN F KENNEDY INTL (JFK)

ALSF-2 	MISSED APPROACH: (DO NOT EXCEED 210 KIAS UNTIL GAALO) CLIMB TO 4000 DIRECT GAALO AND ON TRACK 083.67 TO HIRBO AND HOLD.
--	--

PROTOTYPE-NOT FOR NAVIGATION



RADAR REQUIRED



**JOHN F. KENNEDY INTL
NEW YORK, NY
RNAV (GPS) Y RWY 4R
AMDT 2
1:500,000**

MISSED HOLDING, AAO 584

HIRBO

7. MISSED LVL SFC, TWR 561

1. INTERMEDIATE, SHIP 200

1. INTERMEDIATE, SHIP 200

SPECIAL FLIGHT RULES AREA

©.F.R. PART 93

New York TAC and/or New York Helicopter Route Chart in the

with the information contained therein to operate in this area.



30 NM
25 C

MODE 3

0000 1001

2000 MSL

AND

E (JB-MDL)₁(WRI)

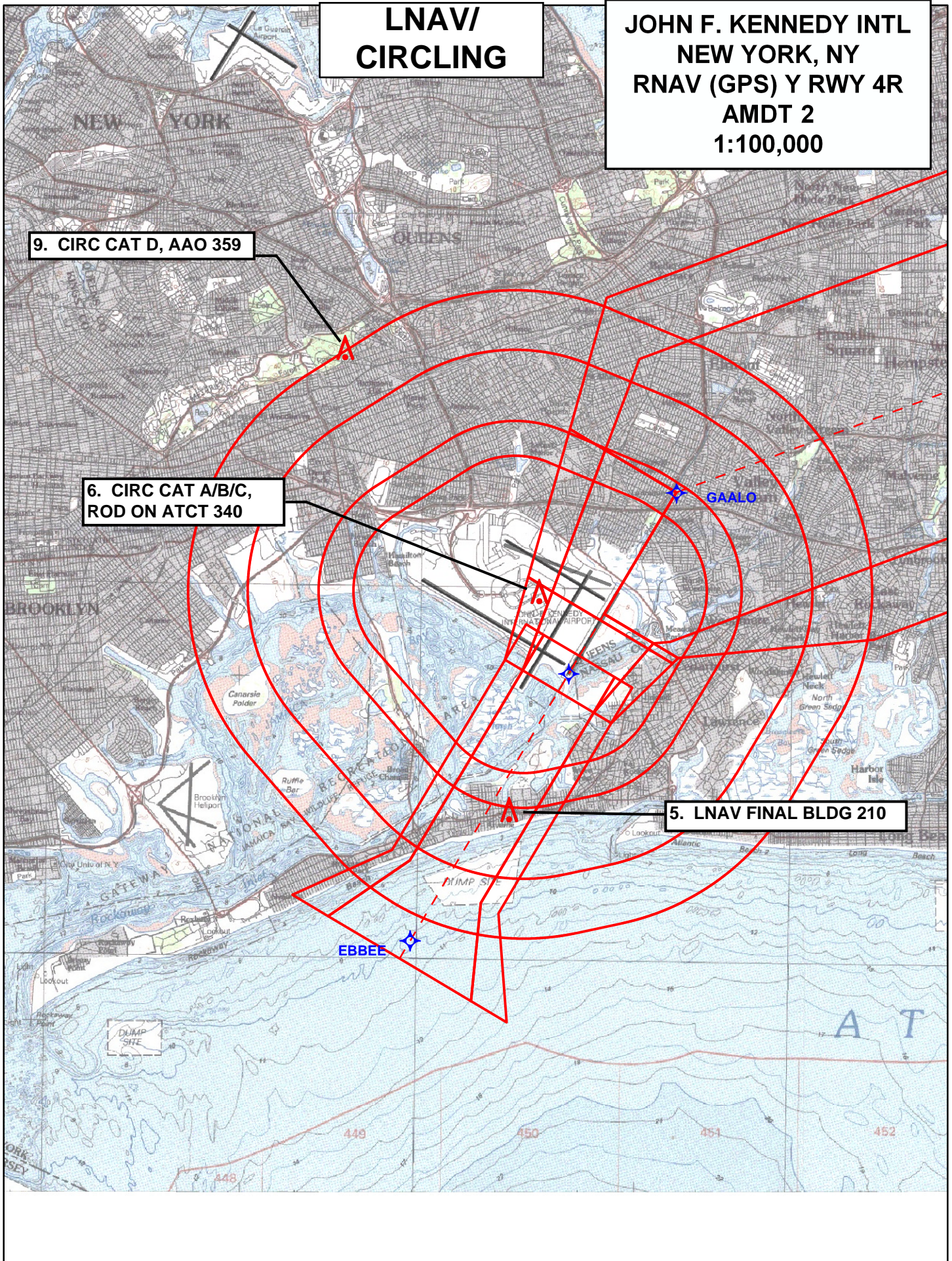
LNAV/ CIRCLING

JOHN F. KENNEDY INTL
NEW YORK, NY
RNAV (GPS) Y RWY 4R
AMDT 2
1:100,000

9. CIRC CAT D, AAO 359

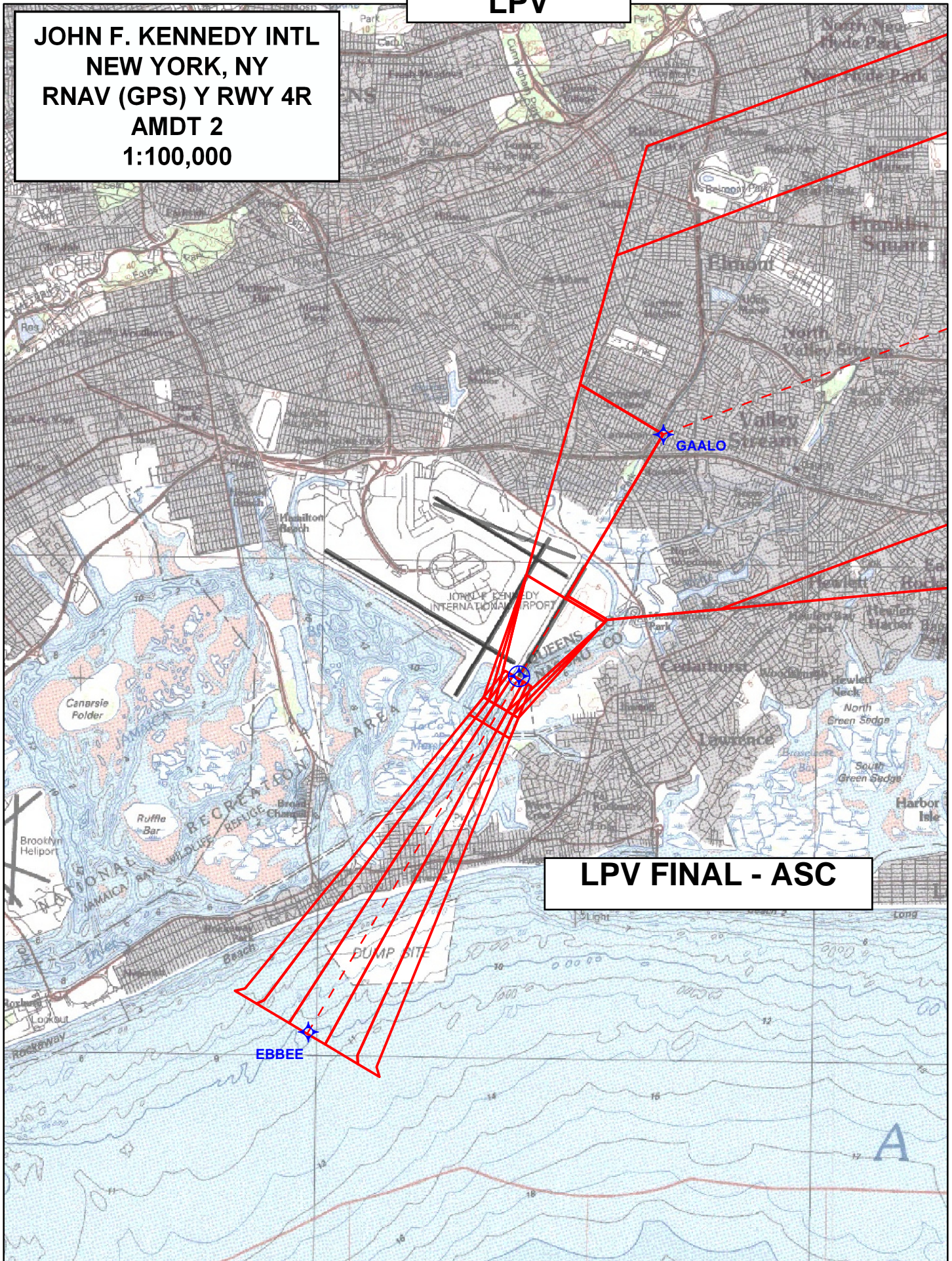
6. CIRC CAT A/B/C,
ROD ON ATCT 340

5. LNAV FINAL BLDG 210



LPV

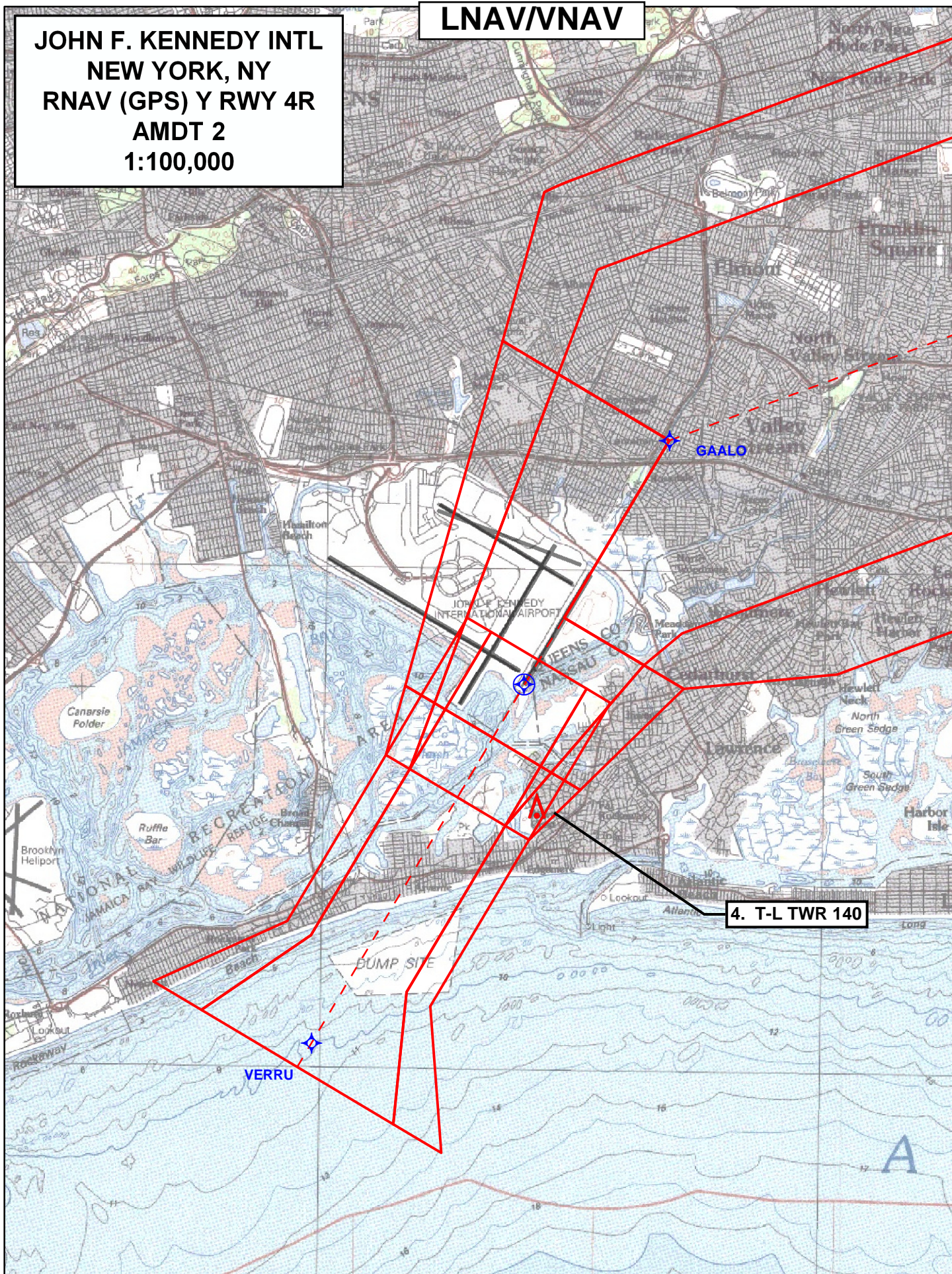
**JOHN F. KENNEDY INTL
NEW YORK, NY
RNAV (GPS) Y RWY 4R
AMDT 2
1:100,000**



LPV FINAL - ASC

**JOHN F. KENNEDY INTL
NEW YORK, NY
RNAV (GPS) Y RWY 4R
AMDT 2
1:100,000**

LNAV/VNAV



TERMINAL AIRSPACE DATA REQUIREMENTS

CITY: **NEW YORK**

INFO ONLY

STATE: **NY**

AIRPORT NAME: **JOHN F. KENNEDY INTL**

ID: **KJFK**

PROCEDURE: **RNAV (GPS) RWY 4R**

AMDT: **ORIG**

DOCKET # :

(96-AXX-X/Required/Not Required)

ALL DIST TO 1/100 NM; ELEV TO NEAREST FT; COORD TO 1/100 SEC; DEG TO 1/100 DG.

1. Distance from THLD to 1000' point 2.77 NM
(Enter THLD, FAF, ARP, FACILITY, as appropriate)

2. Width of FINAL segment at 1000' point 1.69 NM
(Enter appropriate segment , final, intermediate, etc.)

3. True Course of FINAL segment containing 1000' point 030.73

4. High terrain in FINAL segment containing 1000' point 43 FT

5. Distance from THLD to 1500' point 4.44 NM
(If 1500' point in PT maneuvering area or holding pattern note in remarks)

6. Width of FINAL segment at 1500' point 2.00 NM

7. True Course of FINAL segment containing 1500' point SEE #3

8. High terrain in FINAL segment containing 1500' point SEE #4

9. Threshold Coordinates (if straight-in) ... 403731.53N / 0734613.25W

10. ARP coordinates 403823.10N / 0734644.13W

11. Runway appro end and distance furthest from ARP.....RWY 13R
(Click to Select)

Distance 1.80 NM

12. FAF Coordinates 403342.18N / 0734912.20W
(Click to Select)

REMARKS: Approach/Drawing attached.