

Flight Procedure Tracking Form		Action: FLIGHT CHECK	Task Type: IAP	Date Open: 08/06/2015	Task #: 2015080625254801001	Request #: 20150806252548
Procedure: RNAV (GPS) RWY 10 AMDT 2			Airport ID: KHZL	Airport: HAZLETON RGNL		Reimbursable #: NO
City: HAZLETON	ST: PA	GPS #:	Estimated Chart Date: 05/26/2016		FICO #:	
Fac ID: N/A		Fac. Type:		Specialist: LIAM DONAHUE		
Procedure Review						
	Rec'd	Rel'd	Full Name		Comments	
Lead:	10/08/2015					
QA:			J ZEDER 02/25/2016 16			
Liaison:						
Procedure Comments:			ENROUTE-NON			
			Remark Type:		INFORMATION	
CONTACT: JULIE MORGAN/ ADOLFO URRUTIA, AJV-5410 LEADS, 405.954-8568/405.954-2079						

QUALITY
15
CHECKED

WAAS CH 86240 W10A	APP CRS 104°	Rwy Idg TDZE Apt Elev	4898 1603 1603
--	------------------------	-----------------------------	---

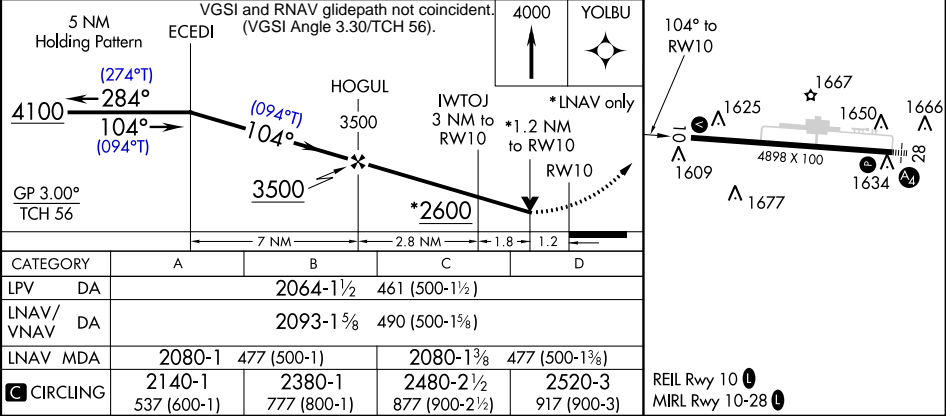
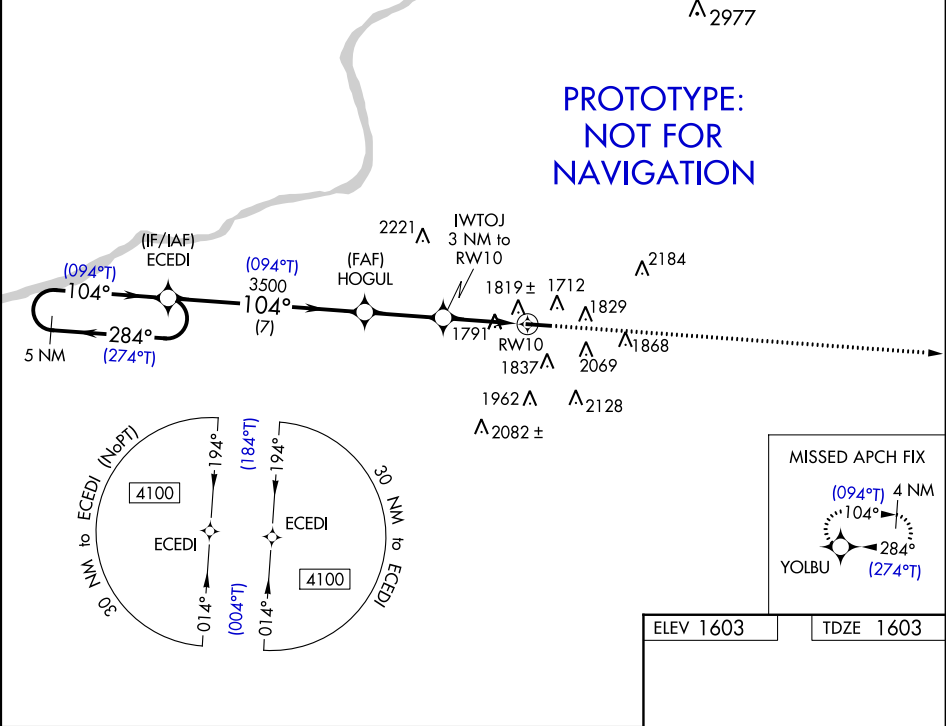
RNAV (GPS) RWY 10

HAZLETON RGNL (HZZL)

⚠ DME/DME RNP-0.3 NA. When local altimeter setting not received: use Wilkes-Barre/Scranton Intl altimeter setting and increase all DA 146 feet and all MDA 160 feet; increase LPV all Cats visibility 1 mile, increase LNAV/VNAV all Cats visibility ¾ mile, increase LNAV Cats C/D visibility ¾ mile, and increase Circling Cat B visibility ¼ mile and Cat C visibility ½ mile. Helicopter visibility reduction below ¾ SM NA. For uncompensated Baro-VNAV systems, LNAV/VNAV NA below -18 °C (0°F) or above 54°C (130°F). Baro-VNAV and VDP NA when using Wilkes-Barre/Scranton Intl altimeter setting.

MISSED APPROACH:
Climb to 4000 direct YOLBU and hold.

AWOS-3 119.975	WILKES-BARRE APP CON 126.3 256.7	CLNC DEL 121.7	UNICOM 123.0 (CTAF) 0
--------------------------	--	--------------------------	---------------------------------



1. TAA S/I
TOWER
2856 MSL

WILKES-BARRE T3A
SEE TWR FREQ TAB

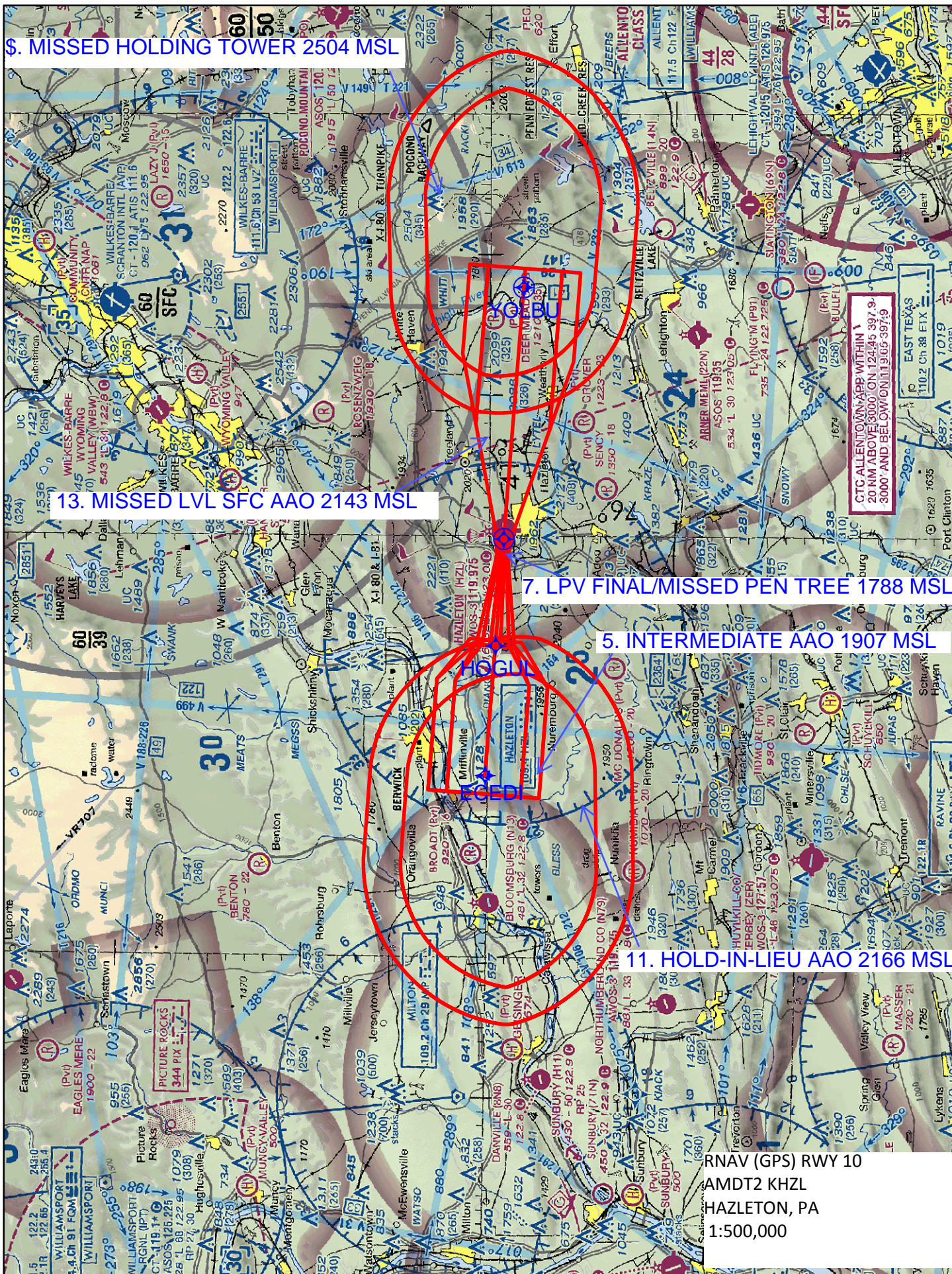
RNAV (GPS) RWY 10
AMDT2 KHZL
HAZLETON, PA
TAA
1:500,000

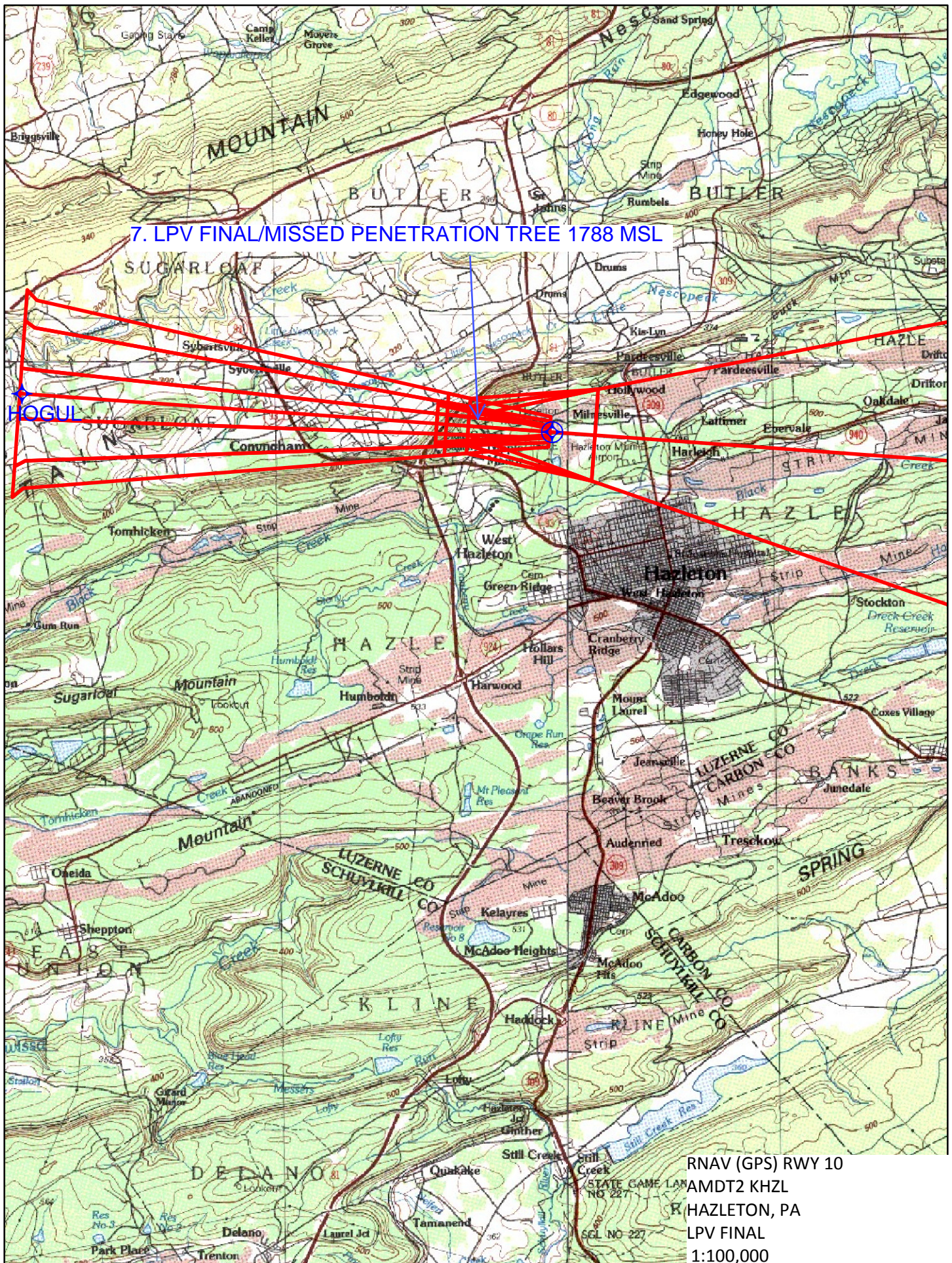


RNAV (GPS) RWY 10
AMDT2 KHZL
HAZLETON, PA
TAA
1:500,000

3. TAA S/I
TOWER
2965 MSL



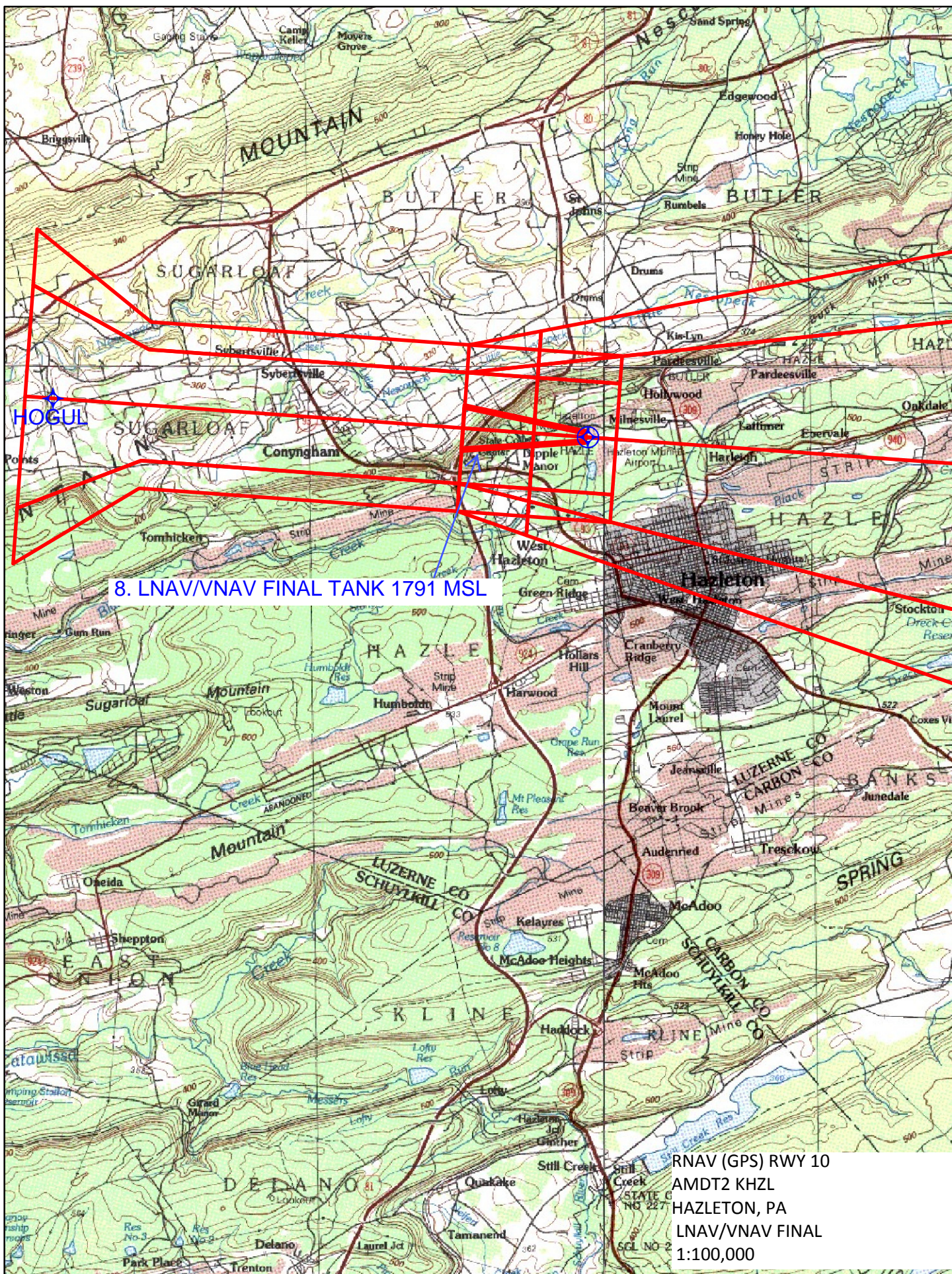




7. LPV FINAL/MISSED PENETRATION TREE 1788 MSL

HOGUL

RNAV (GPS) RWY 10
AMDT2 KHZL
R HAZLETON, PA
LPV FINAL
1:100,000



8. LNAV/VNAV FINAL TANK 1791 MSL

RNAV (GPS) RWY 10
AMDT2 KHZL
HAZLETON, PA
LNAV/VNAV FINAL
1:100,000

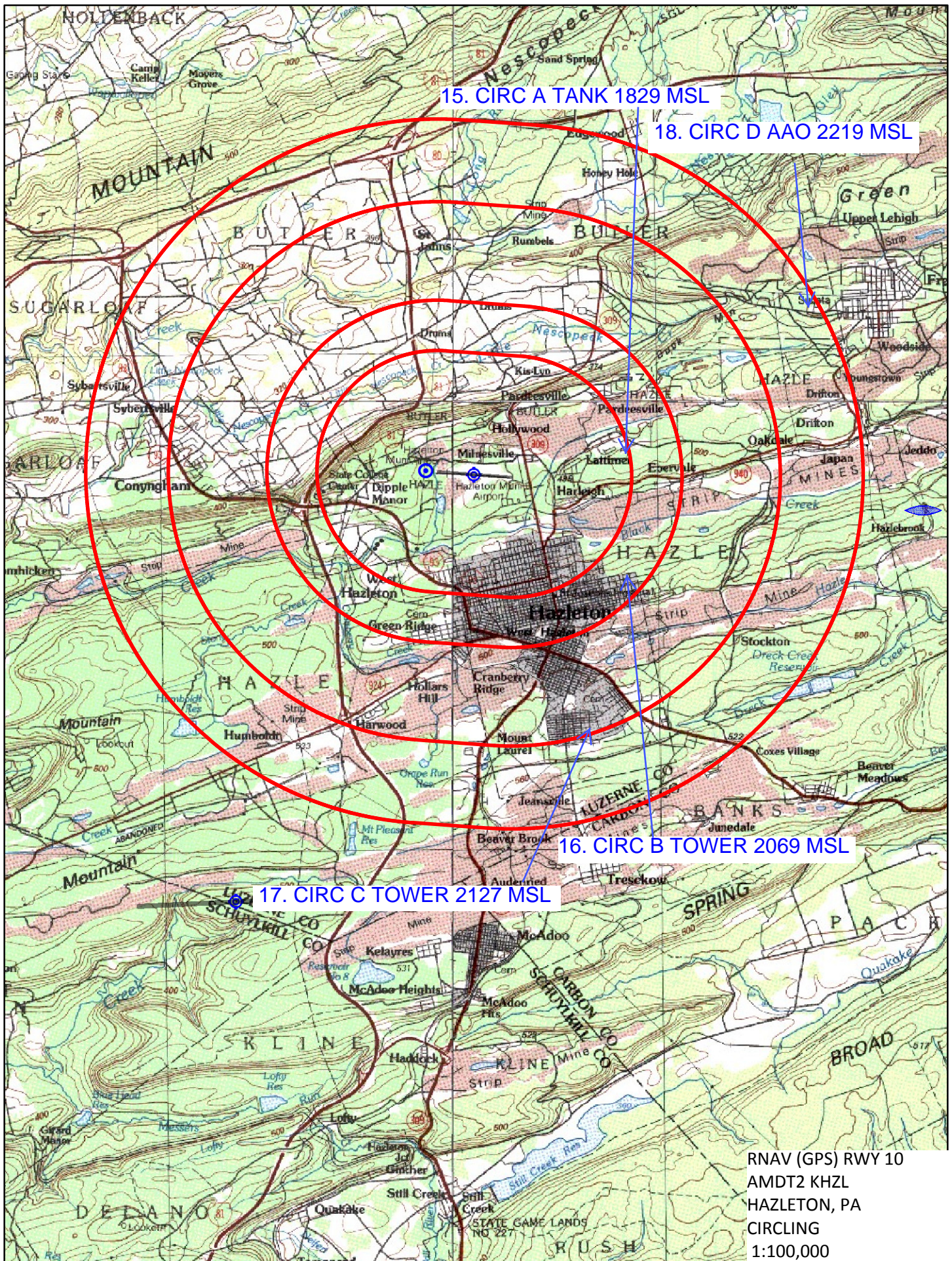
9. LNAV FINAL AAO 1886 MSL

HOGUL

WFOU

10. LNAV STEP DOWN TREE 1819 MSL

RNAV (GPS) RWY 10
AMDT2 KHZL
HAZLETON, PA
LNAV FINAL
1:100,000



RNAV (GPS) RWY 10
AMDT2 KHZL
HAZLETON, PA
CIRCLING
1:100,000

TERMINAL AIRSPACE DATA REQUIREMENTS

CITY: **HAZLETON**

STATE: **PA**

AIRPORT NAME: **HAZLETON RGNL**

ID: **KHZL**

PROCEDURE: **RNAV (GPS) RWY 10**

AMDT: **2**

DOCKET#: **NOT REQUIRED**

(96-AXX-X/Required/Not Required)

ALL DIST TO 1/100 NM; ELEV TO NEAREST FT; COORD TO 1/100 SEC; DEG TO 1/100 DG.

- | | | | |
|--|---------------------------------|--------------------------------|---------------|
| 1. Distance from | <u>THLD</u> | to 1000' point | <u>3.29</u> |
| (Enter THLD, FAF, ARP, FACILITY, as appropriate) | | | |
| 2. Width of | <u>FINAL</u> | segment at 1000' point | <u>1.20</u> |
| (Enter appropriate segment, final, intermediate, etc.) | | | |
| 3. True Course of | <u>FINAL</u> | segment containing 1000' point | <u>094.04</u> |
| 4. High Terrain in | <u>FINAL</u> | segment containing 1000' point | <u>1749</u> |
| 5. Distance from | <u>THLD</u> | to 1500' point | <u>5.20</u> |
| (If 1500' point in PT maneuvering area or holding pattern note in remarks) | | | |
| 6. Width of | <u>FINAL</u> | segment at 1500' point | <u>1.57</u> |
| 7. True Course of | <u>FINAL</u> | segment containing 1500' point | <u>094.04</u> |
| 8. High Terrain in | <u>FINAL</u> | segment containing 1500' point | <u>1749</u> |
| 9. Threshold Coordinates (if straight-in) ... | <u>405914.16N / 0760013.45W</u> | | |
| 10. ARP Coordinates | <u>405912.40N / 0755941.60W</u> | | |
| 11. Runway Approach End and distance furthest from ARP | RWY | <u>10</u> | |
| | Distance | <u>0.40</u> | NM |
| 12. FAF Coordinates | <u>405938.94N / 0760752.17W</u> | | |

REMARKS: Approach/Drawing attached.
TAA : ECEDI (IF/IAF) 410008.18N/0761705.52W 30 NM