

Flight Procedure Tracking Form		Action: FLIGHT CHECK	Task Type: TEXTUAL DP	Date Open: 07/16/2015	Task #: 2015071627864102001	Request #: 20150716278641
Procedure: TOGIAK AK PATG AMDT 2			Airport ID: PATG	Airport: TOGIAK		Reimbursable #: NO
City: TOGIAK VILLAGE	ST: AK	GPS #:	Estimated Chart Date: 03/29/2018		FICO #:	
Fac ID: N/A		Fac. Type:			Specialist: SEAN BARBEE	
Procedure Review						
	Rec'd	Rel'd	Full Name	Comments		
Lead:	07/05/2017			QUALITY Digitally signed by		
QA:				24 DAVID W SAUER		
Liaison:				CHECKED Dec 12, 2017		
Procedure Comments:			ENROUTE-NON			
			Remark Type: INFORMATION			
ASSIGNED MAGVAR: PATG OLD 15E - NEW 11E PENDING DATA USED FOR PATG AIRPORT AND RUNWAYS CONTACT: PATRICK MULQUEEN, (405) 954-4073 OR JACOB POWERS, (405) 954-8702						



17285

TAKEOFF MINIMUMS, (OBSTACLE) DEPARTURE PROCEDURES, AND DIVERSE VECTOR AREA (RADAR VECTORS)



TATALINA LRRS (PATL)

TAKOTNA, AK

TAKEOFF MINIMUMS AND (OBSTACLE)
DEPARTURE PROCEDURES
ORIG, 14149

Diverse departures not authorized.

CAUTION: Uncontrolled Airspace below 1200' AGL within 4 NM of Tatalina airport.

DEPARTURE PROCEDURE: **Rwy 17**, use TATALINA DEPARTURE (RNAV1). **Rwy 35**, NA.

TATITLEK, AK

TATITLEK (7KA) (PAKA)

TAKEOFF MINIMUMS AND (OBSTACLE)
DEPARTURE PROCEDURES

ORIG-A 13010 (FAA)

TAKEOFF MINIMUMS: **Rwy 13**, std. w/min. climb of 358' per NM to 2500 or 3400-2 for climb in visual conditions.

Rwy 31, std. w/min. climb of 370' per NM to 900 or 3400-2 for climb in visual conditions.

DEPARTURE PROCEDURE: **Rwy 13**, climbing right turn heading 146° and JOH R-338 to JOH VOR/DME before proceeding on course or. ...

Rwy 31, climbing left turn heading 252° to intercept JOH R-316 to JOH VOR/DME before proceeding on course. Do not exceed 180 KIAS until established on JOH R-316 or. ...

Rwys 13, 31, ... for climb in visual conditions: cross Tatitlek airport at or above 3300 then via JOH R-336 to JOH VOR/DME before proceeding on course. Do not exceed 180 KIAS until established on JOH R-336 to JOH VOR/DME.

Note: rapidly rising terrain northwest of procedure.

TAKEOFF OBSTACLE NOTES: **Rwy 13**, trees 335' from DER, 411' right of centerline, 39' AGL/79' MSL. Trees 11' from DER, 467' left of centerline, 34' AGL/74' MSL. Bush 429' from DER, 48' right of centerline, 12' AGL/52' MSL. Vent on building 1172' from DER, 767' left of centerline, 58' AGL/98' MSL. Pole 3072' from DER, 194' left of centerline, 99' AGL/139' MSL. **Rwy 31**, trees beginning 23' from DER, 339' right of centerline, up to 100' AGL/703' MSL.

TELLER, AK

TELLER (TER) (PATE)

TAKEOFF MINIMUMS AND (OBSTACLE)
DEPARTURE PROCEDURES

ORIG 09239 (FAA)

TAKEOFF MINIMUMS: **Rwy 7**, 500-2 w/ min. climb of 201' per NM to 1100 or std. w/ min. climb of 310' to 1100 or 1500-3 for climb in visual conditions. **Rwy 25**, 300-2 or std. w/ min. climb of 220' per NM to 700.

DEPARTURE PROCEDURE: **Rwy 7**, climb heading 075° to 1400 before turning right. For climb in visual conditions cross Teller Airport at or above 1600 before proceeding on course. **Rwy 25**, climb heading 255° to 1200 before turning left.

TAKEOFF OBSTACLE NOTES: **Rwy 7**, vehicles and vegetation beginning 57' from DER, 500' left of centerline, up to 15' AGL/314' MSL. **Rwy 25**, vegetation and terrain beginning 1052' from DER, 276' right of centerline, up to 10' AGL/359' MSL.

TIN CITY LRRS (PATC)

TIN CITY, AK

TAKEOFF MINIMUMS AND (OBSTACLE)
DEPARTURE PROCEDURES
ORIG, 15008

Diverse Departures not authorized.

TAKE-OFF MINIMUMS: **Rwy 34**, 2500-3 for climb in visual conditions.

DEPARTURE PROCEDURE: **Rwy 16**, use HONPO DEPARTURE. **Rwy 34**, use JEKLI DEPARTURE.

VCOA: **Rwy 34**, Obtain ATC approval for VCOA when requesting IFR clearance. Climb in visual conditions to cross Tin City airport at or above 2600 before proceeding on course. Remain within 3.0 NM of Tin City airport during climb in visual conditions.

TAKEOFF OBSTACLE NOTES: **Rwy 34**, terrain at the DER, 353' right of centerline, 260' MSL. Terrain 4228' from DER, 1027' left of centerline, 407' MSL. Terrain 4835' from DER, 970' left of centerline, 407' MSL. **Rwy 16**, NA - Terrain.

TOGIAK VILLAGE, AK

TOGIAK (TOG) (PATG)

TAKEOFF MINIMUMS AND (OBSTACLE)
DEPARTURE PROCEDURES

AMDT 1 07018 (FAA)

TAKEOFF MINIMUMS: **Rwys10, 28**, NA-environmental DEPARTURE PROCEDURE: **Rwy 3**, climb heading 028° to 1000, then climbing right turn to 2800 direct TOG NDB/DME, continue climb in TOG NDB/DME holding pattern (hold southwest, right turn, 023° inbound) to cross TOG NDB/DME at or above 2800 before proceeding on course.

Rwy 21, climb heading 208° to 1000, then climbing left turn to 2800 direct TOG NDB/DME, continue climb in TOG NDB/DME holding pattern (hold southwest, right turn, 023° inbound) to cross TOG NDB/DME at or above 2800 before proceeding on course.

TAKEOFF OBSTACLE NOTES: **Rwy 21**, boats beginning 150' from DER, 500' left of centerline, up to 50' AGL/50' MSL.

TOK, AK

TOK JUNCTION (6K8) (PFTO)

TAKEOFF MINIMUMS AND (OBSTACLE)
DEPARTURE PROCEDURES

ORIG 06047 (FAA)

TAKEOFF MINIMUMS: **Rwy 7**, std. with a min. climb of 280' per NM to 2700, or 1200-3 for climb in visual conditions.

Rwy 25, 300-1½ or std. with a min. climb of 360' per NM to 2300 and 230' per NM to 3600, or 1200-3 for climb in visual conditions.

DEPARTURE PROCEDURE: **Rwy 7**, climb to 8000 via heading 070° and ORT VORTAC R-286 direct ORT VORTAC, or for climb in visual conditions: cross Tok Junction Airport at or above 2700, then continue climbing to 8000 via heading 070° and ORT VORTAC R-286 direct ORT VORTAC. **Rwy 25**, climb to 2300 via heading 251°, then climbing right turn to 8000 via heading 060° and ORT VORTAC R-286 direct ORT VORTAC, or for climb in visual conditions: cross Tok Junction Airport at or above 2700, then continue climbing to 8000 via heading 070° and ORT VORTAC R-286 direct ORT VORTAC.

TAKEOFF OBSTACLE NOTES: **Rwy 25**, tower 1 NM from DER, 2150' left of centerline, 228' AGL/1863' MSL.

12 OCT 2017 to 07 DEC 2017

12 OCT 2017 to 07 DEC 2017

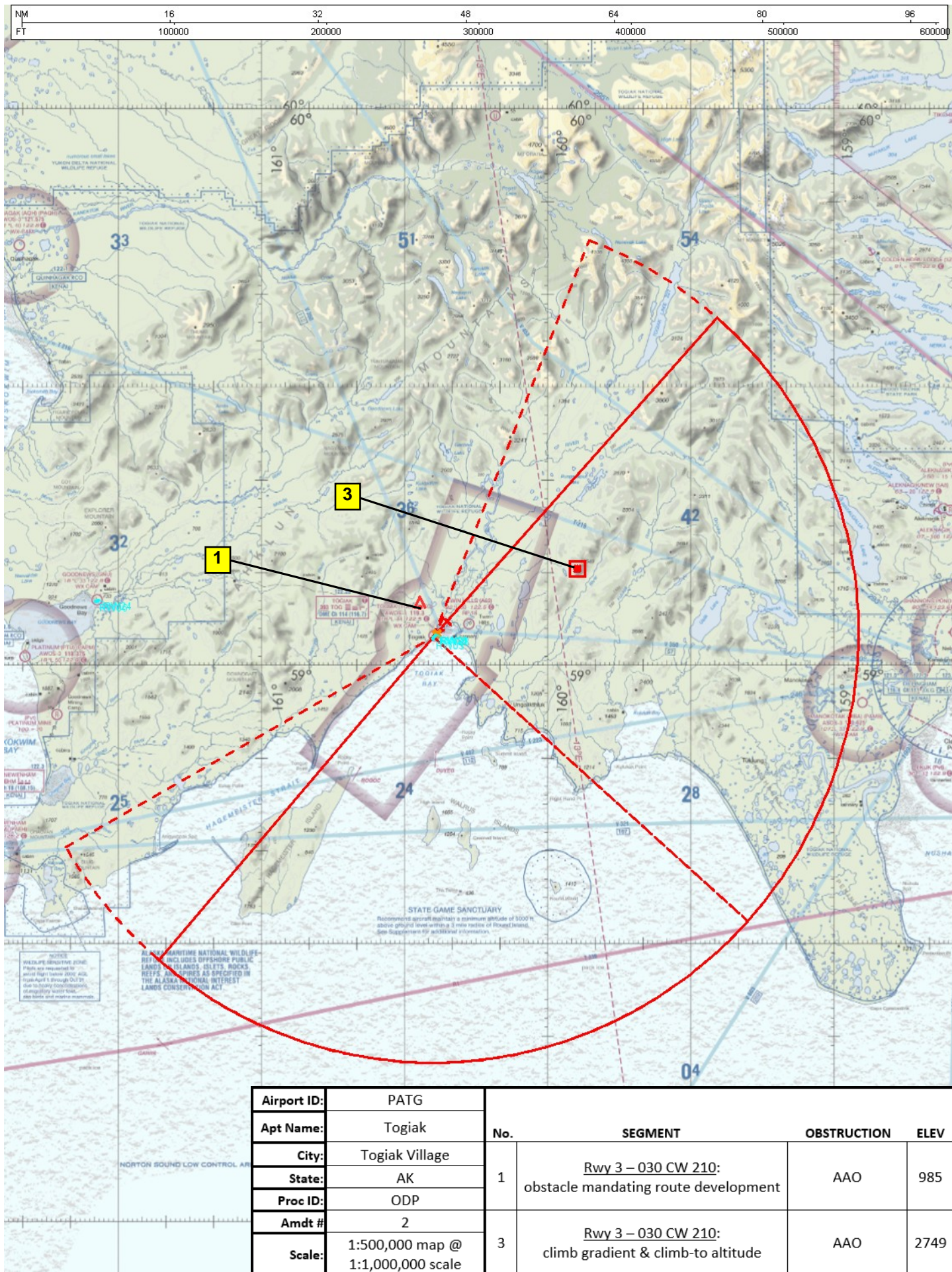


17285

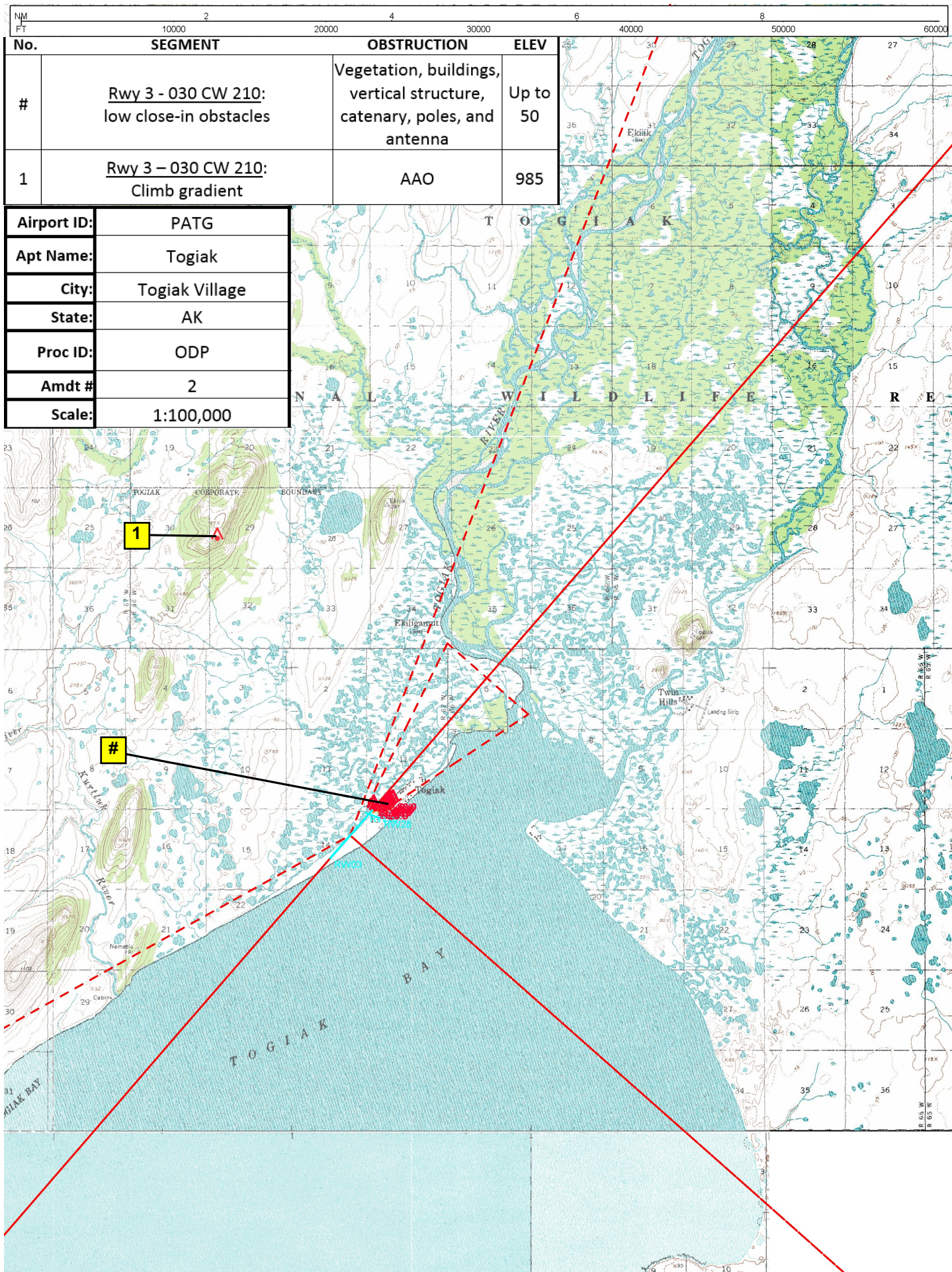
TAKEOFF MINIMUMS, (OBSTACLE) DEPARTURE PROCEDURES, AND DIVERSE VECTOR AREA (RADAR VECTORS)

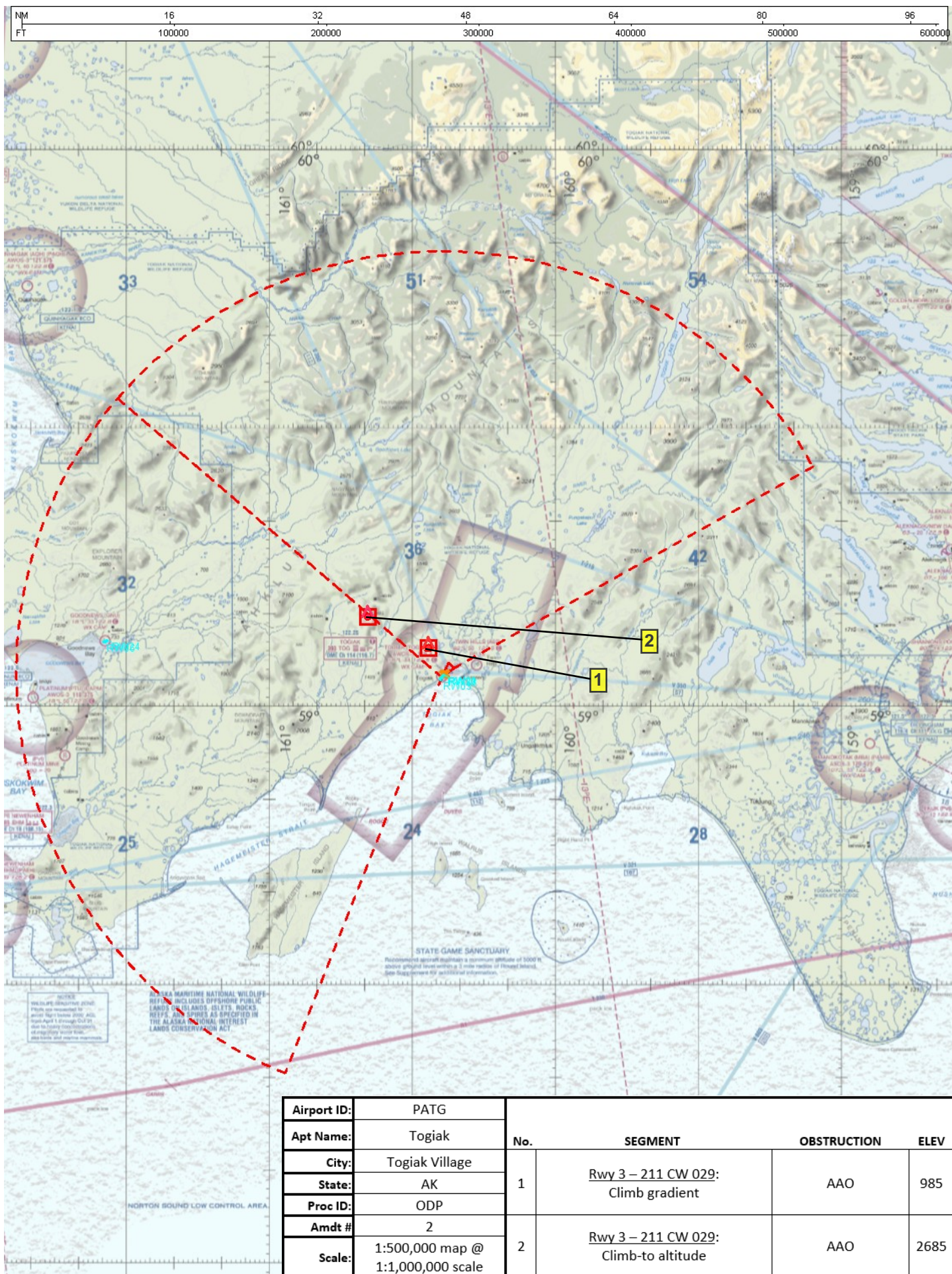


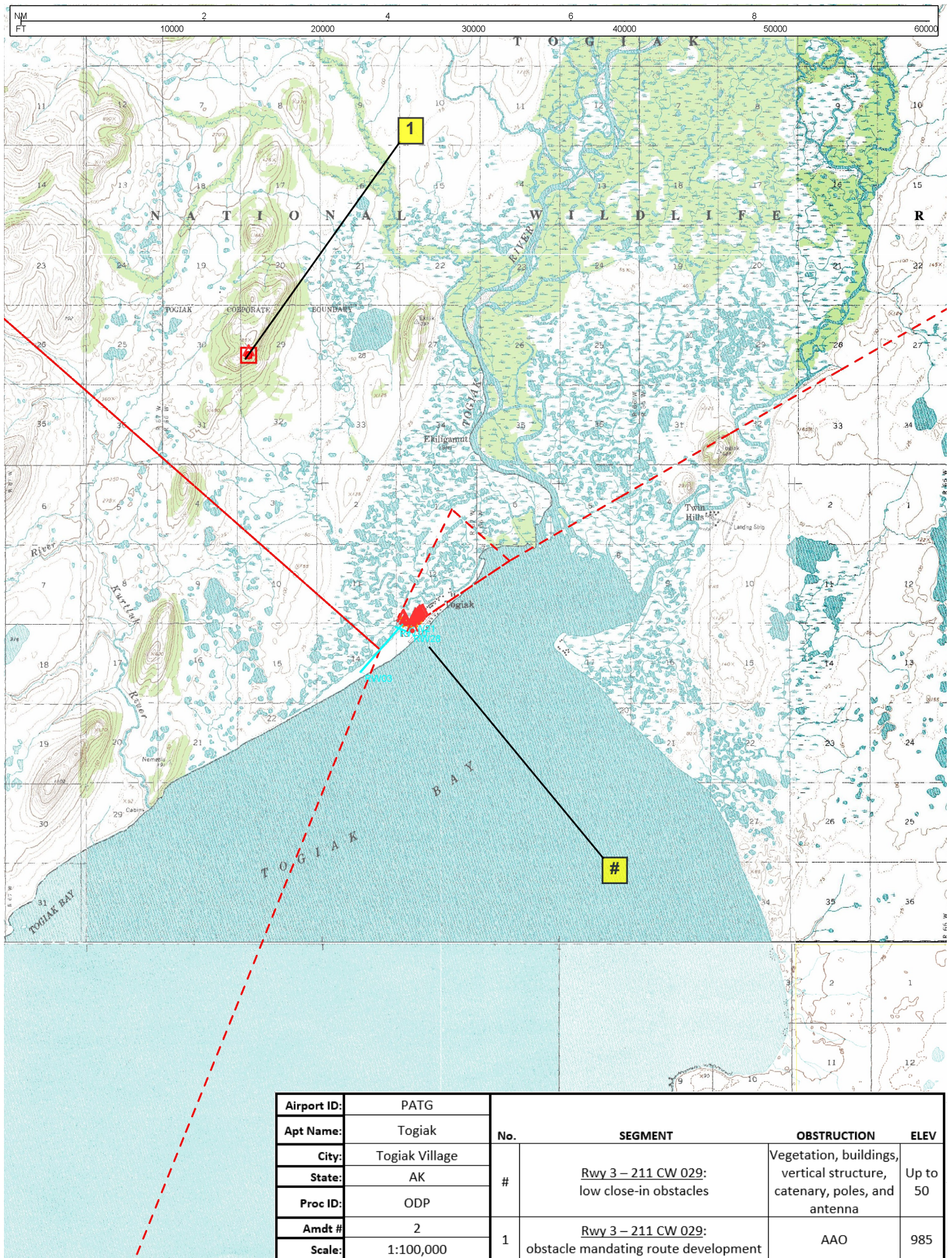
AK



Airport ID:	PATG	No.	SEGMENT	OBSTRUCTION	ELEV
Apt Name:	Togiak				
City:	Togiak Village				
State:	AK				
Proc ID:	ODP				
Amdt #	2				
Scale:	1:500,000 map @ 1:1,000,000 scale	1	<u>Rwy 3 – 030 CW 210:</u> obstacle mandating route development	AAO	985
		3	<u>Rwy 3 – 030 CW 210:</u> climb gradient & climb-to altitude	AAO	2749







Airport ID:	PATG			
Apt Name:	Togiak	No.	SEGMENT	OBSTRUCTION
City:	Togiak Village	#	Rwy 3 – 211 CW 029: low close-in obstacles	Vegetation, buildings, vertical structure, catenary, poles, and antenna
State:	AK			
Proc ID:	ODP		Rwy 3 – 211 CW 029: obstacle mandating route development	AAO
Amdt #	2			
Scale:	1:100,000			
		1		Up to 50
				985



Airport ID:	PATG				
Apt Name:	Togiak	No.	SEGMENT	OBSTRUCTION	ELEV
City:	Togiak Village	4	Rwy 21 obstacle mandating route development	AAO	1302
State:	AK				
Proc ID:	ODP				
Amdt #	2				
Scale:	1:500,000 map @ 1:1,000,000 scale				

